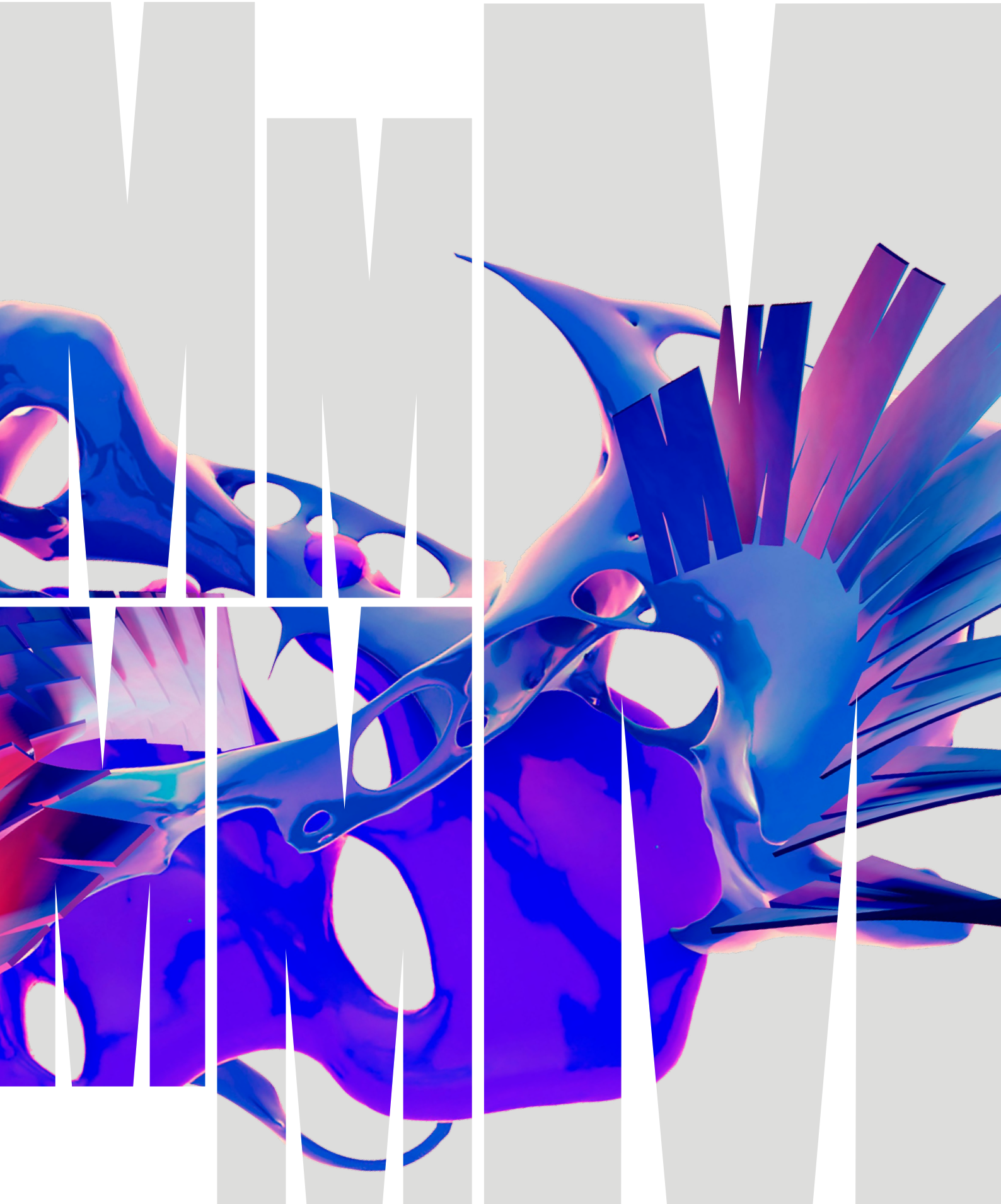


**ENTRY
SCHEMES**
2026



WE CAN CHANGE A NUMBER, SO YOU CAN CHANGE YOUR LIFE

Not everyone's story is the same. Life can get in the way of study. And we know your ATAR may not reflect your true academic ability.

No matter the circumstances, we recognise and support talent. That's why we offer entry schemes to help you enter your preferred course at Monash, by considering your life circumstances.

If you're inspired by big ideas and fired up with ambition, you'll fit right in at Monash.

Entry schemes

The Monash Guarantee promises entry at a lower ATAR, while equity schemes (formerly SEAS) adjusts your selection rank. Indigenous Australians, you'll also be eligible for entry through the Monash Indigenous Entry Scheme.

Having these schemes means that we can consider as many students as possible. In all cases, you must still meet prerequisites and any other requirements your preferred course might have. For example, you must pass the UCAT to enter medicine, and audition to enter music.

Depending on your situation and background, you could be eligible for the Monash Guarantee or equity schemes, or both. You don't have to choose between them. All you need to do is apply for equity schemes through VTAC, and leave the rest to VTAC and us. Most Victorian universities use equity schemes, while the Monash Guarantee is specific to Monash University.

THE MONASH GUARANTEE

You could be eligible for the Monash Guarantee if you:

- have experienced financial hardship
- are an Indigenous Australian
- are in Year 12 and attend a Monash-listed under-represented school
- live in a low socio-economic area
- live in or go to school in a regional or remote area.

How it works

Most Monash courses have a Monash Guarantee ATAR. You'll find them listed within the course pages on our website and in the table opposite. For most courses, if you meet the Monash Guarantee criteria, achieve or exceed the Monash Guarantee ATAR, and complete or meet all course prerequisites, you're guaranteed a place in that course. There are some exceptions, which are explained in the table.

Eligibility

To be eligible for the Monash Guarantee, you must:

- have completed an Australian Year 12 (or equivalent) within the previous five years (2020 onwards), and have not commenced tertiary studies
- meet or exceed the Monash Guarantee ATAR for your preferred course
- satisfy all course-specific prerequisites and requirements, such as the UCAT, a portfolio, interview or audition
- be an Australian or New Zealand citizen, or holder of an Australian permanent resident or permanent humanitarian visa
- demonstrate that you've met at least one of the following listed criteria:

Financial hardship

To demonstrate financial hardship, you must have documents that prove at least one of the following:

- You receive an income-tested Centrelink benefit (e.g. Youth allowance, Abstudy, Health Care Card)
- Your parents/guardians receive an income-tested Centrelink benefit (e.g. Family Tax Benefit A)
- You and/or your family are facing financial hardship or excessive financial obligations (e.g. living on a farm suffering from drought or floods).

Indigenous Australian

Monash is committed to encouraging more Indigenous students to access and succeed at university. If you're an Indigenous Australian and you meet the required ATAR, you'll be eligible for the Monash Guarantee.

Under-represented school

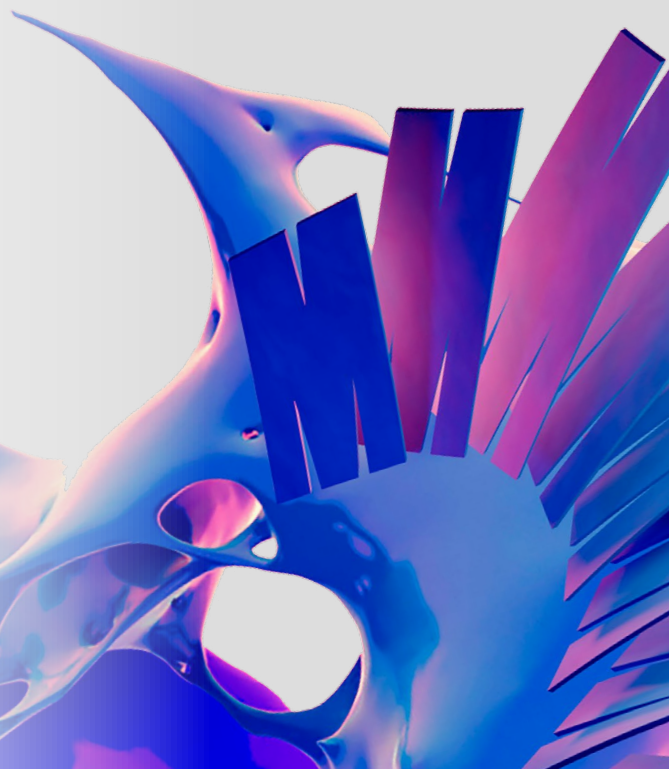
Monash has identified more than 1000 schools across Australia as being under-represented at university. If you attend one of these schools and meet the required ATAR, you'll be eligible for the Monash Guarantee. Find the list at monash.edu/guaranteedentry

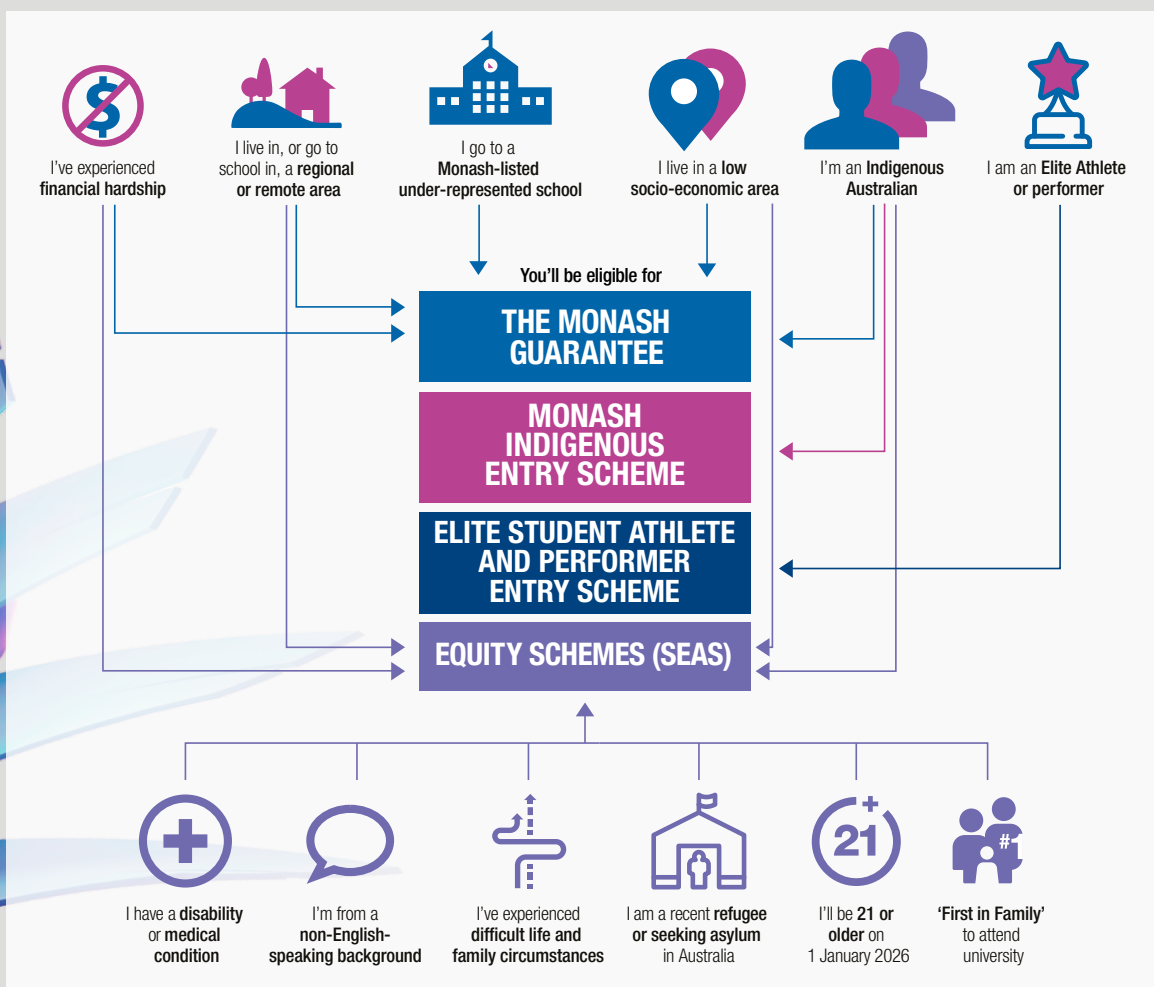
Low socio-economic area

If you live in a low socio-economic area according to census data, you'll be eligible for the Monash Guarantee. Find out if your address qualifies at monash.edu/seas

Regional or remote area

If you live or go to school in a regional or remote area, according to census data, you'll be eligible for the Monash Guarantee. Find out if your address qualifies at monash.edu/seas





MONASH INDIGENOUS ENTRY SCHEME

The Indigenous Entry Scheme offers Aboriginal and Torres Strait Islander applicants admission to a range of undergraduate courses with a significantly lower ATAR requirement (achieved ATAR of 50+, higher for some courses).

There are no special classes, extra requirements or time added to the course for students admitted under this entry scheme and students will graduate with the same Monash degree as any other student.

There are also opportunities to transfer into double degrees and into specialist degrees (eg. Bachelor of Law; Bachelor of Engineering).

To be eligible for an offer, you must:

- be of Aboriginal and/or Torres Strait Islander descent;
- achieve an ATAR of at least 50.
- meet the course prerequisites (this information can be found in the VTAC course entry guide);
- complete the VTAC supplementary information form which is available from: vtac-supp.adm.monash.edu/SupplementaryVTAC
- add your preferred Indigenous Entry course as a preference on your VTAC application.

Indigenous students are encouraged to contact the William Cooper Institute for information about studying with Monash University.

✉ wci-study@monash.edu

🌐 monash.edu/indigenous-australians/study

EQUITY SCHEMES (SEAS)

Equity schemes (SEAS) adjusts your Monash selection rank in recognition of circumstances that may have affected your education. This gives you a better chance of getting an offer for the course you want. You'll receive adjustments that reflect the severity of your circumstances. The adjustments are made to your achieved ATAR. We use this adjusted ATAR during the university selection process.

Eligibility

To be eligible for equity schemes (SEAS), you must:

- satisfy the criteria for one or more of the equity schemes categories:
 - financial hardship
 - Indigenous Australian
 - First in Family to attend university
 - live in a low socio-economic area
 - live in a regional or remote location
 - be a recent refugee or seeking asylum in Australia
 - born in a non-English-speaking country and moved to Australia after 1 January 2016
 - experienced difficult family or life circumstances
 - living with a disability or medical condition
 - aged 21 or older on 1 January 2026
- be an Australian or New Zealand citizen, an Australian permanent resident, or hold one of the following visas for Australia:
 - Permanent Humanitarian visa
 - Temporary Protection visa
 - Bridging visa A or E
 - Safe Haven Enterprise visa.

You can find more information about the equity schemes categories and criteria at monash.edu/entry-schemes

MONASH GUARANTEE (MG) AND INDIGENOUS ENTRY SCHEME (IES) ATARS

COURSE	MG	IES
ART, DESIGN AND ARCHITECTURE		
Architectural Design	70	65
Design	70	50
Fine Art (Art History and Curating)	70	65
DOUBLE DEGREES		
Architectural Design/Master of Architecture	70	
Architectural Design/Engineering	76	
Architectural Studies/Business	70	
Architectural Studies/Technology	76 RC	
Architectural Studies/Fine Art	70 RC	
Architectural Studies/Design	70	
Art History and Curating/Arts	70	
Art History and Curating/Business	70	
Art History and Curating/Media Communication	70	
Design/Arts	70	
Design/Business	70	
Design/Engineering	76	
Design/Fine Art	70 RC	
Design/Information Technology	76	
Design/Media Communication	70	
Fine Art/Arts	70 RC	
Fine Art/Business	72 RC	
Fine Art/Primary Education	70 RC	
Fine Art/Secondary Education	72 RC	
Fine Art/Information Technology	76 RC	
Fine Art/Media Communication	70 RC	
ARTS, HUMANITIES AND SOCIAL SCIENCES		
Arts	70	50
Criminology	70	
Criminology and Policing	70 RC	
Global Studies	70	
International Relations	70	
Media Communication	70	
Music	70 RC	
Politics, Philosophy and Economics	70 RC	
DOUBLE DEGREES		
Arts/Art History and Curating	70	
Arts/Business	70	
Arts/Commerce	78	
Arts/Criminology	70	
Arts/Design	70	
Arts/Education	70 RC	
Arts/Engineering	75	
Arts/Fine Art	70 RC	
Arts/Global Studies	70	
Arts/Health Sciences	70	
Arts/Information Technology	76	
Arts/Laws	85	
Arts/Marketing	70	
Arts/Media Communication	70	
Arts/Music	70 RC	
Arts/Psychology	75	
Arts/Science	72	
Criminology/Information Technology	76	
Global Studies/Commerce	78	
Global Studies/Information Technology	76	
Global Studies/Laws	85	
Global Studies/Science	72	

COURSE	MG	IES
Laws/International Relations	85	
Media Communication/Art History and Curating	70	
Media Communication/Business	70	
Media Communication/Design	70	
Media Communication/Fine Art	70 RC	
Media Communication/Marketing	70	
Media Communication/Music	70 RC	
Music/Commerce	86 RC	
Music/Primary Education	70 RC	
Music/Secondary Education	72 RC	
Music/Laws	85 RC	
Music/Science	73 RC	
Politics, Philosophy and Economics/Arts	70 RC	
Politics, Philosophy and Economics/Commerce	78 RC	
BUSINESS		
Accounting	70	
Actuarial Science	86	
Actuarial Science/Master of Actuarial Science	86	
Banking and Finance	70	
Business	70	50
Business Administration	70	50
Commerce	77	
Digital Business	70	
Economics	77	
Finance	77	
Marketing	70	
DOUBLE DEGREES		
Actuarial Science/Commerce	86	
Business/Architectural Design	70	
Business/Arts	70	
Business/Art History and Curating	70	
Business/Accounting	70	
Business/Banking and Finance	70	
Business/Design	70	
Business/International Relations	70	
Business/Marketing	70	
Business/Primary Education	72 RC	
Business/Secondary Education	72 RC	
Business/Fine Art	72 RC	
Business/Information Technology	76	
Business/Media Communication	70	
Commerce/Arts	78	
Commerce/Biomedical Science	85	
Commerce/Computer Science	78	
Commerce/Economics	78	
Commerce/Engineering	77	
Commerce/Finance	78	
Commerce/Global Studies	78	
Commerce/Information Technology	78	
Commerce/Laws	85	
Commerce/Music	86 RC	
Commerce/Politics, Philosophy and Economics	78 RC	
Commerce/Psychology	77	
Commerce/Science	77	
Digital Business/Business	70	
Digital Business/Information Technology	76	
Marketing/Arts	70	
Marketing/Media Communication	70	

COURSE	MG	IES
EDUCATION		
Education – Early childhood and primary education, Primary and secondary education, Primary and secondary health and physical education, Primary and Secondary inclusive education, primary education and Secondary Health/Physical Education Learning Design and Technology	70 RC	
	70	
DOUBLE DEGREES		
Primary Education/Arts	70 RC	
Primary Education/Business	72 RC	
Primary Education/Music	70 RC	
Primary Education/Science	73 RC	
Primary Education/Fine Art	70 RC	
Secondary Education/Arts	70 RC	
Secondary Education/Business	72 RC	
Secondary Education/Music	72 RC	
Secondary Education/Science	73 RC	
Secondary Education/Fine Art	72 RC	
ENGINEERING		
Engineering – Aerospace, Biomedical, Chemical, Civil, Electrical and Computer Systems, Environmental, Materials, Mechanical, Resources, Robotics and Mechatronics, Software	75	
DOUBLE DEGREES		
Engineering/Architectural Design	76	
Engineering/Arts	75	
Engineering/Biomedical Engineering	80	
Engineering/Biomedical Science	85	
Engineering/Commerce	77	
Engineering/Computer Science	78	
Engineering/Design	76	
Engineering/Master of Engineering	80	
Engineering/Information Technology	76	
Engineering/Laws	85	
Engineering/Pharmaceutical Science	75	
Engineering/Science	75	
INFORMATION TECHNOLOGY		
Computer Science	75	
Computer Science Advanced (Honours)	84	
Information Technology	76	50
DOUBLE DEGREES		
Computer Science/Commerce	78	
Computer Science/Engineering	78	
Computer Science/Science	76	
Information Technology/Arts	76	
Information Technology/Architectural Studies	76 RC	
Information Technology/Business	76	
Information Technology/Commerce	78	
Information Technology/Criminology	76	
Information Technology/Design	76	
Information Technology/Digital Business	76	
Information Technology/Engineering	76	
Information Technology/Fine Art	76 RC	
Information Technology/Global Studies	76	
Information Technology/Science	76	
LAWS		
Laws	85	
DOUBLE DEGREES		
Laws/Arts	85	
Laws/Biomedical Science	85	
Laws/Commerce	85	
Laws/Computer Science	85	
Laws/Criminology	85	
Laws/Engineering	85	
Laws/Global Studies	85	

COURSE	MG	IES
Laws/Information Technology	85	
Laws/International Relations	85	
Laws/Music	85 RC	
Laws/Politics, Philosophy and Economics	85 RC	
Laws/Psychology	85	
Laws/Science	85	
MEDICINE, NURSING AND HEALTH SCIENCES		
Biomedical Science	85	
Health Sciences	70	50
Nursing	70 RC	50
Nursing Scholars Program	90 RC	
Nursing and Midwifery	73 RC	
Nutrition Science	70	
Nutrition Science Scholars Program	90	
Occupational Therapy	81	50
Paramedicine	72	50
Physiotherapy	93	
Psychology	75	
Public Health	70	50
Speech Pathology	78	50
Radiation Sciences, Radiation Sciences (Informatics)	70	60
Radiography and Medical Imaging (Honours)	93	
DOUBLE DEGREES		
Biomedical Science/Commerce	85	
Biomedical Science/Engineering	85	
Biomedical Science/Law	85	
Biomedical Science/Science	85	
Health Science/Arts	70	
Psychology/Arts	75	
Psychology/Commerce	77	
Psychology/Law	85	
Psychology/Science	75	
PHARMACY AND PHARMACEUTICAL SCIENCES		
Pharmacy (Honours)	80	
Pharmacy/Master of Pharmacy	80	
Pharmaceutical Science	74	
Pharmaceutical Science Advanced (Honours)	80	
DOUBLE DEGREES		
Pharmaceutical Science/Engineering	75	
SCIENCE		
Applied Data Science	72	
Applied Data Science Advanced (Honours)	80	
Science	72	50
Science Advanced – Global Challenges	80 RC	
Science Advanced – Research (Honours)	84	
DOUBLE DEGREES		
Psychology/Science	75	
Science/Arts	72	
Science/Biomedical Science	85	
Science/Commerce	77	
Science/Computer Science	78	
Science/Education	73 RC	
Science/Engineering	75	
Science/Global Studies	72	
Science/Information Technology	76	
Science/Laws	85	
Science/Music	73 RC	
Science/Psychology	75	

RC – a range of criteria is used for selection in addition to your ATAR, such as an audition or folio. You're guaranteed a place if you're successful in the additional selection criteria. Please note that health courses may also have restrictions due to clinical placements. We've reserved some places for Monash Guarantee students who wouldn't otherwise have been offered a place, and have the strongest results across the range of criteria.

ELITE STUDENT ATHLETE AND PERFORMER ENTRY SCHEME

Monash is committed to helping students combine academic success with sporting or performing arts success. We understand that your ATAR may not fully reflect your potential due to the significant time and dedication required to perform at an elite level.

If you're an elite athlete or performer, you may be eligible for the Elite Student Performer Entry Scheme, which recognises your unique circumstances and achievements. Applications for this entry scheme are submitted directly to Monash University.

For details on eligibility and how to apply, visit:
monash.edu/elite-athlete



HOW TO APPLY

You must submit a Equity Schemes and Scholarships (SEAS) application through VTAC and include Monash University in your course preferences to be considered for equity schemes adjustments and the Monash Guarantee and Monash University scholarships.

Remember to include any documents VTAC asks you to provide.



EQUITY SCHEMES (SEAS) AND MONASH GUARANTEE ESTIMATE CALCULATOR

Check out our online calculator that estimates your equity scheme-adjusted selection rank and provides a list of the courses you may be eligible for. You can also see if you're eligible for the Monash Guarantee.

monash.edu/seas



CLICK HERE
for more information
about our programs

MORE INFORMATION

monash.edu/entry-schemes

E: future@monash.edu

P: 1800 MONASH (1800 666 274)

Monash University reserves the right to alter information, procedures, fees and regulations contained in this document. Please check the Monash University website for updates: monash.edu
All information reflects prescriptions, policy and practice in force at time of publication. Published July 2025. Produced by University Marketing, Admissions and Communications, Monash University. Job 25DES-5591.

CRICOS provider: Monash University 00008C.

ACKNOWLEDGEMENT OF COUNTRY

Monash University recognises that its Australian campuses are located on the unceded lands of the people of the Kulin Nations, and pays its respects to their Elders, past and present.

