



The background of the entire page is a vibrant, abstract artwork. It features a dense, chaotic pattern of colors including yellow, orange, green, purple, blue, and red. The colors are applied in various ways, with some areas showing thick, textured brushstrokes and others appearing as fine, misty sprays. The overall effect is one of dynamic energy and complexity.

**WHY
CHOOSE
MONASH?**



We respect Aboriginal and Torres Strait Islander people and culture. Monash University has campuses in Parkville, Caulfield, Clayton and on the Mornington Peninsula, and we acknowledge the traditional owners of the Kulin Nations on whose land we work, learn and live. We pay our respects to their elders—past and present—and would also like to acknowledge our youth who continue to pave the way.

Cover art credit:

'Story of Recognition of Our Royalty' artwork by Lyn-Al Young and Robert Young

Indigenous Australians are advised that this booklet contains names and images of people who have passed away.

WHO ARE WE?

YOUR HOME AWAY FROM HOME

Studying at university is an important investment in your future, and the William Cooper Institute is here to assist you, from enrolment through to graduation.

Who was Uncle William Cooper?

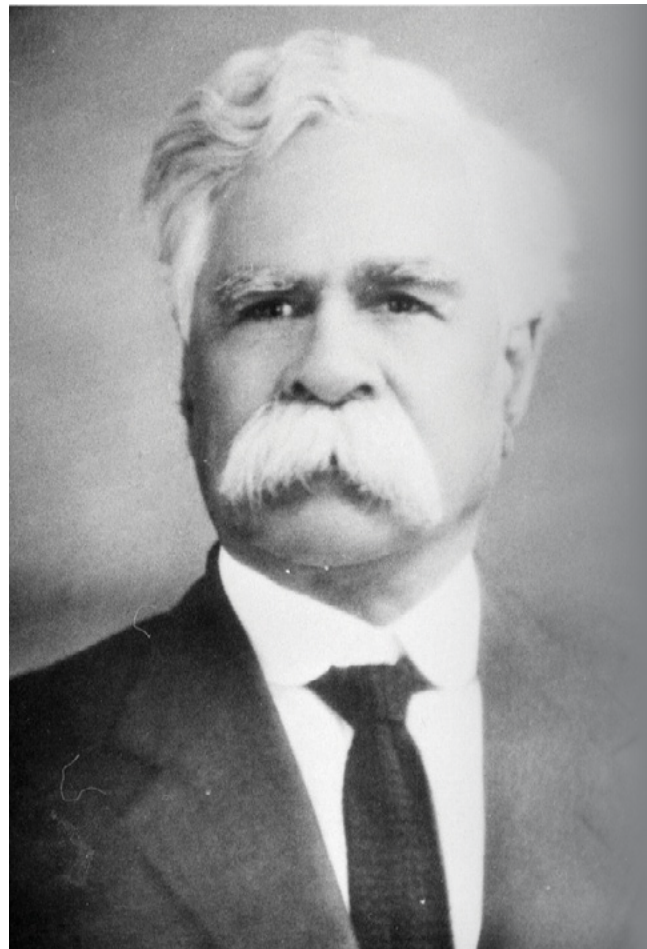
We're incredibly proud to be named in honour of Uncle William Cooper, whose bravery, activism and unwavering pursuit of social justice for all inspires and drives us. He and the organisation he founded, the Australian Aborigines' League, broke new ground by campaigning for the rights of Aboriginal Peoples throughout Australia.

Amongst their many achievements, Uncle William and the League petitioned the British king for representation of Aboriginal people in parliament, called for a day of mourning after 150 years of colonisation and opposed the establishment of an Aboriginal regiment at the beginning of the Second World War.

For more information about Uncle William Cooper, please use the QR code below.



 williamcooper.monash.edu



WE'LL SUPPORT YOU



Students are also supported through programs coordinated by the William Cooper Institute, valued at \$12,000 per year:

Scholarships

Scholarships are a great way of enabling as many bright minds as possible to flourish at Monash. Scholarships may be awarded to you if you get good grades, can demonstrate leadership and community involvement, or if you have a low income.

All Indigenous undergraduate students are guaranteed a scholarship at Monash University.

For prospective students applying through VTAC you're automatically assessed for a scholarship through your course and SEAS application.

Search our full list of scholarships here:



A Monash Sport gym membership

All Indigenous Students get an all-access pass to any of the sporting facilities at Clayton, Caulfield and Peninsula campuses.

Supply of prescribed textbooks

We can purchase any prescribed textbooks, materials and uniforms for the units you're enrolled in each semester.

Access to one-on-one tutoring

As part of our Indigenous Academic Enhancement Program (IAEP), we provide free access to one-on-one tutoring for each of the units you're enrolled in each semester.

ELDER IN RESIDENCE

Aunty Diane Singh is a Yorta-Yorta/Wemba-Wemba Elder, with connections to the Taungurung people, and is our Elder-in-Residence at WCI.

Aunty Di has a long history working in Indigenous education and as part of her role at Monash she provides support to students wanting to make connections with the local community or wanting to find out more about their own family history and connections.

For more information email: diane.singh@monash.edu

📍 monash.edu/indigenous-australians/about-us/our-people/elder-in-residence



EXPERIENCE MONASH CAMP

The Spring Camp aims to provide Aboriginal and Torres Strait Islander students from Years 10–12 with an in-depth insight into university life, while focusing on motivation, meeting new people, culture, confidence building and health and well-being.

- Stories, advice and mentoring from our current students
- Cultural activities
- Hear from community leaders and other inspiring people
- Career and course advice
- Tour of our campus and facilities

For more information:



THE SPRING CAMP WAS A GREAT OPPORTUNITY TO EXPLORE MY OPTIONS AND HEAR FROM CURRENT MONASH STUDENTS. AFTER ATTENDING THE CAMP, I NOW KNOW THAT THERE'S A PLACE FOR ME AT MONASH UNIVERSITY

JETT ROBBINS (YEAR 10)



INDIGENOUS ENTRY TO MONASH

At Monash you're welcomed into a community that is driven to make a difference. You'll leave with a greater sense of purpose, a global outlook, and the skills and confidence to make a positive change – to your own life, and to the lives of your community.

No matter the circumstances, we recognise and support talent. At Monash in partnership with the William Cooper Institute, we offer a flexible admissions policy for all Indigenous applicants that can help you get into your preferred course.

Monash Indigenous Entry Scheme

The Monash Indigenous Entry Scheme offers Aboriginal and Torres Strait Islander applicants admission to a range of undergraduate degrees with a significantly lower ATAR requirement (an achieved ATAR of 50+, higher for some courses).

There are no special classes, extra requirements or time added to the degree for students admitted under this entry scheme and students will graduate with the same Monash degree as any other student.

To be eligible for an offer, you must:

- Be of Aboriginal and/or Torres Strait Islander descent;
- Achieve an ATAR of at least 50 (this may vary for some courses, so please make sure you check the course requirements).
- Meet the course prerequisites (this information can be found in the VTAC course entry guide);
- Complete the VTAC supplementary information form which is available from: [vtac-supp.adm.monash.edu/Supplementary VTAC](http://vtac-supp.adm.monash.edu/Supplementary%20VTAC)
- Add your preferred Indigenous Entry course as a preference on your VTAC application.

Monash Entry Course

Special Entry Access Scheme (SEAS)

SEAS adjusts your ATAR in recognition of circumstances that may have affected your education. The recalculated ATAR will impact your selection rank which is used during the selection process. Check out our SEAS calculator for an estimate of your SEAS-adjusted ATAR via the QR code.

If you have missed out on your chosen course, or it's not included in the Indigenous Entry Scheme, MIAP or a diploma may be a suitable pathway into your preferred Monash degree.



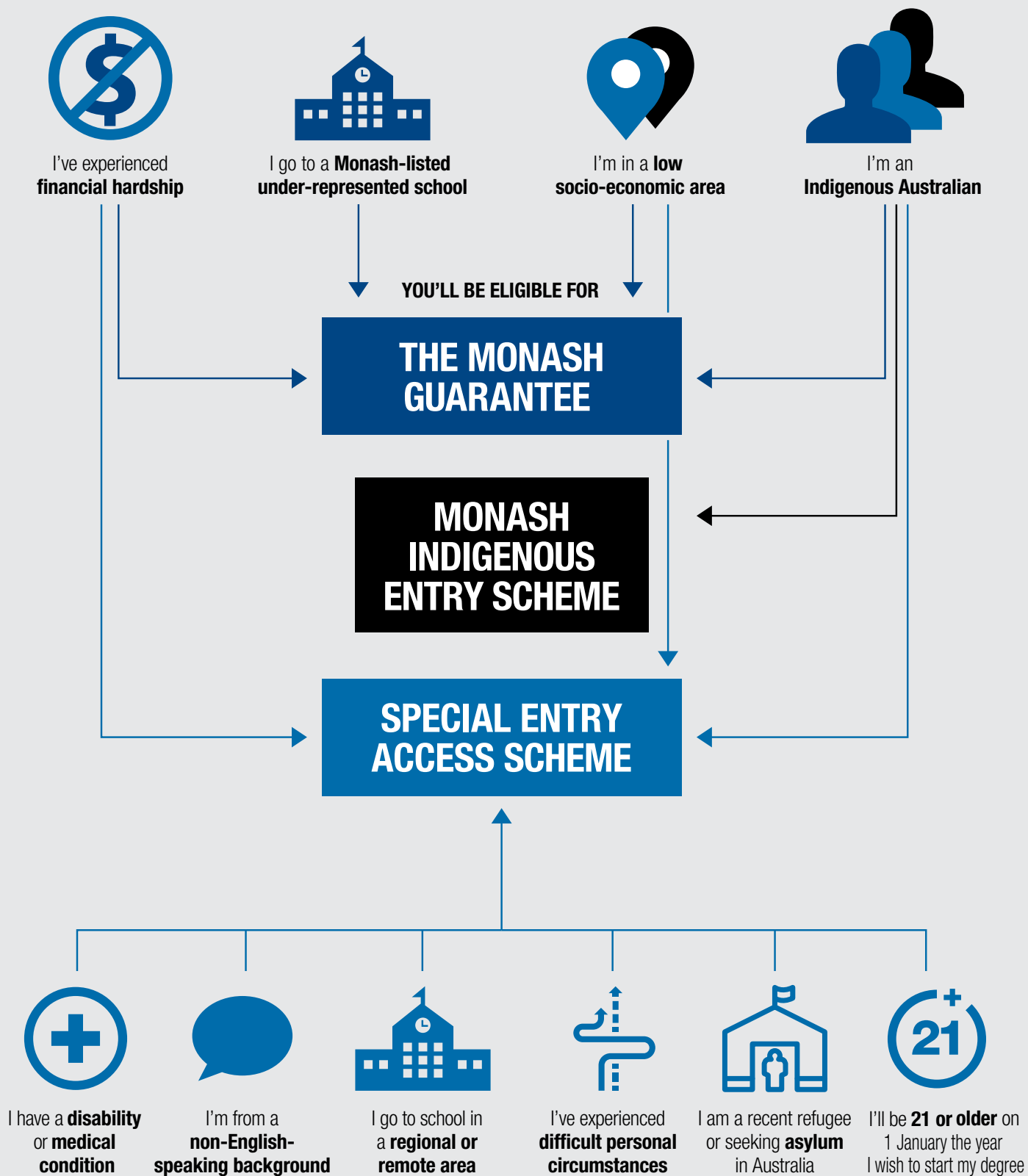
Monash Guarantee

Every Monash course has a Monash Guarantee ATAR lower than the expected selection rank. You could be eligible for entry through the Monash Guarantee if you:

- Have experienced financial disadvantage
- Live in a low socioeconomic area
- Are an Indigenous Australian
- Attend a Monash-listed under-represented school

monash.edu/guaranteedentry

VTAC CODE	INDIGENOUS ENTRY COURSE	ATAR	MONASH DEGREE
2800211831	Architectural Design/Architecture (Indigenous Entry)	65	Bachelor of Architectural Design
2800211671	Art History and Curating (Indigenous Entry)	65	Bachelor of Art History and Curating
2800311291	Arts (Indigenous Entry)	50	Bachelor of Arts
2800211301	Business (Indigenous Entry)	50	Bachelor of Business
2800711421	Business Administration (Indigenous Entry)	50	Bachelor of Business Administration
2800211521	Design (Indigenous Entry)	50	Bachelor of Design
2800311311	Education (Honours – Indigenous Entry)	70	Bachelor of Education (Honours) in Early Years and Primary Education
		70	Bachelor of Education (Honours) in Primary and Secondary Education
		70	Bachelor of Education (Honours) in Primary and Secondary Health and Physical Education
		70	Bachelor of Education (Honours) in Primary and Secondary Inclusive Education
		70	Bachelor of Education (Honours) in Primary Education
		70	Bachelor of Education (Honours) in Secondary Health and Physical Education
2800311331	Information Technology (Indigenous Entry)	50	Bachelor of Information Technology
2800711481	Paramedicine (Indigenous Entry)	50	Bachelor of Paramedicine
2800211491	Public Health (Indigenous Entry)	50	Bachelor of Public Health
2800311501	Radiation Sciences (Indigenous Entry)	60	Bachelor of Radiation Sciences
2800211511	Health Sciences (Indigenous Entry)	50	Bachelor of Health Sciences
2800311341	Nursing (Indigenous Entry)	50	Bachelor of Nursing
2800711351	Occupational Therapy (Honours – Indigenous Entry)	50	Bachelor of Occupational Therapy (Honours)
2800311361	Science (Indigenous Entry)	50	Bachelor of Science



YOUR PATHWAY TO MONASH UNIVERSITY



If you don't qualify for direct entry into one of our courses, don't worry, there are still plenty of ways to study at Monash. One of our pathway options can smooth the way into the course of your choice.

Monash Indigenous Access Program (MIAP)

MIAP is a scholarship-funded bridging program designed to prepare students for entry into a variety of undergraduate degrees at Monash University. This pathway is specifically designed to support Indigenous Australians in making a successful transition to university study.

The program develops skills that enable success in a university environment. The Indigenous Non-Award Pathway (INAP) is the part-time version of MIAP. You can apply if you:

- Haven't completed Year 12
- Graduated on a non-ATAR pathway
- Received an ATAR under 50
- Are mature aged without previous study experience

On completion of this program, students are directly admitted into the first year of their destination degree of choice.



For more information:

monash.edu/indigenous-australians/study/admissions-and-pathways/miap-inap

Diploma of Tertiary Studies (DoTS)

DoTS provides an alternative entry pathway that is equivalent to the first year of a university undergraduate course. When you apply for DoTS, you will select a preferred stream. You'll have the flexibility to choose a stream that interests you from business, education or nursing.

The stream you choose forms the first year of your course, and determines which Monash course you'll progress to. All streams are delivered at the Peninsula campus.

- Business
- Education
- Nursing



For more information:

monash.edu/study/courses/find-a-course/2023/tertiary-studies-d0502

Diploma of Higher Education (DoHE)

DoHE provides an alternative entry pathway into a range of undergraduate courses in Education and Science. When you apply for DoHE, you will select a preferred stream - Education or Science. The stream you choose forms the first year of your course, and determines which Monash course you'll progress to. All streams are delivered at the Clayton campus.



For more information:

monash.edu/study/courses/find-a-course/2023/higher-education-d0501



ALONG WITH
THE SUPPORT
OF THE WILLIAM
COOPER INSTITUTE,
THE MONASH
INDIGENOUS ACCESS
PROGRAM HAS
PROVIDED A SMOOTH
TRANSITION INTO
UNIVERSITY LIFE

BROOKE PONTER

DISCOVER YOUR OPTIONS

You may or may not have ideas about what you want to pursue as a career. Either way, it's important to keep your options open and have all the information needed to make the right decision for you.

CAMPUS TOURS

If you're considering Monash University, join us on a tailored and interactive campus tour.

It's a great way to see and experience each of our campuses.

Tours will be guided by a WCI staff member, who will take you around the campus and show you some of the main facilities and buildings. Register for a tour here:



VIRTUAL TOURS

You can also immerse yourself in some of the key Clayton spaces through a virtual tour here:



SCHOOL VISIT

We can come to you! If you would like us to attend an event, visit your school or organisation please get in contact with us.

E: wci-study@monash.edu



WCI BULLETIN MAILING LIST

The WCI Bulletin has the latest course and scholarship information plus tips and events updates. Subscribe to our mailing list here:



1:1 CHAT

Have a question you can't find the answers to? We offer one-on-one phone or zoom consultations to answer any questions you may have. Book a 1:1 chat now:





SCIENCE, NUMBERS AND TECHNOLOGY



I'M GOOD AT



WORDS, PICTURES AND STORIES

Engineering <
Medicine, nursing and health sciences <
Pharmacy and pharmaceutical science <
Science <

HELP COMMUNITY

- Arts
- Education
- Law
- Medicine, nursing and health sciences

Business <
Engineering <
Information technology <
Medicine, nursing and health sciences <
Pharmacy and pharmaceutical science <
Science <

IMPROVE THE LIVES OF OUR COMMUNITIES

- Art, design and architecture
- Arts
- Education
- Business
- Law

Engineering <
Information technology <
Science <

BUILD THINGS

- Art, design and architecture

Engineering <
Information technology <
Science <

DESIGN AND CREATE THINGS

- Art, design and architecture

Engineering <
Information technology <
Science <

CARE FOR THE LAND

- Art, design and architecture
- Arts
- Business
- Law

Business <
Science <

MAKE MONEY WORK

- Business
- Law

Business <
Engineering <
Information technology <
Medicine, nursing and health sciences <
Pharmacy and pharmaceutical science <
Science <

EXPLAIN THINGS TO PEOPLE

- Art, design and architecture
- Arts
- Business
- Education
- Law

Information technology <

ENTERTAIN

- Art, design and architecture
- Arts

ACCOMMODATION OPTIONS



Where you'll live is one of the most important decisions you'll make at university. From shared and single rooms on-campus to tips for renting your own place, Monash Residential Services (MRS) are here to help.

MRS looks after all aspects of student accommodation at Monash University. They're committed to providing you with the care, support and enrichment you need to make the best of your time at university.

On-campus options

Looking to share an apartment with other students? Or perhaps you're after the privacy of a single room? Living on campus puts you in the middle of a vibrant community.

At Monash we are very honoured to have two halls, Briggs Hall and Jackomos Hall, named after two powerful Indigenous women, Mrs Geraldine Briggs (Aunty Gerry) and Mrs Merle Jackomos.

Scan the QR code to explore our on-campus options.



Briggs Hall

Briggs Hall is a modern five-storey building divided into two wings and home to 300 residents. Briggs Hall is named in honour and recognition of Mrs Geraldine Briggs AO (Aunty Gerry). Aunty Gerry has tribal connections to the Yorta Yorta tribe on her mother's side and the Wiradjeri tribe through her father. Aunty Gerry was instrumental in the establishment of the Victorian Aboriginal Health Service, the Victorian Aboriginal Legal Service and of many organisations that are today delivering services to the Aboriginal community.

Scan the QR code to find out more about the Briggs Hall.



Jackomos Hall

Jackomos Hall is a modern five-storey building that is home to 300 residents. Jackomos Hall is named in honour and recognition of Mrs Merle Jackomos OAM. Merle has tribal connections with the Yorta Yorta nation. Merle, along with a small group of Victorian Aboriginal women, lobbied tirelessly to establish numerous services for Aboriginal people; including the Aboriginal Elders Community Services, Aboriginal Legal Service, Aboriginal Women's Refuge and Aboriginal Health Service.

Scan the QR code to find out more about the Jackomos Hall.



Off-campus options

Make an informed decision about your new home. If you're looking to rent a place off-campus, we have some great tips on where to look and what you'll pay. Explore our off-campus options here:



Buddy program

For on campus students, MRS offers a buddy program. The buddy program aims to help new residents with their transition to university study and living away from home, and give returning residents an opportunity to support another resident and make new connections in the community. We believe that returning residents can help new residents by sharing their experiences, providing insights into university and life on campus, and being there to answer questions or hear any worries or concerns.



Sample studio room



Image: Jackomos Hall, student accommodation, Clayton campus.



EXPLORE OUR AREAS OF STUDY BELOW

SO MUCH TO CHOOSE FROM

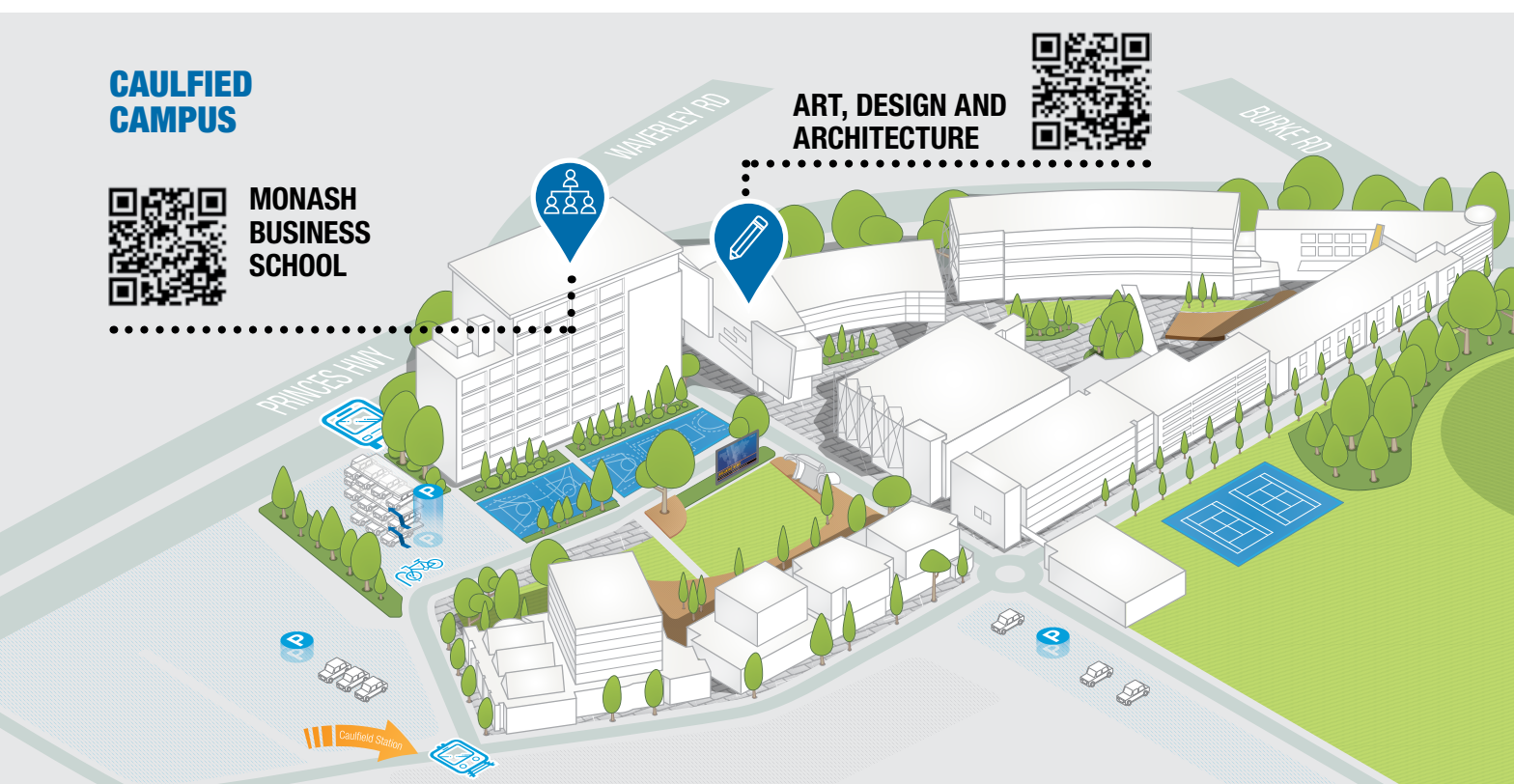
Our large range of courses allows you to match your studies with your ambitions. You can start specialising from day one or use our flexible course structures to explore different interest areas. Take a double degree, extend your major, or pick up a minor; our courses are all about working out what's best for you. You'll find that we have one of the widest ranges of courses in Australia.

CAULFIELD CAMPUS



**MONASH
BUSINESS
SCHOOL**

**ART, DESIGN AND
ARCHITECTURE**



PARKVILLE CAMPUS



**PHARMACY AND
PHARMACEUTICAL
SCIENCES**



CLAYTON CAMPUS

INNOVATION WALK
COLLEGE WALK
ALLIANCE LANE
RESEARCH WAY
SPORTS WALK
SCENIC BOULEVARD
WELLINGTON ROAD
EXHIBITION WALK
CHANCELLERY
CAMPUS CENTRE
LIBRARY
SPORTS GROUND
BICYCLE

LAW
EDUCATION
SCIENCE
ARTS, HUMANITIES & SOCIAL SCIENCES
INFORMATION TECHNOLOGY
ENGINEERING

PENINSULA CAMPUS

MEDICINE, NURSING & HEALTH SCIENCES

McMAHONS ROAD

AA

GILLIES HALL

QR code linking to the Medicine, Nursing & Health Sciences page.

13

FAQs

What is an undergraduate course?

The first level of tertiary studies at university, including diploma or bachelor's degree courses.

What is a graduate or postgraduate course?

Further study completed after you graduate with a bachelor's degree.

What is a degree?

The academic title you get when you complete a course of study. For example: Bachelor of Arts or Master of Business.

What is a double degree?

A Monash double undergraduate degree course allows you to study towards two degrees at the same time. This means you can keep your options open, develop expertise in different but complementary areas, or simply pursue two areas of interest in greater depth.

What are comprehensive courses?

Comprehensive courses offer flexibility and choice. You start studying a range of disciplines, then progressively focus on one or two study areas. Our comprehensive courses are in Arts, Business, Business Administration, Commerce, Information Technology and Science.

What are specialist courses?

Specialist courses offer focus and depth from the start. Some are designed to prepare you to practise in a specific profession, while others concentrate on developing particular expertise but apply to a broader range of related careers. Examples of specialist courses include Engineering, Marketing, Education, Nursing and Pharmacy.

What is a unit?

A subject that runs for one semester. Units are the building blocks of a course. Most undergraduate courses are made up of eight units per year (four per semester) and are generally worth 6 credit points each.

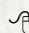
How much does university cost?

All students who attend university are required to pay fees. If you're an Australian citizen, government loans and subsidies help with these costs – you'll enrol in a Commonwealth Supported Place (CSP) and receive a subsidy. Most Australian students don't pay any tuition fees upfront thanks to the HECs-HELP loan scheme.

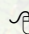
Most of your tuition is covered by the government – the rest is loaned to you. This government loan program allows you to defer the payment until your income reaches a certain threshold. For more information, visit www.studyassist.gov.au

How do I apply for university?

If you plan to start university in the first semester at Monash, you must apply via VTAC, unless otherwise specified in this guide. Applications to VTAC generally open in early-August each year. If you're applying for mid-year entry (April, July or October intakes), you must apply directly to Monash. Not all courses offer a mid-year intake.

 www.vtac.edu.au

 monash.edu/admissions/apply/online

 monash.edu/study

What if I don't meet the entry requirements for the degree I am interested in?

At Monash we have a flexible admissions policy for Indigenous applicants. Explore the options that Monash offers, if you don't meet the requirements for direct entry. Explore your Pathway options on page 7.







Monash University in collaboration with the William Cooper Institute hosted the 2023 Indigenous Nationals.

“

THE WILLIAM COOPER INSTITUTE
HELPED ME SETTLE INTO
UNIVERSITY LIFE BY OFFERING
A SAFE AND SUPPORTIVE
ENVIRONMENT. I'VE MADE
FRIENDS WHO I KNOW WILL
LAST A LIFETIME

KAIMANA TEOHAERE

Duan Islands (Torres Strait Islands)

Bachelor of Science



DISCOVER MORE

Discover Monash

Do you want to learn more about Monash, get a feel for which course is right for you, or perhaps experience what life and study would be like on one of our four campuses? We've got an event to suit you.

Discipline and Course events

Hear from current and past students as well as academics across our ten faculties. You'll find out more about our courses, internships, career outcomes and so much more!

Campus experience events

Join us at Open Day to see and experience student life at Monash. You can also tour one of our four Victorian campuses throughout the year. Can't make it to a tour? That's ok, we have a virtual option for you.

Find out more! 📄 monash.edu/discover

Contact the William Cooper Institute:

Future student enquiries

T: 03 9902 4972

E: wci-study@monash.edu

Instagram

@william.cooper.institute

