

# NEWSLETTER

Monash Faculty of Pharmacy and Pharmaceutical Sciences



**EMCR award successes**  
**Spotlight on new EMCRs**  
**Recent & upcoming events**  
**Seminars and grant opportunities**

# Welcome to FPPS EMCR Newsletter

## A letter from the editors

We are excited to launch the November issue of the FPPS EMCR newsletter. As we approach the close of 2025, it is a good opportunity to pause and reflect on the progress we have made together. This past year has been one of tremendous energy and accomplishment across our research and academic community, marked by innovative discoveries, new collaborations, and the translation of science into meaningful impact.

The wonderful cover image of this newsletter is brought to you by the Laura Humphrys from Metabolic Receptor Biology (MRB) Laboratory. This image is the winning submission of the CCEMMP 2<sup>nd</sup> Annual Bench to Art Exhibition 2025. For more information on the cover image, please read page seven of our newsletter.

Please scan the QR code below to follow our newly launched LinkedIn page. This is where details of upcoming events will be posted.

On behalf of the editorial team, I would like to extend our warmest wishes to all our readers for a restful and joyful festive season. May the holidays bring you time to recharge, and may the new year bring in renewed curiosity, collaboration, and discovery. As we look ahead to the coming year, we remain inspired by the momentum built through your contributions. Take care as we enter the end of year period!

Best wishes,

*Kirsten Yannee and Grace*

**Co-editors**

**FPPS EMCR Newsletter**



## IN THIS ISSUE

- 02 Chairs' report
- 03 EMCR Committee
- 04 Event highlight | MELBR Symposium
- 05 Event highlight | Leadership Building Workshop
- 06 Recent grant successes
- 07 Cover Image | MRB Lab
- 08 Spotlight | Livia Salvati-Manni
- 09 Funding Opportunities & Upcoming Seminars
- 10 Parents Group Lunch
- 11 EMCR EOY Celebration
- 12 MIPS Research Symposium



# FPPS EMCR COMMITTEE COMMITTEE CHAIR'S REPORT

## From the Chair

Welcome to the November edition of the FPPS EMCR newsletter – the final issue for the year. MIPS EMCRs have not slowed down at all in the home stretch of 2025, and you can read more about some of the community's many achievements in this issue. A recent highlight in our calendar was the **MELBR symposium**, which brought together EMCRs from 12 biomedical research institutes for a day of science and networking (p. 4). This is the third year we have been part of the MELBR consortium, and it has only gone from strength to strength. In November, the FASTtrack team held a workshop on **Building Leadership in Research**, featuring Prof. Denise Wootten, A/Prof. David Thal, and Dr Dan Priebbenow. We would like to thank all of the panellists who have participated in either FASTtrack or MELBR events in 2025 for their generosity with their time and insights.

The past few months have also brought change for the committee. We farewelled **Jeff Luo**, our committee co-chair, who has taken up a position overseas. It has been a pleasure to work with Jeff and his enthusiasm will be greatly missed. On behalf of the committee, I would like to extend our thanks and best wishes in his future endeavours. We warmly welcome **Serena Teo** to the committee as MELBR liaison. Under the leadership of **Liam Koehn**, the Parents Group subcommittee is establishing itself as a separate entity to better serve all parents within MIPS. We support this wholeheartedly and look forward to continuing to collaborate closely with the Parkville Parents Group.

Finally, we would like to thank YOU, the EMCR community, for continuing to show up even when the gig is tough and times (funding) uncertain. The pace at this time of year can be frenetic, but we hope you can join us for our end-of-year celebration (**27<sup>th</sup> November**) to catch up with friends old and new across the faculty. If you're in a more reflective mood, why not let us know what you think of our activities this year (at [pharm-emcr-committee@monash.edu](mailto:pharm-emcr-committee@monash.edu))? In the meantime, we wish you a safe and reinvigorating break, and we look forward to continuing to serve you as a committee in 2026.



*Dorothy Wai*

EMCR Committee Chair

# FPPS EMCR COMMITTEE

## 2025 COMMITTEE MEMBERS



**Carlo Giannangelo**  
Secretary



**Sandra Vargas**  
Treasurer



**Gracia Gracia**  
FASTtrack



**Jesse Mobbs**  
FASTtrack



**Enyuan Cao**  
FASTtrack



**Sanjeevini Babu Reddiar**  
FASTtrack



**Liam Koehn**  
Parents' group



**Pouya Dehghankelishadi**  
Social



**Aaron Day**  
Social



**Serena Teo**  
MELBR Liaison



**Kyung Min 'Kirsten' Lee**  
Co-editor &  
Social Media  
Liaison



**Grace Mennen**  
Co-editor



**Yannee Liu**  
Co-editor

EMCR Committee is looking for an enthusiastic co-chair to work with Dorothy Wai! please send your EOI to [pharm-emcr-committee@monash.edu](mailto:pharm-emcr-committee@monash.edu)

## RECENT EVENTS

**MELBR SYMPOSIUM****MELBR** MELBOURNE EMERGING LEADERS IN  
**BIOMEDICAL**  
**research**

The Melbourne Emerging Leaders in Biomedical Research Symposium 2025, a joint initiative of 12 EMCR groups in Melbourne biomedical research institutes, was successfully held on 11th of September 2025. This event attracted 80 registrations from postdoctoral researchers and event sponsors such as QIAGEN to celebrate and elevate the collaboration of Melbourne's vibrant biomedical research ecosystem.

The symposium began with an inspiring career panel discussion, featuring Dr. Amanda Vrselja (Brandon Capital), Dr. Quentin Gouil (ONJCRI), Dr. Madeline Dans (WEHI), Dr. Isabel Lopez Sanchez (CERA) and Dr. Hamish McWilliam (Proxima Bio), who shared their valuable insights into diverse career pathways across academia and industry.

16 EMCR speakers (selected from 40 submitted abstracts) showcased their work across three oral presentation sessions including: tumour ecosystems & immunology, metabolism & cardiovascular therapeutics and genomics & epigenetics technologies. The poster and networking session further sparked the engaging discussion and fostered future collaboration among attendees.

Since 2023, MIPS EMCR committee has been an active member of The Melbourne Emerging Leaders of Biomedical Organising Committee, co-hosting symposium events and networking activities to support MIPS EMCRs in building connections and fostering cross-institutional collaboration across Melbourne.



Jeff Luo

Jeff Luo

# Building Leadership in Research

A full house in Level 5 meeting room heard from three research leaders who graciously provided insights into the strategies they've used throughout their careers. EMCRs came away with plenty of tips and tricks to build their own leadership.



**Daniel  
Priebbenow**



**David  
Thal**



**Denise  
Wootten**

## **START SMALL:**

Join committees, milestone review panels, conference organising committees. Start a journal club, peer review for journals, take up editorial roles within journals. Don't do so much you forget your research!

## **BUILD A BRAND:**

What have you done that sets you apart? How can you stay at the forefront of research within your niche? Can you collaborate to ensure your research remains of interest as multidisciplinary teams become more necessary?

## RECENT EMCR SUCCESS GRANTS

### AESON CHANG

#### Gilead Sciences Research Scholars Program Grant

*The potential role of anti-nausea medication*

Dr Aeson Chang has received a Gilead Sciences Research Scholars Program grant to build on recent findings published in the Journal of the National Cancer Institute. The study of 13,811 women with early-stage breast cancer found that a commonly used anti-nausea medication during chemotherapy was associated with a 17% reduction in breast cancer mortality and an 11% lower recurrence risk. The benefit was greatest in triple-negative breast cancer, with a 39% lower risk of death and 34% lower recurrence at 10 years. Dr Chang's grant will support deeper investigation into these promising results.

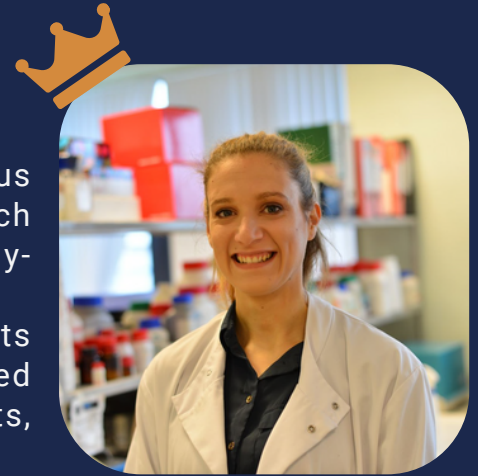


*Congratulations also to...*

### LAURA HUMPHRYS

Dr Laura Humphrys is the latest recipient of the prestigious Pickford Award by the British Pharmacological Society, which provides up to £10,000 in career-enhancing funding for early-career researchers in pharmacology.

This award recognises Dr Humphrys' outstanding achievements and the strength of her research, supporting her continued professional growth through funding for research costs, technical support, and training.



### ANNALIESE DILLON & ANIDA VELAGIC

Drs Annaliese Dillon and Anida Velagic have received the 2025 Ian Fehring Innovation Seed Grant, a Victorian Heart Institute initiative. Their multidisciplinary efforts seek to deliver a first-in-class treatment that improves survival and quality of life for patients with Heart Failure with Preserved Ejection Fraction (HFpEF).



COVER IMAGE  
**MRB Lab**

# COVER IMAGE FEATURE



## MRB Laboratory

 [website](#)

**The Metabolic Receptor Biology (MRB) Laboratory:** Uses a multidisciplinary approach that encompasses structural and computational biology, molecular and mathematical modelling, biochemistry and cellular signal transduction, native tissue bioassays and preclinical animal models to study and understand two key paradigms of drug action at these receptors, specifically, allosteric modulation and biased agonism.

**What is this image?** Scented, handmade soy wax candle of the TRPV4; A representative of the heat-sensitive ion channel family. "The gradient of colour shows the flow of activation from top to bottom, outside the cell to inside the cell. The top red/orange is scented as bonfire and lit by fire for heat sensation, and the bottom section inside the cell is scented with lemon myrtle, a gentle citrus ready to accept basic ions when activated."

\*Image is the winning submission to the CCEMMP 2<sup>nd</sup> Annual Bench to Art Exhibition 2025. Check out the other prize winners [HERE](#)

**Do you want to see YOUR image on the newsletter front cover? We do!!**

Send it to: [pharm-emcr-committee@monash.edu](mailto:pharm-emcr-committee@monash.edu)

## SPOTLIGHT: EMCR FEATURE



# Livia Salvati Manni

“ I am a scientist specialising in colloidal chemistry and an expert in small-angle scattering. My work investigates how lipids and other amphiphiles self-assemble and behave in complex and physiological environments. ”

### Research Fellow D4

#### WHAT IS YOUR RESEARCH AREA?

Currently, I am studying the digestion of fat-rich formulations to better understand lipid phase transitions during digestion and to support the design of improved nutritional formulations aimed at addressing malnutrition in the elderly. My broader research focuses on how environmental conditions - such as pH, temperature, solvent composition, and ionic strength - influence lipid self-assembly, structure and dynamics. In previous work, I explored lipidic self-assembly in extreme environments, including high-salt conditions, pure ionic liquids, and sub-zero temperatures, using X-ray and neutron scattering to connect molecular interactions to mesoscale organisation.

#### WHAT DO YOU HOPE TO DO IN THE FUTURE?

I aim to continue developing advanced experimental and analytical methods to study soft and biological materials in complex environments, connecting molecular-scale understanding with applications in nutrition, biomaterials, and nanostructured formulations.

#### WHAT ARE YOUR INTERESTS OUTSIDE OF WORK?

Outside the lab, I enjoy cooking for friends, rock climbing, exploring new places, and spending time outdoors.

#### READ SOME OF LIVIA'S RECENT PUBLICATIONS

[Exploiting salting effects to tune morphology and phase boundaries of lipidic mesophases](#), X Yut, LS Manni\*, WK Fong, S Rugmai, JS Siegel, *Journal of Colloid and Interface Science*, 139053

[Lipidic drug delivery systems are responsive to the human microbiome](#), J Caukwell, S Assenza, KA Hassan, BA Neilan, AJ Clulow, LS Manni\*, WK Fong\*, *Journal of Colloid and Interface Science* 677, 293-302

[Inelastic neutron scattering and spectroscopy methods to characterize dynamics in colloidal and soft matter systems](#), LS Manni, K Wood, A Klapproth, GG Warr, *Advances in Colloid and Interface Science* 326, 103135, 5 2024

[H-bond network, interfacial tension and chain melting temperature govern phospholipid self-assembly in ionic liquids](#), LS Manni, WK Fong, K Wood, N Kirby, S Seibt, R Atkin, GG Warr, *Journal of Colloid and Interface Science* 657, 320-326

✉ [Livia.SalvatiManni@monash.edu](mailto:Livia.SalvatiManni@monash.edu)

Do you want to see YOUR story or achievements featured in the next newsletter?

We'd love to hear from you!



[pharm-emcr-committee@monash.edu](mailto:pharm-emcr-committee@monash.edu)

## FUNDING OPPORTUNITIES

# GRANTS & AWARDS

Date	Funding opportunity
26-Nov-25	ARC - Industrial Transformation Research Hubs (ITRH26)
26-Nov-25	ARC - Industrial Transformation Training Centres (ITTC26)
26-Nov-25	NHMRC - Partnership Projects (PRC3)
13-Dec-25	ARC - Discovery Projects

## UPCOMING SEMINARS

# MIPS SEMINARS

The following seminars will be held at 12pm in Lecture Theatre 3, Floor 2, Sissons Building, unless advised otherwise. If you wish to be added to the seminar mailing list, please email [sandra.vargas@monash.edu](mailto:sandra.vargas@monash.edu)

Date	Presenter	Chair
03-Dec-25 (10-11am AEDT)	Artificial intelligence for drug delivery: Yesterday, today and tomorrow - Professor Defang Ouyang	AI Meets Pharma

F P P S E M C R S U B - C O M M I T T E E  
**PARKVILLE PARENTS GROUP**

# End-of-year Lunch

**When:** Wednesday 26th  
November 12:00–1:00pm

**Where:** Large Meeting Room,  
Level 5, Building 4



The Parkville Parents Group would like to welcome you to our end-of-year catch-up. Come along and enjoy a catered lunch and take the chance to get to know some fellow parents at MIPS. Welcome to all staff and students including long-time parents, new parents and prospective parents.

Interested in attending?  
Please RSVP on our form to assist with catering:

**RSVP HERE**



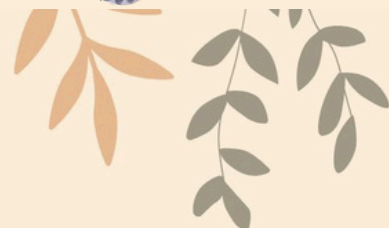
## Did you know?

The Parkville Parents Group has a **travel stroller and travel cot** available for free hire to assist you in travelling to conferences and other work events!

Want to know more? Just email us  
✉ [Mips.parents@monash.edu](mailto:Mips.parents@monash.edu)



# Parkville Parents Group



UPCOMING EMCR EVENT  
**EMCR EOY CELEBRATION**

# EMCR END OF YEAR CELEBRATION




**THURSDAY 27TH NOVEMBER 2025**  
**3:30-5 PM**  
COSSAR HALL TUTORIAL ROOMS  
(CHR1 & CHR2)

Registration essential →



UPCOMING FACULTY EVENT  
**MIPS RESEARCH SYMPOSIUM**



 **Date: Tuesday, 2 December 2025**

 **Location: Monash Docklands campus - 750 Collins - 213-Auditorium**

 **Time: 9am to 5pm + Celebration and Networking 5-7pm**

### Program Highlights:

Global Health  
Cardiovascular & Metabolic Health  
Neuroscience & Mental Health  
Technology Development & Translation  
Closing Celebration

### How to get there?

- By train: Hop off at Southern Cross Station and a 300m walk to the venue.
- By tram: Trams #11 and #48 stop right outside the venue.
- By bus: Routes 232, 235, and 237 stop directly in front of the building.
- By car: No Monash parking but Wilson Parking operates behind the venue.

We look forward to seeing you there!

Do you have any questions?  
[mips.research@monash.edu](mailto:mips.research@monash.edu)