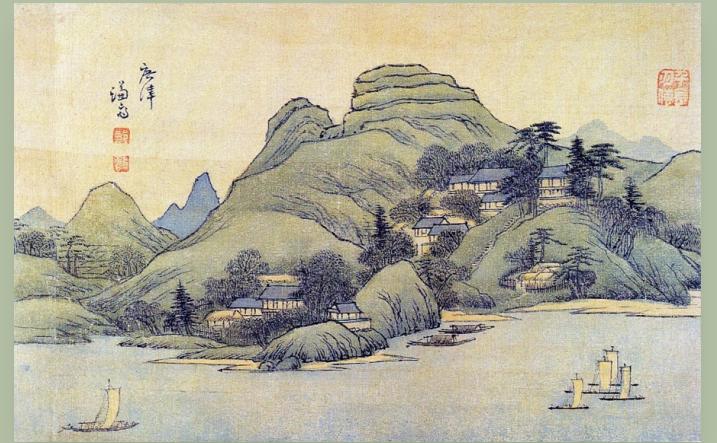


RIVERSCAPE HABITATION SPORTS COMMUNITY COMPLEX SEOUL



Aerial photograph provided by Metropolitan Seoul City

Remediation of the Ground/Site – Seoul Sports Complex and Civic Center

Can a fragmented sports precinct be reconfigured as an integrated civic landscape that supports both international competition and everyday community life?

This studio examines the regeneration of the Gwangjang-dong sports facility site at the edge of Seoul, adjacent to Achasan Mountain and the Hangang River. Designated in 1978 and developed without a coherent urban strategy, the site remains spatially fragmented and partially inaccessible. The project calls for a systematic reorganization that transforms the complex into an open public park and regional civic hub.

While the broader competition brief proposes an international-standard multi-purpose arena, this studio focuses on the architectural design of community and cultural facilities operating alongside the sports complex. Students will develop flexible civic spaces—such as community centres, learning environments, gathering spaces, and public amenities—that support professional events while activating everyday public life.

Working across urban and architectural scales, the studio investigates restoration of site identity, coexistence between the everyday and the exceptional, and the realization of public value through adaptable spatial strategies.

Field research and a study tour to Seoul will support engagement with site, context, and the frameworks of international competition and public procurement.