

Issue 1  
January 2017



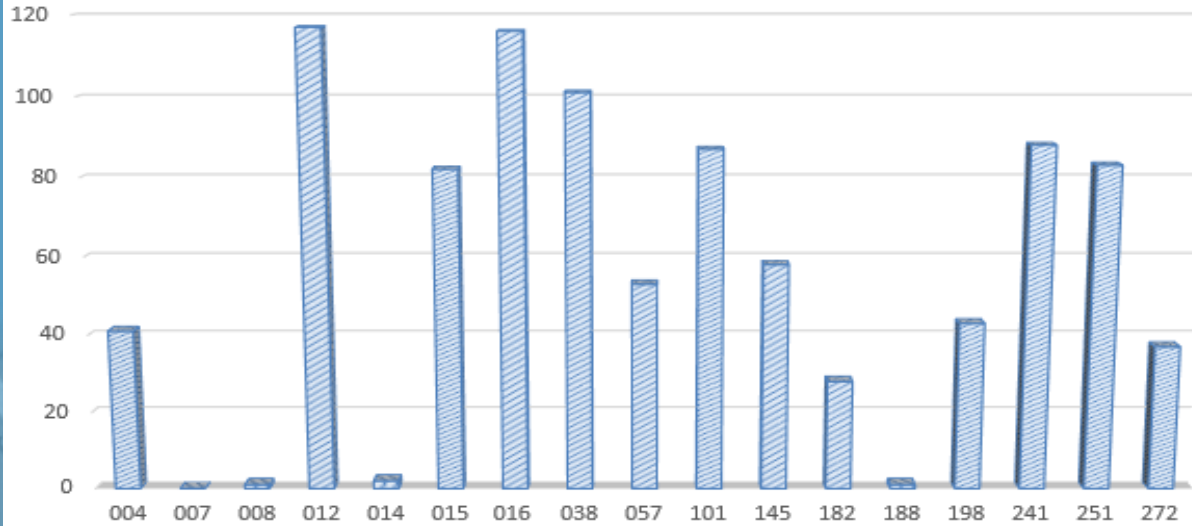
TARGET  
Nutrition Study

Newsletter

The Augmented versus Routine approach to Giving Energy Trial

Recruitment  
940/4000

Site Recruitment (21/06/2016 to 01/02/2017)



Sites started January/February 2017

(Royal Hobart Hospital will start next week)

- St George Hospital
- Royal North Shore Hospital
- Royal Melbourne Hospital
- The Queen Elizabeth Hospital

Contact  
Details

Project Manager:

Lorraine Little

Telephone:

+61 (0)3 9903 0513

Mobile:

+61 (0)437 207 413

Email:

lorraine.little@monash.edu

NZ Project Manager:

Sally Hurford

Telephone:

+64 (0)4 805 0233

Cellphone:

+64 (0)21 034 5515

Email:

Sally.Hurford@ccdhb.org.nz

Congratulations to our 5 top recruiters for January and the biggest thank you to our recruiting sites for your excellent recruitment.

Royal Prince Alfred Hospital—33 patients

University Hospital Geelong—12 patients

Christchurch Hospital—11 patients

Austin Hospital—10 patients

Middlemore Hospital—9 patients

Auckland City Hospital CVICU—9 patients

