

EXCEL Registry Data Access and Publication Policy

Version 1.4 – September 1st 2025

Contents

1.0	Overview and Purpose	2
2.0	Access to, and Extraction of, Data from the EXCEL Registry	2
2.1	Participating Site Access to Own Data held in the EXCEL Registry	2
2.2	Other Requests for Access to Data held in the EXCEL Registry	3
2.3	Data Request Risk Identification	4
2.4	Approved Access to Data in the EXCEL Registry.....	4
2.5	EXCEL Management Data Access.....	5
2.6	Reports Produced by EXCEL and ANZIC-RC	5
2.7	Guidelines for Cost Recovery	5
3.0	Process for data requests for publication	5
3.1	Guidelines for Publications, Presentations and Media Release of EXCEL Data	5
3.2	Process for Publications and Presentations, including Scientific Meetings and Media	6
3.3	Post Approval - Publication Data Terms and Conditions.....	6
3.4	Specific Guidelines for Acknowledgements and Authorship.....	7
	APPENDIX A – EXCEL Registry Data Request Risk Matrix	8
	APPENDIX B – Data Request Flowchart	9
	APPENDIX C - List of Human Research Ethics Committees registered with NHMRC.....	10

1.0 Overview and Purpose

The EXCEL Registry aims to create a binational, multidisciplinary network of integrated care for patients suffering acute cardiac or respiratory failure requiring extracorporeal membrane oxygenation (ECMO). The overarching goal is to monitor long-term outcomes and identify best practices for ECMO treatment. This registry provides critical feedback to Australian and New Zealand ECMO sites regarding patient outcomes, offering a comprehensive analysis of data from both local and binational perspectives.

The EXCEL Data Access Policy applies to any and all individuals, or institutions, that wish to utilise EXCEL Registry data for clearly defined purposes. Data collected for the EXCEL registry is conducted under an ethical framework project (43134; Project Reference: 534/18) and National Mutual Acceptance (NMA) Scheme, and meets the requirements of the National Statement on Ethical Conduct in Human Research (approved on 28th November 2018).

EXCEL Registry data is collected at participating institutions in Australia and New Zealand. The provision of data to EXCEL is subject to strict guidelines as submitted to Human Research Ethics Committees. Monash University is the custodian of all data submitted to the EXCEL Registry. Access to EXCEL Registry data is guided by the Data Access Policy to ensure adherence to ethical principles. Participating institutions permit the appropriate use of data within the EXCEL Registry.

This document outlines the Data Access Policy for the EXCEL Registry and contains information agreed to by the EXCEL management committee.

It is highly recommended that prior to formulating and submitting an EXCEL data request, researchers contact the EXCEL project manager to discuss the proposed protocol. This is to ensure that the proposed research aligns with the goals of the Registry and that no overlap exists with previously executed data requests.

Please contact:

EXCEL Project Manager

Email: excelregistry1@monash.edu

2.0 Access to, and Extraction of, Data from the EXCEL Registry

The following points outline the EXCEL Registry Data Access Policy and are in line with the ANZIC RC Data Sharing Policy.

2.1 Participating Site Access to Own Data held in the EXCEL Registry

- 2.1.1 Participating sites that contribute data to the EXCEL Registry have the right to access their own data, which can be accessed directly from the EXCEL REDCap database.
- 2.1.2 Single site data for internal audits, quality projects and publications: participant sites are welcome to use their own data for audits, quality projects and publications. No further permission needs to be given for that. Publication (acknowledgement of the use of the EXCEL Registry data)

2.2 Other Requests for Access to Data held in the EXCEL Registry

- 2.2.1 Access to EXCEL Registry data requires approval from the EXCEL management committee.
- 2.2.2 Requests for data access must be submitted to either the EXCEL Chief Principal Investigator (CPI) or EXCEL Project Manager (PM) via the Qualtrics survey platform (https://monash.az1.qualtrics.com/jfe/form/SV_aXeY6DT84z4H3n0). The Qualtrics application portal includes completion of: a) the EXCEL Data Request Form, and, if there is an intention to publish or present any data analysis, b) an EXCEL Data Acknowledgement and Authorship Form.
- In brief:
- a. The EXCEL Data Request Form requires the following information:
 - i. A clear outline of the purpose for requesting EXCEL data,
 - ii. List of the variables requested from the EXCEL dataset
 - iii. Submission of a study protocol and ethics approval (data requests meant for publication and classified as low risk may submit the protocol to their local Ethics Committee for approval; high risk data requests need to be submitted to one of the **Registered and Certified Ethics Committees** for approval (check 'List of Human Research Ethics Committees (HREC) registered with NHMRC' - <https://www.nhmrc.gov.au/research-policy/ethics/human-research-ethics-committees/>). Please refer to **APPENDIX C** for a full list of registered and certified HRECs within Australia.
 - iv. Identification of how data and analyses will be stored upon receiving and at completion of the intended purpose.
 - b. For the EXCEL Data Acknowledgements and Authorship Form see "Specific Guidelines for Acknowledgements and Authorship"
- 2.2.3 As a general rule, requests for data will take approximately 2 weeks from the time of submission and the EXCEL data committee will not provide approval for the release of data that requests more than 50% of the variables within EXCEL database. In order to ensure data privacy and uphold the integrity of the dataset, if more than 50% of the data points is requested, a brief justification for the inclusion of each data point will also need to be provided. Requests that nominate an intention to publish or present data may take up to 4 weeks from the time of application submission (See "Guidelines for Publications, Presentations and Media using EXCEL Data").
- 2.2.4 Where a request for data for publication purposes matches the objective of a previously approved request, where appropriate, an EXCEL management committee member will attempt to connect these research groups with one another. Priority will be given to the original request.
- 2.2.5 Any data in which individuals or institutions may be identifiable will only be accessible to the requestee if a suitable agreement has been made with the EXCEL management committee.
- 2.2.6 Contact details of participating institutions, that is, information already in the public domain, are not subject to rules outlined in this document and can be provided without restriction.
- 2.2.7 The provision of data may include a fee-for-service based on cost-recovery (see Section 2.9 "Guidelines for Cost Recovery").
- 2.2.8 Data access for governmental institutions and organisations: EXCEL data is especially important for state and federal government organisations looking to ascertain quality control, incidence rates and associated disease and financial burden upon hospital systems.

As stated in the EXCEL Protocol, organisations that are funded, run and/or held accountable to local, state or national government and that request data will be prioritised due to the associated level of importance for timely providing of relevant data. These requests will always be reviewed directly by the EXCEL CPI and MC and approved in line with the EXCEL Registry Data Access Policy. Data provided to these governmental organisations will only be in the form of aggregate de-identified reports. No individual patient level data will be supplied unless an ethical approval is provided to the EXCEL management committee for review.

2.3 Data Request Risk Identification

- 2.3.1 All data requests will undergo initial screening for level of risk in line with the 'EXCEL Registry Data Request Risk Matrix', **provided in APPENDIX A**.
- 2.3.2 Risk identification will take into account the nature, sensitivity, and identifiability of the data request, including whether the data is aggregated, de-identified, or contains potentially re-identifiable information.
- 2.3.3 Consideration will be given to the intended purpose of the data use, including whether the request supports novel academic research, quality improvement, commercial use, or other activity.
- 2.3.4 Each request will be reviewed for potential risks relating to:
 - a. Breach of participant privacy and/or confidentiality
 - b. Misuse or misrepresentation of the data
 - c. Potential for reputational harm to the Registry or its participating institutions
 - d. Legal, regulatory, or contractual non-compliance
 - e. Conflict of interest, particular in relation to industry sponsored projects
- 2.3.5 Data requests will be assessed for risk upon submission (**refer to APPENDIX A**) which will necessitate further review via one of the following mechanisms.
 - a. **Low risk** data requests will require review by the EXCEL CPI and/or Data Committee.
 - b. **High risk** data requests will ALWAYS be presented to the EXCEL MC before progression to approval and data release. This is to provide a period where concerns can be raised and the data request, or project protocol, can be amended as needed.
- 2.3.6 Risk assessments will be logged and stored alongside the initial request in order to provide clear review and auditing trails.

2.4 Approved Access to Data in the EXCEL Registry

- 2.4.1 Once a data request has been approved, the EXCEL PM will transfer data via a secure portal as arranged through the ANZIC-RC.
- 2.4.2 Data obtained through an approved data request must be stored and managed in a secure environment approved by Monash/ANZIC-RC (such as SeRP), and cannot be released to other parties.
- 2.4.3 EXCEL data must not be used for any other purpose than that stated in the original data request. Any change to original submission will require a subsequent new formal data request and is not guaranteed approval.
- 2.4.4 The nominated lead researcher on any formal data request is responsible for compliance with the Data Access Policy as well as the security of supplied data and any subsequent analyses.

2.4.5 The lead researcher must notify the EXCEL management committee of any potential (or actual) risks to individuals, institutions or the ANZIC-RC that might result from the provision of data.

2.5 EXCEL Management Data Access

2.5.1 Select EXCEL management committee members and ANZIC-RC support team members who report directly to the EXCEL management committee are the only persons with direct access to EXCEL data.

2.5.2 EXCEL management committee members with direct access must not use EXCEL data for any purpose unless a formal data request has been granted.

2.6 Reports Produced by EXCEL and ANZIC-RC

2.6.1 The EXCEL management committee and ANZIC-RC support team reserves the right to control and access all reports produced using EXCEL Registry data.

2.6.2 Standard reports are regularly generated and provided to participating institutions in the EXCEL Registry. Such reports are confidential and must only identify the intended recipient, with any comparative data de-identified. Reports are only available to the individual or institution that is identified, unless permission has been granted by the EXCEL management committee.

2.6.3 Standard reports are generated with a citation that must be used if referencing the EXCEL registry in publications, presentations or publicity (including social media).

2.6.4 Supplementary reports such as those comparing data collected across jurisdictions, or data from specific sites with one another, will be generated on occasion. Institutions identified within these reports must be consulted and provide approval in writing prior to development. Supplementary reports are confidential and only available to the institutions identified within the report, unless permission has been granted by the EXCEL management committee.

2.6.5 Information generated in supplementary reports must not be used for publications, presentations or publicity, including social media.

2.7 Guidelines for Cost Recovery

2.7.1 All fees are charged at the discretion of the EXCEL CPI. This may depend on:

- a. The amount and complexity of data requested.
- b. Whether statistical support is required.

2.7.2 Where fees are charged, costs are based on the resources and time required to process requests.

2.7.3 The EXCEL PM will provide an estimate of incurred costs via email.

2.7.4 Invoices should be paid in full prior to any data being released.

3.0 Process for data requests for publication

For a quick guide relating to the overall process of data request and review for publication, please see **APPENDIX B**.

3.1 Guidelines for Publications, Presentations and Media Release of EXCEL Data

3.1.1 Individuals and institutions must submit any potential publications, presentations and

publicity to the EXCEL management committee for review prior to submission to a peer reviewed journal, scientific conference, media release or equivalent. The purpose of this review is to:

- a. Certify that the data provided has been understood and interpreted accurately.
- b. Ensure that there is acknowledgement of the use of the EXCEL Registry in the study or project, as well as individuals and/or institutions involved.
- c. Ensure that the EXCEL management committee is satisfied that the data request and subsequently generated publication do not exhibit a higher than initially assessed risk as presented with the 'EXCEL Data Request Risk Matrix'.
- d. Ensure that **ALL** members of the EXCEL management committee support the scientific validity of research and the conclusions made.
 - i. In circumstances where MC consensus cannot be reached, the requestee will be given an opportunity to amend the publication/presentation/media release for further review. **If consensus is still not reached (if not approved by at least 80% of the EXCEL MC members), support for use of the data request will be withdrawn by the EXCEL MC, and any associated publication/ presentation/ media release will be unable to proceed with EXCEL data.** The requestee will be informed of this decision in writing, along with the reasons for the withdrawal of support. If applicable, they may explore alternative avenues for publication that do not involve EXCEL data or submit a revised request in the future that aligns with the committee's feedback.
- e. Certify that any potential conflicts of interest have been disclosed.

3.2 Process for Publications and Presentations, including Scientific Meetings and Media

- 3.2.1 All material must be submitted via email or Qualtrics survey to either the EXCEL PM or EXCEL CPI. Submissions will be forwarded to select members of the EXCEL management committee (i.e. the EXCEL data committee) who will be responsible for reviewing material.
- 3.2.2 In the case that rapid approval is required (e.g. approval to include EXCEL data in an interview), where possible, contact the EXCEL CPI directly. The EXCEL CPI will either nominate themselves or contact an EXCEL data committee representative to review the material on behalf of the EXCEL management committee.
- 3.2.3 New requests for data which are intended for publication will be reviewed by the EXCEL data committee alongside all previous requests in order to ensure that there is no substantial overlap. If a substantial overlap is identified, the requesting investigator will be contacted and provided with this information. Final discretion relating to release of data within these circumstances is solely held by the EXCEL CPI and EXCEL MC.
- 3.2.4 Requestees will be notified in writing of the outcome of reviews by the EXCEL CPI or EXCEL PM.
- 3.2.5 In situations where the EXCEL management committee does not support the material intended for publication or presentation, for example, the scientific conclusions drawn, revision of the material will be required. Any material that has not received approval from the EXCEL management committee, does not have the support of the EXCEL management committee and cannot be submitted for the intended purpose.
- 3.2.6 For any accepted publication, citation details should be forwarded via email to the EXCEL PM or EXCEL CPI.

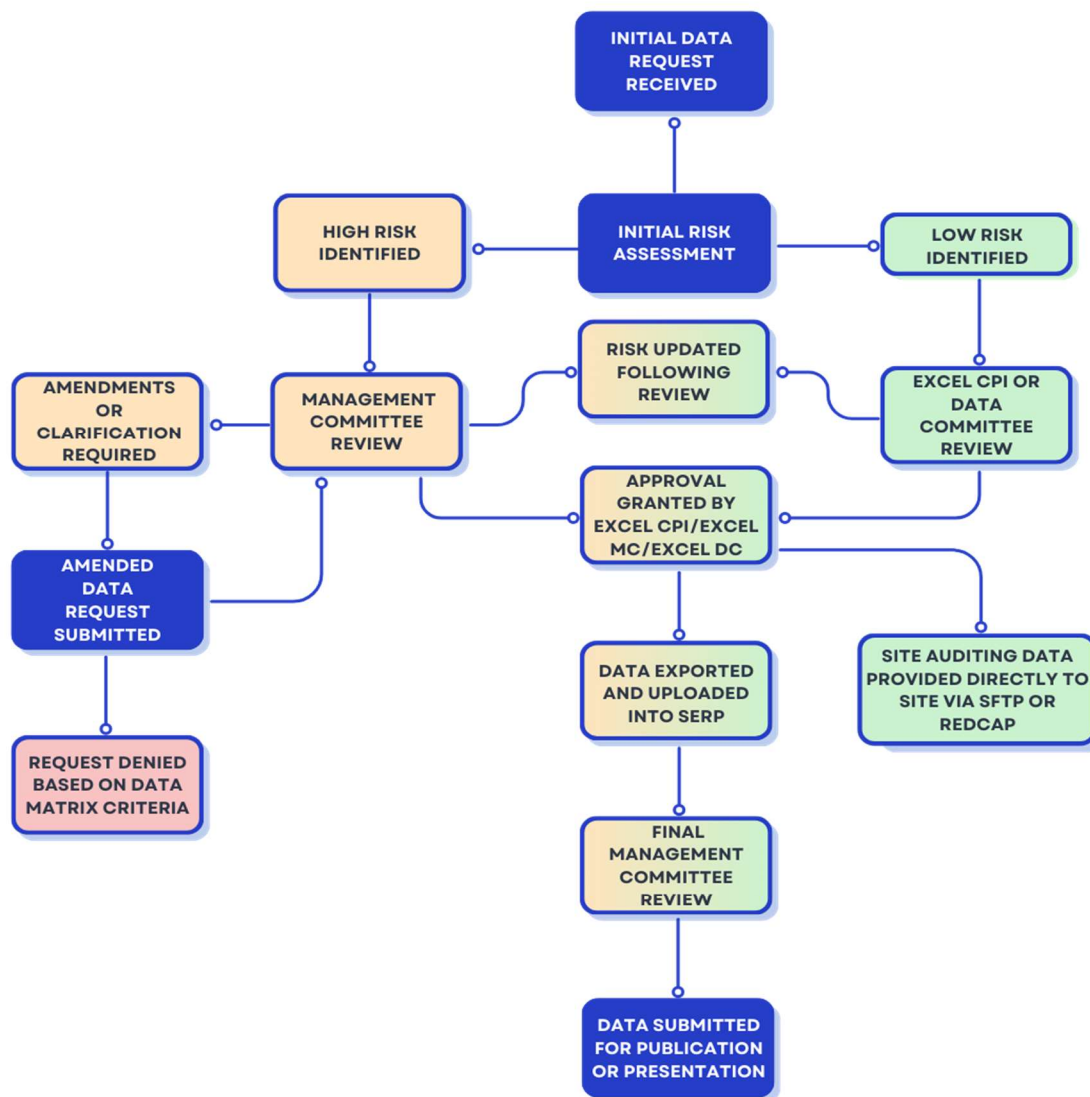
3.3 Post Approval - Publication Data Terms and Conditions

- 3.3.1 Only **ONE** published manuscript per data request is allowed.
- 3.3.2 Investigators are afforded **12-months of exclusive access** to the data which pertains to their specific proposal.
- 3.3.3 Data provided by EXCEL must **ONLY** be used for the purpose as outlined within the investigators data request. Any change to the objectives for use of the data must be preceded by a subsequent data request that will need review and approval from the EXCEL data committee. This is essential to limit any duplication of efforts by investigators.
- 3.3.4 In cases where progress to publication may be delayed, the EXCEL CPI or PM will contact the investigator responsible in order to source an updated timeline for completion. An extension of up to six months may be granted. **If no manuscript is submitted within that period, the investigator will lose exclusivity rights to the data.**
- 3.3.5 Furthermore, in rare cases where progress is significantly delayed, the EXCEL CPI reserves the right to inform the appropriate investigators that the data may no longer be used for the previously approved request. This is to ensure that delayed publication does not prevent the release of data within subsequent data requests from other investigators.
- 3.4 **Specific Guidelines for Acknowledgements and Authorship**
 - 3.4.1 Publications must include a statement of approval from an associated Human Research Ethics Committee.
 - 3.4.2 **ALL** requests for data with an intention to publish must submit a 'Data Acknowledgement and Authorship Form' along with a completed data request form. The Acknowledgement and Authorship form can be found at <https://www.monash.edu/medicine/sphpm/excel/research/excel-registry-data>.
 - 3.4.3 Publications, presentations and media releases with identifying information, such as individuals or institutions in research findings, must comply with the Data Access Policy.
 - 3.4.4 The EXCEL registry, EXCEL research funders and research participants should be acknowledged in all publications and presentations, as well as media (where possible). Such acknowledgements should include "The EXCEL Study Investigators", "EXCEL research funders" and "EXCEL research participants". Where appropriate (e.g. publications), a list of EXCEL management committee members, participating institutions, site principal investigators, and research coordinators should also be included. A list can be obtained from the EXCEL PM.
 - 3.4.5 For publications, at least one member of the EXCEL management committee must be included as an author on any publication using EXCEL data, to ensure accurate interpretation. This should be negotiated at the time of the formal data request.

APPENDIX A – EXCEL Registry Data Request Risk Matrix

Risk Level	Description	Examples/Criteria	Typical Review/Mitigation	Risk level escalation triggers
Low	Minimal to some risk to participant privacy, confidentiality, or Registry reputation. Data is fully aggregated or de-identified. Request aligns clearly with Registry objectives.	<ul style="list-style-type: none"> - Aggregate descriptive statistics (e.g. number of patients supported with VV ECMO per year) - Requests for internal quality improvement, auditing and benchmarking - De-identified patient level data (age, diagnosis, outcome) for academic analysis and research (e.g., ECMO outcomes by specific diagnosis group) - Long term follow-up data relating to a single centre for the purpose of internal clinical review 	<ul style="list-style-type: none"> - Review by EXCEL Chief Principal Investigator (CPI) and/or EXCEL Data Committee - Completion of Qualtrics data request portal application - Submission of project specific ethics approval certificate (where applicable) - 	<p>Escalated to HIGH risk if:</p> <ul style="list-style-type: none"> - Request for individual patient level data - Request for data from specific EXCEL centres - Request seeks unmasked centre level comparisons - Request for benchmarking of individual hospitals - Determined by the EXCEL CPI, EXCEL Data Committee or EXCEL Management Committee
High	Significant risk to participant confidentiality, reputational harm to Registry or centres, or potential for misuse in commercial/competitive contexts. Data may involve sensitive outcomes, rare subgroups, or identifiable institutional comparisons.	<ul style="list-style-type: none"> - Centre or jurisdictional-level comparative data intended for publication (e.g., comparison of specific EXCEL centres) - Detailed longitudinal patient-level data with rare diagnosis or disease with increased risk of potential confidentiality issues (e.g., paediatric ECMO cases) - Data requests from commercial or industry sponsors - Requests to link data with external datasets 	<ul style="list-style-type: none"> - Review by EXCEL CPI - FULL review by the EXCEL Management Committee - Submission of project specific ethics approval certificate - Completion of standard data request form or Qualtrics data portal application - Writing group must contain at least one representative from each state or jurisdiction relating to the data request - May necessitate execution of a data usage agreement depending on requirements - EXCEL MC must ALL agree to progress data request to submission for publication 	<p>Request rejected if:</p> <ul style="list-style-type: none"> - Request includes explicitly identifiable patient data - Request for data outside of the purpose or scope of the supplied ethics approval - Request and project lacks scientific validity - Determined by the EXCEL CPI, EXCEL Data Committee or EXCEL Management Committee

APPENDIX B – Data Request Flowchart



Abbreviation Key

CPI – Chief Principal Investigator
DC – Data Committee
MC – Management Committee
SERP – Secure eResearch Platform

APPENDIX C - List of Human Research Ethics Committees Registered and Certified with NHMRC

What does registered mean?

For an HREC to be registered with NHMRC, the institution(s) that established the HREC notifies NHMRC of the HREC's existence and provides a signed declaration that the HREC will comply with the National Statement on Ethical Conduct in Human Research (the National Statement) and any revisions made to it.

What is a Certified Institution?

To be identified as a Certified Institution, the institution's ethical review process has undergone an independent assessment conducted by a certifying body (currently NHMRC). Certification begins with the institution carrying out a self-assessment of its ethical review processes and supporting structures against agreed national criteria. This is followed by a desktop assessment by the certifying body before an on-site visit to verify institutional claims and practices.

Certification is dependent upon a satisfactory demonstration of institutional conformance with specified criteria which, in part, are based on the National Statement – including that the HREC is appropriately constituted, and that its institution's policies, processes and procedures meet an agreed national set of criteria.

Name	Organisation	URL Address	Status
Australian Capital Territory			
ACT Health Human Research Ethics Committee	ACT Health	https://www.act.gov.au/health/conducting-health-research/ethics-and-governance	Registered and Certified
New South Wales			
Hunter New England Human Research Ethics Committee	Hunter New England Local Health District	https://www.nsw.gov.au/departments-and-agencies/hnelhd/our-research/research-ethics-governance	Registered and Certified
Nepean Blue Mountains Local Health District	Nepean Blue Mountains Local Health District	https://www.nsw.gov.au/departments-and-agencies/nbmlhd	Registered and Certified
Northern Sydney Local Health District Human Research Ethics Committee	Northern Sydney Local Health District	https://www.nslhd.health.nsw.gov.au/Research/Pages/Pre-approval.aspx	Registered and Certified
NSW Population and Health Service Research Ethics Committee	Cancer Institute NSW	https://www.cancer.nsw.gov.au/research-and-data/nsw-population-health-services-research-ethics-com	Registered and Certified
South Eastern Sydney Local Health District HREC	South Eastern Sydney Local Health District	https://www.seslhd.health.nsw.gov.au/services-clinics/directory/research-home/ethics	Registered and Certified

South Western Sydney Local Health District Human Research Ethics Committee	South Western Sydney Local Health District	https://www.swslhd.health.nsw.gov.au/ethics/	Registered and Certified
St Vincent's Hospital Human Research Ethics Committee	St Vincent's Hospital Sydney Limited	svhs.org.au/home/research-education/research-office	Registered and Certified
Sydney Children's Hospitals Network Human Research Ethics Committee	The Sydney Children's Hospitals Network	https://kr.schn.health.nsw.gov.au/research-support/ethics-and-governance/governance	Registered and Certified
Sydney Local Health District Ethics Review Committee (RPAH Zone)	Sydney Local Health District	https://www.slhd.nsw.gov.au/rpa/research/	Registered and Certified
Sydney Local Health District HREC – Concord Repatriation General Hospital	Sydney Local Health District (Concord Repatriation General Hospital)	https://www.slhd.nsw.gov.au/concord/ethics/	Registered and Certified
The University of New South Wales Committee A	The University of New South Wales	https://www.unsw.edu.au/research/facilities-and-infrastructure/recs	Registered and Certified
The University of New South Wales Committee B	The University of New South Wales	https://www.unsw.edu.au/research/facilities-and-infrastructure/recs	Registered and Certified
The University of New South Wales Committee C	The University of New South Wales	https://www.unsw.edu.au/research/facilities-and-infrastructure/recs	Registered and Certified
Western Sydney Local Health District Human Research Ethics Committee	Western Sydney Local Health District	https://www.wslhd.health.nsw.gov.au/Education-Portal/Research/ethics-governance	Registered and Certified
Northern Territory			
Human Research Ethics Committee of the Northern Territory Department of Health and Menzies School of Health Research	Northern Territory Government – Department of Health	https://www.menzies.edu.au/page/About_Us/Menzies_committees/Human_research_ethics_committee/	Registered and Certified
Queensland			
Children's Health Queensland Hospital and Health Service Human Research Ethics Committee	Children's Health Queensland Hospital and Health Service	childrens.health.qld.gov.au/research/human-research-ethics-committee	Registered and Certified

Darling Downs Hospital and Health Service Human Research Ethics Committee	Darling Downs Hospital and Health Service	https://www.health.qld.gov.au/darlingdowns/html/ddhhs-hrec.asp	Registered and Certified
Gold Coast Hospital and Health Service Human Research Ethics Committee	The Gold Coast Hospital and Health Service	https://www.goldcoast.health.qld.gov.au/research/researchers/ethics-and-governance	Registered and Certified
Mater Misericordiae Ltd Human Research Ethics Committee	Mater Misericordiae Ltd	https://www.materresearch.org.au/researchers/for-researchers/ethics-and-governance	Registered and Certified
Metro North Health Human Research Ethics Committee	Metro North Health	https://metronorth.health.qld.gov.au/research/ethics-and-governance/human-research-ethics-committee	Registered and Certified
Metro South Human Research Ethics Committee	Metro South Hospital and Health Service	https://www.metrosouth.health.qld.gov.au/research/research-ethics-and-governance/human-research-ethics-committee	Registered and Certified
Queensland Institute of Medical Research Berghofer Human Research Ethics Committee	QIMR Berghofer Medical Research Institute	https://www.qimrb.edu.au/about/research-governance/human-research-ethics-committee	Registered and Certified
Townsville Hospital and Health Service Human Research Ethics Committee	Townsville Hospital and Health Service	https://www.townsville.health.qld.gov.au/research/for-researchers/research-ethics-and-governance/townsville-hhs-hrec-information/	Registered and Certified
South Australia			
Bellberry Human Research Ethics Committee A to L	Bellberry Limited	https://bellberry.com.au/	Registered and Certified
Central Adelaide Local Health Network HREC	Central Adelaide Local Health Network Incorporated	rah.sa.gov.au/research/for-researchers/central-adelaide-local-health-network-human-research-ethics-committee	Registered and Certified
SA Department for Health and Wellbeing Human Research Ethics Committee	SA Department for Health and Wellbeing	https://www.sahealth.sa.gov.au/wps/wcm/connect/Public%20Content/SA%20Health%20Internet/About%20us/Our%20Local%20Health%20Networks/Southern%20Adelaide%20Local%20Health%20Network/Research/SALHN%20research	Registered and Certified
Southern Adelaide Clinical Human Research Ethics Committee	Southern Adelaide Local Health Network Inc. through the Flinders Medical Centre	https://www.sahealth.sa.gov.au/wps/wcm/connect/Public+Content/SA+Health+Internet/About+us/Our+Local+Health+Networks/Southern+Adelaide+Local+Health+Network/Research/For+Researchers/Southern+Adelaide+Clinical+Human+Research+Ethics+Committee	Registered and Certified

Women's and Children's Health Network Human Research Ethics Committee	Women's and Children's Health Network	https://www.wchn.sa.gov.au/research/research-ethics-and-governance-office	Registered and Certified
Victoria			
Alfred Hospital Ethics Committee	Alfred Health	https://www.alfredhealth.org.au/research/ethics-research-governance	Registered and Certified
Austin Health Human Research Ethics Committee	Austin Health	https://www.austin.org.au/research-ethics-and-governance/	Registered and Certified
Barwon Health HREC	Barwon Health	https://research.barwonhealth.org.au/for-researchers/	Registered and Certified
Eastern Health Human Research Ethics Committee	Eastern Health	https://www.easternhealth.org.au/institute/research-enquiries/	Registered and Certified
Monash Health Human Research Ethics Committee A and B	Monash Health	https://monashhealth.org/research/	Registered and Certified
Peter MacCallum Cancer Centre Human Research Ethics Committee	Peter MacCallum Cancer Centre	https://www.petermac.org/research/research-support-services/ethics-and-governance	Registered and Certified
St Vincent's Hospital Melbourne Human Research Ethics Committee	St Vincent's Hospital Melbourne	https://www.svhm.org.au/research/researchers/human-research-ethics-committee	Registered and Certified
The Royal Children's Hospital Human Research Ethics Committee	The Royal Children's Hospital Melbourne	https://www.rch.org.au/ethics/	Registered and Certified
The Royal Melbourne Hospital Human Research Ethics Committee	Melbourne Health	https://www.thermh.org.au/research/office-for-research/ethics	Registered and Certified
Western Australia			
Child and Adolescent Health Service Human Research Ethics Committee	The Child and Adolescent Health Service	https://cahs.health.wa.gov.au/Research/For-researchers/Ethics-and-governance/Ethics	Registered and Certified
Sir Charles Gairdner and Osborne Park Health Care Group Human	Sir Charles Gairdner and Osborne Park Health Care Group	https://www.scgh.health.wa.gov.au/Research/Department-of-Research/My-Project/HREC	Registered and Certified

Research Ethics Committee			
South Metropolitan Health Service Human Research Ethics Committee	South Metropolitan Health Service	https://smhs.health.wa.gov.au/Our-research/For-researchers	Registered and Certified
St John of God Health Care Human Research Ethics Committee	St John of God Health Care	https://www.sjog.org.au/about-us/research/human-research-ethics-committee	Registered and Certified