

# Monash University

## Student Services and Amenities Fee (SSAF)

### 2025 Allocation Report



## Contents

<b>Introduction</b> .....	<b>2</b>
<b>SSAF Consultation and Achievements</b> .....	<b>3</b>
2025 SSAF-funded achievements and highlights.....	5
<b>SSAF Revenue Summary</b> .....	<b>9</b>
SSAF Charge Summary.....	9
<b>SSAF Allocation Summary</b> .....	<b>11</b>
Key areas of expenditure 2025.....	11
Organisations, bodies or third-party providers that received SSAF funding in 2025.....	13
1. Allocation of SSAF revenue – non-student-led organisations.....	13
2. Allocation of SSAF revenue to student led organisations - Evidence of meeting requirement of 40 per cent.....	14
3. Attestation that student led organisations in receipt of a minimum of 40 per cent of SSAF revenue are meeting governance requirements.....	15
Declaration by Person of Authority.....	16

# Introduction

The *Higher Education Support (Student Services, Amenities, Representation and Advocacy) Guidelines 2022* (SSARA Guidelines) require higher education providers to provide a publicly available report on student services and amenities fee (SSAF) allocations and actual expenditure for the year as part of their annual reporting and in the form approved by the Minister. This *SSAF Allocation Report* is the form approved by the Minister.

The information provided in this *SSAF Allocation Report* does **not** require auditing by a financial accountant. The SSAF expenditure reporting is a separate process and remains unchanged, more information can be found in the [Financial Statements Guidelines](#) for Table A and B providers, and in the [Financial Viability Instructions: Applicants and Providers of FEE-HELP \(FVI\)](#) for all other approved providers.

# SSAF Consultation and Achievements

Monash University dedicates Student Services and Amenities Funding (SSAF) to improvements in facilities, student engagement and support activities, and co-curricular student amenities across all of the University's Australian campuses.



*Image: MSA Pantry upgrade - A refresh of the servery in the Campus Centre to make it suitable for the growing food-security programmes.*



*Image: Monash Graduate Association organised off-campus trips to Phillip Island with members*



*Image: The Monash Student Communities Beach Day at Carrum Beach provides commencing students with the opportunity to build friendships, experience a local Melbourne beach, and learn important water safety messages.*

In 2025, the University continued its SSAF allocation approach based on the following principles:

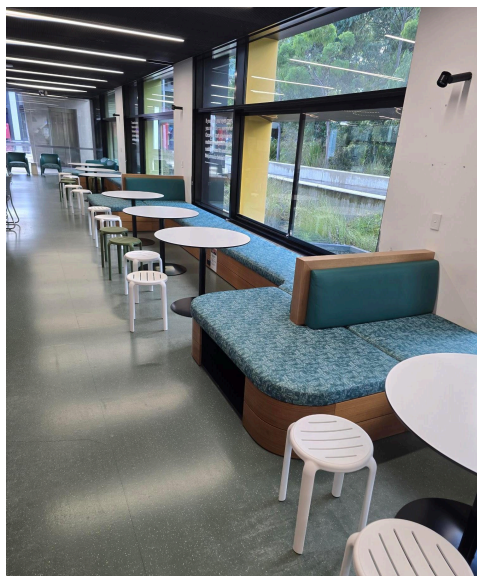
1. where possible, the fees paid by students should be used on the home campus of those students;
2. where possible, the fees paid by students should be expended in the years in which they are studying such that the benefits to the student are accessible to them;
3. funding should support both operational programs and capital improvements to facilities that support non-academic student activities;
4. SSAF-funded operational programs that support student life can be delivered successfully by recognised student organisations and by University business units;

5. funding should align with the University's Equity, Diversity, and Inclusion framework;
6. students should have a direct voice in how the funding is allocated; and
7. unspent funding is carried forward and added to the following years SSAF funding pool.

In 2025, Monash separated SSAF funding into three pools from which further allocation decisions are made. Those pools are as follows:

- 40% of total SSAF funding is provided directly to Monash Student Organisations (MSOs) based on actual fees paid on a campus and cohort basis. Each MSO makes decisions on how to allocate the SSAF Grant to support student life and support activities as part of their budgeting process. The rules around the use of these funds are contained in Funding Agreements that require each MSO (of which Monash University has five) to spend SSAF in strict accordance with section 19-38(4) of the Higher Education Support Act 2003. In 2025, this pool totalled \$6,117,968.
- 20% of total funding to student-identified and -focussed capital projects (up to \$300,000 in value) with the funding available based on an actual campus fee total collected basis. This funding stream is designed to support genuine partnership between students and the University, enabling students to directly influence investments in facilities, spaces and infrastructure that enhance campus life and means that student representatives are involved in the approval process at each step. In 2025, this pool totalled \$2,961,424.
- 40% of total funding for Monash University managed co-curricular programs, events and capital projects across all domestic campuses. SSAF revenues and expenditures are quarantined in a dedicated cost centre to ensure they are clearly identifiable and separated from other activities funded by non SSAF sources. In 2025, this pool totalled \$6,052,928.

Across all three pools, the use of SSAF funds is strictly limited to the allowable expenditure of SSAF set out in 19-38(4) of the Higher Education Support Act 2003. In addition to the SSAF grant, Monash University provided \$5,723,928 to the recognised student organisations in 2025 to further support student engagement activities. The use of this additional funding was also covered by signed funding agreements and the expenditures were restricted to activities that would qualify as allowable expenditure from a SSAF legislation perspective.



*Image: Improvements made to the Science Learning Lounge space with the addition of new furniture which helps create a welcoming environment and encourages small group engagement.*



*Image: A new portable BBQ was purchased for us by the Monash Jewish Student Society (MONJSS). MONJSS can loan a gas bottle and Kosher BBQ cooking utensils to avoid cross contamination. This photo is from the club's first BBQ event.*

# 2025 SSAF-funded achievements and highlights

In 2025, SSAF funding made substantial contributions to student sport and recreation activities, clubs, health and wellbeing initiatives, employability support and amenities on campus.

Monash Student Organisations (MSOs) delivered a range of essential activities, services and facilities to students with their 2025 SSAF funding allocation. These activities were inclusive of, but not limited to, orientation activities, clubs and society events, welfare services, food and financial security measures, sporting and recreational activities and study skill development programs. Not surprisingly, measures to address food security featured heavily, with all MSOs embracing initiatives which saw the expansion of student food pantries, grocery giveaways, free lunch events and themed food activities (e.g. Easter hot cross bun & chocolate giveaways).

Overall, SSAF expenditure in 2025 aligned with strengthening student belonging and community connection through clubs, societies and engagement activities; supporting student wellbeing through health, welfare and mental health initiatives; addressing cost-of-living pressures through food security; enhancing employability and career readiness; investing in sport and wellbeing; improving student amenities and campus spaces.



*Image: MPSU Easter Giveaways - Free hot cross buns and Easter chocolate giveaway event celebrating Easter within the Parkville community, featuring a spinning wheel (funded through SSAF capital) with exciting prizes.*



*Image: MONSHU Caulfield photobooth set up during Orientation week to encourage a sense of community and encourage student engagement.*



*Image: Monash Graduate Association volunteers held a grocery pop-up welfare event. The event was open to all grads needing some assistance with the high cost of living.*



*Image: New equipment (QLab, Mac & iPads) were purchased by the MSA's Student Theatre Group to enable the technical operation required for musical productions*

SSAF funding spent on University-managed co-curricular programs, events and capital projects across Australian campuses in 2025 included:

### Sport and fitness initiatives

- [Doug Ellis Swimming Pool](#) group change room and accessibility Service Desk (phase two)
- [Water Wise program](#) - free learn to swim classes from beginner to adult courses
- [Varsity sport](#) competitions grants for participating students
- Monash Sport [participation programs and events](#)
- Social sport and gym [membership discounts](#) for students
- Support of University-affiliated sports and faculty clubs



*Image: The Water Wise introduction to Swimming Program which includes beginner Adult Learn to Swim and the Water Women programs. The dedicated SSAF funding provides eligible current Monash students 100% funding to participate in the program to develop their introductory swimming skills.*

*Image: As part of the fitness centre offerings, there is a commitment to increasing the water safety and swimming ability of Monash University students, here we see Water Wise students practicing first aid alongside the pool.*



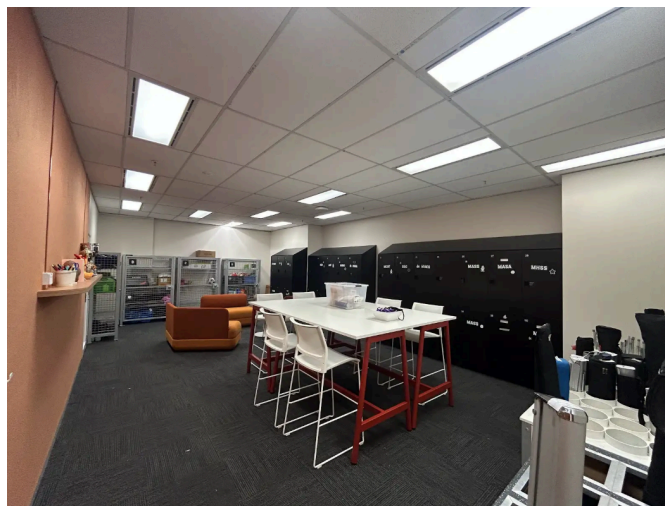
*Image:  
The Tan Track is a ~1000m running track that encompasses Monash Sport's soccer pitches and football oval. Over the last few years, the University has made a concerted effort to gradually upgrade the Tan Track from compacted sand to sealed rubber composite. In 2025, the design documentation to seal the final section of the track was completed such that construction can begin in 2026*

## Renovating and repurposing spaces

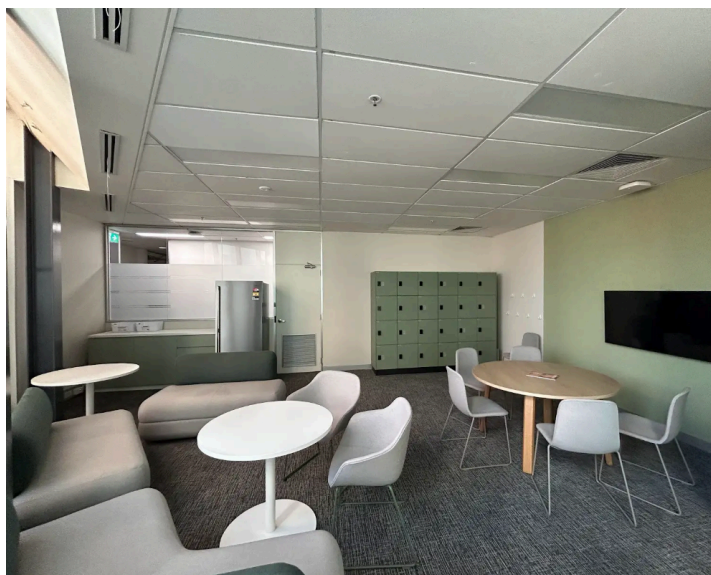
- University Health Services refurbishment
- Volunteer room at Caulfield campus
- Furniture upgrades in student common spaces
- Progression of the tan track surface sealing



*Image: Physiotherapy students get a new student zone at the Peninsula Campus where they can meet up between classes. The new student space has been fitted out with new furniture and installation of additional power outlets to support device charging*



*Image: The MONSU Caulfield Clubs Room has been updated to create an inviting atmosphere for students to gather and unwind during major events. The space has also been optimised to better meet the storage requirements of MONSU and their affiliate clubs. There are now pin-code lockers, cages for larger items, and a new work-space for students.*



*Image:*

*MONSU's volunteer programs have grown significantly of late, so to encourage their volunteers to remain engaged, MONSU sought SSAF funding to establish a new dedicated space for their volunteers. This space includes a comfortable lounge area, lockers and a fridge for short-term storage, and a wall-mounted screen to conduct training.*

## Wellbeing, support and student engagement

- [Respect Adviser Network](#)
- Continuation and expansion of food security initiatives
- [Free Mental Health courses](#) for students, including Mental Health First Aid
- Fitness centre referral program for at-risk students
- Student engagement activities supporting [Respect at Monash](#) and inclusive communities' initiatives
- Support for social programs provided by our [Monash Student Communities](#) and [English Connect programs](#)



*Image: The Monash Student Communities advisors welcome new students at a lunch hosted on the Peninsula campus*



*Image: The Let's Chat program, run by English Connect, is a way for students to make friends, learn about Australia and practise their conversational English in a fun and interactive way.*



*Image: Across the 8 week Let's Chat program, students participate in activities to develop their conversational skills, knowledge of culture and slang and gain the confidence to build new friendships.*



*Image: Hot meal initiatives aimed at providing students with quick and accessible lunches (ranging from Pizzas, Rice Balls, Burritos, ..) to help combat the rising cost of living, while ensuring they receive the nutrition needed to support a full day of study*

## SSAF Revenue Summary

	2025 Allocation \$ <sup>1</sup>	2025 Actual \$
SSAF Revenue	\$14,645,600	\$15,132,320
SSAF revenue carried forward from 2024	\$0	\$0
<b>Total SSAF funds available for 2025</b>	<b>\$14,645,600</b>	<b>\$15,132,320</b>
SSAF revenue carried over into 2026	\$0	\$0

<sup>1</sup> Allocation refers to the SSAF funds expected to be received in the reported year (i.e., budgeted SSAF revenue).

## SSAF Charge Summary

The student services and amenities fee (SSAF) charged to students must not be above the maximum fee for a calendar year. The maximum SSAF is indexed annually as required by the *Higher Education Support Act 2003* (the Act). In **2025** the maximum SSAF was **\$365**.

Student Status	2025 SSAF charged \$ <sup>2</sup>	Number of students charged in 2025 <sup>3</sup>
Full-time <sup>1</sup> (> 0.75 EFTSL)	\$365	33,848
Part-time <sup>1</sup> (< 0.75 EFTSL)	\$273	10,136
	<b>Total:</b>	<b>43,984</b>

<sup>1</sup> Note: As per Part 2 of the *Higher Education Support (Administration) Guidelines 2022* (Administration Guidelines), students studying on a part-time basis must not be charged more than 75 per cent of the maximum SSAF that a higher education provider determines for students studying on a full-time basis. The term “part-time basis” means a study load of less than 75 per cent of the normal full-time student load for the period to which the fee relates. As per part 7 of the Administration Guidelines, the normal EFTSL value for a full-time student studying over a period of one year is 1.0.

<sup>2</sup> Note: As per Part 2 of the Administration Guidelines, a higher education provider may choose to determine a different SSAF for particular categories of persons, including a zero amount.

<sup>3</sup> Note: Students are categorised as full-time or part-time students based on the total EFTSL value of the units of study they undertook in [insert reported year]. For example, a student undertook a full-time study load in Semester 1 which was equal to 0.5 EFTSL and undertook a part-time study load in Semester 2 which was equal to 0.375 EFTSL. This student would be categorised as a full-time student in [insert reported year] as the total EFTSL they undertook in [insert reported year] was equal to 0.875.

Student Status	2025 SSAF charged \$ <sup>2</sup>	Approx. number of SSAF students remote learning 2025 <sup>4</sup>
Remote learning/Online only	Full time (>= 0.75 EFTSL): \$365 Part time (< 0.75 EFTSL): \$273	398

<sup>4</sup> Note: The Department of Education understands that not all higher education providers capture mode of study in their information systems and many students undertake a mixed mode of study such as face-to-face and remote learning. The data provided above is for students who undertook remote learning for 100% of their units of study.

# SSAF Allocation Summary

## Key areas of expenditure 2025

Subsection 19-38(4) of the *Higher Education Support Act 2003* (the Act) provides a list of 19 allowable expenditure items which higher education providers may allocate and spend SSAF revenue on.

Please note, under subsection 19-38 of the Act, SSAF revenue must not be spent to support a political party or the election of a person as a member of the legislature of the Commonwealth, State or a Territory, or a local government body.

Key Area (reporting against these are mandatory)	2025 Total Allocation \$	2025 Total Actual Spend \$	Are services available online?	Estimated No. of students accessing services
1. Health Services	\$1,455,178	\$1,455,178	Yes	54,625
2. Clubs or other associations	\$829,466	\$821,938	Yes	47,200
a. Sporting	\$264,276	\$264,276	No	3,342
b. Internal student politics	\$245,682	\$245,682	No	9,064
c. Gender, sexuality, ethnicity, race, or nationality-based	\$183,854	\$214,581	Yes	17,500
d. Areas-of-study related e.g. law	\$41,913	\$105,424	Yes	22,961
e. Other activities e.g. music, debate, chess	\$860,455	\$904,108	Yes	30,500
f. Other	\$117,757	\$128,059	Yes	5,000
3. Accommodation	\$0	\$0	N/A	N/A
4. Employment/career services	\$334,210	\$336,752	Yes	2,142
5. Legal aid	\$262,692	\$262,692	Yes	2,923
6. Support for financial affairs	\$570,080	\$570,806	Yes	7,560
7. Other student amenities	\$2,584,436	\$2,584,436	No	89,257

8. Providing food or drink to students on a campus of the provider	\$880,936	\$977,442	No	89,257
9. Supporting students' sporting or other recreational activities	\$2,240,868	\$2,277,356	No	89,257
10. Supporting the administration of a club most of whose members are students	\$188,221	\$188,221	Yes	89,257
11. Promoting students' health or welfare	\$882,054	\$928,637	Yes	89,257
12. Providing libraries and reading rooms, other than those provided for academic purposes for students	\$192,420	\$201,740	No	6,500
13. Supporting an artistic activity by students	\$343,109	\$284,052	Yes	5,000
14. Supporting the production and dissemination to students of media whose content is provided by students	\$208,807	\$227,026	Yes	27,500
15. Helping students develop skills for study, by means other than undertaking courses of study in which they are enrolled	\$718,945	\$719,092	Yes	89,257
16. Advising on matters arising under the provider's rules, however described	\$519,972	\$666,125	Yes	5,100
17. Advocating students' interests in matters arising under the provider's rules, however described	\$205,005	\$181,584	Yes	21,000
18. Giving students information to help them in their orientation	\$300,888	\$309,102	Yes	89,257
19. Helping meet the specific needs of overseas students relating to their welfare, accommodation and employment	\$214,376	\$278,011	Yes	36,737
<b>Total</b>	<b>\$14,645,600</b>	<b>\$15,132,320</b>		

## Organisations, bodies or third-party providers that received SSAF funding in 2025

### 1. Allocation of SSAF revenue – non-student-led organisations

Organisation Name <sup>1</sup>	Australian Business Number (ABN)	Supported Key Area	Total SSAF Funding Received from provider \$	% of total SSAF revenue collected by the Provider
N/A	-	-	-	-
		<b>Total SSAF provided to non student-led organisations</b>	-	-

<sup>1</sup> Note: Only organisations, bodies or third-party providers who receive over \$1,000 in SSAF funding are expected to be disclosed.

2. Allocation of SSAF revenue to student led organisations - Evidence of meeting requirement of 40 per cent

Organisation Name <sup>2</sup>	Australian Business Number (ABN)	Supported Key Area	SSAF Funding Received from Provider \$	% of total revenue collected by the provider	If below 40 per cent, is there an agreed transition plan in place	Details of transition plan
Monash Student Association Clayton Inc.	20 147 061 074	Multiple Areas - student engagement & support programs	\$2,704,865.34 (includes a contribution for student-run programs for students enrolled in School of Rural Health courses)	17.87%	N/A	N/A
Monash Graduate Association Inc.	86 800 958 958	Multiple Areas - student engagement & support programs	\$2,207,159.40	14.59%	N/A	N/A
Monash Parkville Student Union Inc.	88 160 180 107	Multiple Areas - student engagement & support programs	\$160,712.13	1.06%	N/A	N/A
MONSU Caulfield Inc.	42 911 556 610	Multiple Areas - student engagement & support programs	\$806,416.80	5.33%	N/A	N/A
Monash University Student Union Peninsula Inc.	93 002 915 529	Multiple Areas - student engagement & support programs	\$238,467.92	1.58%	N/A	N/A
<b>Total SSAF provided to student-led organisations</b>			<b>\$6,117,621.59</b>	<b>40.43%*</b>		

<sup>2</sup> Note: Only organisations, bodies or third-party providers who receive over \$1,000 in SSAF funding are expected to be disclosed.

\* Note that these figures do **not** include SSAF contributions made to MSOs as part of the SSAF 20% student-identified capital projects pool.

As noted above, in addition to the 40% SSAF grant provided to MSOs, Monash provided a further \$5,723,928 to these student organisations in 2025 to further support student engagement activities. The use of this additional funding was covered by signed funding agreements and expenditure was restricted to activities that would qualify as allowable expenditure from a SSAF legislation perspective.

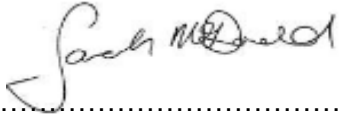
**3. Attestation that student led organisations in receipt of a minimum of 40 per cent of SSAF revenue are meeting governance requirements**

Organisation Name <sup>1</sup>	Majority student-led	Democratically elected leaders	Independence	Audited accounts	Corporate Governance policies and procedures established and adhered to	If replying no on any measure, is there an agreed transition plan in place?	Details of transition plan
Monash Student Association Clayton Inc.	Yes	Yes	Yes	Yes	Yes	N/A	N/A
Monash Graduate Association Inc.	Yes	Yes	Yes	Yes	Yes	N/A	N/A
Monash Parkville Student Union Inc.	Yes	Yes	Yes	Yes	Yes	N/A	N/A
MONSU Caulfield Inc.	Yes	Yes	Yes	Yes	Yes	N/A	N/A
Monash University Student Union Peninsula Inc.	Yes	Yes	Yes	Yes	Yes	N/A	N/A

## Declaration by Person of Authority

I, Professor Sarah McDonald, Deputy Vice-Chancellor (Student Experience) and Senior Vice-President of Monash University, declare that the information provided in this Student Services and Amenities Fee (SSAF) Allocation Report is to the best of my knowledge true, complete and correct.

I further attest that the information provided in this Report meets the requirements of the *Higher Education Support Act 2003* and the Higher Education Support (Student Services, Amenities, Representation and Advocacy) Guidelines 2022 and that, where transition arrangements have either been sought or approved, information is provided on this.



.....

Professor Sarah McDonald

Deputy Vice-Chancellor (Student Experience) and Senior Vice-President

16 June 2026