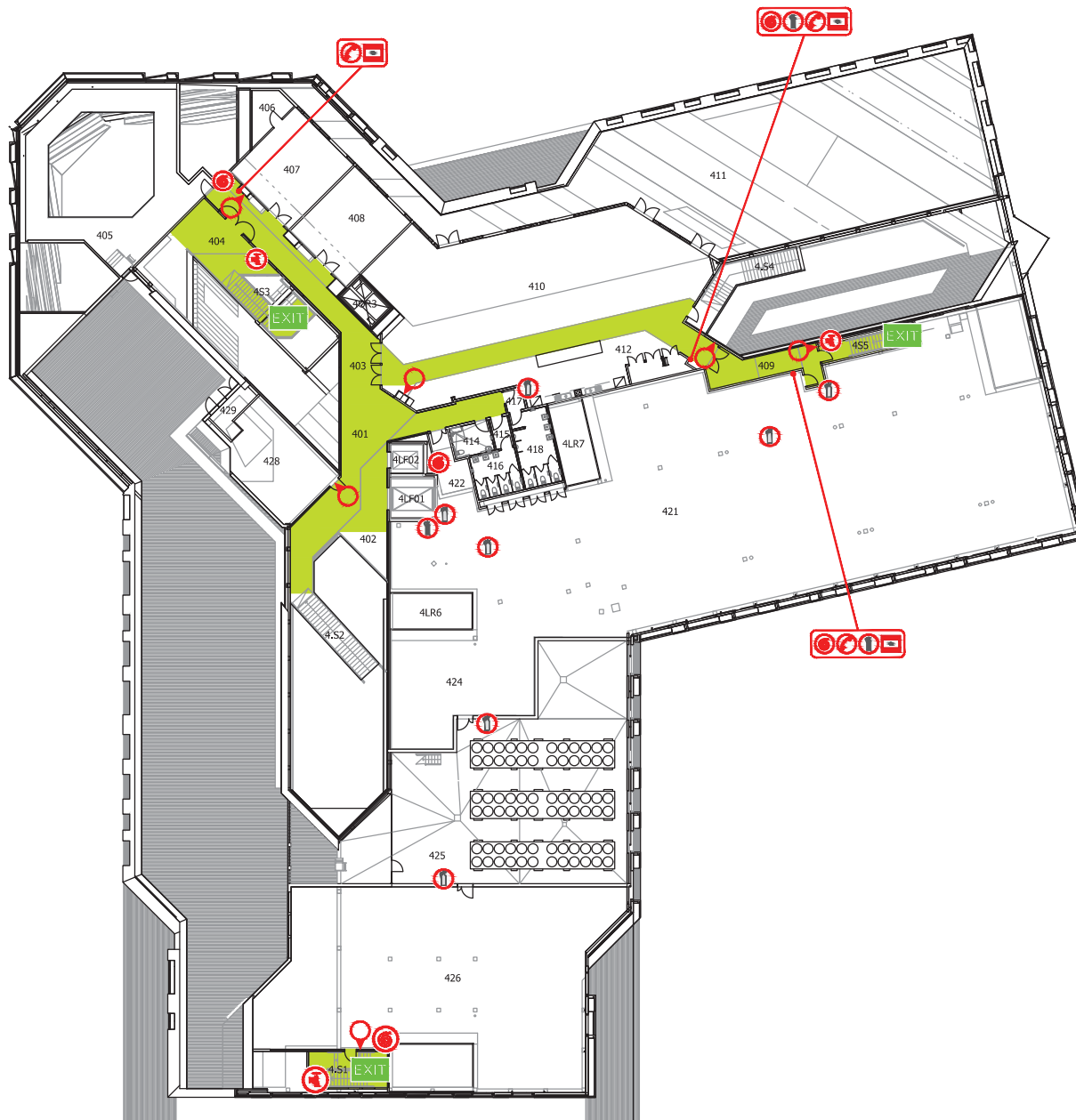



82 EVACUATION DIAGRAM

New Horizons Level 4



EMERGENCY PROCEDURES

FOR FIRE

- Activate a **Red** manual break glass alarm 

FOR ALL EMERGENCIES

- Call Security on  **ext 333**
- Or call  **99053333**
- Or use a **Red** emergency telephone 
- Assist anyone that needs help *if it is safe to do so*

EVACUATION

Be ready to leave the building:

- If danger threatens
- If instructed by staff, wardens or emergency services
- On hearing the alarms


When evacuating the building:

- Walk. Do not run. Do not use a lift
- Evacuate to the assembly area & stay there until the all clear is given by the authorised person

ALARMS

- **Beep-Beep** Prepare to evacuate, turn off equipment & listen for announcements over the PA system
- **Whoop - Whoop** Evacuate to assembly area

SYMBOL LEGEND

 Main exit pathway	 Manual call point	 Fire hydrant
 EXIT Emergency Exit	 Emergency call point	 Fire hose reel
 Emergency warning & intercom system	 Emergency phone	 Water Extinguisher
 Fire indicator panel	 AED Defibrillator	 Fire blanket

ASSEMBLY AREA

