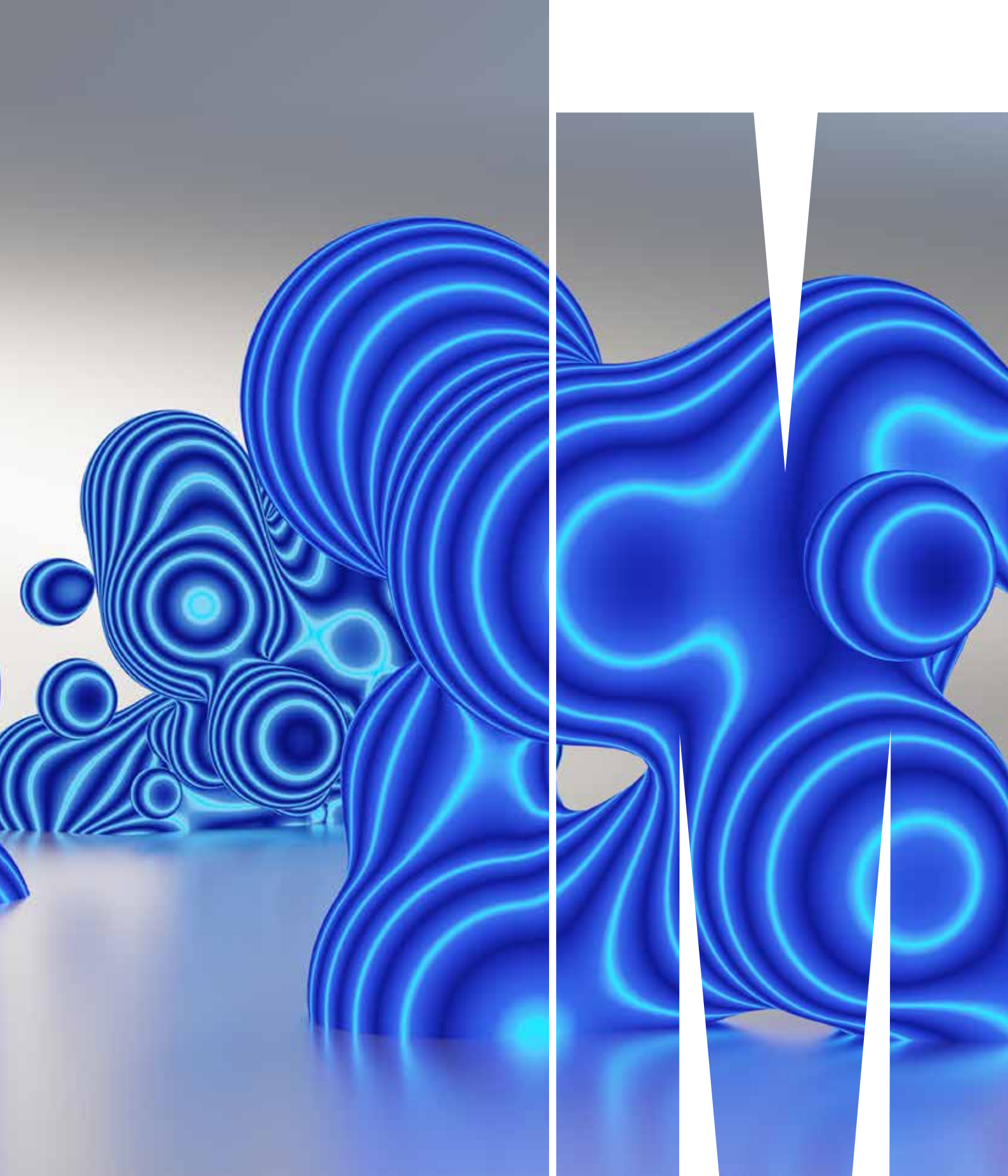


**A GUIDE  
TO ENTRY**  
2025



# BRING YOUR CURIOSITY, OPTIMISM AND PASSION, AND DISCOVER A COURSE THAT'S RIGHT FOR YOU.

It's an exciting time in your life as you enter the final years of secondary school and start to consider what your future might look like.

At Monash, we're here to help. We can offer you quality teaching, fantastic facilities and great career outcomes. As well as studying your course of choice, you'll have opportunities to enhance your learning experience through studying abroad, getting involved in clubs and societies, or completing work placements as part of your studies. There's so much we can offer you – let's get started.



## DID YOU KNOW?

Monash University is consistently ranked in the top 100 universities in the world, according to the Times Higher Education World University Rankings. A Monash degree could take you anywhere in the world.







# DISCOVER YOUR OPTIONS

You may or may not have ideas about what you want to pursue as a career. Either way, it's important to keep your options open and know what subjects are required to undertake certain courses at Monash (see page 6 for course information).

## FOLLOW YOUR PASSION

Most of our graduates will tell you that the more you put into a course, the more you get out of it, with better grades and better experiences. If your course is based on something you enjoy, and involves subjects you like and are good at, you're more likely to succeed.

## DO SOME DETECTIVE WORK

Do as much independent research as you can. There are loads of online testing tools that can provide insights into career opportunities. Visit the Australian government website at [www.yourcareer.gov.au](http://www.yourcareer.gov.au) to learn more about yourself and the world that awaits you. There's lots of information available to help you, but sometimes the challenge is working through it all. Here are our top three tips on where to start.

### 1. Come to our Open days and info nights

Nothing can replace experiencing the University environment for yourself. You get a feel for the atmosphere, the facilities and what the people are like, which can help with your end decision.

### 2. Visit our website

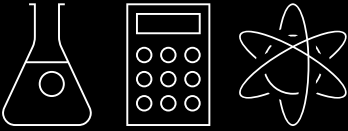
Our website is full of information. It can be a bit overwhelming but if you start at [monash.edu/study](http://monash.edu/study), you'll be able to find all you need.

### 3. Make a shortlist

You'll come across lots of information about courses – online and in print. To help make sense of your options, create a shortlist of key features you're looking for (e.g. career outcomes, course location, facilities) and check each course you research against these.

## TALK TO OTHERS, BUT DECIDE FOR YOURSELF


Talk to people who know you – parents, family, friends, teachers and career advisers. Tell them what you're considering, and ask them what they think you're good at. Ask the professionals you know what it's like to be an accountant, doctor, engineer, lawyer, nurse or teacher. Or try work experience – it's a great way to get a taste of a career that interests you.



**SCIENCE, NUMBERS  
AND TECHNOLOGY**



**I'M  
GOOD AT**



**WORDS, PICTURES  
AND STORIES**

**I WANT TO**

Engineering <  
Medicine, nursing and health sciences <  
Pharmacy and pharmaceutical science <  
Science <

**HELP PEOPLE**

> Arts  
> Education  
> Law  
> Medicine, nursing and health sciences

Business <  
Engineering <  
Information technology <  
Medicine, nursing and health sciences <  
Pharmacy and pharmaceutical science <  
Science <

**IMPROVE  
PEOPLE'S  
LIVES**

> Art, design and architecture  
> Arts  
> Education  
> Business  
> Law

Engineering <  
Information technology <  
Science <

**BUILD THINGS**

> Art, design and architecture

Engineering <  
Information technology <  
Science <

**DESIGN AND  
CREATE THINGS**

> Art, design and architecture

Engineering <  
Information technology <  
Science <

**IMPROVE THE  
ENVIRONMENT**

> Art, design and architecture  
> Arts  
> Business  
> Law

Business <  
Science <

**MAKE MONEY WORK**

> Business  
> Law

Business <  
Engineering <  
Information technology <  
Medicine, nursing and health sciences <  
Pharmacy and pharmaceutical science <  
Science <

**EXPLAIN THINGS  
TO PEOPLE**

> Art, design and architecture  
> Arts  
> Business  
> Education  
> Law

Information technology <

**ENTERTAIN**

> Art, design and architecture  
> Arts





# SO MUCH TO CHOOSE FROM

A comprehensive course at Monash is all about developing expertise. Each course offers you a variety of choices – majors or minors – based on what you want to focus on.

With every choice you make, you'll progressively focus on one or two study areas. When you graduate you'll be an expert in your area of interest. You'll graduate with a qualification that reflects your passions, capabilities and expertise.

Arts	Major	Minor
Anthropology	■	■
Archaeology and ancient history	■	■
Behavioural studies		■
Bioethics		■
Chinese studies	■	■
Communications and media studies	■	■
Criminology	■	■
Critical performance studies		■
Economics	■	■
European languages (French, German, Italian and Spanish and Latin American studies)	■ <sup>1</sup>	■
Film and screen studies	■	■
Gender studies	■	■
Global Asia	■	■
History	■	■
Holocaust and genocide studies		■
Human geography	■	■
Human rights	■	■
Indigenous cultures and histories	■	■
Indonesian studies	■	■
International relations	■	■
International studies	■	■
Japanese studies	■	■
Jewish studies		■
Journalism	■	■
Korean studies	■	■
Linguistics and English language	■	■
Literary studies	■	■
Music	■	■
Philosophy	■	■
Politics	■	■
Psychology	■ <sup>1</sup>	■
Sociology	■	■

Business	Major	Minor
Accounting	■	■
Banking and finance	■	■
Business analytics and statistics	■	■
Business law	■	■
Business management	■	■
Business studies	■	
Economics and business strategy	■	■
Financial econometrics	■	
Human resource management	■	■
International business	■	■
Marketing	■	■
Taxation	■	■

## Business Administration

Accountancy	■	■
Business administration studies	■	
Economics and business decisions		■
Finance and economics	■	
Management practice	■	■
Marketing and communications	■	■

## Commerce

Accounting	■	■
Actuarial studies	■	■
Behavioural commerce	■	■
Business analytics	■	■
Business law		■
Econometrics	■	■
Economics	■	■
Finance	■	■
Management studies	■	■
Marketing science	■	■
Mathematical foundations of econometrics	■	
Sustainability	■	■

## Information Technology

	Major	Minor
3D modeling and animation		■
Business information systems	■	■
Computer networks and security	■	■
Computer science		■
Cybersecurity		■
Data science		■
Games design		■
Games development	■	■
Interactive media	■	■
IT for business		■
Mobile apps development		■
Software development	■	■
Software engineering		■
Web development		■

## Science

Applied mathematics		■ <sup>1</sup>
Astrophysics	■ <sup>1</sup>	■
Biochemistry	■ <sup>1</sup>	■
Chemistry	■ <sup>1</sup>	■
Climate and atmospheric science	■ <sup>1</sup>	■
Computational science	■ <sup>1</sup>	■
Developmental biology	■	■
Earth science	■ <sup>1</sup>	■
Ecology and conservation biology	■ <sup>1</sup>	■
Environmental science	<small>only available as extended major</small>	
Financial and insurance mathematics	<small>only available as extended major</small>	
Genetics and genomics	■ <sup>1</sup>	■
Geographical science	■ <sup>1</sup>	■
Human pathology	■	■
Immunology	■ <sup>1</sup>	■
Mathematical statistics	■ <sup>1</sup>	■
Mathematics	■ <sup>1</sup>	■
Microbiology	■ <sup>1</sup>	■
Molecular biology		■
Pharmacology	■	■
Physics	■ <sup>1</sup>	■
Physiology	■	■
Plant sciences	■	■
Psychology	■ <sup>1</sup>	■
Pure mathematics	■ <sup>1</sup>	
Zoology	■	■

■ Major ■ Minor

<sup>1</sup> Also available as an extended major.



# DOUBLE DEGREES

## What is a double degree course?

A Monash double undergraduate degree course allows you to study towards two degrees at the same time. This means you can keep your options open, develop expertise in different but complementary areas, or simply pursue two areas of interest in greater depth. You'll be awarded with two testamurs, one for each degree completed.

Some double degree courses may require you to study across two campuses in order to complete your course. To be eligible for admission to a double degree course, you'll need to meet the academic entry requirements for both single degree courses.

For example, if you're applying for the Bachelor of Laws and Bachelor of Music double degree, you'll need to satisfy the subject prerequisites for both courses as well as any additional criteria that apply for either of the courses.





# 2023 UNDERGRADUATE COURSES AT A GLANCE

These tables provide the subject prerequisites, and a guide to the overall score, or an estimate, required for admission in 2025.

All scores are a guide only and can change each year, so you should always check closer to the date of applying. You may occasionally see RC against a score. This means 'Range of Criteria' and indicates that there are additional criteria you need to meet alongside your ATAR or IB score. These include folios, interviews or auditions, or additional forms.

If you're an interstate student, you can find all the interstate equivalencies on our website.

[monash.edu/study/interstate](https://monash.edu/study/interstate)

Course	Prerequisites				Indicative ATAR <sup>1</sup>	Indicative IB <sup>2</sup>
	English		Mathematics			
	VCE YEAR 12 ENGLISH	IB YEAR 12 ENGLISH (see page 12 for IB English prerequisites)	VCE MATHS	IB MATHS (see page 12 for IB Maths prerequisites)		

## ART DESIGN AND ARCHITECTURE

<b>Architectural Design I</b>					75.10	26
<b>Design I</b>					70.15	24
Design/Business			Units 3 and 4: at least 22 in Mathematical Methods (any) or Specialist Mathematics, or a score of at least 25 in Further Mathematics	Level 2	78.10	28
Design/Information Technology			Units 1 and 2: satisfactory completion in two units (any combination) of General Mathematics or Mathematical Methods or Specialist Mathematics	Level 1	83.05	30
Design/Media Communication					78.20	28
<b>Fine Art (Art History and Curating)</b>					71.85	25
Art History and Curating/Business	Units 3 and 4: at least 27 in English (EAL) or 25 in English other than EAL	Level 1	Units 3 and 4: at least 22 in Mathematical Methods (any) or Specialist Mathematics, or a score of at least 25 in Further Mathematics	Level 2	E: 75.80	E: 27
Art History and Curating/Media Communication					E: 77	E: 27
<b>Fine Art I</b>					RC	RC
Fine Art/Business			Units 3 and 4: at least 22 in Mathematical Methods (any) or Specialist Mathematics, or a score of at least 25 in Further Mathematics	Level 2	RC	RC
Fine Art/Information Technology			Units 1 and 2: satisfactory completion in two units (any combination) of General Mathematics or Mathematical Methods or Specialist Mathematics	Level 1	RC	RC
Fine Art/Media Communication					RC	RC

## ARTS, HUMANITIES AND SOCIAL SCIENCES

<b>Arts M I L</b>					CL: 80.05 CA: 75.05	CL: 29 CA: 26
Arts/Criminology					80.10	29
Arts/Fine Art <sup>3,4</sup>	Arts/Fine Art				RC	RC
	Arts/Art History and Curating				81.35	29
Arts/Music <sup>3</sup>					RC	RC
<b>Criminology</b>	Units 3 and 4: at least 27 in English (EAL) or 25 in English other than EAL	Level 1			77	27
Criminology/Information Technology			Units 1 and 2: satisfactory completion in two units (any combination) of General Mathematics or Mathematical Methods or Specialist Mathematics	Level 1	77	27
<b>Criminology and Policing</b>					E: 77	E: 27



## 2023 UNDERGRADUATE COURSES AT A GLANCE

Course	Prerequisites				Indicative ATAR <sup>1</sup>	Indicative IB			
	English		Mathematics						
	VCE YEAR 12 ENGLISH	IB YEAR 12 ENGLISH (see page 12 for IB English prerequisites)	VCE MATHS	IB MATHS (see page 12 for IB Maths prerequisites)					
<b>ARTS, HUMANITIES AND SOCIAL SCIENCES</b>									
<b>Global Studies</b>	Units 3 and 4: at least 27 in English (EAL) or 25 in English other than EAL	Level 1	Units 1 and 2: satisfactory completion in two units (any combination) of General Mathematics or Mathematical Methods or Specialist Mathematics	Level 1	81.75	29			
Global Studies/Information Technology					E:81.75	E:29			
<b>Media Communication</b>					77.25	27			
<b>Music<sup>3</sup></b>			RC	RC					
<b>Politics, Philosophy and Economics</b>			Units 3 and 4: at least 22 in Mathematical Methods (any) or Specialist Mathematics, or 25 in Further Mathematics	Level 2	Level 2	E: 83	E: 30		
Politics, Philosophy and Economics/Arts	RC	RC							
<b>BUSINESS</b>									
<b>Accounting</b>	Units 3 and 4: at least 27 in English (EAL) or 25 in English other than EAL	Level 1	Units 3 and 4: at least 22 in Mathematical Methods (any) or Specialist Mathematics, or 25 in Further Mathematics	Level 2	77.20	27			
<b>Actuarial Science</b>			Units 3 and 4: at least 25 in Mathematical Methods (any) or Specialist Mathematics	Level 3	87.65	32			
<b>Banking and Finance</b>	Units 3 and 4: at least 27 in English (EAL) or 25 in English other than EAL	Level 1	Units 3 and 4: at least 22 in Mathematical Methods (any) or Specialist Mathematics, or 25 in Further Mathematics	Level 2	79.10	28			
<b>Business <sup>1</sup></b>					76	27			
Business/Accounting					79.10	28			
Business/Arts					79.35	28			
Business/Banking and Finance					80.45	29			
Business/Information Technology					78.05	28			
Business/International Business					78.15	28			
Business/Marketing					80.45	29			
Business/Media Communication					79.55	28			
<b>Business Administration <sup>1</sup></b>	Units 3 and 4: at least 27 in English (EAL) or 25 in English other than EAL	Level 1	Units 1 and 2: satisfactory completion in two units (any combination) of General Mathematics or Mathematical Methods or Specialist Mathematics	Level 1	70.60	25			
<b>Commerce</b>	Units 3 and 4: at least 27 in English (EAL) or 25 in English other than EAL	Level 1	Units 3 and 4: at least 25 in one of Mathematical Methods (any) or Specialist Mathematics	Level 3	86.50	32			
Commerce/Actuarial Science					88.05	33			
Commerce/Arts					87.90	33			
Commerce/Biomedical Science <sup>5</sup>					92.10	35			
Commerce/Computer Science					92.10	35			
Commerce/Economics					87.40	32			
Commerce/Finance					88.50	33			
Commerce/Global Studies					87.55	32			
Commerce/Information Technology					87.80	33			
Commerce/Music <sup>3</sup>					RC	RC			
Commerce/Politics, Philosophy and Economics					RC	RC			
Commerce/Science					87.90	33			
<b>Economics</b>					85.90	31			
<b>Finance</b>					86.15	32			
<b>International Business</b>					Units 3 and 4: at least 22 in Mathematical Methods (any) or Specialist Mathematics, or 25 in Further Mathematics	Level 2	Level 2	76.45	27
International Business/Arts								78.05	28
<b>Marketing</b>								77.70	28
Marketing/Arts	82.95	30							
Marketing/Media Communication	77.65	28							

# 2023 UNDERGRADUATE COURSES AT A GLANCE

Course	Prerequisites				Indicative ATAR <sup>1</sup>	Indicative IB <sup>2</sup>		
	English		Mathematics				Science <sup>2</sup>	
	VCE YEAR 12 ENGLISH	IB YEAR 12 ENGLISH (see page 12 for IB English prerequisites)	VCE MATHS	IB MATHS (see page 12 for IB Maths prerequisites)			VCE SCIENCE	IB SCIENCE

## EDUCATION

<b>Education 1</b>	Early childhood and primary education	Units 3 and 4: at least 30 in English (EAL) or 25 in English other than EAL	Level 1	Units 1 and 2: satisfactory completion in two units (any combination) of General Mathematics or Mathematical Methods or Specialist Mathematics	Level 1			71.15 RC	25 RC
	Primary education							71.70 RC	25 RC
	Primary and secondary education							71.15 RC	25 RC
	Primary and Secondary health and physical education							73.95 RC	26 RC
	Primary and Secondary inclusive education <sup>6</sup>							E: 77 RC	E:27 RC
	Secondary health and physical education							71.05 RC	25 RC
	Secondary education (as part of double degree)							see entries below	
<b>Education (double degrees)</b>									
	Primary Education/ Arts			Units 1 and 2: satisfactory completion in two units (any combination) of General Mathematics or Mathematical Methods or Specialist Mathematics	Level 1			80.10 RC	30 RC
	Secondary Education/Arts							80.05 RC	30 RC
	Primary Education/ Business			Units 3 and 4: at least 22 in Mathematical Methods (any) or Specialist Mathematics, or 25 in Further Mathematics	Level 2			80 RC	29 RC
	Secondary Education/Business							82.15 RC	30 RC
	Primary Education/ Fine Art <sup>3,4</sup>							RC	RC
	Secondary Education/ Fine Art <sup>3,4</sup>							RC	RC
	Primary Education/Music <sup>3</sup>			Units 1 and 2: satisfactory completion in two units (any combination) of General Mathematics or Mathematical Methods or Specialist Mathematics	Level 1			RC	RC
	Secondary Education/Music <sup>3</sup>							RC	RC
	Primary Education/Science							85 RC	31 RC
	Secondary Education/Science					Units 3 and 4: at least 25 in one in Science approved list <sup>2</sup>	At least 4 at SL or 3 at HL in Science approved list <sup>2</sup>	86.10 RC	32 RC

## ENGINEERING

<b>Engineering M</b>	Engineering	Units 3 and 4: at least 27 in English (EAL) or 25 in English other than EAL	Level 1	Units 3 and 4: a study score of at least 25 in one of Mathematical Methods (any) or Specialist Mathematics	Level 3			86	32
	Biomedical Engineering							87.25	32
<b>Engineering (accelerated master's)</b>									
	Engineering/ Architectural Design					Units 3 and 4: at least 25 in one of Chemistry or Physics	At least 4 at SL or 3 at HL in one of Chemistry or Physics	94.20	37
	Engineering/Arts							90.25	34
	Engineering/Biomedical Science					Units 3 and 4: at least 25 in Chemistry	At least 4 at SL or 3 at HL in one of Chemistry	92.20	35
	Engineering/Commerce							90.75	34
	Engineering/Computer Science					Units 3 and 4: at least 25 in one of Chemistry or Physics	At least 4 at SL or 3 at HL in one of Chemistry or Physics	90.15	34
	Engineering/Design							90.60	34
	Engineering/Information Technology							88.85	33
	Engineering/Pharmaceutical Science					Units 3 and 4: at least 25 in Chemistry	At least 4 at SL or 3 at HL in one of Chemistry	90.10	34
	Engineering/Science					Units 3 and 4: at least 25 in one of Chemistry or Physics	At least 4 at SL or 3 at HL in one of Chemistry or Physics	89	33



## 2023 UNDERGRADUATE COURSES AT A GLANCE

Course	Prerequisites					Indicative ATAR <sup>1</sup>	Indicative IB <sup>1</sup>	
	English		Mathematics		Science <sup>2</sup>			
	VCE YEAR 12 ENGLISH	IB YEAR 12 ENGLISH (see page 12 for IB English prerequisites)	VCE MATHS	IB MATHS (see page 12 for IB Maths prerequisites)	VCE SCIENCE			IB SCIENCE

### INFORMATION TECHNOLOGY

<b>Computer Science</b>	Units 3 and 4: at least 27 in English (EAL) or 25 in English other than EAL	Level 1	Units 3 and 4: at least 25 in one of Mathematical Methods (any) or Specialist Mathematics	Level 3		84.15	31	
<b>Computer Science Advanced</b>						95.70	38	
<b>Information Technology I</b>						80.05	29	
Information Technology/Arts						82.55	30	
Information Technology/Science			Units 1 and 2: satisfactory completion in two units (any combination) of General Mathematics or Mathematical Methods or Specialist Mathematics	Level 1	Units 3 and 4: at least 25 in one of Science approved list <sup>2</sup>	At least 4 at SL or 3 at HL in Science approved list <sup>2</sup>	86.25	32

### LAWS

<b>Laws</b>	Units 3 and 4: at least 35 in English (EAL) or 30 in English other than EAL	Level 2					97.10	39
Laws/Arts							97	39
Laws/Biomedical Science			Units 3 and 4: at least 25 in one of Mathematical Methods (any) or Specialist Mathematics, or Physics	Level 3	Units 3 and 4: at least 25 in Chemistry	At least 4 at SL or 3 at HL in Chemistry	97.25	40
Laws/Commerce							97	39
Laws/Computer Science							97.10	39
Laws/Criminology							97	39
Laws/Engineering			Units 3 and 4: at least 25 in one of Mathematical Methods (any) or Specialist Mathematics	Level 3	Units 3 and 4: at least 25 in either Chemistry or Physics	At least 4 at SL or 3 at HL in either Chemistry or Physics	97.30	40
Laws/Global Studies							97.05	39
Laws/IT			Units 1 and 2: satisfactory completion in two units (any combination) of General Mathematics or Mathematical Methods or Specialist Mathematics	Level 1			97	39
Laws/Music <sup>3</sup>							RC	RC
Laws/Politics Philosophy and Economics	Units 3 and 4: at least 22 in Mathematical Methods (any) or Specialist Mathematics or a score of at least 25 in Further Mathematics	Level 2			97 RC	39 RC		
Laws/Science				Units 3 and 4: at least 25 in one of Science approved list <sup>2</sup>	At least 4 at SL or 3 at HL in Science approved list <sup>2</sup>	97	39	

<sup>2</sup> Science approved list: **VCE:** Biology, Chemistry, Environmental Science, Geography, Mathematical Methods (any), Specialist Mathematics, Physics or Psychology. **IB (SL or HL):** Biology, Chemistry, Environmental Systems and Societies (SL only), Further Mathematics (HL only), Geography, Mathematics, Mathematics: Analysis and Approaches (HL only), Mathematics: Applications and Interpretations (HL only), Physics or Psychology.

## 2023 UNDERGRADUATE COURSES AT A GLANCE

Course	Prerequisites						Indicative ATAR <sup>1</sup>	Indicative IB <sup>1</sup>						
	English		Mathematics		Science <sup>2</sup>									
	VCE YEAR 12 ENGLISH	IB YEAR 12 ENGLISH (see page 12 for IB English prerequisites)	VCE MATHS	IB MATHS (see page 12 for IB Maths prerequisites)	VCE SCIENCE	IB SCIENCE								
<b>MEDICINE, NURSING AND HEALTH SCIENCES</b>														
<b>Biomedical Science</b>	Units 3 and 4: at least 27 in English (EAL) or 25 in English other than EAL	Level 1	Units 3 and 4: at least 25 in one of Mathematical Methods (any) or Specialist Mathematics, or 25+ in Physics	Level 3	Units 3 and 4: 25+ in Chemistry	At least 4 at SL or 3 at HL Chemistry	97.05	34						
<b>Biomedical Science (Scholars Program)</b>			Units 3 and 4: 35+ in Maths Methods or Specialist Maths or Physics	At least 6 in SL or 5 in HL Mathematics or Physics, or 5 in HL Further Mathematics	Units 3 and 4: 35+ in Chemistry	At least 6 at SL or 5 HL in Chemistry	98.05	41						
<b>Health Sciences <b>I</b></b>								73.30	26					
<b>Medicine</b>	Units 3 and 4: at least 35 in English (EAL) or 30 in English other than EAL	Level 2			Units 3 and 4: at least 30+ in Chemistry	At least 5 at SL or 4 HL in Chemistry	RC	RC						
<b>Nursing <b>I</b></b>	Units 3 and 4: at least 27 in English (EAL) or 25 in English other than EAL	Level 1	Units 1 and 2: satisfactory completion in two units (any combination) of General Mathematics or Mathematical Methods or Specialist Mathematics	Level 1			CL: 77.15 RC	27 RC						
<b>Nursing (Scholars Program)</b>							PE: 72.20 RC	25 RC						
<b>Nursing and Midwifery</b>							CL: 90.55 RC	34 RC						
<b>Nutrition Science</b>							PE: 90.50 RC	34 RC						
<b>Nutrition Science (Scholars Program)</b>							91 RC	34 RC						
<b>Occupational Therapy <b>I</b></b>					Units 3 and 4: at least 25 in one of Biology or Chemistry	At least 4 at SL or 3 at HL in one of Biology or Chemistry	75.10	26						
							92.45	35						
							85.15	31						
<b>Paramedicine <b>I</b></b>	Units 3 and 4: at least 30 in English (EAL) or 25 in English other than EAL	Level 1	Units 3 and 4: at least 22 in Mathematical Methods (any) or Specialist Mathematics, or a score of at least 25 in Further Mathematics	Level 2			87.95	33						
<b>Physiotherapy</b>	Units 3 and 4: at least 35 in English (EAL) or 30 in English other than EAL	Level 2			Units 3 and 4: at least 25 in two of Biology, Chemistry, Mathematical Methods (any), Specialist Mathematics, or Physics	At least 4 at SL or 3 at HL in two of Biology, Chemistry, Further Mathematics (HL only), Mathematics or Physics	96.95	39						
<b>Psychology</b>	Units 3 and 4: a study score of at least 27 in English (EAL) or 25 in English other than EAL	Level 1					89.50	33						
<b>Public Health <b>I</b></b>							85.80	31						
<b>Radiation Sciences <b>I</b></b>							Units 3 and 4: 25 in one of Mathematical Methods (any) or Specialist Mathematics	Level 3					82.35	30
<b>Radiation Sciences (Informatics)</b>														
<b>Radiography and Medical Imaging</b>	Units 3 and 4: at least 35 in English (EAL) or 30 in English other than EAL	Level 2	Units 3 and 4: at least 25 in one of Mathematical Methods (any) or Specialist Mathematics	Level 3	Units 3 and 4: at least 25 in either Biology or Physics	At least 4 at SL or 3 at HL in either Biology or Physics	98	41						

<sup>2</sup> Science approved list: **VCE:** Biology, Chemistry, Environmental Science, Geography, Mathematical Methods (any), Specialist Mathematics, Physics or Psychology. **IB (SL or HL):** Biology, Chemistry, Environmental Systems and Societies (SL only), Further Mathematics (HL only), Geography, Mathematics, Mathematics: Analysis and Approaches (HL only), Mathematics: Applications and Interpretations (HL only), Physics or Psychology.



## 2023 UNDERGRADUATE COURSES AT A GLANCE

Course	Prerequisites						Indicative ATAR <sup>1</sup>	Indicative IB <sup>1</sup>
	English		Mathematics		Science <sup>2</sup>			
	VCE YEAR 12 ENGLISH	IB YEAR 12 ENGLISH (see page 12 for IB English prerequisites)	VCE MATHS	IB MATHS (see page 12 for IB Maths prerequisites)	VCE SCIENCE	IB SCIENCE		

### PHARMACY AND PHARMACEUTICAL SCIENCES

Pharmaceutical Science	Units 3 and 4: at least 27 in English (EAL) or 25 in English other than EAL	Level 1	Units 3 and 4: at least 25 in one of Mathematical Methods (any) or Specialist Mathematics.	Level 3	Units 3 and 4: at least 25 in Chemistry	At least 4 at SL or 3 at HL in Chemistry	84.05	30
Pharmaceutical Science Advanced							90.05	34
Pharmaceutical Science Advanced (Scholars Program)							98.15	41
Pharmacy							88.20	33
Pharmacy master's pathway							88.10	33
Pharmacy (Scholars Program)							98.05	41

### SCIENCE

Applied Data Science	Units 3 and 4: at least 27 in English (EAL) or 25 in English other than EAL	Level 1	Units 3 and 4: at least 25 in one of Mathematical Methods (any) or Specialist Mathematics.	Level 3			85.25	31	
Applied Data Sciences Advanced	Units 3 and 4: at least 27 in English (EAL) or 25 in English other than EAL	Level 1	Units 3 and 4: 30+ in Maths Methods or Specialist Maths	Level 3			91.35	35	
Science <b>I</b> <b>L</b>	Units 3 and 4: at least 27 in English (EAL) or 25 in English other than EAL	Level 1			Units 3 and 4: a study score of at least 25 in one of the Science approved list <sup>2</sup>	At least 4 at SL or 3 at HL in one of the Science approved list <sup>2</sup> .	85.05	31	
Science Advanced – Global Challenges	Units 3 and 4: at least 35 in English (EAL) or 30 in English other than EAL	Level 2			Units 3 and 4: at least 30 in one of Science approved list <sup>2</sup>	At least 5 SL or 4 at HL in Science approved list <sup>2</sup>	RC	RC	
Science Advanced – Research	Units 3 and 4: at least 35 in English (EAL) or 30 in English other than EAL		Units 3 and 4: 30+ in Maths Methods or Specialist Maths	At least 5 in Mathematics SL or 4 HL in Mathematics or Further Mathematics	Units 3 and 4: at least 30 in two subjects in the Science approved list <sup>2</sup>	At least 5 SL or 4 at HL in two subjects in the Science approved list <sup>2</sup>	95.05	37	
Science/Arts	Units 3 and 4: at least 27 in English (EAL) or 25 in English other than EAL	Level 1			Units 3 and 4: a study score of at least 25 in one of Science approved list <sup>2</sup>	At least 4 at SL or 3 at HL in Science approved list <sup>2,7</sup>	85.20	31	
Science/Biomedical Science			Units 3 and 4: 25 in one of Mathematical Methods (any) or Specialist Mathematics. Or 25+ in Physics.	Level 3	Units 3 and 4: at least 25 in Chemistry	At least 4 at SL or 3 at HL in Chemistry	91.20	34	
Science/Computer Science			Units 3 and 4: 25 in one of Mathematical Methods (any) or Specialist Mathematics	Level 3			85.55	31	
Science/Global Studies						Units 3 and 4: a study score of at least 25 in one of the Science approved list <sup>2</sup>	At least 4 at SL or 3 at HL in Science approved list <sup>2</sup>	85.05	31
Science/Music <sup>3</sup>								RC	RC

**M** Master's accelerated pathway    **I** Indigenous entry pathway    **L** Laws pathway

RC – Range of criteria.

E – Estimated: the provided score is estimated and is to be used as a guide only.

CL – Clayton

CA – Caulfield

PE – Peninsula

<sup>1</sup> Indicative – The scores provided are to be used as a guide only, and are either the lowest selection rank to which an offer was made in 2022 or an estimate (E).

<sup>2</sup> Science approved list: **VCE**: Biology, Chemistry, Environmental Science, Geography, Mathematical Methods (any), Specialist Mathematics, Physics or Psychology.  
**IB** (SL or HL): Biology, Chemistry, Environmental Systems and Societies (SL only), Further Mathematics (HL only), Geography, Mathematics, Mathematics: Analysis and Approaches (HL only), Mathematics: Applications and Interpretations (HL only), Physics or Psychology.

<sup>3</sup> This course has additional selection requirements; see [monash.edu/study](https://monash.edu/study).

<sup>4</sup> The selection requirements for Fine Art only apply to the Fine Art specialisation.

<sup>5</sup> For the Commerce and Biomedical Science double degree, you're also required to take Chemistry and achieve either: **VCE Units 3 and 4**: a study score of at least 25 in Chemistry; **IB** at least 4 in Chemistry SL or 3 in Chemistry HL.

<sup>6</sup> The Bachelor of Education (Honours) in Primary and Secondary Inclusive Education is still to be confirmed, visit [monash.edu/study](https://monash.edu/study) for updated information.

<sup>7</sup> Mathematics or Further Mathematics can only be used if not counted towards the Maths prerequisite.

# IB ACADEMIC PREREQUISITE LEVELS

All Monash undergraduate courses require you to have previously studied and achieved required standards in certain specified subjects.

The table below outlines the prerequisite levels and subjects.

English		Mathematics			Science
■ Level 1	■ Level 2	■ Level 1	■ Level 2	■ Level 3	■ Science approved list <sup>2</sup>
At least 4 in one of the following SL subjects: <ul style="list-style-type: none"> <li>English A: Literature, or</li> <li>English A: Language and Literature, or</li> <li>Literature and Performance, OR</li> </ul> At least 3 in one of the following HL subjects: <ul style="list-style-type: none"> <li>English A: Literature, or</li> <li>English A: Language and Literature, OR</li> </ul> At least 5 in one of the following SL subjects: <ul style="list-style-type: none"> <li>English AB, or</li> <li>English B, OR</li> </ul> At least 4 in the following HL subject: <ul style="list-style-type: none"> <li>English B.</li> </ul>	At least 5 in one of the following SL subjects: <ul style="list-style-type: none"> <li>English A: Literature, or</li> <li>English A: Language and Literature, or</li> <li>Literature and Performance, OR</li> </ul> At least 4 in one of the following HL subjects: <ul style="list-style-type: none"> <li>English A: Literature, or</li> <li>English A: Language and Literature, OR</li> </ul> At least 6 in one of the following SL subjects: <ul style="list-style-type: none"> <li>English AB, or</li> <li>English B, OR</li> </ul> At least 5 in the following HL subject: <ul style="list-style-type: none"> <li>English B.</li> </ul>	At least 3 in any mathematics subject at SL or HL level.	At least 4 in one of the following SL subjects: <ul style="list-style-type: none"> <li>Math Studies, or</li> <li>Mathematics: Applications and Interpretations, or</li> <li>Mathematics, or</li> <li>Mathematics: Analysis and Approaches</li> </ul> At least 3 in one of the following HL subjects: <ul style="list-style-type: none"> <li>Mathematics: Applications and Interpretations, or</li> <li>Further Mathematics, or</li> <li>Mathematics: Analysis and Approaches</li> </ul>	At least 4 in one of the following SL subjects: <ul style="list-style-type: none"> <li>Mathematics, or</li> <li>Mathematics: Analysis and Approaches, OR</li> </ul> At least 3 in one of the following HL subjects: <ul style="list-style-type: none"> <li>Mathematics: Applications and Interpretations, Mathematics, or</li> <li>Further Mathematics, or</li> <li>Mathematics: Analysis and Approaches.</li> </ul>	At least 4 at SL or 3 at HL in Science approved list, unless otherwise stated.







## DISCOVER MONASH IN 2022

Do you want to learn more about Monash, get a feel for which course is right for you, or perhaps experience what life and study would be like on one of our four campuses? We've got an event to suit you.

### About Monash events

Learn more about what your study options are, pathway opportunities, scholarships, SEAS, fees, accommodation and everything else there is to know about studying at Monash.

### Discipline and Course events

Hear from current and past students as well as academics across our ten faculties. You'll find out more about our courses, internships, career outcomes and so much more!

### Campus experience events

Join us at Open Day to see and experience student life at Monash. You can also tour one of our four Victorian campuses throughout the year. Can't make it to a tour? That's ok, we have a virtual option for you.

### Find out more!

[monash.edu/discover](https://monash.edu/discover)



**MONASH UNIVERSITY**  
[monash.edu](https://monash.edu)

**FIND A COURSE**  
[monash.edu/study](https://monash.edu/study)

### FUTURE STUDENT ENQUIRIES

**Australian citizens, permanent residents  
and New Zealand citizens**  
[monash.edu/study/contact](https://monash.edu/study/contact)

**International students**  
T Australia freecall: 1800 MONASH (666 274)  
T +61 3 9903 4788 (outside Australia)  
E [study@monash.edu](mailto:study@monash.edu)

