

12th Pharmacology of GPCRs
& MPGPCR Joint Satellite Meeting

Accommodation around Monash Institute of Pharmaceutical Sciences (MIPS)

Thank you all for attending the 12th Pharmacology of GPCRs and MPGPCR joint satellite meeting. It is our great pleasure to help you prepare for your arrival in Melbourne, Australia, and make it a memorable three-day conference. For your convenience, the Organising Committee has listed a range of accommodation nearby MIPS (see map below for details), as well as a “How to...” guide section.



- [The Larwill Studio, Parkville](#) – *our personal favourite*

Stay inspired in North Melbourne at The Larwill Studio, a boutique hotel that draws its inspiration from the Australian artist David Larwill. Located on Flemington Road, approximately 1.2km from MIPS (a 20-min walk, or a 15-min walk plus tram 19), The Larwill Studio offers bedrooms for an average price of \$190 per night, with space to move, heaps of natural light, work desks, king-sized fluffy beds, sparkling bathrooms and quirky little extras.

Address: 48 Flemington Road, Parkville 3052.

website: <https://www.artserieshotels.com.au/larwill/>

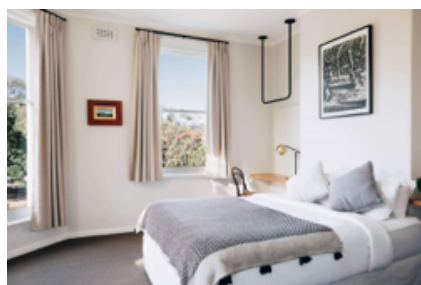


- [The Naughtons Hotel, Parkville](#) – *our second favourite*

Situated in Parkville, one of the oldest suburbs in Melbourne, Naughtons Hotel sits on the fringe between the Melbourne CBD and the inner north. The number 19 tram stops right at our doorstep on Royal Parade (how convenient!), taking you to the Melbourne CBD in under 10 minutes, or to MIPS in 5 minutes. You can also directly walk to MIPS, it I only takes you 10 minutes. At the Naughtons Hotel, you'll be sure to have comfortable beds, perfectly plump pillows, and bright, cosy rooms. With friendly staff and an abundance of food and drink waiting for you downstairs, you're sure to have the perfect stay.

Address: 43 Royal Parade, Parkville 3052.

website: <https://naughtonshotel.com.au>

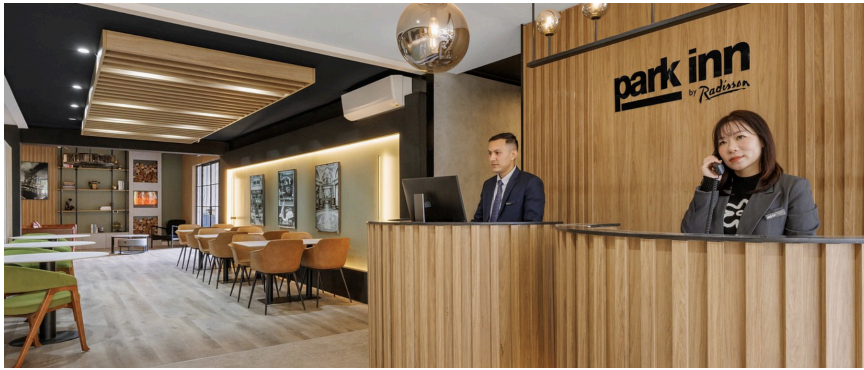


- [The Park Inn by Radisson, Parkville](#)

Re-Established in 2023, The Parkmore Hotel has been a beacon of hospitality in Parkville, providing guests with exceptional service and unforgettable experiences. Our commitment to excellence and attention to detail ensures that every stay with us is a memorable one. Conveniently located next door (literally) to MIPS, this is the perfect place for those who wish to stay close to the conference. The number 19 tram stops right at our doorstep on Royal Parade, taking you to the CBD in under 10 minutes, and you will be only a 5-min walk from the magical Melbourne Zoo.

Address: 441 Royal Pde, Parkville, VIC, 3052.

website: <https://www.radissonhotels.com/en-us/hotels/park-inn-melbourne-carlton>

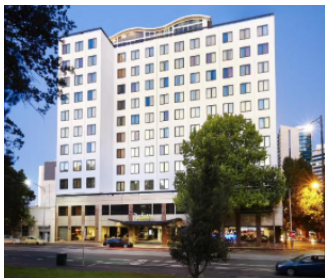


● [The Radisson on Flagstaff, Melbourne](#)

Stay at Radisson on Flagstaff Gardens Melbourne and explore our beautiful city when you are not at the conference. To get to MIPS, just walk a few minutes to Elizabeth Street and jump on tram number 19. The trip is only a 10-15 minute ride. Alternatively, you can also walk to MIPS, though it might take you 35 minutes. Located on the premises, the award-winning HQ's on William provides expertly prepared dishes from a seasonally rotating menu.

Address: 380 William St, Melbourne VIC 3000

website: <https://www.radissonhotels.com/en-us/hotels/radisson-melbourne-flagstaff-gardens>

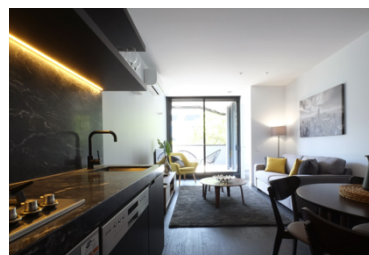


● [The Turnkey Accommodation, North Melbourne](#)

These beautiful North Melbourne apartments are located only a 10-minute walk from the CBD, and a 20-minute walk from MIPS. Perhaps an ideal option for those who would like to share a place with friends.

Address: 33 Blackwood St, North Melbourne VIC 3051

website: <http://www.turnkeyaccommodation.com.au/North-Melbourne#all>



● [The Essence Hotel, Carlton](#)

The Essence Hotel Carlton offers cosy, modern accommodation located near some of the city's best sightseeing and attractions. It is also conveniently located only a 15-minute walk to MIPS.

Address: 609 Swanston St, Carlton, VIC 3053

website: <https://www.essencehotels.com.au/carlton>



“How to...” travel to Australia from overseas?

Australia's government is committed to making conferences in Australia easy to attend and has set up the International Event Coordinator Network, which provides support on visa issues. Australia's Electronic Travel Authority provides instant online applications for over 30 countries and enables conference attendees to spend up to three months in Australia. For more details, see the link: <https://www.homeaffairs.gov.au/trav/visa/appl/electronic-travel-authority>. Some international attendees may require an invitation letter from the conference committee. If required, please contact: MPGPCCR.Conference@monash.edu. Once your ETA is approved, you can start booking flights to Melbourne. Melbourne is easily accessible with over 480 international flights per week, so many attendees will not require a connecting flight and can fly directly into Melbourne.

“How to...” get to the CBD/hotel from the airport?

Your plane has finally touched down at Melbourne Airport – you'd never know Melbourne was that far from the rest of the world! Now you need to get to the Central Business District (CBD). So, which mode of transportation will work best for you? The airport is located 22km north-west of the city centre, and here are some options for you:

1. The most convenient option is the **Skybus service**, a 24/7 shuttle that runs to and from the Coach Terminal at Southern Cross Station, located on Spencer Street in the Central Business District. Fare: \$25 one-way.
2. The most independent option is to **hire a car**, especially if you wish to spend a little time around Melbourne and its surrounding countryside a few days before/after the meeting. Melbourne Airport hosts several car rental operators, including Hertz, Europcar, Budget, Avis, and Thrifty. The driving routes to the city are quite straightforward, and the turn offs are well signposted. However, keep in mind that many of the hotels in the city will charge you for parking.
3. The fastest option is to take a **taxi/Uber**. You can catch a taxi from the designated taxi ranks at the airport, which are located on the ground floor outside Terminal 1 and between Terminal 3 and 2. Fare: approximately \$95 one-way.

“How to...” travel within Melbourne?

You can walk from place to place, although at this time of the year, the weather can be cold and changeable. Alternatively, you can jump on buses, trams and trains, using **Victoria's Public**

Transport network. A daily fare is \$11 on weekdays and \$5.50 on weekends. To access these services, you will need a **Myki card**. The quickest and most direct way to obtain a Myki card is to go to the Skybus terminal and buy a Myki Card there, or purchase it from a Metro premium station, some tram stops and bus interchanges, or online at ptv.vic.gov.au. Alternatively, if you have a compatible Android phone, you can use the Mobile myki option via your digital wallet.

“How to...” get to MIPS from the CBD, or vice versa?

Monash Institute of Pharmaceutical Sciences (MIPS) is located 2.5km north of the CBD. It takes approximately 40min to walk from Melbourne Central train station to MIPS, along Elizabeth Street, then Royal Parade. Alternatively, several trams can also bring you close to MIPS:

1. Take the number 19 (North Coburg line) tram, which travels along Elizabeth Street, Royal Parade and Sydney Road. The trip from Melbourne CBD takes about 15 minutes. Get off at Stop 16.
2. Take the number 55/58 (West Coburg line) trams, which travel along Flemington Road, then behind the Melbourne Zoo and step out at Stop 26. Then it is a 5-minute walk to MIPS
3. Catch the Upfield line train from Flinders Street, Southern Cross, or any City Loop station to Royal Park Railway Station (near tram 55/58 Stop 26), and walk through the park from there.