

**ENTRY  
SCHEMES**  
2025



# WE CAN CHANGE A NUMBER, SO YOU CAN CHANGE YOUR LIFE

Not everyone's story is the same. Life can get in the way of study. And we know your ATAR may not reflect your true academic ability.

No matter the circumstances, we recognise and support talent. That's why we offer entry schemes to help you enter your preferred course at Monash, by considering your life circumstances.

If you're inspired by big ideas and fired up with ambition, you'll fit right in at Monash.

## Entry schemes

The Monash Guarantee promises entry at a lower ATAR, while the Special Entry Access Scheme (SEAS) adjusts your selection rank. Indigenous Australians, you'll also be eligible for entry through the Monash Indigenous Entry Scheme.

Having these schemes means that we can consider as many students as possible. In all cases, you must still meet prerequisites and any other requirements your preferred course might have. For example, you must pass the UCAT to enter medicine, and audition to enter music.

Depending on your situation and background, you could be eligible for the Monash Guarantee or SEAS, or both. You don't have to choose between them. All you need to do is apply for SEAS through VTAC, and leave the rest to VTAC and us. Most Victorian universities use SEAS, while the Monash Guarantee is specific to Monash University.

## THE MONASH GUARANTEE

You could be eligible for the Monash Guarantee if you:

- have experienced financial disadvantage
- are an Indigenous Australian
- attend a Monash-listed under-represented school
- live in a low socio-economic area
- live in or go to school in a regional or remote area.

### How it works

Most Monash courses have a Monash Guarantee ATAR. You'll find them listed within the course pages on our website and in the table opposite. For most courses, if you meet the Monash Guarantee criteria, achieve or exceed the Monash Guarantee ATAR, and complete or meet all course prerequisites, you're guaranteed a place in that course. There are some exceptions, which are explained in the table.

### Eligibility

To be eligible for the Monash Guarantee, you must:

- be studying an Australian Year 12 or International Baccalaureate in 2024
- meet or exceed the Monash Guarantee ATAR for your preferred course
- satisfy all course-specific prerequisites and requirements, such as the UCAT, a portfolio, interview or audition
- be an Australian or New Zealand citizen, or holder of an Australian permanent resident or permanent humanitarian visa
- demonstrate that you've met at least one of the following listed criteria:

#### Financial disadvantage

To demonstrate financial disadvantage, you must have documents that prove at least one of the following:

- You receive an income-tested Centrelink benefit (e.g. Youth allowance, Abstudy, Health Care Card)
- Your parents/guardians receive an income-tested Centrelink benefit (e.g. Family Tax Benefit A)
- You and/or your family are facing financial hardship or excessive financial obligations (e.g. living on a farm suffering from drought or floods).

#### Indigenous Australian

Monash is committed to encouraging more Indigenous students to access and succeed at university. If you're an Indigenous Australian and you meet the required ATAR, you'll be eligible for the Monash Guarantee.

#### Under-represented school

Monash has identified more than 1000 schools across Australia as being under-represented at university. If you attend one of these schools and meet the required ATAR, you'll be eligible for the Monash Guarantee.

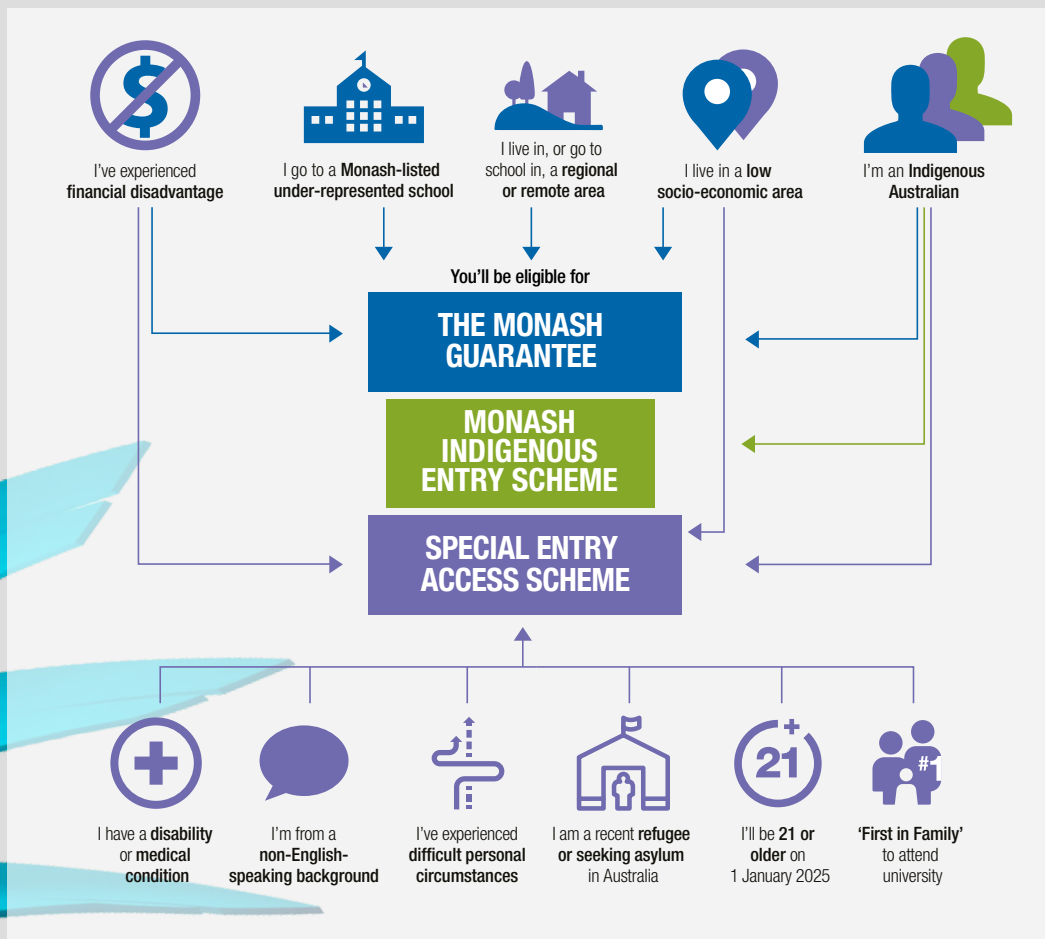
Find the list at [monash.edu/guaranteedentry](https://monash.edu/guaranteedentry)

#### Low socio-economic area

If you live in a low socio-economic area according to census data, you'll be eligible for the Monash Guarantee. Find out if your address qualifies at [monash.edu/seas](https://monash.edu/seas)

#### Regional or remote area

If you live or go to school in a regional or remote area, according to census data, you'll be eligible for the Monash Guarantee. Find out if your address qualifies at [monash.edu/seas](https://monash.edu/seas)



## MONASH INDIGENOUS ENTRY SCHEME

The Indigenous Entry Scheme offers Aboriginal and Torres Strait Islander applicants admission to a range of undergraduate courses with a significantly lower ATAR requirement (achieved ATAR of 50+, higher for some courses).

There are no special classes, extra requirements or time added to the course for students admitted under this entry scheme and students will graduate with the same Monash degree as any other student.

There are also opportunities to transfer into double degrees and into specialist degrees (eg. Bachelor of Law; Bachelor of Engineering).

To be eligible for an offer, you must:

- be of Aboriginal and/or Torres Strait Islander descent;
- achieve an ATAR of at least 50.
- meet the course prerequisites (this information can be found in the VTAC course entry guide);
- complete the VTAC supplementary information form which is available from: [vtac-supp.adm.monash.edu/SupplementaryVTAC](mailto:vtac-supp.adm.monash.edu/SupplementaryVTAC)
- add your preferred Indigenous Entry course as a preference on your VTAC application.

Indigenous students are encouraged to contact the William Cooper Institute for information about studying with Monash University.

✉ [wci-study@monash.edu](mailto:wci-study@monash.edu)

🌐 [monash.edu/indigenous-australians/study](http://monash.edu/indigenous-australians/study)

## SPECIAL ENTRY ACCESS SCHEME (SEAS)

SEAS adjusts your Monash selection rank in recognition of circumstances that may have affected your education. This gives you a better chance of getting an offer for the course you want. You'll receive adjustments that reflect the severity of your circumstances. The adjustments are made to your achieved ATAR. We use this adjusted ATAR during the university selection process.

### Eligibility

To be eligible for SEAS, you must:

- satisfy the criteria for one or more of the SEAS categories:
  - financial disadvantage
  - Indigenous Australian
  - First in Family to attend university
  - live in a low socio-economic area
  - live in a regional or remote location
  - be a recent refugee or seeking asylum in Australia
  - born in a non-English-speaking country and moved to Australia after 1 January 2015
  - experienced difficult personal circumstances
  - disability or medical condition
  - aged 21 or older on 1 January 2025
- be an Australian or New Zealand citizen, an Australian permanent resident, or hold one of the following visas for Australia:
  - Permanent Humanitarian visa
  - Temporary Protection visa
  - Bridging visa A or E
  - Safe Haven Enterprise visa.

You can find more information about the SEAS categories and criteria at [monash.edu/entry-schemes](http://monash.edu/entry-schemes)

# MONASH GUARANTEE (MG) AND INDIGENOUS ENTRY SCHEME (IES) ATARS

COURSE	MG	IES
<b>ART, DESIGN AND ARCHITECTURE</b>		
Architectural Design	70	
Design	70	
Fine Art (Art History and Curating)	70	65
<b>DOUBLE DEGREES</b>		
Architectural Design/Master of Architecture	70	65
Architectural Design/Engineering	76	
Art History and Curating/Arts	70	
Art History and Curating/Business	72	
Art History and Curating/Media Communication	70	
Design/Business	72	
Design/Engineering	76	
Design/Information Technology	70	
Design/Media Communication	70	
Fine Art/Arts	70 RC	
Fine Art/Business	72 RC	
Fine Art/Primary Education	70 RC	
Fine Art/Secondary Education	74 RC	
Fine Art/Information Technology	70 RC	
Fine Art/Media Communication	70 RC	
<b>ARTS, HUMANITIES AND SOCIAL SCIENCES</b>		
Arts	70	50
Criminology	70	
Criminology and Policing	70 RC	
Global Studies	70	
International Relations	70	
Media Communication	70	
Music	70 RC	
Politics, Philosophy and Economics	70 RC	
<b>DOUBLE DEGREES</b>		
Arts/Art History and Curating	70	
Arts/Business	72	
Arts/Commerce	77	
Arts/Criminology	70	
Arts/Education	70 RC	
Arts/Engineering	75	
Arts/Fine Art	70 RC	
Arts/Global Studies	70	
Arts/Health Sciences	70	
Arts/Information Technology	70	
Arts/Laws	85	
Arts/Marketing	70	
Arts/Media Communication	70	
Arts/Music	70 RC	
Arts/Science	73	
Criminology/Information Technology	70	
Global Studies/Commerce	77	
Global Studies/Information Technology	75	
Global Studies/Laws	85	
Global Studies/Science	73	
Media Communication/Art History and Curating	70	
Media Communication/Business	72	
Media Communication/Design	70	
Media Communication/Fine Art	90 RC	
Media Communication/Marketing	70	

COURSE	MG	IES
Music/Commerce	86 RC	
Music/Primary Education	70 RC	
Music/Secondary Education	72 RC	
Music/Laws	85 RC	
Music/Science	75 RC	
Politics, Philosophy and Economics/Arts	70 RC	
Politics, Philosophy and Economics/Commerce	77 RC	
<b>BUSINESS</b>		
Accounting	70	
Actuarial Science	86	
Actuarial Science/Master of Actuarial Science	86	
Banking and Finance	70	
Business	70	50
Business Administration	70	
Economics	76	
Marketing	70	
<b>DOUBLE DEGREES</b>		
Actuarial Science/Commerce	86	
Business/Arts	72	
Business/Art History and Curating	72	
Business/Accounting	72	
Business/Banking and Finance	72	
Business/Marketing	72	
Business/Design	72	
Business/Primary Education	72 RC	
Business/Secondary Education	72 RC	
Business/Fine Art	72 RC	
Business/Information Technology	72	
Business/Media Communication	72	
Commerce/Arts	77	
Commerce/Biomedical Science	85	
Commerce/Computer Science	77	
Commerce/Economics	77	
Commerce/Engineering	77	
Commerce/Finance	77	
Commerce/Global Studies	77	
Commerce/Information Technology	77	
Commerce/Laws	85	
Commerce/Music	86 RC	
Commerce/Politics, Philosophy and Economics	77 RC	
Commerce/Science	76	
Marketing/Arts	72	
Marketing/Media Communication	72	
<b>EDUCATION</b>		
Education – Early childhood and primary education, Primary and secondary education, Primary and secondary health and physical education, Primary and Secondary inclusive education, primary education and Secondary Health/Physical Education	70 RC	
<b>DOUBLE DEGREES</b>		
Primary Education/Arts	70 RC	
Primary Education/Business	72 RC	
Primary Education/Music	70 RC	

RC – a range of criteria is used for selection in addition to your ATAR, such as an audition or folio. You're guaranteed a place if you're successful in the additional selection criteria. Please note that health courses may also have restrictions due to clinical placements. We've reserved some places for Monash Guarantee students who wouldn't otherwise have been offered a place, and have the strongest results across the range of criteria.

COURSE	MG	IES
Primary Education/Science	73 RC	
Primary Education/Fine Art	70 RC	
Secondary Education/Arts	70 RC	
Secondary Education/Business	72 RC	
Secondary Education/Music	72 RC	
Secondary Education/Science	73 RC	
Secondary Education/Fine Art	74 RC	

### ENGINEERING

Engineering – Aerospace, Biomedical, Chemical, Civil, Electrical and Computer Systems, Environmental, Materials, Mechanical, Resources, Robotics and Mechatronics, Software	75	70*
---	----	-----

### DOUBLE DEGREES

Engineering/Architectural Design	76	
Engineering/Arts	75	
Engineering/Biomedical Engineering	80	
Engineering/Biomedical Science	85	
Engineering/Commerce	77	
Engineering/Computer Science	75	
Engineering/Design	76	
Engineering/Master of Engineering	80	
Engineering/Information Technology	75	
Engineering/Laws	85	
Engineering/Pharmaceutical Science	80	
Engineering/Science	75	

### INFORMATION TECHNOLOGY

Computer Science	75	
Computer Science Advanced (Honours)	84	
Information Technology	70	50

### DOUBLE DEGREES

Computer Science/Commerce	77	
Computer Science/Engineering	75	
Computer Science/Science	75	
Information Technology/Arts	70	
Information Technology/Business	72	
Information Technology/Commerce	76	
Information Technology/Criminology	70	
Information Technology/Design	70	
Information Technology/Engineering	75	
Information Technology/Fine Art	70 RC	
Information Technology/Global Studies	75	
Information Technology/Science	75	

### LAWS

Laws	85	
------	----	--

### DOUBLE DEGREES

Laws/Arts	85	
Laws/Biomedical Science	85	
Laws/Commerce	85	
Laws/Computer Science	85	
Laws/Criminology	85	
Laws/Engineering	85	
Laws/Global Studies	85	
Laws/Information Technology	85	
Laws/Music	85 RC	
Laws/Politics, Philosophy and Economics	85 RC	
Laws/Science	85	

COURSE	MG	IES
<b>MEDICINE, NURSING AND HEALTH SCIENCES</b>		

Biomedical Science	85	
Health Sciences	70	50
Medicine	RC	
Nursing	70 RC	50
Nursing Scholars Program	90 RC	
Nursing and Midwifery	75 RC	
Nutrition Science	70	
Nutrition Science Scholars Program	90	
Occupational Therapy	78	50
Paramedicine	74	50
Physiotherapy	93	
Psychology	75	
Public Health	70	50
Radiation Sciences, Radiation Sciences (Informatics)	70	60
Radiography and Medical Imaging (Honours)	93	

### DOUBLE DEGREES

Biomedical Science/Commerce	85	
Biomedical Science/Engineering	85	
Biomedical Science/Law	85	
Biomedical Science/Science	85	
Health Science/Arts	70	

### PHARMACY AND PHARMACEUTICAL SCIENCES

Pharmacy (Honours)	78	
Pharmacy/Master of Pharmacy	78	
Pharmaceutical Science	75	
Pharmaceutical Science Advanced (Honours)	78	

### DOUBLE DEGREES

Pharmaceutical Science/Engineering	80	
------------------------------------	----	--

### SCIENCE

Applied Data Science	75	
Applied Data Science Advanced (Honours)	80	
Science	73	50
Science Advanced – Global Challenges	80 RC	
Science Advanced – Research (Honours)	83	

### DOUBLE DEGREES

Science/Arts	73	
Science/Biomedical Science	85	
Science/Commerce	76	
Science/Computer Science	75	
Science/Education	73 RC	
Science/Engineering	75	
Science/Global Studies	73	
Science/Information Technology	75	
Science/Laws	85	
Science/Music	75 RC	

\*Minimum ATAR inclusive of any SEAS bonuses applied.



## HOW TO APPLY

You must submit a Special Entry Access Scheme (SEAS) application through VTAC and include Monash University in your course preferences to be considered for SEAS adjustments and the Monash Guarantee and Monash University scholarships.

Remember to include any documents VTAC asks you to provide.



## SEAS AND MONASH GUARANTEE ESTIMATE CALCULATOR

Check out our online calculator that estimates your SEAS-adjusted selection rank and provides a list of the courses you may be eligible for. You can also see if you're eligible for the Monash Guarantee.

[monash.edu/seas](https://monash.edu/seas)



**CLICK HERE**  
for more information  
about our programs

---

## MORE INFORMATION

[monash.edu/entry-schemes](https://monash.edu/entry-schemes)

**E:** [future@monash.edu](mailto:future@monash.edu)

**P:** 1800 MONASH (1800 666 274)

Monash University reserves the right to alter information, procedures, fees and regulations contained in this document. Please check the Monash University website for updates: [monash.edu](https://monash.edu)  
All information reflects prescriptions, policy and practice in force at time of publication. Published July 2024. Produced by University Marketing, Admissions and Communications, Monash University. Job 24-ASD-2695.

CRICOS provider: Monash University 00008C.

## ACKNOWLEDGEMENT OF COUNTRY

Monash University recognises that its Australian campuses are located on the unceded lands of the people of the Kulin Nations, and pays its respects to their Elders, past and present.