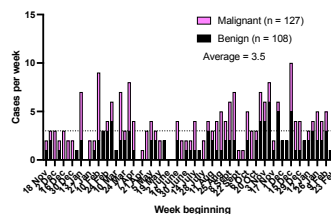
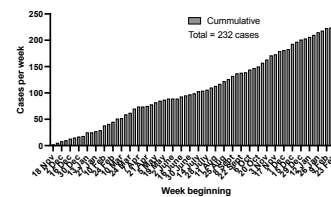


Dear collaborators, partners, and members of the MoLBi community,

March has been another exciting and productive month for the Monash Live-Biobanking (MoLBi) platform, marked by continued expansion of our biospecimen collection, the launch of the MoLBi Student Academy, and growing engagement across research programs within Monash and beyond.

We are delighted to share that the MoLBi platform is now approaching **250 enrolled cases**, with an average recruitment rate of nearly **4 patients per week over the past 2 months**. This milestone reflects the remarkable teamwork behind the program. This time, we would like to acknowledge the dedication of our neurosurgical nursing and theatre teams, research coordinators, and animal facility colleagues, whose coordinated efforts make the capture and processing of these precious tumour biospecimens possible. Their contributions continue to ensure that MoLBi remains a truly clinically embedded translational research platform.



A major highlight this month was the formal launch of the **MoLBi Student Academy** on 10th March. The Academy has been established to support the development of medical students, under- and post-graduate trainees, and early career researchers working with clinically annotated fresh tumour specimens across the MoLBi network. The inaugural session featured student presentations spanning a diverse range of translational research themes. **Yoseph Molano** presented work investigating the effects of the PRMT5 inhibitor on MTAP-deleted glioblastoma growth in the CAM tumour model. **Chanumi de Zoysa** introduced her project on humanising egg-based glioblastoma tumour systems to improve translational modelling. **Huu Minh Liem Le** presented an artificial intelligence-driven genomic integration framework for precision glioma management, and **Ashray Rajagopalan** outlined transcriptomic approaches to predicting treatment response in pancreatic adenocarcinoma. Together, these projects reflect the breadth of discovery enabled by MoLBi and highlight the importance of nurturing the next generation of clinician-scientists and translational researchers.

This month also marked an important milestone in our expanding collaborative research network, with the first fresh tumour specimen successfully provided to Dr Rodney Luwor, Melbourne University, to support studies investigating immune remodelling within the brain tumour microenvironment. As Dr Luwor describes: *“This project aims to further our understanding of how brain tumour cells ‘trick’ anti-tumour immune cells to turn into pro-tumour immune cells that help the brain tumour to progress. Our research aims to reverse the effects of pro-tumour immune cells extracted from live, freshly resected human brain cancers using novel drugs that will make the brain tumour more vulnerable to attack and death.”* This work exemplifies how access to fresh, clinically integrated tumour material through MoLBi is enabling new avenues of mechanistic discovery with direct translational potential.



MoLBi was also featured at the 5th Monash Haematology Research Retreat held at RACV Healesville, where the platform was introduced to a broader community of clinician-scientists working across malignant haematology and cancer immunology. It was a pleasure to share MoLBi’s progress with colleagues including Professor Stephen Opat, Cancer Program Director at Monash Health; Professor Jake Shortt, Clinical Director of Haematology Services at Monash Health; and Professor Liz Hartland, Director and Chief Executive Officer of the Hudson Institute. These interactions continue to strengthen institutional partnerships and create new opportunities for collaborative translational research.



As MoLBi approaches another major milestone in participant recruitment, we remain focused on expanding access to fresh tumour specimens, strengthening interdisciplinary collaborations, and accelerating discovery pipelines that will ultimately translate into improved therapeutic strategies for patients with difficult-to-treat cancers.

Thank you, as always, to our clinicians, researchers, students, consumers, and partners whose commitment continues to drive the success of the MoLBi platform.

With best wishes,



Dr Gwo Yaw Ho
 Founder and Chair, Monash Live-Biobanking



Professor Justin Moore
 Director of Neurosurgery, Monash Health