

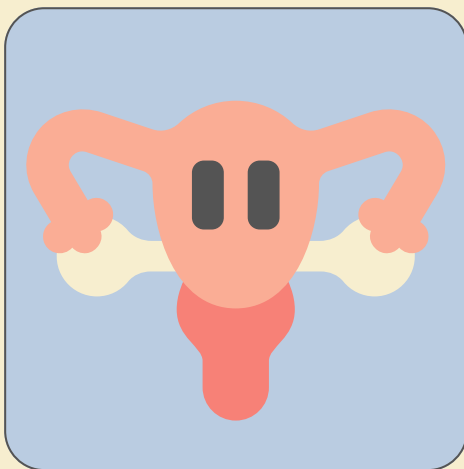
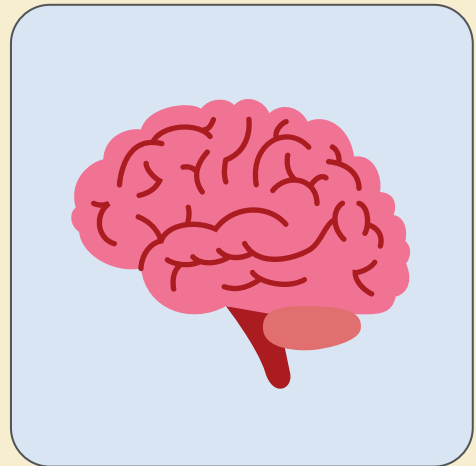
ADHD IN MENOPAUSE

We are looking for participants to take part in our study investigating ADHD and hormones

Participation will involve one to three sessions at The Alfred to explore different tasks assessing thinking skills, and additional opportunities to measure hormones and brain activity (MRI).

You may be eligible to participate if you are:

- **Perimenopausal** (either with an ADHD diagnosis or no ADHD symptoms); **OR**
- **Regularly menstruating** (i.e. not menopausal) and are diagnosed with ADHD



Scan the QR or visit the link to learn more and express your interest



<https://redcap.link/kofk494t>

Project ID Number: 114958