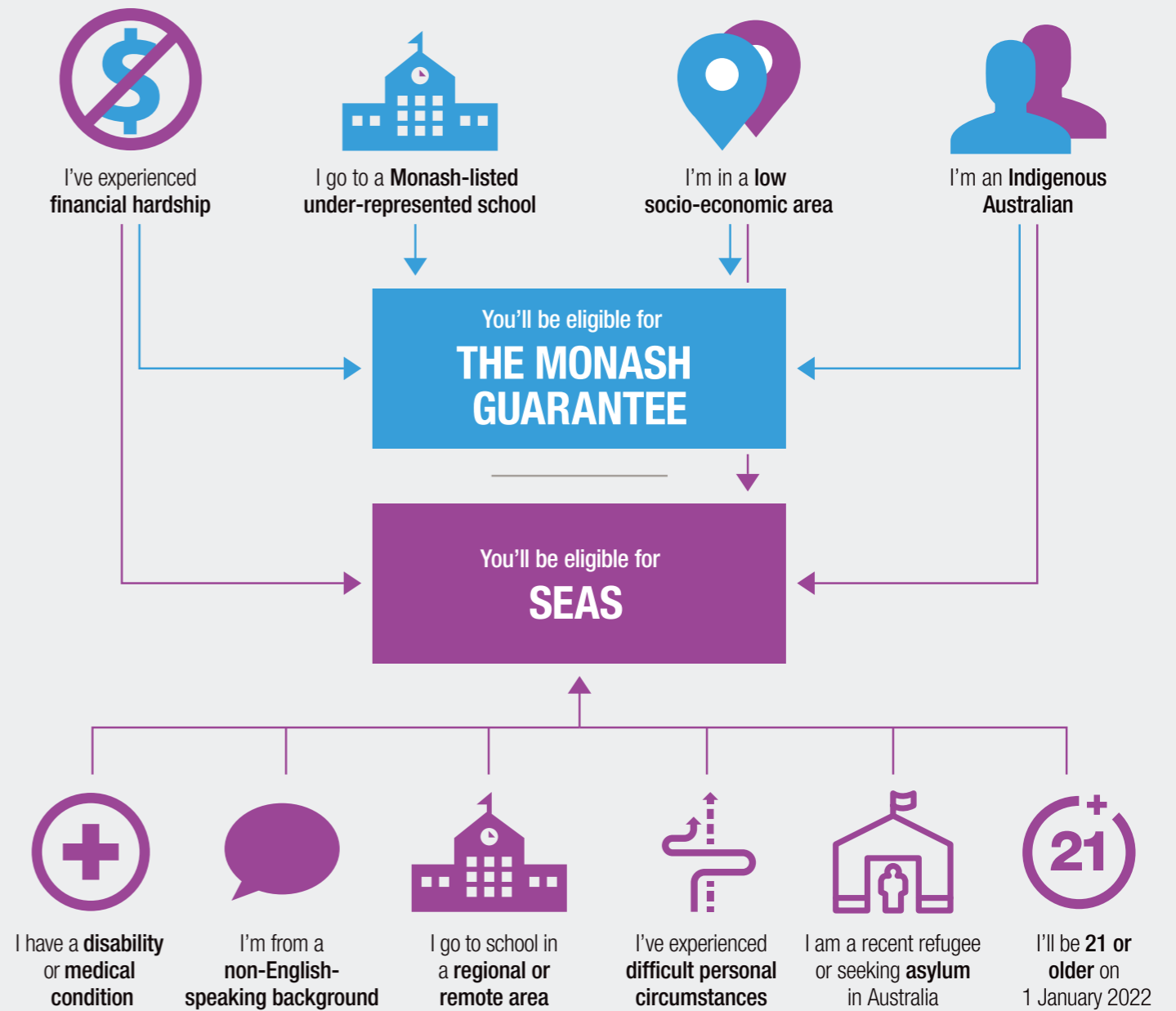


**MONASH
GUARANTEE AND
SPECIAL ENTRY
ACCESS SCHEME
2022**



**WE CAN CHANGE
A NUMBER,
SO YOU CAN
CHANGE YOUR LIFE**



At Monash, we know that your ATAR might not accurately reflect your abilities. Life can be a bumpy road, and can sometimes get in the way of your academic achievements.

No matter the circumstances, we recognise and support talent. That's why we offer two schemes – the Monash Guarantee and the Special Entry Access Scheme (SEAS), that can help you enter your preferred course by considering your life circumstances.

If you're inspired by big ideas and fired up with ambition, you'll fit right in at Monash. Your dream university and course may just be in reach.

Two schemes – what's the difference?

In simple terms, the Monash Guarantee promises entry at a lower ATAR, while the Special Entry Access Scheme (SEAS) adjusts your selection rank. Having both schemes means that we can consider as many students as possible. In both cases, you must still meet any other requirements your course might have. For example, you must pass the UCAT to enter medicine, and audition to enter music.

Which scheme am I eligible for?

You don't have to choose between them – depending on your situation and background, you could be eligible for one or both. Most Victorian universities use SEAS, while the Monash Guarantee is specific to Monash University. All you need to do is apply for SEAS through VTAC, and leave the rest to VTAC and us.

Special Entry Access Scheme (SEAS)

SEAS adjusts your Monash selection rank in recognition of circumstances that may have affected your education. This gives you a better chance of getting an offer for the course you want. You'll receive adjustments that reflect the severity of your circumstances. The adjustments are made to your achieved ATAR which then produces your selection rank. We'll use your selection rank during the selection process.

This year, the "difficult circumstances" category will take into account the COVID-19 crisis and the 2020 summer bushfires. Disadvantages to your education may include:

- unreliable internet access
- lack of suitable devices for online learning
- lack of access to practical requirements for specific subjects
- bushfire evacuations
- school disruptions
- property damage, etc.

Eligibility

To be eligible for SEAS, you must:

- satisfy the criteria for one or more of the SEAS categories:
 - financial disadvantage
 - Indigenous Australian
 - live in a low socio-economic area
 - attend a school in a regional or remote location
 - a recent refugee or seeking asylum in Australia
 - born in a non-English-speaking country and moved to Australia after 1 January 2016
 - experienced difficult personal circumstances
 - disability or medical condition
 - aged 21 or older on 1 January 2022
- be an Australian or New Zealand citizen, an Australian permanent resident, or hold one of the following visas for Australia:
 - Permanent Humanitarian visa
 - Temporary Protection visa
 - Bridging visa A or E
 - Safe Haven Enterprise visa.

You can find more information about the SEAS categories and criteria at monash.edu/entry-schemes

THE MONASH GUARANTEE

You could be eligible for the Monash Guarantee if you:

- have experienced financial disadvantage
- are an Indigenous Australian
- attend a Monash-listed under-represented school
- live in a low socio-economic area.

How it works

Every Monash course has a Monash Guarantee ATAR. You'll find them listed within the course pages and in the table opposite. For most courses, if you meet the Monash Guarantee criteria, achieve or exceed the Monash Guarantee ATAR, and complete or meet all course prerequisites, you're guaranteed a place in that course. There are some exceptions, which are explained in the table.

Eligibility

To be eligible for the Monash Guarantee, you must:

- be studying an Australian Year 12 or International Baccalaureate in 2021
- meet or exceed the Monash Guarantee ATAR for your preferred course
- satisfy all course-specific prerequisites and requirements, such as the UCAT, a portfolio, interview or audition
- be an Australian or New Zealand citizen, or holder of an Australian permanent resident or permanent humanitarian visa
- demonstrate that you've experienced financial disadvantage, currently attend a Monash-listed under-represented school, are an Indigenous Australian, or live in a low socio-economic area.

Financial disadvantage

To demonstrate financial disadvantage, you must have documents that prove at least one of the following:

- You receive an income-tested Centrelink benefit (e.g. Youth allowance, Abstudy, Health Care Card)
- Your parents/guardians receive an income-tested Centrelink benefit (e.g. Family Tax Benefit A)
- You and/or your family are facing financial hardship or excessive financial obligations (e.g. living on a farm suffering from drought or floods).

Indigenous Australian

Our diverse student community includes Aboriginals and Torres Strait Islanders. If you're an Indigenous Australian and you meet the required ATAR, you'll be eligible for the Monash Guarantee.

Under-represented school

Monash has identified more than 1000 schools across Australia as being under-represented at university. If you attend one of these schools and meet the required ATAR, you'll be eligible for the Monash Guarantee. Find the list at monash.edu/guaranteedentry

Low socio-economic area

If you live in a low socio-economic area and meet the required ATAR, you'll be eligible for the Monash Guarantee. Find out if your address qualifies at monash.edu/seas

MONASH GUARANTEE ATARS

COURSE GUARANTEE		ATAR
ART, DESIGN AND ARCHITECTURE		
Architectural Design		75
Design		70
Fine Art	Fine Art	70 RC
	Art History and Curating	70
DOUBLE DEGREES		
Architectural Design/Engineering		86
Art History and Curating/Arts		75
Art History and Curating/Business		75
Art History and Curating/Media Communication		75
Design/Business		78
Design/Engineering		86
Design/Information Technology		78
Design/Media Communication		78
Fine Art/Arts		75 RC
Fine Art/Business		75 RC
Fine Art/Education		77 RC
Fine Art/Information Technology		75 RC
Fine Art/Media Communication		75 RC
ARTS, HUMANITIES AND SOCIAL SCIENCES		
Arts		70
Criminology		70
Global Studies		80
Media Communication		70
Music		70 RC
Politics, Philosophy and Economics		80 RC
DOUBLE DEGREES		
Arts/Business		75
Arts/Business Administration		75
Arts/Commerce		86
Arts/Criminology		75
Arts/Education		77 RC
Arts/Engineering		86
Arts/Fine Art		75 RC
Arts/Art History and Curating		75
Arts/Information Technology		75
Arts/Laws		94
Arts/Marketing		75
Arts/Music		75 RC
Arts/Science		75
Criminology/Information Technology		75
Global Studies/Commerce		86
Global Studies/Information Technology		85
Global Studies/Laws		94
Global Studies/Science		85
Media Communication/Art History and Curating		75
Media Communication/Business		75
Media Communication/Business Administration		75
Media Communication/Design		78
Media Communication/Marketing		75
Music/Commerce		86 RC
Music/Education		77 RC
Music/Laws		94 RC
Music/Science		75 RC
Politics, Philosophy and Economics/Arts		80 RC
BUSINESS		
Accounting		75
Actuarial Science		86
Banking and Finance		75

Business		75
Business Administration		70
Commerce		86
Economics		86
Finance		86
International Business		75
Marketing		75
BUSINESS CONT'D		
DOUBLE DEGREES		
Actuarial Science/Commerce		86
Business/Arts		75
Business/Art History and Curating		75
Business/Accounting		75
Business/Banking and Finance		75
Business/International Business		75
Business/Marketing		75
Business/Design		78
Business/Education		77 RC
Business/Fine Art		75 RC
Business/Information Technology		75
Business/Media Communication		75
Business Administration/Arts		75
Business Administration/Media Communication		75
Commerce/Arts		86
Commerce/Biomedical Science		88
Commerce/Computer Science		88
Commerce/Economics		86
Commerce/Engineering		88
Commerce/Finance		86
Commerce/Information Technology		86
Commerce/Laws		94
Commerce/Music		86 RC
Commerce/Science		86
International Business/Arts		75
Marketing/Arts		75
Marketing/Media Communication		75
EDUCATION		
Education – Early years and primary education, Primary and secondary education, Primary and secondary health and physical education, Primary and Secondary inclusive education, primary education, Secondary health and physical education.		70 RC
DOUBLE DEGREES		
Primary Education/Arts		77 RC
Primary Education/Business		77 RC
Primary Education/Music		77 RC
Primary Education/Science		77 RC
Primary Education/Fine Art		77 RC
Secondary Education/Arts		77 RC
Secondary Education/Business		77 RC
Secondary Education/Music		77 RC
Secondary Education/Science		77 RC
Secondary Education/Fine Art		77 RC
ENGINEERING		
Engineering – Aerospace, Biomedical, Chemical, Civil, Electrical and Computer Systems, Environmental, Materials, Mechanical, Resources, Robotics and Mechatronics, Software		86
DOUBLE DEGREES		
Engineering/Architectural Design		86
Engineering/Arts		86
Engineering/Biomedical Science		88
Engineering/Commerce		88
Engineering/Computer Science		88
Engineering/Design		86
Engineering/Information Technology		86
Engineering/Laws		94
Engineering/Pharmaceutical Science		86
Engineering/Science		86
INFORMATION TECHNOLOGY		
Computer Science		80

Computer Science Advanced		90
Information Technology		75
DOUBLE DEGREES		
Computer Science/Commerce		88
Computer Science/Engineering		88
Computer Science/Science		80
Information Technology/Arts		75
Information Technology/Business		75
Information Technology/Commerce		86
Information Technology/Criminology		75
Information Technology/Design		78
Information Technology/Engineering		86
Information Technology/Fine Art		75 RC
Information Technology/Global Studies		85
Information Technology/Science		75
LAWS		
Laws		94
DOUBLE DEGREES		
Laws/Arts		94
Laws/Biomedical Science		94
Laws/Commerce		94
Laws/Computer Science		94
Laws/Criminology		94
Laws/Engineering		94
Laws/Global Studies		94
Laws/Information Technology		94
Laws/Music		94 RC
Laws/Politics, Philosophy and Economics		94 RC
Laws/Science		94
MEDICINE, NURSING AND HEALTH SCIENCES		
Biomedical Science		85
Health Sciences		70
Medicine		RC
Nursing		70 RC
Nursing and Midwifery		82 RC
Nutrition Science		70
Occupational Therapy		78
Paramedicine		75
Physiotherapy		93
Psychology		78
Public Health		75
Radiation Sciences, Radiation Sciences (Informatics)		80
Radiography and Medical Imaging		93
PHARMACY AND PHARMACEUTICAL SCIENCES		
Pharmacy		84
Pharmacy/Master of Pharmacy		84
Pharmaceutical Science		75
Pharmaceutical Science Advanced		84
DOUBLE DEGREES		
Pharmaceutical Science/Engineering		86
SCIENCE		
Applied Data Science		75
Applied Data Science Advanced		90
Science		75
Science Advanced – Global Challenges		85 RC
Science Advanced – Research		90
DOUBLE DEGREES		
Science/Arts		75
Science/Biomedical Science		85
Science/Commerce		86
Science/Computer Science		80
Science/Education		77 RC
Science/Engineering		86
Science/Global Studies		85
Science/Information Technology		75
Science/Laws		94
Science/Music		75 RC

The Monash Guarantee doesn't apply to the Scholars Programs or Pathways to Law.

RC – a range of criteria is used for selection in addition to your ATAR, such as an audition or folio. You're guaranteed a place if you're successful in the additional selection criteria. Please note that health courses may also have restrictions due to clinical placements. We've reserved some places for Monash Guarantee students who wouldn't otherwise have been offered a place, and have the strongest results across the range of criteria.

FREQUENTLY ASKED QUESTIONS

Do I have to put my Monash Guarantee course as my first preference?

You should always put the course that you most want to study as your first preference. If a Monash Guarantee course is on your preference list but not first, you'll only receive an offer for it if you don't get offered a place for a course higher on your list.

We can only offer you a place through the Monash Guarantee or SEAS if the relevant course is included in your preference list. We consider Monash Guarantee course preferences for Round one offers.

Will my SEAS-adjusted selection rank be used for the Monash Guarantee?

No. The Monash Guarantee provides guaranteed entry based on your achieved ATAR – the original ATAR you receive when results are released, before any SEAS adjustments are made.

How do I know if I live in a low socio-economic area?

You can find out if your address qualifies at monash.edu/seas

Eligibility is according to the Australian Bureau of Statistics Socio-Economic Indexes for Areas.

Do I still have to meet prerequisites for my course if I'm eligible for the Monash Guarantee?

Yes. You must still meet all course prerequisites (e.g. minimum study scores in particular subjects) and extra requirements (such as the UCAT, folio or audition) to be eligible for a course offer through the Monash Guarantee.

Which campus can I study at if I enter via the Monash Guarantee?

The Monash Guarantee ATAR applies to every Australian campus on which the course is taught. Visit monash.edu/study to find out where the courses you're interested in are taught.

What if I don't meet the Monash Guarantee ATAR?

You'll still be considered for entry through the normal selection process and your SEAS-adjusted selection rank.

What adjustments will I get, and how is this determined?

Your circumstances are considered individually and adjustments are made based on the information you provide in your SEAS application. Our SEAS calculator can help you estimate your Monash selection rank (visit monash.edu/seas). But remember, this is just an estimate.

When will I know if I'm guaranteed a course offer through the Monash Guarantee?

We'll send you a confirmation email in December if you meet the eligibility criteria and have a Monash course listed in your preferences. If you achieve the required Monash Guarantee ATAR and meet all course requirements, you'll then receive your official course offer.

HOW TO APPLY

You must submit a Special Entry Access Scheme (SEAS) application through VTAC and include Monash University in your course preferences to be considered for SEAS adjustments and the Monash Guarantee.

You should also submit a scholarship application through VTAC to be eligible for scholarships associated with the Monash Guarantee. Remember to include any documents VTAC asks you to provide.



SEAS AND MONASH GUARANTEE ESTIMATE CALCULATOR

Check out our online calculator that estimates your SEAS-adjusted selection rank and provides a list of the courses you may be eligible for. You can also see if you're eligible for the Monash Guarantee.

monash.edu/seas

MORE INFORMATION

monash.edu/entry-schemes

Email: future@monash.edu

Phone: 1800 MONASH (1800 666 274)

Monash University reserves the right to alter information, procedures, fees and regulations contained in this document. Please check the Monash University website for updates: monash.edu
All information reflects prescriptions, policy and practice in force at time of publication. Published April 2021.
Produced by Strategic Marketing and Communications, Monash University. Job 21-A61804.

CRICOS provider: Monash University 00008C.