

M O N A S H
U N I V E R S I T Y

Annual Report 1990



M O N A S H U N I V E R S I T Y



AUSTRALIA

*In accordance with
Section 41 of
the Monash University Act
1958, as amended, I
submit the
report of the Council
for 1990.*

*For and on
behalf of the Council
G H Lush
Chancellor*

Report of the Council of Monash University for the period 1.1.1990 to 31.12.1990

Monash University
Annual Report 1990
ISSN 0814-8597

Published by Monash University
Clayton Victoria Australia 3168

Telephone (03) 565 4000
ISD (61) (3) 565 4000
Telex AA32691
Fax (61) (3) 565 4007

Printed by Brown Prior Anderson
Burwood Victoria

Vice-Chancellor's statement 01

Establishment 03; Objectives, functions, powers and duties 03; University services 03; Shared policy responsibilities 04; Administrative structure 04; Principal offices 07; Publications 07; Companies, joint ventures and trusts 08; Reporting lines for administrative responsibility 09

Operational objectives 10; Factors affecting achievement of operational objectives 13; Major changes 13; Major external reviews 14; Summary of operations: New courses offered in 1990 14; Other initiatives 14; Major works 14; Major research activities 15; Significant activities and achievements 17; Major promotional activities 19; Legislation 21; Regulations 23; Persons employed 23; Pecuniary interests 24; Overseas visits 24; Occupational health and safety 24; Industrial relations 25; Freedom of information 25; Major committees (external) 25; Prices, rates and levies 25; Major financial and performance statistics 26

Consolidated financial statements of the University and related entities for the year ended 31 December 1990 27; Auditor-General's certification as to audit (consolidated) 40

1 Staff numbers before and after institutional mergers 42; 2.1 Institutional mergers – enrolments and student load 42; 2.2 Past course completions 42; 2.3 Enrolments by degree and faculty 43; 2.4 Student load by course 45; 3 Graduates of the University 1990 46

General information

Review of operations

Audited financial statements

Appendices to review of operations

For Monash University, 1990 was a year of momentous change. It was accompanied by a degree of turbulence and a significant number of noteworthy successes.

Following the signing of Heads of Agreement with the former Chisholm Institute of Technology and the Gippsland Institute of Advanced Education in 1989, the *Monash University Act* was amended to create a merged institution on 1 July 1990. With respect to University governance an interim joint council was formed for one year, to be replaced in 1991 by a newly constituted council as defined in the *Monash University (Chisholm and Gippsland) Act 1990*. The Professorial Board was replaced with an expanded interim Academic Board, which has recently completed a review into its future composition.

Internal structural changes were achieved through the establishment of a merger implementation committee and a series of working parties of this committee. One outcome was the new internal structure of ten faculties across the three metropolitan campuses (Caulfield, Clayton and Frankston), the Monash University College Gippsland, and the Distance Education Centre located at Gippsland but servicing the whole University. The ten faculties of the University are Arts, Business, Computing and Information Technology, Economics Commerce and Management, Education, Engineering, Law, Medicine, Professional Studies and Science.

As a result of the merger, all staff and students of the former Chisholm Institute of Technology, the former Gippsland Institute of Advanced Education and the former Monash University became staff and students of the new Monash University, and all degrees and diplomas were those of the new Monash University.

The merger ensures that Monash can face the future with great confidence. With four campuses situated in one of the few growth corridors in Victoria – the outer south-east of the metropolitan area, Gippsland, Mornington and Westernport – Monash will be well buffered against the demographic downturn that is about to occur (a decline of 2.5 percent per year of the school leaver age population through the mid and late 1990s).

The degree of diversity provided by the merger coupled with the University's traditional standards of quality, place the 'greater' Monash University in a sound position to sustain enrolments in the face of rapid fluctuations in the areas of undergraduate student demand. Early indications of 1991 undergraduate demand confirm this expectation.

Most of the turbulence associated with the merger is now dissipated. Change is always difficult, and the merger required many adjustments. Changes in long established structures, such as Council, Professorial Board and faculties have not been achieved with near universal support. Some initial suspicions between staff from different cultures are now well behind us. The 'greater' Monash University is now widely viewed as the success story of the national restructuring of higher education. This has only been achieved through a great deal of work and tolerance by academic and general staff at all levels.

In 1990 the University's research activities were supported by the central disbursement of internal funds and by success in attracting awards from external granting bodies. The Monash development fund of \$1.95M was established this year to assist academic staff in initiating research activities which may attract further external funding, while the Monash research fund allocated \$532K to support 199 competitively reviewed research projects which generally fell below the lower funding limits of the ARC, NH&MRC and other major granting bodies. This fund also awarded 105 travel grants amounting to \$75K to support attendance by academic staff at international conferences. The University received approximately \$23.8M from external granting bodies to support research in 1990. Substantial funding was attracted from major Commonwealth competitive granting bodies including the ARC, N&MRC and Industry Research Development Board grants (GIRD). Included were:

- a total of 101 large ARC grants with a value of \$4.682M, which represented a 47 per cent increase of ARC funds from the previous year. Furthermore, the University's performance and success rate was 37 per cent compared with the national success rate of 31 per cent.



• The University received funding of \$5.457M for 101 competing and continuing NH&MRC project grants and \$156.6K for five NH&MRC equipment grants.

• Since the GIRD scheme was introduced in 1986, the University has received eight grants totalling \$6.246M, and this represents the largest allocation of GIRD grants to any single university. The GIRD Scheme grants have involved the formation of research partnerships with research groups from the University, industry and government research laboratories.

A memorandum of understanding between the University and seven local CSIRO divisions was signed in September 1990, thereby facilitating closer collaboration in research programs, teaching, large equipment usage and supervision of postgraduate students on the University campuses and in the CSIRO divisions.

Regulation 7(a)

Establishment

Monash University was established by an Act of the Victorian Parliament on 15 April, 1958. It is a body politic and corporate known as 'Monash University', it has perpetual succession, a common seal and is capable in law of suing and being sued.

Objectives

Regulation 7(b)

Objectives, functions, powers and duties

The objectives of the University, as stated in Section 5 of Division 1 of the *Monash University Act* are:

- to provide facilities for study and education and to give instruction and training to all such branches of learning as may from time to time be prescribed by the Statutes, including, without limiting the generality of the foregoing, Pure Science, Applied Science and Technology, Engineering, Agriculture, Veterinary Science, Medicine, Law, Arts, Letters, Education and Commerce;
- to aid by research and other means the advancement of knowledge and its practical application to primary and secondary industry and commerce;
- to confer after examination the several degrees of bachelor, master and doctor and such other degrees and diplomas as are prescribed by the Statutes but so that the standard for graduation in the University shall be at least as high as prevails in the University of Melbourne; and
- to provide facilities for University education throughout Victoria by the affiliation of existing educational institutions to the University, by the creation of new educational institutions to be affiliated to the University, by the establishment of tutorial classes, correspondence classes, University extension classes and vacation classes and by such other means as the Council deems appropriate –

and in the giving of instruction and training in any branch of learning the University shall aim to foster a desire for learning and culture and for a knowledge of the social and cultural as well as the technical and practical aspects of that branch of learning and an understanding of its relation to the whole field of human life and knowledge.

Powers and duties

Regulation 7(b)

The governing authority of the University is the Council, the constitution of which is set out in Division 2 of the Act. The *Monash University (Chisholm and Gippsland) Act 1990* came into force on 1 July 1990 and substituted in Division 2 of the Act a new constitution of Council to take effect on 1 July 1991. The latter Act provided for a transitional council to hold office for twelve months, and defined its membership. The Council manages and supervises the affairs of the University and is advised by its subordinate standing committees, other boards and committees, the Vice-Chancellor and senior officers of the University.

Regulation 7(c)

University services

The University provides post-secondary education and study facilities primarily to the Victorian community. The ten faculties located within the Monash campuses at Clayton, Caulfield and Frankston (Arts, Business, Computing and Information Technology, Economics Commerce and Management, Education, Engineering, Law, Medicine, Professional Studies and Science) offer undergraduate and postgraduate degrees. In addition to the faculties there are centres which express the research interests of staff members and provide a specialised nuclei for postgraduate and some undergraduate study. Many of these act as a focus for interdisciplinary research. The Monash University College Gippsland has a further seven schools located on its campus. The work

of the University is expanded and supported by affiliated institutions which cooperate in various ways with teaching and research programs at Monash.

*Shared policy
responsibilities*

Regulation 7(d)

The University operates in collaboration with the Commonwealth Government through DEET and with the State Government Ministry of Education and VPSEC, in the funding, planning and administration of its work.

*Administrative
structure*

Membership of Council 1990

Regulation 7(e)

Between 1 July 1990 and 30 June 1991 the following members constitute a transitional council of the enlarged University in accordance with the *Monash University (Chisholm and Gippsland) Act 1990*.

Appointed by the Governor in Council

Members of the Parliament of Victoria

The Hon. James Vincent Chester Guest MA Oxon. MBA Melb. Barrister-at-Law of Lincoln's Inn Barrister-at-Law (Vic.) MLC*
Gerard Marshall Vaughan BE MEngSc PhD Mon. DipEd S.C.V. ARMIT ARACI MP*
Thomas William Wallace MP*

Representing industrial, commercial, educational and community interests

Dorothy Rae Anstee SRN SCM InfWelfCert DipWard&UnitMgt
DipNAdmin FCNA
Judy Arndt BArch Melb. MA LaT. ARAIA
James Arnold Hancock OBE BCom Melb. FCA AASA*
Maria Gwendolene Keys BA Syd. MACS
Geoffrey Alistair Knights MA PhD Cantab.
Jan Eric Kolm AO EngChem PragueTech.Uni. HonDSc Melb. FRACI FAIM
FTS*
Rachelle Ann Lewitan BA LLB (Hons) Melb.*
Helen Marion Nugent BA PhD Qld MBA Harv.*
Donald Henry Peebles
Robert Graham Rutter BCom Melb. FCA
Nigel Wood BEc N.E.*

Elected by the graduates of the University

Anthony Henry May BEc LLB*
Kay Christine Lesley Patterson BA Syd. PhD DipEd MAPsS*

Elected by the faculties

Faculty of Arts

Alan George Lewers Shaw AO BA Melb. MA Oxon. FASSA FAHA*

Faculty of Economics Commerce and Management

June Margaret Hearn MA PhD Melb.*

Faculty of Education

Winifred McDonnell BA MEd DipEd FACE*

Faculty of Engineering

Robert John Neil Kinsman BMechE Melb. CEng FIMechE MAustIMM*

Faculty of Law

The Hon. Mr Justice Robert Clive Tadgell LLB Melb.*

Faculty of Medicine

Anthony Robert Moore MB MS Melb. MA Cantab. FRACS FACRM (until 10 October 1990)*

Faculty of Science

Hugh Alexander Grayson FMTC CChem FRACI FIDA FAIM*

Elected by the professors

John Newsome Crossley MA DPhil Oxon.*

William Henry Melbourne BE Syd. PhD DIC Lond. FIEAust FRAeS FRGS*

Clive Trevor Probyn MA Virginia BA Phd Nott.*

Bruce Oswald West BSc Adel. PhD Adel. and Cantab. FRACI (until 17 December 1990)*

Elected by the Academic Board of the former Chisholm Institute of Technology

Richard John Snedden BA LLB Melb. BEd MACE

James Wingate MA Glas. DipArt G.S.A. ATC J.C.E.

Elected by the full-time academic staff of the former Chisholm Institute of Technology

Arthur Ernest Crook BA Qld MA Melb. MAPsS

Richard Lewis Whyte BA Melb. BEd TPTC

Elected by teaching staff other than professors

Stella Ann Crossley MA DPhil Oxon.*

William Anthony Howard MCom Melb. PhD C'nell*

Jennifer Strauss BA Melb.*

Ex officio

Chancellor

The Hon. Sir George Hermann Lush LLM Melb.*

Vice-Chancellor

Malcolm Ian Logan BA PhD Melb. DipEd Syd. FASSA*

Appointed by the Minister for Education

Ronald George Ritchie BMechE DipEd Melb. DipMechE Caulfield T.C.
MAdmin FIEAust MACE*

Elected by the Council of the former Gippsland Institute of Advanced Education

Crofton Lee Hatsell DipCE DipTCP FIEAust

Dennis John Shore BE MEngSc N.S.W. MIEAust

Co-opted members

Jennifer Ann Chandler BBus V.I.C. AFMI
Clive Keith Coogan AM MSc Syd. PhD Brist. FAIP FRSA
Peter Francis Cutter BCom Melb. MEd MACE
William Austin Kricker BSc BE Syd. MBA N.S.W. FAIM FIDA FIEAust
(from 5 November 1990)
Linda Joy Lawrie BA DipEd
Joan Melville McPhee MCom Melb. ACTT
Dorothy Ruth Pizzey BA BEd Melb. FACE*
Paul Ramler DipBus HonMBA C.I.T. ACTT
Lionel Edward Ward BAgSc W.Aust. MSc PhD Calif.
As at 1 January 1991 there were five vacancies for co-opted members.

Deans of faculties

Peter LePoer Darvall BCE Melb. MS Ohio State MSE MA PhD Prin. DipEd
FIEAust*
Charles Robert Williams BCL Oxon. BJuris LLB(Hons) Barrister-at-Law
(Vic.)*

Elected by non-academic staff

John Charles Blyth BAppSc Melb.
Douglas Raymond Ellis BEc ARMIT*
Paul Kenneth Rodan BA W.Aust. MA Qld PhD

Elected by the students in the university

James Leslie Backwell*
David Jenkins
Sally Moxham
Barbara Dawn Murray MA*
Raymond Victor Scott (until 17 December 1990)*
Barry Colin Yau

* Member of Monash University Council before 1 July 1990

Senior officers

Regulation 7(e)

Visitor

His Excellency Dr Davis McCaughey, Governor of Victoria

Chancellor

The Hon. Sir George Hermann Lush LLM Melb.

Deputy Chancellors

James Arnold Hancock OBE BCom Melb. FCA AASA
Geoffrey Alistair Knights MA PhD Cantab. (from 5 November 1990)

Vice-Chancellor

Malcolm Ian Logan BA PhD DipEd Syd. FASSA

Deputy Vice-Chancellors

John Anthony Hay BA PhD W.Aust. MA Cantab. FACE
Ian James Polmear BMetE MSc DEng Melb. FTS FIM FIEAust
Geoffrey Norman Vaughan MSc Syd. PhD Melb. FRACI FPS FSHPA MPSGB
(from 1 July 1990)

*Pro Vice-Chancellor and Chief Executive Officer of Monash University College
Gippsland*

Thomas Kennedy BSc PhD Glas. GradDipEd CChem FRIC FAIM ARACI
AIMM MACE (from 1 July 1990)

Registrar

Anthony Langley Pritchard BSc DipEd Melb. BEd Qld

Comptroller

Peter Brian Wade BCom (Hons) MA Melb. FASA

Regulation 7(f)

Principal offices

Office of the Vice-Chancellor
Monash University – Clayton campus
Wellington Road
Clayton 3168
Telephone: (03) 565 2000

Monash City Office
Cnr Exhibition Street and Flinders Lane
Melbourne 3000
Telephone: (03) 650 9140

Campus Coordinator
Monash University – Caulfield campus
900 Dandenong Road
Caulfield East 3145
Telephone: (03) 573 2071

Campus Coordinator
Monash University – Frankston campus
McMahons Road
Frankston 3199
Telephone: (03) 784 4152

Chief Executive Officer – Gippsland
Monash University College Gippsland
Switchback Road
Churchill 3842
Telephone: (051) 226 211

Regulation 7(g)

Publications

The University Calendar, volumes one and two, contains information on the operations and governance of the University and details on courses and subjects offered. The Research Report, published annually, records the research being conducted at Monash. Copies of these publications may be purchased from the Monash University bookshop or by application to the Registrar, Monash University, Clayton, 3168, Australia.

The public affairs office, which replaced the former information office, publishes a monthly newspaper, *Montage*, and an occasional single sheet flyer, the V-C's Desk. A weekly newsheet, *Sound*, published throughout the year, will be replaced by a new publication, *Etcetera*, in 1991. These publications are distributed to all staff on all campuses.

Monash University College Gippsland produces annually a handbook which contains information on the operation and governance of the college, together with details of all courses and units offered. The college produces an *Information for prospective students* guide, again published annually, aimed at school leavers intending to continue on to full-time tertiary education. The booklet contains course information and other information useful to first year students. A guide to distance education provides prospective students with information about courses offered by the Monash/Gippsland Distance

Education Centre. In addition, the college produces a weekly newsletter which is distributed to all staff at the college.

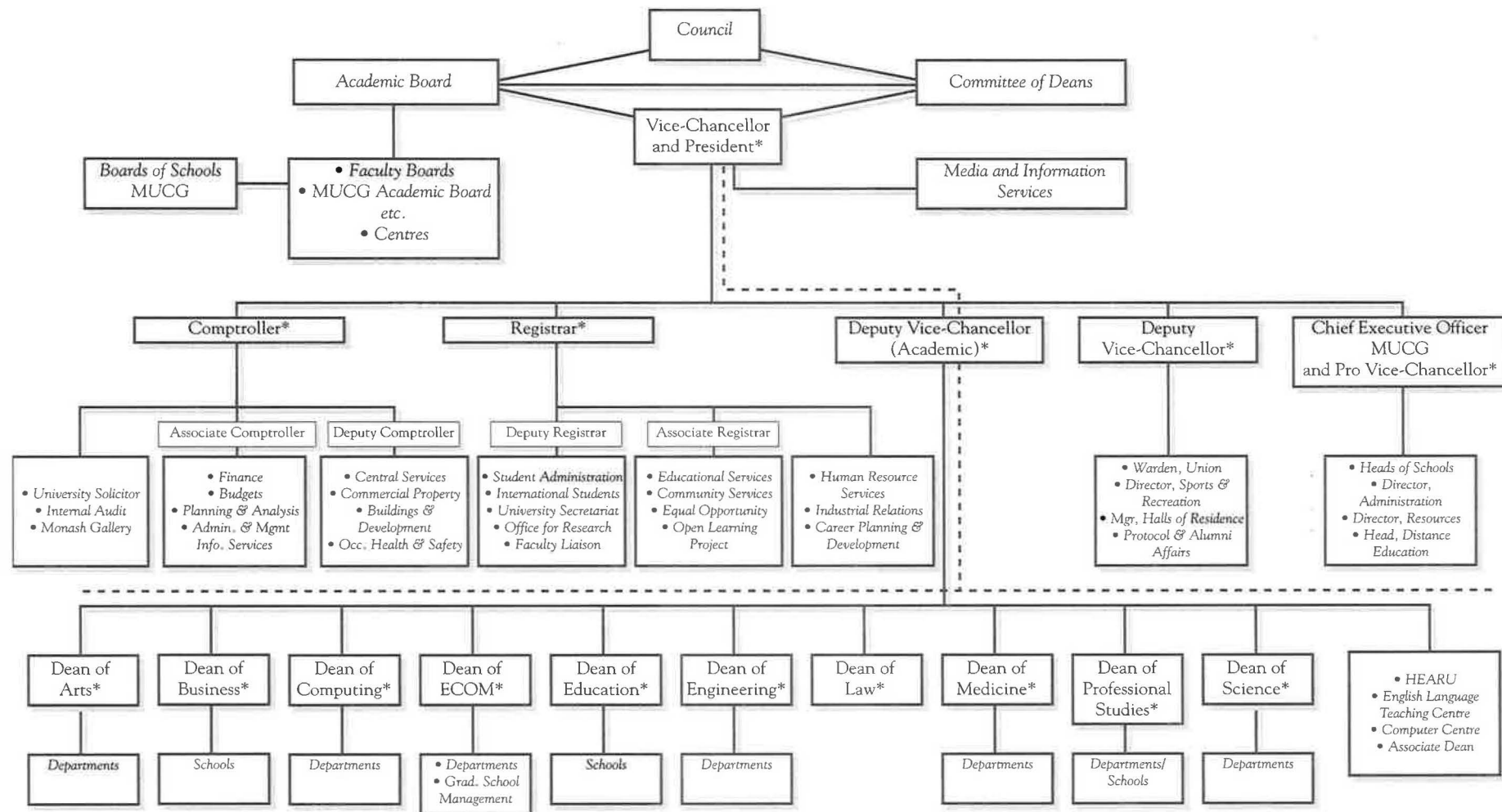
*Companies, joint ventures
and trusts*

Regulation 7(h)

- Montech Pty Ltd (100%) handles commercial aspects of University intellectual property.
- Infertility Medical Centre Pty Ltd (60%) provides specialist medical services.
- Monash–ANZ Centre for International Briefing Pty Ltd (100%).

Reporting lines for administrative responsibility

Regulation 7(e)(iii)



Note

1. Chart reflects reporting relationships only; DVC(A), DVC & PVC have policy responsibilities – eg, DVC (research, general staffing, student issues) DVC(A) (academic issues including academic staffing) PVC (distance education).
2. The officers starred (*) together constitute the Committee of Deans.
3. The dashed (– –) line between Deans, HEARU and Deputy Vice-Chancellor reflects normal day-to-day operational requirements even though the strict reporting line is to the Vice-Chancellor.

Operational objectives

Regulation 8(1)(a)

The merger which took place during 1990 has led to further development of the University's objectives. The overall mission of the University remains unchanged, and is based on its founding Act. In its founding Act Monash University 'shall aim to foster a desire for learning and culture and for a knowledge of the social and cultural as much as the technical and practical aspects in branches of learning and an understanding of their relation to the whole field of human life and knowledge'. The University will also strive to 'aid by research and other means the advancement of knowledge and its practical application to primary and secondary industry and to commerce'. The further development of the University's objectives, while taking account of the strengths of the merging partners, has remained consistent with the founding mission described above. To ensure the success of its mission Monash University is developing its objectives along the following lines.

Research

Monash will be:

- active in scholarship with a substantial number of identified national and international areas of research excellence;
- a leader in involvement in research, development and service with industry, commerce and state enterprises;
- active in establishing financial sources of research funding independent of those provided through normal government channels.

Monash aims to encourage all staff to be active in research and/or scholarship; achieve and maintain a world class research standard in identified key fields; promote individual excellence in research; and strive for an optimum balance between pure and applied research. The University will effectively apply both internal and external resources to achieving these aims.

Teaching

Monash will be:

- committed to excellence in teaching and in being responsive to the needs of our client base;
- continuing to offer a range of teaching programs extending from PhDs to undergraduate programs;
- a major provider of postgraduate professional education and training ranging from short courses to coursework masters degrees;
- a major centre in postgraduate research training.

Monash will promote tertiary education and provide equitable access to undergraduate courses for students in our catchment area; endeavour to attract the best students from throughout Victoria; foster excellence in teaching; and provide a range of teaching programs responsive to clients' needs, including professional upgrading, TAFE, and full-fee paying overseas students. The postgraduate level is of particular priority: Monash will strive to attract top students, both nationally and internationally, to undertake postgraduate research degrees, especially in our fields of identified research strength.

Distance education

Monash will be a major provider of off-campus higher education for the upgrading of professional qualifications, for retraining, and to satisfy cultural and personal development needs of the adult community. Monash will achieve

this aim by strengthening its distance education base, identifying and addressing opportunities for distance education provision, and exploring the application of new and innovative technology to distance education.

Internationalisation

Monash will be:

- the strongest Australian university in Asian studies, languages and business, and have an appropriate balance of Asian and other perspectives in all degree programs;
- among the best known Australian universities throughout the world.

Monash has a substantial international reputation, especially in the United Kingdom, United States of America and Western Europe. In Asia and Asian Studies Monash has an unrivalled reputation. Further development of the internationalisation of Monash University will follow three routes:

- academic staff, departments and faculties will be encouraged to extend their international links;
- the University will target universities in Asia and the Pacific, the USA and Canada, and in Middle and Eastern Europe for the development of institution-to-institution collaborative agreements; and
- the continued marketing of Monash courses, especially through innovative formats.

The broad objectives of these strategies are in teaching, students, research, and development.

Community and culture

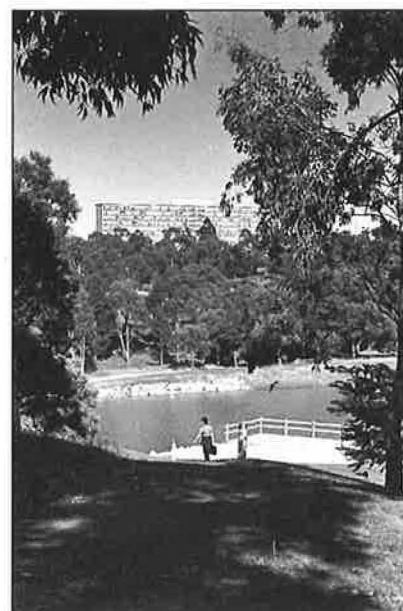
Monash will be an active cultural centre for the local and Melbourne communities. The southern and south eastern suburbs and the Gippsland region are major population centres with few of the facilities available to the city centre. Monash provides, and will continue to develop, access to community facilities, performing and visual arts, and informal public education. Monash will continue to encourage wide community participation in these valuable activities.

The faculties

Monash is a faculty based university with considerable power and responsibilities devolved to the faculties. With the establishment of ten faculties and a university college following the merger, Monash will continue the process of devolution and has encouraged faculties to develop their own objectives and strategic plans in ways that are consistent with and which implement the overall University objectives.

Academic developments and achievements

The University's course offerings were widened and diversified by the merger, but in addition, each faculty devoted considerable time and effort to the development of new courses at both undergraduate and postgraduate level. Planning and approval for the following new courses occurred:



- Bachelor of Accounting
- Bachelor of Arts (Graphic Design)(Honours)
- Bachelor of Business (Banking and Finance) by distance education*
- Bachelor of Business (Retail Management) by distance education
- Bachelor of Commerce
- Bachelor of Computing (Information Systems)
- Bachelor of Computing (Computer Science)
- Bachelor of Computing (Digital Technology)
- Bachelor of Letters (BLitt)
- Graduate Certificate in Computing
- Graduate Certificate in Information Technology
- Graduate Certificate in Management
- Graduate Diploma in Arts (Art History/Film Studies)
- Graduate Diploma in Arts (European Studies)
- Graduate Diploma in Arts (International Relations)
- Graduate Diploma in Arts (Music)
- Graduate Diploma in Business Administration
- Graduate Diploma in Business Technology
- Graduate Diploma of Business (Business Management)
- Graduate Diploma of Business (Human Resources Management)
- Graduate Diploma of Business (Manufacturing Management)
- Graduate Diploma of Business (Marketing-Executive Program)*
- Graduate Diploma in Computer Control and Communications
- Graduate Diploma in Computer Graphics
- Graduate Diploma in Computing
- Graduate Diploma in Digital Communications
- Graduate Diploma in Economic Studies
- Graduate Diploma in Economics
- Graduate Diploma in Epidemiology and Biostatistics
- Graduate Diploma in Industrial and Employee Relations
- Graduate Diploma in Information Technology
- Graduate Diploma in Information and Communications (ICT) Management
- Graduate Diploma in International Relations
- Graduate Diploma in Municipal Engineering
- Graduate Diploma in Occupational Health
- Graduate Diploma in Offshore Engineering
- Graduate Diploma in Project Management
- Graduate Diploma in Robotics
- Graduate Diploma in Structural Engineering
- Graduate Diploma in Water Engineering
- Master of Arts (Craft) by coursework and project
- Master of Arts (History) by coursework and minor thesis
- Master of Arts (International Relations) by coursework and minor thesis
- Master of Arts (Japanese Interpreting and Translation) by coursework and minor thesis
- Master of Business (Banking)
- Master of Business Administration (International Business)
- Master of Business Administration (Technology Management)
- Master of Business Systems
- Master of Child Psychoanalytic Psychotherapy

- Master of Computing
- Master of Industrial and Employee Relations
- Master of Physiotherapy
- Master of Taxation Studies
- Master of Venereology

* Fully approved previously, but approved to be introduced in a different teaching mode.

Academic staff development

Regulation 8(1)(b)

Factors affecting achievement of operational objectives

Throughout the year the Higher Education Advisory and Research Unit has continued to conduct courses for academic staff on all aspects of their professional duties, to provide data to improve administrative decisions and to monitor and comment on the higher education sector in Australia and overseas. Course evaluations by HEARU continue to increase as staff seek to maintain quality without a decrease in desired standards. Outside studies programs provided one hundred and forty-eight members of staff with a period of time in which to conduct research and/or to familiarise themselves with developments in their fields of study.

Staff appraisal

Altogether, 147 academics have undertaken training in staff appraisal techniques. This number included 'supervisors' as defined in the award and 'delegated' staff to the award. It is estimated that over 95 per cent of supervisors, and of staff delegated to this role, have been trained.

Resources and facilities

The impact of a reduction in federal funding in recent years has been felt throughout the University, particularly in resources areas such as the library. The library and the Computer Centre are of major significance to the University's teaching and research work. These areas must maintain a satisfactory service to users whilst meeting the cost of operating and developing facilities which, in both instances require a considerable financial commitment. The difficulties of meeting these challenges have become evident at a time when an increased demand for these resources is occurring.

An additional factor undermining the capacity of the University to support an increased student load is a lack of teaching space. This situation is concentrated around certain undergraduate courses where student numbers are currently large. However, until new facilities become available, including a new general teaching building, teaching space will remain a problem in certain areas for the University.

Regulation 8(1)(c)

Major changes

A major change occurred on 1 July with the coming into force of the *Monash University (Chisholm and Gippsland) Act 1990*. This Act gave effect to the amalgamation with Monash of Chisholm Institute of Technology and Gippsland Institute of Advanced Education. It was the combination of many months of planning, negotiation, and consultations that saw the University enrolment grow to 30 000 students with courses being taught in ten faculties on four campuses. It was by far the most significant event in Monash's twenty-nine year history, an event that will continue to shape the University's future directions for years to come.

Major external reviews

Regulation 8(1)(d)

No major external reviews were conducted during 1990. Internally, however, the consultative processes that were set in train to facilitate the mergers with Chisholm and Gippsland Institutes resulted in nearly every aspect of the University's operation being reviewed, from the constitution of its major deliberative bodies to its academic programs and structures.

Summary of operations

New courses offered in 1990

Regulation 8(1)(e)(i)

- Graduate Diploma in Business Administration (external)
- Associate Diploma in Teaching English to Speakers of Other Languages
- Diploma in Pulp and Paper Technology
- Master of Psychology
- Bachelor of Applied Science (Computing)
- Bachelor of Business (Tourism Management)
- Graduate Diploma of Arts (Visual Arts) by distance education
- Graduate Diploma of Business (Tourism Management)
- Graduate Diploma of Health Science (Gerontics)
- Graduate Diploma of Health Science (Community Health)
- Graduate Certificate of Business (Tourism Operations)

Other initiatives and operational achievements

- Merger with former Chisholm Institute of Technology and Gippsland Institute of Advanced Education, both effected 1 July 1990.
- New faculty structure established, expanding from seven faculties to ten faculties and a university college.
- Monash Distance Education Centre in operation.
- Monash academic development fund and research excellence fund streamlined and combined to form Monash development fund (MDF). Nineteen new teaching and/or research projects funded by MDF in 1990.
- Formal links signed with the University of the Philippines, the University of Gadjah Mada and the University of Indonesia.
- Faculty of Engineering attracted nearly \$K900 from industry to sponsor a new cooperative education program for top undergraduate students.
- Monash plays a key role in the federally funded Languages Institute of Australia, which comprises research centres at Monash, the University of Melbourne, Sydney University, the University of Queensland and Brisbane College of Advanced Education.
- Work was begun on the construction of the new \$M1.5 headquarters of the Australian Pulp and Paper Institute, based at Monash University.
- Monash University and Telecom Australia signed a memorandum of understanding that will lead to a growth in teaching and research in telecommunications engineering at Monash.
- Monash and CSIRO signed a memorandum of understanding designed to encourage collaborative research.

Major works

Regulation 8(1)(e)(ii)

- On the Clayton campus of the University, construction work on the new civil engineering building was commenced. Design development relating to construction of the new general building was completed.

- On the Frankston campus, design development and contract documentation associated with the new technology building was commenced.
- On the Caulfield campus, building surveying services were employed for work on the proposed new engineering building.
- Off campus activities included completion of work on the new science and technology park.
- On the Monash University College Gippsland campus the design, development and contract documentation of the General Teaching and Distance Education Centre building was commenced. The accelerated construction of student residences (48 places) was completed and long overdue library modifications, scheduled to be completed by the commencement of the 1991 academic year were commenced immediately after the end of year examination period. A new computer microlab and five classrooms to replace teaching space incorporated into the modified library were also constructed and commissioned at the University College.

Major research activities

Regulation 8(1)(e)(iii)

Australian Research Council large grants In 1990 Monash staff received forty-seven initial and twenty-six renewal grants totalling \$3 148 400 and staff of the former Chisholm Institute of Technology were awarded four initial and two renewal grants totalling \$234 000 for the 1991 round. The Monash share of the total of ARC funds was 7.12 per cent (including the former Chisholm Institute of Technology) which compares with 6.57 per cent awarded in the previous round. A complete analysis of the ARC large grant awards was prepared and circulated widely throughout the University. The Deputy Vice-Chancellor (Research) and the Manager, Office for Research, continued to hold university-wide faculty information sessions at Clayton, Caulfield and Gippsland campuses at which staff were provided with advice on how to prepare applications for ARC large and small grants and how to prepare for ARC or NH&MRC interviews.

ARC small grants Funds available for the small grants scheme were provided in proportion to the success of the ARC large grants in the previous round. The 'small grants' (\$5 000 to \$25 000 for laboratory departments and \$5 000 to \$15 000 for humanities, social sciences and mathematics) continued to be assessed internally by the institution, in accordance with ARC criteria. The application procedure implemented in the previous year was adhered to in 1990. Faculties assessed and ranked applications before forwarding them to the University Research Committee. The committee prepared a University list which took into account faculty success in the previous large grant round (75 per cent weighting) and the number of new applications from each faculty in the recent round (25 per cent weighting). The result was a total of seventy-four initial and forty-one renewal grants totalling \$1 132 161. In addition former Chisholm Institute of Technology staff received six initial and one renewal grant totalling \$63 300.

National Health and Medical Research Council grants Monash staff were awarded thirty-eight competing and sixty-three continuing grants totalling \$5 457 419 for allocation in 1991. Monash again received the third largest total for universities with medical schools. The University also received two new investigator fellowships and one postdoctoral fellowship. Five NH&MRC large equipment grants totalling \$154 603 were awarded to researchers.

Research infrastructure funding – mechanism A The ARC continued to provide universities with research infrastructure funding as a way of returning some of the 'claw back' funds to tertiary institutions so that they would be directed to areas identified by the institution as a research priority. The infrastructure funds were calculated on the basis of success of the institution in attracting support from Commonwealth competitive grants during 1988 and



1989. Infrastructure funds were allocated to the faculties on the basis of their success in attracting these grants.

Infrastructure development grants – mechanism B The aim of mechanism B is to provide research infrastructure support to develop the research capacity of higher education institutions from the former advanced education sector.

In 1989 Chisholm Institute of Technology submitted to DEET seven proposals that reflected the strongest areas of research performed at the institute. CIT was successful in obtaining funding for 1990 in the following areas:

- | | |
|--|-----------|
| • Water Studies Centre | \$300 000 |
| • Department of Applied Physics | \$150 000 |
| • School of Social and Behavioural Studies | \$50 000 |

DITAC generic technologies grants In 1990 Monash staff were involved in ten GIRD grants attracting 1990 funds amounting to \$1 760 527 awarded by the Department of Industry, Technology and Commerce in each of the three generic technology areas – biotechnology, information and communication technology and new materials technology.

Victorian Health Promotion Foundation Monash staff were awarded nine grants and three scholarships amounting to \$696 204 for 1990.

Monash University/CSIRO collaborative research awards Monash University and CSIRO each provided \$100 000 as part of this continuing scheme. A committee comprising the Deputy Vice-Chancellor (Research), Professor B O West and chiefs of CSIRO divisions assessed thirty-one applications and made twenty awards.

Conference travel grants The Vice-Chancellor made funds available for assisting staff to present papers at overseas conferences. Two rounds of applications were called and a total of 102 grants were awarded amounting to \$68 437. The maximum level of grant awarded was \$800. The postgraduate conference grants-in-aid scheme continued in 1990 which enabled postgraduate students to attend local and overseas conferences. Two rounds were held and 40 awards were given ranging from \$100 to \$500.

Postgraduate scholarships The administration and award of postgraduate scholarships is the responsibility of the PhD and Scholarships Committee. The Research Committee has, however, also been involved in discussions pertaining to the value and number of MGS awards. 1990 saw the allocation of forty-two MGS offered from a budget allocation of \$1.7m. In the two years since the Wilson Report, the nationwide allocation of APRA scholarships has increased from 740 to 1000 per annum. Monash's quota during that time has grown from 64 in 1989 to 73.5 in 1990. Following the University's assumption of responsibility for the payment of APRA stipend and allowances at the beginning of 1990, the University's APRA budgetary allocation from DEET has increased from \$2.784m to \$3.437m in 1991. The later figure also includes monies for APCA and APRA (Industry) stipends. 1990 also saw the introduction of the ARC's new scheme of Australian postgraduate (industry) awards which aimed to encourage industry involvement with University research. Monash staff gained eight scholarships for 1991.

Membership of research councils Professors W R Jackson, M T W Hearn and B Holloway were nominated as Fellows of the Australian Academy of Technological Sciences and Engineering. Professor R Day was made a Fellow of the Australian Academy of Science. Professor I J Polmear served on the Department of Industry, Technology and Commerce's GIRD New Materials Technology Committee.

The School of Business at the University College also continued its support of the Gippsland Region Information Bank, which collects, stores and disseminates information on Gippsland. During 1990 GRIB published the *Gippsland Quarterly Profile and Economic Indicators*, which is disseminated to approximately 600 organisations and individuals. GRIB conducted survey



based research including VFT Public Opinion Survey, Labour Force Turnover in Manufacturing in Victoria and community telephone surveys on quality of life, public transport and journey to work.

The Gippsland School of Applied Science continued active involvement in research and development projects during 1990. The research areas were: coal science (organic sulphur, humates and active carbons); air quality (organic hydrocarbons, visual distance, and acid rain); instrumentation (molybdenum in ore analysis, teaching spectrometer, and on line water monitoring); thermally stimulated processes in organic polymers; magnetic properties of metallic complexes; biological control of bloodworms and mosquitoes; distributed digital communication; multivalued logics and artificial cognition. The School of Engineering developed a discriminating metal detector for use on SECV conveyor belts, to be trialled at the Loy Yang open cut.

Significant activities and achievements

Regulation 8(1)(e)(iv)

In the course of an eventful year for Monash, the following activities and achievements are worthy of note:

Merger with Chisholm Institute of Technology The merger of Monash University and Chisholm Institute became effective on 1 July following the enactment of the *Monash University (Chisholm and Gippsland) Act 1990* in the Victorian Parliament. This was the culmination of an extensive program of consultation that involved academic and general staff and students at both institutions. In the main, the whole venture was approached positively and within an atmosphere of good-will. The merger added some 7 000 additional EFTSU to Monash on campuses at Caulfield and Frankston and saw the establishment of new faculties of Business, Computing and Information Technology, and Professional Studies.

Establishment of Monash University College Gippsland July also saw establishment of Monash University College Gippsland following the merger with Gippsland Institute of Advanced Education, adding a further 3 000 EFTSU to the University's overall student load. The University College, although governed by the Monash Council and subject to the direction of the Monash Vice-Chancellor, retains some autonomy in its day-to-day operation and its strong regional orientation.

Sponsorship of the University of Canberra Monash continues to honour its agreement to sponsor the former Canberra College of Advanced Education in its transition to university status as the University of Canberra. As such, Monash is represented on the new university's council, academic board, and chair selection committees and involved in the establishment of postgraduate programs.

Affiliation with the Pharmacy College of Victoria In a move that will greater expand the University, Monash entered into an affiliation agreement with the Pharmacy College of Victoria in October as the first stage in a process aimed at the full merger of the two institutions. This link, once achieved, will lead to significant academic interaction between the respected professional teaching of the Pharmacy College and the research programs in the University's faculties of Medicine and Science.

Other achievements Other events of significance included official launchings of the National Centre for Research and Development in Australian Studies and the Institute for Contemporary Asian Studies. The centre, partly funded by the Department of Employment, Education and Training, promotes Australian Studies, undertakes research in a variety of fields, conducts teaching and consultancy work, and provides advice to both public and private sectors. The institute brings together the University's expertise in Asian Studies, and works to increase understanding of Asian through teaching, research, publishing, and briefings for the business community.



Grants worth nearly \$2.5 million from the National Health and Medical Research Council (\$300 000 a year for five years), the Victorian Health Promotion Foundation (\$850 000 over three years) and the Vice-Chancellor (\$50 000 a year for two years) were awarded to the Graduate School of Management's Public Sector Management Institute to establish the National Centre for Health Program Evaluation, a joint venture between the Institute and the Department of Community Medicine at the University of Melbourne. The centre is located at Fairfield Hospital. It is interdisciplinary in nature, but its major focus is the evaluation of Australian health programs from an economic point of view.

Work was completed on the new \$1.5 million headquarters of the Australian Pulp and Paper Institute, funded partly by the Pulp and Paper Manufacturers' Federation of Australia and industry. The building is the culmination of plans by Monash and the federation to establish a world-class centre of research into pulp and paper technology, bringing together the research capacities of the University and the strengths of the manufacturing sector.

Under a memorandum of understanding signed by Monash and Telecom Australia, the Centre for Telecommunications and Information Engineering will receive support over five years from both Telecom and the University. Significant funding has also been received from the Victorian Education Foundation. The cooperation involves extending and enhancing the telecommunications components of the undergraduate course. It includes the development of courses in continuing education and the promotion of research. The Faculty of Engineering was successful also in attracting nearly \$900 000 from industry to sponsor a new cooperative education program for top undergraduate students, under which scholarships are funded and work experience provided.

Monash University College Gippsland In October 1988 Monash University and Gippsland Institute of Advanced Education submitted a proposal for designation as a distance education centre. The two institutions made the joint submission as affiliated Institutions moving towards a full merger. In April 1989 the Minister for Employment Education and Training announced the designation of the amalgamated Monash University/Gippsland Institute of Advanced Education as one of the eight nominated distance education centres. By using distance education techniques it is possible to shift student teaching load and student support load between campuses relatively easily, without requiring the physical relocation of staff and students. Distance education therefore offers the amalgamating Monash a very powerful tool for building a corporate strategy, at least in teaching, as a major part of its activities. The Monash Distance Education Centre is to be supported by the Distance Education Resources Centre housed in a new building valued at just over \$12 million to be erected at Gippsland campus. The centre is headed by Professor T Kennedy, who is the chief executive of Monash University College Gippsland and chairman of the National Distance Education Conference. The Vice-Chancellor is advised on the development of distance education at the University by a distance education advisory committee.

Major issues before the advisory committee have been the relationship with continuing education, Asian languages by distance education, student load planning, open learning and computer based learning.

The major policy development effort was the preparation of the distance education background paper, published and circulated within the University in August 1990. In November 1990 a further paper entitled 'Towards a new approach to distance education' was published by the Distance Education Centre working party, a strategic planning group established to advise the chief executive of the college. The major issue of this paper was the relationship between weekend schools and other forms of complementary tuition. Workshops and seminars were run on the national coordination of distance education, computer mediated education and distance education development and student support.

New distance education programs have been developed in banking and finance, retail management, counselling psychology, technology studies, police studies and education professional development studies. The Department of



Japanese obtained a grant of \$175 000 to develop distance education packages in Japanese as part of a Commonwealth sponsored development of distance learning packages in Asian languages coordinated by the National Distance Education Conference. An agreement has been reached with the Hong Kong Polytechnic to offer jointly, the University College's Bachelor of Nursing upgrading course in Hong Kong by distance education, with the polytechnic providing local tutor and student liaison support. Some 150 students enrolled in this program in 1990.

Major promotional activities

Regulation 8(1)(f)

During the year Monash maintained and extended its traditional role as a forum for educational and cultural activities. The University's Centre for International Students, the Office for External Relations and Alumni Affairs and senior staff participated in a busy and successful year. A significant aspect of development in this area has been the growth in the scope and diversity of initiatives undertaken. In general terms this development can be illustrated by the level of overseas promotion of Monash, the enhanced links between Monash and the business community and the specialised approach to the recruitment of students to Monash.

With regard to the overseas promotion of Monash courses, the activities involving exhibitions and seminars are listed below:

January 6–15 The second Gulf Education and Training Exhibition in Dubai, UAE, jointly with Taylor's College to promote all courses and a pre-departure briefing in Singapore on 14 April.

February 20–28 Austrade Korea exhibition to promote all courses, particularly ELICOS and postgraduate courses.

March 5–14 International 'Career 90' exhibition in Singapore to promote mainly undergraduate courses • 6–20 International exhibition and seminar in Hong Kong/Macau, Singapore polytechnic meeting, international exhibition in Taipei for promotion of all courses. Also official opening of Taiwan liaison office.

March/April 26/3 – 9/4 International exhibition in Kuala Lumpur followed by Austrade Singapore to promote all courses.

May 13–18 Attendance at NAFSA conference in USA together with visits to a number of institutions • 14–20 Visit to universities and government bodies in the Philippines to develop awareness and create openings for future promotions.

June 1–18 Seminar/interview program and Austrade Indonesia exhibition in Jakarta, followed by Austrade Thailand exhibition in Bangkok and Chiang Mai for promotion of all courses, particularly at the postgraduate level.

July/August 27/7 – 5/8 Austrade Brunei exhibition followed by seminar/interview program in Jakarta for promotion of all courses, particularly for scholarship applicants.

August/September 28/8 – 12/9 Monash/Taylor's Swinburne seminar/interview program covering five cities in Malaysia. Seminar/interview program in Singapore followed with the view of promoting all courses. Hong Kong seminar/interview program also held for students who had just received GCE 'A' level results.

September 18–24 Seminar/interview program in Hong Kong and Taiwan for promotion of all courses.

October 1–3 Tuart College exhibition in Perth for promotion of all undergraduate courses • 19–25 Seminar/interview program in Singapore and Jakarta for promotion of all courses, particularly undergraduate courses in Singapore following announcement of 'preliminary' results.



November 1-6 Seminar/interview program in Manila to promote postgraduate courses for prospective scholarship holders.

November/December 22/11 - 3/12 Austrade exhibition in Kuala Lumpur, Ipoh and Penang followed by joint Monash/Taylor's promotion in Kuantan and Malacca - promotion of all courses.

December 5-14 International exhibition in Singapore for promotion of all courses followed by visit to Sunway College to promote the 'twinning' arrangements for BEc and BEc/LLB.

The activities of the Centre for International Students have expanded to include recruitment for all campuses and the development and extension of new markets.

Again in 1990, the overseas commitment has been matched at the local level by activities designed to emphasise the esteem and relevance of Monash to potential students, employers, the general public and the business community. This approach continues to reinforce an acknowledgment that communication with people, whether they be directly or indirectly involved with the University is worthwhile. Visitors to the University during the year included seventy-six visits by schools for familiarisation and meeting staff; eleven on-campus camps for schools; over 500 parents of new students on parent orientation day; ninety employers for the purpose of meeting undergraduates and postgraduates; five community groups; twenty-five VIP visits, including the Governor-General of Australia, and the Ministers of Education from Brunei and Indonesia.

Promotional programs also involved Monash staff in visits to other locations. The Course and Career Centre arranged 'Monash days' at sixteen schools and undertook country visits in Victoria and interstate. Thirty-seven tertiary information sessions were conducted; fifty talks were given at schools, parent evenings and careers evenings. Staff from the Course and Career Centre participated in two-day sessions, VTAC briefings for Victorian careers teachers and year 12 coordinators. Monash staff were guest speakers at many community group and professional meetings as a result of individual approaches, through the Course and Career Centre and the Monash University Speakers' Bureau. A program of courtesy calls and liaison visits was undertaken with numerous public and private sector entities, with invitations issued for reciprocal visits to the campus.

The University heightened its profile with its cultural activities on campus, including gallery, theatre and musical performances, and enjoyed widened outreach opportunities through events held at the Caulfield, Frankston and Gippsland campuses. An enormously successful season of theatre was enjoyed at the Alexander Theatre and the University's newly established link with Playbox was celebrated. The University's amenities including the Robert Blackwood Hall and the Alexander Theatre were popular venues for members of the public and community groups.

The University hosted major conferences including the Australian Vibration and Noise Conference and the Australasian Association for Engineering Education.

Several prestigious public lectures were presented both on the Clayton campus and in the city premises. Notable were the Oscar Mendelsohn Lecture, the Florey Lecture and the David Nichol Smith seminar.

In all, 29 246 people visited the Clayton campus for the purpose of attending conferences, seminars and lectures.

Publicity for these functions and other activities based at Monash was generated through regular advertisements placed in the national and local press. Following the establishment of the Office of Public Affairs in August, the University's communications program underwent a major overhaul. This provided new vehicles for publicity and promotion, including *Montage*, *Etcetera* (to begin publication at the start of 1991) and *VC's Desk*.

The *Prospectus*, the University's official publication describing courses and degrees available and *Schools Update*, a quarterly newsletter for students and their advisers were widely distributed to schools and *Highlights of the Month at Monash*, distributed to public libraries and other outlets.



Legislation

Regulation 8(1)(g)

The following internal statutes and regulations were made by Council between January and December 1990 pursuant to its powers under the Act:

Meeting 2/90 – 26 February Statute 2.5 – Committee, Boards of Studies and Institute (Amendment No. 19) Statute; Courses and Degrees (Faculty of Education) (Diploma in Educational Policy and Administration) Regulations; Courses and Degrees (Faculty of Education) (Diploma in Teaching Asian Languages) Regulations; Courses and Degrees (Faculty of Education) (Diploma in Second Language Education) Regulations; Courses and Degrees (Faculty of Medicine) (Degree of Master of Venereology) Regulations

Meeting 3/90 – 9 April Faculties (Amendment No. 102) Regulations; Courses and Degrees (Faculty of Economics and Politics) (Degree of Bachelor of Information Systems) (Amendment No. 5) Regulations; Faculties (Amendment No. 101) Regulations; Courses and Degrees (Faculty of Science) (Degree of Bachelor of Science) (Amendment No. 3) Regulations

Meeting 5/90 – 2 July Statute 2.13 – Monash University College Gippsland; Statute 1.1 – Interpretation (Amendment No. 7) Statute; Statute 2.2 – The Academic Board; Statute 9.2 – Election of Members of the Academic Board; Statute 2.6 – the Discipline Committee (Amendment No. 1) Statute; Statute 4.1 – Discipline (Amendment No. 3) Statute; Courses and Degrees (Faculty of Economics Commerce and Management) (Degree of Master in Business Administration) (International Business) Regulations; Courses and Degrees (Faculty of Economics Commerce and Management) (Graduate Diploma in Business Administration) Regulations; Courses and Degrees (Faculty of Engineering) (Degree of Bachelor of Engineering) (Amendment No. 6) Regulations; Courses and Degrees (Faculty of Science) (Degree of Bachelor of Science) (Amendment No. 4) Regulations; Courses and Degrees (Higher Doctorate) (Amendment No. 2) Regulations; Faculties (Amendments No. 103) Regulations; Academic Dress (Amendment No. 6) Regulations

Meeting 6/90 – 13 August 1990 Statute 2.3 – The Faculties (Amendment No. 13) Statute; Statute 6.1.2 – Courses and Degrees Statute; Statute 1.1 – Interpretation (Amendment No. 8) Statute; Statute 6.1.1 – Courses and Degrees (Amendment No. 9) Statute; Faculties (Amendment No. 105) Regulations; Courses and Degrees (Faculty of Economics Commerce and Management) (Degree of Bachelor of Accounting) Regulations; Courses and Degrees (Faculty of Economics Commerce and Management) (Degree of Bachelor of Commerce) Regulations; Courses and Degrees (Faculty of Education) (Degree of Master of Educational Policy and Administration) (Amendment No. 1) Regulations; Courses and Degrees (Faculty of Engineering) (Degree of Bachelor of Engineering) (Amendment No. 7) Regulations; Courses and Degrees (Faculty of Medicine) (Degree of Master of Psychological Medicine) (Amendment No. 5) Regulations; Courses and Degrees (Faculty of Science) (Degree of Bachelor of Science) (Amendment No. 5) Regulations; Courses and Degrees (Faculty of Economics and Politics) (Degree of Master of Business Administration) (Amendment No. 12) Regulations; Courses and Degrees (Faculty of Economics and Politics) (Master of Business Administration (Mt Eliza)) (Amendment No. 1) Regulations; Courses and Degrees (Faculty of Economics and Politics) (Degree of Master of Management) (Amendment No. 3) Regulations; Courses and Degrees (Faculty of Economics and Politics) (Graduate Diploma in Business Administration (External)) (Amendment No. 1) Regulations; Courses and Degrees (Faculty of Economics and Politics) (Graduate Diploma in Accounting) (Amendment No. 2) Regulations; Courses and Degrees (Faculty of Engineering) (Degree of Bachelor of Engineering) (Amendment No. 7) Regulations; Courses and Degrees (Faculty of Law) (Degree of Bachelor of Law) (Amendment No. 33) Regulations; Courses and Degrees (Faculty of Arts) (Degree of Master of Librarianship) (Amendment No. 7) Regulations; Faculties (Amendment No. 104) Regulations; Academic Dress (Amendment No. 7) Regulations; Elizabeth Eggleston Memorial Fund (Amendment No. 1) Regulations



Meeting 7/90 – 24 September Courses and Degrees (Faculty of Education) (Degree of Master of Educational Studies) (Amendment No. 9) Regulations; Courses and Degrees (Faculty of Education) (Degree of Master of Teaching English to Speakers of Other Languages) Regulations; Admission to Courses (Amendment No. 47) Regulations

Meeting 8/90 – 5 November Statute 3.4.6 – Adjunct Professors; Statute 2.4 – The University Teaching Hospitals (Amendment No. 11) Statute and University Hospitals (Membership of the Faculty of Medicine) (Amendment No. 2) Regulations; Statute 2.1 – The Council (Amendment No. 2) Statute; Statute 2.9 – The Committee of Deans (Amendment No. 3) Statute; Statute 3.5 – Administrative Staff (Amendment No. 2) Statute; Statute 9.2 – Election of Members of the Academic Board (Amendment No. 1) Statute; Courses and Degrees (Faculty of Economics Commerce and Management) (Degree of Master of Management) (Amendment No. 4) Regulations; Courses and Degrees (Faculty of Education) (Degree of Bachelor of Educational Studies) (Amendment No. 25) Regulations; Courses and Degrees (Faculty of Engineering) (Graduate Diploma in the Faculty of Engineering) Regulations; Monash University Engineering Faculty Foundation Regulations; Courses and Degrees (Faculty of Science) (Degree of Bachelor of Science) (Amendment No. 6) Regulations; Courses and Degrees (Faculty of Science) (Degree of Bachelor of Applied Science) Regulations; Courses and Degrees (General) (Amendment No. 7) Regulations; Monash University Syde Faculty Foundation Regulations; Admission to Courses (Amendment No. 47) Regulations

Meeting 9/90 – 17 December Statute 1.1 – Interpretation (Amendment No. 9) Statute; Statute 3.3 – Deans, Associate Deans and Subdeans of Faculties (Amendment No. 4) Statute; Courses and Degrees (Faculty of Computing and Information Technology) (Degree of Bachelor of Information Systems) Regulations; Courses and Degrees (Faculty of Computing and Information Technology) (Degree of Master of Business Systems) Regulations; Courses and Degrees (Faculty of Computing and Information Technology) (Graduate Diploma in the Faculty of Computing and Information Technology) Regulations; Courses and Degrees (Faculty of Computing and Information Technology) (Degree of Master of Computing) Regulations; Courses and Degrees (Faculty of Computing and Information Technology) (Degree of Bachelor of Computing) Regulations; Courses and Degrees (Faculty of Education) (Graduate Diploma of Education (Primary)) Regulations; Courses and Degrees (Faculty of Education) (Diploma in Teaching English to Speakers of Other Languages) (Amendment No. 2) Regulations; Faculties – (Amendment No. 106) Regulations; Courses and Degrees (Faculty of Engineering) (Diploma in Pulp and Paper Technology) (Amendment No. 1) Regulations; Courses and Degrees (Faculty of Engineering) (Degree of Bachelor of Engineering) (Amendment No. 8) Regulations; Courses and Degrees (Faculty of Engineering) (Degree of Bachelor of Computer Science and Engineering) (Amendment No. 1) Regulations; Courses and Degrees (Faculty of Professional Studies) (Degree of Bachelor of Arts) Regulations; Courses and Degrees (Faculty of Professional Studies) (Degree of Bachelor of Arts) (Social Sciences) Regulations; Courses and Degrees (Faculty of Professional Studies) (Degree of Bachelor of Arts) (Police Studies) Regulations; Courses and Degrees (Faculty of Professional Studies) (Degree of Bachelor of Arts in the School of Arts and Design) Regulations; Courses and Degrees (Faculty of Professional Studies) (Degree of Bachelor of Technology) (Design) Regulations; Courses and Degrees (Faculty of Professional Studies) (Degree of Master of Arts) Regulations; Courses and Degrees (Faculty of Professional Studies) (Diploma of Applied Science) (Nursing) Regulations; Courses and Degrees (Faculty of Professional Studies) (Graduate Diploma) Regulations; Courses and Degrees (Diploma in the Faculty of Arts) (Amendment No. 13) Regulations; Courses and Degrees (Faculty of Arts) (Graduate Diploma of Environmental Science) Regulations; Courses and Degrees (Faculty of Arts) (Degree of Master of Arts) (Amendment No. 9) Regulations; Courses and Degrees (Faculty of Law) (Amendment No. 35) Regulations; Courses and Degrees (Faculty of Law) (Amendment No. 34) Regulations; Courses and



Degrees (Faculty of Science) (Graduate Diploma in Applied Polymer Science) Regulations; Courses and Degrees (Faculty of Science) (Graduate Diploma on Applied Science) (Water Science) Regulations; Courses and Degrees (General) (Amendment No. 7) Regulations; Academic Dress (Amendment No. 8) Regulations

Regulations

Regulation 8(1)(h)

The number of internal statutes and regulations made or in force during the year is too numerous to summarise. However, they are printed in the annually revised University Calendar which in 1990 consisted of two volumes. Volume one contained the regulations pertaining to the diploma, degree and higher degree programs offered at Monash and volume two the general statutes and regulations. The Calendar is freely available for purchase within the University.

Persons employed

Regulation 8(1)(i)

A table detailing staff numbers before and after the institutional mergers is attached as appendix 1.

The University has a staff committee, the terms of reference of which are 'to determine policy only on matters relating to conditions for staff appointments and work which are not contained in those awards of Victorian conciliation and arbitration boards or of the Australian Conciliation and Arbitration Commission which cover University staff'.

During 1990 the following significant changes to staffing policy evolved:

- agreements were reached between the University and staff associations representing academic and general staff, to provide for the merger of Monash with Chisholm Institute of Technology and Gippsland College of Advanced Education;
- a common set of employment conditions was negotiated to cover staff employed at the University under the Universities General Staff Award or the CAE PACCT award other than at Monash University College Gippsland;
- transitional promotion reviews were undertaken to commence integration of academic promotion procedures, to be based solely on merit;
- staff of the former Chisholm Institute were transferred to the University's integrated staff information system for payroll and personnel records purpose.

In July 1990, the University's Equal Opportunity Advisory Committee, a standing committee of Council, was replaced by a reconstituted Equal Opportunity Committee. This step was necessitated by the merger with the former Chisholm Institute of Technology. The committee is required to recommend equal opportunity and affirmative action policies and objectives, to monitor the effectiveness of these programs and to report on progress.

Membership includes representatives of management, staff associations, trade unions and student associations. Composition and terms of reference were agreed in joint meetings of the former equal opportunity committees of Monash University and the Chisholm Institute of Technology before the merger.

The committee recommended to Council a revised equal opportunity policy for the enlarged institution, which incorporated the best features of the pre-existing policies and introduced new concepts in line with developments in equal opportunity legislation. The committee has commenced work on the integration of the affirmative action programs of the merging institutions. The chief objective of the program is to develop an affirmative action program which will promote balanced representation of women and men on equitable terms in all courses, both undergraduate and postgraduate; in all occupational groupings and classifications; and in all decision making bodies.



Specific objectives are concerned with selection and promotion procedures, terms and conditions of employment, staff development, management and decision-making, publicity and education, and provision of childcare.

Arising out of a needs analysis survey various training programs are being developed at Gippsland for the training of staff. In November a program for staff involved on selection panels was offered, with each session well attended.

Pecuniary interests

Regulation 8(1)(j)

The *Monash University Act 1958* states that any member of the Council or of any committee appointed by the Council shall be disqualified from voting on subject matter in which the member has a direct pecuniary interest.

Overseas visits

Regulation 8(1)(k)

Officers of the University, in their respective roles, undertook various overseas trips during the year. All of these trips were related to the technical or procedural aspects of their employment or terms of appointment.

Occupational health and safety

Regulation 8(1)(l)

The University Council approved two new occupational health and safety policies – namely, incident reporting, investigation and recording and a policy with respect to smoking. The occupational health and Safety Policy Committee (OHSPC) initiated a review of ionising radiation safety covering the twenty-three (pre-merger) departments in which ionising radiation is used in teaching and/or research. All laboratories in which ionising radiation is used or stored have been inspected and the review committee will submit its report early in 1991. The OHSPC also requested its road and traffic sub-committee to review the use of bicycles on the Clayton campus, particularly with respect to cycling on footpaths. The sub-committee's report is expected to be finalised early in 1991.

In the second half of the year a strategy for introducing the Monash University OHS structure of zone OHS committees was developed with the campus coordinators at the Caulfield and Frankston campuses. Introduction of this structure was initiated in December 1990.

There were seven fires reported but none of them major. An increased level of OHS awareness was reflected in an increased level of incident reporting. The most serious incidents tended to be those involving musculo-skeletal injuries, particularly amongst cleaning staff. There were also a number of incidents involving hazards such as asbestos, chemicals and dangerous machinery which led to Department of Labour involvement.

Two major projects involving upgrading of the University's 420 fume cupboards and improving fire safety in our buildings continued. Five fume cupboards were upgraded to comply as far as practicable with the Australian standard. Full fire alert and intercommunication systems were installed in the Engineering faculty, the main library and the Hargrave library, Medicine A, B, C, D and E and the Menzies building, and tunnel cabling was laid to enable installation alert systems in other buildings as funds become available. Another major project was initiated – namely, the implementation of the new Dangerous Goods (Storage and Handling) Regulations. The University will develop software to enable chemical inventories to be maintained and to enable the calculations and reports required by the regulations to be generated on a campus by campus basis.

The OHS branch conducted a range of OHS training courses in fire safety (90 attendees) first aid (88 attendees), cardio-pulmonary resuscitation (42 attendees), use of emergency breathing apparatus (73 attendees) and zone OHS committee training (29 attendees). This is an area which continued to require time and effort developing strategies, rehabilitation and education to enable a more structured approach.



The Equal Opportunity and Affirmative Action Committee, the terms of reference of which include 'to recommend equal opportunity and affirmative action policies and objectives, to advise on the development of equal opportunity and affirmative action management plans, to monitor the effectiveness of programs, and to report regularly to staffing committee on progress in meeting program objectives and legislative requirements' met regularly during 1990. Membership of the committee comprises students including a nominee of the Union board, academic staff including a nominee of the Academic Staff Association, general staff including a nominee of ACUSA (Gippsland branch) with the equal opportunity coordinator and equal opportunity officer being ex-officio members.

Industrial relations

Regulation 8(1)(m)

The University modified its approach to Industrial Relations during 1990. Due to the amalgamation with Chisholm Institute of Technology the Industrial Relations Branch was created. A staff of a director and two industrial officers will allow the University to react quickly to problems resulting from the merger, award restructuring and other issues.

In 1990 the University, in common with many others across Australia encountered industrial action from academic staff towards the end of the year on award restructuring issues.

Overall the University experienced more industrial action in 1990 than the previous year although the causes were related more to external factors than to internal management practices. There was no consequential quantifiable lost time.

This is an area of continual change at Gippsland, requiring negotiation and provision of advice and follow-up action in relation to the restructuring and efficiency and effectiveness determinations for academic, general and wages staffs.

Freedom of information

Regulation 8(1)(n)

The University received sixty-two requests under the *Freedom of Information Act* for 1990 of which thirty-nine related to access to examination results/script books and the remainder distributed between academic, personal and administrative records. Full access was granted to documentation in all but nine cases whereupon partial access was granted. Prior to amalgamation on 1 July 1990, the Chisholm Institute received no requests for access under the Act. The Gippsland Institute received three requests between 1 January and 30 June 1990 which were satisfied without reference to the Act.

The Victorian freedom of information legislation continues to be a light load on the College at Gippsland due to the open access policy. The freedom of information manager, John Maynard, attended several freedom of information seminars at the Leo Cussen Institute in Melbourne prepared by the Attorney-General's Department. The college produced its regular thirty-page Freedom of Information Part II publication requirement and statistics return as required under the Victorian *Freedom of Information Act 1982*.

Major committees (external)

Regulation 8(1)(o)

There are no major committees established by Monash but external to the University, which deal with public policy matters.

Prices, rates and levies

Regulation 8(1)(p)&(q)

Overseas students who successfully sought admission into courses were enrolled on a full fee paying basis. Certain graduate and higher degree courses were available for enrolment on a fee paying basis. The student amenities fee in 1990 was \$299 for full-time and \$130 or \$188 part-time depending on the fractional enrolment. The University Union catering areas provide food and



beverages to students and the public at prices marginally lower than market prices. The University charges rentals on properties let at market prices.

Major financial and performance statistics

Regulation 8(1)(r)

The financial statement comprises a separate section of the report.

Performance statistics

Attached as appendix 2 are the following summary tables:

- Appendix 2.1 Institutional mergers – enrolments and student load at 31.03.90
- Appendix 2.2 Enrolments by degree and faculty 1989/90
- Appendix 2.3 Student load by course 1989/90
- Appendix 2.4 Past course completions 1988/89

Statement by principal accounting officer

In my opinion: (a) the financial statements of Monash University present fairly the financial transactions of the University during the financial year ended 31 December 1990 and the financial position of its operations for the year ended on that date, and (b) the financial statements of the body have been prepared in accordance with section 11 of the *Annual Reporting Act 1983* and the *Annual Reporting (Contributed Income Sector) Regulations 1988*.

In addition, I am not aware at the date of signing these statements, of any circumstances which would render any particulars included in the statements to be misleading or inaccurate.

R J Cochrane
Principal accounting officer
6 September 1991

Monash University – accounts for the year 1990

Statement by vice-chancellor and comptroller

In our opinion: (a) the financial statements of Monash University present fairly the financial transactions of the University during the financial year ended 31 December 1990, and the financial position of its operations for the year ended on that date, and (b) the financial statements of the body have been prepared in accordance with section 11 of the *Annual Reporting Act 1983* and the *Annual Reporting (Contributed Income Sector) Regulations 1988*.

In addition, we are not aware at the date of signing these statements, of any circumstances which would render any particulars included in the statements to be misleading or inaccurate.

M I Logan
Vice-chancellor
6 September 1991

P B Wade
Comptroller
6 September 1991

Balance sheet as at 31 December 1990

1989			1990	
Consolidated \$000	Monash University \$000		Consolidated \$000	Monash University \$000
		Equity		
22 326	5 566	Capital	1(c)(iv)	116 065
13 989	13 989	Reserves	1(c)(v)	553 081
11 843	3 568	Retained surplus		41 433
<u>48 158</u>	<u>23 123</u>	Total equity		<u>710 579</u>
		Current liabilities		
2 970	2 955	Bank overdraft		1 668
11 807	12 068	Accounts payable and accrued expenses	8	16 119
4 053	4 053	Student fees received in advance		9 818
18 868	18 868	Government grants received in advance		28 271
2 197	2 197	Loans	9(a)	2 217
24 615	24 548	Provision for long service and accumulated recreation leave	1(b)	38 076
<u>—</u>	<u>—</u>	Amounts payable to associated entities		344
<u>64 510</u>	<u>64 689</u>	Total current liabilities		<u>96 513</u>
		Non-current liabilities		
<u>4 833</u>	<u>4 833</u>	Loans and advances	9(b)	<u>14 232</u>
<u>117 501</u>	<u>92 645</u>	Total equity and liabilities		<u>821 324</u>
		Current assets		
1 142	1 084	Cash at bank and on hand		722
4 642	4 711	Accounts receivable	5	8 750
1 662	1 662	Inventories	4	1 736
64 203	63 741	Short term investments	7(a)	98 073
1 847	1 845	Payments in advance		3 031
263	—	Amounts receivable from associated entities		50
<u>73 759</u>	<u>73 043</u>	Total current assets		<u>112 362</u>
		Non-current assets		
<u>—</u>	<u>—</u>	Land and buildings	1(a)(v)	508 048
<u>—</u>	<u>—</u>	Leasehold improvements		126
17 322	16 999	Equipment	1(a)(iii)	34 885
<u>—</u>	<u>—</u>	Library books	1(a)(iv)	133 902
26 420	2 603	Investments	7(b)	31 346
<u>—</u>	<u>—</u>	Loans	6	655
<u>43 742</u>	<u>19 602</u>	Total non-current assets		<u>708 962</u>
<u>117 501</u>	<u>92 645</u>	Total assets		<u>821 324</u>

The accompanying notes form part of these financial statements.

Consolidated statement of changes in equity for the year ended 31 December 1990

	Notes	Contributed capital and Crown equity \$000	Funds held for restricted purposes \$000	Funds held in perpetuity \$000	Asset revaluation reserve \$000	Retained surplus \$000	1990 Total \$000	1989 Total \$000
Balance at 1 January 1990		586	4 146	17 594	13 989	11 843	48 158	46 974
Balance at 1 July 1990 (merger)		86 770	501	76	45 792	11 044	144 183	
Surplus for the period						22 193	22 193	8 609
Capital receipts		2 745					2 745	586
Retroactive adjustment for								
Provision for long service leave	1(b)							(16 000)
Provision for recreation leave	1(b)							(6 000)
Transfer from retained surplus to								
Contributed capital		626				(626)	—	
Funds held for restricted purposes			1 108			(1 108)	—	
Funds held in perpetuity				1 913		(1 913)	—	
Asset revaluation reserve								
Non-current assets capitalised					493 300		493 300	13 989
Balance at 31 December 1990	1(c)	90 727	5 755	19 583	553 081	41 433	710 579	48 158

The accompanying notes form part of these financial statements.

Revenue and expense statement for the year ended 31 December 1990

1989		1990		
Consolidated \$000	Monash University \$000		Consolidated \$000	Monash University \$000
		Notes		
Operating revenue providing fund inflows				
137 055	137 055		173 330	173 330
1 889	1 889	10	5 645	5 645
—	—		2 101	2 101
1 756	1 756		3 981	3 981
5 148	5 148		11 106	11 106
—	3 842		—	4 076
13 116	13 116		19 291	19 291
3 318	3 318		5 413	5 248
11 859	9 490		16 011	12 123
28 259	25 638	11	38 630	34 088
<u>202 400</u>	<u>201 252</u>		<u>275 508</u>	<u>270 989</u>
Less				
Operating expense requiring fund outflows				
44 623	46 918		59 463	61 334
127 387	126 354		170 048	168 749
3 438	3 430		7 447	7 434
42	20		147	105
805	805	9(c)	924	924
54	39		64	44
367	285		743	287
41	—		50	—
<u>176 757</u>	<u>177 851</u>		<u>238 886</u>	<u>238 877</u>
<u>25 643</u>	<u>23 401</u>		<u>36 622</u>	<u>32 112</u>
Operating surplus attributable to fund items				
Operating expenses not requiring fund outflows				
7 030	6 933		10 926	10 796
2 228	2 191	1(b)	1 307	1 284
387	357	1(b)	2 152	2 130
—	—		44	44
<u>9 645</u>	<u>9 481</u>		<u>14 429</u>	<u>14 254</u>
Operating revenue not providing fund inflows				
(9 645)	(9 481)		(14 429)	(14 254)
15 998	13 920	14	22 193	17 858
7 389	7 389		—	—
8 609	6 531		22 193	17 858
46 974	24 017		11 843	3 568
—	—	2	11 044	11 456
<u>55 583</u>	<u>30 548</u>		<u>45 080</u>	<u>32 882</u>
Less				
Retroactive adjustments for				
16 000	16 000	1(b)	—	—
6 000	6 000	1(b)	—	—
Transfers to reserves				
—	—		626	600
4 146	4 146		1 108	1 108
17 594	834		1 913	606
<u>11 843</u>	<u>3 568</u>		<u>41 433</u>	<u>30 568</u>
Retained surplus at 31 December 1990				

The accompanying notes form part of these financial statements.

**Statement of source and application of funds for the year ended
31 December 1990**

	Notes	Consolidated \$000	Monash University \$000
Source of funds			
Funds from operations			
Operating revenue providing fund inflow		275 891	271 372
Operating expenses requiring fund outflow as per revenue and expense statement		238 930	238 921
Operating surplus attributable to fund items	14	36 961	32 451
Contributed equity capital receipts		2 745	2 745
Reduction in assets			
Current assets			
Cash at bank and on hand		420	543
Amounts receivable from associated entities		213	—
		633	543
Increase in liabilities			
Current liabilities			
Accounts payable and accrued expenses		4 312	4 867
Student fees received in advance		5 765	5 765
Government grants received in advance		9 403	9 403
Loans		20	20
Amounts payable to associated entities		344	203
		19 844	20 258
Non-current liabilities			
Loans and advances		9 399	9 399
<i>Total source of funds</i>		69 582	65 396
Application of funds			
Increase in assets			
Current assets			
Accounts receivable		4 064	3 918
Inventories		74	74
Short term investments		33 870	33 922
Payments in advance		1 184	1 185
Amounts receivable from associated entities		—	301
		39 192	39 400
Non-current assets			
Land and buildings and equipment		23 381	22 681
Investments		4 926	1 266
Loans		655	655
Leasehold improvements		126	107
		29 088	24 709
Decrease in liabilities			
Current liabilities			
Bank overdraft		1 302	1 287
<i>Total application of funds</i>		69 582	65 396

The accompanying notes form part of these financial statements.

1000

2 Principles of consolidation

There was a merger between Monash University, the Chisholm Institute of Technology and the Gippsland Institute of Advanced Education on 1 July 1990. The accounts of the University have been prepared on the basis of consolidating the audited accounts of the Chisholm Institute of Technology and the Gippsland Institute of Advanced Education as at 30 June 1990 and taking account of subsequent transactions from 1 July 1990 to 31 December 1990. In addition to this the accounts have been consolidated on the basis of the University's controlling and beneficial interest in the following associated entities: Montech Pty Ltd, Infertility Medical Centre Pty Ltd, Monash University Foundation, Pelletray Pty Ltd, Monash-ANZ Centre for International Briefing Pty Ltd.

- **Montech Pty Ltd** The principal activities of the company were the marketing and promotion of commercially viable projects predominantly developed at Monash University. At 31 December 1990, the University owned all the shares in Montech Pty Ltd. The operating loss of the company for the financial year was \$187 654 (1989 \$29 649). The total assets of the company at 31 December 1990 amounted to \$787 460 (31 December 1989 \$604 622). The total liabilities of the company at 31 December 1990 amounted to \$809 629 (31 December 1989 \$505 400).

- **Infertility Medical Centre Pty Ltd** The principal activities of the company during the year were the provision of medical services, particularly in the area of infertility. At 31 December 1990 the University owned 70 per cent of the shares in Infertility Medical Centre Pty Ltd. The operating profit of the company for the year after charging income tax expense and including extraordinary items was \$nil (1989 nil). The total assets of the company at 31 December 1990 amounted to \$640 859 (31 December 1989 \$535 272). The total liabilities of the company at 31 December 1990 amounted to \$640 759 (31 December 1989 \$535 172).

- **Monash University Foundation** Monash University Foundation is a trust created by the University in 1983. The University is the sole beneficiary of the trust and received contributions from the foundation in 1990 totalling \$4 076 000 (1989 \$3 842 000).

- **Pelletray Pty Ltd** The principal activities of the company during the year were property management and investment, which continued unchanged following the merger of the Chisholm Institute of Technology with Monash University on 1 July 1990. At 31 December 1990 the University owned 100 per cent of the shares in Pelletray Pty. Ltd. The operating profit of the company for the six months ended 31 December 1990 was \$119 320.

- **Monash-ANZ Centre for International Briefing Pty Ltd** The principal activities of the company were those of an international briefing centre in Australia. At 31 December 1990 the University owned 100% of the shares in Monash-ANZ Centre for International Briefing Pty Ltd. The operating profit of the company for the year after charging income tax expense and including extraordinary items was \$nil. The total assets of the company at 31 December 1990 amounted to \$99 119. The total liabilities of the company at 31 December 1990 amounted to \$99 117.

3 Other associated entities

(a) At 31 December 1990 Monash University was the sole beneficiary and unit holder of two trusts which were created on 16 June 1988 – namely the Infertility Medical Centre Pathology Services Trust, which carries out pathology tests in public practice and the Obstetrics and Diagnostic Ultrasound Services Trust, which carries out ultrasound tests in public practice. The University does not have a controlling interest in the income-producing assets of the trusts, and accordingly the trusts have not been consolidated into the University accounts. The University has taken in the distributions by the trusts as income in 1990 as follows: Infertility Medical Centre Pathology Services Trust – \$350 000 (1989 \$500 000).

(b) The Sir John Monash Business Centre Pty Ltd was incorporated on 16 July 1990 on which date it acquired the assets and liabilities of the Sir John Monash

Business Centre joint venture. The company issued 600 000 ordinary \$1 shares as follows:

	\$
50% Council of Adult Education	300 000
50% Monash University	300 000
Issued and fully paid	<u>600 000</u>

At 31 December 1990 the non-current borrowings of the company were as follows:

	\$
Loan from Council of Adult Education	250 000
Loan from Monash University	250 000
	<u>500 000</u>

The operating loss of the company for the period from 16 July 1990 to 31 December 1990 was \$183 951.

4 Inventories

Only materials which are purchased and controlled centrally have been reported within the statement of balances. Materials purchased by the University for departmental use and held under the control of individual departments have been expended at the time of purchase. Perpetual stock records were maintained for centrally controlled stock. Stock-takes of centrally controlled stock were completed at 31 December 1990 and valuations at cost were as follows:

1989			1990	
Consolidated	Monash		Consolidated	Monash
\$000	University		\$000	University
\$000	\$000		\$000	\$000
1 076	1 076	Trading bookshop	593	593
294	294	Union and sports and recreation	317	317
73	73	Central building maintenance store	181	181
29	29	Halls of residence	26	26
178	178	Central stationery store	477	477
12	12	Other academic services	142	142
<u>1 662</u>	<u>1 662</u>		<u>1 736</u>	<u>1 736</u>

5 Accounts receivable

1989			1990	
Consolidated	Monash		Consolidated	Monash
\$000	University		\$000	University
\$000	\$000		\$000	\$000
132	132	Accrued Government grants	552	552
1 922	1 897	Trade debtors	3 240	2 962
537	537	Student loan debtors	832	832
—	114	Infertility Medical Centre Pty Ltd	—	149
2 031	2 031	Other income receivable	4 112	4 164
20	—	Loan account – unsecured	14	14
<u>4 642</u>	<u>4 711</u>		<u>8 750</u>	<u>8 673</u>

6 Loans receivable – non-current

1989			1990	
Consolidated	Monash		Consolidated	Monash
\$000	University		\$000	University
\$000	\$000		\$000	\$000
—	—	Loans receivable from associated entities –		
—	—	Unsecured loan to Sir John		
—	—	Monash Business Centre Pty Ltd	250	250
—	—	Other loans unsecured	405	405
<u>—</u>	<u>—</u>		<u>655</u>	<u>655</u>

7 Investments

Short term investments, common fund investments and Monash University Foundation investments are managed by fund managers and are included in the accounts on the basis of statements from the fund managers.

1989		1990	
Consolidated \$000	Monash University \$000	Consolidated \$000	Monash University \$000
(a) Current			
64 203	63 741	89 808	89 808
—	—	8 265	7 855
<u>64 203</u>	<u>63 741</u>	<u>98 073</u>	<u>97 663</u>
(b) Non-current			
Investments in managed funds			
<i>Monash University Foundation</i>			
J P Morgan Investment Management Australia Limited, at cost			
23 844	—	27 487	—
(market value: 31 December 1990 \$26 925 036 31 December 1989 \$27 207 105)			
<i>Common fund</i>			
Westpac Investment Management Pty Ltd, at cost			
2 440	2 440	2 656	2 656
(market value: 31 December 1990 \$2 909 720 31 December 1989 \$2 882 432)			
135 000 ordinary shares in Montech Pty Ltd			
—	135	—	135
300 000 ordinary shares in Sir John Monash Business Centre Pty Ltd, at cost			
—	—	300	300
Deposits with Farrow Group, at valuation based on the face value of Victorian Government bonds			
—	—	745	745
Semi-government securities, at cost			
101	—	118	—
5	—	5	—
30	28	35	33
<u>26 420</u>	<u>2 603</u>	<u>31 346</u>	<u>3 869</u>

8 Accounts payable and accrued expenses

1989		1990	
Consolidated \$000	Monash University \$000	Consolidated \$000	Monash University \$000
6 212	5 705	8 626	8 378
1 813	1 447	4 583	3 696
2 779	2 779	2 129	2 129
519	519	—	—
—	1 116	—	1 865
—	18	—	86
484	484	781	781
<u>11 807</u>	<u>12 068</u>	<u>16 119</u>	<u>16 935</u>

9 Loans payable

1989		1990	
Consolidated \$000	Monash University \$000	Consolidated \$000	Monash University \$000
(a) Current			
			Loans from Victorian Public Authorities Finance Agency (VicFin) secured by guarantee repayable 1 February 1991
2 000	2 000	2 000	2 000
			Loans from banks secured by mortgage against the revenues of the University repayable 0-1 year
185	185	205	205
12	12	12	12
<u>2 197</u>	<u>2 197</u>	<u>2 217</u>	<u>2 217</u>
(b) Non-current			
			Loans from Victorian Public Authorities Finance Agency (VicFin) secured by guarantee repayable 15 June 1996
2 000	2 000	2 000	2 000
2 007	2 007	2 007	2 007
			Loans from banks secured by mortgage against the revenues of the University repayable 1-2 years
206	206	54	54
164	164	167	167
414	414	8 357	8 357
			Loan, repayable to Student Guild, Caulfield campus, secured by occupancy agreement repayable over 5 years
—	—	1 486	1 486
			Other loans, unsecured repayable 1-2 years
24	24	145	145
18	18	16	16
<u>4 833</u>	<u>4 833</u>	<u>14 232</u>	<u>14 232</u>
(c) Interest expense			
689	689	806	806
			In 1990 on loans from banks and other loans
116	116	118	118
<u>805</u>	<u>805</u>	<u>924</u>	<u>924</u>

10 Revenue – Commonwealth Government grants

1989		1990	
Consolidated \$000	Monash University \$000	Consolidated \$000	Monash University \$000
123 887	123 887	158 303	158 303
461	461	487	487
3 053	3 053	4 278	4 278
9 654	9 654	10 262	10 262
<u>137 055</u>	<u>137 055</u>	<u>173 330</u>	<u>173 330</u>

11 Other revenue

1989			1990	
Consolidated \$000	Monash University \$000		Consolidated \$000	Monash University \$000
		Outside earnings including income from photocopying, vending machines, special activities, parking etc.		
		from auxiliary business type activities	8 291	8 291
5 807	5 807			
8 104	8 104	from academic activities	10 181	10 181
4 408	4 408	Student amenities fees	4 775	4 775
		Student resident fees – halls of residence	3 859	3 859
3 026	3 026			
1 931	1 931	Rentals and hirings	2 447	1 922
1 006	1 006	Fees for short courses	2 129	2 129
—	—	Profit on disposal of fixed assets	107	107
3 977	1 356	Other income	6 841	2 824
<u>28 259</u>	<u>25 638</u>		<u>38 630</u>	<u>34 088</u>

12 Expenditure commitments

1989			1990	
Consolidated	Monash		Consolidated	Monash
\$000	University		\$000	University
	\$000			\$000
1 257	1 257	Capital-equipment grant purchases	1 376	1 376
<u>1 267</u>	<u>1 267</u>	Building expenditure	<u>6 146</u>	<u>6 146</u>
<u>2 524</u>	<u>2 524</u>		<u>7 522</u>	<u>7 522</u>

13 Lease commitments

1989			1990	
Consolidated \$000	Monash University \$000		Consolidated \$000	Monash University \$000
		Rental commitment at 31 December 1990		
280	280	not later than 1 year	1 127	280
280	280	later than 1 year and not later than 2 years	1 193	280
512	512	later than 2 years and not later than 5 years	3 269	232
—	—	later than 5 years	2 313	—
<u>1 072</u>	<u>1 072</u>		<u>7 902</u>	<u>792</u>

14 Reconciliations

Reconciliation of operating result with funds from operations is as follows:

	Consolidated \$000	Monash University \$000
Operating surplus	22 193	17 858
Add		
Depreciation	10 926	10 796
Provision for long service leave	1 307	1 284
Provision for recreation leave	2 152	2 130
Proceeds of sale of fixed assets	<u>490</u>	<u>490</u>
	14 875	14 700
	<u>37 068</u>	<u>32 558</u>
Less		
Profit on disposal of fixed assets	<u>107</u>	<u>107</u>
	<u>36 961</u>	<u>32 451</u>

15 Superannuation funds

The University contributes to the following superannuation funds on behalf of employees.

(a) Superannuation Scheme for Australian Universities This scheme is a defined benefit scheme and the University makes contributions at the rate of 14 per cent of gross salary. Employees contribute at the rate of 7 per cent of gross salary. The last actuarial review of the scheme was in December 1988 and indicated the fund was in a strong financial position. Total contributions by the University for the year ended 31 December 1990 were \$12 509 382 (1989 \$9 937 753).

(b) 'M' Superannuation Scheme This scheme is a defined benefit scheme and the University makes contributions at the rate of 12.6 per cent of gross salary. Employees contribute at the rate of 6.3 per cent of gross salary. The last actuarial review of the scheme was in December 1987, and indicated the fund was in a strong financial position. Total contributions by the University for the year ended 31 December 1990 were \$93 621 (1989 \$96 631).

(c) Staff Superannuation Scheme ('A' Scheme) This scheme was introduced under Statute 3.6 of the *Monash University Act* and is an endowment assurance benefit scheme. The University makes contributions at the rate of 10 per cent of gross salary. Employees contribute at the rate of 5 per cent of gross salary. Total contributions by the University for the year ended 31 December 1990 were \$102 229 (1989 \$76 329).

(d) Monash University (Non-Academic) Superannuation Scheme This scheme is an endowment assurance benefit scheme and the University makes contributions at the rate of 5 per cent of gross salary. Employees contribute at the rate of 5 per cent of gross salary. Total contributions by the University for the year ended 31 December 1990 were \$2 959 (1989 \$3 687).

(e) Tertiary Education Superannuation Scheme This scheme is a cash accumulation productivity scheme and the University makes contributions at the rate of 3 per cent of gross salary. Employees have no requirement to contribute. Total contributions by the University for the year ended 31 December 1990 were \$3 626 622 (1989 \$2 934 318).

(f) State Superannuation Board of Victoria Employees contribute between 3 per cent and 8 per cent of annual salary depending on their age. The University is required to pay periodically the emerging cost in respect of employees who have retired. For the six months ended 31 December 1990 this cost was \$1 130 493.

No provision has been made for the future pension costs of former employees who are members of the Victorian State Superannuation Scheme. Such costs are accounted for as and when they emerge and are invoiced to the University by the trustees of the scheme. The impact of this cost has been lessened by the announcement in 1981 by the Minister for Education that the Commonwealth Government had decided to assist with the additional superannuation costs to institutions for staff in State Government emerging cost schemes such as the Victorian State Superannuation Scheme. This additional funding by way of supplementation relates to costs beyond those incurred in 1981.

Auditor-general's report

The accompanying financial statements comprising balance sheet, revenue and expense statement, consolidated statement of changes in equity, statement of sources and application of funds and notes to the financial statements of Monash University and of the group have been audited as required by the *Annual Reporting Act 1983* and in accordance with Australian Auditing Standards.

The group consists of the Monash University and its subsidiaries, Montech Proprietary Limited, Infertility Medical Centre Proprietary Limited, Monash University Foundation, Pelletray Proprietary Limited and Monash-ANZ Centre for International Briefing Proprietary Limited.

(i) As stated on note 7(b) to the financial statements, the investments held in managed funds totalled \$30.1 million. These investments and the related income of \$4 million have been included in the financial statements on the basis of statements furnished by the fund managers. As audit was unable to independently verify these investments and the related income I am not in a position to, and do not, express an opinion on these items.

(ii) In the revenue and expense statement, the University has distinguished between revenue and expense items involving fund inflows and outflows and those not requiring fund inflows and outflows. This approach is required by the *Annual Reporting (Contributed Income Sector) Regulations 1988*. The statement prepared on this basis discloses a net surplus of \$22.2 million for the year after incurring total expenses of \$253.3 million and earning total revenues of \$275.5 million. I consider that disclosure of all revenue and expense items on an aggregate basis, with no distinction between fund inflows and outflows and with separate reporting of supplementary information of a funding nature, would result in a clearer presentation of the University's performance.

In my opinion, except for the effect of the matters referred to in paragraph (i) above, the financial statements comply, in all material respects, with the requirements of the *Annual Reporting Act 1983* and present fairly the state of the affairs of the Monash University and of the group as at 31 December 1990 and the results of its operations for the year ended on that date in accordance with the Statements of Accounting Concepts and Australian Accounting Standards.

C A Baragwanath
Auditor-general
9 October 1991

- 1 Staff numbers before and after institutional mergers
- 2.1 Institutional mergers – enrolments and student load
- 2.2 Past course completions 1989/90
- 2.3 Enrolments by degree and faculty 1989/90
- 2.4 Student load by course 1989/90
- 3 Graduates of the university 1990

1 Staff numbers before and after institutional mergers

Function	Academic			Non-academic			Total		
	Female	Male	Total	Female	Male	Total	Female	Male	Total
<i>Before mergers</i>									
FT & FFT*	346	880	1 226	932	738	1 670	1 278	1 618	2 896
Casual	41	68	109	24	2	26	65	70	135
Total	387	948	1 335	956	740	1 696	1 343	1 688	3 031
<i>After mergers</i>									
FT & FFT*	505	1 293	1 798	1 253	954	2 207	1 758	2 247	4 005
Casual	97	119	216	70	25	95	167	144	311
Total	602	1 412	2 014	1 323	979	2 302	1 925	2 391	4 316

* Full-time and fractional full-time.

2.1 Institutional mergers – enrolments and student load

Monash University, Chisholm Institute of Technology and the Gippsland Institute of Advanced Education merged in July 1991 to form Monash University. The table below summarises the effects on institutional enrolments of Monash University.

	Enrolments			Total student load
	Male	Female	Total	
Chisholm Institute	5 204	4 557	9 761	7 494
Gippsland Institute	2 037	2 617	4 654	2 899
Monash University	7 946	7 948	1 589	14 060
Total	15 187	15 122	30 309	24 453

2.2 Past course completions 1988/1989

Broad specialisation		Higher degree	Other than higher degree			Total
			Postgraduate	Bachelor	Sub-total	
Arts, Humanities, Social Sciences	1988	37	59	808	867	904
	1989	105	71	771	842	947
Business, Administration, Economics	1988	59	19	463	482	541
	1989	104	15	432	447	551
Education	1988	77	346		346	423
	1989	133	297	0	297	430
Engineering, Surveying	1988	28		178	178	206
	1989	47	1	197	198	245
Health	1988	11		164	164	175
	1989	25	13	180	193	218
Law, Legal Studies	1988	17	21	283	304	321
	1989	11	22	277	299	310
Science	1988	55	12	659	671	726
	1989	59	5	667	672	731
Total	1988	284	457	2 555	3 012	3296
	1989	484	424	2 524	2 948	3432
Number of students for which completions are being reported	1988	284	457	2 524	2 981	3265
Number of students for which completions are being reported	1989	484	424	2 489	2 913	3397

2.3 Enrolments by degree and faculty 1989/1990

Faculty by level	Full-time				Part-time				Total			
	Female		Total		Female		Total		Female		Total	
	1989	1990	1989	1990	1989	1990	1989	1990	1989	1990	1989	1990
Arts (1)												
Higher degree	152	196	286	343	194	216	315	376	346	412	601	719
OTHHD	1 976	2 014	2 732	2 773	651	700	826	965	2 627	2 714	3 558	3 738
Total	2 128	2 210	3 016	3 116	845	916	1 141	1 341	2 973	3 126	4 157	4 457
Arts/Engineering (14)												
Higher degree	0	0	0	0	0	0	0	0	0	0	0	0
OTHHD	3	16	8	31	0	0	0	0	3	16	8	31
Total	3	16	8	31	0	0	0	0	3	16	8	31
Arts/Law (15)												
Higher degree	0	0	0	0	0	0	0	0	0	0	0	0
OTHHD	347	406	510	600	37	35	60	57	384	441	570	657
Total	347	406	510	600	37	35	60	57	384	441	570	657
Economics (2)												
Higher degree	62	69	167	160	87	83	306	345	149	152	473	505
OTHHD	703	760	1 628	1 755	116	128	303	302	819	888	1 931	2 057
Total	765	829	1 795	1 915	203	211	609	647	968	1 040	2 404	2 562
ECOPS/Engineering (24)												
Higher degree	0	0	0	0	0	0	0	0	0	0	0	0
OTHHD	5	7	60	61	0	0	6	4	5	7	66	65
Total	5	7	60	61	0	0	6	4	5	7	66	65
ECOPS/Law (25)												
Higher degree	0	0	0	0	0	0	0	0	0	0	0	0
OTHHD	168	187	459	541	6	3	26	17	174	190	485	558
Total	168	187	459	541	6	3	26	17	174	190	485	558
Education (3)												
Higher degree	109	142	179	226	277	276	440	426	386	418	619	652
OTHHD	164	172	228	249	224	245	286	314	388	417	514	563
Total	273	314	407	475	501	521	726	740	774	835	1 133	1 215



Faculty by level	Full-time				Part-time				Total			
	Female		Total		Female		Total		Female		Total	
	1989	1990	1989	1990	1989	1990	1989	1990	1989	1990	1989	1990
Engineering (4)												
Higher degree	14	14	146	151	10	3	119	111	24	17	265	262
OTHD	116	138	938	1 014	5	9	32	55	121	147	970	1 069
Total	130	152	1084	1 165	15	12	151	166	145	164	1 235	1 331
Engineering/Law (45)												
Higher degree	0	0	0	0	0	0	0	0	0	0	0	0
OTHD	3	2	17	16	0	0	0	1	3	2	17	17
Total	3	2	17	16	0	0	0	1	3	2	17	17
Law (5)												
Higher degree	6	4	26	22	35	37	108	113	41	41	134	135
OTHD	77	83	150	167	53	75	120	132	130	158	270	299
Total	83	87	176	189	88	112	228	245	171	199	404	434
Medicine (6)												
Higher degree	70	115	151	238	77	88	170	173	147	203	321	411
OTHD	370	366	868	862	5	7	11	14	375	373	879	876
Total	440	481	1 019	1 100	82	95	181	187	522	576	1 200	1 287
Science (7)												
Higher degree	73	65	234	232	16	19	62	63	89	84	296	295
OTHD	1 006	1 033	2 095	2 184	119	125	274	261	1 125	1 158	2 369	2 445
Total	1 079	1 098	2 329	2 416	135	144	336	324	1 214	1 242	2 665	2 740
Science/Engineering (74)												
Higher degree	0	0	0	0	0	0	0	0	0	0	0	0
OTHD	38	49	368	395	0	1	4	11	38	50	372	406
Total	38	49	368	395	0	1	4	11	38	50	372	406
Science/Law (75)												
Higher degree	0	0	0	0	0	0	0	0	0	0	0	0
OTHD	52	57	125	129	1	3	4	5	53	60	129	1 34
Total	52	57	125	129	1	3	4	5	53	60	129	1 34
Totals												
Higher degree	486	605	1 189	1 372	696	722	1 520	1 607	1 182	1 327	2 709	2 979
OTHD	5 028	5 290	10 186	10 777	1 217	1 331	1 952	2 138	6 245	6 621	12 138	12 915
Total	5 514	5 895	11 375	12 149	1 913	2 053	3 472	3 745	7 427	7 948	14 847	15 894

2.4 Student load by course 1989/90

1989/1990 load file return to DEET – as at 31 March					
No.	Course code (307)	Course	Faculty	1989 EFTSU	1990 EFTSU
1	0002	Bachelor of Arts	Arts	2 806	2 814
2	0050	Bachelor of Science	Science	2 004	2 002
3	0023	Bachelor of Economics	Ecops	1 612	1 674
4	0032	Bachelor of Engineering	Engineering	932	1 030
5	0040	Bachelor of Medicine & Bachelor of Surgery	Medicine	850	844
6	0080	Bachelor of Arts & Bachelor of Law	Arts/Law	520	620
7	0091	Bachelor of Economics & Bachelor of Law	Ecops/Law	477	568
8	0085	Bachelor of Science & Bachelor of Engineering	Science/Engineering	351	390
9	0078NC	Master of Educational Studies	Education	267	269
10	0028FC/NC	Master of Business Administration	Ecops	257	256
11	0051	Bachelor of Science (Honours)	Science	193	222
12	0017NC	Master of Arts – coursework	Arts	174	204
13	0047N	Doctor of Philosophy Medicine	Medicine	164	201
14	0074N	Diploma in Education	Education	190	194
15	0004	Bachelor of Social Work	Arts	162	179
16	0057N	Doctor of Philosophy Science	Science	162	161
17	0003	Bachelor of Arts (Honours)	Arts	122	128
18	0086	Bachelor of Science & Bachelor of Law	Science/Law	119	127
19	0061	Bachelor of Laws	Law	122	124
20	0017NR	Master of Arts – Research	Arts	103	116
21	0102	Bachelor of Information Systems	Ecops	77	108
22	0055NR	Master of Science – Research	Science	84	89
23	0020N	Doctor of Philosophy Arts	Arts	89	87
24	0037N	Doctor of Philosophy Engineering	Engineering	87	85
25	0079N	Doctor of Philosophy Education	Education	66	79
26	0089	Bachelor of Jurisprudence & Bachelor of Laws	Law	64	76
27	0036NC	Master of Engineering Science – Coursework	Engineering	78	74
28	0083	Bachelor of Economics & Bachelor of Engineering	Ecops/Engineering	64	62
29	0068FR/NR	Master of Laws	Law	71	60
30	0075N	DipEdPsych	Education		62
31	0111N/F	Diploma in TESOL	Education	25	58
32	0118	Cross-Institution Course – Arts	Arts	36	57
33	0056NC	Master of Environmental Science	Arts	38	52
34	0103N	Diploma in Business Systems	Ecops	37	48
35	0036NR	Master of Engineering Science-Research	Engineering	49	45
36	0112NC	Master of Educational Policy & Administration	Education	21	43
37	0110F/N	Diploma in Accounting	Ecops	10	39
38	0073N	Bachelor of Special Education	Education	52	37
39	0072N	Bachelor of Educational Studies	Education	46	37
40	0046NC	Master of Public Health	Medicine	29	37
41	0157	Bachelor of Computer Science & Engineering	Science		37
42	0029N	Doctor of Philosophy Ecops	Ecops	29	35
43	0082	Bachelor of Arts (Hons) and Bachelor of Law (Hons)	Arts/Law	31	33
44	0024	Bachelor of Economics (Honours)	Ecops	28	33
45	0054N	Master of Science (Preliminary)	Science	37	31
46	0114N	Diploma in Australian Tourism	Arts	29	31
47	0158NC	Master of Psychology	Medicine		31
48	0116	Bachelor of Arts & Bachelor of Engineering	Arts/Engineering	8	30
49	0045NC	Master of Psychological Medicine	Medicine	26	27
50	0084	Bachelor of Economics (Honours) & Bachelor of Laws	Ecops		20
		Other courses		595	702
		TOTAL		13 176	14 060

Subject to rounding error

3 Graduates of the University 1990

Graduates 1963–69 are listed in the 1970 Calendar (volume one); Graduates 1970–74 are listed in the 1975 Calendar; Graduates 1975–78 are listed in the 1979 Calendar; Graduates 1979–80 are listed in the 1981 Calendar; Graduates 1981–87 are listed in the Calendar published in the year following the year of graduation; from 1988 Graduates are listed in the Annual Report in the year of graduation.

Doctor of Philosophy (Arts)

Bennett, Elizabeth Jane
Chandler, Glenys Narelle
Cushing, Angela Alice
Fitzpatrick, Peter Henry
Foster, Kevin Dennis
Gamage, Sirisena
Hodge, Roland Errol
Kwasitsu, Lishi
Langfield, Michele Christine
Martin, Susan Kaye
McKenzie, Gwendolyn Mema
Mora, Manolete
Murray, Rosemary Susan
O'Brien, Angela Mary
Rainer, Valina Joyce
Ryzman, Marlene Rochelle
Senawong, Pornpimol
Sjamsuddin, Helius
Song Jae Jung
Storey, Catriona Jean
Tan Sooi Beng
Tasker, Megan Mary
Tiwari, Uma
Wearne, Jennifer Mary
Zion, Lawrence Myer

Master of Arts

Allen, Wendy Frances Diana
Au, Betty Po-Kay
Banks, Lisa Caroline
Batten, Sally Caroline
Bell, Richard Laird
Bolwell, Beth
Bullock, Eileen Lorraine
Cairo, Rosanna
Campbell, Jan Catherine
Campion, Katrina Jane
Carr, Paula Therese
Crooke, Alan John
Crotty, Joel Thomas
Dunkley, Michael John
Eckstein, David Rohan
Ellerington, Kerry Joy
Fuller, Peter Joseph
Germain, Lore
Grabacki, Miroslaw Arthur
Griffiths, Michael
Hawes, Michael Andrew Rhys
Hicks-Williams, Linda Violet
Horrocks, Linley Charles
Houghton, Norman Max
Irving, Estelle Catherine
Kamene, Sakarepe Keosai
Kaur, Pretam
Kinnane, Josephine Jill
Leask, Susan
Leuschner, Ariane
Lockman, Paul Francis
Lowe, John Robert
Lui Kai-Lam, Kavin
Maher, John Joseph
Moryto, Tadeusz
Mrksa, Kresimir
Muhartoyo, T L
Muller, Nicole Mary
Nelson, Eva-Maria
Nunn, Kathryn Evelyn
Okai, Benjamin Christian
Owen, Lesley Marion
Parmenter, Ann Rodgers
Pinda, Monica Rose
Pizaia, Alberto Maria
Poppenbeek, Patricia Marie-Therese
Purvis, Kay Elizabeth
Rudolph, Anne Michelle
Ruth, Julie Anne
Rutter, Anthea Susan
Savage, Robert John
Seddon, Jennifer Marie
Shea, Catherine Mary
Sheehan, Margaret Mary Catherine
Sherwood, Anne Elizabeth
Sloan, Andrew James
Smith, Owen Rolfe
Stahmer, Hazel Doreen

Stewart, Robert Kenneth
Symons, Edelweiss Noreen
Talbot, Dennis Charles
Thom, John Joseph
Thomson, Lisa Margaret
Tomas, Natalie Rose
Wade, Christopher William
Woodgate, Kenneth Bartlett
Yelland, Sheryl
Yeo Lian Bee, Katherine

Master of Environmental Science

Bottomley, Eric
Campbell, Stuart John
Carolan, John Daniel
Cock, Micheal Winston
Davidson, Richard Gengoult
Donnelly, Alister John
Holmes, Noni
Leighy, Robin Lucille
Makowski, Jan Michal
Mill, David John
Mouthaan, Hermanus Karel Alexander
Mueck, Stephen Garry
Newall, Peter Raymond
Rea, Jeanne Elizabeth
Smyth, Robert James
Tacey, Anne Marie
Tao Xiao Wen
White, Lesley Janice

Master of Librarianship

Bender, Jeffrey Saul
Damayani, Ninis Agustini
Gunapala, Matara Arachchillaya
Lugton, Mary Evelyn
Marshall, Denise Marilyn
Steel, Kathryn May

Bachelor of Arts with Honours

Beal, Mary Elizabeth
Berehulak, Anna Stephanie
Borg, Angela
Bousioutas, Rosemary
Brewer, Stephanie Lynne
Brittlebank, Katherine Lucy
Byron, Patricia Anne
Carullo, Stephanie
Casey, Marie-Therese
Casey, Michael Alan
Chin, Jennifer Anne
Clifford, Alison Mary
Cole, Lynette Frances
Collinson, Wendy Elizabeth
Cox, Margret Hilda
Crosbie, Paul Anthony
Cuming, Elizabeth Claire
Davison, Remy Oliver
de Pagny, Jennifer Margaret
Delany, Anita Marianne
Dell, Miriam Blanche
Denning, Nigel Christopher
Derks, Ingrid Magdalena Anne
DiConza, Diana
Evans, Glynis Susan Thorley
Fealy, Gregory John
Ferrari, Christine Elizabeth
Fletcher, Robyn Wendy
Fletcher, Robyn Wendy
Francis, Steven William
Geitenbeek, Monique Denise
Goodsall, Andrew Roger
Gormley, Patricia Mary
Grocott, Claudia Ina-Maria
Grundy, Larissa
Gruszka, Lidia
Haeusler, Peter Edwin
Harle, Katherine Jane
Hinze, Gwenith Alicia
Hore, Natalie Kaye Huon
Inderbitzin, Ivan
Jones, Mary Lucille
Julien, Catherine Christine

Kapel, Michael Abraham
 Keightley, Monica Maria
 Kennett, Jeanette Marie
 Krueger, Reinhold Werner
 Lausch, Elisabeth
 Law, Shirley Anne
 Lawson, Frances Maureen
 Lee, Simon Warner
 Lenshinsky, Judith Rebecca
 Leong, Roger James
 Leong, Roger James
 Lester, Thomas Lionel
 MacDonnell, Sharon Louise
 Mack, Cornelia
 Mandalios, John
 Manning, Angela Grace
 Masters, Robyn June
 McCarthy, John Fitzgerald
 McKane, Anne
 McLean, Ian Andrew
 Meyer, Elizabeth Grace
 Michell, Alexandra Anne
 Michell, Christopher Leonard
 Mora, Teresa Aida
 Morris, Andrew Fenton
 Morrison, Jane
 Murdoch, Yvonne Therese
 Nadolny, Mark
 Norton, Andrew John
 O'Connell, Stephen John
 O'Grady, Glen Keith
 Ong, Chan Wei David
 Orr, William Robert
 Parker, Caroline Heather
 Peard, Julie Narelle
 Pearson, Deborah Jane
 Petrass, Iris Joan
 Pew, Fiona Marion
 Pitt, Joyce Elaine
 Pollard, Celia
 Pollard, Sonya Michelle
 Popley, Maria Melissa
 Popp, Wilhelm
 Raabe, Karen Maria
 Rapson, Virginia Joy
 Roberts, Barbara Anne
 Robinson, Anthony Gerard
 Robinson, Gillian Barbara
 Rosenberg, Craig Daniel
 Scott, Cathrine Ann
 Scott, Jillian Marie
 Shallcross, Jacqueline Maree
 Share, Christopher Patrick
 Steer, Marie Bernadette
 Straszynski, Jadviga Krystyna
 Sturgess, Nancy Ellen
 Taylor, Susan Lorraine
 Thuraiatnam, Sunitha
 Villegas, Immaculada
 Waller, Vivian Gail
 Watts, Caroline Gay
 Weller, Bridget Emily
 Wells, Peter Anthony
 White, Pamela Dawn
 Whiteley, David Andrew
 Wischer, Philip Ian
 Yong Wei Wen, Benedict

Bachelor of Arts

Abel, David Frank
 Adler, Ben
 Agussol, Nathalie Karin
 Alefanti, Vassiliki Konstantina
 Alexander, Brendon Craig
 Alexander, Sharon Louise
 Alexopoulos, Georgina
 Alisak, Fatima
 Allen, Nicole Anne
 Amies, Clare Patricia
 Andriopoulos, Andreas
 Antoniou, Joanna
 Arendsen, Clara Janine
 Argyriou, Peter
 Arter, Jacqueline Mary
 Arthur, Carolyn Maree
 Askew, Margaret
 Astarlis, Effie

Atherton, Rohan Patrick
 Atkinson, Christopher Douglas Stewart
 Atkinson, Katherine
 Auld, Joan Rita
 Balayannis, Arthur
 Baldwin, Julie Ann
 Balla, Amanda Julie
 Banks, Alison Noel
 Barca, Richard Gregory
 Barkehall-Thomas, Susan Jacqueline
 Barker, Kingsley Andrew
 Barnes, Lynda Michelle
 Barratt, Matthew Pierre
 Barrett, John James
 Barrett, William Peter
 Barry, Brendan Laurence
 Bayliss, Caroline Isobel
 Beazley, Matthew Charlton
 Bedford, Louise Marie
 Begg, Alison Margaret
 Bellion, Elizabeth Teresa
 Bennett, Glenn Douglas
 Bennetto, Catherine Mary
 Bijkersma, Michelle Irana
 Binks, Julie Anne
 Birch, Anthony John
 Bisogni, Adrianna Giulia
 Black, Barbara Joan
 Blackmore, Fiona Elizabeth
 Blight, Andrew Thomas
 Bloom, Daniel
 Bloom, Rodney Charles
 Bocanegra, Ricardo Jose
 Boland, Anna Louise
 Bolduan, Mark Atkins
 Borthwick, Michael John
 Bortoluzzi, Dominic Robert
 Boss, Michael Andrew
 Bourekas, Constantina
 Bowles, Howard James
 Bradley, Justine Rae
 Bragg, Catherine Ida
 Brennan, Paula Ann
 Brennan, Rachael Patricia
 Brett, Luisa Francesca
 Bromberger, Susie Michelle
 Brook, Nicholas Maxwell Anderson
 Brooks, Lynne Michelle
 Brothie, Natasha Louise
 Bull, Karen Leigh
 Bult, Georgina Elizabeth
 Burbeck, Liene
 Burch, Meg Louise
 Burke, Mary Jane
 Burrett, Joanne Lee
 Caillard, Peter Henry
 Cain, Ellery John
 Campbell, Neill Francis
 Cancian, Maria-Louisa
 Canning, Eva Raelene
 Carter, Leon James
 Carthew, Alison Jane
 Casper, Steven Mark
 Casson, Teresa
 Cattanaach, Camille Christine
 Cavanagh, Kerry Raelene
 Centofanti, Anna
 Chandler, Sharon Lisa
 Chandler, Vicki Alison
 Charak, Pearl Hanna
 Chataway, Carolyn Maree
 Chau, Michael
 Cho-Shong Chong, Terry
 Christie, Elena Francis
 Christie, Margaret Ann
 Christie, Valda Anne
 Clancy, Patricia Mary
 Clarke, Catherine Maree
 Cochrane, Lynanne
 Cody, Joanna Adrienne
 Cogdon, Melissa Anne
 Cohen, Katrina Norah
 Collins, Nicholas John
 Collyer, Margaret Naomi
 Condos, George
 Connellan, Joseph Micheal
 Coperchini, Daniela Marina
 Cornwell, Grace
 Cousland, Robert Mckay

Cox, Michael John
 Cox, William David
 Crilly, Ruth Kristine
 Croce, Gina
 Cross, David Anthony
 Crotty, Joel Thomas
 Crowe, Annabel Louise
 Crowe, Benedict Joseph
 Crowe, Elizabeth Maria
 Crowley, Paul Francis
 Curtain, Judith Mary
 Curtis, David Peter
 D'Alessandro, Marisa
 Dahl, Gitte Elaine
 Dahlsen, Geoffrey Christian
 Dalamagas, Vicky
 Daniels, Elisabeth Melinda
 Davenport, Marcus John
 Davey, Alicia Jane
 Davey, Bruce Cameron
 David, Samuel Stephen
 Davis, Kara Dawn
 Dawson, Amanda Julia
 De Iulio, Fiona
 De Pedro, Alicia
 de Niese, Carmen Joan
 Dean, Lynette Faye
 Degiovine, Patricia Ivana
 Delahunty, Brendan Paul
 Demicoli, Andrew Paul
 Dimas, Angela
 Dimopoulos, Fany
 Distefano, Rosetta
 Dodds, Brian William
 Dods, Alison Heather
 Doherty, Michelle Linda
 Douglas, Kirsty Jean Stuart
 Dounas-Glykokalamos, Vassiliki
 Dowling, Sophie Caroline
 Drobotiuk, Tania Helen
 Duke, Adam Gordon
 Duke, Kathryn Ellen
 Dunscombe, Imke Kordula
 Dwyer, Bridget Philippa
 Edmondson, Mark
 Edwards, Maree Elizabeth
 Ellenport, Deborah Ruth
 Evangelou, Helena
 Evans, Ilsa Christine
 Fahey, Lauren Samantha
 Feroce, Maria Santana
 Fink, Naomi
 Fiorenza, Antonella
 Fisher, Robert Bruce
 Flanagan, Kimberley Jane
 Fleet, Antony Charles
 Folliard, Gabrielle Mary
 Fong Lu-Chin
 Forsyth, Annabel Kate
 Fortune, Bernice Ingrid
 Franes, Jim
 Franes, Maria
 Frazer, Janette Mary
 Freeman, Mark Andrew
 Freer, Elizabeth Jane
 French, Robert Gregory
 Friedrich, Timothy Charles
 Fry, Robyn Anne
 Gabriel, Kelly-Anne
 Galanis, Anthia
 Gallagher, Heather Maree
 Gandur, Judy
 Gatsios, Freda
 Gattuso, Timothy Frederick
 Gault, Samantha
 Gay, Michelle Millicent
 Gedge, Deanne Nicole
 George, Cameron McDonald
 Georgiades, Christina
 Geremia, Gabrielle Marie
 Giannopoulos, Garifalia
 Giannopoulos, Penelope
 Gibbs, Anne Veronica
 Gibbs, Florence Marjorie
 Gill, Kerry Ann
 Glickfeld, Jonathan
 Gojak, Melissa Jane
 Goldberg, Daniella
 Goldman, Samantha Anne

Gort, Alison
 Gounas, Taanya Maree
 Gow, Michelle Alison
 Grammenos, Georgia
 Grant, Julie Anne
 Grech, Marita Antoinette
 Green, Jennifer Anne
 Green, Tracey Louise
 Gregg, Rosalind Jean
 Gregory, Leigh David
 Gridas, Soula
 Griffin, Paul Richard
 Groves, Ursula Jane
 Guglielmino, Patricia Robyn
 Guzzardi, Giuseppina
 Haby, Diana June
 Halford, Vikki Elizabeth
 Hall, Kylie Symone
 Hancock, David John
 Hansen, Karl Bendix
 Hansen, Linda Marian
 Hardy, Sean Patrick Glynn
 Hargrave, Shiela
 Hargreaves, Mandy Joy
 Harman, Philip Alexander
 Harris, Leanne May
 Harris, Lynne Catherine
 Harris, Pamela Roslyn
 Harris, Sally Anne
 Hatch, Mary Louise
 Hatzis, John
 Hawkins, Annabel, Mary
 Hayward, Paige Elizabeth
 Hazell, Anita Stella Marta
 Heath, Kelly Anne
 Hellier, Allison Marie
 Henderson, Fiona Jayne
 Henry, Timothy John
 Hewlett, Lindy Louise
 Hill, Vicki
 Hipwell, Gregory Hugh
 Hirsch, Alexandra Bianca
 Hodgson, Judith Ann
 Holgar, Madeleine Ann Marie
 Hollis, Sharon Joy
 Holt, Miranda June
 Hourigan, Martin John
 Hunt, Lisa Jane
 Hyams, Jamie
 Ilbery, Anita May
 Ioannidis, Alexandra
 Irving, Robert Martin Howy
 Isaakidis, Fotene Gesthimane
 Ives, Michael James
 Jagas, Sylvia
 Jansen, Marina Elizabeth
 Jefferies, Debra Lyn
 Jennings, Kathryn Betty
 Jesudason, Patricia Lilian
 Johnson, Jeremy Ludvig
 Johnson, Margot Elizabeth
 Jones, Merren Alison
 Jones, Nicole Lee
 Jones, Susan Patricia
 Joyce, Megan Therese
 Junkaris, Andrea Rose-Marie
 Kalomiris, Evdokia
 Kambouris, Georgina Mary
 Kamevaar, Felicity Wilga
 Kancachian, Nicole Antoinette
 Kane, Zev Vladimir
 Kanost, Heather Hermina
 Kapourelakos, Soula Athanasia
 Karafinas, Kathy
 Karanzoulis, Nicholas Steven
 Kariotis, Regina Elizabeth
 Karvelis, Athena
 Katrantzis, Doxa
 Katsaris, Voula
 Kay, Cheryl Dianne
 Keenan, Joanne Elizabeth
 Kehagias, Mary
 Keil, Peter Paul
 Kellam, Geoffrey Terence
 Kelliher, Patricia Frances
 Kelmann, Marilyn
 Kelsall, John Brinsley
 Keren, Marika Noemi
 Kernich, Margaret Grace

Kershaw, Ann
 Khademy Deljo, Shiva
 Khazam, Sandra Michelle
 Killackey, Carmel Mary
 King, Fiona Louise
 Kirkles, Margaret
 Kirkwood, Deborah Anne
 Klinger, Katherine Marie
 Knowles, Gregory Paul
 Knowles, Narelle Joy
 Kocalidis, Peter
 Koelmeyer, Jane Carin
 Koelmeyer, Liesel Anne
 Korosidis, Elpis
 Kostoulas, Spiroula
 Koumouris, Mary
 Kourbetis, Stelios
 Kourmozis, Anthea
 Kriesner, Kirsten Olivia
 Krznaric, Djurdjica
 Kusunoki, Rieko
 Kyriacou, Despina
 Kyriacou, Paros
 Lane, Patricia
 Lane, Thomas Adami
 Langenberg, Dean Gregory
 Lanteri, Sandra Grace Tiana
 Larke, Raelene Margaret
 Latchford, Gail Elizabeth
 Latham, Cynthia Jayne
 Lee Ting Yin
 Leed, Joanne Karen
 Legakis, Kalliope
 Leonard, Alison Mary
 Leow Poh Suan, Susanna
 Liolios, Nicholas
 Leonart, Greta
 Llewellyn, Matthew Hopker
 Lloyd, Benjamin Jeffry
 Lloyd, Phillip John
 Lo, James Kuin-Chuan
 Loewy, Joanne Nicole
 Lofstock-Machlis, Avital
 Loiacono, Elizabeth Rita
 Long, David Jonathan
 Lonie, Scot Hay
 Luke, Pauline Rose
 Lynton, Sarah Jennifer
 Lyons, Nicholas John
 MacFarlane, Ena Mavis
 MacKenzie, Elizabeth Anne
 MacLean, Wendy-Grace
 Madytianos, Athena
 Magennis, Joshua Luke
 Maguire, Stephanie Gay
 Mah Siew-Yan
 Malkin, Carolyn Jane
 Mancev, Michael
 Manchee, Mark Richard
 Manos, Linda
 Marangoni, Laura Pauline
 Marcou, Penny Jeanette
 Marinakis, George
 Marks, Ralph Patrick
 Marsch, Diane Rebecca
 Marshall, Barbara
 Martin, Gary Francis
 Masetto, Tony Dal
 Mastos, Helen
 Mastrovasilis, Angela
 Matina, Domenica
 Mazarakis, Kathy
 McAlister, Kay Marie
 McDonough, Laura Janette
 McFarlane, Kate Mary-Anne
 McGaffin, Sofia Anne
 McGarvie, Ann Judith
 McGregor, Michele Elise
 McGurk, Kerry Frances
 McIvor, Catherine Jean
 McIvor, Alison Maree
 McMahon, Carmel Jane
 McNamara, Katherine Anne
 Medina, Frances Margaret
 Mellett, Joan Helen
 Mercer, Alison Mary
 Metcalf, Josephine Emily
 Midgley, Graeme Charles
 Milani, Gerry John

Milburn, Glynne Anne
 Miles, Ian Nicholas
 Miller, Ann Marie
 Miller, Christine Andrea
 Miller, Steven Paul
 Millie, Julian Patrick
 Millsom, Andrea Elisabeth
 Mimilas, Sue
 Minisini, Enio Michael
 Mitchell, Grant Lawrence
 Moffat, David John
 Mollett, Stephen Graham
 Monahan, John
 Moody, David John
 Moore, Ceri Anne
 Moore, Melissa Jane
 Morgan, David Thomas
 Morgan, Jill Margaret
 Morrish, Rebecca Anne
 Morrissey, Noni Margaret
 Moutafis, Nicholas
 Moylan, Michelle Anne
 Muldoon, Michael Francis
 Murphy, Paula Majella
 Murray, Helen Jane
 Muschialli, Ronald Anthony
 Nancarrow, Michele Helene
 Neilson, Elizabeth Leslie
 Nelson-Gracie, Kerry Jean
 Nevein, Antoine Alida Olga
 Newman, Jason Rossiter
 Ng, Canny
 Ng, Wendy
 Niall, Emma Josephine
 Nichols, Paul Jeffrey
 Nielsen, Steven Anthony
 Nott, Ian Morgan
 Nowlan, Brenda Anne
 O'Brien, Julie Marion
 O'Brien, Kieran John
 O'Dowd, Peter Andrew
 O'Halloran, Alexandra Frances
 O'Sullivan, Joanne Louise
 Oakley, Samantha Jane
 Oliaro, Louise
 Ong, Irene Wai Leen
 Orgill, Samantha Gale
 Orłowski, Stefan
 Ortner, Christine Amanda
 Panagopoulos, George Constantine
 Panichi, Luisa Jole
 Panoutsos, Katerina
 Papadimitriou, Sophie
 Papadimos, Helen
 Papairaklis, Athanasios
 Paprica, Susan
 Parker, Jean Black
 Parker, Madeleine Claire
 Patisteas, Sandy Helen
 Patkin, Carolyn Louise
 Pawlicka, Anneliese Joy
 Paynter, Katherine Margaret
 Pekar, Myra
 Pellow, Alison Jean
 Penney, Timothy David
 Pentland, Elizabeth
 Pereira, Anne Marina
 Peters, Diana Marie
 Pezzaniti, Eleonora
 Phyland, Andrew Peter
 Pickering, Pamela Joy
 Pierce, Katherine Therese
 Pigdon, Fiona Lorraine
 Pilbrow, Johnathan James
 Plotkin, Anna
 Portelli, Gabrielle Katherine Grace
 Potasz, Lisa Amy
 Poulter, Lisa Jacqueline
 Power, Mikaela Catherine
 Prattis, Georgina
 Prentice, Deborah Christine
 Purcell, David Joseph Nicolas
 Pusterla, Pauline Antonia
 Pyeon Sung-Eui
 Pyke, Natale Jane
 Pytharoulis, Georgia
 Quinn, Anne
 Quirk, Robyn Leanne
 Quirk, Simon Philip William

Quither, John
 Ramsay, Carolyn Mei
 Rayson, Catherine Mary
 Rea, Brendan Thomas
 Regan, Andrew Justin
 Reilly, Madeline Ann
 Rest, Christina
 Ridsdale, Kelli Anne
 Ritchie, Lisa Michelle
 Robertson, Colin Henry Melville
 Robertson, Matthew John Edward
 Robins, Sharon Lea
 Robinson, Andrew Gregory Elliston
 Robinson, Daniela Helen
 Robinson, Jennifer Elaine
 Rocka, Elizabeth Helena
 Rogan, Anne Margaret
 Rose, Catherine Mary
 Rosham, Toby
 Ross, Bersy Harris
 Ross, David Murray
 Roufail, Nancy
 Routley, Richard Austin
 Rouvalis, Anthea
 Rowe, Therese Ellen
 Royle, Julia Caroline
 Ruehr, Brigitte Ingrid Elisabeth
 Russell, Sarah Elizabeth
 Russell, Susan Elizabeth
 Ryan, Andrew David
 Ryan, Jacqueline Marie
 Rzechowka, Magdalen
 Safiratos, Bessie
 Sanders, Erica Billington
 Saunders, Elizabeth
 Savaidis, Fay
 Sawczak, Helen Christine
 Scambary, Benedict John
 Schmutter, Mark Robert
 Schultz, Jennifer Anne
 Scott, Robert John
 Scully, Mary Ellen
 Seaward, Barbara Jayne
 Seddon, Olivia Rachel
 Seedsman, Rachel Louise
 Seitanidis, Helen
 Seow See Ming
 Sharp, Ilana Estelle
 Shinohoritou, Panagioti
 Siarkiewicz, Dorota
 Sim, Dorothy
 Simonsen, Mogens Raymond
 Simos, Tina
 Sinnott, Joanne Louise
 Siregar, Ratih
 Skinner, Patricia Margaret
 Skourides, Christine
 Slavin, Elizabeth Anne
 Slavutin, Irene
 Smith, Jeremy Linus
 Smith, Marcus John
 Smith, Michael John
 Smith, Paul Joseph
 Smith, Samantha Jane
 Smith, Stephen William
 Somogyi, Carol Anne
 Sonderhof, Jane Louise
 Soukos, Theodora
 Soulsby, John Noble
 Southin, Adelaide Lilian
 Sperandio, Debbie
 Spiers, Jonathan Paul
 Staples, Christine Anne
 Staropoli, Maria
 Stavropoulos, Christine
 Steiner, Sonja Pamela
 Stephens, Penelope Anne
 Steverlynck, Dominic Maria
 Stinear, Virginia Jane
 Stone, Andrew Colin
 Stratmann, Mark Francis
 Stronell, Caitlin Elizabeth
 Strover, David Alan
 Stylianou, Maria
 Suchecki, Maurice Marcel
 Suei-Chiun Lin, Daphne
 Sullang, Freddy
 Sutherland, Fiona Catherine
 Sutherland, Paul John

Sutherland, Samantha Elizabeth
 Svendsen, Helga
 Sweeney, Donna Frances Lucia
 Sweeney, Elizabeth Joyce
 Tandy, Melissa Jane
 Taurua, Meredith Ann
 Taylor, Fred William
 Taylor, Marietta Bernadetta Geertruida
 Teh, Wee Nee
 Telford, Fiona Mary
 Terniotis, Theodora
 Theodore, Carolyn Barbara
 Theoharis, Maria
 Thomas, Joanne Michelle
 Thomas, Joanne Winifred
 Thomson, Lisa Jane
 Tierney, Heidi Louise
 Tiganis, Mary
 Tilson-Rees, Juliet Emily
 Tokatlian, Nicole Marie
 Tozer, Deirdre Leah
 Trainor, Kate Amelia
 Triandafillidis, Vivien Antonietta
 Triantafillopoulos, Nicholas
 Trickey, Jane Ann
 Trotter, Georgia Kaye
 Truman, Dirk Anthony
 Tupcienko, Margarita Irena
 Turnbull, Jillian Margaret
 Vainomae-Hoffmann, Linda Ann
 Van Dyke, Yvonne Caroline
 Varsamidis, Magda
 Vengust, Melita Ann
 Verhagen, Darrin Sean
 Vernal, Lynette Beryl
 Verspaandonk, Andrew Josh
 Viskich, Sophie Kathleen
 Vivoda, Tania Anne
 Voudouris, Meropi
 Waddington, Deborah Anne
 Walker, Michelle Ann
 Walker, Sarah Margaret
 Wearne, Bernice Mary
 Wearne, Katy
 Webb, Juimanne Richardson
 Webb, Susan Margaret
 Weinberger, Nancy
 Weir, Moana
 Weller, Torsten Alf
 Welsh, Fiona Lee
 Wheeler, Prudence Jane
 White, Jane Louise
 Whitehouse, Genevieve Uelya
 Widdicombe, Tonia Margaret
 Wilke, Karen Nicole
 Wilkinson, Angela Jane
 Wilksch, Christine Elizabeth
 Willaton, Claire Therese
 Williams, Fiona Maree
 Wilson, Betty Ann Halpern
 Wilson, Carrie Jane
 Wilton, Anne-Louise
 Winter, Colin Kenneth
 Winter, Dawn Marie
 Winton-Smith, Tania Maree
 Wolters, Catherine Anne
 Wong, Melinda Wai-Kwan
 Wood, Jane Elizabeth
 Worme, Trudy Anne
 Wotley, Rebecca Ann
 Wraith, Lachlan Daryl
 Yildiz, Reyhan
 Young, Fiona Maree
 Young, Jodie Melinda
 Zacharidis, Steven
 Zipkas, Karen Lee

Bachelor of Social Work with Honours

Dix, Antoinette Maria
 Flynn, Catherine Anne
 Kersey, Roger Charles
 Mason, Jan Elizabeth
 O'Brien, Julie Marion
 Russell, Mark James

Bachelor of Social Work

Alisandratos, Argiri
 Bakos, Jane Margaret
 Barnett, Keren Sarah
 Barrie, Sharon Heather
 Berg, Cilla
 Blum, Miriam Sharona
 Bruce, Angela Mary
 Cambourne, Trina Rae
 Dennis, Bronwen Gaye
 Douvos, Tina
 Forster, Rosemary Gwenyth
 Gaddie, Elaine Merle
 Galante, Mema Anne
 Gondor, Ilona
 Grant, Barbara
 Jameson, Richard John
 Lee, Jeanette
 Marriott, Anne
 Musumeci, Pamela
 Nayler, David Scott
 Noonan, Mark Rainbow
 O'Neill, Joanne
 O'Neill, Rhonda Gale
 Pappaioannou, Vicky
 Pipakis, Despina
 Pratt, Ann Marie
 Ralton, Ellyane Gaye
 Roet, Carole Sue
 Semple, Loris Joan
 Sheehan, Darren Andrew
 Skondreas, Mary
 Sposaro, Marisa
 Stephens, Hanna May
 Strickland, Vicki

Doctor of Philosophy (Economics & Politics)

Farfalla, Aldo
 Khaidir-Anwar, Dewi Fortuna
 Moshirian, Fariborz

Master of Administration

Bronk, Graham Phillip

Master of Business Administration

Alston, Richard Kenneth Robert
 Alway, Lesley Rose Louise
 Anderson, Alastair Andrew
 Ang Aik Pin
 Angus, David John Finlay
 Arambewela, Rodney Amarasinghe
 Arblaster, Margaret Peta
 Bailey, Graeme Charles
 Baker, John Henry
 Barut, Meropy
 Bazzani, Robert John
 Bennington, Lynnette Anne
 Berizzi, Steven George
 Bevege, Jane Ellen
 Blackwell, Bruce Arnold
 Boal, Trevor John
 Brewer, Michael
 Chandrajit, Thiagarajah
 Cheng Po-Ling, Alan
 Chung Hing Hing
 Clarke, Brian Ashmore
 Cook, Jennifer Anne
 Crawford, Russell Raymond
 Darby, Jennifer Lynne
 De Silva, Christopher Jehan
 Donald, Christopher Thomas
 Drosdowsky, Lynda Murray
 Edmonds, John Arthur Gerard
 Fong, Martin
 Foott, David Leslie
 French, Glenys Lesley
 Fronsco, Andrew Leigh
 Gleason, Gregory Charles
 Gleason, James Alan

Goh Choh Chng
Grossbard, Alain Maurice
Happell, Stephen John
Harris, Garry Donald
Harry, Carol Ann
Hayes, Geoffrey David
Hoare, Rodney Tytler
Holloway, Barrie Gordon
Horner, Mark James
Hughes, Norman
James, Maurice Alan
Jenkins, Valerie Lorraine
Jones, Bronwyn Margaret
Julian, John Crighton
Kam Lai-Fong
Kane, Eveline Maria
Kelly, Brian Gerard
Kenny, Thomas Kevin
Knapp, Jeremy Simon
Knight, Christopher
Kowalski, Richard Joseph
Lazaro, Ashley Lawrence
Lendon, Alison
Leung, Ying Keung
Lim Hun Chye, Allen
Lim, Robert Sau Tak
Low Hai Kiong
Manomaithamrongkul, Supan
Maslen, Janet Rose
Mazid, A K M Abdul
McLaren, John Andrew Inglis
Midire, Miriam
Mikhailov, Alexander
Monkhouse, Peter Herbert Lloyd
Na Ranong, Chula
Nadarajah, Vijayam
Nakamura, Masaaki
Newnham, Geoffrey William
Ng Bee Kim
Ng Chun Sun
Ng Guan Hai, Robert
Ng Tat On
Ngian, Kian-Fah
Nickson, George Randall
O'Connor, Pamela Anne
O'Donoghue, Michael Francis
Pacheco, Climacus Marcelino
Pereira, Joseph Errol
Pik Yee Foong
Poh Lay Bin
Powell, Michael Francis
Preston, Robert Kingsley
Rodrigues, Darryl Mark
Ryan, David Michael
Sandys, Peter Raymond
Sharples, Judy Louise
Shaw-Dennis, Philip Stephen
Shivasabesan, Kalaichelvi
Situ Yan
Sleep, Lesley-Anne
Somaia, Hiten Anil
Speer, Katerina
Sturdy, John George
Suparyadi, Ruddy
Talbot, Dorothy Anne
Tan Bong Loo
Tan, Betty Siew Geok
Tobin, Margaret Julia
Topas, Hamzah
Tranakou, Olga
Trigg, David
Trigg, Marie Catherine
Tze Kuen Leung
Van Dyk, Rene
Vongchaiprasert, Veena
Walter, John McIntosh
Walters, Roger John
Warner-Reid, Jania Catherine
Welsford, John Andrew
Weng Chiew Wong, Aaron
Williams, Mark Andrew
Yee, Seng Joo
Zablud, Susan

Master of Economics

Brailsford, Timothy John
Bull, Malcolm Charles

Chang Wing Fu, Stephen
Dheerasinghe, Rupa
Gay, Grant Edmund
Jin-Ho Park
Smarrelli, Pasqualina
Tilley, Paul Anthony

Master of Management

Chen Jia Gang
Goon Wui-Yeang
Lam Chow Hung, Ashley
Ruby, Elizabeth

Bachelor of Economics with Honours

Apostolou, Konstantinos
Bierenbroodspot, Frederik Hendrik
Cahill, Juliet Rosalie
Chang Ming Jen
Corden, Simon Charles
Cullen, Peter Esmond
Denis, Sandra Stephanie
Fan Kah Seong
Foo, Geraldine Amy
Gibbons, Patrick Ross
Gray, Kevin Vincent
Grigoriou, Fani
Grigoriou, Jim
Grose, Simone Deborah
Hantzis, Niki
Ho Yew Kee
Hristodoulidis, Con
Judkins, Andrew Peter
Kalamias, Sofia
Lee Kin Seng
Lee Mei Ling, Joyce
Loh Chee Yong
Moore, Steven James
Power, Charles Maclean
Roberts, John Graham
Ryan, Janet Margaret
See Siok Kim
Stepan, Sasha Sally-Anne
Tan Swee Liang
Teo Geck Lin, Caroline
Vogel, Gary Franz
Wright, James Carrington
Yap Chin Yee

Bachelor of Economics

Acton, Eric Christophe
Adam, Catherine Elizabeth
Adams, David John
Agisilaou, Angelo
Aguilar, Luis Alberto
Allan, Meredith Margaret
Allen, David Martin
Allen, Kathryn Elizabeth
Amoore, Kerrie Anne
Andritsos, John
Ang, Cheung Yick
Annesley, Breda Mary
Archibald, Tania Jillian
Arendsen, Hendrik Anthony
Arriagada, Ernest Joseph
Arvanitis, George
Ash, Vanessa Maria
Ashkenazy, Melinda Ruth
Axton, Mark William
Ayton, Jeffrey Michael
Backwell, Peter Leslie
Bain, Yen Foon
Baker, Kathryn Anne
Bakker, Craig Robert
Baldassarre, Mark Quin
Barlow, Lucie-Jane
Barnes, Jamie
Barrah, Andrew
Barry, Vivianne May
Beard, Angela Michelle
Beattie, Colin Jay
Bella, Adriana

Beng Tatt Lim
Bennetts, Peter Gordon
Berger, Doron Ashley
Biggs, Phillip Keith
Billings, Jacqueline Annette
Birkett, Richard Gerald
Boothman, Warren Bradley
Bourke, Patrick Leo
Boyle, Wendy Elizabeth
Bratulic, Patricia Anne Leonora
Brennand, Robert Paul
Bromhead, Thomas Ross
Brott, Tamara Deborah
Bungur, Myra
Burke, Michele Frances
Burkinshaw, Kelly Louise
Cafari, Anthony
Carr, Anthony Mark
Cavalleri, Davide Joseph
Cetrola, Frank
Chan, Kim Han Lowana
Chang, Margot Min
Chang, Tat Joel
Cheong Chee Siong
Cheung, Mang Chau
Chew Cheng Im, Anita
Chiang Lee Hong
Chin Kong Meng
Chin, Ai-Lin
Choon, Siew Thong
Choong Soo Ming
Choy Bing Jye
Chua, Hak Yee
Cichorski, Michael Edward
Clark, Rhonda Michelle
Coakley, Stephen John
Cody, Liam Francis Meldrum
Cole, Kimberley Michelle
Collins, Vivienne Elizabeth
Constable, Michael Scott
Cooper, Michael Andrew
Coote, Gavin Donald
Copley, Joanne Maree Therese
Costaras, Gregory
Costigan, Francis Xavier
Crivelli, Loredana
Crosse, Paul Johnathon
Crowe, Damian John
Cupit, Dwight Nicholas
D'Arcy-Irvine, Monique Jane
Daff, Paul James
Davis, Andrew Lawrence
Davis, Heather Patricia
Davis, Rohan Matthew
Davison, Stuart Jeremy
Dearnaley, Stephen Michael-Andrew
Denholm, Andrea Joy
Deppeler, Nicholas David
Dessiniotis, Stavroula
Diviny, Philip Gerard
Dolkas, Panagiotis
Dolling, Andrew James
Doquile, Matthew Thomas
Dowel, Donald Bruce
Dowling, Patrick Lyndsay
Drioli, Patricia
Dunn, Anthony Lawrence
Dwyer, Walter Norman
Edhouse, Bryce John
Edney, Benjamin Calder
Edwards, Peter Robert
Eu Beng Peen
Evagorou, Evan
Evans, Cameron John
Evans, Sandra
Ewart, Catherine Megan
Ferguson, Suzanne Mary
Finlayson, Craig William
Foo Sook Ching, Karen
Forgione, Michele
Formosa, Josephine
Freeman, Mark Samuel
Friday, Euan James
Frood, Timothy John
Gabriel, Susan Mary
Gaitanidis, Stella
Gan Hai-Toh
Gan Tsue Ling
Gannon, Wayne David

Gardner, Christopher Paul
 Gavralas, Fanis
 Gazecki, Jarek Wojtek
 Gee, David Oong
 Gehrig, Charlene Therese
 Gelman, Alla
 Giasoumi, Con
 Gibney, David Joseph
 Giesner, Mei Earn
 Gilbert, Karen Mary Ann
 Gild, Shane Robert Joseph
 Glisson, Jennifer Kelly
 Gniam Kah-Choo
 Gonsalvez, Annette Monica
 Gordon, Jamie Stuart
 Graham, Campbell Robert
 Granger, Anne-Maree
 Graven, Mark George
 Green, Peter Gerard
 Greenwood, Nicola Ann
 Griffith, Michelle Jane
 Gully, James John
 Gutasukas, Roger John
 Halperin, Emilia
 Hamilton, Peter Raymond
 Hand, David Morrell
 Harris, Justin Andrew
 Hashim, Shamsidar
 Hayden, Troy John
 He Lip Bu
 Heathcote, Colin Martin
 Hew, Yoon Siu
 Hinds, Nicole Jodie
 Ho Sai Weng
 Hoban, Daniel Thomas
 Hoh Yoon Choong, Alexander
 Holland, Craig John
 Hon Ing Lim
 Hondrakis, Billy
 Hooper, John Christopher
 Houghton, Micaela Joy
 Houlihan, John Francis
 Huggins, Lisanne Jane
 Hughes, Wendy Alexandra
 Hunter, Andrew Paul
 Hutton, Peter James
 Hwang Mei Lyn
 Ingwersen, Susan Elizabeth
 Iozzi, Robert Ralph
 Jack, Kenneth Andrew
 Jacobs, Martyn Peter
 Jacobson, Andrew Mark
 Jaffar, Jolina
 Jansen, Kirsten Janet
 Jaques, Julianne Elizabeth
 Jarman, Jennifer Elizabeth
 Jessup, Phillip Andrew
 Jonas, Louise Marie
 Joyce, Petrina Simone
 Judd, Paula Leanne
 Kalman, Harvey Hillary
 Kalman, Lisa Nahama
 Kamarulzaman, Noor Deeni
 Kanat, Jonathan David
 Kanost, Laurel Katrina
 Karagiannakis, Magdolini
 Katopodis, Nicholas
 Khoo Guat Eean
 Khoo Sui Cheng
 Kibel, Adam Johnson
 Kidson, Susan Jillian
 King, John Francis
 King, Tim Duff
 Kingwell, Matthew James
 Klempfner, David Andrew
 Klimanec, Peter Martin
 Klose, Mark James
 Knapsey, Katherine Isabel
 Knight, Rodney Michael
 Kollias, David John
 Kong, John Lip
 Konstantinou, Serafim
 Konynenburg, Joseph Adrian
 Koop, Jonathon Charles
 Kotsa, Sally
 Kovacevic, Julie Anne
 Kreveld, Stephen Adam
 Krishnan, Ravi Subramaniam
 Krzywniak, Andrew Michael Lech

Kularajah, Kalarani
 Kwong, Goh Tok
 Lam, Eleanor Sin Chee
 Lam, Sze Wai
 Landau, John Howard
 Landis, Mark Rodney
 Lau Dee Dee
 Lau Keng Lim
 Lau, Susan Lai-Ling
 Lawford, David Ian
 Lee Che Chiu
 Lee Kwai Sim
 Lee Mun Yee
 Lee Pey Shi
 Lee Yuet Yin
 Leftis, Annette
 Leong, Elin
 Leopold, Brett Frederick
 Leung Oi Ling, Amy
 Levi, Amanda May
 Lew Kok Cheong
 Lewenberg, Vivien Monica
 Lhuede, Michael Edward
 Liew Huey Cherg
 Lim Kian Fah
 Lim Lai Quen
 Lim, Charles Ching
 Linahan Andrew John
 Lipkies, Gidon Tuvia
 Lo Kin Cheong
 Lou Juan Suan
 Love, Anthony George
 Lund, Sarah Ann
 MacDonald, Paul Robert
 MacIsaac, Bruce Wauchope
 MacLean, Ian Andrew Neil
 Mak, Stella Wing-Yin
 Mansfield, Rohan Gerard
 Maric, Zvonko
 Martin, James Michael
 Mason, Grant Richard
 Matthews, Suzanne Diane
 McCarthy, Jeremy Patrick
 McCarthy, Susan Jane
 McCluskey, Deborah Ann
 McCormack, Michael Joseph
 McDonough, John Robert
 McKenna, Wayne Francis
 McMahon, Catherine Veronica
 McMillan, Stuart Andrew
 McOmish, Richard Donald
 Mellos, Nick
 Menta, Josephine
 Miller, Graeme Evan
 Mirovics, Lia Fiona
 Mitchell, Craig Andrew
 Mitsou, George
 Mohamed, Hafizah
 Molnar, Penelope Jane
 Molnar, Theresa Michelle Gereda
 Moran, Zeina Therese
 Morris, Amanda Louise
 Morris, Vicki Louise
 Murphy, Geoffrey Thomas
 Myint, Juliana
 Nagarajah, Santhosh
 Nankivell, John Howard
 Nankivell, Robert Leonard
 Nelson, Simon Patrick
 Neve, Timothy Keith
 Newnham, John Martin
 Ng Bee Ching
 Ng Hock-Heng, Kelvin
 Ng Pek Lian
 Ng Saw Ean, Sharon
 Ng, Weng Yew David
 Ngan Wai Yuen, Jasper
 Niall, Benjamin Patrick
 Nicolopoulos, John
 Nolan, David Michael
 Noonan, Melissa Leanne
 O'Brien, Craig Stuart
 O'Keefe, David
 O'Shannassy, Paul Gerard
 Oinonen, Karl
 Olson, Phillip Nils
 Ong Hui Hui
 Ongley, Jacqueline Lea
 Orow, Nabil Fouad

Orow, Nabil Fouad
 Pakula, Martin Philip
 Pang Teng Wah
 Papastergiadis, Bill
 Parton, Andrew Ian MacLeod
 Pech Sae Wang
 Penney, Heather Jane
 Perree, Anthony Charles
 Perry, Paul Anthony
 Petaroudas, George
 Peters, Judith Anne
 Petrovic, Christina Michelle
 Pfund, Roger
 Poletti, Fiona Louise
 Pound, Damien Jon
 Power, Michelle Shannon
 Prior, Georgina Lesley
 Pun, Tian Pouw
 Quinn, Stephanie Maria
 Raj, Karuna
 Ramiah, Kasinathan
 Raymond, Mark James
 Raymond, Nikhil
 Read, Ian Leonard
 Reckenberg, David William
 Rennie, Margaret
 Reynolds, Alison Jane
 Richardson, Jeffrey Neil
 Richardson, Melinda Anne
 Robertson, Mark Andrew
 Robinson, Terry Llewellyn
 Rodrigues, Lorraine Barbara
 Rodwell, Helen Jane
 Rodwell, Simon Nicholas
 Rogers, Adrian John
 Roseman, Mark Andrew
 Rosenberg, Emma Louise
 Rowlands, Rebecca Anne
 Rozario, Agnes Kim
 Rubinstein, Peter Irwin
 Rullo, Rocco
 Salmons, Theresa Marie
 Sandford, Darren Peter
 Santi, Fulvio
 Sarra, Simon
 Saw Mei Lin
 Scott, Kirsten Margaret
 Scott, Raymond Victor
 See Siok Hong
 Shady, James Rayner
 Shapiro, Amanda
 Sharpley, Helen Christine
 Shields, Peter Neil
 Shu Pui Tam
 Siarabalos, Vicky
 Siggins, Joanne Marie
 Simian, Claudia Maria
 Sirkos, Evangelos
 Sita, Domenic Carmelo
 Skinner, Stephen John
 Smith, Timothy Peter
 Sonnemann, Matthew John
 Soo Lai Choong, Lawrence
 Soong Chung Wai
 Stares, David Andrew
 Starvaggi, Jennifer Grace
 Steart, Janelle Irene
 Stehle, Belinda Carol
 Stone, Elizabeth Jane
 Stramotas, Terry Theodore
 Sutherland, Damian Sean
 Sutton, Robert James
 Sze To Yuen Yin
 Tadgell, Hamish Robert
 Tai Lai Kok
 Tai Soek Meng, May
 Tan Chee Ling
 Tan Kim Lian
 Tan Mui Kim
 Tan Zhoo Gek, Judy
 Tan, Andrew Chee-Leng
 Tan, Li-Leen
 Tate, Andrew Melford
 Taussig, Caroline Leah
 Tee Mong San
 Teh, Eng Lee
 Tekin, Serpil
 Teo Geok Hui, Michelle
 Teoh Cheng Guan

Terrill, Justin John
 Thodos, Nicholas James
 Thoo, Li Ching
 Tiong Chiong Hiiung
 Tiong Ian Ping
 Tolley, Andrew Mark
 Tomaras, Effie
 Trembleau, Yves Andrew
 Triandos, Angelo
 Triantopoulos, George
 Tsagarakis, Angelo Arthur
 Tsirikos, Vasilios
 Tung Lian Tang
 Turnnidge, Ian David
 Vanderzalm, Jason Paul
 Velahoutakos, Pauline Panagiota
 Vitale, Peter Gregory
 Wai Mun Wan
 Walker, Douglas Keith
 Wall, Jason Henry
 Wallace, Katrina Margaret Frances
 Walmsley, Stephen John
 Warren, Alan John
 Watt, Jenny Wai Yee
 Wearne, David William
 Webber, Vaughan
 Webster, Nicole
 Wee, Ai Ning
 Wilkinson, Louise Anne
 Williams, Lisa Ann
 Williams, Nicola Lowri Beatty
 Wilson, Christopher John
 Wiseman, David William
 Wong Chee Chin
 Wong King Kong
 Wong Siu Bing, Eileen
 Wong Yuee Liang
 Wong, Anna Mei Leng
 Wong, Tat Seng
 Woo So Yin
 Wood, Timothy Mark
 Woodward, Diane
 Wu, Mitchell Patrick
 Wylie, Amanda Jane
 Yap Siew Leng
 Yap Siew Thee
 Yap, Kid Whai
 Yeo Chun Lian, Christopher
 Yeoh Eng Kong, Patrick
 Yeow, Siew Thin
 Yip Wei Mun
 Yong Teck Sun
 Yong, Sook Voon
 Yu Pui Man
 Yusoff, Norielim
 Zheng, Xiaomin
 Ziessink, Andrew John
 Zimmaro, Louise Marie
 Zippel, Lauren Ann
 Zuffi, Fiona Rochelle

Doctor of Philosophy (Education)

Boeha, Beno Bartholomew Tomon
 Clarke, David John
 Garrard, Janice Elizabeth
 Ho, Roze Rose
 Hollis, Maree Ann
 Howe, John Patrick
 Jayasena, Premachandra Hemapala Asoka Nalini
 Sandawathie
 Krane, Harry Herman
 McKenzie, Phillip Arthur
 McLennan, James Peter
 Muralidhar, Srinivasiah
 Rodan, Paul Kenneth
 Snyder, Hana Ariela
 Sullivan, Peter Arnold
 Sutrisno, Leo
 Wilkinson, Ian Richard
 Zammit, Susan August
 Zoani, Ammon Joseph Raphael

Master of Education

Anker, Robyn Lilian

Casinader, Niranjan Robert
 Fleiszig, Janina
 Harris, Ian Raymond
 Heffernan-Colman, Colleen Joan
 Hill, Norrene Joyce
 Jones, Mary Gwendoline
 Paduano, Rose Marie
 Prentice, Ernest Ronald

Master of Educational Policy and Administration

Xia Guangzhi

Master of Educational Studies

Addison, Peter
 Aitchison, Elizabeth Anne
 Aspinall, Malcolm Ross
 Bennett, Patrick James
 Bennett, Terrance George
 Biro, Judith Maria
 Blackwell, Stephen James
 Blethyn, Helen Winifred
 Brett, Brenda June
 Brewin, Michael Stephenson
 Browne, Leonie Maria
 Buchhorn, Anna Zofia
 Bullock, David Frederick
 Byrne, Carmel Mary
 Byrne, Maritza Ivonne
 Cabaniuk, Irene Dianne
 Chan Bing Sing
 Cheung, Christina Oi Ying
 Cheung, Jenny Yee-Kwan
 Clark, Janet Louise
 Collins, Lillith Isabelle
 Corrigan, Deborah Joy
 Crockford, Paul Jeffrey
 Dajkovich, Cynthia Karen
 Dharmarak, Pratin
 Douglas, Frances E
 Downie, Mary Rosanna
 Foster, Susan Kitty
 Gardner, Glenn Elizabeth
 Gindidis, Maria
 Green, Judith Sima
 Grimmer, Donald James
 Gu, Bingyan
 Gunter, Susan Maria
 Hancock, Kerrin Henry
 He, An-E
 Hensler, Enid Gillian
 Ho, Thomas Hoi-Cheong
 Hodgman, Michael John
 Ives, Glenice Faye
 Jinnette, Donald Leonard
 Jones, Brian Arthur
 Kanitsaki, Olga
 Kaplan, Susan June
 Kavadias, Leah
 Knight, Susan Jean
 Limongiello, John Paul
 Liu Ai Yun
 Liu Yan
 Loader, Robert Vernon
 Macdonald, Ian David Harry
 Matters, Pamela Norma
 McCredden, Lorna Valerie
 McDonald Glenda Margaret
 Melican, Jennifer Mary
 Mercer, Carol
 Metcalfe, Maree Margaret
 Millikan, Janice Maree
 Mills, Brian David
 Monaghan, Jennifer Anne
 Moshakis, Jack
 Muralidhar, Sundari
 Olive, Gillian Mary
 Parle, Peter Joseph
 Payne, Lynette Margaret
 Payne, Sue Ann
 Penfold, Ross William
 Pinczewski, Bella
 Ping, Huang Li
 Piterman, Leon
 Plail, Elizabeth

Port, Nola Rae
 Power, Shane David
 Rawat, Brenda
 Rea, Sandra Julie
 Rose-Meyer, Peter Eric
 Russell, Glen Peter
 Ryan, Colleen Mary
 Salih, Lemi
 Schmiedeknecht, Denise Yvonne
 Shepherd, Fiona Jane
 Short, Elizabeth Anne
 Simmonds, Victoria Elizabeth
 Smith, Gary James
 Stanley, David Ronald
 Suryana, Didikh
 Symmonds, Helen Cattanaach
 Tait, Susan Jane
 Tan, Margaret Mary
 Targett, Brenda Dawn
 Thomas-McLean, Sybil May
 Ustick, Barbara Anne
 Wai Kim Tse, Anastasia
 Warner, Judith Margaret
 Wheat, Kenneth Neil
 Wills, Ivan Raymond
 Yang, Renming

Bachelor of Education

Morgan, Gail Osborne

Bachelor of Educational Studies

Adem, Foster Festim
 Aly, Susan Elizabeth
 Bartlett, Barry James
 Barwood, Christine Helen
 Batchelor, Peter Neville
 Beilby, Dianne Maree
 Blanshard, Kenneth Norman
 Bourbon, Elwyn
 Boyd, Andrew D
 Campitelli, Rosalinde Christine
 Casey, Kevin Francis
 Chalmers, Noleen Mary
 Coleman, Julien Margaret
 Crosling, Diann Juliet
 Culton, Wilma Veronica
 Daly, John
 Damen, Anthony John
 Davis, Robert Alan
 de Bruyne, Anne-Maree
 Dempsey, Michael Joseph
 Duell, Virginia Louise
 Feeney, Vincent John
 Fenning, Mary Alana
 Fernandez, Celene
 Frazer, Neil Robert
 Fuller, Susan Emily
 Garby, Marianne
 Goh Siok-Kiang
 Goldstein, Deidre Deborah
 Grant, Genevieve
 Henderson, Robert William
 Hughes, Barbara Ann
 Keane, Sian Belinda
 Kennedy, Jennifer Anne
 Kennedy, John Gordon
 Lucas, Andrea Jane
 Mahar, Rhonda Marjorie
 Mahony, Gabrielle Marie
 Markwick, Hugh Edward
 Nash, Stephen James
 Noonan, Denis Edward
 O'Mahony, Brenda Joy
 Parr, Robyn Gaye
 Paterson, Jillian Margretta Anne
 Patterson, Judith Leslie
 Penduck, Patricia Dorothy
 Phillips, David
 Pooley, Stephen John
 Pullen, Judy Lorraine
 Richardson, Evelyn Janet
 Rooke, Miranda
 Schultz, Anne Elizabeth
 Seymour, John Charles
 Singer, Renata

Stein, Francoise Brigitte
Symeonides, Paula
Vogel, Carol Evelyn
Waters, Clive John
White, Susan Joyce
Wittenberg, Andrea Joy
Wright, Carol Ann
Yates, Shirley Patricia

Bachelor of Special Education

Barrett, Francesca Li-Leen
Bennett, Valma Louisa
Brice, Rosemary J
Bull, Janice Ann
Buso, Joyce Irene Claudia
Campbell, Ellinor Mary
Clarke, Dell Rose
Critchley, Monika Maria
Fennell, Marguerite Royden
Fisher, Christine Anne
Haberfield, Debra Anne
Hamilton, Jennifer Ann
Hawkes, Elaine Marion
Hawkins, Christine Anne
Neal, Ronald James
Noyes, Philip Stephen
Proudley, Jan Cheryl
Reed, Cheryl Eleanor
Taylor, Terrill Isabel
Thomson, Carolann
Tinetti, Carmel Joan
Webster, Alistair Tom
Wee, Julie Dawn

Doctor of Philosophy (Engineering)

Alexander, Brian Frederick
Atapattu, Don Dudley
Burgin, John Leonard
Cheang Hong Ning, Philip
Chen Keng Cheong, Bernard
Cheung Chi Chong
Chun Hoong Koh, Stephen
Chynoweth, Kevin Richard
Fok Sai Cheong
Foo Soon Kwee
Giam Siew Kin
Hart, Peter Michael
Jenkins, Graham Andrew
Kafui, David Kwesi
Kodikara, Jayantha Kumarasiri
Kwok Kian Hoong
Ling Jui-Hsien
Mills, Russell Craig
Nan Li
Ng Kok Kuang
Sau-Wing Lam, Stephen
Sheridan, John
Ting Yen-Peng
Welti, Neal Arthur

Master of Engineering Science

Arslan, Sinasi
Aumann, Gregory Noel
Barr, Graeme John
Ch'ng Yoon Seng
Chen Bei De
Chin Yun Fong
Chiong Siew Chuong
Cleeland, John Edward
Delany, Walter Alexander
Fairlie, Russell Brian
Ginger, John David
Gu, Qiulin
Haydon, Shane Robert
Horan, Edmund James
Kelly, David Leigh
Koay, Raymond Ah Fatt
Kowalczyk, Ewa Anna
Lian Kee Siong
Merlo, William Gilbert
Mottram, Clive Kenneth

Ong Chong Yuen
Peterson, Robert Charles
Phung, Nyoke Ching, Geraldine
Poon Sai Leong
Rhodes, Bruce Graham
Samuel, Scott Monteith
Thompson, John Christopher
Wassenaar, Patricia
Wong Sook Fun
Yee Yew Weng

Bachelor of Engineering with Honours

Aguilar, Luis Alberto
Armstrong, Andrew Ian
Autar, Rajendra Kumar
Balatsas, John
Benham, Daryl John
Bennetts, Donna Christine
Berberich, Carsten
Bertolini, Adrian Francis
Bertoncello, Mark Andrew
Biggs, Phillip Keith
Blair, Mark Andrew
Boey Chern Yue
Brosi, Andre Paul
Brown, Andrew Harris
Brown, Brendan Thomas
Brown, John Andrew
Bruehwiler, Dominic Robert
Cameron, Nicholas Donald
Cavallaro, Andrea Luciano
Chang Fatt Wee
Chang Yi Lee, Ignatius
Chiam Tow Fie
Chieng Lee Hong
Chin Young Pong
Chiu Chiaw Chien
Chong Hock Choong
Chung Chang, Gary
Clivas, Glenn William
Clothier, Noel Christopher
Cockshott, Antony John
Covelli, Tullio
De Sousa, Lyle Orville
De Wit, Mark Gregory
Dellar, Cameron John
Dickson, Adam Matthew
Dioguardi, Leslie Joseph
Duncan, James Hamilton
Farrugia-Roberts, Jason John
Fong Choong Ewe
Foong Hock Wai, Edwin
Glenk, Andrew Roger
Goh Tok Kwong
Green, Richard Ronald
Greenwood-Smith, Andrew Robin
Growse, Anthony Richard
Handreck, Carl Robert
Handreck, Karen Jane
Harbutt, Philip Lloyd
Hawkins, Wendy Jo
Hellier, Kevin Phillip
Henson, Scott Andrew
Hetherington, Andrew Edward
Hodge, Robert Mark
Hondrakis, Billy
Hong, Myle Melissa
Huang Wen Yiau
Jennings, Warren John
Kantzos, Peter
Keng Teng Tan
Kershaw, David John
Kheng Heng Mok
Khoo Winn Khean, Kenneth
Kirtan, Paul
Lai Heng Mun
Lamson, Dean Ronald
Langer, Robert Charles
Langthaler, David
Latsis, Theodore
Lau Dee Dee
Law, Herman Victor
Lee Beng Hooi
Lee Leow, Jean
Lewis, David Elwyn
Liew Huey Cherrng

Lim Chee Jin
Liu, Darren Stephen
Liu, Polian
Lok, Bing Fai Sylva
Loke Chooi Choo
Lonsdale, John Campbell
Love, Anthony George
Lutton, Peter John
McOmish, Richard Donald
Melbourne, Angus John
Meydan, Miron
Montenegro, Daniel Julio
Morton, Adam John
Murdica, Vince
Murphy, Michael Brian
Neiger, David Samuel
Ng See Liong
Ng Weng Seng, Richard
O'Malley, Bernard James
Ooi Yong Wee
Palmer, Thomas Ronald
Pane, Luigi
Panfalone, Joe
Petschack, Stephen Vincent
Phoon Wai Leong
Phuong, Le Nha
Randle, Grant Marcus
Read, Samantha May
Rinderer, Marc Andrew
Samuel, Wayne David
Schmidt, Oliver
Shaw, Michael
Shaw, William Andrew
Shmerling, Jonathan Henry
Stevic, Darinka
Sticca, Rosa
Story, Scott Robert
Tan Kwan Quay, Michael Shaun
Tan Thiew Keng
Tang Kim Yee
Tang, Eric
Tay Hoe Chin
To, Albert Mo Ching
Watson, Simon John
Weston, John Francis
Whitebrook, Richard Bruce
Willis, Spencer Robert
Wong Kim Fei
Wong, John Kok Hee
Wright, Stephen James
Yap Mow-Ying, Phillip

Bachelor of Engineering

America, Paul
Anglin, Darron John
Archer, Patrick John
Begic, David
Bellamy, Sarah Margaret
Binh Van Bui
Block, Simon Alexander
Bloomfield, Stuart Hilton
Chan Hon Yu
Chong Mun Fai
Dinh Ngoc Cuong
Fraanje, Arthur James
Giannone, Antonio Etalo
He Lip Bu
Healy, Peter Charles
Jurgensen, Dietmar Carl
Just, Stephen Andrew
King, Paul Barry
Kiss, Laszlo
Konstantinou, Serafim
Krzyniak, Richard Anthony
Kueh Boon Heng, Vincent
Lai Tung Kong, Terence
Lappas, Petros
Lau Hui Ling, Nancy
Lau Mei-Lun, Michelle
Law Hui Gin, Joan
Lee Cheen Hoong
Lee, Philip Hooi Leap
Little, Graeme Richard
Malios, Matthew George
Man Hon Ki
Mansell, Troy Robert
Marinelli, Dominic Orlando

Matthews, Catherine Louise
 McDonald, Darren John
 McKenzie, Murray Scott
 Mitchell, James Christian
 Mulholland, Karen Leanne
 Ng, Colette Maria
 Nguyen, Vanbich
 Northey, Paul Gerard
 Oh Teik Siang
 Ohlson, Trevor Jon
 Ooi Son Hock
 Othman, Khairudin
 Pesimena, Piero
 Phan, Hung Quoc
 Proh, Daniel Joseph
 Rosa, Steven John
 Rowland, Matthew David Campbell
 Rowlands, Trevor John
 Saliba, Joseph George
 Salt, Nicholas Mark
 Schnerring, Dirk William
 Sim Siong Hee
 Soon Aik Yong
 Tan Hock Yee
 Tse Bo Yue
 Van Beurden, Marc Alois Charles Rene

Doctor of Laws

Fox, Richard George

Doctor of Philosophy (Law)

Hughes, Gordon Langford
 McCormack, Timothy Lloyd Hearnden

Master of Laws

Armstrong, Kevin Thomas
 Davison, Mark James
 Gomez, Mario Angelo
 Kennedy, Maree Evelyn
 McDonagh, Maeve Brid
 McGowan, Glenn Charles
 Power, Edward John
 Rose, Gregory Lawrence
 Shapiee, Rohimi Bin
 Simpson, Brian Hendry
 Smith, Bernard Damien
 Wang Yuankuo

Bachelor of Jurisprudence

Ali, Onur
 Barratt, Lynnette Anne
 Brand, Anthony John Solomon
 Hennessy, Anne Mary Veronica
 Kline-Marantelli, Leonie Irene
 McMillan, Linda May
 Musumeci, Catherine Josephine
 Parker, Stephen Avison
 Raghunath, Gityarpuram Nadathur
 Sharkey, Michael Andrew
 Sonnett, Brett Lynton

Bachelor of Laws with Honours

Bassat, Andrew Reuven
 Biondo, Santo
 Clough, Jonathan Allan
 Cooper, James MacGregor
 Douglas, Jennifer Anne
 Fraser, Mitzi Lisa
 Freeland, Christopher John
 Gershov, David
 Orlowski, Stefan
 Palmer, Andrew James
 Sonnet, Brett Lynton
 Stone, Jacqueline Jane
 Tiller, Christopher Linley
 Walsh-Buckley, Warwick James
 Weller, Torsten Alf

Bachelor of Laws

Adam, Susan
 Amidzic, Vesna
 Anagnostou, Chryssa
 Arellano, Rodrigo Alejandro
 Arvanitis, Katerina
 Barker, John Edward Henry
 Barnett, Shaynee Leah
 Barratt, Lynnette Anne
 Baxter, Darren Jay
 Bayliss, Caroline Isobel
 Begg, Alison Margaret
 Beharis, Emmanouel Noel
 Blair, Kellie Anne
 Block, Peter Robert
 Bloom, Kathryn Anne
 Bortoluzzi, Dominic Robert
 Boymal, Nicholas Paul
 Brand, Anthony John Solomon
 Brand, Wendy
 Brasier, Leonie Ruth
 Broadbent, Jeremy Scott
 Brown, Dale Patrick
 Brown, Peter Anthony
 Brown, Philip Hayes
 Brunlow, Dianne Elizabeth
 Brygel, Ashley
 Bunyan, Elisabeth Joy
 Burke, Ben David Francis
 Burke, James Michael
 Cabaniuk, Patricia Pauline
 Cadogan, Anne Marie
 Cain, Patrick Brendan
 Carroll, Shane Patrick
 Casamento, Rosalinda
 Casey, Martin John
 Chan, David Joseph
 Chang, Jason Chien Min
 Charak, Pearl Hanna
 Charman, Gregory Bruce
 Chazan, Richard David
 Cheah Chui Mei, Valerie
 Chen Siew Foon
 Choo, Steven
 Cook, Dominic Joseph
 Counsell, Debra Joy
 Crowe, Elizabeth Maria
 Dahlsen, Geoffrey Christian
 Daquino, Gaetano Carmelo
 Davies, Mariano Elizabeth
 Day, Richard William
 De Cicco, Dunia Mary
 Denholm, Andrea Joy
 Dessiniotis, Chris
 Di Camillo, Nunziatina Katherine
 Douglas, Heather Anne
 Douglass, Kim Jane
 Dowling, Craig William
 Drummond, Bronwyn Lisa
 Duke, Adam Gordon
 Edelstein, Jonathan Samuel
 Emery, Michael
 Fahey, Lauren Samantha
 Farrelly, Mark Joseph
 Finch, Ian Gregory
 Fink, Naomi
 Finn, Jenny
 Fischbacher, Herbert Roger
 Fotheringham, Helen Annette
 Gandur, Judy
 Gault, Samantha
 Gelbert, Lorna Grace
 George, Cameron McDonald
 Germov, Rosaline Maria
 Giacco, Charles
 Giannopoulos, Tina
 Giatrakos, Maria
 Gillard, David William
 Gillis, Julian Frank
 Gladwell, Terri Suzanne
 Goh Siew Kin
 Grant, Andrew James
 Grewal, Yasmin Kaur
 Grice, Allison Doreen
 Griffiths, Debra Lee
 Grimberg, Claudia
 Groppi, Cameron John
 Grotjan, Peter Alexander

Gulbin, James Christian
 Haas, Sabine
 Harvey, Cameron Roy
 Hastings, Ian Charles
 Hastings, Josephine Mary
 Hatch, Mary Louise
 Hayes, Fiona Anne
 Haysey, Susanne Elisabeth
 Henry, Rebecca Anne
 Hepburn, Samantha Jane
 Hii Kwong Kiing
 Hill, Adrian Seamus
 Ho Sook Yee
 Horan, Jacqueline Mary
 Howe, John Bellett
 Interligi, Elisa Anne
 Isolani, Gregory Aurelio
 James, Robert Keith
 Jones, Alison Angela
 Karalis, George
 Karliner, Doron Michael
 Katsieris, Antonia
 Kelliher, Daniel Peter
 Khoo, Phaik Lynn
 Kirsner, Jane Louise
 Kline-Marantelli, Leonie Irene
 Knights, Kim Joy
 Kontaxopoulos, Konstantine
 Krakauer, Paul
 Lagos, Eudokia Effy
 Lau May Ling
 Lay, Dominic Peter
 Lee De Beng
 Lee Eng Chew, Edward
 Lee Kok Wah
 Leech, Margaret Mary
 Legro, Hayden Phillip
 Leibler, Gary Zev
 Leong, Primrose Tsui Yin
 Lester, Eleanor Kay
 Lercher, Sarah Jane
 Lewin-Poole, Sonia Mavis
 Lianos, Tola
 Liefman, Peter John
 Lionakis, Nick
 Lor, Caroline Mei-Lin
 Lucas, Nicholas John
 Lusby, Maria Louise
 Lyons, Nicholas John
 Macindoe, Sally Granfield
 Madder, Emily Bessie
 Malone, Sarah Katherine
 Manly, Declan Patrick
 Manly, Declan Patrick
 Maramis, Sevasti
 Mason, Robert McEwen
 McBurnie, Denise Lorraine
 McCann, Stephen Barry
 McCarthy, Paul Daniel
 McConville, Ian Michael
 McGowan, Miriam Christine
 McKenzie, Bruce Robert
 McKeown, Gerard Conleith Patrick
 Menon, Mini
 Mentiplay, Paul Raymond
 Mercuri, Patrizia
 Middleton, John Gregory
 Minisini, Enio Michael
 Moss, James Anthony
 Murphy, Paula Majella
 Muscat, Josephine Mary
 Muschialli, Ronald Anthony
 Nagarajah, Santhosh
 Nettelbeck, Jennifer Maria
 Newcombe, Lisa Maree
 Ng, Craig Eesyn
 Niall, Richard Michael
 Normand, Andrew Jeffrey
 Northam, Charles Thomas
 Olney, Darren Stuart
 Ong Gaik Lan, Lily
 Oxley, Cameron John
 Papanicolaou, Sophia
 Pascoe, Ian David
 Plotkin, Belinda
 Poole, Trevor Ian
 Poopalasingam, Clarence Kulasingam
 Porter, Felicity Ann
 Prappas, Bill

Priddle, David Neill
 Rabinowicz, Solly Charles
 Radich, Mary Genevieve
 Raghunath, Giyarpuram Nadathur
 Reale, Mariolina Biagia
 Reid, Scott Anthony
 Rekas, Dina
 Roberts, Amanda Lucy
 Robertson, Neil Bruce
 Rooke, Paul Norman
 Roseman, David Gregory
 Rubinstein, Peter Irwin
 Salamon, Steven
 Salce, Antonio
 Sandrasegaram, Kulaselvi
 Savoca, Leondina
 Saw Hoay Hoon
 Schultz, Jennifer Ann
 Searby, Patrick Richard Henry
 Seymour, Mark Clement
 Sgourakis, Chris
 Shanahan, Elizabeth Anne
 Sharkey, Michael Andrew
 Siaw Yean-Hwa, Timothy
 Siew Chun Tut
 Sinnetamby, Revantha
 Sojka, Steven Richard
 Stracke, Marjanne Wilhelmina
 Sudholz, Andrew John
 Sumner, Catherine Sien
 Sweeney, Matthew Dominic
 Talbot, Stephen MacKenzie
 Taylor, David Homan
 Tee Han Cheong
 Themistocleous, Maria
 Thong Lee Peng
 Tkalec, Damian
 Trevisiol, Mirella
 Tweddle, Richard Cameron
 Unreich, Rachelle Simonne
 Van Ballekom, Mary-Ann
 Verkade, Jacquelyn Hope Diane
 Wang Yan Li
 Waters, Mark
 Wearne, Bernice Mary
 Weeramantry, Joseph Romesh Gregory
 Weiss, Suzanne Lara
 Wong Cheah Haw, Eric
 Wong Yue Cheong, Francis
 Wui Wui Vivee Low
 Yeo Chua Poh, Lawrence
 Yeoh Mooi Sean, Angeline
 Young, James Peter
 Yu Pui Man

Doctor of Medicine

McNeur, John Clarke
 Rowe, Ian Leonard
 Salzberg, Michael Raphael
 Xiao-Zhong Chen

Doctor of Philosophy (Medicine)

Andrianakis, Peter
 Bashiruddin, John Bijoy
 Bertolini, John
 Brothie, Peter Rodney
 Canny, Benedict James
 Chin Pui Fong
 Clements, Judith Ann
 Davies, Sean Paul
 Fry, Richard Charles
 Godfrey, Dale Ian
 Gurusinghe, Asitha Dushanth
 Hodder, Anthony Neil
 Hodgson, Wayne Clarence
 Ioannides-Demos, Lisa Lee
 Izon, David John
 Jansakul, Chaweewan
 Jost, Barbara Helen
 Kerr, Peter Gerard
 Kerry, Julie Ann
 Law Hong Ping
 Lim Chen Fee
 Low, Amy Mariann
 Munro, Judith Margaret

Newnham, Harvey Harrison
 Payne, Michael John
 Rose'Meyer, Roselyn Barbara
 Rundle, Susan Elizabeth
 Sudhir, Krishnankutty
 Wilson, Trevor John

Master of Biotechnology

Blane, Annette Elizabeth
 Eng Kok Ong
 Khosa, Ester
 Kumar, Raja Kumar
 Woods, William John

Master of Psychological Medicine

Alcorn, Ronald James
 Kemp, Melinda

Master of Public Health

Morley, Peter Kingsley

Bachelor of Medical Science with Honours

Baker, Timothy Rex
 Bertolucci, Michelle Marie Louise
 Hawkins, Nigel John
 Maguire, Graeme Paul
 McCarthy, Elizabeth Anne
 Stephens, Katrina Jane
 Swee-Mei Kok, Joyce
 Tomlinson, James William

Bachelor of Medicine and Bachelor of Surgery with Honours

Ajani, Andrew Edward
 Allan, Carolyn Anne
 Bell, Andrew John
 Blackman, Paul Graham
 Bonollo, Marco
 Braham, Simon Anthony Richard
 Butler, Samantha Ann
 Canaider, Kirsty Anne
 Cassano, Anne-Marie Terese
 Chin Suliong
 Clark, David John
 Clifford, Celia Anne Lorinda
 Cooke, Jennifer Catherine
 deSouza, Michael William
 Dillon, Louise Claire
 Ebrahim, Ashraf Ishak
 Ellis, Samantha Jane
 Ewart, Fiona Jane
 Fowler, Susan Hilary
 Gee, Walter Wah Yiu
 Hanegbi, Uri Benjamin
 Hargreaves, Samantha Kate
 Hawkins, Nigel John
 Healy, John Patrick
 Hesse, Michelle Therese
 Jenkin, Grant Adam
 Jones, Catherine Mary
 Leder, Karin Sharona
 Leivenzon, Leonie
 Leong, Samuel Wen-Fei
 Lindholm, David Earl
 Linton, Karen Simone
 Maguire, Graeme Paul
 Mansour, Hala
 Markou, Petros
 McCarthy, Elizabeth Anne
 McDonald, Anthony Hugh Neil
 McKelvie, Malcolm James
 McMahon, John Henry Addison
 O'Connor, Rona
 Opdam, Helen Ingrid
 Papadopoulos, Maria

Patten, Karen Elizabeth
 Paull, Amalie Elizabeth
 Payne, Janine Melanie
 Pellegrino, Vincent Alfred
 Perlin, Nadine Elise
 Rasaratnam, Brindhessa
 Raymond, Frank George Peter
 Seevanayagam, Sivendran
 Sim Kui-Hian
 Smith, Craig Robert
 Smith, Thomas Edward
 Steele, Andrew Kenneth
 Stephens, Katrina Jane
 To, Elean
 Trivett, Adrian Justin
 Uhlenbruch, Barbara Elisabeth
 Wagstaff, Sherryl Ann
 Welsh, Belinda Maymie
 White, Michelle Ann
 Wilcox, Gisela
 Wise, Bernadette Therese
 Wood, Robert John
 Wunderlich, Adrian Roger
 Zwar, Richard Bernard

Bachelor of Medicine and Bachelor of Surgery

Ambrose, Mary Anne Devere
 Bottcher, Clare Isabel
 Chan, Andrew Yan-Tak
 Croatto, John Baptist
 Csongvay, Istvan
 Dalgliesh, Joanne Mary
 Donato, Rosario Roberto
 Dynes, Kathleen Margaret
 Farmer, David John
 Ferfolja, Silvia
 Galanopoulos, Panagiota
 Geluk, Michael John
 Guthridge, Jacinta Mariette
 Harrison, Carolyn Michelle
 Hawkins, Lucy Caroline Elizabeth
 Hayes, Kim Alana
 Hayman, Brendan
 Hemmings, Charry Ann Luce
 Hien Huynh
 Hyland, Brendan John
 Irons, David Jeffrey
 Jane, Alice
 Jansen, Kym
 Johns, Louise Ann
 Judkins, Simon Antony
 Kar-Yun Lee, Peter
 Katsenos, Spiridoula
 Kiley, Michael Anthony
 Knieriemmen, Anton Egon
 Lackner, Peter Johann
 Lazaridis, Alexandra
 Lim Joon, Michael Thomas
 Lim, Peter
 Loke, Kit Peng
 Long, David Andrew
 Maccora, David Michael
 McIntyre, Tiffane Jane
 Mirakian, Alex Sarmen
 Mooney, William Wall Warner
 Nisbet, Deborah Louise
 Phiri, Wilson Mangaliso
 Pryor, Jill Mary
 Rajapaksa, Anjali
 Reimers, Tessa
 Samers, Josephine Maria
 Schachna, Lionel
 Scopel, John
 Troupakis, Panagiota
 Tsigaras, Harry
 Veary, Karen Rose
 Vu Kien Fong, Charles Sebastian
 Wheeler, Gregory Charles
 Yaman, Hakan
 Yean Mean Haw
 Zayontz, Shay Joshua
 Zyn, Yvonne Marlen

Master of Librarianship

Komariah, Neneng

Doctor of Philosophy (Science)

Becker, Anne
Blanchonette, Ian
Chang Yun-Feng
Chong Woan Chin, Jenny
Clout, John Michael Frederick
Cuno, Andrew
Davis, Christopher Wakelin
Day, Joanna Jill
Evans, Jenni-Louise
Feng Yi
Ferreira, Jose Manuel Salgueiro Gomes
Forsyth, Maria
Handreck, Gregory Paul
King, David George
Korolik, Victoria
Lim Soon Chuan
Loh Sue Mei
Martin, Vance Lindsay
Mason, Jennifer Ruth Clemenger McEwan
Matthews, Barry Ross
Mitchell, Peter John
Nassios, George
Ney Siew Cheng
Padmadisastra, Septiadi
Pownceby, Mark Ian
Quilligan, John Damian
Robinson, Peter Douglas
Rose, Mark Lionel
Sajeev, Abdulkadir Sayed Muhammed
Singleton, David Barry
Skene, Colin Edward
Smallridge, Andrew John
St Clair, Rosalind Mary
Strom, Alan David Greve
Sukhyar, Radan
Thomson, Scott
Valenta, Richard Karel
Vukadinovic, Danilo

Master of Science

Burke, Sandra Lynette
Cathro, Edward David
D'Costa, Donna Marie
Gude, Neil Murray
Gutsa, Ernest Hatibatyi
Heintze, Nevin Charles
Kepert, Jeffrey David
Lahy, Neil Kevin
Marinopoulos, Nick
Ridley, Roger Nicholas
Roberts, Bryan Evan
Xiao Yin Liang
Young, William

Bachelor of Science with Honours

Adams, Glen Darren
Ahmar, Wally
Armellin, Lara
Bastounas, Sam
Bateson, Katherine Elizabeth
Bauer, Uta Pamela
Baxter, Rohan Allan
Beardsmore, Graeme Ross
Bednjacic, Alen
Belli, Sabina Ilaria
Bennett, Linda Ellen
Beovich, Elizabeth Kathleen
Blick, Tony James
Blundell, Craig Anthony
Brandt, Evelyn Rosemary
Brennan, Sue Ellen
Brown, Katherine Jane
Brumley, Carolyn Marie
Burman, Catherine Elizabeth
Buskes, Theodorus Johannes
Cannon, Frances Irene

Carmody, Gerard John
Casey, Philip Stephen
Castle, Linda Jane
Cervini, Raoul
Chan Sung Tong, John
Chang, May Yin
Chua Soke Wan
Clayton, Helen Elizabeth
Cohen, Jennifer Anne
Collins, Julian Peter
Cowling, Jane Lisette
Csar, Xavier Francis
Cunningham, Saul Alan
Cupic, Ivan
Degoldi, Brett Raymond
Delaney, Peter Maxwell
Dennis, Clare Jennifer
Derlet, Peter Michael
Dietze, Paul Mark
Dimitriadis, Maria
Dimopoulos, Angela
Dinatale, Angela Maria
Diong Lang Shi
Dionysopoulos, Timothy
Djajamihardja, Taufik Hidayat
Ducatel, Melvena Sylvia
Duncan, Andrew Robert
Edmondson, Julie-Jane
Edwards, Paul Dominic
Ellis, Meredith Jane
Evans, Susan Gaye
Fairlie, Walter Douglas
Fam, Marie-Anne May
Ferdinands, Keith Brian
Fraser, Fiona Jayne
Fulton, Angela Elizabeth
Gardiner, Elizabeth Ellen
Garzarella, Elisa Anne
Georgiou, Stella
Gourlay, Belinda Jane
Graf, Belinda Helena
Graf, Paul Johannes
Grant, Andrew James
Green, Brian Timothy
Griffiths, Morwenna
Hancy, Susan Maree
Harker, Stephen John
Hart, Adam Howie
Hatherley, Lynette Denise
Heazle, Kerry Denise
Herbert, Andrew John
Hey, Jeffrey Michael
Hill, Michelle Arlene
Ho King Ngan, Anita
Hogeboom, Karen
Howell, Rosemary Anne
Humble, Robin John
Hutton, David James
Jarvis, Helen Maree
Jarvis, Michael Brendon
Jensen, Wayne Anthony
Johnston, Michael Brian
Josefsson, Torgny Wilhelmin Emanuel
Joshua, Fiona Elizabeth
Kannar, David
Karopoulos, Christopher
Kaulenas, Andrius
Kebede, Mekonnen
Keddie, Gayle Margaret
Kenyon, Christine Edith
Khong Tee Fern
Khor Keat San
Kingham, Stuart David
Kiriazis, Helen
Koay, Anne-Marie
Koh Vui Kheong, Richard Thomas
Kueh Lip Hang
Lacey, Kirsten Jennifer
Lee De Beng
Lee Siak Yuen
Lellyett, Stephen Charles
Leung Pak Kin, Allen
Lewis, Andrew McDonald
Lightwood, Liron
Lim, Noel
Lin Yueh Nuo
Lipton, Alan Joseph
Lipton, Mark Ian
Losinno, Carmela Maria

Ma Kinh Quang
Mammen, Anna George
Mansfield, Danielle Clare
Martinelli, Teresa Marion
Mathiopoulos, Diana
McAteer, Deborah
McCarthy, Thomas David
McCaughy, Stephen Neil
McDonald, Debra Lynne
McDonald, Margaret Lucy
McInerney, Jacqueline Judith
McLachlan, Grant Andrew
Meyer, Tamara Freda
Michell, Belinda Joyce
Mitchell, Craig Anthony
Mitchell, Paula Jane
Moffat, Mark Raymond
Momcilovic, Vera
Morando, Steven
Morison, Russel Peter
Morley, Grant Peter
Munro, David Dean
Murray, James Rhys
Neale, Suzanne Louise
Newstead, Stuart Vaughan
Newton, Antony Alan
Noviello, Suzanne
Olsson, Christina Lee
Ong, Rae Mun
Paidoussis, Katina
Panaya, Peter
Papakonstantinou, Theodoros
Parker, Glendon John
Parker, Julia
Paulsen, Ian Thomas
Peake, Anthony James
Peters, Caroline Luci
Pham, Thanh Hung
Pierce, Tracie Lorraine
Pittock, James
Pollock, David Charles
Potiris, Vivian Vicki
Powell, Maree Sharne
Rayner, Gerard Michael
Reid, Michael Alister
Reilly, Ann Theresa
Reynoldson, Nicola Anne
Riffkin, Michael Charles
Roper, Elise Janine
Ross, Grant Stuart
Rowland, Brendon John
Rudd, Carl Damon
Samah, Sharil Abu
Schembri, Mark Andrew
Semertjis, Assimina
Seng-Siong Teo, Michael
Shadforth, Lisa Michelle
Shaw, Hugh Ian
Shen, Belinda Anastasia
Sherrard, Bridget Ann
Short, Michael Franklyn
Skordilis, Constantinos
Slattery, David Wesley
Soh, Kam Hung
Stone, Michael Colin
Tang Siong Tiing
Tassios, Zoe
Teasdale, Rohan David
Thomas, Ross Stuart
Toh, Eric
Truman, Dirk Anthony
Tutton, Carmel Therese
Underdown, Kathleen Ruth
Vassiliou, Peter
Vo, Thanh Liem
Volpe, Carlo
Watson, Michael John
Williams, Naomi Samantha
Wilson, Michael John
Wong Miu Kuen, Clara
Wong, Geoff Peter
Woo, Sophia
Yen, Janet Louise

Bachelor of Science

Abramoff, Alexander
Adeney, Jacqueline Yvonne

Alexander, Justin Marc
 Alper, Sarah Jane
 Anderson, Brendon John
 Andrianopoulos, Helen
 Andrinopoulos, Steve
 Angliss, Peter David
 Antonakis, George
 Argyriou, Stella
 Arms, Tam Alexander
 Asmanis, Steve
 Atkinson, Tracey Ann
 Bacon, Daniel Sinclair
 Bader, Ivan
 Bagaric, Drago
 Baltutis, Linus Paul
 Bamford, Simon Gregory
 Barassi, Nancy Joan
 Barnardo, Domenico Angelo
 Barnes, Stephen Keith
 Bartholomeusz, Stephen Arjuna
 Batistatos, Odisea
 Bauer, Christina Maria
 Baulch, Elizabeth Lucy
 Bawden, Amanda
 Bayeh, Lolita Catherine
 Beachcroft, Jason Andrew
 Bearman, Margaret Lynn
 Beavis, Michelle Jane
 Beh, Paik Swan
 Birchall, Sharon Ruth
 Blackmore, Paul Stephen
 Bleaser, Maria Monique
 Bonwick, Jamie Phillip
 Boodoo, Alain Pierre Jacques
 Bostock, James Stuart
 Boulton, Alan Michael
 Brennan, Joseph Samuel
 Breuer, Kate
 Brewster, Stuart Ashley
 Brownbill, Robert Julian
 Browne, Kylie Ann
 Buchan, Melanie Jane
 Buckland, Andrew John
 Bumpstead, Geoffrey Robert
 Burazin, Tanya
 Cameron, Melissa Jane
 Campbell, Jonathan Andrew
 Carroll, Jennene Maria
 Carson, Thomas Anthony
 Carter, Andrew Maxwell
 Caruana, Anthony Robert
 Cavolo, Eddie
 Ceniza, Josephine Theresa
 Chan En-Lai
 Chard, Jamie Douglas
 Chatfield, Catherine Anne
 Cheong, Kevin Steven
 Cheung Ching Han
 Chiam Soon Beng
 Chien, Swena Sze Wai
 Chiu Chui Chu, Anna
 Chrimes, Nicholas Charles
 Ciric, Loretta
 Clark, Ron Drennan
 Close, Dorothy Frances
 Coates, Justin MacDonald
 Cole, Christopher Robert
 Constantinou, Dora
 Coronado, Edgardo
 Cox, Kerry-Ann
 Crotty, Gregory Charles
 Currie, Kathleen Joy
 D'Rozario, Desiree Anne
 Danos, Maria
 Davis, Katherine Amanda
 De Santis, Catherine Joan
 Deligiaouris, Petros
 deSouza, Kevin Peter
 Devereux, Ross William
 Dexter, Ian
 Dikkenberg, Anita Christine
 Diong Tak Chong
 Doak, Simon Anthony
 Dolecki, Joanna Lidia
 Donovan, Edward Arthur
 Dorward, Fiona Mary Clyne
 Dowie, Paul Vincent
 Downes, Samantha Jennifer
 Drago, Fabio

Dunhill, Andrew York
 Duong, Kieu Cong Van
 Earl, Gillian Elizabeth
 Erdstein, Davis Asher
 Evans, Jonathan Keith
 Evans, Marcus
 Farmakioti, Lyn
 Farrell, Geraldine Therese
 Faul, David John
 Feldman, Nathan Jacob
 Ferguson, Joanne Margaret
 Ficinus, Anthony James
 Firminger, Lorien Elizabeth
 Fowler, Deborah Lynette
 Frank, Adrian Hans
 Frankland, Kimberley Danielle
 Fullwood, Tiffany Emma
 Gannon, Peter Frederick
 Garwood, Anne-Marie
 Gent, Carey William
 Georgakopoulos, Peter
 Giannakopoulos, Demetra
 Glover, Rodney David
 Goodwin, Fraser John
 Gora, John
 Gordon, Mary-Ann Lynne
 Gouw, Tji Jung
 Gowty, Christopher George
 Greentree, Sean Joseph
 Greenwood, Deborah Joy
 Grice, Donna Jo
 Grosman, Cornelia Michael
 Grundy, Joseph
 Guinness, Jonathan Edward
 Gustaini, Marc Alfred
 Haddad, Dianne
 Hannan, Kathryn Frances
 Hannath, Brett Damon
 Harper, Bridget Mary
 Hatzilazaridis, Nikolaos
 Hawkey, Cathy Anne
 Hawkins, Kate Isabella
 Hay, Jacinta Marie
 Hayse, Nerida Kathleen
 Henderson, Ian Scott
 Hennessy, Jack
 Hepenstall, Wayne Seymour
 Heyes, Michael Tasman Hudson
 Hii King Hie
 Hinchey, Sara Louise
 Ho, Deborah Won-May
 Hoff, Per Arne
 Hogan, James Anthony
 Holdaway, Edward Byron
 Holliday, David John
 Holness, Sharyn Joyce
 Holt, Kenneth Paul
 Houston, James Cameron
 Howard, Peter Thomas
 Hoyle, Michael Liam
 Hronopoulos, Apostolos Paul
 Hulsbergen, Carolyn Joy
 James, Adrian Wesley
 James, Philip Anthony
 Janson, Adrian Antonnie
 Johnson, Inge Maria Gunawan
 Johnson, Meredith
 Johnston, Michael James
 Judd, Daniel Jeremy
 Julia, Saimun
 Kabo, Mimi Elizabeth
 Kalliontzis, Panagiota Betty
 Kalocai, Katarina
 Karatselios, Chris
 Kassim, Suraiani
 Katic, David
 Katsanis, Sia
 Katsikas, Aglaia
 Kavarnos, Gregory
 Kelley, Alan Trevor
 Kelly, Georgina Leanda
 Kelly, Maria Anthermett
 Kennedy, Shayne Michael
 Ketsakidis, Christopher
 Kew, Elizabeth Grace
 Khoury, Christine
 Kleinig, Andrew
 Koch, Jennifer Frances
 Koha, Livia Alvianti

Korakis, Terry
 Kourambas, Irene
 Krepp, Anthony Neville
 Kruithof, Martin Hendrick
 Kuiper, Michael John
 Kuuse, Mark John
 Kyriakopoulos, Georgina
 Lai Yim Fun
 Lambros, Bill
 Land, Sarah Louise
 Lara, Alejandra
 Last, Karena
 Le Poidevin, Barbara Anne
 Le, Phu Dung
 Lee Ai Ling
 Lee Chung Fatt
 Lee Eng Haow
 Lee Eng Liew
 Lee, Nicholas John
 Lee, Terence Richard
 Lees, Glenn Andrew
 Leibler, Anthony Roman
 Leishman, Ross Quentin
 Letzing, Michelle Linda
 Liaw Yong Shyang
 Lien, Hoa Kim
 Liepa, Jeanette Tanya
 Liew, Nhi Manh
 Lightbody, Colin Alexander
 Lim Eng Leong, Richard
 Lim Oun Van
 Ling Juh Chin, Aini
 Liow Che Tek
 Livermore, Donna Maree
 Loh, Hwai-Hiang
 Loh, Roger
 Loh, Yin Yin
 Lolis, Tony Victor
 Long, Gregory William
 Loucas, Katherine
 Louzis, Maria Areti
 Lucas, Justin Brian
 Lukins, Karen Nicole
 Ma Hok Hon, Leonard
 Mach, Terry
 Mah Bean Yuen, Julia
 Malone, John Bryan
 Mankin, Helen Rita
 Margetts, Stephen Barrie
 Marshall, Glenn Stuart
 Marston, Kyla Elizabeth
 Martin, Emma Marie
 Martin, Michael Paul
 Masciarelli, Antonietta
 Matheson, Scott James
 Mathot, Barry William
 Matthews, Andrew Guy
 Matthews, David Robert
 May, Susan Letitia
 Mayboehm, Susan Maria
 McDonald, Andrew James
 McKenzie, Catherine Joy
 McLaren, Shelly Anne
 McLaughlin, Luke James
 McLetchie, Jane
 McNaughton, David Charles
 McTigue, William Richard
 Meier, Susanne
 Melder, Susanna Andrea Jacqueline
 Menon, Mini
 Metter, Igor
 Mezciems, Andrew Martin
 Micic, Anne Yelena
 Middleton, Tracey Vanessa
 Miller, Bernadette Mary
 Mills, Paul Brian
 Mills, Richard Howard
 Milvain, Danielle Jayne
 Mingo, Jose Manuel
 Mirams, Stephen James
 Moisidis, Effie Eytithia
 Moks, Carolyn Gabrielle
 Morgan, Suzanne Marie
 Morley, Elizabeth Maree
 Mouhtouris, Effie
 Muir, Kane Adam
 Munro, Cameron Hugh
 Murray-Hennessy, Andrew
 Naidos, Thalia

Nasralla, Mona
 Naylor, Jennifer Kay
 Neaves, Belinda Jane
 Nelson, Melissa Gai
 Ng Bee Kuan
 Ng Shao Lin
 Ng, Wah Kai
 Nguyen, Phuong Tuyet
 Nichols, James Andrew
 Nicholson, Joanna Justine
 Nickels, Tracey Doris
 Nolan, Christopher Michael
 Noyes-Brown, Lynette Gaye
 Nugara, Sharon Michelle
 O'Brien, Kerry Louise
 O'Hara, Andrew John
 O'Neill, John Joseph
 Oh Beng Teong
 Ooi Guat Beng
 Orlando, Antonio
 Osianlis, Maria
 Owens, Philip Graeme
 Paine, Richard Franklyn
 Partleton, Vicki Lyn
 Pattas, Anastasios Panagiotis
 Patterson, Marita Therese
 Pearman, Andrea Irene
 Peh Poh-Oon
 Pellegrino, Anita Lucy
 Perera, Sharon Mary
 Pham, Hieu
 Pham, Son Phu
 Pham, Thanh Duc
 Pham, Thuong Quoc
 Phillips, Christine Ellen
 Polster, Marc Leopold
 Pontifex, Simon Charles
 Poole, Jacinta Maree
 Pope, Stuart Gordon
 Presneill, Gregory James
 Pullen, Kingsley Andrew Nevill
 Rahardja, Mardiana
 Ramantas, Dennis
 Rapoport, Yuri
 Raymond, Gregory Vincent
 Reichart, Tania Maria
 Richards, Linda Jane
 Richardson, Louise Margaret
 Rigby, Jacqueline Terese
 Rodrigues, Pearl Judith
 Rooney, Sean Martin
 Rosamilia, Mariarosa
 Ross, Paula Kim
 Routley, Merrindal Lois
 Rubenstein, Paul Norman
 Rudd, Brett James
 Ruddick, Darren Charles
 Sagris, Paraskevi
 Sammut, Mark Anthony
 Sammut, Robert Louis
 Sanford, Craig Grant
 Sass, Jillian Kerrilee
 Scalzo, Marc Antony
 Scarlett, Alison Jane
 Schmidt, Mark Andrew
 Schwalb, Ehood Chaim
 Seaton, Barry Russell
 Seddon, Nicholas Richard
 Serpell, Andrea Kym
 Serraglio, Adrian
 Sezonov, Mark
 Shaw, Anthony William
 Shepherd, Stuart Andrew
 Skultety, Kathleen Monica
 Sleeman, Stuart Edward
 Slessar, Philip John
 Smirniotis, Theodore
 Spiliopoulos, Sam
 Stanojevic, Zvonko
 Starks, Philip Nicholas
 Starr, Gary
 Steer, Leesa Jane
 Stembergar, Liana
 Stewart, Fiona Elizabeth
 Stewart, Scott Ian
 Stinear, Timothy Paul
 Suen Kwok Yiu
 Sullivan, Paul Damian
 Taberner, Suzanne Elizabeth

Tang, Wai Yin
 Tangalakis, Constandinos
 Terry, Alister Durham
 Thai, Lang Tu
 Theobald, Gretta Marjorie
 Thian Sze How, Steven
 Thomas, Brian James
 Thomas, Marie Ellen
 Thompson, Geoffrey Stuart
 Thomson, Jennifer Sue
 Tickner, Ashley George
 Tierney, Claire Patricia
 Tkalcevic, Frank John
 Trembleau, Alain Paul
 Triantopoulos, Helen
 Tsitouridis, Ekaterina
 Tung, Shelley
 Turner, Gavan Robert
 Tyack, Scott Geoffrey
 Tymms, Andrew Michael
 Uppal, John Denis
 Ure, Fiona Gaye
 Valetic, Susan
 Van Buynder, Patricia Marie
 Van Raay, Nicole
 van der Schoot, Marcel Vale
 Vandenberg, Leon Chan
 Vanderlely, Roger
 Vayner, Galina
 Ventura, Margaret
 Vergakis, Peter
 Verkuylen, Amanda Joanne
 Vlachos, Jimmy
 Voudouris, Anna Margaret
 Waddle, Nicole Eileen
 Wain, Simon Brendan
 Waite, Erin Michele
 Wald, Ilana Josephine
 Walmsley, Caroline Jane
 Ward, Carolyn Maree
 Waring, Anthony Peter
 Weir, Megan Elizabeth
 Weller, Steven Gregory
 West, Julian Richard
 Wigley, James Lucas
 Wild, Steven Paul
 Williams, Corrie Elenor
 Williams, Linda Jane
 Williams, Peter Scott
 Wilson, Danielle
 Wilson, Sally Katrina
 Winstone, Linda Beverley
 Wolfe, Andrew Gregory
 Wong, Edmund
 Wong, Siew Ting
 Wong, Vera
 Wood, John Michael
 Woon Wee Young
 Wyper, Russell Broderick
 Yang, Hye Kyong
 Yann, Trevor Douglas
 Yap Che Wai
 Yeoh Yuat Tih, Ruth
 Yeung Chun Hung
 Yong Suk Kim
 Young, Julia Caitlin
 Zafirakis, Helen G
 Zegir, Roya
 Zergiotis, Sotiria
 Zervas, Tina
 Zgalin, Michelle Christa
 Zicopoulos, Victoria
 Zipper, Marcus Darren

Diploma in Australian Tourism

Adams, Joanne Maree
 Aitkin, Julie Gai
 Barr, Penelope Catherine
 Borenstein, Sharon
 Douglas, Simone Marie
 Einsiedel, Sally Louise
 Enkelman, Diana Halina
 Hart, Sarah Kate
 Judd, Andrew Charles
 Kain, Denise Allison
 Meldrum, Maria Anne
 Moore, Philippa Jane

Parker, Caroline Grace
 Roper, Lisa Alexandra
 Rose Meyer, Kevin Rajan Joseph
 Sapir, Lisa
 Self, Alison Faith
 Smith, Paul Anthony
 Wyld, Loretta Maria

Diploma in Asian Studies

Dewey, Deborah June

Diploma in Environmental Science

Berry, Christopher Godfrey
 Coulthard, Darryl Whitford
 deSilva, Tamara Imelda Mary
 Dickinson, Gary Thomas
 Latchford, Louise Jane
 Stevenson, Alan Charles

Diploma in Applied Japanese Linguistics

Harada, Etsuko
 Jackson, Toshiko
 Muranaka, Hiromi
 Sato, Megumi

Diploma in Japanese Business Communication

Osborne, Adrienne Jan

Diploma in Japanese Studies

Shinbo, Kuninori
 Suzuki, Atsushi

Diploma in Librarianship

Mackey, Mary Cecilia
 Walzl, Justini

Diploma in Business Systems

Chan, Norman
 Chua Long Siew
 Gan Soo Choon
 Gutierrez, Jose Maximiliano
 Hong Li Fang
 Lee Seet Cheng
 Lee Yick Fong
 Long Sheng Hu
 Maganty, Srinivas
 McKewen, Lance David
 Nath, Gupta Baikunth
 Ong, Boon Teck
 Qasim, Saleem
 Srimokra, Suchart
 Tan Goon Yean
 Tirimanne, Anthony Mahendra

Diploma in Education

Agelidis, Despina
 Andrew, Natasha Mai
 Arena, Angelina
 Athanasopoulos, Stavroula
 Athanassiou, Arthur
 Barrett, Rowena Joy
 Beadel, Dianne Patricia
 Beveridge, Jacqueline Ann
 Black, Andrew Stuart
 Blamey, Shona Jean
 Blight, Andrew Thomas
 Bradshaw, Maxine Metaxia

Brain, Tricia Irene
 Brasacchio, Maria Anne
 Bray, Hilary
 Bray, Robyn Ann
 Brew, Christine Robyn
 Burr, Brenda Rose
 Carter, Judith Anne
 Christie-Johnston, Dugald Alan
 Christopherson, Jane
 Chrysomalis, Anna
 Cooper, Anahita
 Cuddon, Katrina Shirley
 Dalwood, Christine
 Davis, Thi Gia Tram
 Day, Frank Thomas
 Deliougianis, Georgina
 Demarteau, Heike
 Dowd, Loretta Catherine
 Evans, Charles Douglas
 Finch, Patricia Ann
 Fitzgerald, Anthony Michael
 Fuller, Elizabeth
 Gamble, Allan Edward
 Garrett, Amanda Joy
 Gere, Carol Suzanne
 Geritz, Ronald Perzees
 Gilbert, Jane-Maree
 Gilbert, Karen Anne Judette
 Gray, Louise Rebecca
 Haddon, Joanne Maree
 Harker, Michael William
 Hatfield, Christopher Leonard
 Haugstetter, Hilary Ann
 Hayward, Viki May
 Head, Simon
 Hoffman, Leanne Carol
 Hogetts, Robin Jennifer
 Hurley, Patricia Anne
 Ibrahim, Abdullahi Aden
 Ioannidis, Maria
 Jahnecke, Gerd Gunter
 Johnstone, Susan Winifred
 Jones, Michelle Louise
 Joyce, Hilary
 Katsas, Mary
 Keenan, David Phillip
 Kent, Helen Mary
 Koh, Evelyn
 Kollias, Kerry Joy
 Kontogiannis, Kathy
 Korfiatis, Nicholas
 Kouridakis, Poly
 Koutsogiannakis, Georgia
 Kurek, John Basil
 Kyriakoulas, Georgina
 Kyriazis, Crissa
 Laing, Irene Doris
 Lapsanas, Kathy
 Laskaridis, Louis
 Laskaris, Helen
 Lawrence, Lynne Jean
 Leach, Stephen Thomas
 Lee, Dale Elizabeth
 Leong, Fay
 Liddle, Cecilia Marie
 Linardakis, Angela
 Livingstone, Peter Cameron
 Lough, Warwick John
 Lowy, Mark Eric
 Lyras, Kalliope
 MacKinnon, Elizabeth Fairlie
 MacVean, Denise Lynne
 Mandall, Irene
 Mannion, Andrew William
 Marinis, Helen
 McIver, Kerry Lee
 McKenna, Brendan Peter
 McMurray, Wayne Leslie Christopher
 Meltzer, Sybella
 Mikikits, Sharon
 Miodek, Susan
 Monseair, Robyne
 Moody, Stuart Craig
 Morgan, Peter Julian
 Moutsos, Kathy
 Murfet, Russell Craig
 Nainie, Joel Anthony
 Nathan, Meena
 Nemeth, Helga Anita

Noonan, Denis Edward
 Nyhuis, Robert John
 O'Callaghan, Christopher James
 O'Riordan, Helen
 O'Toole, Leah Eileen
 Panotopoulos, Vicky Akrivi
 Papakonstantinou, Aikaterini
 Patterson, Colin Peter
 Pavlidis, Eleni
 Perry, Lynette Kay
 Petrocco, Nadia
 Pico, Sandrine Marie-Josée
 Pipiris, Frosso
 Pizzev, Sarah Louise
 Powell, Andrew
 Pratt, Carol
 Prosenak, Suzanne Kathryn
 Pulsford, Stephen
 Rafferty, Clare Elizabeth
 Randall, Marion Margaret Moir
 Rappoccio, Carlo Alberto
 Recupero, Antonella
 Reimers, Tanya
 Ridley, Valerie Karen
 Samuel, Michele
 Sanderson, Ian Kevin
 Santilli, Maria Anne
 Scheitler, Laurence Agnes
 Sekker, Anthony
 Sfindilis, Pili
 Smith, Jeffrey Ronald
 Smith, Kym Maree
 Smith, Wendy Jane
 Smithers, Jugana
 Snowball, Susan Carolyn
 Sourdis, Ilias
 Stirling, Anthony James
 Stranieri, Annalucia Domenica
 Sutherland, Ann-Elizabeth Caroline
 Taylor, Geoffrey Hampson
 Testa, Bruno Robert
 Thane, Bronwyn Eris
 Thane, Carolyn Louise
 Theobald, Maureen Anne
 Thomas, Susan Elizabeth
 Trudeau, Christine Jan
 Tsantilas, Kitsa
 Tzamouranis, Vivian
 Vakalis, Christine
 Valcanis, Angelique
 Vamvakas, Anastasia
 Van Der Wielen, Sylvia Elisabeth
 Varsamis, Maria
 Venizelos, Kaliroy
 Verhagen, Wendy Joy
 Wan Bing Yuen
 Wassermann, Arianne
 Webster, Kim Maree
 Westwood, Graham Bruce
 Wheeler-Cuffe, Dean Helsham
 White, Mark Peter
 Wilding, Jasley Anne
 Wilson, Shyamala Rajamany
 Wisse, Sharon
 Witt, Andrew John
 Wood, John Anthony
 Yu, Lawrence Ting Tung
 Zinchovschiy, Anna Teresa

Diploma in Educational Psychology

Aaronfeld, Odhette
 Alesi, Rita
 Barac, Jenny Helen
 Blainey, Janet Louise
 Bron, Mara Beverley
 Bruell, Franya Helen
 Canterbury, Rosemary June
 Chambers, Susan Carol
 Cosic, Sanja
 Demir, Sheena Cameron
 Discenza, Angela Maria
 Duffy, Fiona Marie
 Golden, Jennifer Elizabeth
 Gorman-Alesi, Angela Fernanda
 Guidara, Daniela Anne
 Gvozden, Lidia Klara

Heyne, David Andrew
 Hunter, Mary Therese
 Ickowicz, Rosa
 Kendall, Katherine Mary
 Kibel, Marcus Rohan
 Langford, Pamela Jean
 Mallett, Terri Suzanne
 Mangani, Antoinette Loren
 Mason, Janet Bernadette
 Melville, Denise Lena
 Noblett, Janet Mary
 Penoglou, Gina Zoi
 Purgar, Daniela Antoinette
 Ratcliff, Jeanette Doris
 Robotis, Dimitra
 Stocks, Ian Victor
 Tchakerian, Doreen
 Tsoudis, Petroula
 Warner, Michael Robert
 Warren, Elizabeth
 Waterfield, David John
 Weaver, Noel Fraser
 Wong, Denise Leigh

Diploma in Teaching English to Speakers of Other Languages

Adamson, Andrew Foster
 Auld, Joan Rita
 Bachsinar, Janet Madeline
 Bartley, Anne Mary
 Brand, Josephine Ann
 Deslandes, Jennifer Margaret
 Hua Choi Chiu-Ping, Florence
 James, Elizabeth Anne
 Logan, Antoinette
 Rlue, Lesley E
 Soo, Brian Allan
 Trichter, Lina
 Trounce, Russell Hendy
 Unsworth, Wilhelmina Wylie

Diploma in Commercial Law

Blevin, Andrew John
 Catalano, Angelo
 Hargrave, Judith Ann
 Harrick, Mark Christopher
 Kennedy, Gerard Desmond
 Kilbey, Gregory John
 Low Chee Keong
 Macaulay, Cameron Clyde
 Min Wei Tham
 Moffatt, Ian
 Pascarl, Ian Stanley
 Tang Tung Thai, Joseph
 Vasilopoulos, Anthony

Diploma in Family Law

Birch, Sarnia Ann de Carteret
 Fildes, Paul
 Hinkley, Evelyn Nora Margaret
 Kordos, Vasilios
 Ward, Jennifer Ethel
 Zaparas-Kalaitzis, Evangelia

Diploma in International and Comparative Law

Morice, Michael John Franklin

Diploma in Legal Studies

Leonidas, George
 Rose, Peter Norman

Diploma in Taxation Law

Ashiabor, Hope Kwaku
 Halperin, Graeme Ian

Loh Mun Chiew, Peter
MacGillivray, Brett Andrew
Madigan, Brian John
Masango, Tholimpilo
Mouritz, David Mark
Tobin, Mark David

Diploma in Immunology

Chuang, Jeff Szuchieh
Guin, Emilia
Moon, Jane
Raines, Geoffrey Ian
Sawyer, Margaret Claire

Diploma in Microbiology

Sittambalam, Sibanayaki

Diploma of Venereology

Carmody, Christopher James
Cherny, Vivienne
Dammary, Edward Robert David
Houghton, Debra Kaye
Meese, Peter Dominic
Rowbottom, Jill Hamilton
Savage, Janet Clare
Yoganathan, Seenivasagam

