

PATHWAYS TO PHD

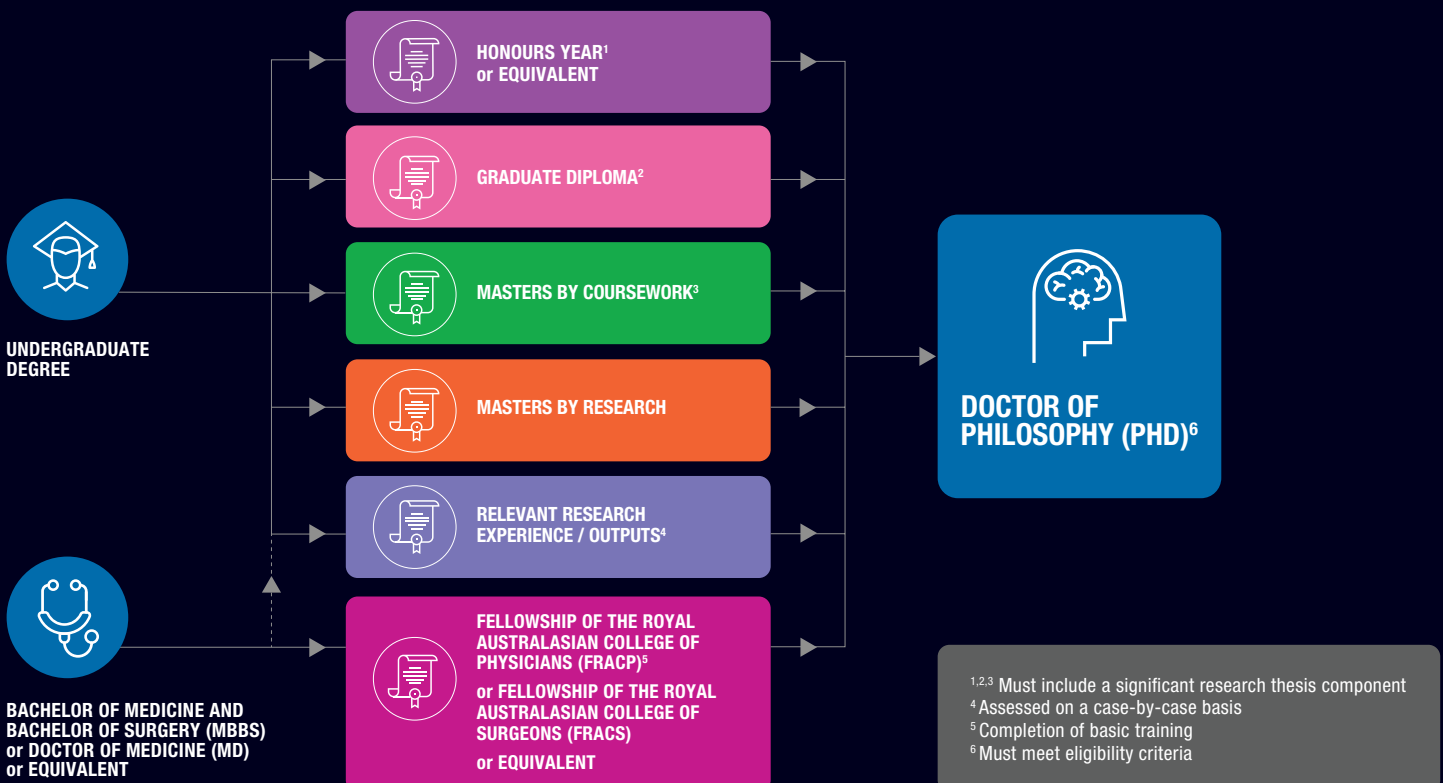
ABOUT US

Monash Medicine, Nursing and Health Sciences conducts research that makes maximum impact on society through an ongoing pursuit of excellence and innovation. By giving the world's brightest minds access to the world's best technologies, we create a culture that supports true research excellence and gives us the opportunity to tackle global problems, and save and transform lives.

TOP 100 IN WORLD UNIVERSITY RANKINGS
(Times Higher Education World University Ranking 2019-2020)

PATHWAYS TO PHD

See how you can start your PhD journey from a range of degrees.





ARE YOU READY TO IMMERSE YOURSELF IN AN INNOVATIVE RESEARCH HUB AND GAIN THE SKILLS TO MAKE REAL IMPACT? HERE ARE THE STEPS YOU NEED TO TAKE.

Admission applications can be submitted and students can start anytime throughout the year.

Scholarship applications are accepted four rounds each year:

- International applicants: Applications close 31 March & 31 August
- Domestic applicants: Applications close 31 May & 31 October

THE APPLICATION PROCESS

1. Check your eligibility
2. Identify a potential supervisor using Supervisor Connect
3. Contact a research supervisor and complete the Expression of Interest (Eoi) form
4. Receive an invitation to apply

Apply online: monash.edu/graduate-research/future-students/apply

FIND YOUR RESEARCH PROJECT

Visit our Supervisor Connect website to find hundreds of potential research projects in one easily searchable hub. When you find a project of interest, simply submit an expression of interest and liaise directly with the supervisor to discuss the project.

Visit: monash.edu/medicine/research/supervisorconnect

PATHWAY STUDY AND PACKAGED OFFERS

If you do not meet the eligibility requirements for direct admission into our PhD, there are Monash pathway courses you can take. In some cases, you can apply for a pathway study and a PhD at the same time and we can package these course offers. For example:

- English Bridging Program + PhD
- Graduate Diploma + PhD

After successfully completing your pathway study and meeting all conditions (including grades) specified in the offer letter, you can transition straight into PhD at Monash University.

For more information, visit monash.edu/medicine/research/grad-research/pathways-to-phd

CONTACT US

Graduate Research

T 61 3 9905 4313

E med-research.degrees@monash.edu

monash.edu/medicine/research

monash.edu/graduate-research