

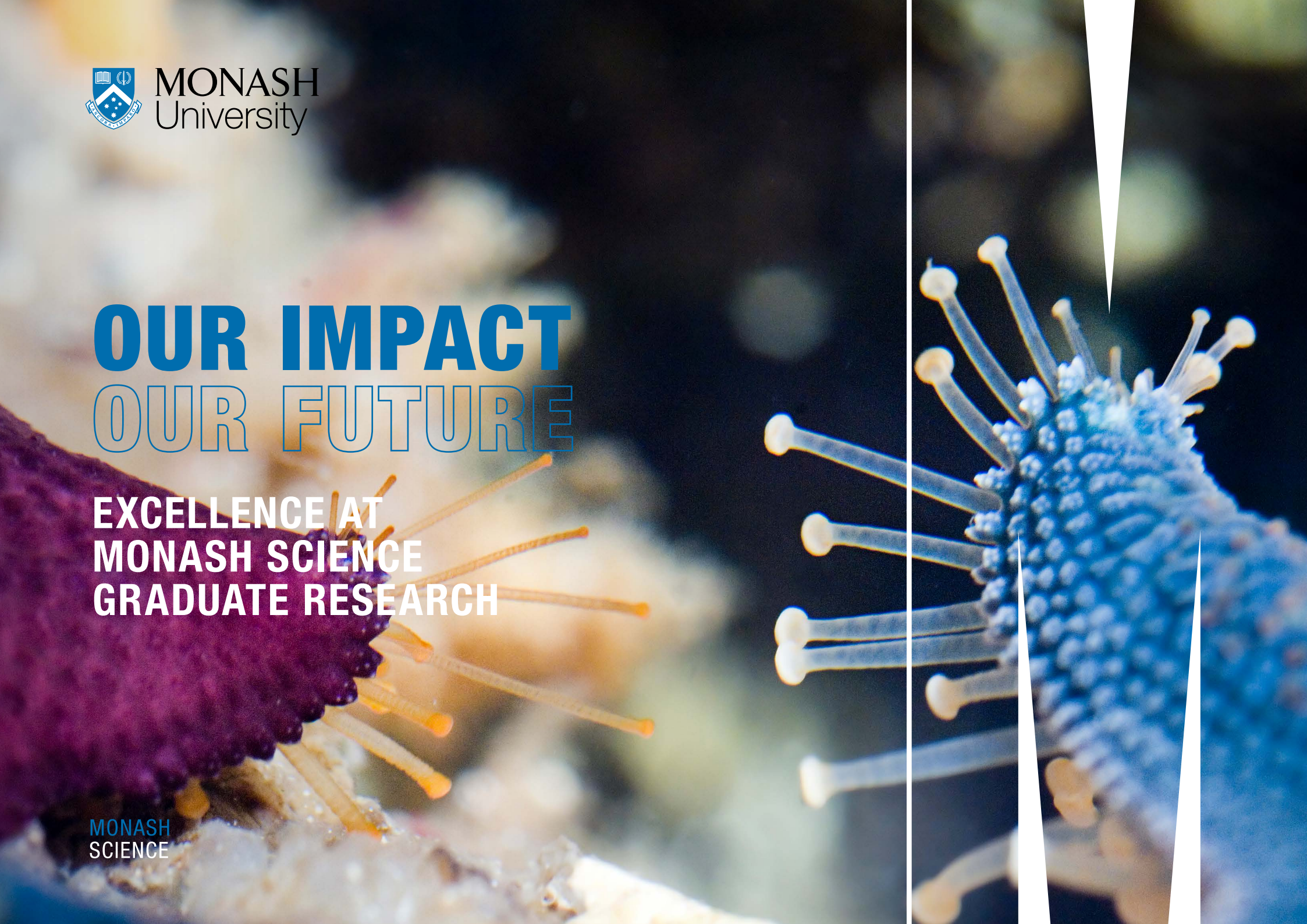


MONASH
University

OUR IMPACT **OUR FUTURE**

**EXCELLENCE AT
MONASH SCIENCE
GRADUATE RESEARCH**

**MONASH
SCIENCE**





ABOUT MONASH UNIVERSITY

Monash University, a globally recognised research-intensive institution, is dedicated to achieving excellence and making a lasting impact.

With a distinguished position among the top 100 universities worldwide and ranking in the top 3 in Australia¹, we take great pride in our pioneering research endeavours and entrepreneurial mindset.

At Monash, our students are presented with unparalleled opportunities to learn from world-renowned faculty and engage in collaborations with leading researchers. As a graduate research student, you become an integral part of a vibrant community that upholds the highest standards of research quality and strives for excellence.

Our impressive track record of producing impactful research that instigates real change in the world ensures that our students are equipped to tackle the challenges of the 21st century with confidence.

Beyond our world-class research, Monash University offers an exceptional learning environment characterised by a diverse and inclusive community, state-of-the-art facilities, and a strong emphasis on career outcomes. We are proud to be a destination where students can flourish academically, personally, and professionally.

If you are seeking a forward-thinking, research-intensive institution that is committed to making a tangible impact and driving transformative change, Monash University is the ideal choice. We warmly invite you to join our community of excellence and embark on a remarkable educational journey with us.

¹ QS World University Rankings 2026 and Times Higher Education (THE) World University Rankings 2026.

MONASH SCIENCE IS A VIBRANT, DYNAMIC AND WORLD-RENOWNED COMMUNITY AT THE FOREFRONT OF INNOVATION AND DISCOVERY

We embrace the theoretical and the experimental.
Our research intersects with industry and government.
Our scientists play a leading role on the national and international stage, collaborating with major institutions and industries around the world.

Fundamental to our vision is the training of future researchers and leaders who make a vital contribution to the Australian and global communities.

Our students are supervised, nurtured and mentored by scientists who are leaders of their disciplines – we are preparing our graduates to **think big and make an impact.**

GLOBAL RANK OF =#36
(QS World University Rankings)

**RANKED TOP
100
SCHOOLS OF**

- Biological Sciences
- Chemistry
- Mathematics
- Earth, Atmosphere and Environment
- Physics and Astronomy
- School of Science, Monash University Malaysia

=#58
(THE World University Rankings)

GRADUATE RESEARCH
STUDENTS

620+

(2025)

ACADEMIC STAFF

1,100+

(2025)

HDR ALUMNI

3,400+

(2026)

TOTAL ALUMNI

49,000+



MORE THAN A GRADUATE RESEARCH DEGREE

THE MONASH SCIENCE PHD – MAKE A DIFFERENCE

The Monash Science PhD provides opportunity for a original research project that will equip you for success in academia, industry, government or the community after graduation.

Our PhD sets you apart by equipping you with a diverse skill set that empowers you to make a lasting impact and drive change across multiple domains. Whether your path leads to academia, industry, government, or the community, the Monash Science PhD journey prepares you to excel and thrive.

As a university with strong international academic and industry networks you will also develop key contacts and partnerships that will enrich your study and enhance your career.

There are also opportunities available for you to undertake a jointly awarded international PhD with partner universities in Germany, England, India and China, including extended overseas experience with the partners.



A man with glasses and a grey lab coat is looking intently at a large animal skeleton, possibly a pig, which is mounted on a stand. The skeleton is the central focus, with its skull and ribcage clearly visible. The background is dark, with some laboratory equipment and a window with a patterned curtain visible on the left. The overall scene is a laboratory or museum setting.

THE MONASH MASTER'S PROGRAM

Our institution also provides research master's degrees, which involve an intensive two-year full-time study of an independent research problem. By critically analysing and interpreting research, you will be able to contribute to your field of study and facilitate opportunities for further learning.

MPhil

Pursuing a Master of Philosophy will equip you with advanced research skills and specialised knowledge, leading to career opportunities in various sectors.

MSc (Res)

Our Master of Science (Research) program in Monash Malaysia enables you to deepen your understanding of science and enhance your career prospects or pursue further research. Your independent research work will be expected to have a significant impact and change in your chosen field of study, and demonstrate your capacity to conduct research autonomously.



To find out more about our graduate research degrees, visit:
go.monash.edu/sci-grad-res

MONASH SCIENCE A RESEARCH POWERHOUSE

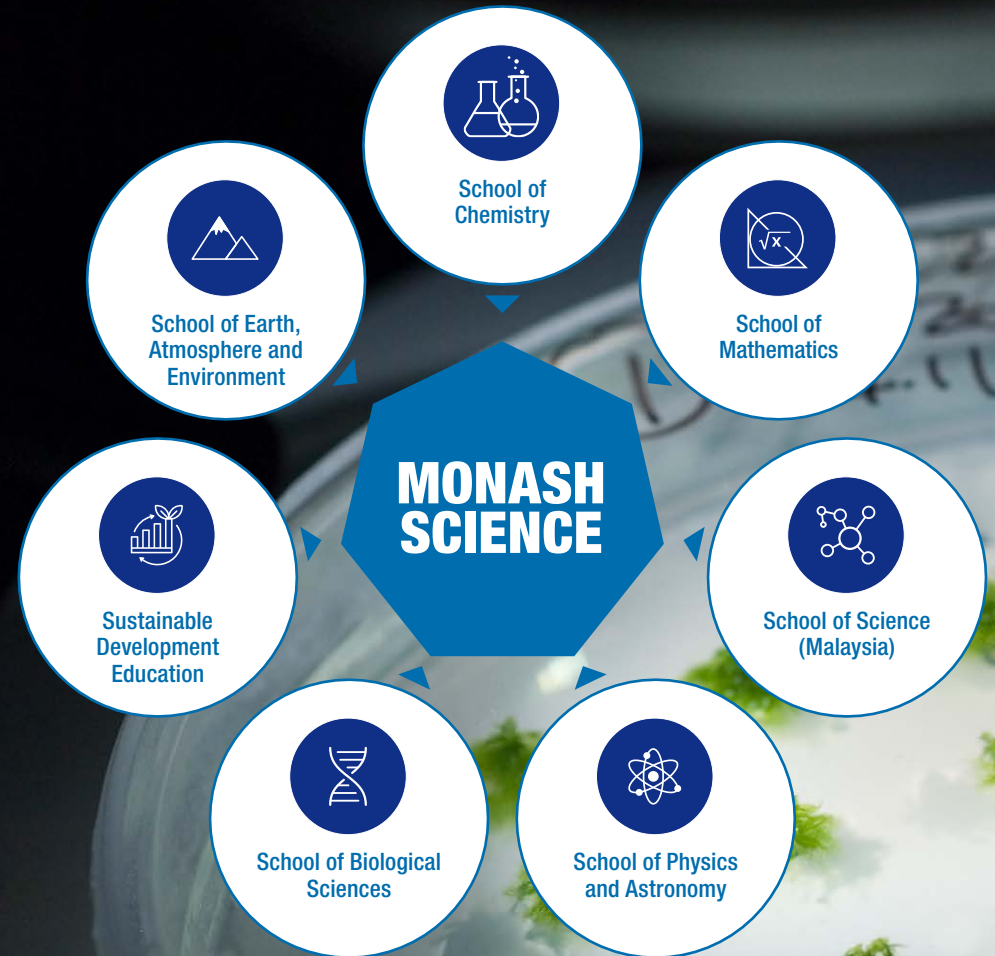
The faculty's research is at the forefront of innovation and discovery. Our researchers have been involved in some of the biggest scientific outcomes in the world.

RESEARCH STRENGTHS

- Energy and materials
- Genetic, genomics, and health
- Environmental change and adaptation
- Evolution of the Earth and Universe
- Solutions for a big data world
- Synthesis for functions
- Mathematical networks, space, and symmetry
- State-of-the-art imaging resources

RESEARCH CENTRES

- Centre for Quantitative Finance and Investment Strategies (CQFIS)
- Monash Centre for Atomically Thin Materials (MCATM)
- Centre for Modelling of Stochastic Systems (CMSS)



INDUSTRY ENGAGEMENT

PhD research internships offer you the opportunity to apply your research skills by working on research projects in industry. Through a variety of pathways, our highly skilled PhD students can undertake internship as part of their research training. Projects are co-designed by industry partners including enterprises, businesses, and government agencies.

YOU CAN BENEFIT FROM:

- Amplify the impact of your research skills and theoretical knowledge through hands-on application, generating tangible results in practical settings.
- Elevate your employability to new heights by gaining invaluable industry experience alongside your PhD studies.
- Foster extensive networks within the professional sphere, forging connections that can shape your future career and research opportunities.
- Make a meaningful contribution to industry by actively applying your expertise, collaborating with professionals, and addressing real industry challenges.



Here are some additional resources that you may find helpful:

MONASH PHD INDUSTRY ENGAGEMENT
go.monash.edu/grad-res-internships

INDUSTRY PROGRAMS
go.monash.edu/grad-prog-industry

GLOBAL OPPORTUNITY

By choosing to enrol at Monash, you will become a vital part of a university that possesses the necessary international outlook and networks to make a significant impact and create change on a global level.

Our widespread global presence provides an expansive platform for impactful change. With our joint PhD programs in collaboration with top universities worldwide, you'll harness the combined expertise and resources of two institutions, earning a prestigious jointly awarded degree. Embrace the power of collaboration and propel your research career to new heights.

JOINT PHD PROGRAMS INCLUDE:

- Indian Institute of Technology Bombay (IITB), India
- University of Bath, United Kingdom
- University of Warwick, United Kingdom
- Universität Leipzig, Germany
- Bayreuth University, Germany
- Southeast University, China

INTERESTED IN TAKING YOUR PHD TO THE NEXT LEVEL?



To learn more, visit:
go.monash.edu/sci-int-collab



ALUMNI SUCCESS SHAPING THE FUTURE

At Monash Science, our PhD provides an exceptional platform for aspiring scholars to thrive in diverse professional arenas. Our graduates emerge with an advanced understanding of their fields and a comprehensive skill set that equips them for success in academia, industry, and government sectors. We take immense pride in the achievements of our alumni, who continue to make a significant impact across various domains.

Our PhD empowers graduates for diverse career paths. A substantial number of our alumni excel in academia, securing faculty positions in prestigious universities, where they become influential researchers, educators, and mentors. Our PhD also equips graduates for success in the private sector, with interdisciplinary research fostering adaptable problem-solving skills for industries. Additionally, our alumni assume leadership roles in government agencies, research institutions, and policy think tanks, actively shaping public policy and addressing complex societal challenges. The remarkable achievements of our alumni across academia, industry, and government sectors reflect the quality and impact of our PhD.

JOIN OUR ALUMNI NETWORK

When you choose Monash Science for your PhD journey, you become part of a thriving and dynamic community. Our extensive alumni network provides ongoing support, mentorship, and collaboration opportunities. By connecting with our esteemed graduates, you gain access to a diverse range of career pathways and valuable connections that will enhance your professional growth.

MEET OUR ALUMNI

Our alumni have embraced the transformative power of a PhD at Monash Science, propelling their careers to extraordinary heights. Hear their stories, witness their achievements, and gain invaluable insights from those who have walked the path before you.



Hear from some of our PhD alumni:
go.monash.edu/sci-phd-stories



| Global Destination | Count |
|--------------------|-------|
| Australia | 2450 |
| Malaysia | 164 |
| USA | 127 |
| United Kingdom | 79 |
| India | 69 |
| Canada | 46 |
| Germany | 38 |
| China | 34 |
| Singapore | 24 |
| Indonesia | 21 |
| Thailand | 21 |
| New Zealand | 19 |
| France | 15 |
| Sweden | 14 |
| Bangladesh | 9 |
| Sri Lanka | 8 |
| Hong Kong | 7 |
| Switzerland | 7 |
| Denmark | 6 |
| Netherlands | 6 |
| Pakistan | 6 |
| Other | 271 |

FOSTERING A THRIVING COMMUNITY

At Monash Science, we prioritise mental health and inclusivity, and hope to create lasting change and empower our graduate research students to achieve their academic and personal goals.



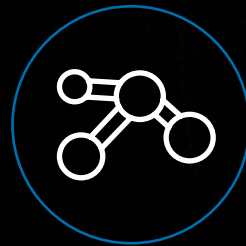
WELLBEING

Monash University places a significant emphasis on supporting the mental health and inclusivity of our graduate research students. We understand that pursuing advanced studies can be challenging, and we are dedicated to providing comprehensive assistance. Recognising the impact of mental well-being on academic success, we offer tailored resources and services, including counseling services, stress management workshops, and resilience seminars, to ensure students have access to a safe space for discussion.



ENGLISH SUPPORT

We provide comprehensive English language support to foster effective academic communication and promote confidence among all students, regardless of their background.



INCLUSIVE COMMUNITY

We are committed to creating an inclusive environment that celebrates diversity and cultural understanding through events, training, and initiatives.

HOW TO APPLY

Are you prepared to fully engage yourself in an innovative research hub and acquire the necessary skills to create tangible influence?

HERE ARE THE STEPS YOU NEED TO TAKE:

1. Check your eligibility at: go.monash.edu/sci-gr-apply
2. Identify a potential supervisor using: go.monash.edu/sci-find-supervisor
3. Prepare your expertise statement and research proposal
4. Gather your documents
5. Apply for a scholarship
6. Submit your application online at: myapp.monash.edu

APPLY FOR A RESEARCH PROGRAM AND A SCHOLARSHIP

- Applications for admission to a research degree can be made at any time.
- Candidates applying for research scholarships need to submit an application as per the following dates.

SCHOLARSHIP APPLICATION DATES

| ROUND | APPLICANT TYPE | APPLICATIONS OPEN | APPLICATIONS CLOSE | ENROLMENT PERIOD |
|-------|----------------|-------------------|--------------------|--------------------------------------|
| 1 | International | 1 September | 31 March | July – December of the current year |
| 2 | Domestic | 1 November | 31 May | July – December of the current year |
| 3 | International | 4 May | 31 July | January – June of the following year |
| 4 | Domestic | 1 June | 31 October | January – June of the following year |



Check your eligibility at:
go.monash.edu/sci-gr-apply





BE THE CHANGE

FURTHER INFORMATION

SCIENCE GRADUATE RESEARCH

go.monash.edu/sci-grad-res

INTERNATIONAL STUDENTS

monash.edu/study/international

MONASH SCIENCE

WEBSITE

monash.edu/science

TIKTOK

[@monash_science](https://www.tiktok.com/@monash_science)

LINKEDIN

linkedin.com/company/monashscience

INSTAGRAM

[@monash_science](https://www.instagram.com/monash_science)

BLUESKY SOCIAL

[@monashscience.bsky.social](https://monashscience.bsky.social)

CONTACT US

**FACULTY OF SCIENCE
RESEARCH OFFICE
MONASH UNIVERSITY**

T +61 3 9905 8870

E SCI-HDR-ENQUIRIES@MONASH.EDU