

**Domain Park Flats**  
**Robin Boyd**  
**1962**  
**Victoria**  
**Australia**



## Project Details

Project Name:	Domain Park Flats
Year:	1962
Address:	193 Domain Road, South Yarra VIC 3141
Type:	Linear Corner Block
Client:	Lend Lease
Practice:	Grounds, Romberg and Boyd
Lead Architect:	Robin Boyd

## Building Details

Stories:	20
Site Area:	2315m <sup>2</sup>
Dwelling Area:	5220m <sup>2</sup>
Common spaces and Circulation area:	1325m <sup>2</sup>
Floor Space Ratio:	2.8 : 1
Dwellings per Hectare:	260
Total Number of Dwellings:	58
Deep Soil	9%
Landscape area:	22%
Car Parking:	75

Domain Park Flats  
Robin Boyd  
1962, Victoria, Australia

Sited overlooking Melbourne's expansive Royal Botanic Gardens, Robin Boyd's Domain Park Flats (1962) presented a new vision for apartment living in Australia. With a brief to take advantage of Victoria's newly introduced apartment density and height regulations, the building extends twenty storeys high and at the time of its completion, was the state's tallest residential building. Notably, the building was also the first to incorporate air conditioning into high-rise housing in Melbourne.

With a tall, narrow profile, the building's floorplan allows each of the 58 apartments to enjoy both northern and southern aspects, with views over the gardens. There is a combination of 2, 3 and 4 bedroom units, each provided with a north-facing balcony accessed from the living space.

Circulation is provided through two concrete lift and stair cores expressed on the building's southern façade, with direct connection to each apartment entry at every level and the basement carparking below. The provision of these cores externally allowed Boyd to separate them from the main floorplate, reducing the impact of circulation and air conditioning plant noise on the living areas. At ground level, a large open-plan foyer gives access to Domain Road via a ramp.



Top: Building in context, Domain Park Flats, 1962, South Yarra, Australia. Mauro Baracco  
Bottom: Ground floor foyer interiors, Domain Park Flats, 1962, South Yarra, Australia. Mark Strizic, 1928-2012.



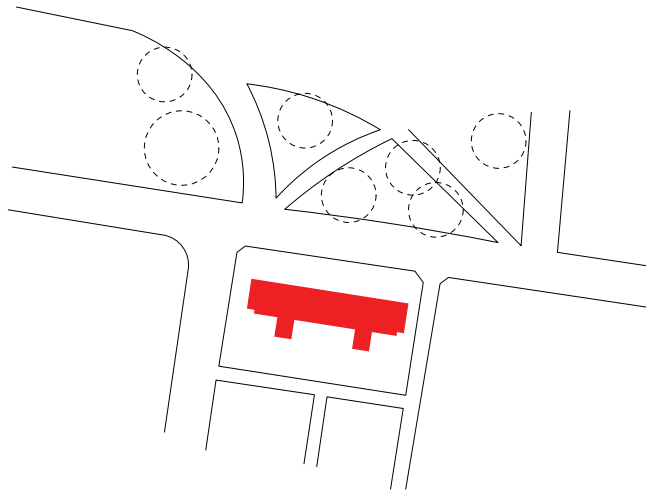
Top left: Northern facade with inset balconies, Domain Park Flats, 1962, South Yarra, Australia.

Top right: Eastern facade street view, Domain Park Flats, 1962, South Yarra, Australia.

Bottom: View from street of northern facade, Domain Park Flats, 1962, South Yarra, Australia. Mark Strizic, 1928-2012.

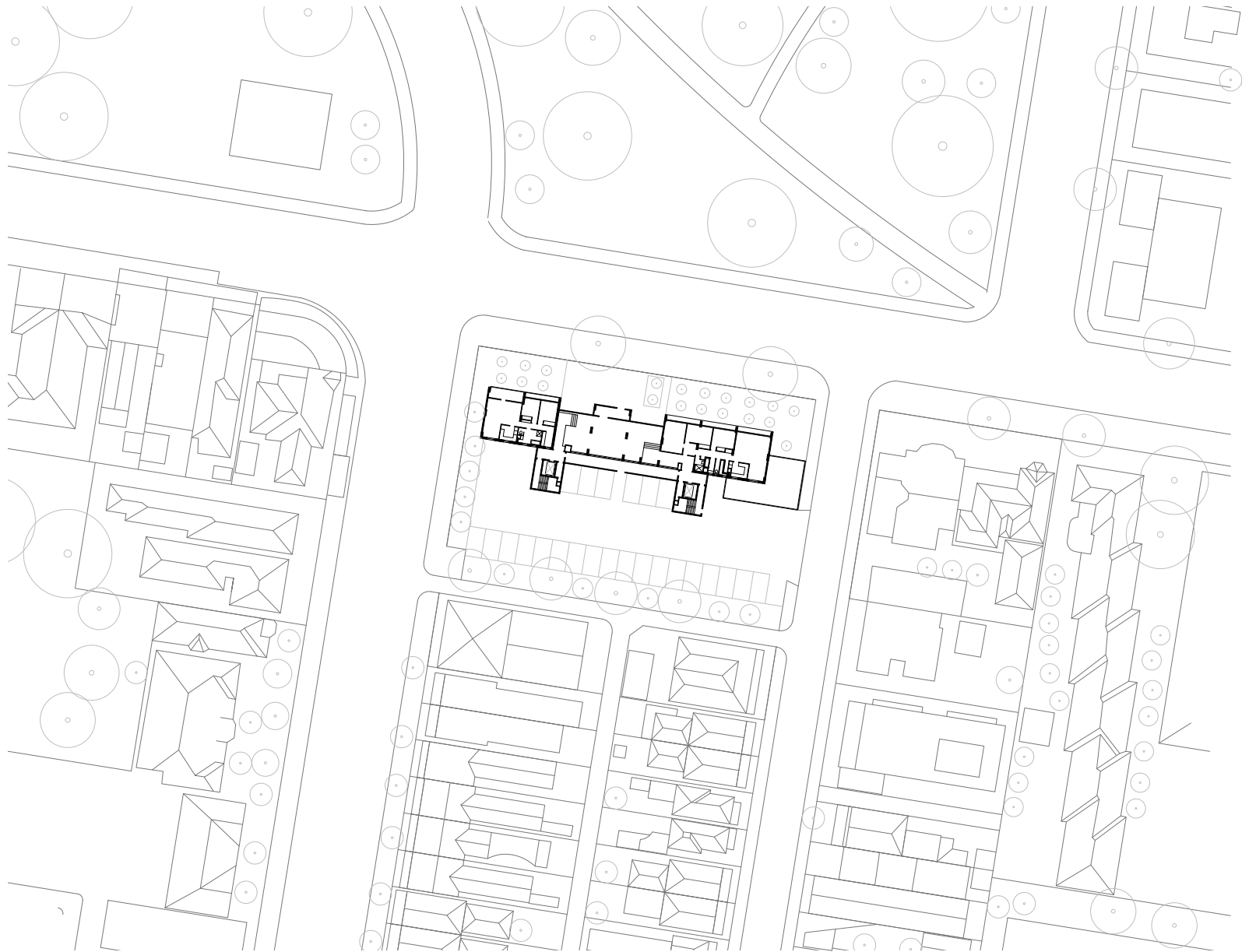


View of eastern facade from Domain Street, Domain Park Flats, 1962, South Yarra, Australia. Mark Strizic, 1928-2012.

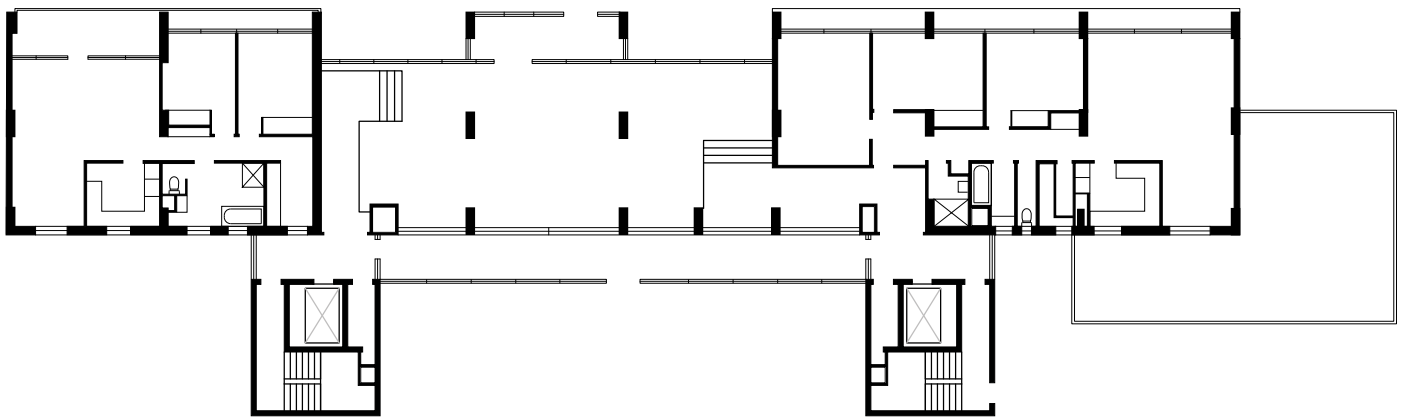




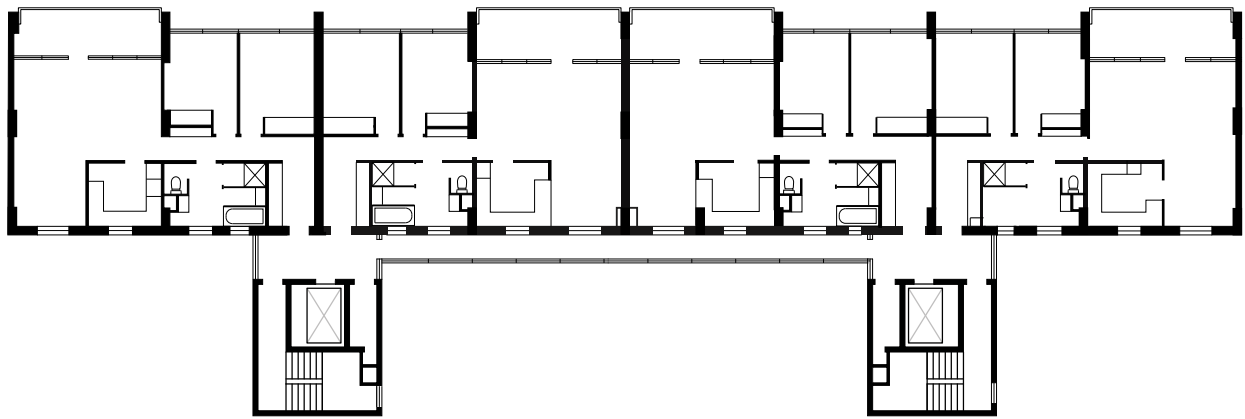
Context Plan (Scale 1:3000).



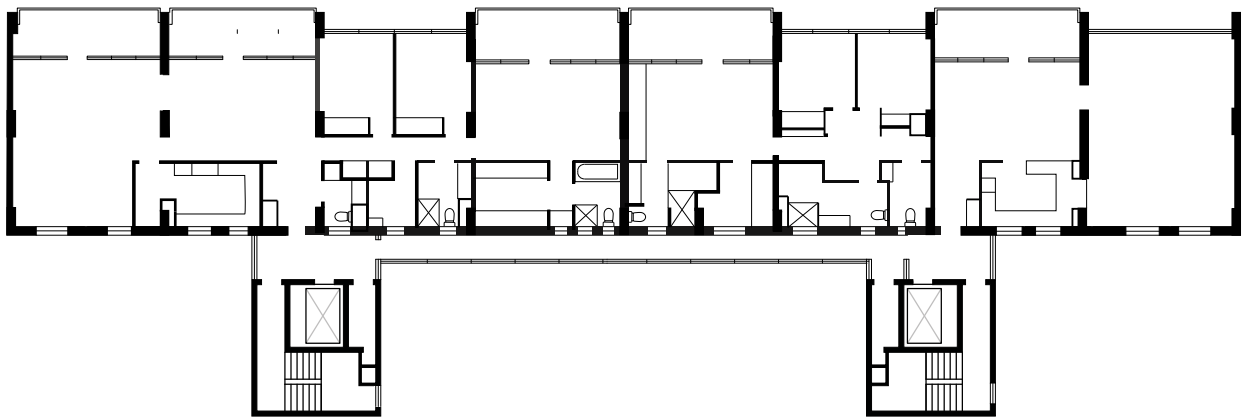
Site Plan (Scale 1:1000).



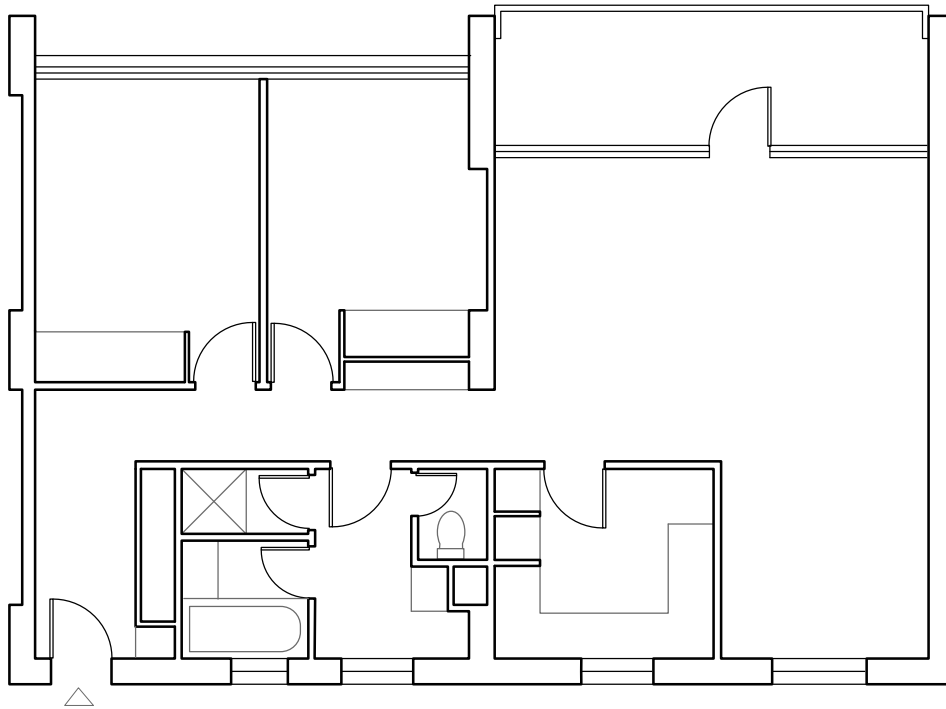
Ground Floor Plan (Scale 1:300).



Typical Plan, Level 3 (Scale 1:300).



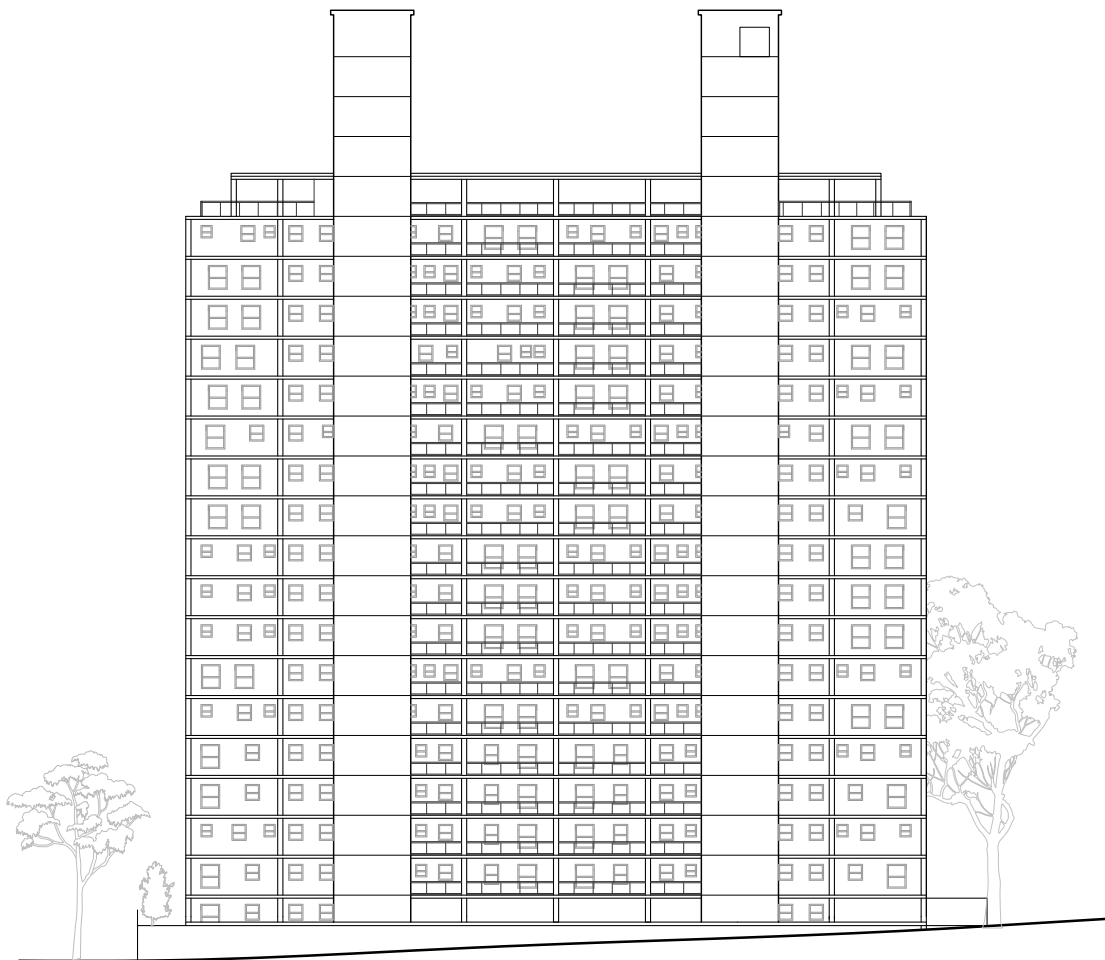
Typical Plan, Level Fourteen (Scale 1:300).



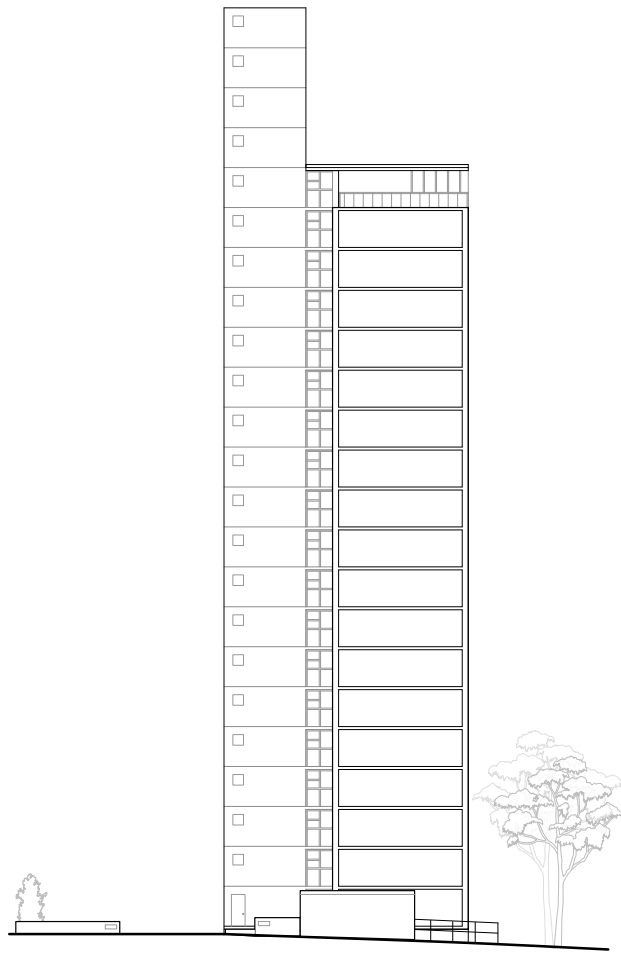
Unit Plan, Type A (Scale 1:100).



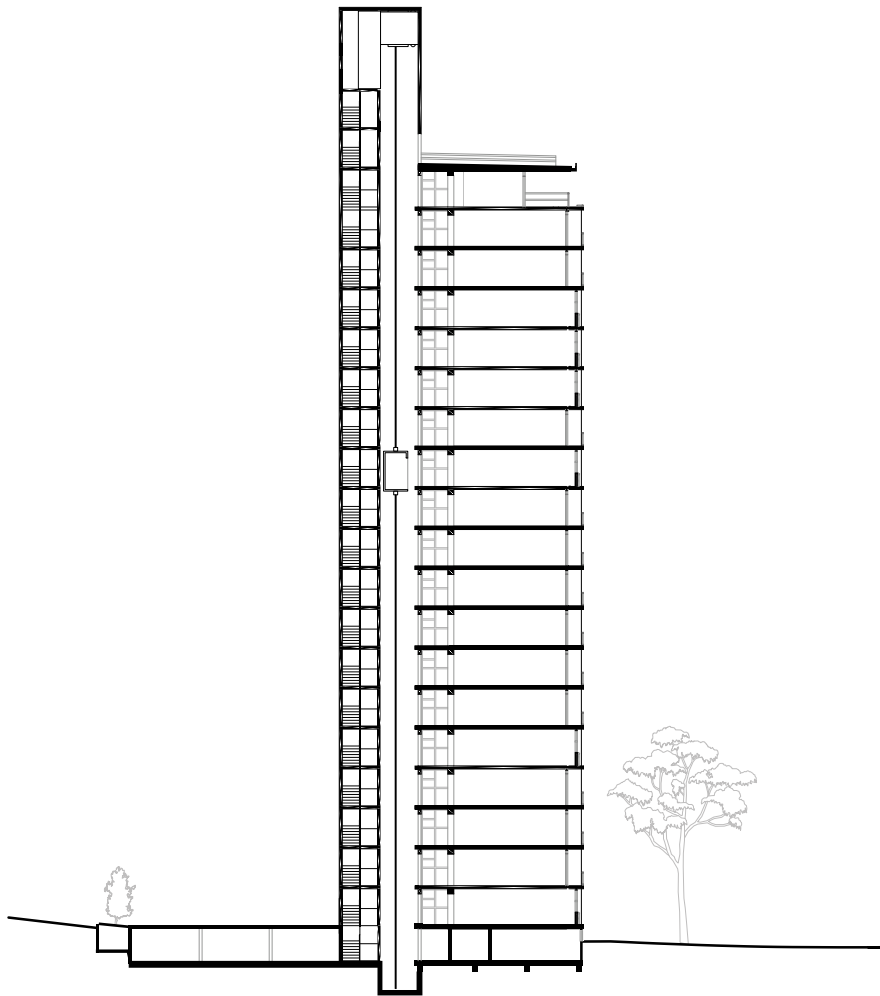
North Elevation (Scale 1:500).



South Elevation (Scale 1:500).



East Elevation (Scale 1:500).



North-South Section (Scale 1:500).