

MASTER OF ADVANCED NURSING NURSING LEADERSHIP AND MANAGEMENT

If you are a nurse aspiring to or currently holding a leadership position, then this specialisation is for you. The specialisation develops knowledge and applied skills for both leadership and management roles in healthcare, allowing you to confidently lead clinical teams. The focus of these units provides the opportunity for you to explore your own clinical leadership style whilst enabling you with evidence based knowledge.

WHY STUDY AT MONASH

- Complete a specialisation in Leadership and Management in 12 months
- Content developed and delivered by recognised experts
- Flexible learning delivery modes – study on campus or online
- Study by all coursework or combine coursework and a minor thesis
- Elective units allow you to meet your career aspirations
- Network with like-minded nurses wanting to advance their careers
- Access to a world class library and its resources to aid your learning.

COURSE CONTENTS INCLUDE

NUR5327 Management and leadership of professional nursing practice

NUR5325 Clinical leadership in nursing

NUR5326 Leading improvement and innovation in the quality and safety of nursing and health care
OR

MPH5268 Financial issues in health care management

This specialisation can be taken by coursework or a combination of coursework and research.

STUDYING AT MONASH UNIVERSITY AUSTRALIA

Studying at Monash University means studying at one of the world's top 100 universities. And we are the only Australian member of the prestigious M8 Alliance of academic health centres and medical universities.

Your studies at Monash Nursing and Midwifery will be in partnership with the widest range of health care academics, with links to multiple professional bodies – we ensure your education is current and in-line with the latest in evidence-based practice.

A graduate degree from Monash Nursing and Midwifery enables you to achieve so much, both personally and professionally. You will be at the forefront of the next generation of nursing and midwifery leaders, challenging preconceptions and leading the way in new techniques, evidence-based practice and innovative ways of working.

For further information visit
monash.edu/medicine/nursing

MASTER OF ADVANCED NURSING

Advanced and highly flexible, this course is designed to prepare you, a registered nurse, with leadership skills, to plan, implement, coordinate and evaluate health care, as well as formulate policy for a diverse and multicultural society.

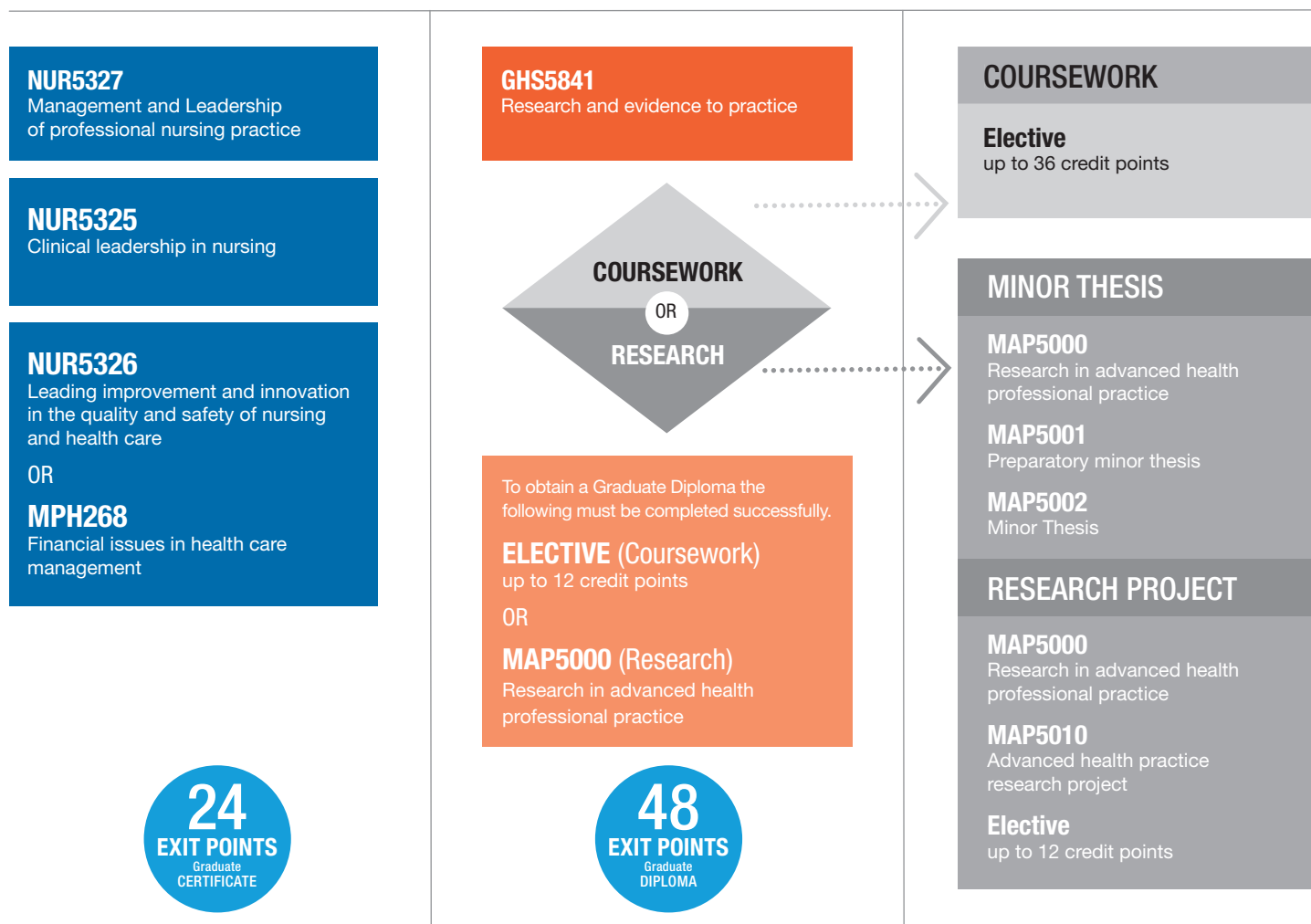
On completion of the Master of Advanced Nursing, you will be equipped to contribute to the health of individuals, families, communities and the development of the profession.

EXIT POINTS

Students wishing to exit this course may also apply to graduate with one of the following, provided they have satisfied the requirements for the award:

- Graduate Certificate of Advanced Nursing
- Graduate Diploma of Advanced Nursing

COURSEWORK PATHWAY



ELECTIVE LIST

For a list of approved electives for the Master of Advanced Nursing, please refer to:

<http://www.monash.edu/pubs/2019handbooks/courses/M6006.html>

Students may elect to enrol in units from other Schools and Faculties within the University, with permission of the Master of Advanced Nursing (MAN) convener.