

METABOLISM, DIABETES AND OBESITY

THOUGHT LEADERS AND EXPERTS
LIST

MONASH UNIVERSITY METABOLISM, DIABETES AND OBESITY THOUGHT LEADERS AND EXPERTS

Name/Title	Confirmed Biography	Monash Research Profile Link
Professor Tony Tiganis	<p>Professor Tony Tiganis is Professor of Biochemistry and Molecular Biology and Head of the Metabolism, Diabetes and Obesity Program within the Monash Biomedicine Discovery Institute. He leads a multidisciplinary team investigating the molecular mechanisms that drive obesity and diabetes and how these metabolic states influence cancer development and immune function.</p> <p>His research focuses on cellular signalling networks, particularly the role of protein tyrosine phosphatases in metabolism, immunology, and cancer. By decoding these pathways, he and his laboratory aims to identify new therapeutic targets for metabolic disease and its devastating comorbidities.</p>	<p>Research Profile</p>
Professor Mark Febbraio	<p>Professor Mark Febbraio is a National Health and Medical Research Council of Australia Investigator Level 3 and currently the Head of the Cellular and Molecular Metabolism Laboratory within the Drug Discovery Program at Monash Institute of Pharmaceutical Sciences, Monash University. He is the Founder and Chief Scientist of Celesta Therapeutics and a scientific advisor for Gallant Pharma. His research is focussed on understanding mechanisms associated with exercise, obesity, type 2 diabetes and cancer and his aim is to develop novel drugs to treat lifestyle related diseases. He has authored ~300 peer reviewed papers in leading journals and has ~60,000 career citations.</p> <p>Throughout his career, he has won many prestigious awards including the Australian Physiological Society (AuPS) AK McIntyre Prize (1999), the Kellion Award for the Australian Diabetes Society (2017), The Eureka Scientific Prize (2020), The GSK Award for Research Excellence (2020), The Endocrinology Society UK International Medal (2021) the Kirsten and Freddy Johansen Rigshospitalet International Award, Denmark (2022) and The AuPS Invited Lecture and Medal (2024).</p>	<p>Research Profile</p>
Dr Luke Formosa	<p>Dr Luke Formosa is a Senior Research Fellow in Biochemistry & Molecular Biology, an NHMRC Emerging Leader Fellow, and Laboratory Head at the Monash Biomedical Discovery Institute. He leads research in mitochondrial biology, focusing on the assembly of energy-converting mitochondrial enzymes and protein complexes, the identification of mitochondrial metabolite</p>	<p>Research Profile</p> <p>Lab website</p>

	<p>transporters, and the metabolic changes that arise from mitochondrial dysfunction, particularly in mitochondrial disease.</p> <p>His work aims to uncover the fundamental mechanisms that regulate these cellular processes and determine how they can be leveraged to diagnose and treat mitochondrial disease.</p> <p>Current projects include characterising orphan mitochondrial metabolite transporters, mapping metabolic pathways affected by impaired mitochondrial function, and exploring therapeutic strategies to restore metabolic balance. Dr Formosa's research bridges molecular biology and metabolism, providing insights relevant to a wide range of disorders, including neurodegenerative, cardiometabolic, and metabolic diseases.</p>	
<p>Professor Michael Cowley</p>	<p>Professor Michael Cowley is the Professor of Physiology and Associate Director of Research Commercialisation and Innovation at the Monash Biomedicine Discovery Institute. (School of Biomedical Sciences) He leads the Metabolic Neurophysiology Lab, which aims to uncover the neurohormonal feedback loops that maintain healthy metabolic function and identify how these systems are disrupted in conditions such as obesity and diabetes. His research focuses on mapping the complex interactions between genes, molecules, neurotransmitters, and neurons that regulate blood glucose, feeding behaviour, fat storage, energy expenditure, and cardiovascular function.</p> <p>The lab investigates circulatory and sub-cellular metabolic signals to understand how the body and brain operate in healthy states and pinpoint changes that occur in pathophysiological conditions. Professor Cowley's work has driven the development of novel drugs for metabolic disease and continues to inform therapeutic strategies for improving metabolic health globally.</p>	<p>Research Profile</p>
<p>Professor Zane Andrews</p>	<p>Professor Zane Andrews is the Deputy Head of the Metabolism, Diabetes and Obesity Program at the Monash Biomedicine Discovery Institute leading research into the neural circuits that regulate hunger and its broader influence on behaviour. In addition to driving food intake, hunger also impacts behaviour such as mood, motivation, memory, attention and arousal. Professor Andrews' work aims to define the pathways that sense hunger and mediate these behavioural responses.</p> <p>By understanding these circuits, his research seeks to develop strategies to address overeating, food addiction, and associated psychiatric comorbidities in conditions such as obesity and eating disorders. His work integrates neuroscience, physiology, and behavioural science to uncover mechanisms that link metabolic signals with brain function.</p>	<p>Research Profile</p>

<p>Professor Christoph Hagemeyer</p>	<p>Professor Christoph Hagemeyer is Director of Monash Biomedical Imaging and Head of the NanoBiotechnology Laboratory at the Department of Diabetes, Monash University. His research focuses on nanotechnology-driven drug delivery and molecular imaging for cardiovascular disease, cancer, and diabetes. He is pioneering glucose-responsive nanomaterials and targeted antibody-based therapies to advance treatment of metabolic disorders.</p>	<p>Research Profile</p>
<p>Professor Stuart Roberts</p>	<p>Professor Stuart Roberts is Adjunct Clinical Professor, Gastroenterology in the Department of Medicine and Head of Hepatology, The Alfred Hospital. Prof Roberts is a leading hepatologist and clinical researcher specializing in liver disease, including viral hepatitis, hepatocellular carcinoma, steatotic liver disease, and autoimmune hepatitis. He has extensive experience in clinical trials, having served as Principal Investigator in over 195 sponsored and investigator-initiated trials (Phase I–IV). His work has shaped global standards of care for hepatitis C, MASH m and advanced therapies for chronic liver conditions. He is widely published with over 330 publications with >28,000 citations and H-index of 72.</p>	<p>Research Profile</p>
<p>Associate Professor Adam Rose</p>	<p>Associate Professor Adam Rose is Associate Professor and Head of the Nutrient Metabolism and Signalling Laboratory within the Dept. of Biochemistry and Molecular Biology as part of the Biomedicine Discovery Institute Metabolism, Diabetes and Obesity Program. His research investigates how ingested nutrients coordinate metabolic function and how nutrient signalling pathways interact when nutrient balance is altered. By uncovering these mechanisms, his team aims to identify new therapeutic targets for metabolic diseases such as obesity, diabetes, and cancer.</p>	<p>Research Profile</p>
<p>Dr Raelene Pickering</p>	<p>Dr Raelene Pickering is a Senior Research Fellow in the Department of Diabetes, School of Translational Medicine, Monash University. Dr Raelene Pickering is an experienced molecular and cell biologist specializing in diabetic complications, RAAS signalling, and RNA-based therapies. Her research focuses on understanding the mechanisms of angiotensin II signalling, RAGE (Receptor for Advanced Glycation End Products) pathways, and developing splice-switching oligonucleotides as novel therapeutics for chronic diseases. She also leads projects on RNA therapies for lung disease and diabetic complications.</p>	<p>Research Profile</p>
<p>Dr Zhong-Lin Chai</p>	<p>Dr Chai is Head of the Pathophysiology of Diabetic Complications Laboratory in the Department of Diabetes in the School of Translational Medicine, leading research into the molecular mechanisms of diabetes-induced tissue injury, with a focus on kidney and vascular complications. His team was the first to identify and clone the protein CDA1, which plays a key role in promoting fibrosis and damage in diabetic nephropathy.</p>	<p>Research Profile</p>

	<p>To translate these findings into therapies, Dr Chai developed a prototype peptide inhibitor, CHA-061, which has shown promise in reducing kidney injury in preclinical models. His lab is now working to enhance its potency and develop a small molecule version in collaboration with pharmaceutical and biomedical research partners.</p>	
<p>Professor Melinda Coughlan</p>	<p>Professor Coughlan is Professor (Research) in the Department of Diabetes, School of Translational Medicine, and a biomedical scientist and registered nutrition scientist whose research focuses on the molecular mechanisms driving diabetic complications, particularly kidney disease. Her work examines how dietary factors—such as advanced glycation end-products (AGEs), ultra-processed foods, and gut barrier dysfunction—promote inflammation, oxidative stress, and mitochondrial dysfunction in diabetes.</p> <p>Her laboratory integrates multi-omic profiling, preclinical disease models, and analyses of ex vivo human kidney biospecimens to identify novel therapeutic targets for chronic kidney disease, with a strong emphasis on mitochondrial health and complement pathway activation. Professor Coughlan has held prestigious fellowships, including the MRFF REDI Fellowship with AstraZeneca, and leads projects funded by NHMRC, JDRF, and Diabetes Australia.</p>	<p>Research Profile</p>
<p>Dr Jay Jha</p>	<p>Dr Jay Jha is a leading researcher in diabetes and kidney disease, advancing understanding of the molecular mechanisms that drive cardiorenal syndrome and diabetic complications. His work focuses on identifying novel therapeutic targets and biomarkers to prevent and treat diabetic nephropathy and related cardiovascular conditions. He has pioneered research on pro-oxidant enzyme NADPH oxidases (NOX4 and NOX5) as key drivers of oxidative stress and inflammation in diabetic kidney disease.</p>	<p>Research Profile</p>
<p>Dr Ella Zomer</p>	<p>Dr Ella Zomer is a Senior Research Fellow in the Department of Epidemiology and Preventive Medicine. She is the Diabetes and Cardiovascular Disease Program Lead in the Monash University Health Economics Group and Research Lead of the Australian Diabetes Clinical Quality Registry. Her research focuses on chronic disease, ageing, and health economics, with expertise in epidemiological modelling and cost-effectiveness analysis. She has published extensively on cardiovascular disease, diabetes, frailty, and the economic burden of chronic conditions, contributing to evidence-based policy and clinical practice. Dr Zomer has an h-index of 33 and nearly 4,800 citations, reflecting her impact in public health research. She collaborates widely on national and international projects aimed at improving health outcomes and informing efficient resource allocation.</p>	<p>Research Profile</p>

Dr John Scott	Dr John Scott leads the Dark Kinase Drug Discovery Lab and is an internationally recognized researcher in kinase signalling pathways that regulate energy metabolism. His research is specifically focused on the role of the CAM kinase family of enzymes (CAMKs) in the regulation of cellular metabolism. Dr Scott is Founder and Principal Scientist of Calmodulin Therapeutics, a Monash biopharma spin out developing next-generation therapies that target the CAMKs to treat lipid-dependent cancers, metabolic diseases, and neurodevelopmental disorders.	Research Profile
Professor Maxine Bonham	Professor Maxine Bonham is a Professor in the Department of Nutrition, Dietetics and Food and a registered nutritionist with more than two decades of experience in nutrition science research. She leads research investigating the interactions between diet, metabolic health and circadian rhythms, with a particular focus on how sleep disruption, shift work, and meal timing influence obesity, cardiovascular risk, and chronic disease. Her expertise includes the design and evaluation of nutrition interventions, including randomised controlled trials, that optimise dietary patterns and timing to improve metabolic health. By translating this knowledge into targeted strategies, her program aims to develop practical, evidence-based solutions for high-risk populations.	Research Profile
Associate Professor Karen Alt	Associate Professor Karen Alt is Group Leader of the NanoTheranostics Laboratory in the Diabetes Department at the School of Translational Medicine . Karen is an immunologist by training and molecular imaging specialist whose research focuses on developing targeted imaging and therapeutic agents - known as theranostics - for early disease detection and personalised treatment. Her work integrates antibody engineering, nanotechnology, and advanced chemical modification techniques such as sortase-mediated conjugation and click chemistry to create multifunctional agents capable of both diagnosing and treating disease. Her lab's innovations include radiopharmaceuticals and nanoparticle-based systems designed for precise delivery to diseased tissues while sparing healthy ones, enabling real-time monitoring of treatment responses. These technologies have the potential to transform care for patients with complex metabolic and vascular conditions, as well as cancer and inflammatory diseases.	Research Profile
Associate Professor Chris Moran	Associate Professor Chris Moran of Health Services Research at the School of Public Health and Preventive Medicine , Monash University. Chris is also a geriatrician based at Alfred Health and the Course Coordinator of the Master of Health Management and Master of Health Administration Programs at Monash University. His research aims to improve the health and wellbeing of older adults, with a strong emphasis on healthy ageing and brain health, links between cardiometabolic disease and cognitive decline, dementia and diabetes, implementation science for better clinical care models, and use of epidemiology and neuroimaging in large datasets to study brain ageing.	Research Profile

<p>Professor Denise Wootten</p>	<p>Professor Denise Wootten is an NHMRC Leadership Fellow and Head of Metabolic Receptor Biology Laboratory, Drug Discovery Biology Theme, Monash Institute of Pharmaceutical Sciences, Faculty of Pharmacy and Pharmaceutical Sciences, Monash University.</p> <p>Professor Denise Wootten is an internationally recognized expert in G protein-coupled receptors (GPCRs) - the largest family of receptors in the human genome and a major class of drug targets. Her research focuses on class B GPCRs, which regulate peptide hormones critical for metabolic processes, including diabetes, obesity, and osteoporosis. She leads a multidisciplinary program combining structural biology, computational modelling, biochemistry, and pharmacology to advance drug discovery.</p>	<p>Research Profile</p>
<p>Dr Arpeeta Sharma</p>	<p>Dr Arpeeta Sharma is a Research Fellow in the Department of Diabetes. Her work investigates molecular mechanisms driving vascular and metabolic complications in diabetes using preclinical animal models. Arpeeta is focusing on the development of RNA therapies on targets that reduce inflammation and improve endothelial function in order to prevent cardiovascular and kidney complications in diabetic patients.</p>	<p>Research Profile</p>
<p>Dr Meagan McGrath</p>	<p>Dr Meagan McGrath is a Senior Research Fellow and Group Leader within the Metabolism, Diabetes and Obesity Program at the Monash Biomedicine Discovery Institute, Department of Biochemistry and Molecular Biology. Working within Professor Christina Mitchell's laboratory, she leads the Skeletal Muscle Biology, Autophagy and Lysosome Group. Her group focuses on the molecular pathways that regulate skeletal muscle homeostasis, disease and metabolism, with a strong focus on autophagy and lysosome-based mechanisms. A key focus is also to uncover pathomechanisms underlying inherited muscle disorders such as muscular dystrophies, with the aim of developing novel therapeutic targets for fatal disorders.</p> <p>Dr McGrath has played a pivotal role in discovering FHL1 gene mutations as a cause of skeletal and cardiac muscle disease, solving a decades-long mystery and paving the way for new treatments. A pioneer in the field of autophagic lysosome reformation, she was also the first to identify failure of this process as a previously unknown cause of muscular dystrophy and is advancing towards therapy development. In a holistic approach, her work combines advanced genetic tools, including CRISPR/Cas9, with preclinical models, multiomics, metabolic phenotyping and cutting-edge microscopy to comprehensively define disease mechanisms and translate findings into potential therapies.</p>	<p>Research Profile</p>

<p>Professor Christina Mitchell AO</p>	<p>Professor Christina Mitchell AO was appointed Executive Dean, Faculty of Medicine, Nursing and Health Sciences in 2011 and has overseen unprecedented growth in research and education activity, revenue and impact. She was the first woman to be appointed Dean of Medicine at a Go8 University in Australia, has held a Sir John Monash Distinguished Professorship for over 15 years, and was inducted to the Monash University Honour Roll in 2024.</p> <p>She trained as a physician-scientist specialising in clinical haematology. Her research group has focussed on the molecular drivers of cancer, investigating metabolic pathways regulating phosphoinositide signalling, particularly PI 3-kinase signalling in human cancer. They have been the recipients of several National Health and Medical Research grants and an ARC grant. Her research laboratory comprises five post-doctoral fellows, a research assistant, three PhD students and an honours student.</p> <p>Professor Mitchell is a cell biologist with over 175 publications in leading journals including Cancer Cell, Nature Communications, Journal of Clinical Investigation, Science Advances and many other prestigious journals. She is inductee on the Victorian Honour Roll of Women and recipient of the Lemberg Medal of Excellence in Biochemistry, as well as an Officer of the Order of Australia for distinguished service to medicine, medical education, research, and academic leadership.</p> <p>A Fellow of the Australian Academy of Health and Medical Sciences, Professor Mitchell was also elected a Fellow of the Australian Academy of Science in 2025. She is Council Chair of Monash Partners Academic Health Sciences Centre and is a Director on the board of the newly formed Bayside Health.</p>	<p>Research Profile</p>
<p>Associate Professor Nicole Kellow</p>	<p>Associate Professor Nicole Kellow is a nutrition scientist at the Department of Nutrition, Dietetics and Food, and an Advanced Accredited Practising Dietitian whose research focuses on the role of diet in diabetes, metabolic health, and endocrine conditions.</p> <p>Her work investigates how dietary factors such as advanced glycation end-products and the gut microbiome influence chronic disease risk and reproductive health.</p> <p>Her expertise includes the development and evaluation of targeted nutrition interventions and education strategies to improve clinical outcomes and support evidence-based management of diabetes and related disorders.</p>	<p>Research Profile</p>

<p>Dr Romana Stark</p>	<p>Dr Romana Stark leads a research group at the Monash Biomedical Discovery Institute investigating how the brain controls hunger, food intake, body weight, and blood glucose levels. Her work aims to understand how the brain senses metabolic state and coordinates adaptive responses to maintain energy balance and metabolic health. Dr Stark trained in Nutrition Science and completed her PhD in endocrinology and metabolism at the Medical University of Vienna (Austria), with a research focus on diabetes. During this time, she undertook a research visit to Yale University (USA), where she developed expertise in metabolic phenotyping, in vivo glucose regulation, and metabolomics. She joined Monash University (Australia) in 2012 as a Postdoctoral Fellow in the laboratory of Prof. Zane Andrews and later established her independent research program with support from NHMRC fundings.</p> <p>Her laboratory focuses on three main areas: (1) how specific brain regions detect low blood glucose and initiate protective counterregulatory responses; (2) how neuroendocrine signals in the brain regulate peripheral metabolism; and (3) how sensory systems, particularly the olfactory bulb, influence feeding behaviour and appetite. Using viral circuit approaches, neuronal activity manipulation, and in vivo fibre photometry, her team aims to uncover new brain pathways that contribute to obesity and metabolic disease.</p>	<p>Research Profile</p>
<p>Professor Craig Harrison</p>	<p>Professor Craig Harrison is Professor of the Department of Physiology in the Monash Biomedicine Discovery Institute, where he leads a research program focused on improving female health outcomes through targeted modulation of TGF-β family signalling. Building on fundamental insights into the synthesis and activation of TGF-β proteins, his team has developed a suite of biologics designed to regulate these pathways and created innovative genetic models that exhibit reproductive and metabolic pathologies.</p> <p>His research spans three key areas: designing biologics to fine-tune TGF-β signalling; investigating the molecular mechanisms underlying reproductive disorders; and translating discoveries into strategies that enhance women's health. Professor Harrison's work combines advanced molecular tools with preclinical models to drive therapeutic innovation in reproductive and metabolic medicine.</p>	<p>Research Profile</p>
<p>Dr Rong Xu</p>	<p>Dr Rong Xu is a Research Fellow at Monash University's Department of Diabetes and Victorian Heart Institute (VHI). His work focuses on developing smart glucose-responsive insulin nanoparticles for type 1 diabetes and targeted exosome therapies for cardiovascular disease and stroke. He also advances novel phage libraries and imaging technologies to track therapeutic delivery, aiming to translate nanomedicine into clinical solutions.</p>	<p>Research Profile</p>

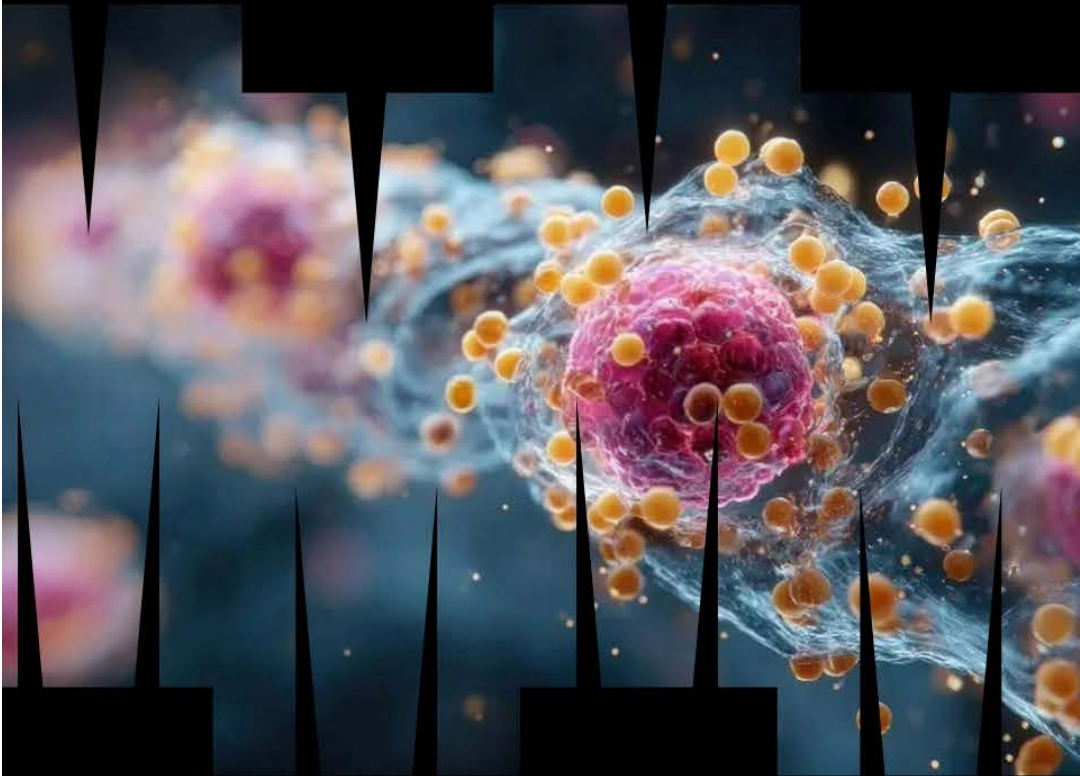
<p>Professor Wendy Brown</p>	<p>Professor Wendy Brown is Head of the Department of Surgery, Co Deputy Head of the School of Translational Medicine and Clinical Director, Australia and New Zealand Bariatric Surgery Registry.</p> <p>Professor Brown is an internationally recognised leader in bariatric and upper gastrointestinal surgery with a research focus on optimally managing the chronic disease of obesity and understanding the effects of weight loss on health, quality of life, and survival.</p> <p>She led the development of the Bi-national Bariatric Surgery Registry, securing funding for its pilot and national rollout. This registry tracks outcomes of bariatric procedures across Australia and New Zealand, providing critical data to inform clinical practice and improve patient care. Professor Brown's work bridges surgical innovation and translational research, shaping evidence-based strategies for obesity management and related conditions.</p>	<p>Research Profile</p>
<p>Professor Karin Jandeleit-Dahm</p>	<p>Professor Jandeleit-Dahm is the Deputy Head of the Department of Diabetes at Monash University School of Translational Medicine and leads the research program Diabetes and Kidney disease and is Professor of Medicine at Monash University.</p> <p>The internationally recognised program investigates the molecular mechanisms driving diabetic complications, particularly in the heart, kidneys, and vasculature. Her pioneering work has identified key roles for oxidative stress and NADPH oxidases (NOX enzymes) in the progression of diabetic nephropathy, atherosclerosis, and retinopathy.</p> <p>Her team employs a translational research approach - from cellular and animal models to clinical trials - to develop novel therapeutic strategies targeting these pathways. She is currently Chief Investigator on multiple NHMRC grants and she has led an international clinical trial testing NOX inhibitors in type 1 diabetic kidney disease, supported by JDRF and ARC.</p>	<p>Research Profile</p>
<p>Professor Mark Cooper (AO)</p>	<p>Professor Mark Cooper AO is Head of the Department of Diabetes in the School of Translational Medicine and an internationally recognised leader in the molecular mechanisms driving diabetes and its major complications, including kidney disease, cardiovascular disease, and blindness.</p> <p>Professor Cooper's pioneering studies have shaped clinical practice worldwide, defining strategies to reduce the burden of diabetic complications and translating discoveries from the laboratory into patient care.</p>	<p>Research Profile</p>

<p>Professor Merlin Thomas</p>	<p>Professor Merlin Thomas is Professor of Medicine (Research) and Program Leader in the Department of Diabetes, School of Translational Medicine. He is an internationally recognised clinician-scientist whose research focuses on the mechanisms driving diabetic complications, particularly diabetic kidney disease.</p> <p>Trained in both nephrology and endocrinology, he combines clinical expertise with cutting-edge molecular science to advance understanding of diabetes-related organ damage and developing new opportunities for their prevention and treatment. He is a Fellow of the Australian Academy of Medicine Science and Founder of the spin-out company, RAGE Biotech.</p> <p>He leads the Biochemistry of Diabetes Complications Laboratory in the Department of Diabetes in the School of Translational Medicine, where his team investigates the molecular pathways underpinning complications affecting the kidneys, heart, and vasculature. His translational research spans basic biochemistry to clinical trials, aiming to develop novel preventive, diagnostic, and therapeutic strategies that improve outcomes for people living with diabetes. He also coordinates the BMedSci honors program at the School of Translational Medicine and supervises many PhD students.</p>	<p>Research Profile</p>
<p>Associate Professor Priya Sumithran</p>	<p>Associate Professor Priya Sumithran is Head of the Obesity and Metabolic Medicine Group in the Department of Surgery, School of Translational Medicine and Clinical Lead for Obesity Medicine at Alfred Health.</p> <p>An endocrinologist and clinician-researcher, her work focuses on reducing the impact of obesity on health and wellbeing through research into the neuroendocrine regulation of appetite, clinical application of obesity therapeutics, and improving access to care. Her group conducts clinical trials on obesity medications, metabolic bariatric surgery, and new models of care.</p>	<p>Research Profile</p>
<p>Dr John Scott</p>	<p>Dr John Scott leads the Dark Kinase Drug Discovery Lab and is an internationally recognized researcher in kinase signalling pathways that regulate energy metabolism. His research is specifically focused on the role of the CAM kinase family of enzymes (CAMKs) in the regulation of cellular metabolism.</p> <p>Dr Scott is Founder and Principal Scientist of Calmodulis Therapeutics, a Monash biopharma spin out developing next-generation therapies that target the CAMKs to treat lipid-dependent cancers, metabolic diseases, and neurodevelopmental disorders.</p>	<p>Research Profile</p>

Dr Christos Tikellis	Dr Christos Tikellis is a Senior Research Fellow in the Department of Diabetes , School of Translational Medicine. Dr Christos Tikellis is a leading researcher in diabetes and cardiovascular complications, with a strong focus on the renin–angiotensin system (RAS) and its role in diabetic nephropathy, cardiovascular disease, and metabolic disorders. His work explores molecular mechanisms underlying diabetic complications and develops novel therapeutic strategies targeting inflammation, fibrosis, and vascular dysfunction.	Research Profile
----------------------	------------------------------------------------------------------------------------------------------------------------------------------------------------------------------------------------------------------------------------------------------------------------------------------------------------------------------------------------------------------------------------------------------------------------------------------------------------------------------------------------------------------------------------------------------	----------------------------------



MONASH
University



WEBSITE

monash.edu/metabolism

EMAIL

mnhs@monash.edu