



Executive Dean, Faculty of Medicine, Nursing and Health Sciences and Vice-President (Health)

Faculty/Division	Faculty of Medicine, Nursing and Health Sciences
Classification	Dean
Employment type	Full-time
Work location	Clayton campus
Date document created or updated	June 2026

Monash University

At [Monash](#), work feels different. There's a sense of belonging, from contributing to something ground-breaking – a place where great things happen. You know you're part of something special and purposeful because, like Monash, your ambitions drive you to make change.

We have a clear purpose to deliver ground-breaking intensive research; a world-class education; a global ecosystem of enterprise – and we activate these to address some of the [challenges](#) of the age, Climate Change, Thriving Communities and Geopolitical Security.

We welcome and value difference and [diversity](#). When you come to work, you can be yourself, be a change-maker and develop your career in exciting ways with curious, energetic, inspiring and committed people and teams driven to make an impact – just like you.

Together with our [commitment to academic freedom](#), you will have access to quality research facilities, infrastructure, world class teaching spaces, and international collaboration opportunities.

We champion an [inclusive workplace culture](#) for our staff regardless of ethnicity or cultural background. We have also worked to improve [gender equality](#) for more than 30 years. Join the pursuit of our purpose to build a better future for ourselves and our communities – [#Changelt](#) with us.

About the Faculty of Medicine, Nursing and Health Sciences

With more than 19,000 students, including 1,500 graduate researchers, and a global alumni community of over 75,000, the Faculty of Medicine, Nursing and Health Sciences (the Faculty) is the largest faculty at Monash University and is driven by a clear and enduring vision to improve the human condition. Defined by its scale and ambition, the Faculty is recognised internationally for transformative education, pioneering research and real-world impact, and is consistently ranked among the world's top 50 medical schools.

As Australia's largest and most comprehensive medicine and health faculty, comprising eleven schools, six institutes and more than twenty-five centres across Victoria, Malaysia and Indonesia, the Faculty is organised into

four sub-faculties—[Biomedical Sciences](#); [Clinical and Molecular Medicine](#); [Health Sciences](#); and [Translational Medicine and Public Health](#), each led by a Sub-Faculty Dean to deliver diverse academic and clinical portfolios.

Covering the full spectrum of health and biomedicine from research to practice, course offerings to undergraduates and postgraduates include; 17 Bachelor degrees, plus several options for double degrees, over 30 Masters degrees, PhD degrees and pathways, 16 Graduate Certificates, 9 Graduate Diplomas, 4 Professional Certificates, and over 90 professional development courses.

The Faculty also encompasses the [Jeffrey Cheah School of Medicine and Health Sciences](#) at Monash University Malaysia. The delivery of medicine and health courses from our Malaysia campus enables world-class education and research with a distinct global perspective. Further, it strengthens the Faculty's international footprint and leverages our Malaysia Campus' regional position to enhance international education, research and partnerships.

Home to more than 1,000 researchers and 120 research groups, the Faculty is recognised as a national leader in clinical trials, contributing to almost 25% of all clinical trials activity in Australia. Its research ecosystem spans discovery science, translational research, clinical trials, population health and large-scale health services research, including more than 550 active projects and 1,100 annual publications within the [School of Public Health and Preventive Medicine](#) alone.

The Faculty is consistently one of Australia's highest-performing faculties in competitive national health and medical research funding, securing more than \$67 million in NHMRC Investigator Grants, one of the largest allocations nationally, and attracting over \$46 million in MRFF investment across 19 projects in 2025.

Through deep affiliations with major urban and rural health service providers, including Monash Health, Bayside Health (Alfred), Cabrini Health, Peninsula Health, Eastern Health, Epworth HealthCare and Latrobe Regional Hospital, the Faculty is embedded within clinical networks that collectively serve 3.5 million people (15% of the Australian population) across metropolitan, regional and rural Victoria. These partnerships provide unparalleled access to diverse patient populations and enable world-class discovery, translational and health services research across the human life-span.

With a proud history of educating more than 64,000 doctors, nurses and allied health professionals, the Faculty is a significant contributor to Victoria's healthcare workforce. Its extensive clinical partnerships ensure students are immersed in real-world clinical environments, delivering industry-aligned learning that produces workplace-ready clinicians, researchers and health leaders equipped to meet the evolving needs of communities locally, nationally and globally.

Faculty of Medicine, Nursing and Health Sciences at a glance:

- **Scale and Reach** — 19,000+ students, including 1,500+ graduate researchers; and 75,000+ alumni across 90 countries.
- **Academic Structure** — 4 Sub-Faculties, 11 Schools, 6 Institutes, 28 Centres.
- **Global Footprint** — Operations across Australia, Malaysia and Indonesia.
- **Research Excellence** — 1,000+ researchers; 120 research groups; 550+ active projects; 1,100+ annual publications.
- **Funding Leadership** — \$67m NHMRC Investigator Grants (2025); \$46m MRFF funding across 19 projects in 2025.
- **Clinical Trials Leadership** — almost 25% of all clinical trials activity in Australia.
- **Clinical Partnerships** — Embedded with major health services serving 3.5+ million people.
- **Workforce Impact** — 64,000+ health professionals educated.

The Faculty's income budget is approximately \$1.1 billion, derived from multiple sources including Commonwealth Government grants, student fees, research revenue, commercial income, and grants and donations.

For more information, [visit our Faculty website](#).

Position purpose

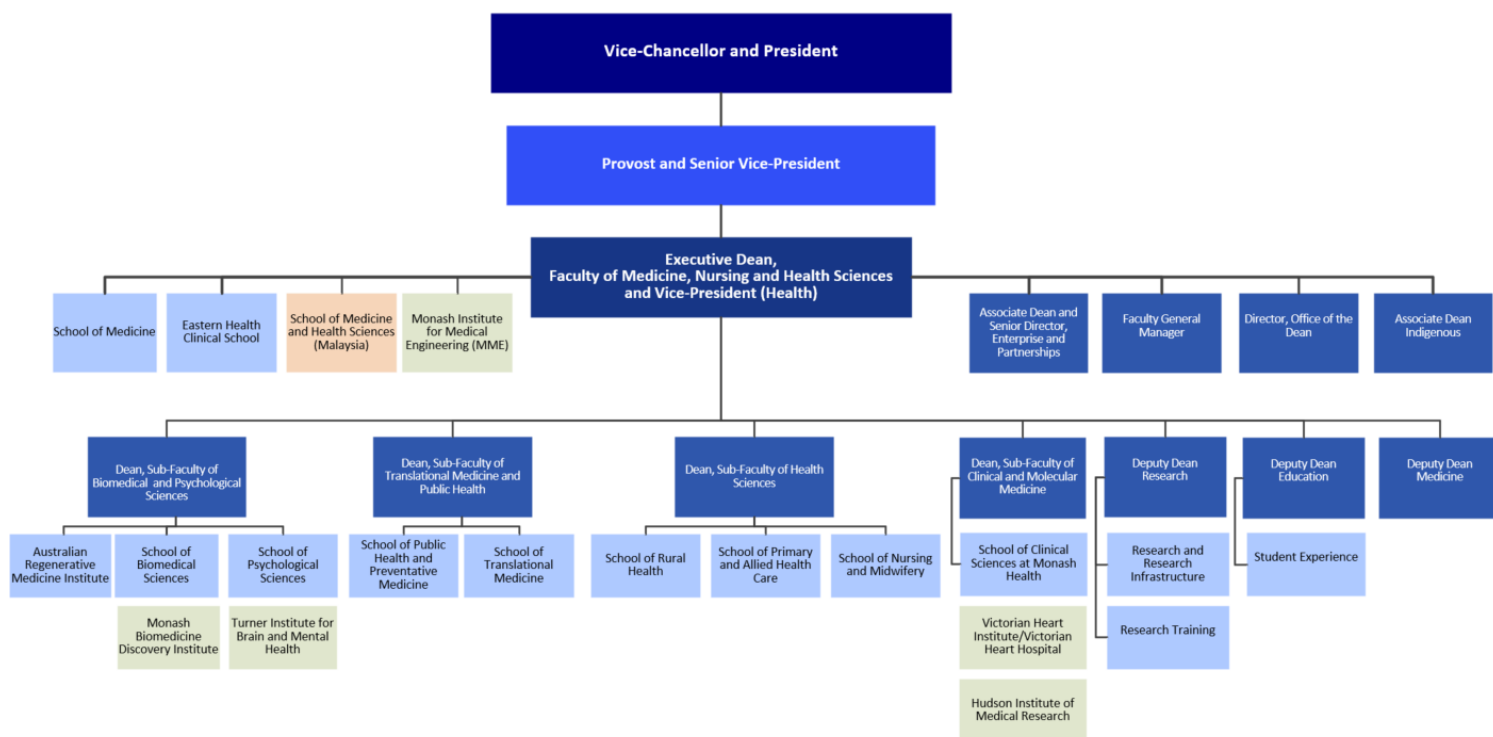
Providing distinguished academic leadership, the Executive Dean, Faculty of Medicine, Nursing and Health Sciences and Vice-President (Health) (Executive Dean and Vice-President) advances the global excellence, reputation and impact of the Faculty's education and research portfolio. Embracing international expansion, emerging frontiers, and technological and digital transformation, the Executive Dean and Vice-President shapes and steers the strategic direction while holding overall accountability for performance and culture, and the delivery of outstanding outcomes in learning, teaching, research and engagement.

The Executive Dean and Vice-President drives influential and impactful engagement with our valued health service partners, and across government, industry, and the philanthropic and community sectors nationally and internationally to amplify the Faculty's profile, diversify income and bolster investment in its education and research endeavours. The role deepens existing partnerships and forges new collaborations that extend the Faculty's international influence and global standing - leveraging the Monash Group's international campus network to expand the Faculty's reach as a global hub for biomedical innovation, translational research and commercialisation.

Committed to a culture of excellence, performance, and collaboration with a focus on diversity, equity, and inclusion, the Executive Dean and Vice-President inspires the Faculty to deliver a distinctly Monash experience. Working collaboratively across faculties and campuses, the Executive Dean and Vice-President champions interdisciplinary approaches and cultivates partnerships that promote a positive and prominent Faculty profile and deliver exceptional outcomes for students.

The Executive Dean and Vice-President is a member of the Vice-Chancellor's Executive Committee (VCEC) and engages collegiately and collaboratively with all members of the University's senior executive team, to contribute to institution-wide strategy and decision-making and ensure alignment where complementary and overlapping priorities exist.

Faculty organisational chart



Key result areas and responsibilities

Faculty Performance

- Set the Faculty's vision and strategic direction, ensuring alignment with the University's strategic plan and translating into strategic and operational objectives, holding full accountability for performance and culture and the operational integrity of an extensive annual budget.
- Lead the ongoing strategic integration and alignment of the Jeffrey Cheah School of Medicine and Health Sciences, expanding the Faculty's footprint across the South-East Asia and Indo-Pacific regions while enhancing its global research and education profile.
- Drive focused and sustainable growth across education, research, industry engagement and enterprise, including course quality, student demand, research income, partnerships and digital delivery.
- Build the platforms for future growth and diversification by developing new markets, initiatives, programs, partnerships and income streams with a commercial mindset to secure the Faculty's financial sustainability.
- Lead a culture of excellence, continuous improvement and service quality across all campuses, enabling effective and sustained change.
- Champion and provide visible leadership of emerging frontiers, including guiding the innovative and ethical integration of Artificial Intelligence (AI) and digital and technological transformation to enhance education and research activities.

Academic Leadership

- Accountable for excellence in teaching, research, student experience, engagement and workplace culture, positioning the Faculty at the forefront nationally and globally.
- Drive high-quality, collaborative and interdisciplinary research, embedding industry engagement and commercial thinking, and evidencing real-world impact.
- Strengthen research pipeline by developing a modernised doctoral education to enhance higher degree students' employability and success.
- Deliver outstanding teaching and learning across all campuses, deliver employable graduates, and build strong cross-campus, cross-faculty and international collaboration while developing capability and consistency across the Faculty.
- Develop and sustain dynamic and effective collaboration with the central portfolios and other faculties.

Student Experience

- Shape and implement the Faculty's student experience strategy, aligned to the University's strategic plan and the education agenda, to ensure rich student experiences and strong student satisfaction outcomes.
- Effectively embed AI and other digital tools into learning and assessments to further advance immersive education practice and pedagogy.
- Instil student success, belonging and employability as core principles in the design and delivery of all educational offerings.
- Strengthen internal and external partnerships, including clinical, industry and professional alliances to ensure leading teaching programs that are industry-aligned.

University Leadership and Governance

- Actively participate as a constructive member of the University's senior leadership forums, contributing to institution-wide strategy and decision-making.
- Lead Faculty-level implementation of University priorities, ensuring compliance, effective governance and agility in a changing environment.

Equity, Diversity and Inclusion

- Champion the University's commitment to equity, diversity and inclusion, ensuring culture, policy and practice deliver measurable and sustainable progress for staff and students in the Faculty.

Partnerships, Reputation and External Engagement

- Build and sustain exceptional and collaborative partnerships with the Chief Executive Officers and executive teams of Victoria's major health services and networks, in particular Monash Health and Bayside Health (Alfred).
- Build and sustain high-impact partnerships with government, health services, and industry locally, nationally and internationally to enhance the Faculty's global profile and influence and leverage potential revenue and commercial opportunities.
- Represent the Faculty with credibility and energy, navigating complex clinical and hospital environments, industry, alumni, government, professional bodies and the broader community to drive healthcare innovation and translational impact.
- Lead large scale and an outward-facing engagement strategy for commercialisation and enterprise focusing on philanthropy, global industry, the biotechnology sector and venture capital to attract funding and new technologies.
- Deepen alumni engagement to build long-term advocacy, connection and support.

People Leadership

- Provide exemplary academic leadership to a large and diverse workforce and be accountable for the overall performance, culture and strategic direction of the Faculty delivering outstanding outcomes in learning and teaching, research and staff and student engagement.
- Shape and uphold a culture of excellence through collaboration, collegiality and continuous improvement, grounded in values, accountability and development.
- Attract, develop and retain diverse and globally competitive talent, through succession planning and leadership growth.

Financial Management

- Lead robust and sustainable financial and workforce planning to support strategic priorities.
- Astutely manage and be accountable for complex Faculty finances; improving revenue and exercising fiscal responsibility and appropriate controls over costs; and adhering to delegations in line with University policy.

Key working relationships

Vice-Chancellor and President

Reports to the Vice-Chancellor and President through the Provost.

Provost and Senior Vice-President

Reports to and receives day to day direction, guidance and leadership from the Provost. Actively engages in Provost-led projects related to academic performance.

Deputy Vice-Chancellors

Collaborates with these senior officers on research and enterprise, education, student experience, Indigenous and international matters.

Chief Operating Officer and Chief Financial Officer

Collaborates on resource requirements including staffing, physical and financial resources.

Heads of International Campuses

Build impactful partnerships with these senior officers and foster excellence in teaching and research matters.

Victorian Health Services

Build strategic and collaborative partnerships with Chief Executives and clinical leaders across the Victorian Health sector, prioritising clinical education, research translation and innovation in medical research and education.

Other senior and executive staff of the University

Interacts with other senior staff co-operatively and positively, in both formal and informal settings, including involvement in cross-faculty and University-wide strategic and operational matters.

Staff of the Faculty

Provides leadership and direction to senior Faculty staff, including the Sub-Faculty Deans, Deputy Deans, Associate Deans, Heads of Schools, Departments, Centres and Institutes, and promotes collaboration across the Faculty at all Monash campuses in Australia and internationally. Provides guidance and mentoring to academic staff in the Faculty as required.

Faculty General Manager

Collaborates with the Faculty General Manager to ensure that the administrative, strategic and operational needs of the Faculty are met.

Students of the Faculty

Provides leadership and advice on educational and disciplinary matters at all Monash campuses in Australia and internationally.

Academic Board and other University committees

Participates in or chairs (as appropriate) committees/boards at the Faculty and University levels.

Other Faculties within the University

Represents the Faculty and promotes opportunities for interdisciplinary activities and other inter-faculty collaborations.

External community and stakeholders

Acts as an interface between the Faculty and the external community generally, providing advice and information, and seeking opportunities for development of the Faculty. Develops effective networks with funding agencies, government departments, accreditation agencies, professional bodies, university representative groups, alumni, philanthropic and business communities.

Senior staff of other institutions

Liaises with leaders in professional networks; provides and receives advice; exchanges information. Develops effective connections with senior staff in other higher education institutions and policy networks.

Key selection criteria

Qualifications

1. Hold a PhD in a relevant discipline, together with a distinguished record of research excellence, impact and scholarship; has a global reputation for leadership of the highest standing.

Skills knowledge and experience

2. Dynamic and proven senior academic leader with a successful track record of leading a large, complex faculty, school, or major portfolio within an international, research-intensive university of global reputation.
3. Deep and comprehensive knowledge and appreciation of the local and global education, clinical and research

landscape.

4. Established international profile underpinned by well-developed, active, and influential networks and partnerships across leading universities and healthcare systems worldwide.
5. Respected academic leader, demonstrating an unwavering commitment to excellence in research, teaching and academic governance.
6. An exemplary leader and enabler of others' success, possessing outstanding interpersonal skills and a clear commitment to a safe working environment, staff development, and improving social justice, equity and diversity.
7. Visionary, change leader and champion of emerging frontiers and technology, able to foster creativity and innovation and implement transformational and sustainable change in complex environments.
8. Financially and operationally astute, with successful management of large and complex budgets and an understanding of the strategic role of marketing, student recruitment, and other non-academic functions.
9. Strategic and collegiate executive who advocates actively for the Faculty while advancing whole-of-university priorities; such as in the area of student recruitment and retention.
10. Globally minded and geopolitically aware, with a deep understanding of international contexts, regional dynamics and the opportunities and risks shaping global higher education and health.
11. Exceptional communicator, partner and influencer, with the capability to build trusted relationships, engage diverse stakeholders and translate vision into actionable objectives across Australian and international campuses.
12. Superior capacity to develop and sustain high-impact partnerships, with the professional credibility to navigate complex clinical negotiations and hospital politics.
13. Astute external engagement, commercialisation, enterprise, and strategic investment capability with proven results in attracting funding, diversifying revenue and securing a sustainable financial future.
14. Understanding of, and exercising superb judgement within, the complex regulatory and professional accreditation environments of the higher education and health sectors.

Other job-related information

The position is located at the Clayton campus, Melbourne. Travel to other campuses of the University will be required from time to time, as well as international travel. The position is subject to a satisfactory Police Record Check, Finance Check and Working with Children Check.

Governance

Monash University expects staff to appropriately balance risk and reward in a manner that is sustainable to its long-term future, contribute to a culture of honesty and integrity, and provide an environment that is safe, secure and inclusive. Ensure you are aware of and adhere to University policies relevant to the duties undertaken and the values of the University. This is a standard that the University sees as the benchmark for all of its activities in Australia and internationally.