



**SUB-FACULTY OF
CLINICAL AND MOLECULAR MEDICINE**

Open Day Information Session





MONASH
CLINICAL AND
MOLECULAR MEDICINE

MONASH UNIVERSITY recognises that its Australian campuses are located on the unceded lands of the people of the Kulin nations, and pays its respects to their Elders, past and present.



**SUB-FACULTY OF
CLINICAL AND MOLECULAR MEDICINE**
**Open Day Information
Session**

19 AUGUST 2025

Professor Eric Morand, Dean

PROFESSOR ERIC MORAND, DEAN
9th AUGUST 2024

We are the clinical node of the Monash Technology Precinct

900m from here!

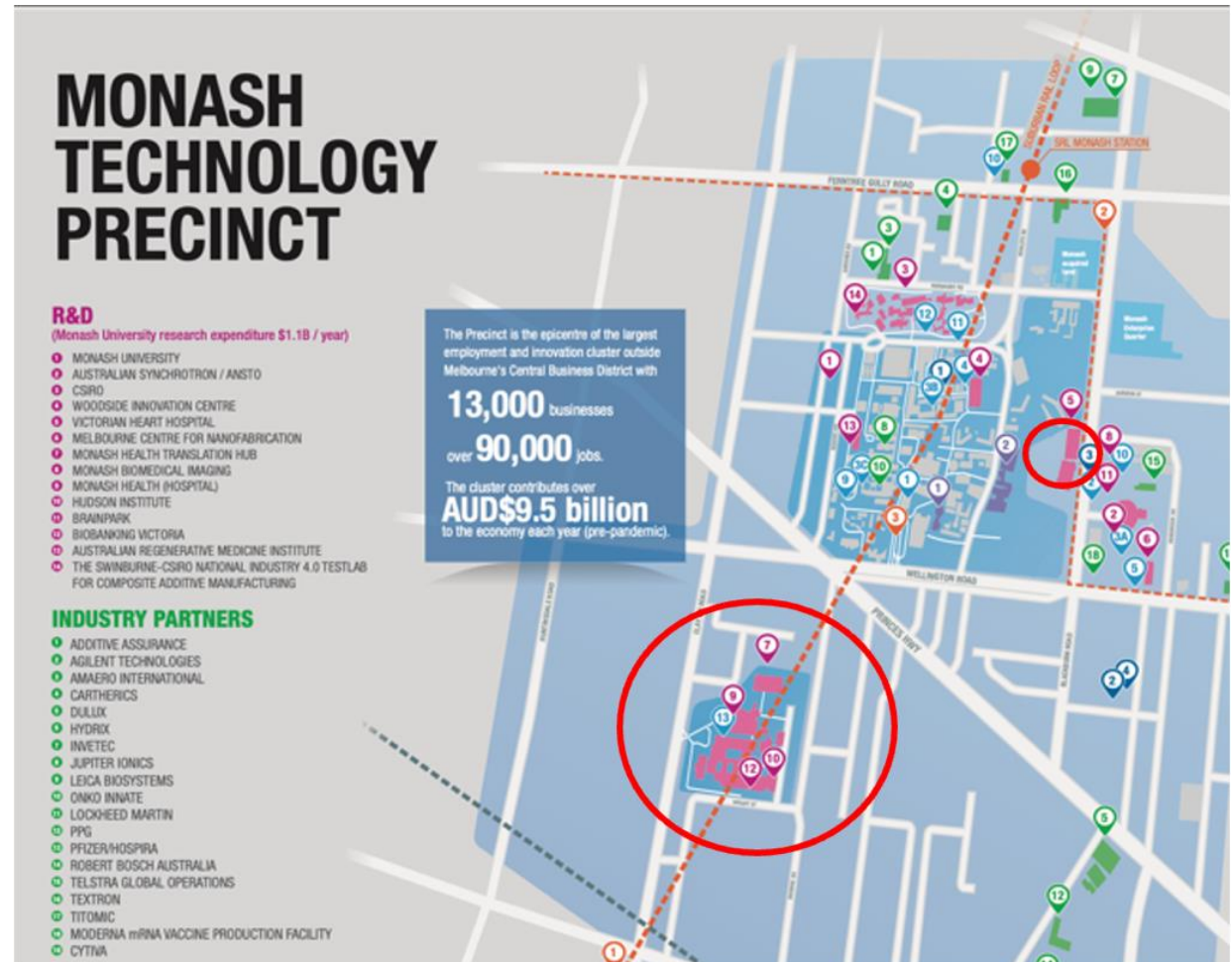
2025 Topline data

~\$200M total revenue

~\$100M research revenue

100 research groups

280 PhD students



MONASH CLINICAL AND MOLECULAR MEDICINE

School of Clinical Sciences at Monash Health



Prof Peter Ebeling AO
Australia's #1
Endocrinology researcher
IOF President's Award 2024



MONASH CLINICAL AND MOLECULAR MEDICINE

Victorian Heart Institute



WOMEN'S
HEART HEALTH



UNDER-SERVED
POPULATIONS



LIVING
WELL



PERSONALISED
MEDICINE



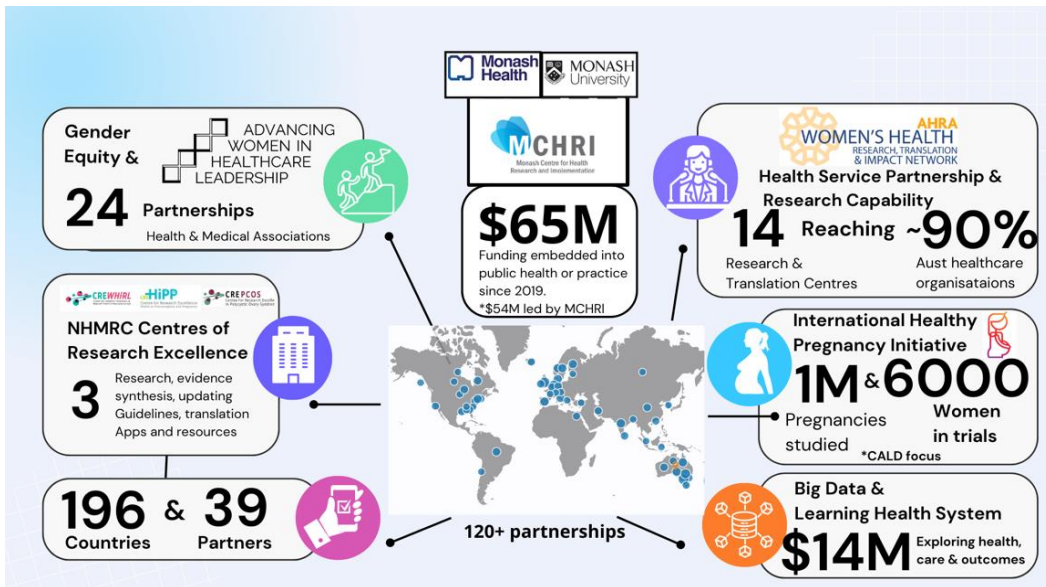
NEW
TECHNOLOGIES

Prof Steve Nicholls
Highly Cited Researcher 2023



MONASH CLINICAL AND MOLECULAR MEDICINE

Monash Centre for Health Research Implementation



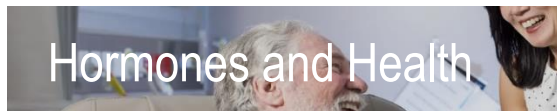
Prof Helena Teede
AM
World #1 PCOS
researcher



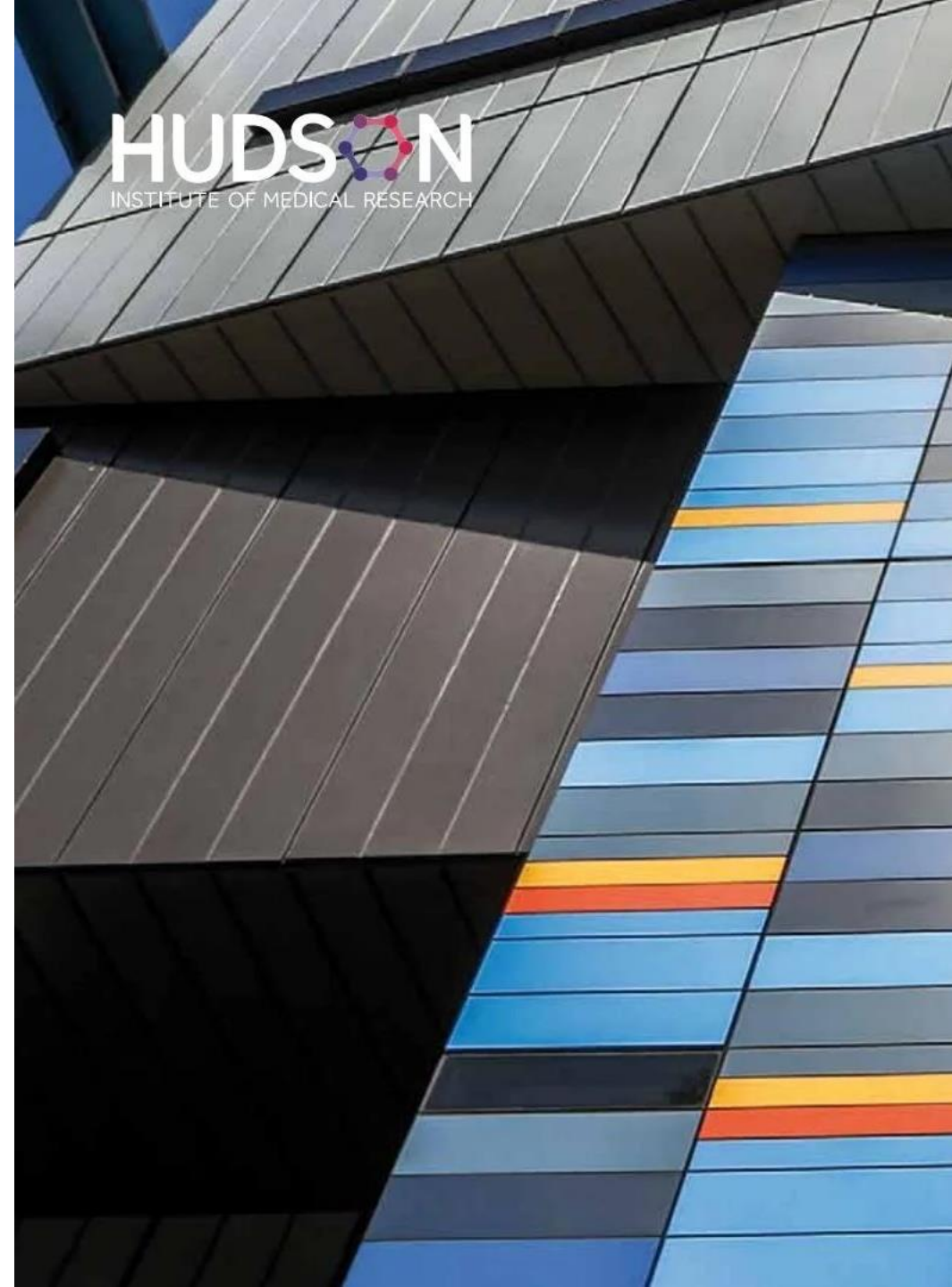
MONASH CLINICAL AND MOLECULAR MEDICINE

Hudson Institute of Medical Research

- University Partner
- Australia's 4th largest Research Institute



Prof Elizabeth Hartland AM
President, AAMRI



What is our USP?

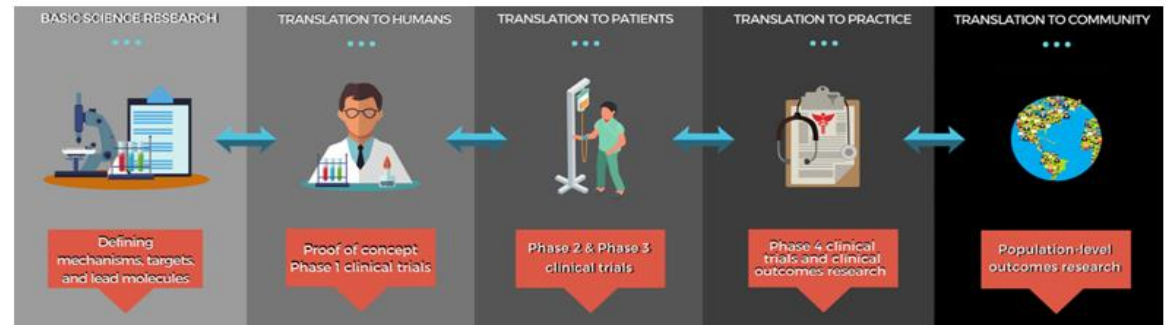
1. We are at Australia's biggest health service, on Monash's doorstep

2. We do health across the lifespan

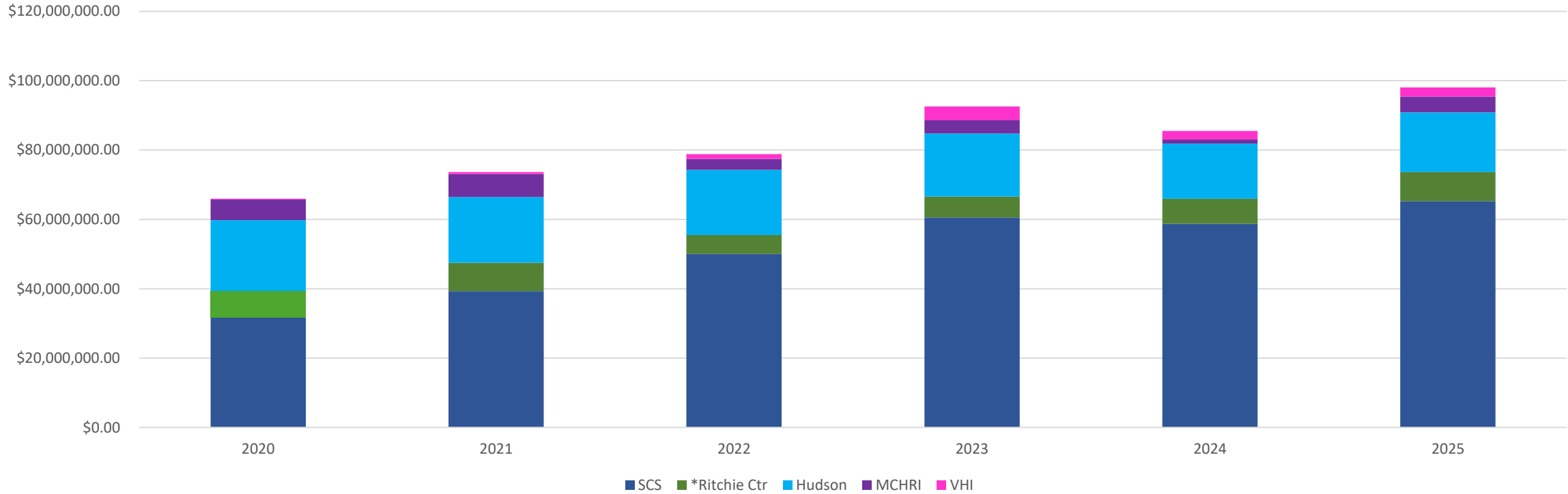
- Monash's home of Women and Children
- Every adult medical speciality – at scale

3. Our research crosses the entire continuum

- Discovery
- Translation
- Clinical research and clinical trials
- Health services research
- Implementation science



RESEARCH INCOME 2020-25 \$494.5M



	2020	2021	2022	2023	2024	2025	TOTAL
SCS	\$31,654,995.80	\$39,272,796.75	\$50,006,454.99	\$60,569,302.73	\$58,733,735.42	\$65,248,991.00	\$305,486,276.69
*Ritchie Ctr	\$7,683,469.50	\$8,199,536.66	\$5,476,570.89	\$6,023,673.39	\$7,239,143.74	\$8,373,890.00	\$42,996,284.18
Hudson	\$20,456,995.16	\$19,006,768.86	\$18,798,555.74	\$18,153,739.32	\$15,882,786.41	\$17,234,352.00	\$109,533,197.49
MCHRI	\$5,925,083.60	\$6,603,421.42	\$3,127,843.93	\$3,840,730.88	\$1,209,925.10	\$4,512,281.00	\$25,219,285.93
VHI	\$224,951.01	\$558,677.07	\$1,412,895.69	\$4,007,964.32	\$2,411,554.85	\$2,693,684.00	\$11,309,726.94
Grand Total	\$65,945,495.06	\$73,641,200.77	\$78,822,321.24	\$92,595,410.63	\$85,477,145.52	\$98,063,198.00	\$494,544,771.22



THANK YOU

• monash.edu/medicine/sub-faculty-of-clinical-and-molecular-medicine

Professor Judy Bauer

Acting Head

School of Clinical Sciences at Monash
Health

School of Clinical Sciences at Monash Health Open Day - Information Session



Professor Judy Bauer, Acting Head of School of Clinical Sciences at Monash Health
19 August 2025

SCS based at Monash Health Precinct



Monash Medical Centre

Monash Children's Hospital

Monash University

Translational Research Facility

Hudson Institute

Monash Health Translation Precinct

Vibrant hub of teaching and translational research in collaboration with Monash Health, Victoria's largest hospital network.



Diverse range of specialities and are at the forefront of medical, clinical/translational research and education.

THE SCHOOL OF CLINICAL SCIENCES

7

ACADEMIC
DEPARTMENTS

4

MONASH UNIVERSITY
RESEARCH CENTRES

3

ACADEMIC
DISCIPLINES FOUND
ONLY AT SCS

- OBSTETRICS & GYNAECOLOGY
 - PAEDIATRICS
 - NUTRITION & DIETETICS
-

SCHOOL OF CLINICAL SCIENCES AT A GLANCE



890+

PUBLICATIONS
PER YEAR



1000+

RESEARCHERS IN
EVERY MEDICAL
DISCIPLINE



100+

RESEARCH
GROUPS



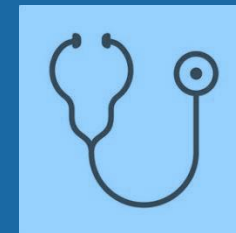
>260

HDR STUDENTS



\$70M

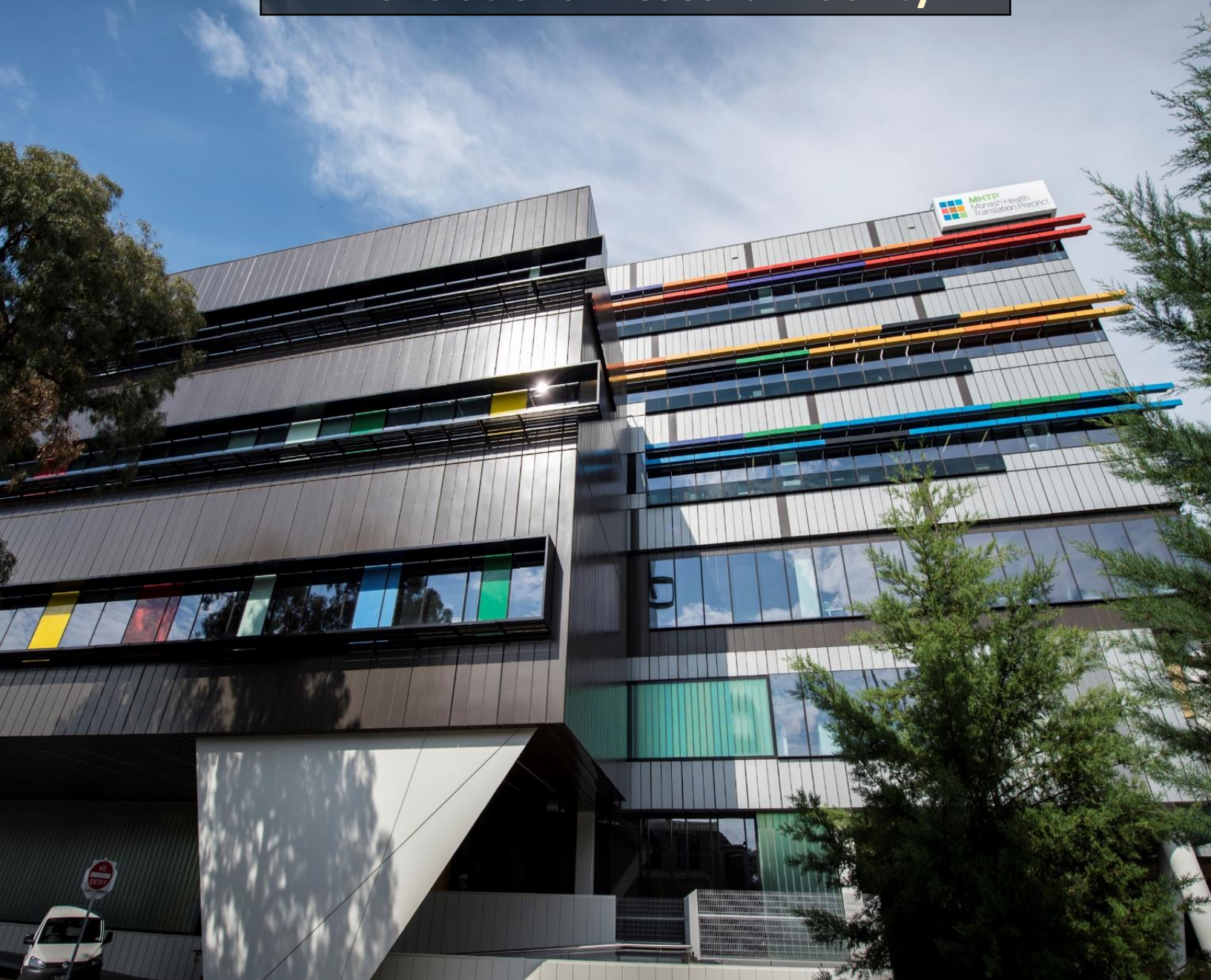
RESEARCH
INCOME
ANUALLY



50+

PHYSICIAN
SCIENTISTS

Translational Research Facility



State of the art platforms

- Clinical trials centre and human imaging platform embedded in research platforms and research centres

Clinicians and basic scientists co-located

Unlimited scope of medical and scientific domains



Leading SCS Research Centres/Groups

- **Centre for Inflammatory Diseases**
 - Rheumatology/Lupus Group
 - Neuro-inflammation Research Group
 - Leukocyte Trafficking Group
 - Regulatory T-cell Therapies Research Group
- **Stroke & Ageing Research (STAR)**
- **Behavioural Neuroscience Lab**
- **Blood Cancer Therapeutics laboratory**
- **Bone & Muscle Health Research Group**
- **The Ritchie Centre (with Hudson Institute)**
- **Nutrition & Dietetics**

CURRENT EDUCATION IN SCS

Bachelor of Nutrition Science

Master of Nutrition & Dietetics

Graduate Diploma of Reproductive Science

Master of Clinical Embryology

Master of Wound Care

GC and Master of Clinical Simulation

GC and Master of Health Professions Education

Teaching into medical program

Short courses – NDF and O&G and Paeds sim centre

Short courses – Monash Health/Monash University collaboration

Single units taught into other courses

Single units as electives

Government funded courses:

- **National Chronic Wound Care Training (A\$1,562,531.00)**
- **Higher Education Microcred Scheme nutrition/mental health/wound care (A\$447,450.00)**

895 EFTSL

Approx 1400 students (excl medicine)

\$69m revenue

\$2m government tenders

State of the Art Research Platforms for every line of inquiry

- **Bioinformatics**
- **Cell Therapies**
- **Flow Cytometry**
- **Functional Genomics**
- **Histology**
- **Mass Spectrometry**
- **Medical Genomics**
- **Micro Imaging**
- **Monash Biobank**



A huge variety of BMedSc(Hons) projects



Seiyon Sivakumar, 2024

Coronary inflammation in patients with and without standard modifiable cardiovascular risk factors



Aloysius Lau, 2024

Validation of the Fresh Experiences Scale: Assessing the experience of new perspectives under psychedelics



Georgia Lyras Musgrave, 2024

Clinical Assessment and Management of Decreased Fetal Movements



Shambhavi Srivastava, 2024

Application and Implementation of Robotic Surgical Systems in Paediatrics



Lily Davies, 2024

What is the impact of location on those with high grade gliomas?

PRECISION MEDICINE

PRECISION HEALTH: YOUR HEALTH, YOUR WAY

RESEARCH SCOPE

Disease Prevention
Early Detection
Targeted Therapy
Genetic Syndromes

RESOURCES

Research Cohorts
(300,000 participants)
Data & Biological Material



THEMES

Genomics
Molecular Pathology
Molecular Epidemiology
Epigenomics
Proteomics

TRANSLATION

Change Practice
Change Policy
Improve Diagnostics
Real Impact

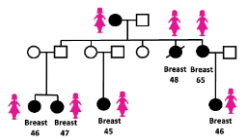


Global Collaborations

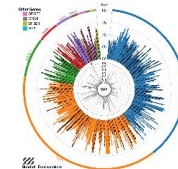


FOR STUDENTS

Contribute to cutting-edge research shaping the future of healthcare.
Gain hands-on experience in genomics, epigenetics, epidemiology, proteomics, and bioinformatics

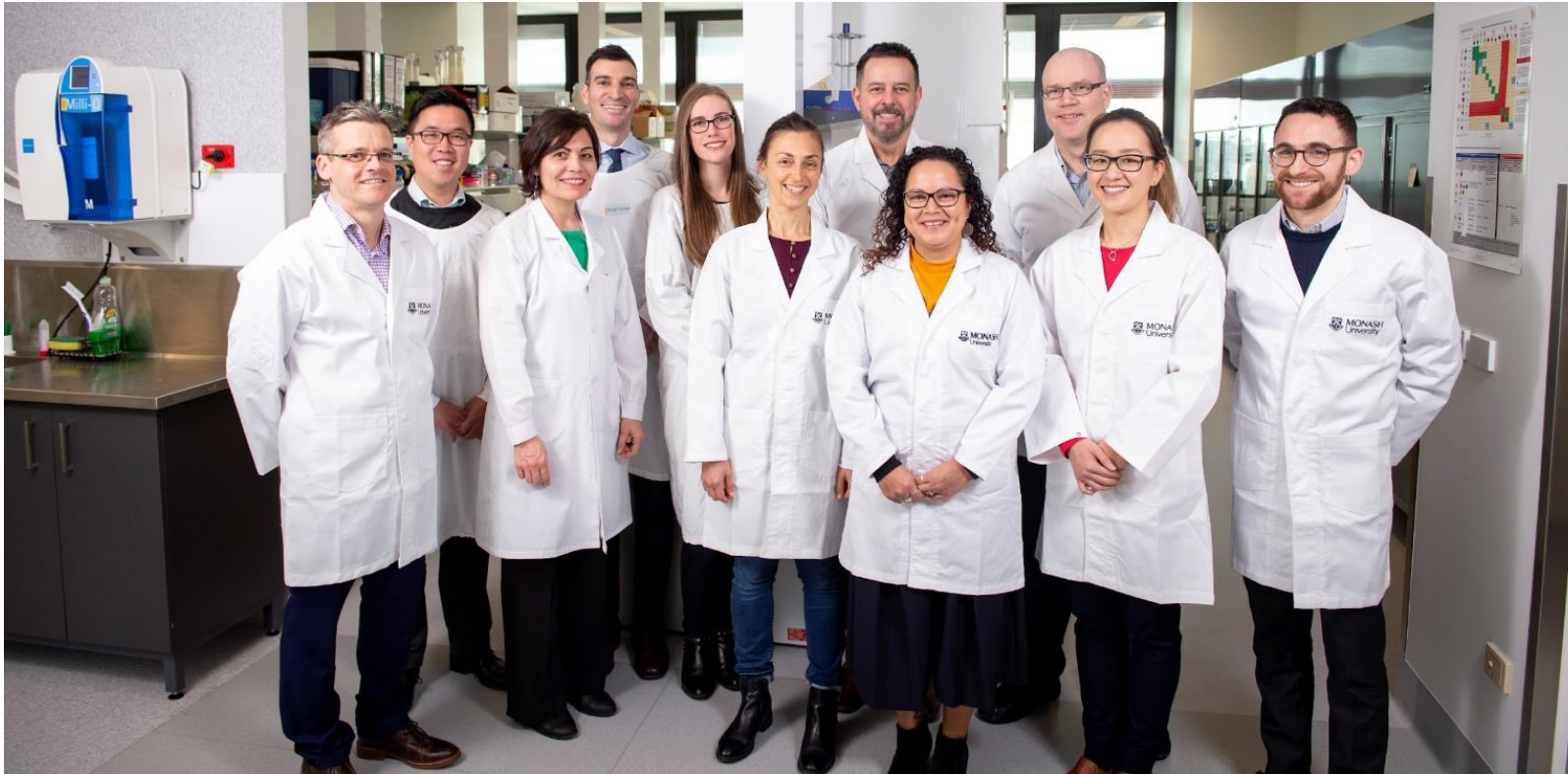


Honours, Masters, and PhD projects are available



What have we got that's special?

Clinician-scientist collaboration as lived experience



Typical SCS research team of scientists and clinicians, led by haematologist, Professor Jake Shortt



Thank you
<https://www.monash.edu/medicine/scs>



Dr Maree Bilandzic
representing
Hudson Institute of Medical Research

Student Open day

2025

Hudson Institute is 10 years old

1960

Prince Henry's Hospital
Medical Research Centre
established on St Kilda
Road, Melbourne

1987

Queen Victoria Hospital and
Prince Henry's Hospital are
relocated to the new
Monash Medical Centre,
Clayton

2014

Hudson Institute of Medical Research
is formed through the merger of Prince
Henry's Institute and Monash Institute
of Medical Research

1978

Monash University's Centre
for Early Human
Development is established
at Queen Victoria Hospital,
Lonsdale Street, Melbourne

In 2024

> 440
STAFF

43
RESEARCH GROUP HEADS

> 250
RESEARCH PUBLICATIONS

Our Research Themes

Our research programs deliver in three broad areas of medical need:



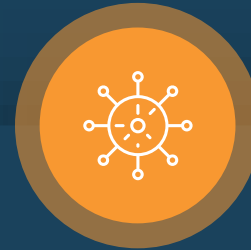
Women's and Newborn Health

We are undertaking innovative research to inform better healthcare and outcomes for high-risk babies and to address the unmet medical need of health conditions affecting women.



Cancer

We employ cutting-edge technologies, including artificial intelligence, to pioneer new methods for diagnosing and treating adult cancers and childhood malignancies.



Inflammation

We are changing the understanding and treatment of major inflammatory and infectious diseases by uncovering the complex networks that control dangerous and chronic inflammation.

Hudson Institute Student Society (HISS)

HISS organises regular social events, competitions and conferences including

- Hudson Student Retreat
- 3 minute thesis competition
- Christmas in July
- Dumplings nights
- Trivia and movie nights.

Students at a glance



153
STUDENTS



39
POSTGRADUATE AND
HONOURS COMPLETED

Our Precinct

Hudson Institute is located within a major scientific and medical innovation hub in Melbourne's south-east corridor, in Clayton, Victoria.

The Monash Medical Precinct is a focal point for biomedical research translation and healthcare, with founding partners, Hudson Institute, Monash Health, including the Monash Children's Hospital, and Monash University.

HUDSON
INSTITUTE OF MEDICAL RESEARCH

Monash
Health

MONASH
University

Monash
Children's
Hospital



Dr Ben Chen
representing
Victorian Heart Institute

Research degrees in the Victorian Heart Institute

SF-CaMM Honors 2025

Ben Chen

Heart Foundation Future Leader Fellow

Baker Heart and Diabetes Fellow

Acknowledgement of Country

Victorian Heart Hospital respectfully acknowledges the Bunurong/ Boonwurrung and Wurundjeri Woi-wurrung peoples, the Traditional Custodians and Owners of the lands where our healthcare facilities are located and programs operate.

We pay our respects to their culture and their Elders past, present and future.

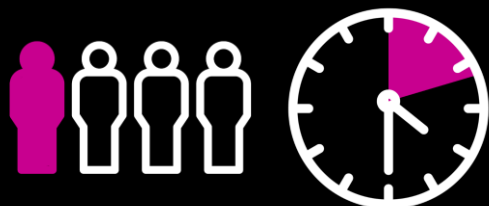


This building stands on the traditional country of the Wurundjeri People of the Kulin Nation.

This plaque marks our recognition and respect for their cultural heritage, beliefs and relationship with the land.

We acknowledge that they are of continuing importance to the Wurundjeri people living today.

TOO MANY AUSTRALIANS DIE, OR ARE DISABLED UNNECESSARILY, BY CARDIOVASCULAR DISEASE.



Cause of 1 in 4 of all deaths.
Every 12 minutes, one
Australian dies of
cardiovascular disease.
That's four people during
this presentation.



Costs our economy more
than \$15 billion annually –
one of Australia's largest
health problems despite
constant improvements.



Disproportionally burdens
Australia's First Nation's
Peoples, those below the
poverty line, and those living
in rural and remote regions.

THE VHI AT A GLANCE



**Institute launched
November 2020**



600+ members
(including a Monash
Malaysia cohort)



**5 FTE Operations + approx.
7 FTE clinical trials**
(and rapidly growing)



**Regular research
activities underway**
(affinity groups, annual symposium)



Education portfolio



Strategic plan



**Moved into the Victorian Heart
Hospital in February 2023**

A HOME BASE IN THE VICTORIAN HEART HOSPITAL

- Australia's leading cardiovascular research institute
- 220 scientists by 2026 and connected with a large community of members across Monash University

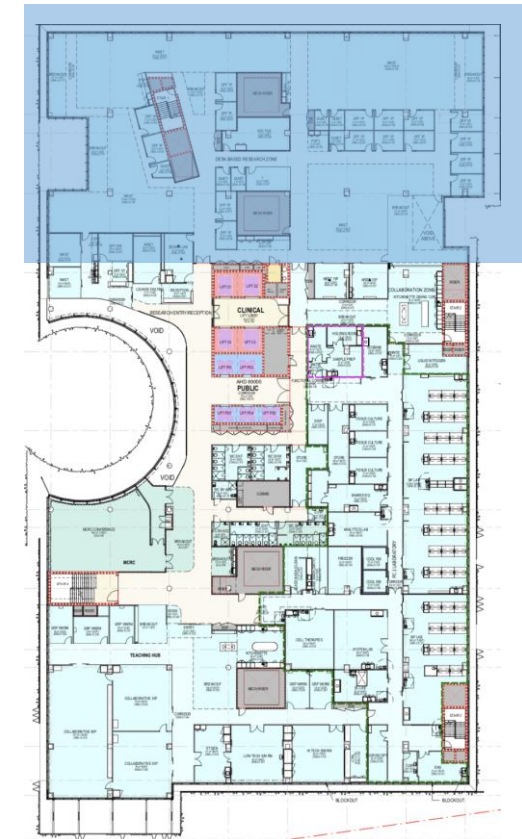
RESEARCH

- Biomedical laboratories
- Chemical engineering laboratories
- Specimen Laboratory
- Potential for future class C and B cell therapies clean rooms
- Systems Laboratory to integrate interdisciplinary workflows
- Dedicated clinical trials facility

TEACHING AND EDUCATION

- Dedicated simulation suites for teaching and learning
- Lecture theatre and break out spaces

WORKSTATIONS, OFFICES + COMMON AREAS



RESEARCH LABORATORIES

TEACHING + EDUCATION

External View
Approach from Monash Uni



MRI
Ground Floor



Cath Lab
Level 4



- Research facilities in house



Brand new lab!



Cell culture



Cryo-storage and biobanking



Pre-clinical surgical suite



mRNA expression



Immunoblotting



Flow cytometry

Victorian Heart Hospital and Institute showcase talent at Australia's leading heart conference

31 July 2024



Early career and student support network

- VHI Future Research Leaders Alliance
 - Social events
 - Career development events

Career development / education

- VHH Grand Rounds
- VHI Symposium
- VHI seminar series
- Combined group lab meetings

External opportunities

- Conference presentations
- Poster sessions
- Student networks (on-campus)
- Webinars
- Collaboration / Grand Challenge Workshops

“Research is ultimately about finding new ways to treat our patients better. It’s about impact and inviting the community to participate in research because the research isn’t about us – it is fundamentally about our community.”

– Professor Stephen Nicholls



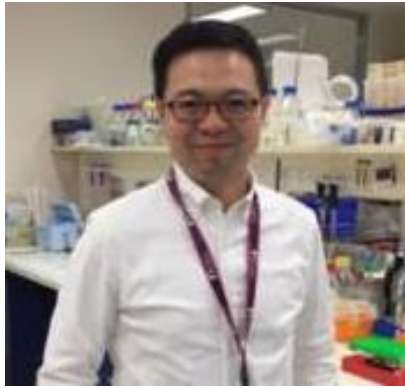
1. Personalised Medicine in Cardiovascular Disease (**systematic reviews**)
- 2, **Atherogenic Macrophage** responses to necroptotic cells
3. Vascular **Smooth Muscle Cell Plasticity**, inflammation and necroptosis in Atherosclerosis
4. The clock is ticking: A role for **RIPK1** and/or **MLKL** in altering the circadian clock in obesity?
5. **Trained Immunity** in Atherosclerosis – A role for RIPK1?

Denuja.Karunakaran@monash.edu



Assessing how a long-term **low-fibre diet** impacts the immune system and/or other organ function.

Joanne.O'Donnell@monash.edu



Ben.chen2@monash.edu

- Engineering Local **Haemodynamic Disturbances** with 3D Printing to Investigate **Cardiovascular–Kidney–Metabolic** syndrome
- From Gut to Arteries: How **Akkermansia** and **TMAO** Influence Atherosclerosis and Heart Attack



Kristen.bubb@monash.edu

Investigating the role of **apoC3** deficiency in atherosclerotic plaque stability

- Mouse surgery model / tissue dissection
- Histology/ immunohistochemistry
- Protein and RNA analysis
- Plasma lipid and inflammation measurements
- Critical analysis of literature
- Analytical interpretation of data
- Teamwork and autonomy in lab

Dr Sarah Lang
representing
Monash Centre for Health and
Research Implementation

Monash Centre for Health Research and Implementation (MCHRI)



A partnership between:



About us ▾

Guidelines & Resources ▾

Evidence & Translation ▾

Platforms for Impact ▾



Better care, better equity, better health

Monash Centre for Health Research and Implementation

Learn about our work and resources for health impact. For details on our research and education visit our [Monash University website](#).

Dr Sarah Lang

Research Fellow / Dietitian
sarah.lang1@monash.edu



Research Programs



Cross Cutting Platforms

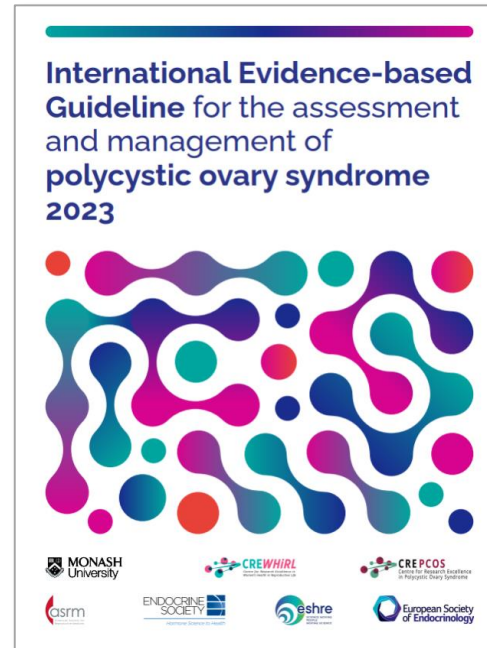
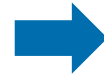


Education



IMPROVING WOMEN'S HEALTH THROUGH IMPLEMENTATION RESEARCH

Complex & neglected women's health conditions



- **PCOS Guideline**
1M+ views of guidelines, publications & resources
- **Ask PCOS App**
95K+ users in 195 countries
- **Ask Early Menopause App**
12K+ users
- **Ask Fertility App**

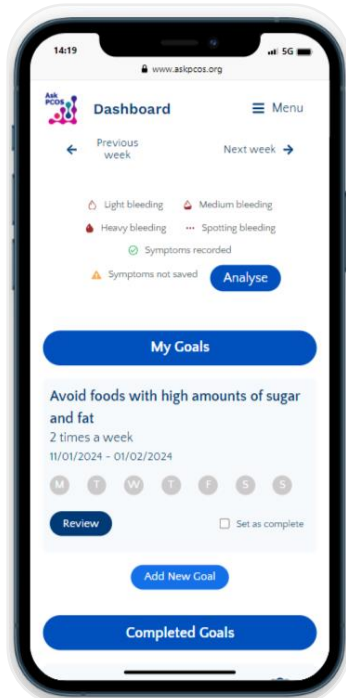
Ask PCOS

Ask Early Menopause

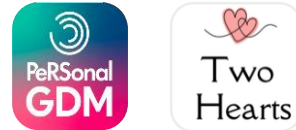
Ask Fertility

OUR SCALABLE DIGITAL HEALTH ECOSYSTEM

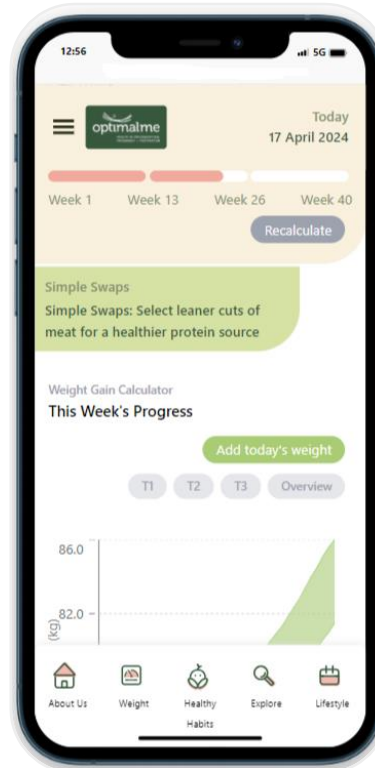
Consumer/ Self Management Apps



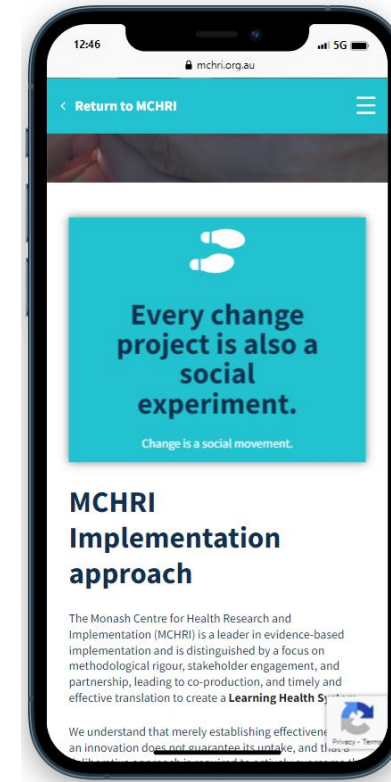
Risk Calculators



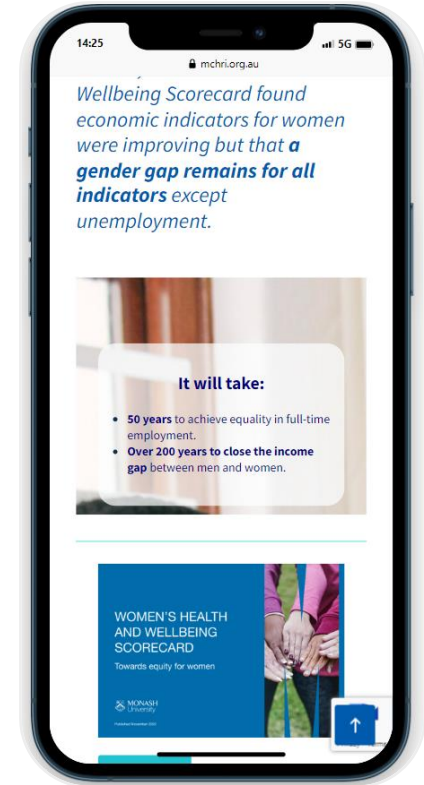
Lifestyle Interventions



Change Implementation in Health and Advancing Women in Leadership Toolkits



Interactive Women's Health & Wellbeing Scorecard



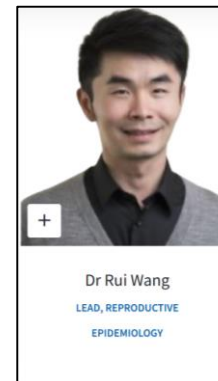
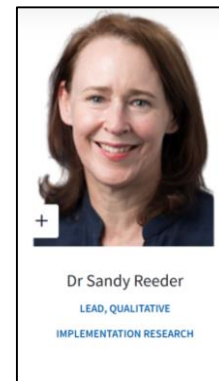
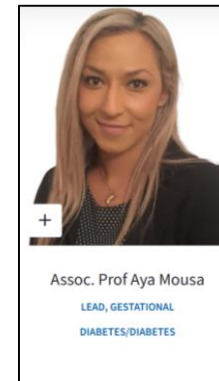
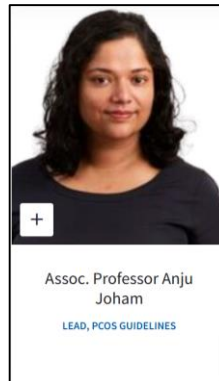
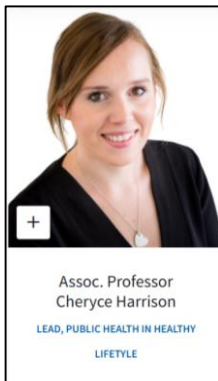
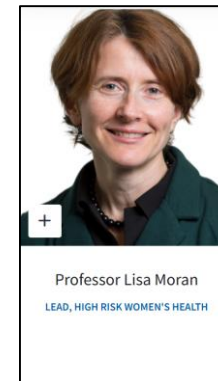
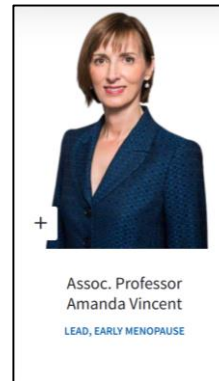
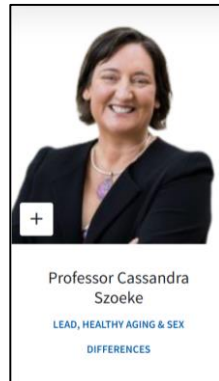
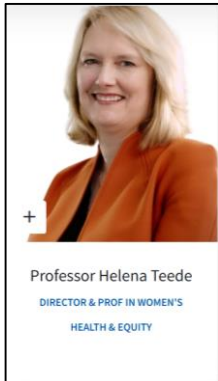
LOCATION AND FACILITIES

Located in the **Monash Health Translation Precinct** at Monash Medical Centre in Clayton

Access to Monash University and Monash Health Facilities

10-minute walk to Clayton Station





Website: www.mchri.org.au

Email: info.mchri@monash.edu

Projects: <https://supervisorconnect.med.monash.edu/research-projects>

Filter by Monash Centre for Health Research and Implementation (MCHRI)



Associate Professor Simon Chu
Associate Professor Rimma Goldberg

Honours Application

Honours Application



Associate Professor Simon Chu

Co-convenor BMS Honours at Hudson/SCS
Research Group Head
Hormone Cancer Therapeutics
Simon.chu@hudson.org.au



Associate Professor Paul King

Co-convenor BMS Honours at SCS/Hudson
Research Group Head
Inflammatory Respiratory Disease Research
Paul.king@monash.edu



Associate Professor Rimma Goldberg

Director BMedSci(Hons) at SCS/Hudson
Research Fellow
Cell Based and Regenerative Therapies for
Inflammatory Bowel Disease
rimma.goldberg@monash.edu



SCS/Hudson Institute Bachelor of Biomedical Science Honours Degree

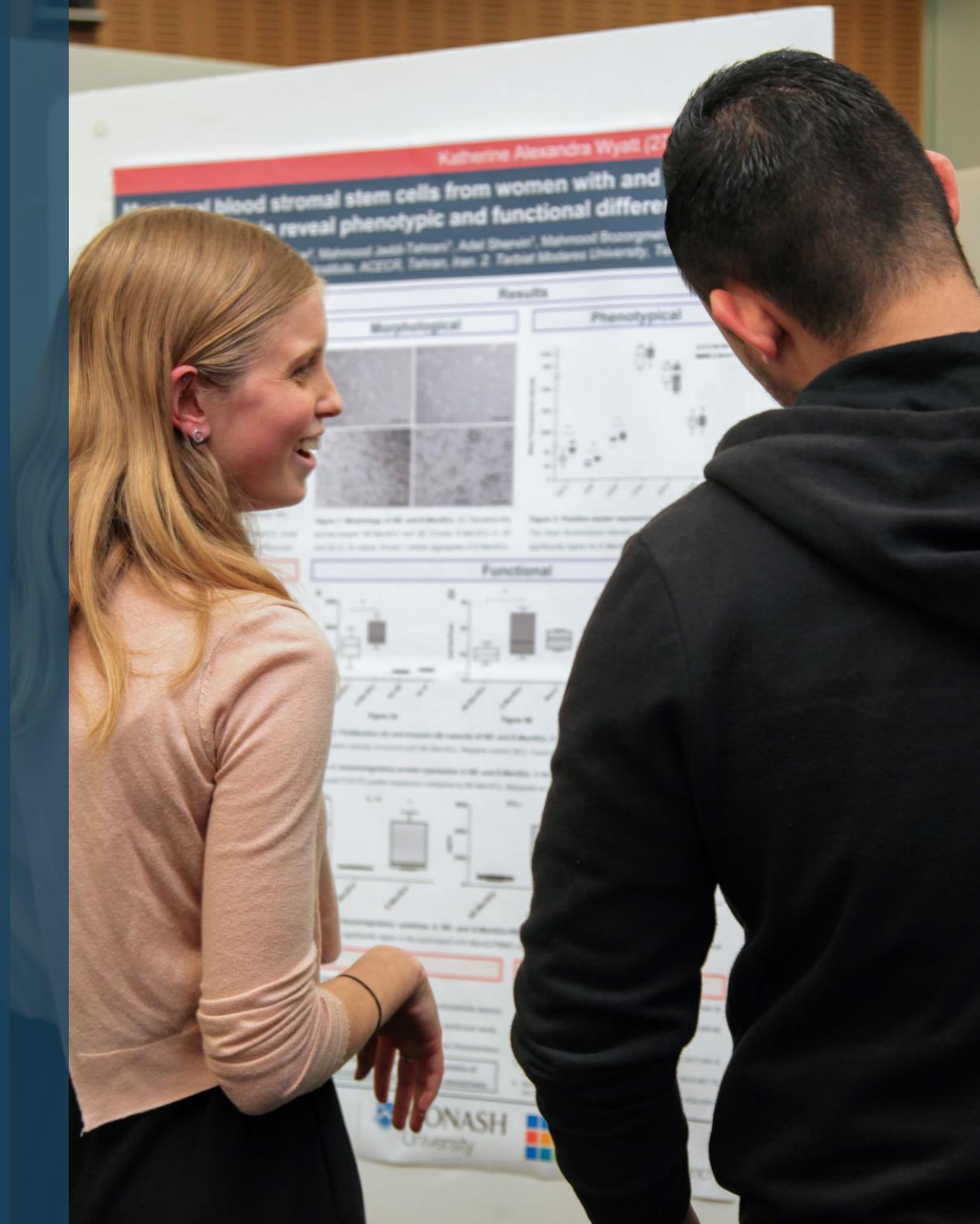
Combination of Coursework and Research Project

BMS4100 – Biomedical Science Research Project (75%):

- Students complete a supervised research project culminating in a thesis

BMS4200 Coursework (25%):

- Biostatistics Course - 8 - 10 lectures
- essay and synopsis - Scientific Poster - Travel Grant Application






The Biomedical Science Honours Course (code M3702) comprises two units:

BMS4100 Biomedical Research Project (36 points)	Assessment	
Literature Review	10%	School/Department
Seminar 1	S or NS	School/Department
Seminar 2	10%	School/Department
Thesis	80%	School/Department
Thesis Review		School/Department
Total	100%	

BMS4200 Advanced Studies in Biomedical Science (12 points)	Assessment	
Discipline-Specific component	60%	School/Department
Biostatistics course	40%	Faculty
Total	100%	

Minimum Entry Requirements

(Domestic students)

-  **Bachelor's degree in Biomedical Science from Monash or equivalent qualification required**
-  **Monash students need 70%+ average in 24 points at third-year level (12+ points in core units)**
-  **Non-BMS or non-Monash applicants must show comparable performance in equivalent biomedical science courses**

Application Process

BMS Hons

Look for a project and supervisor

Hudson Institute

<https://www.hudson.org.au/students/student-projects-search/>

SF-CAMM

<https://www.monash.edu/medicine/scs/available-research-projects>

Supervisor Connect

<https://www.monash.edu/medicine/research/supervisorconnect>



Contact the prospective supervisor:

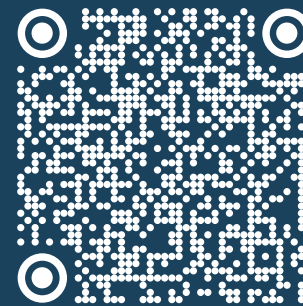
- Discuss the potential project
- Organise a tour of the lab

Contact:

A/Prof Simon Chu (simon.chu@Hudson.org.au)
or A/Prof Paul King (paul.king@monash.edu)

- Inform us that you have met/discussed project with a potential supervisor

Apply online:

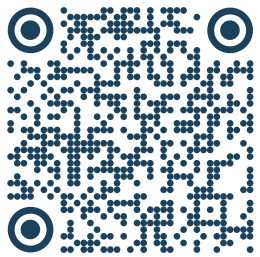


- <https://www.monash.edu/study/courses/find-a-course/biomedical-science-m3702#application-fees>
- You will need to send your application to the BMS Honours co-convenors

Application Process

BSc Hons

Similar process and requirements, but through the Faculty of Science



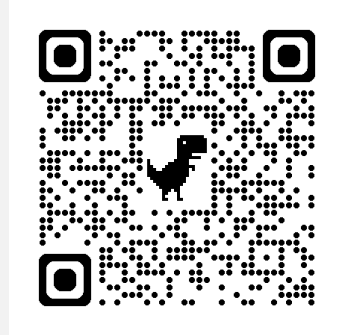
Enrolment is through one of the Monash University Departments (<https://www.monash.edu/science/current-students/science-honours>)

You will need to contact the Honours coordinator of the Department you will enrol through, as well **A/Prof Simon Chu** (Hudson Institute)



BMedSc (Hons)

= Honours for medical students



Similar process and requirements.

<https://www.monash.edu/medicine/som/bmedsc-hons>

Contact the SF-CAMM BMedSc(Hons) coordinator:

A/ Prof. Rimma Goldberg

Or

The Director of Medical Student Research:

A/Prof. Megan Wallace



Closing Date for Honours 2025

For students wishing to enrol in Honours commencing Semester 1 2026:

14th November 2025: Honours application closing date

23 February 2026: Official start date of compulsory research-orientation activities

For students wishing to enrol in Honours commencing Semester 2 2026:

~mid June 2026: Honours application closing date

~ 20th July 2026: Start date of compulsory research-orientation activities

For students wishing to enrol in BMedSci (Hons) commencing Semester 1 2026:

31st October: Honours application closing date

23 February 2026: Official start date of compulsory research-orientation activities

Contacts

BMS Honours

A/Prof Simon Chu (simon.chu@hudson.org.au)

A/Prof Paul King (paul.king@monash.edu)

mmc.honours@monash.edu

BSc Honours

A/Prof Simon Chu (simon.chu@hudson.org.au)

mmc.honours@monash.edu

BMedSc (Hons)

A/Prof Rimma Goldberg (rimma.Goldberg@monash.edu)

A/Prof Megan Wallace (megan.Wallace@monash.edu)

Lacey Klompmaker
Jenna Douglas

Student Experience

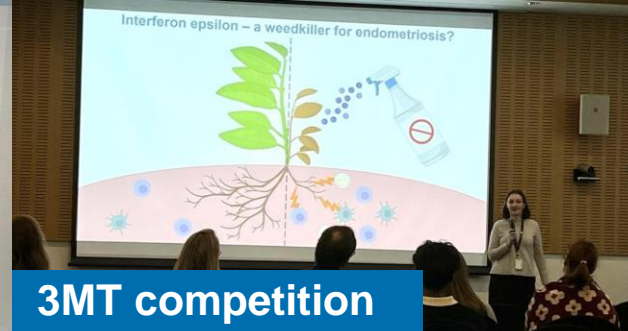
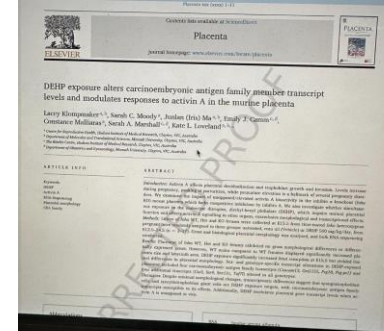
Research at MMC

- Closely linked with hospital – translational research
- Flexibility – work-life balance
- Collaboration
- Opportunities to ‘try’ before you start – summer scholarships
- Lots of platforms available, access to Monash facilities as well



Academic Opportunities

- Conferences and presentation opportunities - eg. ASMR, Colloquium, 3MT
- International collaborations
- Career-building opportunities and events for students - support for a range of careers, commercialisation



3MT competition

Publication opportunities



Seminar Series



Awards

Conferences

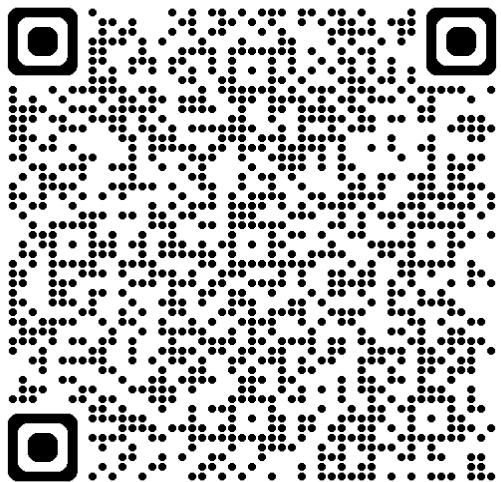


Presenting to international collaborators

Social Opportunities

- Student societies (HISS) - social events, opportunities for leadership roles
- Mixers – community across the institute





Student projects booklet

THANK YOU

Call to actions:

Find out more at

monash.edu/medicine/sub-faculty-of-clinical-and-molecular-medicine

Visit Student Connect to find a project and supervisor

monash.edu/medicine/research/supervisorconnect



MONASH
University



MONASH
CLINICAL AND
MOLECULAR MEDICINE



Scan QR code for more
information about
our Sub-Faculty. We're part
of the Faculty of Medicine,
Nursing & Health Sciences