



MONASH
University

FINKEL CHAIR IN GLOBAL HEALTH - 2024 IMPACT REPORT



FINKEL CHAIR IN GLOBAL HEALTH

2024 Impact Report

Prepared for the
Alan and Elizabeth Finkel Foundation

CRICOS provider: Monash University 00008C.





THANK YOU

On behalf of Monash University and the Faculty of Medicine, Nursing and Health Sciences, I would like

to extend our deepest gratitude for your support of The Finkel Chair in Global Health. Your vision and partnership have played a transformative role in changing the outcomes for future generations across the globe, from Australia to low and middle-income countries.

What began as a fledgling concept, driven by a handful of committed individuals led by Professor Jane Fisher AO, has grown exponentially, thanks in large part to your early belief in the potential of these programs. The impact of your support has been truly global.

Research outcomes and proven efficacy have garnered attention not only from governments but also more recently from major international funders. This additional backing will allow our work to reach even more countries in our Indo-Pacific region, providing them with the tools and knowledge needed to tackle critical health challenges in early-childhood development, women's health and beyond.

The growth in both scope and influence of these initiatives stands as a testament to the strength of the scholarly leadership you have helped build — a group of dedicated professionals, led by Professor Fisher. Your support is the very foundation of a legacy that is poised to positively impact global health for generations to come.

Thank you once again for your passionate belief in our work. We look forward to the prospect of continuing to deliver global change in partnership with you.

Professor Christina Mitchell AO

*Executive Dean,
Faculty of Medicine, Nursing and Health Sciences*



EXECUTIVE SUMMARY

The impact of your generosity in supporting the Finkel Chair in Global Health is transformational. Your support has enabled our Global and Women's Health Unit to flourish and to complete and translate meaningful research locally and globally.

Your commitment exemplifies the power of philanthropy to empower communities through research and capacity building, transform policy and practice to address inequalities and strengthen health systems worldwide.

With your generosity, we are not only expanding our reach but also leveraging your donation to amplify impact. Between 2018 and 2024 members of the Unit were named as investigators on grants secured from nationally competitive sources, international and national foundations, and through government tenders worth in total more than \$65 million. Of this, \$9.85 million has been secured for the Unit and used to support salaries and direct research costs. As described in this report, in 2024 we secured substantial funding for 2025 - 2028 from two European foundations to extend our research in Vietnam.

Also, since 2018, we have built capacity through supervision to successful completion of 24 PhD scholars, with another five underway and 12 Master's and Honour's research projects. We have provided supervision to 15 medical students undertaking their final year scholarly intensive projects and hosted several interns.

Our work is deeply rooted in communities, equipping them with the knowledge and tools to thrive where it's needed. Health inequities are worst among people living in the most disadvantaged communities in Australia and the low- and middle-income countries of our region. The challenges facing these populations are complex and benefit from sustained engagement.

Through this report, we have outlined the ways we are working to improve health through generating locally relevant evidence and applying it in co-developed local strategies to reduce risk factors like family violence, discrimination, and poverty which underpin disparities in global health.

On behalf of the Global and Women's Health Unit, my sincerest thanks for your invaluable support for the Finkel Chair in Global Health.

Professor Jane Fisher AO
Finkel Professor in Global Health
Director Global and Women's Health

FROM LOCAL INCEPTION TO INTERNATIONAL IMPACT



Monash University's commitment to thriving communities has prioritised the importance of understanding what is needed to enable a society to function at its best.

The Finkel Chair in Global Health within the Faculty of Medicine, Nursing, and Health Sciences is a testament to achieving this aim.

Translating its research into direct improvement in human health, the Chair is not just a local initiative but an ambitious global force.

With the wealth of expertise in Monash's affiliated medical research institutes at its disposal, bolstered by the University's local and global cross-disciplinary and cross-faculty research networks, it is strategically positioned to make a significant impact on a worldwide scale, fostering hope and optimism for the future of global health.

The seeds of the Learning Club initiative in Vietnam were planted years ago. With The Alan

and Elizabeth Finkel Foundation's generous support, they have flourished into a powerful, impactful program at the precipice of creating lasting change through extended multi-national funding.

Professor Fisher and her team have proven that the Learning Club program that invests in optimising early childhood development will have far-reaching global benefits, transforming lives in resource-constrained countries and creating a positive ripple effect for generations to come. The Foundation's philanthropy has not only turned a concept into reality but is also shaping a brighter, healthier future for communities worldwide.

Now at a pivotal moment in its multi-year history, this unique and bold vision, bolstered by the Alan and Elizabeth Finkel Foundation's philanthropic spirit, is poised to achieve a global, real-world impact.

EMPOWERING COMMUNITIES THROUGH RESEARCH AND CAPACITY BUILDING

LEARNING CLUBS TAKE FLIGHT

In many ways a child's first 1000 days – from conception to the age of two – determines the rest of their lives. In low- and middle-income countries, it is estimated that more than 250 million young children do not reach their developmental potential annually.

The Global and Women's Health Unit under the guidance of Professor Fisher, the Finkel Chair in Global Health, has continued, among other projects in 2024, to leverage its established Vietnam-Australia partnership addressing globally relevant risks to optimal childhood development through scalable, structured community-based Learning Clubs.

In Vietnam, Professor Fisher has worked since 2000 with the Research and Training Centre for Community Development in a co-developed, multi-stranded research program to build evidence about the health of women, girls and young children in poor rural communities. Building on this evidence, they developed the successful community-based Learning Clubs intervention, which is known as Hành Trình Đầu Dòì, the Early Journey of Life in Vietnam. Ten candidates have completed their PhD and Master's degrees on aspects of this work building considerable local research capacity in Vietnam and in global health.

The intervention has been successful on every metric. Learning Clubs have been shown to



improve the cognitive development of two-year-olds by improving the caregiving milieu in their homes. It is cost-effective and scalable and increases equity through providing the greatest benefit to the poorest children. It also led to more gender equitable attitudes and behaviours among men whose families were engaged in the program.

The Learning Clubs intervention is an evidence-informed, culturally and linguistically adapted structured program that seeks to address the risks to optimal early childhood development by combining perinatal stage-specific information, learning activities and social support. The program enjoys provincial and national government support in Vietnam and is aligned with national programs and international guidelines.

The Learning Clubs program has gained global support, including from the World Health Organisation which is incorporating its insights into the Nurturing Care Framework strategy to help countries address the needs of young children.

AMPLIFICATION OF ALAN AND ELIZABETH FINKEL FOUNDATION'S PHILANTHROPIC GENEROSITY

At the end of 2023 Professor Fisher was approached by The Human Safety Net, the philanthropic arm of Italy's Generali Group, to explore a potential partnership supporting initiatives to improve early childhood development including in Indo-Pacific countries, which culminated in an agreement for a three-year grant. This important development enables Professor Fisher and her colleagues in Vietnam and Australia to adapt the Learning Clubs program for the poorest people who are members of ethnic minority groups living in Vietnam's remote mountainous provinces. It also supports the partial digitisation of the program so that it can be offered in a hybrid format to people in three better resourced provinces.

The Human Safety Net's preference for philanthropic co-funding saw the introduction of the LEGO Foundation to the partnership. The philanthropic arm of the LEGO Group, the Lego Foundation committed to a four-year partnership, specifically to support evidence

building alongside the cultural, linguistic and digital adaptation work. With the Foundation's support, we will follow up and reassess the children (now aged six years) who were participants in the original Learning Clubs trial, along with their parents. The funding will also allow us to conduct a cluster randomised trial of the culturally and linguistically adapted version of the program to establish its effectiveness and cost-effectiveness for an ethnic minority group in a remote province.

Crucially, the project will work closely with Vietnam's Ministry of Health. They have indicated that, with this further evidence, consideration will be given to making the program part of national health services and making it available to every child in the country.

Professor Fisher and Ms Ha Tran, Director of the Research and Training Centre for Community Development in Hanoi, our partner on the project, were invited as new grantees to The Human Safety Net's Networks 24 meeting in Venice in November 2024. The focus was on how to ensure that private – government – non-government partnerships had measurable social impact.





TRANSFORMING POLICY AND PRACTICE TO ADDRESS VIOLENCE AND INEQUALITIES

AUSTRALIAN RESEARCH COUNCIL CENTRE FOR THE ELIMINATION OF VIOLENCE AGAINST WOMEN (CEVAW)

Launched in December 2024, this groundbreaking new Centre is the first of its kind in the world. It aims to transform understanding of the structural factors that cause and compound violence against women, and to pioneer new, evidence-based approaches to improve policy and practice across Australia and the Indo-Pacific.

Headquartered at Monash and led by Professor Jacqui True, CEVAW has 13 Chief

Investigators from six Australian universities, and 45 Australian and international partner organisations. The Centre mobilises Indigenous and survivor-centred approaches, along with interdisciplinary collaborations, to address violence against women across the legal, security, economic, health, and political systems of Australia and the region.

A CEVAW Chief Investigator, Professor Fisher is leading the Causes and Costs Pillar. With partners in each country, she will be leading research to provide local evidence about the prevalence and nature of experiences of violence experienced by women and girls in Vietnam, Indonesia and Fiji.

BUILDING RESILIENCE AND STRENGTHENING HEALTH SYSTEMS

FIRE TO FLOURISH

Fire to Flourish is a major Monash led program supported by the Paul Ramsay Foundation and the Lowy Foundation. Through partnerships with councils and community organisations in four local government areas (LGAs) affected by the 2019 – 2020 summer bushfires, it aims to facilitate local recovery and resilience.

Following disasters, communities benefit from having up-to-date and specific data about the health and wellbeing of their local population. This can inform policies and guide advocacy and recovery efforts.

However, there are significant gaps in the existing literature. There are few long-term follow up data on population health and wellbeing following disasters. None of the prior surveys sought to understand Aboriginal and Torres Strait Islander peoples' experiences and perspectives or analysed the data to distinguish their needs and experiences from those of others. None were created with community consultation or returned the findings to communities.

Professor Fisher is leading the Health and Wellbeing Survey stream of the program which seeks to address these gaps and provide communities with these up-to-date data. In 2024 the team, which includes Dr Revathi Krishna, Ms Mellissa Kavanagh and Associate Professor Julie Willams, consulted closely with Indigenous and non-Indigenous community groups in the four LGAs. They have co-designed a survey which will be rolled out in East Gippsland, Eurobodalla, Tenterfield and the Clarence Valley LGAs in 2025.

IMPACT OF RESIDENTIAL EARLY PARENTING PROGRAMS ON PERINATAL MENTAL HEALTH AND UNSETTLED INFANT BEHAVIOURS

Australia's residential early parenting centres are unique; there are no equivalent services in other countries. With support from the Ramsay Hospital Research Foundation (2020-2022), Professor Fisher and colleagues set up an electronic patient outcomes record system at

Masada Private Hospital Early Parenting Centre, where she is a sessional consultant clinical psychologist. The team, which includes Dr Thach Tran, Dr Karin Stanzel and Ms Hau Nguyen, collected anonymised data from 1200 women admitted consecutively to the service with their babies. Through this they identified the highly beneficial impacts of the five-night program for most women and infants and the characteristics of patients for whom it is insufficient.

On the basis of this work, the Ramsay Hospital Research Foundation has provided additional funding (2024-2027) to collaborate with Tresillian Family Care in New South Wales and assist them to build equivalent evidence about their service for benchmarking and continuous quality improvement.

ADDRESSING GENDER BIAS IN HEALTHCARE

The Global and Women's Health Unit bid successfully for a tender called by the Australian Department of Health and Aged Care to lead a literature review to inform strategies to address sex and gender bias in the health system. Led by Dr Maggie Kirkman, the findings were presented at a roundtable convened by Assistant Minister for Health Ged Kearney for Deans of Australasian Medical Schools in Parliament House and to the National Health and Medical Research Council in June 2024.

Professor Fisher is a Chief Investigator, with specific contributing projects on two newly funded National Health and Medical Research Council Centres of Research Excellence. The Centre of Research Excellence in Science Translation for e-Psychological Perinatal Supports (STePPS CRE) is led by Professor Jeanette Milgrom of the Parent Infant Research Institute at the University of Melbourne. The Centre of Research Excellence in Women's Sexual and Reproductive Health in Primary Care (SPHERE CRE) is led by Professor Danielle Mazza, Head of the Department of General Practice at Monash.

THE FOOTPRINT OF IMPACT AND INFLUENCE BY THE FINKEL CHAIR

GRANTS

FISHER J, Tran T, Popplestone S. Early Childhood Development in Fiji: Addressing Policy Evidence Gaps. Trustee for Jasper Foundation, 1/1/2024-31/12/2025, \$10,000. GWHU

FISHER J, Stanzel K, Dwyer A, Tran T, Nguyen H & Thean P. Collaboration between a public and a private early parenting centre to improve social disadvantage through continuous quality improvement. Ramsay Hospital Research Foundation Ltd, 1/07/2024-30/06/2027, \$400,000. GWHU

Koplin J, Clifford V, Amir LH, FISHER J, Dalziel K, Price SA, Tottman A, Rumbold AR, Perrett KP, Klein L, Macnab H, Brown R, Stanzel K, Burgner D, Mansell T. Pasteurised donor human milk supplementation for term babies. 1/02/2024-31/01/2028. National Health and Medical Research Council, \$1,126,309; Ramsay Hospital Research Foundation Ltd, \$722,852; Australian Red Cross Lifeblood (Victoria): \$100,000. GWHU will receive \$140K

Mazza D, Black KI, Bateson DJ, Norman WV, Mishra GD, FISHER J, Grzeskowiak LE, Edvardsson K, Tarzia L, Cameron S, McMillan F, Parker S, Michelmore J, Carr R, Price K, Taft AJ, Gemzell-Danielsson K, Grossman D, Stephenson JM, & French R. SPHERE - The Centre of Research Excellence in Women's Sexual and Reproductive Health in Primary Care. National Health and Medical Research Council, 5/02/2024-31/01/2029, \$2,500,000. GWHU will receive \$120K

REGULAR MEDIA APPEARANCES

Professor Fisher's regular guest slot on ABC Radio Melbourne's Life and Other Catastrophes continued into its thirteenth year. Addressing all sorts of human experiences: work, relationships, migration, problem-solving and managing

disappointment and differences, the popular talkback segment is hosted by Raf Epstein whose program reaches around 775,000 listeners every week.

This regular media appearance provides an opportunity to highlight Professor Fisher's role and expertise as the Finkel Chair in Global Health, which helps highlight the importance of this academic research.

MENTORING THE NEXT GENERATION OF LEADERS

We continued our supervision and mentorship with nine new and continuing research higher degree and postgraduate students and two mentorship students.

Three PhD candidates were awarded their degrees in 2024.

Dr Yeji Baek was supervised by Dr Alice Owen, with Professor Jane Fisher, Dr Thach Tran and Zanfina Ademi as co-supervisors. Her thesis was titled *Economic evidence for early childhood development interventions in low-and middle-income countries*.

Dr Natasha Davidson was supervised by Professor Jane Fisher with Dr Karin Hammarberg as co-supervisor. Her thesis was titled *Preventive sexual and reproductive healthcare for women from refugee-like backgrounds in Australia*.

Dr Faye Forbes was supervised by Professor Jane Fisher, with Dr Karen Wynter and Dr Berihun Zeleke as co-supervisors. Her thesis was titled *Male partner involvement in perinatal healthcare: A multiple method exploration in sub-Saharan Africa and among culturally and linguistically diverse families in Australia*.

Our current PhD candidates are:

Chetthana Mudunna whose research explores the nature and prevalence of mental health problems experienced by secondary school students in Sri Lanka;



Harish Kalra who has investigated the burden of perinatal mental health problems experienced by women in India and the gaps in the policy context to address them;

Medhavi Weerasinghe who is researching access to sexual and reproductive health information for university students in Sri Lanka and factors influencing early childhood development in Fiji;

Sally Popplestone whose research is about the factors influencing the development of children in the second 1000 days of life, from ages two to five, in Pacific Island nations;

Sethini Wickramasinghe who is investigating barriers to accessing contraception experienced by women who have migrated to Australia from South Asian countries;

Yadanar Yadanar who is investigating whether school-based programs are effective in reducing gender-based violence in Fiji.

INTERNATIONAL, NATIONAL AND STATE ROLES

CONTRIBUTING TO THE WORLD HEALTH ORGANISATION AND UNICEF

Already a member of the World Health Organization and UNICEF Nurturing Care Implementation Working Group, Professor Fisher has provided technical advice to WHO and UNICEF on the implementation of the Nurturing Care Framework - in particular, how

these agencies can consider the needs of caregivers as well as young children in resource-constrained settings. She is a member of WHO's Expert Advisory Committee on Perinatal Mental Health.

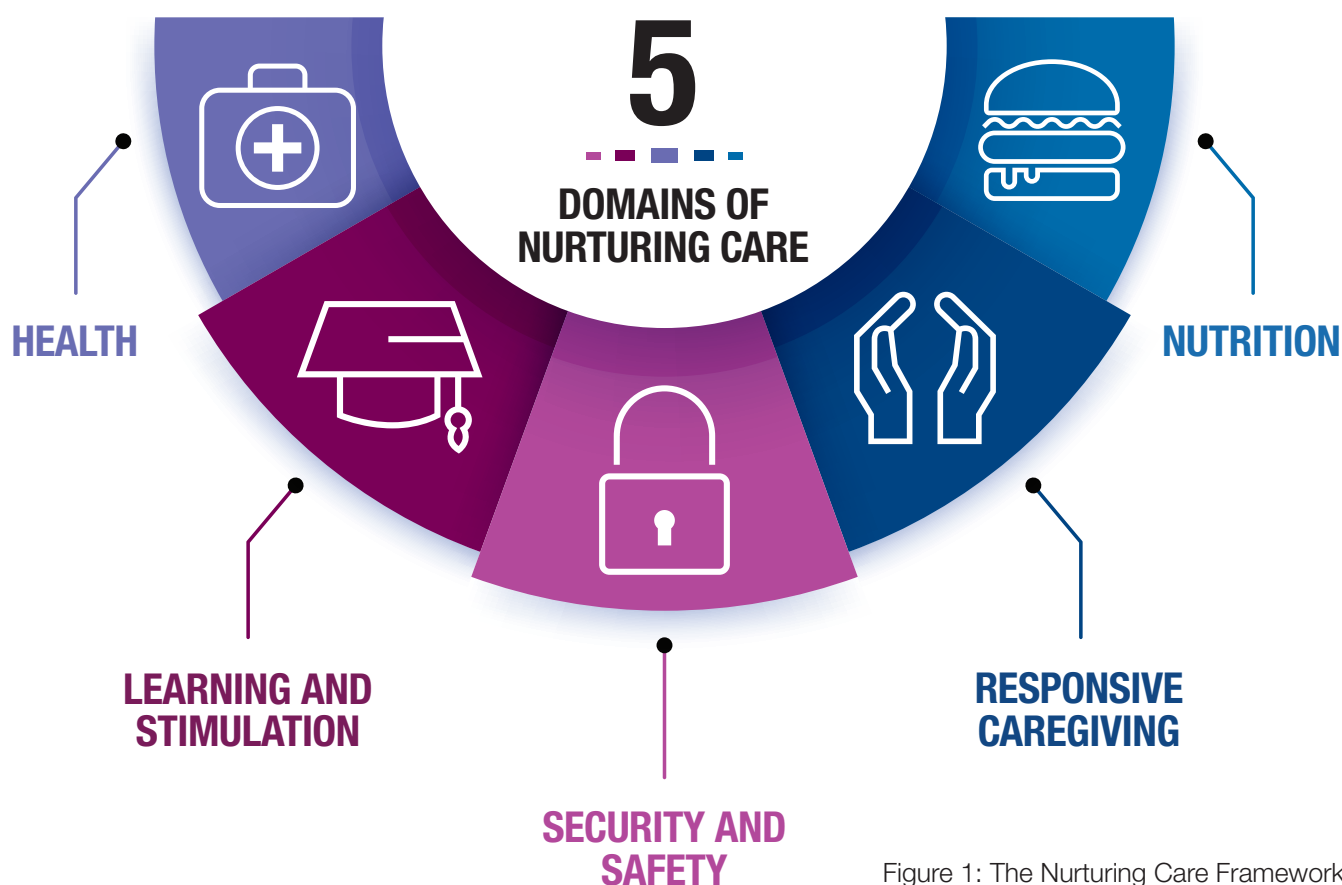


Figure 1: The Nurturing Care Framework

DRIVING CHANGE WITH THE UNITED STATES AGENCY FOR INTERNATIONAL DEVELOPMENT

The USAID development agency's MOMENTUM Country and Global Leadership initiative aims to support governments to accelerate improvements and achieve equity in maternal, newborn and child health. Professor Fisher was a member of the Technical Consultation

Committee and joined their Maternal Mental Health Community of Practice Steering Committee. She has been appointed Co-Chair of the Evidence and Impact Technical Working Group of the Perinatal Mental Health Community of Practice.

PERINATAL MENTAL HEALTH THEORY OF CHANGE

USAID’s Country and Global Leadership arm, MOMENTUM, collaborated with global experts on perinatal mental health to deliver a webinar introducing a global theory of change. Professor Fisher was a key panellist discussing the worldwide occurrence of mental health problems in women who are pregnant or have recently given birth. The launch of the ‘Perinatal Mental Health Theory of Change: Next steps for a common global vision’ included discussion about leveraging a shared global vision to improve maternal and newborn health.



You can watch the discussion at: [youtube.com/watch?v=q9Sq4rc-_-0&t=3s](https://www.youtube.com/watch?v=q9Sq4rc-_-0&t=3s)

RECOGNITION BY THE AUSTRALIAN ACADEMY OF HEALTH AND MEDICAL SCIENCES (AAHMS)

In recognition of her outstanding achievements and exceptional contributions to the health and medical sector, Professor Fisher was in October 2024 elected as a Fellow of the Australian Academy of Health and Medical Sciences (AAHMS). Australia’s prestigious academy acknowledges the most influential experts in health and medicine and sees Fellows elected by their peers for their clinical, non-clinical, leadership, industry and research contributions.

MY DREAM IS THAT THAT EARLY CHILDHOOD DEVELOPMENT BECOMES PART OF EVERYONE’S LANGUAGE AND THAT COUNTRIES SEE IT AS WORTH INVESTING IN.”

- Professor Jane Fisher AO

CO-CHAIR OF THE VICTORIAN DEPARTMENT OF HEALTH’S EXPERT ADVISORY COMMITTEE ON PERINATAL MENTAL HEALTH SCREENING

Professor Fisher is Co-Chair of the Expert Advisory Committee that is assisting the Victorian Department of Health. Victoria is preparing evidence-based guidelines for best practice in screening women who are pregnant or who have recently given birth for perinatal mental health problems.

HEAD OF PUBLIC HEALTH AND PREVENTIVE MEDICINE SPECIAL AWARD FOR GLOBAL HEALTH LEADERSHIP

Following the significant success of the World Health Summit Regional Meeting held in Melbourne in April 2024, Monash Head of Public Health and Preventive Medicine, Professor Sophia Zoungas, recognised the contributions of Public Health and Preventive Medicine leaders in advancing global health. Professor Fisher was honoured with the Special Award for Global Health Leadership.



Scan the QR code or visit <https://www.youtube.com/watch?v=onpL4vFNsCY> to watch Professor Fisher describe the vision and impact of the learning clubs

THE ROAD AHEAD

Professor Fisher's sustained and ongoing contributions to advancing health and medical science are demonstrated in her research and capacity-building in Australia and the Indo-Pacific region.

Over the next five years, she and her team aim to take their research insights and translate them into ensuring diverse communities in Australia, South-East Asia and the Pacific thrive.

What began as a visionary idea has flourished, drawing global interest from organisations that recognise the immense potential and long-term impact of this initiative. The initial funding provided the foundation for a program that has grown into a viable and powerful solution, capturing the attention of international funding agencies.

It is no accident that Monash University has been the enabling environment in which this research partnership has been fostered and enabled to grow. These international backers have invested in our proven track record and meticulous management of complex projects, confident that their support will continue driving

change and delivering meaningful results across communities worldwide.

While this international support is critical for the ongoing success of the program's projects, it does not cover the essential costs of the program's core infrastructure— Professor Fisher and core cross-project staff, who are the scholarly leaders behind the initiative. The expertise, innovation, and strategic thinking that brought this program to life and continues to steer it toward greater success relies on overhead funding. Like the roots of a tree, this core support is essential for sustaining the growth of the program, ensuring it remains strong and resilient for years to come.

Just as the initial seed funding sparked the development of this transformative solution, ongoing investment in the program's foundation is needed to maintain its strength and vitality. Supporting the brains trust and its infrastructure will enable the program to continue expanding its reach, driving meaningful change, and ensuring that the impact created today endures for future generations.



PRESENTATIONS AND PUBLICATIONS

PROFESSOR FISHER'S PRESENTATIONS 2024

Advancing Equity and Violence Prevention

Fisher J. Identifying evidence gaps in evidence about violence against women and girls in Indonesia, Fiji and Vietnam. *Centre for the Elimination of Violence Against Women Workshop Gadjah Mada University, Jogjakarta, Indonesia*, February 2024

Fisher J. Literature review of sex and gender bias in health care. *Invited presentation to the National Women's Health Advisory Council Meeting*, March 2024

Fisher J. Early childhood development: considerations for programs and policies. *Asian Ventures Philanthropy Network Conference, Monash University, Chancellery*, March 2024

Fisher J. Learning Clubs: implementation and evaluation of an early parenting program in rural Vietnam. *Early Childhood Development in Global Contexts, Harvard University*, Invited Webinar, March 2024.

Fisher J. Screening for perinatal mental health problems: when, where and how. *MOMENTUM Country and Global Leadership Perinatal Mental Health Community of Practice*, Invited Webinar, 3rd April 2024

Fisher J. Achieving health equity for women and girls. Session Convenor. *World Health Summit*, Melbourne. 22nd April 2024.

Fisher J. Pacific priorities for prevention of violence against women. *Centre for the Elimination of Violence Symposium World Health Summit, Melbourne*, 22nd April 2024.

Fisher J. Social determinants of perinatal mental health problems, *Perinatal Anxiety and Depression Australia Professional Development Conference*, May 2024.

Kirkman M and Fisher J. Literature review to inform strategies to address sex and gender bias in the health system. *Presentations to the Assistant Minister for Health and the Association of Medical Deans of Australasia Parliament House, and the National Health and Medical Research Council Canberra*, June 2024.

Mental Health, Parenting, and Policy Integration

Fisher J, Tran T, Stanzel K, Thean P. Impact of a private-sector residential early parenting program on clinically-significant postnatal depressive symptoms. Oral Presentation *International Marcé Society Biennial Conference, La Fira, Barcelona*, September 2024.

Fisher J. Integration of mental health into routine maternity and primary care in Australia. *Invited Keynote Presentation Department of Health and Aged Care Symposium Perinatal Mental Health Week*. Parliament House, Canberra, November 2024.

Fisher J. Integrating violence reduction strategies into early parenting programs in resource-constrained settings. *Centre for the Elimination of Violence Against Women Research Ethics and Training Program*. November 2024

Fisher J, Islam A, Mataia L, Singh N. Multiple disciplines and multiple methods: addressing gaps in evidence about violence against women and girls in Indo-Pacific nations. *Centre for the Elimination of Violence Against Women Symposium*, December 2024.

GLOBAL AND WOMEN'S HEALTH 2024 PUBLICATIONS

Beilby K, Hammarberg K. ChatGPT: a reliable fertility decision-making tool? *Human Reproduction*. 2024 Mar 1;39(3):443-447. DOI:10.1093/humrep/dead272

Biggs S, Halliday J, Hammarberg K. Psychological consequences of a diagnosis of infertility in men: a systematic analysis. *Asian Journal of Andrology*. 2024 Feb 1;26(1):10-9. DOI:10.4103/aja202334

Copp, T., Thompson, R., Hammarberg, K., Lensen, S., Augustine, L., Doust, J., Peate, M., Cvejic, E., Mol, B.W., Lieberman, D. and McCaffery, K.J., 2024. Attitudes, knowledge and practice regarding the anti-Müllerian hormone test among general practitioners and reproductive specialists: A cross-sectional study. *BJOG: An International Journal of Obstetrics & Gynaecology*. 2024; 9:1–8. DOI:10.1111/1471-0528.17741

Copp T, van Nieuwenhoven T, McCaffery K, Hammarberg K, Cvejic E, Doust J, Lensen S, Peate M, Augustine L, van der Mee F, Mol BW, Lieberman D, Jansen J. Women's interest, knowledge and attitudes relating to anti-Mullerian hormone testing: a randomised controlled trial. *Human Reproduction*. 2024 Sep 1;39(9):2010-20. DOI:10.1093/humrep/deae147

Copp, T. and Hammarberg, K. Most donor-conceived people have good psychological health. *BJOG: An International Journal of Obstetrics & Gynaecology*. 2024 Jul 9. DOI:10.1111/1471-0528.17908

Davidson N, Hammarberg K, Fisher J. 'If I'm not sick, I'm not going to see the doctor': Access to preventive sexual and reproductive health care for Karen women from refugee backgrounds living in Melbourne, Australia—A qualitative study. *Health Promotion Journal of Australia*. 2024; DOI:10.1002/hpja.844

Davidson N, Hammarberg K, Fisher J. Primary health care providers' knowledge, practices and beliefs relating to preventive sexual and reproductive health care for women from refugee and asylum-seeking backgrounds in Australia: A national cross-sectional survey. *Australian Journal of Primary Health*. 2024; 3;30(5). DOI:10.1071/PY23171

Davison N, Stanzel K, Hammarberg K. The impact of social determinants of health on Australian women's capacity to access and understand health information: a secondary analysis of the 2022 National Women's Health Survey. *Healthcare*. 2024; 12(2):207. DOI:10.3390/healthcare12020207

Davison N, Waddell A, Chandrasekara D, Tran T, Hammarberg K, Kirkman M, Nimesh S, Lowthian JA, Olivier P, Romero L, Fisher J. Barriers and facilitators to implementing psychosocial digital health interventions for older adults presenting to emergency departments: a scoping review protocol. *BMJ Open*. 2024 1;14(8):e085304. DOI:10.1136/bmjopen-2024-085304

Draper CE, Yousafzai AK, McCoy DC, Cuartas J, Obradović J, Bhopal S, Fisher J, Jeong J, Klingberg S, Milner K, Pisani L, Roy A, Seiden J, Sudfeld C, Wrottesley S, Fink G, Nores M, Tremblay M, Okely A. The next 1000 days: building on early investments for the health and development of young children. *The Lancet*. 2024; 18;404(10467):2094-2116.

Dwyer R, Jachno K, Tran T, Owen A, Layton N, Collyer T, Kirkman M, Lowthian J, Hammarberg K, McNeil JJ, Woods RL, Berk M, Fisher J. Symptoms of depression and risk of emergency department visits among people aged 70 years and over. *BMC Public Health*. 2024 5;24(1):385. DOI:10.1186/s12889-024-17794-6

Hore-Lacy F, Gwini S, Dimitriadis C, Jimenez-Martin J, Hoy R, Fisher J, Sim M, Walker-Bone K, Glass D. Measuring improvements in occupational health and safety in the artificial stone benchtop industry. *Annals of Work Exposures and Health*. 2024 26; wxae084. DOI:10.1093/annweh/wxae084

Fisher J, Stanzel K, Nguyen H, Thean P, French D, Popplestone S, Tran T. Impact of a private sector residential early parenting program on clinically significant postnatal depressive symptoms experienced by women: Audit of routinely collected data. *Acta Psychiatrica Scandinavica*. 2024;150(5):458-473. DOI: 10.1111/acps.13668

Gallagher S, Attinger S, Sassano A, Sutton E, Kerridge I, Newson A, Farsides B, Hammarberg K, Hart R, Jackson E, Ledger W. Medicine in the marketplace: clinician and patient views on commercial influences on assisted reproductive technologies. *Reproductive BioMedicine Online*. 2024 Jun 1;48(6):103850. DOI:10.1016/j.rbmo.2024.103850

Gang D, Kirkman M, Loff B. "Obviously it's for the victim to decide": Restorative justice for sexual and family violence from the perspective of second-wave anti-rape activists. *Violence Against Women*. 2024 11;30(12-13):3111-3452. DOI:10.1177/107780122311174

Hammarberg, K., Bandyopadhyay, M., Nguyen, H., Cicuttini, F., Stanzel, K.A., Brown, H., Hickey, M. and Fisher, J., 2024. Development and evaluation of 4 short, animated videos for women in midlife promoting positive health behaviors: Survey study. *Interactive Journal of Medical Research*, 13(1), p.e60949

Hammarberg K, Yang F, Volks C, Whittaker A. Quality of information for oocyte donors on South African donor agency websites: a content analysis. *Human Fertility*. 2024 14;27(1):2413531. DOI:10.1080/14647273.2024.2413531

Hore-Lacy F, Gwini S, Glass D, Dimitriadis C, Jimenez-Martin J, Hoy R, Sim M, Walker-Bone K, Fisher J. Psychometric properties of the Perceived Stress Scale (PSS-10) in silica-exposed workers from diverse cultural and linguistic backgrounds. *BMC Psychiatry*. 2024;24(1):181. DOI: 10.1186/s12888-024-05613-6

Hossain S, Rahman S, Fisher J, Rahman A, Tofail F, Hamadani J. Effect of a parenting and nutrition education programme on development and growth of children using a social safety-net platform in urban Bangladesh: a cluster randomized controlled trial. *The Lancet Regional Health - Southeast Asia*. 2024:100388. DOI:10.1016/j.lansea.2024.100388

Hossain SJ, Hamadani JD, Tofail F, Fisher J, Rahman MA, Rahman SM. Factors associated with children's cognitive, language, and motor development in deprived urban settings in Bangladesh. *Child: Care, Health and Development*. 2024; 10;50(1):e13225. DOI:10.1111/cch.13225

Jones KA, Henderson H, Bright T, Segal L, Mauerhofer O, Lake KJ, Julian R, Duncan J, Raymond A, Jones A, Cameron D, Fergie D, Andrews S, Stewart S, Atkinson C, Elliot A, Crawford B, Mohammed J, Bundle G, Hirvonen T, Gnanamanickam E, Davis E, Gee G, Herrman H, Fisher J, Lovett R, Campbell S, Forster D, Clark Y, Atkinson J, Marriott R, Chamberlain C. Healing the past by nurturing the future: trauma-aware, healing-informed care to improve support for Aboriginal and Torres Strait Islander families—implementation and evaluation study protocol. *BMJ Open*. 2024; 14(7):e085555. DOI:10.1136/bmjopen-2024-085555

Joyce A, Tran T, Stocker R, Fisher J. Mental and social wellbeing trajectory during the pandemic for vulnerable populations. *Frontiers in Public Health*. 2024; 12:1337401. DOI:10.3389/fpubh.2024 Apr 8.1337401

Kneebone E, Hammarberg K, Beilby K. Surrogates', intended parents', and professionals' perspectives on ways to improve access to surrogacy in Australia. *International Journal of Law, Policy and the Family*. 2024; 38(1). DOI:10.1093/lawfam/ebae009

- Levis B, Bhandari P, Neupane D, Fan S, Sun Y, He C, Wu Y, Krishnan A, Negeri Z, Imran M, Rice D, Riehm K, Azar M, Levis A, Boruff J, Cuijpers P, Gilbody S, Ioannidis J, Kloda L, Patten S, Ziegelstein R, Harel D, Takwoingi Y, Markham S, Alamri S, Amtmann D, Arroll B, Ayalon L, Baradaran H, Beraldi A, Bernstein C, Bhana A, Bombardier C, Buji R, Butterworth P, Carter G, Chagas M, Chan J, Chan L, Chibanda D, Clover K, Conway A, Conwell Y, Daray F, Ginkel J, Fann J, Fischer F, Field S, Fisher J, Fung D, Gelaye B, Gholizadeh L, Goodyear-Smith F, Green E, Greeno C, Hall B, Hantsoo L, Härter M, Hides L, Hobfoll S, Honikman S, Hyphantis T, Inagaki M, Iglesias-Gonzalez M, Jeon H, Jetté N, Khamseh M, Kiely K, Kohrt B, Kwan Y, Lara M, Levin-Aspenson H, Liu S, Lotrakul M, Loureiro S, Löwe B, Luitel N, Lund C, Marrie R, Marsh L, Marx B, McGuire A, Sidik S, Munhoz T, Muramatsu K, Nakku J, Navarrete L, Osório F, Pence B, Persoons P, Petersen I, Picardi A, Pugh S, Quinn T, Rancans E, Rathod S, Reuter K, Rooney A, Santos I, Schram M, Shaaban J, Shinn E, Sidebottom A, Simning A, Spangenberg L, Stafford L, Sung S, Suzuki K, Tan P, Taylor-Rowan M, TRAN T, Turner A, Feltz-Cornelis C, Heyningen T, Vöhringer P, Wagner L, Wang J, Watson D, White J, Whooley M, Winkley K, Wynter K, Yamada M, Zeng Q, Zhang Y, Thombs B, Benedetti A, for the Depression screening data (DEPRESSD) PHQ Group. Data-driven cutoff selection for the patient health questionnaire-9 depression screening tool. *JAMA Network Open*. 2024 Nov 4;7(11):e2429630. DOI:10.1001/jamanetworkopen.2024.29630
- Mabweazara G, Hammarberg K, Mhazo P. When assisted reproductive technology (ART) opens the door for inclusivity in a highly charged cultural milieu: an exploration of news articles on the establishment of ART clinics in Zimbabwe. *Culture, Health & Sexuality*. 2024; 17:1-6. DOI:10.1080/13691058.2024.2403104
- Marquina C, Morton JI, Lloyd M, Abushanab D, Baek Y, Abebe T, Livori A, Dahal P, Watts GF, Ademi Z. Cost-effectiveness of screening strategies for familial hypercholesterolaemia: An updated systematic review. *PharmacoEconomics*. 2024; 42(4):373-92. DOI:10.1007/s40273-023-01347-7
- Martins M, Koert E, Sylvest R, Maeda E, Moura-Ramos M, Hammarberg K, Harper J, on behalf of ESHRE's International Reproductive Health Education Collaboration (IRHEC). Fertility education: recommendations for developing and implementing tools to improve fertility literacy. *Human Reproduction*. 2024; 39(2):293-302. DOI:10.1093/humrep/dea
- McGuinness S, Eades O, Zhong S, Clifford S, Fisher J, Kelsall H, Kirkman M, Russell G, Skouteris H & Leder K. A longitudinal qualitative exploration of victorian healthcare workers' and organisations' evolving views and experiences during COVID-19. *BMC Health Services Research*. 2024; 24:596. DOI:10.1186/s12913-024-11067-z
- Pham MD, Wulan NR, Sawyer SM, Agius PA, Fisher J, Tran T, Medise BE, Devaera Y, Riyanti A, Ansariadi A, Cini K, Kennedy E, Wiweko B, Luchters S, Kaligis F, Wiguna T, Azzopardi S. Mental health problems among indonesian adolescents: findings of a cross-sectional study utilising validated scales and innovative sampling methods. *Journal of Adolescent Health*. 2024; 75(6):929-938. DOI:10.1016/j.jadohealth.2024.07.016
- Quin N, Tikotzky L, Astbury L, Spina MA, Fisher J, Stafford L, Wiley J, Bei B. Preventing postpartum insomnia: findings from a three-arm randomised controlled trial of Cognitive Behavioural Therapy for Insomnia, a responsive bassinet, and sleep hygiene. *SLEEP*. 2024; 47(8): zsa106. DOI:10.1093/sleep/zsae106
- Sandhu S, Hickey M, Koye D, Braat S, Lew R, Hart R, Norman R, Hammarberg K, Anderson R, Peate M. Eggsurance? A randomised controlled trial of a decision aid for elective egg freezing. *Human Reproduction*. 2024; 39(8):1724-1734. DOI:10.1093/humrep/deae121
- Stanzel K, Honda T, Tran T, Fisher J. Behavioural interventions for problematic infant sleeping and cry/fuss behaviour: a systematic review and meta-analyses. *Infant and Child Development*. 2024:e2554. DOI:10.1002/icd.2554

Tran T, Nguyen H, Shochet I, Nguyen N, La N, Wurfl, Orr J, Nguyen H, Stocker R, Fisher J. Psychometric properties of the Centre for Epidemiologic Studies Depression Scale Revised – Vietnamese Version (CESDR-V) among adolescent. *Psychiatry Research Communications*. 2024; 4(2):100165. DOI:10.1016/j.psycom.2024.100165

Tran T, Stanzel K, Nguyen H, Thean P, French D, Popplestone S, Fisher J. Effects of a residential psychoeducational parenting program on maternal anxiety and fatigue symptoms. *Journal of Reproductive and Infant Psychology*. 2024 Jan 10. DOI:10.1080/02646838.2024.2303468

Wells R, Klein L, Mohsin M, Greene MC, Fisher J, Silove D, Steel Z, Rees S. Longitudinal protective factors against intimate partner violence for women born in Australia and women from refugee backgrounds. *Women*. 2024; 4(3):317-331. DOI:10.3390/women4030024

Whittaker A, Gerrits T, Hammarberg K, Manderson L. Access to assisted reproductive technologies in sub-Saharan Africa: fertility professionals' views. *Sexual and Reproductive Health Matters*. 2024; 32(1):2355790. DOI:10.1080/26410397.2024.2355790

Wickramasinghe S, Fisher J, Taft A, Makleff S. Experiences of abortion care in Australia during the COVID-19 pandemic: examining multiple dimensions of access. *BMC Pregnancy and Childbirth*. 2024 Oct 7;24(1):652. DOI:10.1186/s12884-024-06758-8

Wijaya PE, Fisher J, Kirkman M. Female genital cosmetic surgery in Indonesia: a qualitative analysis of medical advertising on Instagram. *Culture, Health & Sexuality*. 2024; 1-14. DOI:10.1080/13691058.2024.2341843

Zamani M, Alimi R, Arabi SM, Moradi M, Azmoude E. Comparison of the efficacy of nifedipine with ritodrine, nitroglycerine and magnesium sulfate for the management of preterm labor: a systematic review and meta-analysis. *BMC Pregnancy and Childbirth*. 2024; 24(1):318. DOI:10.1186/s12884-024-06497-w

BOOK CHAPTERS

Moll T, Gerrits T, Hammarberg K, Manderson L, Whittaker A. Voyages reproductifs en provenance et au sein de l'Afrique subsaharienne : vue d'ensemble. In Rouland, B., Maffi, I., (eds.). Forthcoming. *Voyager pour procréer au Maghreb. Expériences au sein d'une nouvelle industrie médicale*, Paris: Karthala-IRMC, pp. 35-74.

TECHNICAL REPORTS

Kirkman M, Honda T, McDonald S, Romero L, Green S, Walker-Bone K, Winship I, and Fisher J. (2024, September). Literature review to inform strategies to address sex and gender bias in the health system. Department of Health and Aged Care. Commonwealth of Australia, Canberra. www.health.gov.au/resources/publications/literature-review-to-inform-strategies-to-address-sex-and-gender-bias-in-the-health-system



MONASH
University

CONTACT US

For further information, please contact:

Marita O'Callaghan

Director Development (Health Sciences)
Advancement
Monash University

M: 0409 740 127

E: marita.ocallaghan@monash.edu

Lisa Mitchell

Director, Development University
Advancement
Monash University

M: 0406 486 421

E: lisa.anne.mitchell@monash.edu



Visit **Giving to Monash** to see how philanthropy is changing it, for future generations. monash.edu/giving