



## IN THIS ISSUE

Fresh Faces P.2

New Funding Opportunities P.3

Retreat Preview P.3

ECR Spotlight P.4

## Billboard

### DATES FOR YOUR CALENDAR

#### Mentorship Seminar

**Topic:** *Introduction to mentoring*

**Presenter:** Linda Betts

**Date:** Tuesday May 7<sup>th</sup>

**Time:** 2pm-3.30pm

**Location:** Lecture Theatre  
Level 5 Alfred Centre

#### AMREP ECR RETREAT

**Date:** Thursday 26<sup>th</sup>

September – Friday 27<sup>th</sup>

**Location:** The Country  
Place, Kalorama

#### ABOUT ECRTIMES

**ECRTIMES** is the quarterly e-newsletter of the early career researchers of Central Clinical School, Monash University.

**ECRTIMES** is prepared by Damien Saulep-Easton

## 2013: New faces, new events, new funding opportunities and more...

### ANNA HEARPS STEPS DOWN

The ECR Committee would like to warmly thank **Anna Hearps** for her long-standing contribution to the committee and its initiatives, particularly the **Professional Development Seminar Series**. Anna will be taking a well-deserved break from ECR leadership commitments in 2013. We thank her for all her hard work and hope to see her as a guest at ECR events in 2013.

### MENTORSHIP PROGRAM

Following a very successful 2012, the ECR Mentorship program will continue in 2013. Please see our calendar for upcoming Mentorship training and information seminars and keep an eye out for our Mentorship Wrap-Up and Roadshow events in the first half of this year. For more details, contact **Sarah Charnaud, Carolina Weller or Lachlan Gray**.

### WELCOME TO NEW MEMBERS

We have some new faces in the ECR committee this year. See their profiles **on page 2**.

### GET INVOLVED!

Want to have a say in what happens to ECRs? Register your interest with us and become a member in 2013. Join us in making decisions that impact on ECR professional development here at AMREP.

*Photo, page top: (left to right) Bernadette Fitzgibbon, Rebecca Segrave, Stuart Lee, Sarah Charnaud, Lachlan Gray, Hao Lu, Renee Duncan, Carolina Weller. Absent: Maithili Sashindranath, Lavinia Tran, Elisha Horat, Roslin Botlero, Damien Saulep-Easton, Jacqueline Flynn, Megan Lim, Tamsyn Van Rheenen*

### COMMENTS/ FEEDBACK?

Want to advertise an event to the precinct? Won an award or published a paper? We welcome your input, so let us know what you have to say! [ecr.AMREP@monash.edu](mailto:ecr.AMREP@monash.edu)

# Fresh Faces



**Name:** Renee Duncan  
**Position:** Postdoctoral Research Fellow  
**Department/School:** Centre for Virology / Burnet Institute  
**Renee's research:** CCR5 antagonists are a new type of anti-HIV-1 drug that stops the virus from entering cells. We have evidence to suggest that the ability of HIV-1 to infect host cells, in the presence of CCR5 antagonists relies on distinct interactions with a sulfated tyrosine region of CCR5. My project investigates the molecular mechanisms of HIV-1 interaction with CCR5 and to determine how this may influence the outcome of patients who are receiving these drugs as part of their clinical care.

## Want a few tips?

"PostdocTraining is for postdocs who want to be as effective and productive as possible in their current and future positions. The program is **purpose-built to help postdocs manage day-to-day challenges** with confidence and skill, while supporting them to plan and pursue their preferred careers successfully."

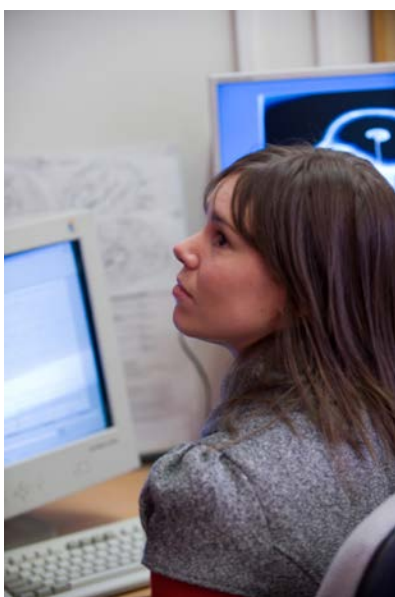
<http://postdoctraining.com/>

**Name:** Megan Lim  
**Position:** Postdoctoral Research Fellow  
**Department/School:** Burnet, Centre for Population Health  
**Megan's research:** I specialise in HIV epidemiology and sexual health. My primary research interest is investigating the use of new technologies to deliver sexual health promotion. I also work in surveillance of infections such as chlamydia and HIV and surveillance of sexual risk behaviours (for example through surveys at the Big Day Out music festival). I work in both Australia and the Asia-Pacific region.



JORGE CHAM © 2013

WWW.PHDCOMICS.COM



**Name:** Rebecca Segrave  
**Position:** Post-doctoral Research Fellow  
**Department/School:** Monash Alfred Psychiatry Research Centre, Central Clinical School  
**Rebecca's research:** Rebecca Segrave is a Clinical Neuropsychologist and NHMRC ECR Postdoctoral Research Fellow at the Monash Alfred Psychiatry Research Centre where she is a member of the Psychiatric Neurotechnology Team. She is a biological psychiatry researcher, and her work involves the combined application of neuroscience (such as EEG and fMRI), brain stimulation (such as DBS and tDCS) and neuropsychological techniques to better understand the neurobiology of major depression and develop improved treatment options for this condition.

# New ECR Funding Opportunities in 2013

## Australian Museum Eureka Prizes

Presented annually by the Australian Museum, the Australian Museum Eureka Prizes reward excellence in the fields of research & innovation, leadership & commercialisation, school science and science journalism & communication. Entries for the 2013 Australian Museum Eureka Prizes are now OPEN.

Here are some of the opportunities that are available for ECRs and young researchers:

**Emerging Leader in Science** - sponsored by 3M, this Eureka Prize awards \$10,000 to a scientist who has used their leadership skills to create impact inside their institution, amongst their peers, within their discipline or in the wider community. To be eligible you must be 35 years or younger or be no more than five years since being awarded your PhD, at the closing date of entries.

**Innovative Use of Technology** - sponsored by ANSTO, this Eureka Prize awards \$10,000 to an Australian individual, group or organisation who has used new or existing technology in an innovative way to significantly improve the outcome of their research.

**Outstanding Young Researcher** - sponsored by Macquarie University, this Eureka Prize awards \$10,000 for outstanding scientific research conducted by an individual or teams of early career researchers who are aged 35 years or younger.

**Promoting Understanding of Australian Science Research** – sponsored by the Australian Government, this Eureka Prize awards \$10,000 to a research scientist who has effectively communicated their research outcomes to the public within the last two years.

You may know someone worthy of nomination for the University of Technology, Sydney Eureka Prize for Outstanding Mentor of Young Researchers - which awards \$10,000 to an individual who has helped develop the next generation of Australia's scientific researchers.

Entries close **7 pm AEST Friday 3 May**.  
For more info, visit: <http://eureka.australianmuseum.net.au/enter>

## MONASH MENTORING SCHEME FOR WOMEN

Applications are now being accepted for the 2013 Monash University Mentoring Scheme for Women. The Scheme is open to both academic and professional female staff and aims to increase access to the learning and developmental opportunities provided by a mentoring relationship.

**Expressions of Interest close Friday, 22 March**

## AUSTRALIAN ACADEMY OF SCIENCE ECR AWARDS

Nominations are now open for the following Australian Academy of Science awards, which will be offered in **2014**: Honorific awards, early career research awards and travelling fellowships.

To find out more about these awards, visit: <http://www.science.org.au/awards/honorific-awards.html>. Forms and criteria are available under each individual award.

## Mock GRP @ ECR Retreat

**Thursday 26<sup>th</sup> September – Friday 27<sup>th</sup>**

Following the great success of 2012's AMREP-wide ECR retreat, this year will see the continuation of the format, bringing together researchers from across the AMREP campus.

This year, the retreat will include a mock Grant Review Panel, featuring a guest panel of senior researchers with extensive experience in grant review. This will be an exciting, interesting and surely eye-opening experience for ECRs to gain some insight into 'the other side' of the grant review system.

More info in the next issue of *ECR Times*.



*Congratulations to the following ECRs for their recent achievements!*

### Publications

Brew BJ, **Gray L**, Lewin S, Churchill M (2013). Is specific HIV eradication from the brain possible or needed? Expert Opinion on Biological Therapy 2013 Accepted

**Vincent FB**, Morand EF, Murphy K, Mackay F, Mariette X and Marcelli C. Anti-drug antibodies (ADAb) to tumour necrosis factor (TNF)-specific neutralizing agents in chronic inflammatory diseases: a real issue, a clinical perspective. Ann Rheum Dis 2012.

**Vincent FB**, Bourke P, Morand EF, Mackay F and Bossingham D. Focus on systemic lupus erythematosus in Indigenous Australians: toward a better understanding of autoimmune diseases. Intern Med J 2012 Nov 23.

Congratulations to **Sarah Holton** for her work on career research and implications for delayed motherhood. Her work has garnered extensive media attention.

Further congratulations to **Fabien Vincent** for press coverage of his project, focused on SLE in Indigenous Australians – a hot button issue in Australian Public Health Policy.

**Wilkins, Simon**, et al. "Insertion/Deletion Polymorphisms in the  $\Delta Np63$  Promoter Are a Risk Factor for Bladder Exstrophy Epispadias Complex." *PLoS genetics* 8.12 (2012): e1003070.

**Lee H, Hamilton JR**. The PAR1 antagonist, SCH79797, alters platelet morphology and function independently of PARs. *Thromb Haemost.* 2013 Jan 8;109(1):164-7.

### Awards and prizes

A BIG congratulations to **Jessica Mountford**, who was awarded her PhD in December 2012 and has taken a postdoctoral research position at the University of Western Australia. We wish her all the best.

**Lachlan Gray**: Burnet Prize for Infectious Diseases (1st Prize) for best judged poster, 24th Alfred Week Research Poster Display, Alfred Hospital, Melbourne, October 2012. \$250 cash prize.

**Hao Lu** received the Young Investigator Award at the Conference for Retrovirology and Opportunistic Infections 2013.

**Lachlan Gray**: Burnet Institute Travel Award, Geoffrey Connard Travel Fellowship 2012. \$2600 AUD

**Carolina Weller**: 1<sup>st</sup> Asia Pacific Clinical Epidemiology Evidence Based Medicine Conference – Oral Presentation Award.

**Carolina Weller**: 2012 Monash University School of Public Health and Preventive Medicine ECR research excellence award

**Carolina Weller**: 2012 School of Public Health and Preventive Medicine Travel Award.

### Grants

**Smitha Gregory**: one of only 38 recipients of the Cure Cancer Australia Foundation Grant.

**Sarah Prickett**: CIA on a project grant from the Monash Strategic Grant scheme commencing Jan 2013.

**Justin Hamilton**: (CIA) on NHMRC Project Grant. Defining the function of the thrombin receptor, PAR4, on human platelets.

**Lachlan Gray**: Ian Potter Foundation Travel Grant 2012. \$2000 AUD

**Rebecca Segrave**: Beyondblue Victorian Centre of Excellence in Depression and Anxiety, Early Career Researcher Award 2013 (funds awarded = \$97,598 over two years).

### ACBD

MAITHILI SASHINDRANATH  
[Maithili.Sashindranath@monash.edu](mailto:Maithili.Sashindranath@monash.edu)

### BURNET INSTITUTE

LACHLAN GRAY (CHAIR)  
[Lachlan.Gray@monash.edu](mailto:Lachlan.Gray@monash.edu)

MEGAN LIM (CO-SECRETARY)  
[lim@burnet.edu.au](mailto:lim@burnet.edu.au)

RENEE DUNCAN  
[rduncan@burnet.edu.au](mailto:rduncan@burnet.edu.au)

ELISHA HORAT (CO-SECRETARY)  
[elisha.horat@burnet.edu.au](mailto:elisha.horat@burnet.edu.au)

JACQUELINE FLYNN  
[jflynn@burnet.edu.au](mailto:jflynn@burnet.edu.au)

SARAH CHARNAUD  
[charnaud@burnet.edu.au](mailto:charnaud@burnet.edu.au)

### IMMUNOLOGY

DAMIEN SAULEP-EASTON  
[damien.easton@monash.edu](mailto:damien.easton@monash.edu)

### MEDICINE

HAO LU  
[Hao.Lu@monash.edu](mailto:Hao.Lu@monash.edu)

### MONASH ALFRED PSYCHIATRY RESEARCH CENTRE

STUART LEE  
[S.Lee@alfred.org.au](mailto:S.Lee@alfred.org.au)

TAMSYN VAN RHEENEN  
[tamsyn.van-rheenen@monash.edu](mailto:tamsyn.van-rheenen@monash.edu)

REBECCA SEGRAVE  
[rebecca.segrave@monash.edu](mailto:rebecca.segrave@monash.edu)

BERNADETTE FITZGIBBON  
[bernadette.fitzgibbon@monash.edu](mailto:bernadette.fitzgibbon@monash.edu)

### SPHPM ECR

LAVINIA TRAN  
[Lavinia.Tran@monash.edu](mailto:Lavinia.Tran@monash.edu)

CAROLINA WELLER  
[Carolina.Weller@monash.edu](mailto:Carolina.Weller@monash.edu)