



# SENSORY SCIENTIFIC EXHIBITION

We invite members of the blind and low vision community to our Sensory Scientific Exhibition and Discovery Day at the Monash Biomedicine Discovery Institute.

## Enhance your life through discovery

This exhibition is specifically designed for a blind and low vision audience, with tactile, sound, olfactory and low vision accessible displays and exhibits. Learn about cells and cell division, tumor growth and invasion, new and existing cancer treatments and more.

*This is a free event but registration is essential.*

---

**When** Friday 6 December,  
8.45am - 12.45pm

---

**Where** G54 Learning and Teaching Building,  
19 Ancora Imparo Way,  
Monash University, Clayton

---

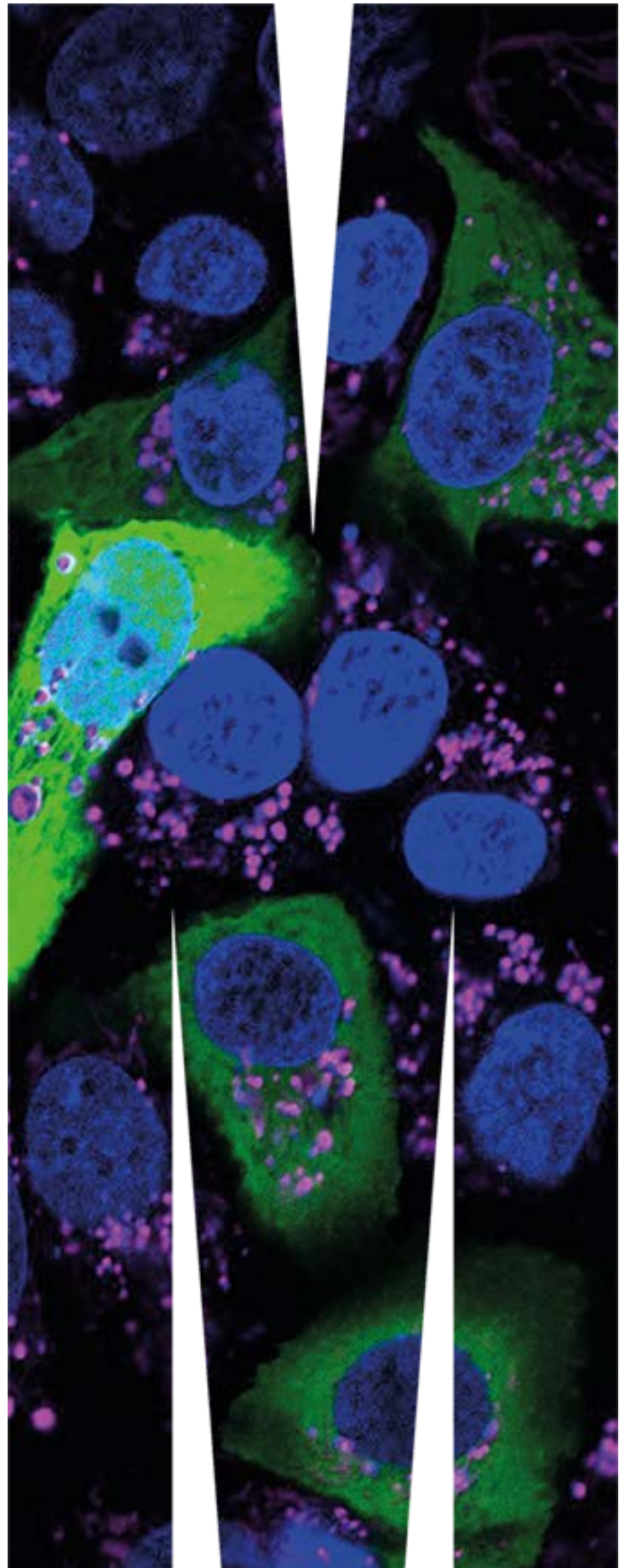
**Register** [sensoryscientificexhibition  
2019.eventbrite.com](https://sensoryscientificexhibition2019.eventbrite.com)

---

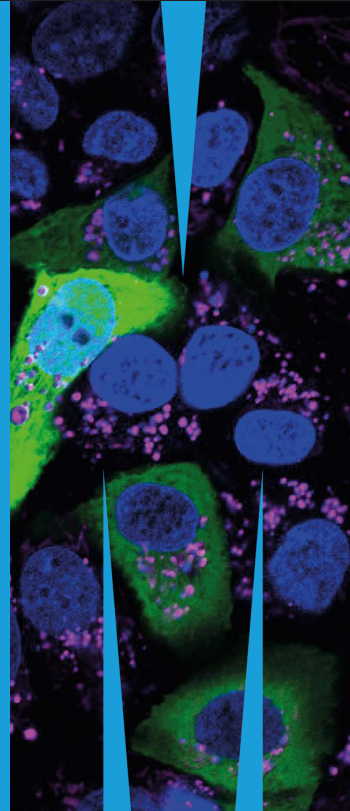
**Enquire** [BDI-SSD@monash.edu](mailto:BDI-SSD@monash.edu)

---

[monash.edu/discovery-institute](https://monash.edu/discovery-institute)



# SENSORY SCIENTIFIC EXHIBITION AND DISCOVERY DAY



## Event details and important information

We want to ensure you are able to make the most of your day with us. Please find below event details and important accessibility information, including transport and parking.

## PROGRAM OF EVENTS

Registration opens at 8.45am for a 9.30am start and the event concludes at 12.45pm. There will be a special presentation by Professor Roger Daly, Head of the Monash BDI's Department of Biochemistry and Molecular Biology and Cancer Program, followed by morning tea and interactive breakout sessions. The sessions will include hands-on activities such as:

- 2D and 3D models
- Tactile poster creation
- Interactive manipulatives

## GETTING THERE

The event will be in G54, 19 Ancora Imparo Way, Monash University, Clayton campus. See map attached for directions. There are many ways to get to and from Monash University, including public transport and driving. If you are driving, please provide us with your car registration so that we can ensure you will have a parking space. Please note a \$12 parking fee will apply. For more information, visit [monash.edu/people/transport-parking](http://monash.edu/people/transport-parking).

## ACCESSIBILITY

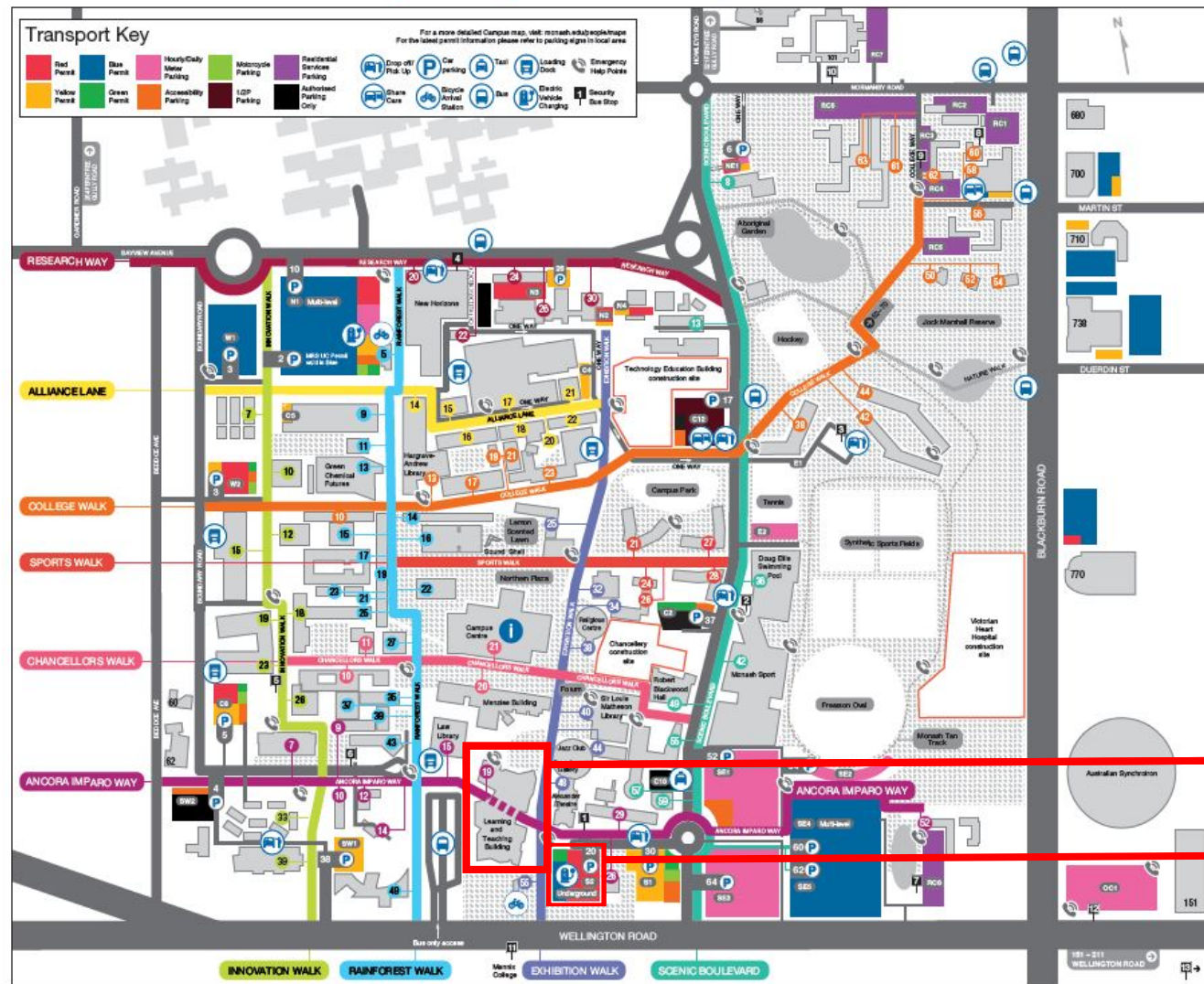
- You are welcome to bring your guide dog with you
- A carer, family member or friend is welcome to attend with you, however they will also need to complete a registration form to ensure we can optimise your experience in the various group activities
- Volunteers will be present on the day for assistance.

Thank you to our major sponsors, including:

## Contact Us

Monash BDI  
T: +61 3 9902 9656  
E: [BDI-SSDD@monash.edu](mailto:BDI-SSDD@monash.edu)  
[www.monash.edu/discovery-institute](http://www.monash.edu/discovery-institute)

# Monash University Clayton campus



## SENSORY SCIENTIFIC EXHIBITION AND DISCOVERY DAY

Date: Friday 6 December  
 Time: 8:45am - 12:45pm  
 T: +61 3 9902 9656  
 E: [BDI-SSDD@monash.edu](mailto:BDI-SSDD@monash.edu)  
 Register: [sensoryscientificexhibition2019.eventbrite.com](http://sensoryscientificexhibition2019.eventbrite.com)

Event located here  
 (19 Ancora Imparo Way)

Recommended parking  
 (South Two Underground,  
 20 Ancora Imparo Way)