

Nurses and midwives

Most common settings in which psychological injuries occur



53.6%

Hospitals



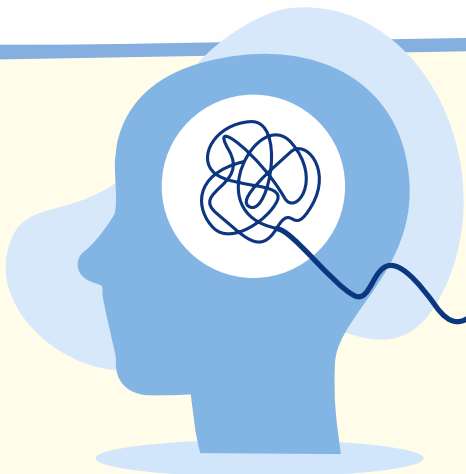
36.6%

Residential care services

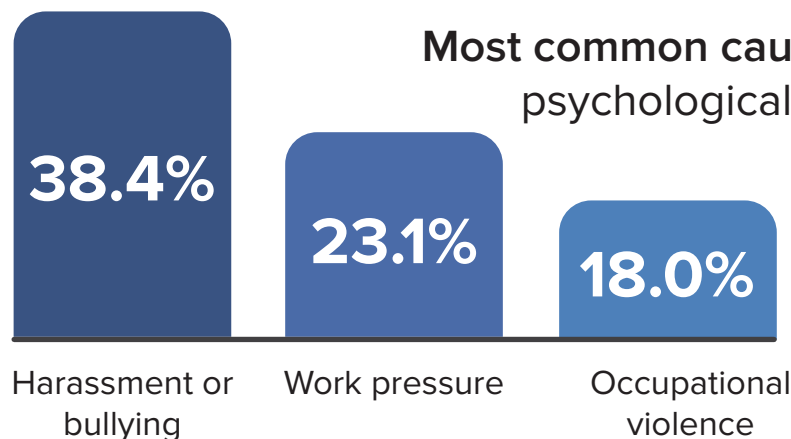
Most common type of psychological injury

Stress and/or anxiety

63.8%



Most common causes of psychological injury



8.0 weeks

Median duration of time off work for workers with psychological injury

is the **shortest duration** of all occupational groups



17.8%

of all lost time due to psychological injury

Nurses and midwives have the **highest growth** in the number of psychological injury claims

150.6%

Growth in number of psychological injury claims between 2013-2015 and 2019-2021

7.8%

Workers' compensation claims that are for psychological injury

3212

Psychological injury claims over the past nine years

The **largest** number of any occupational group

To find out more visit

