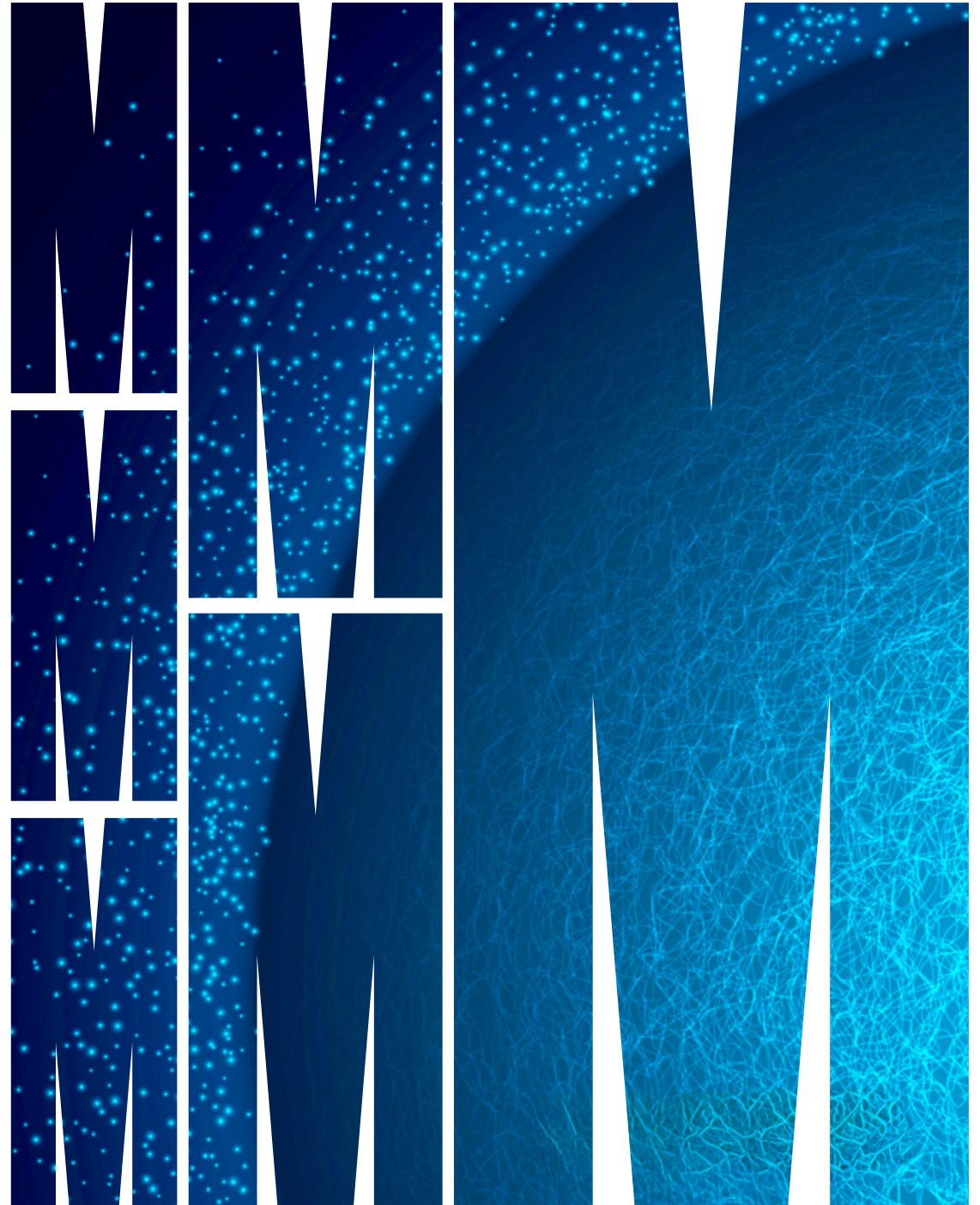


HIGHLIGHTS  
REPORT  
2023 AND 2024

# HEALTH ECONOMICS GROUP



MONASH  
University



# CONTENTS

<b>Director's Report</b>	<b>3</b>	<b>Our activity</b>	<b>15</b>
<b>Message from the Head of School</b>	<b>4</b>	Research Fellowships	15
<b>Who we are</b>	<b>5</b>	Media Highlights	15
<b>2023 snapshot</b>	<b>6</b>	Awards and Prizes	16
<b>2024 snapshot</b>	<b>7</b>	Visitors	17
<b>Research Programs</b>	<b>8</b>	Invited and keynote presentations	18
Mental health	8	Seminar series	19
Ageing and dementia	9	Committees and advisory groups	20
Health preference research	10	<b>Research grants, tenders and consultancies</b>	<b>21</b>
Diabetes and cardiovascular disease	10	Funding for research projects awarded in 2023	21
Acute and critical care	11	Funding for research projects awarded in 2024	26
Sexual health	11	<b>Research Outputs</b>	<b>31</b>
<b>Our teaching</b>	<b>12</b>	2023 Publications	31
<b>Our PhD program</b>	<b>13</b>	2023 Publicly available research report	34
Spotlight on Dr Yared Belay	14	2024 Publications	35
		2024 Publicly available research report	40
		<b>Contact us</b>	<b>41</b>

## ACKNOWLEDGEMENT OF COUNTRY

We acknowledge and pay our respects to all Aboriginal and Torres Strait Islander Peoples as the sovereign Traditional Owners of the various Countries on which we walk, live, work and raise our children.

We pay our respects to their Elders past and present, and extend that respect to their children who are the Elders of tomorrow.

We acknowledge the stories, traditions and living, continuous cultures of Aboriginal and Torres Strait Islander peoples on this land and commit to building a brighter future together.

And we acknowledge the importance of people being raised with connections to culture, community, and family.

Always was, always will be.

# DIRECTOR'S REPORT

It is with great pride that I reflect on the **remarkable achievements** of the Health Economics Group (HEG) over 2023 and 2024.



**Professor Cathy Mihalopoulos**

Head, Health Economics Group  
School of Public Health and Preventive Medicine,  
Monash University

Our team has continued to grow in size and impact, with over 80 active research projects spanning mental health, ageing and dementia, health preferences, diabetes and cardiovascular disease and other health areas. In a hub and spoke model we also have close affiliations with acute and critical care as well as sexual health.

We secured over \$10.9 million in research income across both years, contributing to projects with a total value exceeding \$91 million. Our research excellence was recognised through numerous prestigious fellowships and awards, including National Health and Medical Research Council (NHMRC) and Australian Research Council (ARC) fellowships, and accolades from the Australian Clinical Trials Alliance and Mental Health Australia.

Our publication output was exceptional, with 145 peer-reviewed journal articles and multiple high-impact reports. Notably, our work influenced national and international policy, including (but not limited to) evaluations for the World Health Organization and the Australian Government.

HEG's commitment to education was evident in the successful launch of two postgraduate units and the supervision of 6 Monash led PhD candidates, several of whom received awards for their research. We also delivered targeted training to government staff and hosted 22 seminars featuring local and international experts.

Our collaborative ethos was strengthened through visits from international scholars and collaborative projects with prominent institutions and partners. The launch of the NHMRC funded Connecting for Better Health project exemplifies our dedication to addressing complex public health challenges through inclusive, evidence-based approaches.

As we look ahead, I am confident that HEG will continue to lead in generating high-quality economic evidence, shaping policy, and improving health outcomes for all.

## \$10.9M+

in research income  
across 2023 and 2024

## \$91M+

total value of projects  
contributed to

## 22

seminars hosted

# MESSAGE FROM THE HEAD OF SCHOOL

It is a pleasure to reflect on the **outstanding contributions** of the Health Economics Group (HEG) over the past two years.



**Professor Sophia Zoungas**

Head, School of Public Health and Preventive Medicine,  
Monash University

The breadth and depth of HEG's work continues to elevate the School of Public Health and Preventive Medicine's reputation for excellence in research, education, and policy impact.

HEG's commitment to addressing real-world health challenges is evident in its diverse portfolio – spanning mental health, ageing and dementia, health preference research, diabetes and cardiovascular disease, acute and critical care and sexual health. The group's leadership in evaluating national programs, including early intervention services and telehealth models, demonstrates its capacity to shape system-wide reform through rigorous, evidence-based approaches.

In the education portfolio, HEG developed health economics postgraduate units and short-courses that provide a solid foundation in theory and application to healthcare financing and resource allocation.

Importantly, HEG has embedded lived experience and community engagement into its research frameworks, ensuring that economic evaluations are not only methodologically sound but also socially responsive. This is particularly evident in projects tackling loneliness, dementia care, and youth mental health – areas where HEG's work is driving meaningful change.

The group's success in securing competitive funding, publishing high-impact research, and mentoring emerging scholars reflects a culture of collaboration and innovation. Their growing influence in national and international policy forums underscores the strategic importance of health economics in shaping equitable and sustainable healthcare systems.

As Head of School, I am proud of HEG's achievements and its role in advancing our mission to improve health outcomes through research excellence. I look forward to supporting the group's continued growth and impact in the years ahead.

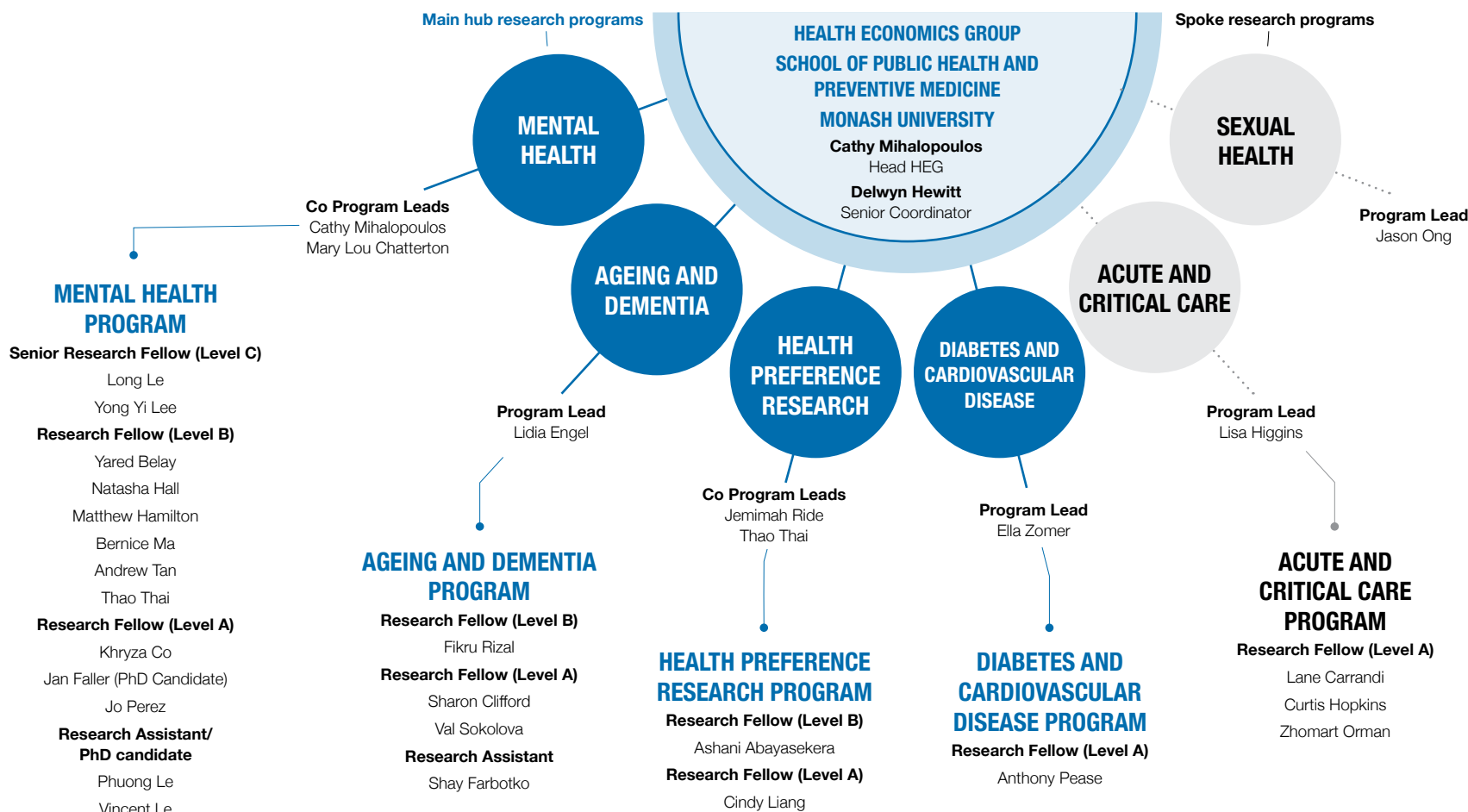
# WHO WE ARE OUR STRUCTURE

## Vision

Harnessing health economics to influence policy and practice to improve health and wellbeing for all.

## Mission

To generate high-quality economic evidence, provide training in health economics, and build strong collaborative partnerships that contribute to better health and wellbeing for all.



# 2023 SNAPSHOT

4

Programs of research

2

Research fellowships awarded

6

HEG-led PhDs

56

Published journal articles

22

Staff

2

Awards and prizes

4

Other institution-led PhDs

\$5.1M

HEG research income

\$3.7m: Category 1 grants (n=19)  
\$1.4m: Category 2-4 grants (n=14)

>60

Active research projects

1

Visiting academic

2

Postgraduate units chaired

\$43.7M

Total value of grants where HEG was a partner

These figures represent 'Hub' data only. More information is available about the 'spokes' at [Sexual Health](#) and [Acute and Critical Care](#)

# 2024 SNAPSHOT

4

Programs of research

1

Research fellowship awarded

6

HEG-led PhDs  
5 other institution-led PhDs

23

Staff

4

Awards and prizes

3

PhDs awarded

>80

Active research projects

2

Visiting academics

2

Postgraduate units chaired

These figures represent 'Hub' data only.  
More information is available about the 'spokes' at [Sexual Health](#) and [Acute and Critical Care](#)

89

Published journal articles

\$5.8M

HEG research income \$2.5m: Category 1 grants (n=17)  
\$3.3m: Category 2-4 grants (n=18)

\$48M

Total value of grants where HEG was a partner

# RESEARCH PROGRAMS

## INTRODUCTION

During 2023 the Health Economics Group (HEG) conducted **more than 60** active research projects, and **more than 80** throughout 2024, across a range of research programs.



## MENTAL HEALTH

The Mental Health economics program, led by [Professor Cathy Mihalopoulos](#) and [Dr Mary Lou Chatterton](#), transitioned to Monash University in early 2022 with a then team of seven. The program aims to provide high quality evidence to help ensure mental health care provision is efficient, effective and appropriate to individual and broader community needs.

One of our goals is to disseminate high-quality economic evidence, and the team were authors on 79 peer reviewed publications and 1 publicly available report between 2023 and 2024. This included contributions from PhD students and numerous publications with our valued collaborators.

The team has enjoyed substantial grant success, being chief and co-investigators on 18 newly funded category 1 grants with a total funding value of \$44 million between 2023 and 2024. Our program has also substantially expanded its capacity and expertise in program evaluation since joining Monash University. The team has been involved in 7 successful tenders with a total funding value of \$4.5 million. Funding organisations include the World Health Organization and Department of Health and Aged

Care, including leading the evaluations of two national important mental health initiatives including the Medicare Mental Health Centres and Phone Service program and the National Early Intervention Service evaluation. This success led to the team doubling in size to 14 members by 2024.

In [2023](#), we were delighted to have been awarded one of the four [National Health and Medical Research Council Targeted Call for Research: Loneliness, social isolation and chronic disease management 2022](#) grants worth \$1.7M. The project, known as [Connecting for Better Health](#) (C4BH), aims to support decision-makers in implementing equitable and cost-effective strategies to reduce loneliness, social isolation and the burden of chronic disease in Australia. The project comprises 8 interlinked sub-studies, and is guided by a Steering Committee with project partners and a Community Advisory Group, ensuring diverse perspectives and community input throughout its implementation.

In 2024, [Dr Long Le](#) was awarded a Medical Research Future Fund (MRFF) funded project titled '[Improving Telehealth Delivered Mental Health Care for Rural and Remote Areas](#)'. This project aims to bridge an equity gap in health service



delivery to rural and regional Australians, by investigating successful models of telehealth-delivered mental health care.

A large component of our research comprises more than 35 ongoing trial based economic evaluations. Our work has been recognised with awards such as the inaugural Australia Clinical Trials Alliance (ACTA) Excellence in Trial-based Health Economics [award](#) in 2023, the Barwon Health best paper of the year award 2024, and the Mental Health Australia General Clinical Trials Network ([MAGNET](#)) [trial of the year 2024](#).

## AUSTRALIAN GOVERNMENT SUBMISSION:

In 2023, HEG contributed to a Submission to The Treasury's consultation on the wellbeing budget; [Measuring what matters](#).

## AGEING AND DEMENTIA

Led by [Dr Lidia Engel](#), the Ageing and Dementia Team had productive years during 2023-2024, advancing research on outcome measurement and quality of life (QoL) in older adults and their informal carers.

### WELCOMING OUR FIRST PHD STUDENT

The team was delighted to welcome its first PhD student, [Jan Faller](#), in October 2023. Supported by a Research Training Program (RTP) and a EuroQol Research Foundation PhD scholarship, Jan is investigating the measurement of carers' quality of life using the EQ-5D.

### ROUTINE QOL MEASUREMENT IN RESIDENTIAL AGED CARE

Following the April 2023 expansion of the National Aged Care Mandatory Quality Indicator (QI) Program, the team completed a two-year EuroQol-funded study on the feasibility of collecting routine QoL data in residential aged care. Key outcomes include:

- Insights from aged care staff, residents, and family on benefits, challenges, and [feasibility](#) of QoL measurement.
- Evaluation of the [EQ-HWB's](#) suitability for aged care settings.
- Evidence supporting the [face validity](#) of four preference-weighted QoL measures.
- Lead investigator Lidia Engel presented psychometric assessments of these measures at the 41st EuroQol Plenary in the Netherlands.

## MEASURING AND VALUING INFORMAL CARER OUTCOMES

The team's work on informal carer outcomes led to key achievements:

- Lidia Engel's involvement in the SHEER Task Force, contributing to published [guidelines](#) on caregiver health spillovers in cost-effectiveness research.
- A study funded by Dementia Australia estimating the monetary value of informal dementia care, published in [Value in Health](#) and featured on ABC's [Conversation Hour](#).
- A [EuroQol webinar](#) in July 2024 on measuring carer outcomes using EQ-5D, with contributions from [Valeriia Sokolova](#), Lidia Engel and Jan Faller. This webinar featured recent [work](#) conducted by Valeriia Sokolova on measuring informal carer outcomes using the EQ-5D-5L.

### ADVANCING QOL RESEARCH IN DEMENTIA

The team remains committed to advance research on outcome measurement in the context of dementia, with recent work providing further evidence on the importance of [proxy perspectives](#). Lidia Engel continues to collaborate with the German Center for Neurodegenerative Diseases (DZNE), examining [discrepancies between self- and proxy-rated](#) QoL in people living with dementia and [accounting for fluctuations](#) when measuring QoL of people with dementia.

## Grants

- Two MRFF grants supporting the [MOVE Together](#) project.
- Lidia Engel was an AI on the 2023 TCR Improving Infection Prevention and Control in Residential Aged Care Homes.
- Lidia Engel and Valeriia Sokolova partnered with Healthcare Management Advisors to evaluate the National Continence Program and Chronic Wounds Consumables Scheme.
- 11 grants by the EuroQol Research Foundation to undertake further outcome measurement work.



## HEALTH PREFERENCE RESEARCH

The Health preference research program, led by [Dr Jemimah Ride](#) and [Dr Thao Thai](#), launched in mid 2023 with the remit to examine choices and decision making that affect health, healthcare, and health policy. Highlights for 2023-2024 include:

- Program co-lead Dr Jemimah Ride was awarded an [Australian Research Council Discovery Early Career Research Award \(DECRA\) fellowship](#) in which she will be using discrete choice experiments to identify ways to incentivise employers to take meaningful action on workplace mental health.
- Dr Ride is a co-investigator on the successful MRFF Million Minds Mental Health Research grant led by HEG's [Dr Long Le](#) and in 2024 commenced work on the preferences of consumers, GPs and psychologists to help find ways to increase uptake of telehealth services for mental health care among people living in rural and remote Australia.
- Program co-lead Dr Thao Thai has had multiple successes leading grants funded by the EuroQol group to investigate a variety of aspects of quality of life research, including
  - Head-to-Head Comparison of the Psychometric Performance of the EQ-HWB-S, EQ-5D-5L, Re-QoL.
  - Testing a modified version of the EQ-HWB-S among the general public in Australia.
  - EQ-HWB in Culturally and Linguistically Diverse Background Communities.
- The Health preference research program hosted a [webinar](#) for the School of Public Health and Preventive Medicine (SPHPM) to introduce the method of discrete choice experiments and how they can be used in public health research.
- Dr Ride led the development of the [DIRECT reporting checklist](#) for discrete choice experiments in health, which attracted international attention and has been implemented into multiple leading journals as part of routine reporting requirements for these studies.
- Dr Thai led a [paper](#) published in the prestigious journal *Health Economics* that introduced the methodological innovation of the partial choice set design for discrete choice experiments to reduce cognitive burden.
- The team applied a discrete choice experiment to develop an [Australian Value Set for the Recovering Quality of Life - Utility Index](#) (ReQoL-UI), reflecting the preferences of the Australian population to enable the calculation of quality-adjusted life-years from the ReQoL-UI for use in cost utility analysis of mental health interventions in Australia.



## DIABETES AND CARDIOVASCULAR DISEASE

The Diabetes and Cardiovascular Disease Program, led by [Dr Ella Zomer](#), focuses on quantifying the burden of disease and assessing the economic value of emerging technologies and pharmacological interventions in diabetes and cardiovascular disease.

The program experienced a highly productive 2023-2024, with notable achievements including:

- Co-investigator on several successful grants including an *MRFF Consumer-Led* grant aimed at improving self-efficacy and health literacy through patient education to prevent recurrent heart events; an *MRFF Clinician Researchers* grant focused on optimising chest pain management pathways for patients in rural and remote areas; an *MRFF Nurses, Midwives and Allied Health* grant, evaluating the clinical and cost effectiveness of heart failure nurse practitioners in primary care through a randomised controlled trial.
- Contributing as a co-investigator to the Stroke Foundation's commissioned report "[Economic Impact of Stroke Report 2024](#)", leading the analysis on the productivity effects using a novel metric developed by Ella Zomer – the productivity-adjusted life year (PALY).



- Co-leading, in collaboration with Harvard University, the Health Economics research program for the Rio Tinto Children's Diabetes Centre: A Breakthrough T1D Centre of Excellence. This initiative focuses on developing advanced economic frameworks that capture the full societal costs of type 1 diabetes; enhancing equitable access to new therapies and informing policy decisions; identifying disparities in technology and pharmacotherapy use; quantifying the impact of type 1 diabetes on productivity and education outcomes.

The program maintains a broad network of active collaborations, including partnerships with the Baker Heart and Diabetes Institute, Victorian Heart Hospital, Harvard University, University of Western Australia, University of Adelaide, and multiple Schools/Faculties within Monash University.

## ACUTE AND CRITICAL CARE

It was a successful 2023-2024 period for the [ANZIC-RC Health Economics Program](#), led by [Dr Lisa Higgins](#). Excitingly, the program gained two new PhD students, and an additional six PhD students with a health economics component to their research. In 2023, the program conducted a half-day health economics course alongside the ANZICS Clinical Trials Group at the Annual Scientific Conference in Noosa. This course was attended by 31 clinicians and researchers, was very well received and with future courses currently being planned.



Positively, the program was successful for a number of grants including an *MRFF Frontiers* grant for clinical trials of therapeutics to protect the human heart (in collaboration with the University of Queensland); an *MRFF Clinical Trials Activity* grant investigating driving pressure versus tidal volume-limited ventilation for acute respiratory failure; and a *NHMRC Clinical Trials & Cohort Studies* grant for prophylaxis against ventilator-associated infections in neurologically injured ICU patients (in collaboration with The George Institute). Also noteworthy was [Lane Carrandi's](#) Monash Warwick Alliance (MWA) PhD travel grant.



Collaboration and fostering relationships remain integral to the program's work. The MWA is a testament to this, with Dr Higgins and Lane Carrandi appointed as MWA associates. The collaboration commenced in 2023 with Dr Higgins as the Principal Investigator on the MWA Activation Funded project – *Applying health economics in implementation science: Methodological development to support health care innovation*. The ongoing collaboration reinforces the immense value associated with the stream's interdisciplinary efforts in health economics and implementation science.

Notable awards include Dr Higgins' American Thoracic Society Critical Care International Early Career Achievement Award (2024), and the Faculty Publication Prize (2024) for a publication on REMAP-CAP long-term outcomes (*JAMA*, 2023).

The program saw a number of publications this period, with robust collaboration and contributions from staff and PhD students, including 5 well-cited publications in *JAMA* and publication of "[Economic evaluations for intensive care unit randomised clinical trials in Australia and New Zealand: Practical recommendations for researchers](#)" in *Australian Critical Care*.

Ultimately, the program continues to grow, deliver and promote the inclusion of economic analyses in intensive care clinical trials.

## SEXUAL HEALTH

Led by [Professor Jason Ong](#), the HIV/STI Economics and Health Preference group had a productive 2023 and 2024 with 108 publications in total. This included 13 publications in the prestigious *Lancet* journals.

The main highlights included our work with the WHO to create a vaccine value profile for gonorrhoea (i.e. investment case for gonorrhoeae vaccination), determining the preferences of HIV prevention strategies for Asian-born men who have sex with men living in Australia, and conducting several Nudgeathon events to: (1) improve awareness about HIV pre-exposure prophylaxis (PrEP), (2) design a PrEP starter pack and (3) increase uptake of meningococcal vaccinations in high school children. A nudgeathon is a hackathon-like event where a diverse group of participants work in teams to generate solutions using behavioural economic principles.

The program was fortunate to obtain two NHMRC Centre of Research Excellence (CRE) Grants: 1) CRE for the control of *Neisseria gonorrhoea*; and 2) CRE for Stronger Investments in Infectious Diseases (STRIDE).

Warm congratulations to the five PhD students that completed their degree.



Further information about the Melbourne Sexual Health Centre can be found [here](#).

# OUR TEACHING

## HEALTH ECONOMICS POSTGRADUATE UNITS

The HEG team developed and delivered two new units within the SPHPM postgraduate curriculum. Introductory Health Economics ([MPH5220](#)) and Determining value for money in health care ([MPH5221](#)) were initially offered in 2023.

*Introductory Health Economics* covers the key economic concepts (i.e. supply, demand, markets, market failure, health insurance) and their relevance to healthcare. *Determining value for money in health care* is focussed on the concepts, methods and application of economic evaluation within healthcare. Both are electives within the Master of Public Health (MPH) degree program, and required units for MPH degree students with a specialisation in Health Economics.

We are looking to grow our health economics teaching into the future including the development of more formal Masters level course units but also an offering of short-courses across different health economics areas. So for those who are keen to develop your health economics expertise please watch this space.

HEG offered an additional one-day workshop focusing on economic evaluation to approximately 80 staff from the Victorian Department of Health in 2024.



Further information about studying with us can be found [here](#).



# OUR PHD PROGRAM

In 2023 and 2024, the HEG team provided supervisory input to PhD candidates within HEG and across a range of other settings, including elsewhere in SPHPM, Deakin University, University of Melbourne, and Monash faculties including Pharmacy and Pharmaceutical Sciences.

## SIX PHD CANDIDATES WERE PART OF HEG DURING THIS PERIOD

### Yared Belay

Economic evaluation of treatment strategies for depression in Ethiopia.

### Dai (Vincent) Le

The economic costs of child sexual abuse and the cost-effectiveness of the current school-based prevention program.

### Jan Faller

Incorporating carer outcomes in health economic evaluation using the EQ-5D (EuroQol Research Foundation PhD).

### Phuong Le

Assessing cost-effectiveness of sleep interventions in treatment of depression within the Australian context.

### Matthew Hamilton

An open source computational model of systems shaping the mental health of young people.

### Tan Nguyen

Assessing cost-effectiveness on oral health prevention interventions (NHMRC PhD).



HEG PhD students were accepted to present at the inaugural SPHPM PhD conference, showcasing the exceptional work of PhD students, as well as presenting at various conferences and seminars. They were also successful in publishing their PhD work in high quality journals and contributed to the outputs of HEG through roles on other research projects.



## SPOTLIGHT ON DR YARED BELAY

HEG is delighted to congratulate [Dr Yared Belay](#) on the submission of his thesis in December 2024. Yared started his PhD in 2022, under the supervision of Professor Cathy Mihalopoulos and Drs Lidia Engel and Yong Yi Lee while they were at Deakin University. Yared moved across to HEG with the team in 2023. His original undergraduate study was in Pharmacy and he also holds a Master's in Pharmacoepidemiology and Social Pharmacy, both in Ethiopia. Close on the heels of his thesis submission, Yared joined HEG as a Research Fellow, where he now contributes to research in the public health genomics program – focusing on the economic evaluation of population genomic screening with Professor Paul Lacaze – and continues to be involved in studies focusing on economic evaluations of mental health interventions in the Australian context with Professor Cathy Mihalopoulos. During his PhD candidature, Yared published three papers as first author in Q1 journals and also published work with the HEG team and international collaborators. In 2024, Yared won the People's Choice award at the Faculty Three-Minute Thesis (3MT) competition and was runner-up at the Monash 3MT Wildcard.

## THESIS TITLE

Economic evaluation of treatment strategies for depression in Ethiopia

## SUPERVISORS

Professor Cathy Mihalopoulos,  
Dr Lidia Engel, Dr Yong Yi Lee

## PHD SUMMARY

Major depressive disorder is a significant health issue worldwide, particularly in low- and middle-income countries like Ethiopia. This thesis uses quality-of-life measurement methods and economic modelling to help identify cost-effective treatment strategies for depression care in Ethiopia. It highlights concerns with the most commonly used quality-of-life measure, the EQ-5D-5L, particularly when combining anxiety and depression in a single question. This suggests the need for alternative health outcome measures tailored to Ethiopia's mental health context. The model-based economic evaluation identified psychotherapy as a cost-effective option for depression care in Ethiopia, with combined psychotherapy and drug therapy emerging as another cost-effective alternative.



# OUR ACTIVITY

## RESEARCH FELLOWSHIPS

Congratulations to the following HEG staff who won highly competitive fellowships:



**[Dr Lidia Engel](#)**

**[NHMRC Emerging Leadership Level 1 Fellowship](#)** to enhance the quality-adjusted life year (QALY) framework in older adults, promoting fairer and socially accepted funding decisions for older adults.



**[Dr Jemimah Ride](#)**

**[ARC Discovery Early Career Research Award](#)** to use economic methods to investigate ways to encourage employers to make meaningful investments in employee mental health and create mentally healthy workplaces.



**[Dr Long Le](#)**

Monash University, Faculty of Medicine Nursing and Health Sciences  
**[Future Leader Postdoctoral Fellowship](#)**: 'A Vision to Reform Better Access Program for Mental Health Services in Australia'.

## MEDIA HIGHLIGHTS

HEG have contributed to policy discourse surrounding government and other sector decision making across a range of platforms including:

### 2023

[Dr Mary Lou Chatterton](#) and [Professor Cathy Mihalopoulos](#) published a viewpoint in [The Conversation](#) on 1 May 2023 titled 'The tricky economics of subsidising psychedelics for mental health therapy'.

[Dr Lidia Engel](#) was interviewed for [The Conversation Hour podcast](#) regarding her Informal dementia carers survey.

### 2024

[Dr Natasha Hall](#) was interviewed on **Channel 10's 'The Project'** (4,093 views) and on **Nine News** about our study that found kids are turning to un-prescribed diet pills after being inundated with TikTok videos of dieting creators. The paper titled '[Global Prevalence of Adolescent Use of Nonprescription Weight-Loss Products](#):'

[A Systematic Review and Meta-Analysis'](#) included co-authors [Dr Long Le](#) and Professor Cathy Mihalopoulos.

Our **[Connecting for Better Health website](#)** was proudly launched in 2024. This National Health and Medical Research Council funded project titled 'Towards a holistic priority setting approach for chronic disease management to tackle loneliness and social isolation in Australia' is led by Professor Cathy Mihalopoulos. This important project aims to provide decision-makers with the knowledge and tools to successfully implement acceptable, targeted, equitable and cost-effective strategies for tackling loneliness and social isolation as part of a more holistic approach to chronic disease management in Australia.

## AWARDS AND PRIZES

Congratulations to the following HEG staff and PhD students on winning prestigious awards and prizes.

### 2023

Dr Yong Yi Lee, Professor Cathy Mihalopoulos, Dr Mary Lou Chatterton and colleagues: **Australian Clinical Trials Alliance HEAT Excellence in Trial Based Health Economics Award** for the economic evaluation of the [Target-D Program](#).

Delwyn Hewitt: **SPHPM Head of School's Outstanding Contribution Award**.

Phuong Le, PhD Candidate: **HILDA Survey Research Conference Best Poster Prize**.

Tan Nguyen, PhD Candidate: **Investigator Award in Preventive and Community Dentistry 2023**, International Association for Dental, Oral and Craniofacial Research, Australia and New Zealand Division.

### 2024

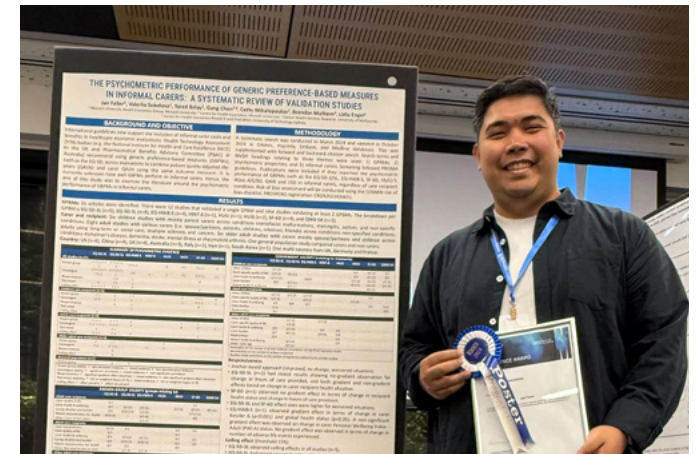
Dr Mary Lou Chatterton, Professor Cathy Mihalopoulos and colleagues: **MAGNET Trial of the Year 2024** award for the Ketamine for Adult Depression (KADS) trial: Ketamine therapy amongst patients with treatment resistant depression.

Dr Mary Lou Chatterton and Jo Perez: **Barwon Health Best Paper of the Year Award** for the [publication](#) 'Clinical and cost-effectiveness of remote-delivered, online lifestyle therapy versus psychotherapy for reducing depression: results from the CALM non-inferiority, randomised trial'.

PhD candidate Yared Belay: Faculty of Medicine Nursing and Health Sciences **People's Choice Award Three Minute Thesis (3MT) final**.

PhD candidate Jan Faller: **Best poster prize** at the inaugural SPHPM PhD conference.

- Tan Nguyen, PhD Candidate: **6th Annual Cost-Effectiveness Analysis Paper of the Year Award**, Tufts Medical Center – Center for the Evaluation of Value and Risk in Health: 'Modeled health economic and equity impact on dental caries and health outcomes from a 20% sugar sweetened beverages tax in Australia'.
- **Advocacy Award 2024**, Public Health Association of Australia, Victorian Branch.
- **Colgate Oral Health Research Award 2024**, International Association for Dental, Oral and Craniofacial Research. The purpose of the award is to recognise a body of meritorious research by a member of the IADR Oral Health Research Group, with preference given to a Dental Hygienist.
- **Colgate Poster Award 2024, Senior Category**, Runners Up. Project titled 'Economic evaluation of dental preventive interventions using a priority-setting approach in Australia'. International Association for Dental, Oral and Craniofacial Research, Australia and New Zealand Division.



Jan Faller



Tan Nguyen

## VISITORS

We warmly welcomed visitors to HEG throughout 2023 and 2024.

### ASSOCIATE PROFESSOR FILIPA SAMPAIO, UPPSALA HEALTH ECONOMICS/CHAP, UPPSALA UNIVERSITY, SWEDEN

Associate Professor Filipa Sampaio, from Uppsala Health Economics/CHAP at Uppsala University, Sweden, visited HEG from 17th October to 21st November 2024. During this time, she engaged in a meaningful exchange of ideas, particularly focusing on economic evaluation in mental health. The visit provided an invaluable opportunity to learn from the team's expertise and gain new perspectives on health economics research. Filipa also greatly appreciated the mentorship of Professor Cathy Mihalopoulos, who generously shared insights on building a collaborative research group and securing funding for impactful projects. This experience deepened connections and reinforced a shared commitment to advancing mental health research. Reflecting on her time with HEG, Filipa shared that the team's exceptional hospitality and dedication to improving mental health outcomes have left a lasting impression, making HEG a truly inspiring place to collaborate.

### DR HARISH RAJ NARANDARAN, MINISTRY OF HEALTH, MALAYSIA

Dr Harish Raj Narandaran from the Ministry of Health in Malaysia completed a Research Fellowship in Health Economics with HEG from 1st August 2023 to 31st July 2024. Harish was introduced to and familiarised with the Australian healthcare system, including the workings of the Medicare Benefit Scheme and Pharmaceutical Benefits Scheme, and worked on the analysis and reporting of a trial-based economic evaluation for an intervention to reduce diabetes-related distress.

Reflecting on his year with HEG, Dr Narandaran said "I am grateful for the opportunity, remarkable experience, and exceptional hospitality of my colleagues and mentors during my time at HEG".

Other HEG visitors included **Assistant Professor Vivian Reckers Droog from Erasmus University, Rotterdam** who visited HEG from 21-23 October 2024. She presented an interesting seminar titled: 'Societal preferences for granting orphan drugs special status in reimbursement decisions'. Vivian's PhD student Ava Hoogenboom also visited us during this time.



Professor Cathy Mihalopoulos, Dr Harish Raj Narandaran, Professor Sophia Zoungas, Dr Mary Lou Chatterton



Associate Professor Filipa Sampaio

## INVITED AND KEYNOTE PRESENTATIONS

### 2023

#### Professor Cathy Mihalopoulos

- The Monash Data Futures Institute and the Faculty of Medicine, Nursing and Health Sciences: Health data research at Monash. Data and health economics.
- Australian Health Economics Society, Speed Mentoring Workshop: 'Career, strategy and path to grant success'.
- University of Melbourne Short course on economic evaluation: 'The KADS within trial economic evaluation'.

#### Dr Jemimah Ride

Australian Health Economics Society equity special interest group seminar: 'A new method to explore socioeconomic inequality impact of attributes in discrete choice experiments'.

#### Dr Thao Thai

Australian Centre for Health Services Innovation invited lecture: 'Step by step designing the partial choice design using Ngene'.

### 2024

#### Professor Cathy Mihalopoulos

- Public Health Association of Australia Prevention Symposium.
- World Health Summit: Health Care Financing in the Asia Pacific Region, Panel member and presenter of 'Assessing Evidence-based Cost effectiveness within the Asia Pacific Region'.

- Medicinal Psychedelics Conference, Panellist – 'How can psychedelic-assisted therapies be made affordable and accessible?'
- Australian Clinical Trial Association – Health Economics Interest Group Breakfast meeting – Target-D within trial economic evaluation.
- Alliance for Mental Health Systems Models (ACUMEN) 2024 Modelling workshop: Modelling for Economic Evaluation.
- Australian Health Economics Society, mental Health Special Interest Group – Within trial cost-utility analysis of treatment initiation with subcutaneous ketamine for treatment resistant depression – The KADS Study.
- Australasian Cognitive Remediation in Mental Health Conference – Is Cognitive Remediation Therapy Good Value for Money?
- Mental Health Australia – Members Policy Forum – Panel member of Stream 2 – The Prevention Imperative.
- Public Health Association of Australia – The Economic Benefits of Promotion and Prevention.
- Uppsala University, Uppsala Health Economic Group invited seminars – 'Modelling the cost-effectiveness of preventive and early interventions for young people' and 'The economic case for investing in prevention of mental disorders'.

- Ending Loneliness Together: 'Loneliness and Social Isolation: Research & Lived Experience Informing Practice and Policy' conference – Economics of Loneliness. Dr Lidia Engel was also a panellist at this conference.

**Dr Jemimah Ride** presented 'A new method to explore socioeconomic inequality impact of attributes in discrete choice experiments' in seminars at:

- Centre for Health Economics Monash University.
- Australian Health Economics Society preferences special interest group.
- University of Birmingham Health Economics Unit.

#### Dr Thao Thai

- Deakin Health Economics seminar: 'Preference Inversion in Discrete Choice Experiments: A Novel Adoption of the Emoji Scale'.
- AHES Mental Health SIG seminar: 'Developing an Australian Value Set for the Recovering Quality of Life (ReQoL) instrument using Discrete Choice Experiment with Duration'.
- International Health Economics Association Mental Health Economics SIG webinar: 'Content and Face Validity of Preference-based Quality of Life Instruments in Indigenous Youth Experiencing Mental Health Problems: A Qualitative Study'.

- Erasmus School of Health Policy & Management seminar: 'Preference Inversion in Discrete Choice Experiments: A Novel Adoption of the Emoji Scale'.
- Duke-NUS Medical School, Singapore presentation: 'Preference Inversion in Discrete Choice Experiments: A Novel Adoption of the Emoji Scale'.



Dr Lidia Engel and Sharon Clifford, [Connecting for Better Health Project Manager](#), at the 2024 Loneliness and Social Isolation: Research & Lived Experience Informing Practice and Policy conference

## SEMINAR SERIES

We hold monthly seminars by experts in health economics and related disciplines and create opportunities for learning and for networking with local and international guests. There were 22 seminars in 2023-2024; 8 from international speakers, 10 from local speakers and 3 from PhD students. Highlights include:

### 2023

**April** – Professor Jon Karnon (Flinders University): ‘Localising economic evaluation: synthesising local health data with elicited intervention effects to reflect local contexts’.

**June** – Dr Kees van Gool (University of Sydney): ‘Residential Aged Care Funding in Australia: Past, Present and Future’.

**October** – Professor Henry Cutler (Macquarie University): ‘Embedding value into mental healthcare funding and investment. Early results from a schema analysis’.

**December** – Dr Luke Munford, Dr Rachel Meacock & Prof Matt Sutton (University of Manchester): ‘Are there gender-based mental health inequalities in primary care in England?’.

### 2024

**February** – Professor John F P Bridges (Ohio State University): ‘The art and science of using best-worst scaling in health economics and beyond’.

**March** – Dr Giuseppe Moscelli (University of Surrey): ‘Non-monetary Interventions, Workforce Retention and Hospital Quality: Evidence from the English NHS’.

**June** – Associate Professor Ilias Goranitis (University of Melbourne): ‘A multicriteria decision analysis to support genomic policy decisions in Australia’.

**October** – Assistant Professor Vivian Reckers-Droog (Erasmus University): ‘Societal preferences for granting orphan drugs special status in reimbursement decisions’.

**November** – Dr Claire de Oliveira (University of Toronto): ‘Microsimulation applied to mental health: the use of microsimulation to inform psychosis-related health policy’.

**November** – Associate Professor Filipa Sampaio (Uppsala University): ‘Health and economic outcomes of a universal early intervention for parents and children from birth to age five: evaluation of the Salut Programme using a natural experiment’.

**November** – Professor Ghufron Mukti – Healthcare Next Door: ‘Indonesia’s Journey to Successfully Achieve Universal Health Coverage’. Refer to the breakout box on the right for further details.

**December** – Professor Nils Gutacker (University of York): ‘Redesigning payment systems to reduce health inequality’.

**December** – Associate Professor David Whitehurst (Simon Fraser University): ‘Exploring public views on the meaning of illness severity’.



Dr Fikru Rizal, Professor Cathy Mihalopoulos, Professor Ghufron Mukti and Professor Sally Green at the November 2024 Healthcare Next Door seminar.

In November 2024 HEG hosted Professor Ghufron Mukti, President Director of the Indonesian Social Security Agency for Health (BPJS Kesehatan). He presented at a SPHPM seminar to more than 150 attendees, titled ‘Healthcare Next Door: Indonesia’s Journey to Successfully Achieve Universal Health Coverage’. During his presentation, he highlighted the achievements and challenges of Indonesia’s Jaminan Kesehatan Nasional (JKN) programme, one of the world’s largest social health insurance schemes. It covered over 98% of the population, with 23,406 primary care centres and 3,152 hospitals as providers. He emphasised the main challenge ahead lies in ensuring sustainability amid rising healthcare costs driven by an ageing population and growing non-communicable diseases.

## COMMITTEES AND ADVISORY GROUPS

HEG staff and PhD students undertook broader service roles in the following groups and committees in 2023 and 2024:

Assessing Cost-Effectiveness:  
Oral Health Project Steering Group

IHEA (International Health  
Economics Association)

Australian Health Economics  
Society Executive Committee

IHEA Mental Health Special  
Interest Group

Australian Health Economics Society  
Economics of Mental Health Special  
Interest Group

ISPOR (The Professional Society for health  
Economics and Outcomes Research)

Australian Health Economics  
Society Health Preferences  
Special Interest Group

ISPOR (Events Subcommittee of the  
Victoria and Tasmania Student Chapter)

Child Mental Health Priorities Project  
Reference Group

Medical Services Advisory Committee  
PICO Advisory Sub Committee

Ending Loneliness Together  
Scientific Committee

Neuromedicines Discovery Centre

EuroQol Group

Patron Independent Data Governance  
Committee, Department of General  
Practice, University of Melbourne

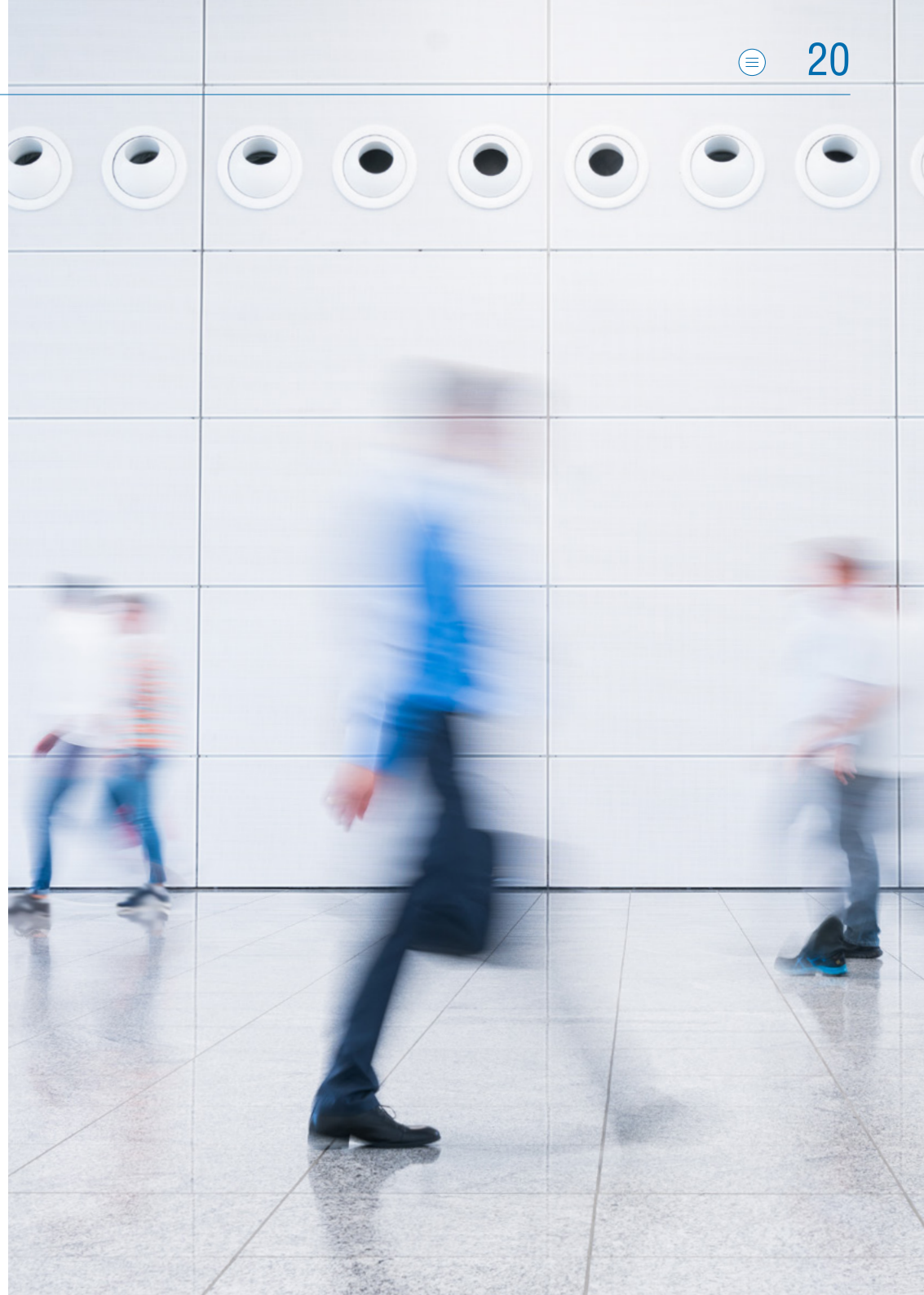
EuroQol Descriptive System  
Special Interest Group

SMHR (Society for Mental Health  
Research) Executive Committee

Australian Clinical Trials Alliance Health  
Economics Alongside Trials Special  
Interest Group (ACTA HEAT SIG)

SPHPM Early to Mid-Career  
Researchers Committee

Wesley Research Institute



# RESEARCH GRANTS, TENDERS AND CONSULTANCIES

## FUNDING FOR RESEARCH PROJECTS AWARDED IN 2023

PROJECT INVESTIGATORS	PROJECT TITLE	FUNDING SCHEME
<b>National Health and Medical Research Council</b>		
Robinson J, Witt K, Kartal D, McGorry PD, Occhipinti J-A, <b>Mihalopoulos C</b> , Pirkis JE, Chanen A, Skinner A, Zbukvic I	Can an aftercare service reduce suicide risk in young people? An effectiveness-implementation evaluation	2022 Partnership Projects
Alvarez-Jiminez M, Nicholas J, Gleeson JFM, Hitchcock C, McGorry PD, Mohr D, Ryan RM, Webb G, <b>Mihalopoulos C</b> , Gao C, Coates J, Allan J, Valentine L, Rice L, Bell IH, Mangelsdorf S, George Y, Von Cavallar, S, Sharp S, Baker S	Evaluating the Impact Of DigitalLly Enhancing Australian Youth Mental Health SerVicEs (the EVOLVE project): A Large Scale, Controlled, Process and Economic Evaluation of a Blended Digital Intervention	2022 Partnership Projects
Milton A, Chapman J, Siskind D, Brown E, Glozier N, Rodgers A, Firth J, Arnautovska U, Teasdale SB, Dawson AJ, <b>Chatterton ML</b>	Self-care of Multimorbidity in schizophrenia supported by Peer workers: a Co-designed health Information Technology (SiMPlicITy)	2022 Targeted Call For Research into Improving Physical Health of People with a Mental Illness
<b>Mihalopoulos C, Engel L</b> , Berk M, Lim MH, Sanci LA, Zoungas S, Skouteris H, Dow B, Shields M, Earnest A, <b>Hamilton M</b> , Ayton D, <b>Le L</b> , Barker S, Reavley N, Jennings GLR, Birrell E, Wild J, Hayes L	Towards a holistic priority setting approach for chronic disease management to tackle loneliness and social isolation in Australia	2022 Targeted Call For Research into Loneliness Social Isolation and Chronic Disease Management

PROJECT INVESTIGATORS	PROJECT TITLE	FUNDING SCHEME
<b>Medical Research Future Fund</b>		
Livingston PM, White VM, Orellana L, Mikocka-Walus A, Jefford MJ, Zalcborg J, Orford N, Hutchinson A, Barbour A, Ugalde A, Kiss N, Winter N, Smithers B, Watson DI, McCaffrey N, Austin DW, Mouzakis K, Lane K, Whitfield K, <b>Mihalopoulos C</b> , Ryan, T, Stevenson K, Yuen E, Musat T	iCare – An interactive online portal to improve health and wellbeing for people living with complex cancers, and their informal carers: a Phase II randomised controlled trial	2021 Clinical Trials Activity
Egerton-Warburton D, Cameron P, Teede H, Rickard CM, Morphett J, Fatovich DM, O'Reilly G, Callander E, Kuhn L, Keijzers G BJM, <b>Le L</b> , Enticott J, Buntine P, Tran V, Heiss L, Hullick C, Blecher G, Gourley S, Lee R, Hawkins T, Chan T, Melder A, Saddington E, Yang S, <b>Mihalopoulos C</b>	Just Say No to the Just in Case Cannula: An Implementation Science Trial with Roadmap for National Roll Out	2021 Clinical Trials Activity
Loo CK, Rodgers A, <b>Chatterton ML</b> , Nikolin S, Glozier N, Hadzi-Pavlovic D, Davey CG, Sarma S, Wells K, Hopwood MJ, Bayes A, Martin D, Kelly A, <b>Mihalopoulos C</b> , Millard M	TREK: Comparative Effectiveness of Ketamine and Esketamine in Treatment Resistant Depression	2021 Clinical Trials Activity
Amminger GP, Lin A, Yung AR, Clark SR, Rice SM, Nelson B, Yuen HP, McGorry PD, Thompson AD, <b>Le L</b> , Kevin RC Allott KA	The Cannabidiol First-Episode Psychosis Study: A randomised placebo-controlled trial	2021 Clinical Trials Activity Innovative Therapies for Mental Illness
Cartledge S, Beauchamp A, Driscoll A, O'Neil A, Redfern J, Gallagher RD, Stub D, Bray J, Wolfe R, <b>Zomer E</b> , Zhang L, Murphy BL, L Nourse R, Hennequin C, Bratby K, Ekegren C, Gauci S, Ball J, Liu Y, Hall T, <b>Mihalopoulos C</b>	HeartPath: Targeting health literacy and self-efficacy through patient education to prevent recurrent heart events in Australians with heart disease	2021 Consumer-Led Research
Newton NC, Gardner LA, Stockings EAL, Freeman B, Allsop SJ, Leung J, Champion KE, Sunderland M, <b>Mihalopoulos C</b> , McRobbie HJ, Stapinski LA, McBride NT, Lee NK, Thornton LK, Debenham, J, <b>Lee YY</b>	A new scalable eHealth approach to prevent e-cigarette use among adolescents: The Our Futures Vaping program	2021 Maternal Health and Healthy Lifestyles
Champion KE, Lubans DR, Newton NC, Baur LA, Teesson M, <b>Mihalopoulos C</b> , Gardner LA, Spring B, Slade T, Chapman C, Burrows TL, Thornton LK, Partridge S, Sunderland M, Parmenter BJ	Health4Life Parents & Teens: a co-designed and scalable eHealth intervention to reduce modifiable cancer risk factors among socio-economically disadvantaged adolescents	2021 Maternal Health and Healthy Lifestyles
Driscoll A, Hutchinson A, Orellana L, Atherton J, Audehm RG, Beauchamp A, Newton P, <b>Zomer E</b> , Lowe G, Cartledge S, Pereira-Salgado A, Pollock M	SAFE-HF - tranSlating heArt Failure guidElines into practice: a RCT of a Nurse Practitioner primary care service	2022 Clinician Researchers - Nurses Midwives and Allied Health
Said CM, Batchelor F, Callisaya M Vogrin, S Klaic, M McDonald, C Ramage E, <b>Engel L</b> , Zanker J, Lim W, Francis J, Bicknell E, Chudecka A, Brijnath BR, Bongiovanni L, Cursio-Barcham R, Mastrantuono D, de Barros Pinheiro M, Sherrington C	Implementation and evaluation of a co-designed exercise program to reduce falls in older people from culturally and linguistically diverse communities	2022 Dementia Ageing and Aged Care Mission

PROJECT INVESTIGATORS	PROJECT TITLE	FUNDING SCHEME
Said CM, Batchelor FA, Callisaya M, Ramage E, Duque G, Klaic M, Brijnath BR, <b>Engel L</b> , McDonald C, Francis J, Bongiovanni L, Chudecka A	Implementation of a co-designed, community led exercise program to reduce falls in older people from culturally and linguistically diverse communities: a pilot trial	2022 Effective Treatments and Therapies
Chapman J, Wheeler A, Siskind D, Yung A, <b>Lee YY</b> , Arnautovska U, Scott J, Burke K, Malacova E, Korman N, Wyder M, <b>Chatterton ML</b>	Improving quality of life of people with severe mental illness	2022 Effective Treatments and Therapies
Mills KL, Cobham VE, Peach N, Arunogiri S, Kay-Lambkin F, <b>Chatterton ML</b> , Bendall S, Back S, Perrin S, Brady KT	Scalable approaches to reducing alcohol and other drug use among traumatised young people: A RCT examining the safety, effectiveness, and cost-effectiveness of an integrated cognitive behavioural therapy delivered via telehealth	2022 Maternal Health and Healthy Lifestyles

PROJECT INVESTIGATORS	PROJECT TITLE	FUNDING SCHEME
<b>Other funding bodies</b>		
<b>Mihalopoulos C, Lee YL, Le P, Higgins L</b>	Financial modelling of hypothermic perfusion box for heart transplantation	Alfred Health
Ang S, Arunachalam, D, Roberts S, Robards B, Pham, T, <b>Le L</b>	Evaluation of the Job Ready Program model	Australian Government Department of Employment and Workplace Relations
Reifels L, Pirkis JE, Andriessen KAM, <b>Le L, Mihalopoulos C</b> , Neil AL	A systematic review of economic evaluations for suicide prevention	Australian Government Department of Health and Aged Care
Roczo D, Hogarth H, Gray K, Gordon J, Bodiya badu K, <b>Engel L</b> , Howells T	Evaluation of the Chronic Wound Consumables Scheme (CWCS) for People with Diabetes	Australian Government Department of Health and Aged Care
<b>Le L, Mihalopoulos C</b>	Evaluation of the Eating Disorder Medicare Benefit Schedule (MBS) Items	Australian Government Department of Health and Aged Care
Roczo D, Lobo D, Gordon J, Hoang MB, Bower WF, Ostaszkiwicz J, <b>Engel L</b> , Dang C	The Continence Research Project	Australian Government Department of Health and Aged Care
Buchholz M, Michalowsky B, <b>Engel L</b> , Weber N	Discrepancies between EQ-5D-5L self- and proxy ratings in dementia	EuroQol Research Foundation
Bailey C, <b>Engel L</b> , Michalowsky B, Peasgood T	The psychometric performance of the EQ-HWB in caregivers of persons living with dementia	EuroQol Research Foundation
<b>Engel L, Mihalopoulos C</b>	PhD scholarship: Incorporating informal carers' quality of life in health economic evaluation using the EQ-5D	EuroQol Research Foundation
Michalowsky B, Buchholz M, Xie F, <b>Engel L</b>	Variability and reliability of the EQ-HWB-S when health fluctuates: A mixed-methods study in dementia diseases	EuroQol Research Foundation
<b>Lee YY</b>	Economic analysis, mental health investment case in Gambia	R-Health Consult
<b>Zomer E</b> , Zoungas S, <b>Mihalopoulos C</b> , Bloom D, Ferrana M	Exploring the productivity and educational impacts of type 1 diabetes	Rio Tinto Children's Diabetes Centre: A Breakthrough T1D Centre of Excellence Seed Funding

## PROJECT INVESTIGATORS

Thompson AD, Penn DL, Watson A, Tennant M, Ellinghaus C, Macmillan I, Reinoso M, Pot-Kolde R, Bell IH, Zbukvic I, Bartholomeusz, CF, Allott KA, Kolovos D, **Mihalopoulos C**, Gao C, Nicholas J, Clark SR, Schubert KO, Perry Y, Alvarez-Jimenez M, McGorry PD

**Mihalopoulos C, Chatterton ML**

## PROJECT TITLE

VR social cognition therapy in early psychosis: effectiveness and implementation

Economic evaluation alongside a trial of psilocybin-assisted psychotherapy for treatment resistant major depressive disorder

## FUNDING SCHEME

Wellcome Trust

Woke Pharmaceuticals Pty Ltd

More information is available about the 'spokes' at [Sexual Health](#) and [Acute and Critical Care](#).

# RESEARCH GRANTS, TENDERS AND CONSULTANCIES

## FUNDING FOR RESEARCH PROJECTS AWARDED IN 2024

PROJECT INVESTIGATORS	PROJECT TITLE	FUNDING SCHEME
<b>National Health and Medical Research Council</b>		
Robinson J, Witt K, Kartal D, McGorry PD, Occhipinti J-A, <b>Mihalopoulos C</b> , Pirkis JE, Chanen A, Skinner A, Zbukvic I	Can an aftercare service reduce suicide risk in young people? An effectiveness-implementation evaluation	2022 Partnership Projects PRC1
Cash R, Zalesky A, Davey CG, Cocchi L, Loo CK, Simpson JA, <b>Mihalopoulos C</b> , Burgher B, <b>Chatterton ML</b> , Franklin, S & De Silva, A	Next Generation Therapeutic Brain Stimulation for Depression	2023 Clinical Trials and Cohort Studies
Tropea J, Bennett Noleen J, Peters S, Wolfenden L, Darmadi-Blackberry I, Lim W, Smith R, Lim LL, Etherton-Beer C, Fetherstonhaugh D, McCahon J, McDonald JU, Spinks C, Francis-Coad J, Malloy MJ, Sparke V, <b>Engel L</b> , Whitehead CH, Estabrooks C	IMMERSE-2 IMpleMenting Effective infection prevention and control in ReSidential aged carE: Communities of Practice for IPC Leads	2023 Targeted Calls for Research Improving Infection Prevention and Control in Residential Aged Care Homes
Slade T, <b>Mihalopoulos C</b> , Newton NC, Chapman C, Teesson M, Callear AL, Hudson J, Hides LM, Olsson CA, <b>Chatterton ML</b>	PREMISE (Prevention & Early intervention in Mental Illness and Substance use) Next Generation: New Targets, New Interventions	Centre of Research Excellence

PROJECT INVESTIGATORS	PROJECT TITLE	FUNDING SCHEME
<b>Medical Research Future Fund</b>		
Bennett-Levy J, Morley KC, Beesley VL, Haber PS, Shakespeare-Finch J, Atkinson C, Michie S, Schloss JM, Baillie A, Bird E, Wardle J, Matthews V, Laukkonen R, Hayes I, Vosz M, Jones LV, Mitchell J, Stauffer C, S West R, Kirby JN, Balasubramaniam S, <b>Lee YY</b> , Malone E, Delpech V	After the Floods: Evaluating a Stepped Care Model to Treat Chronic Disaster-related PTSD	2022 Clinical Trials Activity
Kimonis ER, Goulter N, Fleming G, Taylor N, <b>Mihalopoulos C</b> , Briggs NE, Hawes D, Dadds MR, Nickerson A	Improving mental health and wellbeing in diverse children with disruptive disorders: A co-designed school-based early intervention involving parent-teacher collaboration	2023 Childhood Mental Health Research
Cardamone-Breen M, Yap M, Jorm AF, Bei B, Smout A, Olivier P, <b>Lee YY</b> , Melvin G, McHardy G, <b>Mihalopoulos C</b>	Responding to adolescent school refusal with a novel online parenting intervention: Exploring the mediating role of parental factors	2023 Childhood Mental Health Research
Fatima Y, Wheeler K, Chawla J, Williams W, Potia AH, Sullivan D, von Senden R, Huda MM, Yap M, Blunden S, Wigginton B, Hou X-Y, Tan A, Smith S, Werner-Seidler A, Nicholls C, Cobham VE, Maximous M, <b>Mihalopoulos C</b> , Ridgway V, Farletti R, Williams H, Marshall K	Untapping the potential of sleep health to improve prevention and management of mental health problems in First Nations Children	2023 Childhood Mental Health Research
Miton A, Brown E, Glozier N, Thompson A, Siskind D, Harris A, McHugh C, Hancock N, Warren N, McArdle P, Chapman J, Arnautovska U, Ritchie G, Cook J, <b>Chatterton ML</b>	A hybrid-II implementation-effectiveness trial of a peer-supported self-management tool for young people in preparation for early intervention in psychosis service discharge (MY PREP-ED)	2023 Clinician Researchers: Applied Research in Health
Johnson C, Kaylor Hughes C, Gunn JM, McKenzie KJ, Pirkis JE, Bassilios B, McMorro R, Manski-Nankervis JA, Spittal MJ, <b>Chatterton ML</b> , Bibb J, London J, Huckvale K, <b>Mihalopoulos C</b> , Palmer V, Boyle D, Chondros P	Link-Me Plus: A Study to Optimise and Implement Link-Me Care Navigation into Primary Care General Practice	2023 Clinician Researchers: Applied Research in Health
Stub D, Nehme Z, Cullen LA, Chew, D, Zaman, S Ball, J, Chow CK, Kaye D, Briffa T, Cameron P, Nanayakkara S, Bray J, Finn, J, Cartledge S, Reid C, Hall T, Salathiel R, Patel H, Zoungas S, <b>Zomer E</b> , Talic S, Nelson A, Fernando HM, Sher L, Freak-Poli R, Dinh D, Kasza J, Bowden R, Bodnar D	Optimising chest pain pathways that ensure earlier access to definitive care for patients in remote and rural communities	2023 Clinician Researchers: Applied Research in Health

PROJECT INVESTIGATORS	PROJECT TITLE	FUNDING SCHEME
<p>Pang K, Anderson J, Bista S, Bourne A, Byrne M, Canty J, Cavve B, Cheung A, Coghill D, Cabrera DC, Cooper M, Crock P, Cronin T, Davies C, Donaghy O, Dutton M, Furzer B, Knight K, Lane R, Lin A, Marino J, McKercher K, <b>Mihalopoulos C</b>, Moore J, Morgan H, Newman C, O'Connell M, Pace C, Perry Y, Ravine A, Riggs D, Robinson K, Russell D, Saunders L, Siafarikas A, Simmons M, Skinner S, Stathis S, Strauss P, Telfer M, Titmuss A, Tollit M, Uink B, Wiggins J, Wynne K, Zbukvic I, Zwickl S</p>	Improving health outcomes via the Australian Research Consortium for Trans Youth and Children (ARCTYC)	2023 Models of Care for Sexuality & Gender Diverse People & People with Innate Variations of Sex Characteristics
<p><b>Le L, Mihalopoulos C</b>, Morris H, <b>Ride J</b>, Maybery D, Palmer V, Bassillios B</p>	Improving Telehealth Delivered Mental Health Care for Rural and Remote Areas	2023 Million Minds Mental Health Research Mission
<p>Dwyer DB, Ge Z, Gao C, Thompson AD, Wood SJ, Alvarez-Jimenez M, McGorry PD, Paterson J, Chapman W, Sinnott R, Rickwood D, Nelson B, <b>Lee YY</b></p>	Youth AI: Infrastructure for the next generation of youth mental healthcare	2023 National Critical Research Infrastructure
<p>Thompson AD, Brown E, Dwyer DB, Witt, K McGorry PD, <b>Chatterton ML, Mihalopoulos C</b>, Nelson B, Waterreus A, Yung A, Rickwood DJ, Wood SJ, Sara G, Parker SD, Schubert O, Fitzsimons J</p>	Enabling early psychosis research via a national clinical quality registry	2023 National Critical Research Infrastructure
<p>Fatima Y, Woodroffe T, Wheeler K, Sullivan DP, von Senden R, Skinner T, Bucks RS, Eastwood PR, Chawla J, Potia AH, <b>Tan A</b>, Oguoma V, Nasir BF, Martin P, Yiallourou S, Collaro A, <b>Mihalopoulos C</b>, Cooper R</p>	First Nation community roadshow for improving OSA awareness and education	2023 Optimising Screening Diagnosis and Management of Obstructive Sleep Apnoea Stream 1
<p>Waters KA, Nixon G, Vandeleur M, Chawla J, <b>Tan A</b>, Adams AM, Verginis N, Terrill PI, Kevat A, Collaro A, MacKay SG, Cooke E, Horne R, Davey M</p>	Clinical utility of Level 3 studies in paediatric sleep medicine	2023 Optimising Screening Diagnosis and Management of Obstructive Sleep Apnoea Stream 2-3

PROJECT INVESTIGATORS	PROJECT TITLE	FUNDING SCHEME
<b>Other funding bodies</b>		
<b>Mihalopoulos C, Chatterton ML</b>	Health Economics Platform	Alfred Health
Boyle F, Marrington S, Brooker K, Kocar S, Lilly K, Lohan A, Dean J, Maturi J, <b>Chatterton ML, Lee YY</b> , Cadman M, Franklin C, Yousef N	Evaluation of the Perinatal Mental Health and Wellbeing initiatives and the National Perinatal Mental Health Check	Australian Government Department of Health and Aged Care
Boyle F, Salom C, Huang Y, Porter M, Dean J, Marrington S, Lohan A, <b>Chatterton ML, Lee YY</b>	Evaluation of the Perinatal Mental Health and Wellbeing initiatives and the National Perinatal Mental Health Check	Australian Government Department of Health and Aged Care
<b>Mihalopoulos C</b> , Bassilios B, <b>Hamilton M</b> , Ftanou M, <b>Le L, Tan A, Chatterton ML, Ride J</b> , Gao C, Davey CG, Pirkis JE, Wright J, <b>Hewitt D</b>	Medicare Mental Health Centres and Head to Health Phone Service Evaluation	Australian Government Department of Health and Aged Care
<b>Mihalopoulos C</b> , Bassilios B, Skouteris H, Johnston D, <b>Hamilton M, Lee YY, Rizal F, Hewitt D</b>	National Early Intervention Service - Independent Evaluation	Australian Government Department of Health and Aged Care
Chen L, Thomas L, <b>Chatterton ML, Mihalopoulos C</b>	Repetitive Transcranial Magnetic Stimulation (rTMS)	Australian Government Department of Health and Aged Care
Berger E, Cowlshaw S, Harris B, Pfitzner N, McGaw V, Blewitt C, <b>Le L, Tan A</b> , Sanjakdar F, Lambert K, McGowan J, Elvins C	Independent Evaluation of the Supporting Recovery Pilot (SRP)	Australian Government Department of Health and Aged Care
<b>Mihalopoulos C</b> , Purcell R, <b>Chatterton ML</b> , Gao C, <b>Le L, Hamilton M, Hewitt D</b>	Evaluation of the financial and clinical sustainability of the Mental Health Referral Network	Australian Sports Commission
Kinchin I, <b>Engel L</b> , Rencz F	EQ-HWB, EQ-5D-5L, and ICECAP-A: A Comparative Study of Health and Wellbeing Measures in Ireland	EuroQol Research Foundation
<b>Thai T, Engel L, Wang P</b>	EQ-HWB in Culturally and Linguistically Diverse Background Communities	EuroQol Research Foundation
<b>Thai T, Engel L, Mihalopoulos C</b>	Head-to-Head Comparison of the Psychometric Performance of the EQ-HWB-S, EQ-5D-5L, Re-QoL	EuroQol Research Foundation
<b>Engel L, Wang P, Faller J, Sokolova V, Belay Y</b>	Psychometric performance of utility measures in older adults	EuroQol Research Foundation
Michalowsky B, Buchholz M, <b>Engel L</b> , Xie F	Responsiveness of the EQ-5D-5L in Dementia	EuroQol Research Foundation
<b>Thai T, Engel L</b> , Peasgood T, Mukuria C	Testing a modified version of the EQ-HWB-S among the general public in Australia	EuroQol Research Foundation

PROJECT INVESTIGATORS	PROJECT TITLE	FUNDING SCHEME
Gao L, <b>Engel L</b> , McCaffre, N, Rand S, Finch A	Validation of the EQ-HWB-S for measuring the health and wellbeing of informal carers	EuroQol Research Foundation
Waller D, Curtis K, Steinbeck KS, Zurynski Y, <b>Ride J</b> , Kang MS, Medlow S, Ho J, Ross K, Feuerlicht D, Rose D	Digital Psychosocial Assessment of Adolescents and Young Adults in Emergency Departments using the e-HEADSSS: Moving towards Implementation	NSW Health Translational Research Grants Scheme
<b>Mihalopoulos C, Chatterton ML, Hamilton M, Le L, Lee YY, Hewitt D</b>	MOST Health Economic Evaluation (Orygen Digital)	Orygen

More information is available about the 'spokes' at [Sexual Health](#) and [Acute and Critical Care](#).

# RESEARCH OUTPUTS 2023



## 56

Publications



## 1

Publicly available  
research report

## PUBLICATIONS

- 1 Ademi Z, **Zomer E**, Marquina C, Lee P, Talic S, Guo Y, Liew D. (2023). The Hospitalizations for Cardiovascular and Respiratory Conditions, Emergency Department Presentations and Economic Burden of Bushfires in Australia Between 2021 and 2030: A Modelling Study. *Curr Probl Cardiol*. DOI: 10.1016/j.cpcardiol.2022.101416
- 2 Ahmed A, Dujaili JA, Chuah LH, Hashmi FK, **Le LK**, Khanal S, Awaisu A, Chaiyakunapruk N. (2023). Cost-Effectiveness of Anti-retroviral Adherence Interventions for People Living with HIV: A Systematic Review of Decision Analytical Models. *Appl Health Econ Health Policy*. DOI: 10.1007/s40258-023-00818-4
- 3 Ahmed A, Dujaili JA, Chuah LH, Hashmi FK, **Le LKD**, Chatha ZF, Khanal S, Awaisu A, Chaiyakunapruk N. (2023). Cost-Effectiveness Analysis of Pharmacist Adherence Interventions in People Living with HIV/AIDS in Pakistan. *Healthcare (Basel)*. DOI: 10.3390/healthcare11172453
- 4 Bayer JK, Prendergast LA, Brown A, Bretherton L, Hiscock H, Nelson-Lowe M, Gilbertson T, Noone K, Bischof N, Beechey C, Muliadi F, **Mihalopoulos C**, Rapee RM. (2023). Prediction of clinical anxious and depressive problems in mid childhood amongst temperamentally inhibited preschool children: a population study. *Eur Child Adolesc Psychiatry*. DOI: 10.1007/s00787-021-01857-9
- 5 **Belay YB, Engel L, Lee YY**, Le N, **Mihalopoulos C**. (2023). Cost Effectiveness of Pharmacological and Non-pharmacological Treatments for Depression in Low- and Middle-Income Countries: A Systematic Literature Review. *Pharmacoeconomics*. DOI: 10.1007/s40273-023-01257-8
- 6 **Belay YB, Mihalopoulos C, Lee YY**, Mulhern B, **Engel L**. (2023). Examining the psychometric properties of a split version of the EQ-5D-5L anxiety/depression dimension in patients with anxiety and/or depression. *Qual Life Res*. DOI: 10.1007/s11136-023-03372-7
- 7 Buchholz J, McCaffrey N, Ugalde A, Muldowney A, Rand S, Hoefman R, **Mihalopoulos C, Engel L**. (2023). How well do the adult social care outcomes toolkit for carers, carer experience scale and care-related quality of life capture aspects of quality of life important to informal carers in Australia?. *Qual Life Res*. DOI: 10.1007/s11136-023-03459-1
- 8 Cameron L, **Ride J**. (2023). The role of mental health in online gambling decisions: A discrete choice experiment. *Soc Sci Med*. DOI: 10.1016/j.socscimed.2023.115885
- 9 Chisholm D, **Lee YY**, Baral PP, Bhagwat S, Dombrovskiy V, Grafton D, Kontsevaya A, Huque R, Kalani Okware K, Kulikov A, Marahatta K, Mavunganidze P, Omar N, Prasai D, Putoud N, Tsoyi E, Vergara J. (2023). Cross-country analysis of national mental health investment case studies in sub-Saharan Africa and Central, South and South-East Asia. *Front Health Serv*. DOI: 10.3389/frhs.2023.1214885
- 10 Dawson L, Nehme E, Nehme Z, **Zomer E**, Bloom J, Cox S, Anderson D, Stephenson M, Lefkovits J, Taylor A, Kaye D, Cullen L, Smith K, Stub D. (2023). Healthcare cost burden of acute chest pain presentations. *Emerg Med J*. DOI: 10.1136/emermed-2022-212674

- 11 Dawson LP, Nehme E, Nehme Z, **Zomer E**, Bloom J, Cox S, Anderson D, Stephenson M, Ball J, Zhou J, Lefkovits J, Taylor AJ, Horrigan M, Chew DP, Kaye D, Cullen L, **Mihalopoulos C**, Smith K, Stub D. (2023). Chest Pain Management Using Prehospital Point-of-Care Troponin and Paramedic Risk Assessment. *JAMA Intern Med*. DOI: 10.1001/jamainternmed.2022.6409
- 12 **Engel L**, Brijnath B, Chong TWH, Hills D, Hjorth L, Loi S, Majmudar I, **Mihalopoulos C**, Gerber K. (2023). Quality of life and loneliness post-bereavement: Results from a nationwide survey of bereaved older adults. *Death Stud*. DOI: 10.1080/07481187.2022.2155887
- 13 **Engel L**, Kosowicz L, Bogatyreva E, Batchelor F, Devlin N, Dow B, Gilbert AS, Mulhern B, Peasgood T, Viney R. (2023). Face Validity of Four Preference-Weighted Quality-of-Life Measures in Residential Aged Care: A Think-Aloud Study. *Patient*. DOI: 10.1007/s40271-023-00647-6
- 14 **Engel L**, Majmudar I, Mihalopoulos C, Tollit MA, Pang KC. (2023). Assessment of Quality of Life of Transgender and Gender-Diverse Children and Adolescents in Melbourne, Australia, 2017-2020. *JAMA Netw Open*. DOI: 10.1001/jamanetworkopen.2022.54292
- 15 **Engel L**, Whitehurst DGT, Haagsma J, Janssen MF, Mulhern B. (2023). What is measured by the composite, single-item pain/discomfort dimension of the EQ-5D-5L? An exploratory analysis. *Qual Life Res*. DOI: 10.1007/s11136-022-03312-x
- 16 **Faller J, Le LK, Chatterton ML, Perez JK**, Chiotelis O, Tran HNQ, Sultana M, **Hall N, Lee YY**, Chapman C, Newton N, Slade T, Sunderland M, Teesson M, **Mihalopoulos C**. (2023). A systematic review of economic evaluations for opioid misuse, cannabis and illicit drug use prevention. *BJPsych Open*. DOI: 10.1192/bjo.2023.515
- 17 Farhall J, Castle D, Constantine E, Foley F, Kyrios M, Rossell S, Arnold C, Leitan N, Villagonzalo KA, Brophy L, Fossey E, Meyer D, **Mihalopoulos C**, Murray G, Nunan C, Sterling L, Thomas N. (2023). Using a digital personal recovery resource in routine mental health practice: feasibility, acceptability and outcomes. *J Ment Health*. DOI: 10.1080/09638237.2022.2118688
- 18 Gardner LA, Rowe AL, Stockings E, Champion KE, Hides L, McBride N, Allsop S, O'Dean S, Sunderland M, **Lee YY, Mihalopoulos C**, Freeman B, Leung J, McRobbie H, Stapinski L, Lee N, Thornton L, Debenham J, Teesson M, Newton NC. (2023). Study protocol of the Our Futures Vaping Trial: a cluster randomised controlled trial of a school-based eHealth intervention to prevent e-cigarette use among adolescents. *BMC Public Health*. DOI: 10.1186/s12889-023-15609-8
- 19 Gill SD, Stella J, **Chatterton ML**, Lowry N, Kloot K, Reade T, Baker T, Hayden G, Ryan M, Seward H, Page RS. (2023). Economic consequences of injury in female Australian footballers: A prospective observational study of emergency department presentations. *Emerg Med Australas*. DOI: 10.1111/1742-6723.14156
- 20 Green JE, Berk M, Mohebbi M, Loughman A, McGuinness AJ, Castle D, **Chatterton ML, Perez J**, Strandwitz P, Athan E, Hair C, Nierenberg AA, Cryan JF, Jacka F. (2023). Feasibility, Acceptability, and Safety of Faecal Microbiota Transplantation in the Treatment of Major Depressive Disorder: A Pilot Randomized Controlled Trial. *Can J Psychiatry*. DOI: 10.1177/07067437221150508
- 21 **Hall NY, Le L**, Abimanyi-Ochom J, **Mihalopoulos C**. (2023). Measuring the importance of different barriers to opioid agonist treatment using best-worst scaling in an Australian setting. *Health Policy*. DOI: 10.1016/j.healthpol.2023.104939
- 22 **Hall NY, Le L**, Abimanyi-Ochom J, Teesson M, **Mihalopoulos C**. (2023). Identifying the most common barriers to opioid agonist treatment in an Australian setting. *Aust J Prim Health*. DOI: 10.1071/PY22269
- 23 Harvey AJ, Madden S, Rodgers A, Bull M, **Chatterton ML**, Hadzi-Pavlovic D, Loo CK, Martin DM. (2023). Randomised controlled trial of neurostimulation for symptoms of anorexia nervosa (TRENA study): study protocol. *J Eat Disord*. DOI: 10.1186/s40337-023-00940-7
- 24 Hickie IB, Iorfino F, Rohleder C, Song YJC, Nichles A, Zmicerevska N, Capon W, Guastella AJ, Leweke FM, Scott J, McGorry P, **Mihalopoulos C**, Killackey E, Chong MK, McKenna S, Aji M, Gorban C, Crouse JJ, Koethe D, Battisti R, Hamilton B, Lo A, Hackett ML, Hermens DF; Mind Plasticity Consortia; headspace Camperdown Consortia; Scott EM. (2023). EMPOWERED trial: protocol for a randomised control trial of digitally supported, highly personalised and measurement-based care to improve functional outcomes in young people with mood disorders. *BMJ Open*. DOI: 10.1136/bmjopen-2023-072082
- 25 Higginbotham B, **Perez JK**, Louie E, Haber PS, Lubman D, Arunogiri S, **Chatterton ML**, Morley KC. (2023). Economic evaluations of alcohol pharmacotherapy: Systematic review of economic evaluations of pharmacotherapy for the treatment of alcohol use disorder. *Aust N Z J Psychiatry*. DOI: 10.1177/00048674231201541
- 26 Hocking JS, Watson C, Chondros P, Sawyer SM, **Ride J**, Temple-Smith M, Boyle D, Skinner R, Patton GC, Lim MSC, Pirkis J, Johnson C, Newton S, Wardley A, Blashki G, Guy R, Dalziel K, Sanci L. (2023). Will a fee-for-service payment for a young people's health assessment in general practice increase the detection of health risk behaviours and health conditions? Protocol for a cluster randomised controlled trial (RAd Health Trial). *BMJ Open*. DOI: 10.1136/bmjopen-2023-074154

- 27 Holloway EE, Gray S, **Mihalopoulos C**, Versace VL, Le Gautier R, **Chatterton ML**, Hagger V, Halliday J, Henshaw K, Harrap B, Manallack S, Black T, Van Bruggen N, Hines C, O'Neil A, Skinner TC, Speight J, Hendrieckx C. (2023). Low-Intensity mental health Support via a Telehealth Enabled Network for adults with diabetes (LISTEN): protocol for a hybrid type 1 effectiveness implementation trial. *Trials*. DOI: 10.1186/s13063-023-07338-5
- 28 Hutchinson C, Whitehurst DGT, Crocker M, Lay K, **Engel L**, Ratcliffe J (2023): Measuring Quality of Life in Residential Aged Care Using the EQ-5D-5L: A Cross-Sectional Study on the Impact of Cognition Level and Proxy Perspective on Interrater Agreement. *Health & Social Care in the Community*, 5839776. DOI: 10.1155/2023/5839776
- 29 Koh AHK, Tan XW, Tor PC, **Chatterton ML**, Martin DM, Loo CK. (2023). The association between outpatient continuation/maintenance electroconvulsive therapy, readmission risk and total direct cost in patients with depressive, bipolar and psychotic disorders: A naturalistic retrospective cohort study. *J Affect Disord*. DOI: 10.1016/j.jad.2023.06.016
- 30 LaMontagne AD, Cox LL, Lockwood C, Mackinnon A, Hall N, Brimelow R, **Le LK**, **Mihalopoulos C**, King T. (2023). Correction: Evaluation of a workplace suicide prevention program in the Australian manufacturing industry: protocol for a cluster-randomised trial of MATES in manufacturing. *BMC Psychiatry*. DOI: 10.1186/s12888-023-04590-6
- 31 Lay K, Crocker M, **Engel L**, Ratcliffe J, Charlton S, Hutchinson C. (2023). How do older adults receiving aged care services understand and respond to the EQ-5D-5L? A think-aloud study in residential care. *Qual Life Res*. DOI: 10.1007/s11136-023-03466-2
- 32 **Le LK**, **Chatterton ML**, Rapee RM, Fitzpatrick S, Bussey K, Hudson J, Hunt C, Cross D, Magnus A, **Mihalopoulos C**. (2023). Burden and preference-based quality of life associated with bullying in children. *Eur Child Adolesc Psychiatry*. DOI: 10.1007/s00787-021-01807-5
- 33 **Le LK**, **Faller J**, **Chatterton ML**, **Perez JK**, Chiotelis O, Tran HNQ, Sultana M, **Hall N**, **Lee YY**, Chapman C, Newton N, Slade T, Sunderland M, Teesson M, **Mihalopoulos C**. (2023). Interventions to prevent alcohol use: systematic review of economic evaluations. *BJPsych Open*. DOI: 10.1192/bjo.2023.81
- 34 **Le LK**, Flego A, Krysinska K, Andriessen K, Bandara P, Page A, Schlichthorst M, Pirkis J, **Mihalopoulos C**, Carter G, Reifels L. (2023). Modelling the cost-effectiveness of brief aftercare interventions following hospital-treated self-harm. *BJPsych Open*. DOI: 10.1192/bjo.2023.525
- 35 **Le LK**, **Thai T**, Cameron PA, Sri-Ganeshan M, O'Reilly GM, Mitra B, Nehme Z, Brichko L, Underhill A, Charteris C, Egerton-Warburton D, **Mihalopoulos C**. (2023). Modelled economic evaluation of a virtual emergency department in Victoria. *Emerg Med Australas*. DOI: 10.1111/1742-6723.14319
- 36 Le N, **Belay YB**, **Le LK**, Pirkis J, **Mihalopoulos C**. (2023). Health-related quality of life in children, adolescents and young adults with self-harm or suicidality: A systematic review. *Aust N Z J Psychiatry*. DOI: 10.1177/00048674231165477
- 37 Lee P, Bowe SJ, **Engel L**, Lubetkin EI, Devlin N, Gao L. (2023). An Intersectional Approach to Quantifying the Impact of Geographic Remoteness and Health Disparities on Quality-Adjusted Life Expectancy: Application to Australia. *Value Health*. DOI: 10.1016/j.jval.2023.08.013
- 38 Lee P, Brennan AL, Stub D, Dinh DT, Lefkovits J, Reid CM, **Zomer E**, Liew D. (2023). Estimating the cost-effectiveness and return on investment of the Victorian Cardiac Outcomes Registry in Australia: a minimum threshold analysis. *BMJ Open*. DOI: 10.1136/bmjopen-2022-066106
- 39 Lee P, Xia T, **Zomer E**, van Vreden C, Pritchard E, Newnam S, Collie A, Iles R, Ademi Z. (2023). Exploring the Health and Economic Burden Among Truck Drivers in Australia: A Health Economic Modelling Study. *J Occup Rehabil*. DOI: 10.1007/s10926-022-10081-4
- 40 **Lee YY**, Skeen S, Melendez-Torres GJ, Laurenzi CA, van Ommeren M, Fleischmann A, Servili C, **Mihalopoulos C**, Chisholm D. (2023). School-based socio-emotional learning programs to prevent depression, anxiety and suicide among adolescents: a global cost-effectiveness analysis. *Epidemiol Psychiatr Sci*. DOI: 10.1017/S204579602300029X
- 41 Lomax KE, Taplin CE, Abraham MB, Smith GJ, Haynes A, **Zomer E**, Ellis KL, Clapin H, Zoungas S, Jenkins AJ, Harrington J, de Bock MI, Jones TW, Davis EA. (2023). Socioeconomic status and diabetes technology use in youth with type 1 diabetes: a comparison of two funding models. *Front Endocrinol (Lausanne)*. DOI: 10.3389/fendo.2023.1178958
- 42 Loo C, Glozier N, Barton D, Baune BT, Mills NT, Fitzgerald P, Glue P, Sarma S, Galvez-Ortiz V, Hadzi-Pavlovic D, Alonzo A, Dong V, Martin D, Nikolin S, Mitchell PB, Berk M, Carter G, Hackett M, Leyden J, Hood S, Somogyi AA, Lapidus K, Stratton E, Gainsford K, Garg D, Thornton NLR, Fourier C, Richardson K, Rozakis D, Scaria A, **Mihalopoulos C**, **Chatterton ML**, McDonald WM, Boyce P, Holtzheimer PE, Kozel FA, Riva-Posse P, Rodgers A. (2023). Efficacy and safety of a 4-week course of repeated subcutaneous ketamine injections for treatment-resistant depression (KADS study): randomised double-blind active-controlled trial. *Br J Psychiatry*. DOI: 10.1192/bjp.2023.79
- 43 Marquina C, Morton J, Brett T, Lloyd M, Radford J, Heal C, Hespe C, Gill G, Sullivan D, **Zomer E**, Li I, Pang J, Watts GF, Ademi Z. (2023). Enhancing the Detection and Care of Heterozygous Familial Hypercholesterolemia in Primary Care: Cost-Effectiveness and Return on Investment. *Circ Genom Precis Med*. DOI: 10.1161/CIRCGEN.122.003842

- 44 Marquina C, Morton J, **Zomer E**, Talic S, Lybrand S, Thomson D, Liew D, Ademi Z. (2023). Lost Therapeutic Benefit of Delayed Low-Density Lipoprotein Cholesterol Control in Statin-Treated Patients and Cost-Effectiveness Analysis of Lipid-Lowering Intensification. *Value Health*. DOI: 10.1016/j.jval.2022.11.013
- 45 Matheos CC, Liew D, **Zomer E**, Ademi Z. (2023). Cost-Effectiveness Analysis of Tobacco Control Strategies in Indonesia. *Value Health Reg Issues*. DOI: 10.1016/j.vhri.2022.08.013
- 46 **Mihalopoulos C**, Chen G, Scott JG, Bucholz J, Allen C, Coghill D, Jenkins P, Norman R, Ratcliffe J, Richardson J, Stathis S, Viney R. (2023). Assessing Outcomes for Cost-Utility Analysis in Children and Adolescents With Mental Health Problems: Are Multiattribute Utility Instruments Fit for Purpose?. *Value Health*. DOI: 10.1016/j.jval.2022.12.007
- 47 Morse AK, Sercombe J, Askovic M, Fisher A, Marel C, **Chatterton ML**, Kay-Lambkin F, Barrett E, Sunderland M, Harvey L, Peach N, Teesson M, Mills KL. (2023). Systematic review of the efficacy, effectiveness, and cost-effectiveness of stepped-care interventions for the prevention and treatment of problematic substance use. *J Subst Abuse Treat*. DOI: 10.1016/j.jsat.2022.108928
- 48 **Nguyen TM**, Bridge G, Hall M, Theodore K, Lin C, Scully B, Heredia R, **Le LK**, **Mihalopoulos C**, Calache H. (2023). Is value-based healthcare a strategy to achieve universal health coverage that includes oral health? An Australian case study. *J Public Health Policy*. DOI: 10.1057/s41271-023-00414-9
- 49 **Nguyen TM**, Tonmukayakul U, **Khanh-Dao Le L**, Singh A, Lal A, Ananthapavan J, Calache H, **Mihalopoulos C**. (2023). Modeled health economic and equity impact on dental caries and health outcomes from a 20% sugar sweetened beverages tax in Australia. *Health Econ*. DOI: 10.1002/hec.4739
- 50 **Nguyen TM**, Tonmukayakul U, Le LK, Calache H, **Mihalopoulos C**. (2023). Economic Evaluations of Preventive Interventions for Dental Caries and Periodontitis: A Systematic Review. *Appl Health Econ Health Policy*. DOI: 10.1007/s40258-022-00758-5
- 51 **Ride J**, Kasteridis P, Gutacker N, Gravelle H, Rice N, Mason A, Goddard M, Doran T, Jacobs R. (2023). Impact of prevention in primary care on costs in primary and secondary care for people with serious mental illness. *Health Econ*. DOI: 10.1002/hec.4623
- 52 Saya S, Chondros P, Abela A, **Mihalopolous C**, **Chatterton ML**, Gunn J, Chen TF, Polasek TM, Dettmann E, Brooks R, King M, Spencer L, Alphonse P, Milton S, Ramsay G, Siviour Z, Liew J, Ly P, Thoenig M, Seychell R, La Rocca F, Hesson LB, Mejias N, Sivertsen T, Galea MA, Bousman C, Emery J. (2023). The PRESIDE (PhaRmacogEnomicS In DEpression) Trial: a double-blind randomised controlled trial of pharmacogenomic-informed prescribing of antidepressants on depression outcomes in patients with major depressive disorder in primary care. *Trials*. DOI: 10.1186/s13063-023-07361-6
- 53 **Tan EJ**, Raut T, **Le LK**, Hay P, Ananthapavan J, **Lee YY**, **Mihalopoulos C**. (2023). The association between eating disorders and mental health: an umbrella review. *J Eat Disord*. DOI: 10.1186/s40337-022-00725-4
- 54 **Thai TTH**, **Engel L**, **Perez JK**, **Tan EJ**, Eades S, Sanci L, **Mihalopoulos C**. (2023). A systematic review of health state utility values and psychometric performance of generic preference-based instruments for children and adolescents with mental health problems. *Qual Life Res*. DOI: 10.1007/s11136-023-03441-x
- 55 Weber N, Xie F, Kohlmann T, Mohr W, Platen M, Rädke A, Kilimann I, **Engel L**, Michalowsky B. (2023). Fluctuations of health states in dementia diseases and their impact on the assessment of health today using the EQ-5D-5L: Protocol of a mixed-methods study. *Front Public Health*. DOI: 10.3389/fpubh.2023.1031978
- 56 Whiteford H, Bagheri N, Diminic S, Enticott J, Gao CX, **Hamilton M**, Hickie IB, **Khanh-Dao Le L**, **Lee YY**, Long KM, McGorry P, Meadows G, **Mihalopoulos C**, Occhipinti JA, Rock D, Rosenberg S, Salvador-Carulla L, Skinner A. (2023). Mental health systems modelling for evidence-informed service reform in Australia. *Aust N Z J Psychiatry*. DOI: 10.1177/00048674231172113

### 2023 PUBLICLY AVAILABLE RESEARCH REPORT

Boyle FM, Diminic SN, **Chatterton ML**, Salom C, Dean JH, Huang Y, **Lee YY**, Harris M, Yousef N, Lohan A, Juckel J, Marrington S. (2023). [Evaluation services for the SANE pilot for people with complex mental health needs: Final Report](#). Institute for Social Science Research, The University of Queensland.

Published by HEG 'Hub' staff members.

More information is available about the 'spokes' at [Sexual Health and Acute and Critical Care](#).

# RESEARCH OUTPUTS 2024



## 89

Publications



## 1

Publicly available  
research report

### PUBLICATIONS

- 1 Abushanab D, Al-Badriyeh D, Marquina C, Morton JI, Lloyd M, **Zomer E**, Talic S, Liew D, Ademi Z. (2024). The Reduction of the Productivity Burden of Cardiovascular Disease by Improving the Risk Factor Control Among Australians with Type 2 Diabetes: A 10-Year Dynamic Analysis. *Eur J Prev Cardiol*. DOI: 10.1093/eurjpc/zwae292
- 2 Atkins ER, Nguyen LH, **Chatterton ML**, Schlaich M, Schutte AE, Rodgers A. (2024). The cost of treating hypertension in Australia, 2012-22: an economic analysis. *Med J Aust*. DOI: 10.5694/mja2.52522
- 3 Bandara P, Page A, Reifels L, Krysinska K, Andriessen K, Schlichthorst M, Flego A, **Le LK**, **Mihalopoulos C**, Pirkis J. (2024). Attributable risk of suicide for populations in Australia. *Front Psychiatry*. DOI: 10.3389/fpsy.2023.1285542
- 4 Batterham PJ, Gulliver A, Heffernan C, Caelear AL, Werner-Seidler A, Turner A, Farrer LM, **Chatterton ML**, **Mihalopoulos C**, Berk M. (2024). A Brief Workplace Training Program to Support Help-Seeking for Mental Ill-Health: Protocol for the Helipad Cluster Randomized Controlled Trial. *JMIR Res Protoc*. DOI: 10.2196/55529
- 5 **Belay YB**, **Mihalopoulos C**, **Lee YY**, **Engel L**. (2024). Health-related quality of life and utility values among patients with anxiety and/or depression in a low-income tertiary care setting: a cross-sectional analysis. *Qual Life Res*. DOI: 10.1007/s11136-024-03735-8
- 6 Bloom JE, Nehme E, Paratz ED, Dawson L, Nelson AJ, Ball J, Eliakundu A, Voskoboinik A, Anderson D, Bernard S, Burrell A, Udy AA, Pilcher D, Cox S, Chan W, **Mihalopoulos C**, Kaye D, Nehme Z, Stub D. (2024). Healthcare and economic cost burden of emergency medical services treated non-traumatic shock using a population-based cohort in Victoria, Australia. *BMJ Open*. DOI: 10.1136/bmjopen-2023-078435
- 7 Brophy L, Fletcher J, Dawadi S, Reece J, Edan V, Enticott J, Farhall J, Fossey E, Hamilton B, Harvey C, Meadows G, **Mihalopoulos C**, Morrisroe E, Newton R, Palmer V, Vine R, Waks S, Pirkis J. (2024). A longitudinal study of the impacts of a stay in a Prevention and Recovery Care service in Victoria, Australia. *Aust N Z J Psychiatry*. DOI: 10.1177/00048674241242943
- 8 Buchholz M, **Engel L**, Kleinke F, Mühlichen F, Pfaff M, Platen M, Rädke A, Scharf A, Weber N, van den Berg N, Hoffmann W, Michalowsky B. (2024). Discrepancies between self- and proxy-rated quality of life in people living with dementia. *Alzheimers Dement (N Y)*. DOI: 10.1002/trc2.12486
- 9 Buzancic I, Koh HJW, Trin C, Nash C, Ortner Hadziabdic M, Belec D, Zoungas S, **Zomer E**, Dalli L, Ademi Z, Chua B, Talic S. (2024). Do clinical decision support tools improve quality of care outcomes in the primary prevention of cardiovascular disease: A systematic review and meta-analysis. *Am J Prev Cardiol*. DOI: 10.1016/j.ajpc.2024.100855

- 10 Cameron L, **Ride J**, Devlin N. (2024). An Economic Model of Gambling Behaviour: A Two-Stage Approach. *J Gamb Stud*. DOI: 10.1007/s10899-022-10146-2
- 11 Carl T, Tully LA, McLean RK, Dadds MR, Hawes DJ, **Mihalopoulos C**, **Chatterton ML**, Oberklaid F, Waters AM, Shanley D, Yap MBH, Cann WG, Carlick T, Northam JC. (2025). Increasing parent help-seeking for child mental health: A study protocol for the growing minds check-in, an online universal screening tool. *Contemp Clin Trials*. DOI: 10.1016/j.cct.2024.107801
- 12 **Chatterton ML**, **Belay YB**. (2024). Cost-effectiveness of task-shifting in resource-constrained settings. *Lancet Glob Health*. DOI: 10.1016/S2214-109X(24)00038-X
- 13 **Chatterton ML**, **Faller J**, **Le LK**, **Engel L**, Williams LJ, Pasco JA, **Mihalopoulos C**. (2024). Health service and medication costs associated with common mental disorders and subthreshold symptoms in women: Findings from the Geelong Osteoporosis Study in Australia. *Aust N Z J Psychiatry*. DOI: 10.1177/00048674241229931
- 14 **Chatterton ML**, **Lee YY**, **Le LK**, Nichols M, Carter R, Berk M, **Mihalopoulos C**. (2024). Cost-utility analysis of adjunct repetitive transcranial magnetic stimulation for treatment resistant bipolar depression. *J Affect Disord*. DOI: 10.1016/j.jad.2024.04.075
- 15 **Chatterton ML**, **Perez JK**, **Lee YY**, **Le LK**, Birrell L, Slade T, Mewton L, Hides L, McBride N, Allsop S, Furneaux-Bate A, Bryant Z, Ellem R, Baker MJ, Quinn C, Chapman C, Newton NC, Teesson M, **Mihalopoulos C**. (2024). Cost-Utility Analysis of a School-Based Universal Program for the Prevention of Anxiety, Depression, and Substance: The Climate Schools Combined Trial. *International Journal of Mental Health and Addiction*. DOI: 10.1007/s11469-024-01423-9
- 16 Cheng LJ, **Engel L**, Chen LA, Soh SZY, Koh GC, Luo N. (2024). Using EQ-5D for Proxy Assessment of Health-Related Quality of Life in Residential Care Facilities: A Systematic Review of Feasibility and Psychometric Properties. *J Am Med Dir Assoc*. DOI: 10.1016/j.jamda.2023.10.020
- 17 Darab MG, **Engel L**, Henzler D, Lauerer M, Nagel E, Brown V, **Mihalopoulos C**. (2024). Model-Based Economic Evaluations of Interventions for Dementia: An Updated Systematic Review and Quality Assessment. *Appl Health Econ Health Policy*. DOI: 10.1007/s40258-024-00878-0
- 18 Davis JA, Connolly ML, Young LM, Turner M, Mahoney S, Saunders D, John T, Fiddes R, Bryan M, Berk M, Davids I, Barrand S, Jacka FN, Murray G, McDonald E, **Chatterton ML**, Kaylor-Hughes C, **Mihalopoulos C**, Yung A, Thomas N, Osborne R, Iyer R, Meyer D, Radovic L, Jabeen T, Marx W, O'Shea M, Mundell NL, George ES, Rocks T, Ruusunen A, Russell S, O'Neil A; HARMON-E trial team. (2024). Evaluating the effectiveness of a multi-component lifestyle therapy program versus psychological therapy for managing mood disorders (HARMON-E): protocol of a randomised non-inferiority trial. *BMC Psychiatry*. DOI: 10.1186/s12888-024-06098-z
- 19 Dolar V, **Chatterton ML**, **Le LK**, **Mihalopoulos C**, Thomas N, **Engel L**. (2024). Health Service Utilisation of People Living with Psychosis: Validity of Self-report Compared with Administrative Data in a Randomised Controlled Trial. *Appl Health Econ Health Policy*. DOI: 10.1007/s40258-023-00849-x
- 20 Dong V, Brettell L, Massaneda-Tuneu C, Rita Barreiros A, Vinh Cao T, Kelly C, Zeng Y, Aoki N, Tor PC, Bayes A, Branjerdporn G, Sarma S, Kwan E, Waite S, Mohan T, Hussain S, Gálvez V, Weiss A, Bull M, **Lou Chatterton M**, **Mihalopoulos C**, Glozier N, Hadzi-Pavlovic D, Hopwood M, Mitchell P, Power B, Sara G, Wells K, Loo C, Martin D. (2024). Facilitating routine data collection to improve clinical quality and research in Interventional Psychiatry: The CARE Network. *Aust N Z J Psychiatry*. DOI: 10.1177/00048674241266057
- 21 Dow B, Sawvas S, Dang C, Batchelor F, Doyle C, Cooper C, Livingston G, Wise E, Tan E, Panayiotou A, Malta S, Clarke P, Burton J, Low LF, Loi SM, Fairhall A, Polacsek M, Lyketsos C, Scherer S, Ames D, **Engel L**, Goh AMY. (2024). Promoting Independence Through Quality Dementia Care at Home (PITCH): An Australian Stepped-Wedge Cluster Randomised Controlled Trial Evaluating a Dementia Training Program for Home Care Workers. *Int J Geriatr Psychiatry*. DOI: 10.1002/gps.6140
- 22 **Engel L**, Alvarez-Jimenez M, Cagliarini D, D'Alfonso S, **Faller J**, Valentine L, Koval P, Bendall S, O'Sullivan S, Rice S, Miles C, Penn DL, Phillips J, Russon P, Lederman R, Killackey E, Lal S, Maree Cotton S, Gonzalez-Blanch C, Herrman H, McGorry PD, Gleeson JFM, **Mihalopoulos C**. (2024). The Cost-Effectiveness of a Novel Online Social Therapy to Maintain Treatment Effects From First-Episode Psychosis Services: Results From the Horizons Randomized Controlled Trial. *Schizophr Bull*. DOI: 10.1093/schbul/sbad071
- 23 **Engel L**, Bailey C, Bogatyreva E, Batchelor F, Devlin N, Dow B, Gilbert AS, Mulhern B, Viney R, Peasgood T. (2024). Appropriateness of the EQ-HWB for Use in Residential Aged Care: A Proxy Perspective. *Patient*. DOI: 10.1007/s40271-024-00715-5
- 24 **Engel L**, Chiotelis O, Papadopoulos N, Hiscock H, Howlin P, McGillivray J, Bellows ST, Rinehart N, **Mihalopoulos C**. (2024). Sleeping Sound Autism Spectrum Disorder (ASD): Cost-Effectiveness of a Brief Behavioural Sleep Intervention in Primary School-Aged Autistic Children. *J Autism Dev Disord*. DOI: 10.1007/s10803-024-06422-2
- 25 **Engel L**, McCaffrey N, **Mihalopoulos C**, Muldowney A, Mulhern B, **Ride J**. (2024). Putting a Dollar Value on Informal Care Time Provided to People Living With Dementia: A Discrete Choice Experiment. *Value Health*. DOI: 10.1016/j.jval.2024.05.021

- 26 **Engel L, Mihalopoulos C.** (2024). The loneliness epidemic: a holistic view of its health and economic implications in older age. *Med J Aust*. DOI: 10.5694/mja2.52414
- 27 **Engel L, Sokolova V,** Bogatyreva E, Leuenberger A. (2024). Understanding the influence of different proxy perspectives in explaining the difference between self-rated and proxy-rated quality of life in people living with dementia: a systematic literature review and meta-analysis. *Qual Life Res*. DOI: 10.1007/s11136-024-03660-w
- 28 **Faller J, Perez JK, Mihalopoulos C, Chatterton ML, Engel L, Lee YY, Le PH, Le LK.** (2024). Economic evidence for prevention and treatment of eating disorders: An updated systematic review. *Int J Eat Disord*. DOI: 10.1002/eat.24113
- 29 Feng YS, Kohlmann T, Peasgood T, **Engel L,** Mulhern B, Pickard AS. (2024). Scoring the EQ-HWB-S: can we do it without value sets? A non-parametric item response theory analysis. *Qual Life Res*. DOI: 10.1007/s11136-024-03601-7
- 30 GBD 2019 Australia Collaborators (**Long Le** is a member). Pre-COVID life expectancy, mortality, and burden of diseases for adults 70 years and older in Australia: a systematic analysis for the Global Burden of Disease 2019 Study. *Lancet Regional Health – Western Pacific*. 2024; 47:101092
- 31 GBD 2019 Injuries Collaborators (**Long Le** is a member). Global, regional, and national burden of injuries, and burden attributable to injuries risk factors, 1990 to 2019: results from the Global Burden of Disease study 2019. *Public health*. 2024; 237: 212-31
- 32 GBD 2021 Demographic Collaborators (**Long Le** is a member). Global age-sex-specific mortality, life expectancy, and population estimates in 204 countries and territories and 811 subnational locations, 1950–2021, and the impact of the COVID-19 pandemic: a comprehensive demographic analysis for the Global Burden of Disease Study 2021. *The Lancet*. 2024; 403(10440): 1989-2056
- 33 GBD 2021 Diseases and Injuries Collaborators (**Long Le** is a member). Global incidence, prevalence, years lived with disability (YLDs), disability-adjusted life-years (DALYs), and healthy life expectancy (HALE) for 371 diseases and injuries in 204 countries and territories and 811 subnational locations, 1990–2021: a systematic analysis for the Global Burden of Disease Study 2021. *The Lancet*. 2024; 403 (10440): 2133-2161
- 34 GBD 2021 Fertility and Forecasting Collaborators (**Long Le** is a member). Global fertility in 204 countries and territories, 1950–2021, with forecasts to 2100: a comprehensive demographic analysis for the Global Burden of Disease Study 2021. *The Lancet*. 2024; 403 (10440): 2057-2099
- 35 GBD 2021 Forecasting Collaborators (**Long Le** is a member). Burden of disease scenarios for 204 countries and territories, 2022–2050: a forecasting analysis for the Global Burden of Disease Study 2021. *The Lancet*. 2024; 430(10440):2204-2256
- 36 GBD 2021 Nervous System Disorders Collaborators (**Long Le** is a member). Global, regional, and national burden of disorders affecting the nervous system, 1990–2021: a systematic analysis for the Global Burden of Disease Study 2021. *The Lancet Neurology* 2024; 403(10440): 344-381
- 37 GBD 2021 Risk Factors Collaborators (**Long Le** is a member). Global burden and strength of evidence for 88 risk factors in 204 countries and 811 subnational locations, 1990–2021: a systematic analysis for the Global Burden of Disease Study 2021. *The Lancet*. 2024; 403 (10440):2162-2203
- 38 GBD 2021 Stroke Risk Factor Collaborators (**Long Le** is a member). Global, regional, and national burden of stroke and its risk factors, 1990–2021: a systematic analysis for the Global Burden of Disease Study 2021. *The Lancet Neurology*. 2024; 23(10):973-1003
- 39 GBD 2023 Cardiovascular Diseases and Risks Collaborators (**Long Le** is a member). Global burden of cardiovascular diseases and risks, 1990-2022. *Journal of the American College of Cardiology*. 2023; 82(25); 2350-2473
- 40 Gerber K, Hjorth L, Bryant C, Lock K, Chong T, **Engel L,** Hills D, Loi S, White P, Shimoinaba K, Brijnath B (2024). Primary Care Consultations for Grief in Older People – A Missed Opportunity for Mental Health Support. *Clinical Gerontologist*, 1–13. DOI:10.1080/07317115.2024.2321341
- 41 **Hall N, Le L,** Abimanyi-Ochom J, Marel C, Mills K, Teesson M, **Mihalopoulos C.** (2024). Estimating the societal cost of heroin dependence in an Australian population engaged in treatment or harm reduction services. *Drug Alcohol Depend*. DOI: 10.1016/j.drugalcdep.2024.112447
- 42 **Hall NY,** Hetti Pathirannahalage DM, **Mihalopoulos C,** Austin SB, Le L. (2024). Global Prevalence of Adolescent Use of Nonprescription Weight-Loss Products: A Systematic Review and Meta-Analysis. *JAMA Netw Open*. DOI: 10.1001/jamanetworkopen.2023.50940
- 43 Halliday JA, Holmes-Truscott E, Thuraisingam S, Sjöholm U, **Chatterton ML,** Russell-Green S, O E, Andrikopoulos S, Black T, Davidson S, Noonan G, Scibilia R, Hagger V, Hendrieckx C, **Mihalopoulos C,** Shaw JAM, Versace VL, Zoungas S, Skinner TC, Speight J; HypoPAST Research Group. (2024). Hypoglycaemia Prevention, Awareness of Symptoms, and Treatment (HypoPAST): protocol for a 24-week hybrid type 1 randomised controlled trial of a fully online psycho-educational programme for adults with type 1 diabetes. *Trials*. DOI: 10.1186/s13063-024-08556-1
- 44 Hamblin PS, Earnest A, Russell AW, Talic S, **Zomer E,** Zoungas S. (2024). The impact of sodium glucose co-transporter 2 inhibitors and glucagon-like peptide 1 receptor agonists on insulin utilisation and costs in Australia: a national retrospective observational cross-sectional study. *Lancet Reg Health West Pac*. DOI: 10.1016/j.lanwpc.2024.101207

- 45 Hamblin PS, Earnest A, Russell AW, Talic S, **Zomer E**, Zoungas S. (2024). Utilization and cost of non-insulin glucose-lowering drugs in Australia from 2013 to 2023. *Diabetes Obes Metab*. DOI: 10.1111/dom.15893
- 46 **Hamilton MP**, Gao C, Wiesner G, Folia KM, Mensink JM, Plencnerova P, Baker DG, McGorry PD, Parker A, Karnon J, Cotton SM, **Mihalopoulos C**. (2024). A Prototype Software Framework for Transferable Computational Health Economic Models and Its Early Application in Youth Mental Health. *Pharmacoeconomics*. DOI: 10.1007/s40273-024-01378-8
- 47 Henry E, Al-Janabi H, Brouwer W, Cullinan J, **Engel L**, Griffin S, Hulme C, Kingkaew P, Lloyd A, Payakachat N, Pennington B, Peña-Longobardo LM, Prosser LA, Shah K, Ungar WJ, Wilkinson T, Wittenberg E. (2024). Recommendations for Emerging Good Practice and Future Research in Relation to Family and Caregiver Health Spillovers in Health Economic Evaluations: A Report of the SHEER Task Force. *Pharmacoeconomics*. DOI: 10.1007/s40273-023-01321-3
- 48 Higginbotham B, **Perez JK**, Louie E, Haber PS, Lubman D, Arunogiri S, **Chatterton ML**, Morley KC. (2024). Economic evaluations of alcohol pharmacotherapy: Systematic review of economic evaluations of pharmacotherapy for the treatment of alcohol use disorder. *Aust N Z J Psychiatry*. DOI: 10.1177/00048674231201541
- 49 Ho TQA, **Engel L**, Melvin G, **Le LK**, Le HND, **Mihalopoulos C**. (2024). Young People's Barriers and Facilitators of Engagement with Web-Based Mental Health Interventions for Anxiety and Depression: A Qualitative Study. *Patient*. DOI: 10.1007/s40271-024-00707-5
- 50 Ho TQA, **Le LK**, **Engel L**, Le N, Melvin G, Le HND, **Mihalopoulos C**. (2024). Barriers to and facilitators of user engagement with web-based mental health interventions in young people: a systematic review. *Eur Child Adolesc Psychiatry*. DOI: 10.1007/s00787-024-02386-x
- 51 Hutchinson C, Khadka J, Crocker M, Lay K, Milte R, Whitehirst DG, **Engel L**, Ratcliffe J. (2024). Examining interrater agreement between self-report and proxy-report responses for the quality of life-aged care consumers (QOL-ACC) instrument. *J Patient Rep Outcomes*. DOI: 10.1186/s41687-024-00705-z
- 52 Huynh E, Swait J, Lancsar E, **Ride J**. (2024). Menu choice stated preference tasks to capture demand complementarity in health. *Soc Sci Med*. DOI: 10.1016/j.socscimed.2024.116636
- 53 Kartal D, Jaeger T, Lamblin M, Richards H, Witt K, Occhipinti JA, **Mihalopoulos C**, **Chatterton ML**, Chanen A, McGorry P, Skinner A, Zbukvic I, Thompson A, Knott J, Flego A, Hamilton C, Webb M, Mullen E, Swingler N, Kenny B, Robinson J. (2024). Evaluation of a youth-focused suicide prevention HOPE aftercare service: protocol for a non-randomized hybrid effectiveness-implementation type I design. *BMC Health Serv Res*. DOI: 10.1186/s12913-024-11795-2
- 54 Krysinska K, Andriessen K, Bandara P, Reifels L, Flego A, Page A, Schlichthorst M, Pirkis J, **Mihalopoulos C**, **Khanh-Dao Le L**. (2024). The Cost-Effectiveness of Psychosocial Interventions Following Self-Harm in Australia. *Crisis*. DOI: 10.1027/0227-5910/a000926
- 55 Lawrence J, South M, Hiscock H, Capurro D, Sharma A, **Ride J**. (2024). Retrospective analysis of the impact of electronic medical record alerts on low value care in a pediatric hospital. *J Am Med Inform Assoc*. DOI: 10.1093/jamia/ocad239
- 56 Lay K, Crocker M, **Engel L**, Ratcliffe J, Milte R, Hutchinson C. (2024). Exploring older people's understanding of the QOL-ACC, a new preference-based quality-of-life measure, for quality assessment and economic evaluation in aged care: the impact of cognitive impairment and dementia. *Health Qual Life Outcomes*. DOI: 10.1186/s12955-023-02222-x
- 57 **Le DQ**, **Le LK**, **Le PH**, Yap MBH, **Mihalopoulos C**. (2024). Cost effectiveness of interventions to prevent the occurrence and the associated economic impacts of child maltreatment: A systematic review. *Child Abuse Negl*. DOI: 10.1016/j.chiabu.2024.106863
- 58 **Le LK**, **Tan EJ**, Hay P, Ananthapavan J, **Lee YY**, **Mihalopoulos C**. (2024). The Modeled Cost-Effectiveness of a Prevention Program Targeting Both Eating Disorders and High BMI. *Int J Eat Disord*. DOI: 10.1002/eat.24238
- 59 **Le PH**, **Khanh-Dao Le L**, Rajaratnam SMW, **Mihalopoulos C**. (2024). Quality of life impacts associated with comorbid insomnia and depression in adult population. *Qual Life Res*. DOI: 10.1007/s11136-024-03793-y
- 60 Lee P, **Engel L**, Lubetkin E, Gao L. (2024). Exploring the Comparability Between EQ-5D and the EQ Health and Wellbeing in the General Australian Population. *Value Health*. DOI: 10.1016/j.jval.2024.01.004
- 61 **Lee YY**, Slade T, **Chatterton ML**, **Le LK**, **Perez JK**, **Faller J**, Chapman C, Newton NC, Sunderland M, Teesson M, **Mihalopoulos C**. (2024). Age at first drink and its influence on alcohol use behaviours in young adulthood: Evidence from an Australian household-based panel study. *Prev Med*. DOI: 10.1016/j.ypmed.2024.107898
- 62 Livingstone A, Murphy A, Bucholz J, **Engel L**, Lane K, Spence D, McCaffrey N. (2024). Exploring important service characteristics of telephone cancer information and support services for callers: protocol for a systematic review of qualitative research. *BMJ Open*. DOI: 10.1136/bmjopen-2023-078399
- 63 Lloyd M, Bassi D, **Zomer E**, Ademi Z. (2025). The productivity burden of breast cancer in Australia. *Cancer Epidemiol*. DOI: 10.1016/j.canep.2024.102726

- 64 Lomax KE, Taplin CE, Abraham MB, Smith GJ, Haynes A, **Zomer E**, Ellis KL, Clapin H, Zoungas S, Jenkins AJ, Harrington J, de Bock MI, Jones TW, Davis EA; Australasian Diabetes Data Network (ADDN) Study Group. (2024). Improved Glycemic Outcomes With Diabetes Technology Use Independent of Socioeconomic Status in Youth With Type 1 Diabetes. *Diabetes Care*. DOI: 10.2337/dc23-2033
- 65 Loo C, Glozier N, Barton D, Baune BT, Mills NT, Fitzgerald P, Glue P, Sarma S, Galvez-Ortiz V, Hadzi-Pavlovic D, Alonzo A, Dong V, Martin D, Nikolin S, Mitchell PB, Berk M, Carter G, Hackett M, Leyden J, Hood S, Somogyi AA, Lapidus K, Stratton E, Gainsford K, Garg D, Thornton NLR, Fourrier C, Richardson K, Rozakis D, Scaria A, **Mihalopoulos C, Chatterton ML**, McDonald WM, Boyce P, Holtzheimer PE, Kozel FA, Riva-Posse P, Rodgers A. (2024). Efficacy and safety of a 4-week course of repeated subcutaneous ketamine injections for treatment-resistant depression (KADS study): randomised double-blind active-controlled trial - CORRIGENDUM. *Br J Psychiatry*. DOI: 10.1192/bjp.2024.189
- 66 Majmudar IK, **Mihalopoulos C**, Abimanyi-Ochom J, Mohebbi M, Engel L. (2024). The association between loneliness with health service use and quality of life among informal carers in Australia. *Soc Sci Med*. DOI: 10.1016/j.socscimed.2024.116821
- 67 Mangelsdorf SN, Cagliarini D, **Lee YY, Mihalopoulos C**, Liu V, Valentine L, Bendall S, Koval P, D'Alfonso S, Davey C, Russon P, Phillips J, Gonzalez-Blanch C, Pawsey B, Ryan RM, Parker A, Hetrick S, Rice S, Lederman R, Herrman H, Murray G, Gleeson J, Alvarez-Jimenez M. (2024). A mindfulness-based, cognitive, social, digital relapse-prevention intervention for youth with depression in Australia: study protocol for a randomised controlled trial of Rebound. *BMJ Open*. DOI: 10.1136/bmjopen-2024-088695
- 68 McCaffrey N, Ratcliffe J, Currow D, **Engel L**, Hutchinson C. (2024). What Aspects of Quality of Life are Important from Palliative Care Patients' Perspectives? A Framework Analysis to Inform Preference-Based Measures for Palliative and End-of-Life Settings. *Patient*. DOI: 10.1007/s40271-023-00651-w
- 69 McCaffrey N, White V, **Engel L, Mihalopoulos C**, Orellana L, Livingston PM, Paul CL, Aranda S, De Silva D, Buchholz J, Hutchinson AM, Steiner A, Ratcliffe J, Lane K, Spence D, Harper T, Livingstone A, Fradgley E, Hutchinson CL. (2024). What is the economic and social return on investment for telephone cancer information and support services in Australia? An evaluative social return on investment study protocol. *BMJ Open*. DOI: 10.1136/bmjopen-2023-081425
- 70 McGorry PD, Mei C, Dalal N, Alvarez-Jimenez M, Blakemore SJ, Browne V, Dooley B, Hickie IB, Jones PB, McDaid D, **Mihalopoulos C**, Wood SJ, El Azzouzi FA, Fazio J, Gow E, Hanjabam S, Hayes A, Morris A, Pang E, Paramasivam K, Quagliato Nogueira I, Tan J, Adelsheim S, Broome MR, Cannon M, Chanen AM, Chen EYH, Danese A, Davis M, Ford T, Gonsalves PP, **Hamilton MP**, Henderson J, John A, Kay-Lambkin F, **Le LK**, Kieling C, Mac Dhonnagáin N, Malla A, Nieman DH, Rickwood D, Robinson J, Shah JL, Singh S, Soosay I, Tee K, Twenge J, Valmaggia L, van Amelsvoort T, Verma S, Wilson J, Yung A, Iyer SN, Killackey E. (2024). The Lancet Psychiatry Commission on youth mental health. *Lancet Psychiatry*. DOI: 10.1016/S2215-0366(24)00163-9
- 71 Michalowsky B, **Engel L**, Buchholz M, Weber N, Kohlmann T, Xie F. (2024). Health Fluctuations in Dementia and its Impact on the Assessment of Health-Related Quality of Life Using the EQ-5D-5L. *Value Health*. DOI: 10.1016/j.jval.2024.04.010
- 72 O'Neil A, **Perez J**, Young LM, John T, Turner M, Saunders D, Mahoney S, Bryan M, Ashtree DN, Jacka FN, Bruscella C, Pilon M, Mohebbi M, Teychenne M, Rosenbaum S, Opie R, Hockey M, Peric L, De Araugo S, Banker K, Davids I, Tembo M, Davis JA, Lai J, Rocks T, O'Shea M, Mundell NL, McKeon G, Yucel M, Absetz P, Versace V, Manger S, Morgan M, Chapman A, Bennett C, Speight J, Berk M, Moylan S, Radovic L, **Chatterton ML**. (2024). Clinical and cost-effectiveness of remote-delivered, online lifestyle therapy versus psychotherapy for reducing depression: results from the CALM non-inferiority, randomised trial. *Lancet Reg Health West Pac*. DOI: 10.1016/j.lanwpc.2024.101142
- 73 Ogrin R, Robinson E, Rendell K, Alrababah, S., Fineberg D, Fiddes K, Yerolemu A, Lim, M.H., **Engel L**, Lowthian JA. (2024). 'Connect Local': protocol for the evaluation of a codesigned whole of community approach to promote social connection in older adults. *Frontiers in Public Health*, 12:1342562. DOI: 10.3389/fpubh.2024.1342562
- 74 Pattison E, Papadopoulos N, Fuller-Tyszkiewicz M, Sciberras E, Hiscock H, Williams K, McGillivray J, **Mihalopoulos C**, Bellows ST, Marks D, Howlin P, Rinehart N. (2024). Randomised Controlled Trial of a Behavioural Sleep Intervention, 'Sleeping Sound', for Autistic Children: 12-Month Outcomes and Moderators of Treatment. *J Autism Dev Disord*. DOI: 10.1007/s10803-022-05809-3
- 75 Prior K, Baillie AJ, Newton N, **Lee YY**, Deady M, Guckel T, Wade L, Rapee RM, Hudson JL, Kay-Lambkin F, Slade T, **Chatterton ML, Mihalopoulos C**, Teesson MR, Stapinski LA. (2024). Web-based intervention for young adults experiencing anxiety and hazardous alcohol use: Study protocol for an 18-month randomized controlled trial. *Addiction*. DOI: 10.1111/add.16522

- 76 Rapee RM, Kuhnert R, Spence SH, Bowsher I, Burns J, Coen J, Dixon J, Kotselas P, Lourey C, McLellan LF, **Mihalopoulos C**, Peters L, Prendergast T, Roos T, Thomas D, Wuthrich V. (2024). The Brief Evaluation of Adolescents and Children Online (BEACON): Psychometric development of a mental health screening measure for school students. *J Clin Psychol*. DOI: 10.1002/jclp.23673
- 77 Ratcliffe J, Lay K, Crocker M, **Engel L**, Milte R, Hutchinson C, Khadka J, Whitehurst DGT, Mulhern B, Viney R, Norman R. (2024). Unravelling the Self-Report Versus Proxy-Report Conundrum for Older Aged Care Residents: Findings from a Mixed-Methods Study. *Patient*. DOI: 10.1007/s40271-023-00655-6
- 78 **Ride J**, Cameron L, Jones R, Hall T, Cameron F, White M. (2024). Participation and psychosocial supports in the school setting for children with type 1 diabetes: A discrete choice experiment of carer priority. *Diabetes Res Clin Pract*. DOI: 10.1016/j.diabres.2024.111753
- 79 **Ride J**, Goranitis I, Meng Y, LaBond C, Lancsar E. (2024). A Reporting Checklist for Discrete Choice Experiments in Health: The DIRECT Checklist. *Pharmacoeconomics*. DOI: 10.1007/s40273-024-01431-6
- 80 Rodgers A, Bahceci D, Davey CG, **Chatterton ML**, Glozier N, Hopwood M, Loo C. (2024). Ensuring the affordable becomes accessible-lessons from ketamine, a new treatment for severe depression. *Aust N Z J Psychiatry*. DOI: 10.1177/00048674231203898
- 81 Sampaio F, Nystrand C, Feldman I, **Mihalopoulos C**. (2024). Evidence for investing in parenting interventions aiming to improve child health: a systematic review of economic evaluations. *Eur Child Adolesc Psychiatry*. DOI: 10.1007/s00787-022-01969-w
- 82 Seidler ZE, Wilson MJ, Benakovic R, Mackinnon A, Olliffe JL, Ogrodniczuk JS, Kealy D, Owen J, Pirkis J, **Mihalopoulos C**, **Le LK**, Rice SM. (2024). A randomized wait-list controlled trial of Men in Mind: Enhancing mental health practitioners' self-rated clinical competencies to work with men. *Am Psychol*. DOI: 10.1037/amp0001242
- 83 **Sokolova V**, **Faller J**, Asfia SKBM, **Engel L**. (2024). Assessing the psychometric performance of the EQ-5D-5L among informal caregivers of people with dementia. *Qual Life Res*. DOI: 10.1007/s11136-024-03737-6
- 84 Teesson M, Birrell L, Slade T, Mewton LR, Olsen N, Hides L, McBride N, **Chatterton ML**, Allsop S, Furneaux-Bate A, Bryant Z, Ellem R, Baker MJ, Healy A, Debenham J, Boyle J, Mather M, **Mihalopoulos C**, Chapman C, Newton NC. (2024). Effectiveness of a universal, school-based, online programme for the prevention of anxiety, depression, and substance misuse among adolescents in Australia: 72-month outcomes from a cluster-randomised controlled trial. *Lancet Digit Health*. DOI: 10.1016/S2589-7500(24)00046-3
- 85 **Thai T**, **Engel L**, Eades S, Sanci L, William R, Gregory P, Whitby J, **Mihalopoulos C**. (2024). Content and face validity of preference-based quality of life instruments in indigenous youth experiencing mental health problems: a qualitative study. *Qual Life Res*. DOI: 10.1007/s11136-024-03870-2
- 86 **Thai TH**, Le HND, **Mihalopoulos C**, Austin SB, **Le LK**. (2024). Economic costs associated with unhealthy weight control behaviors among Australian adolescents. *Int J Eat Disord*. DOI: 10.1002/eat.24107
- 87 Tonmukayakul U, Willoughby K, **Mihalopoulos C**, Reddihough D, Mulhern B, Carter R, Robinson S, Chen G. (2024). Development of algorithms for estimating the Child Health Utility 9D from Caregiver Priorities and Child Health Index of Life with Disability. *Qual Life Res*. DOI: 10.1007/s11136-024-03661-9
- 88 Tor PC, Barreiros AR, Cao TV, Dong V, Brettell L, Tuneu CM, Galvez V, Waite S, Sarma S, Branjerdporn G, **Chatterton ML**, Mohan T, Hussain S, Martin D, Loo C. (2024). Why You Should Collect Routine Clinical Data for ECT: A Singapore Story From the CARE Network. *J ECT*. DOI: 10.1097/YCT.0000000000001012
- 89 **Zomer E**, Zhou J, Nelson AJ, Sumithran P, Nanayakkara S, Ball J, Kaye D, Liew D, Nicholls SJ, Stub D, Zoungas S. (2024). The cost-effectiveness of semaglutide in reducing cardiovascular risk among people with overweight and obesity and existing cardiovascular disease, but without diabetes. *Eur Heart J Qual Care Clin Outcomes*. DOI: 10.1093/ehjqcc/qcae063

## 2024 PUBLICLY AVAILABLE RESEARCH REPORT

Kim J, Neville E, Dalli L, **Zomer E**, Birhanu M, Purvis T, Olaiya MT, Talic S, Kilkenny MF, Cadilhac DA. on behalf of the Stroke Foundation. (2024). [Economic Impact of Stroke 2024](#). Stroke Foundation 2024

Published by HEG 'Hub' staff members.

More information is available about the 'spokes' at [Sexual Health](#) and [Acute and Critical Care](#).



2025 Health Economics Group

**CONTACT US**

[heg@monash.edu.au](mailto:heg@monash.edu.au)

[Health Economics Group website](#) Report designed by [Twelve Creative](#)