

# Squirrel\*

\* to move in an inquisitive and restless manner

## FROM THE HOD



**Gene Bawden**  
Head of Department, Design

Although Spring doesn't start until next Tuesday it's definitely in the air; well at least that what my allergies are telling me! It will undoubtedly be a Melbourne Spring (cold and rainy), but it is nice to look forward to longer days, periods of sunshine, and the magnificent gardens that make Melbourne so intensely beautiful in Spring. Even the most overgrown lawns dotted with towering weeds take on a triumphant beauty at this time of year. So despite our stage 4 lock-down, curfews at 8pm, and a continuing 'State of Emergency' nothing gets in the way of us enjoying the simple pleasures that come from lazily enjoying the weather. We just need to do it safely... between 5am and 8pm... no further than 5 kilometres from home. But, as 'Squirrel' continues to prove, being safely isolated mid-pandemic doesn't hinder the creative spirit. This week we celebrate more projects from this semester and the last that continue to challenge, delight and inspire. Enjoy the work... and the sun.

**Right:** Cutting Edge  
by Claudia Kuen  
(Third Year Architecture)

Scroll to Page 4 to see more student works undertaken this semester in the elective 'Contemporary Illustration' (VCO1203) led by Ned Culic and Tracie Grimwood



## WOTTA WATCH

“**Unfolding Florence**” is a unique drama/documentary of the enigmatic Australian textile designer Florence Broadhurst, by acclaimed director Gillian Armstrong. “Armstrong reveals in this spirited and highly original documentary that almost nothing about Florence Broadhurst was at it seemed. When she was found murdered in her studio in 1977, few guessed her age, let alone her origins. Invention and reinvention were the keys to this flamboyant design pioneer, whose signature use of colour and pattern has captured the world’s imagination... Now, more 100 years after her birth, her work has been rediscovered by the world’s leading fashion, interior and homeware designers and her prints are in huge demand internationally. This is a celebration of the many lives of one larger-than-life woman — gutsy, head-strong, imposing, complicated, and almost impossibly glamorous. — KANOPY. TAP THE IMAGE BELOW TO WATCH THE DOCUMENTARY ON KANOPY

» Watch the short SBS interview with the Director, Gillian Armstrong by tapping here



## NED'S SHORT PICK

### Lost in motions

Created by  
Fernando Livschitz

Created using over 800  
laser cut silhouettes.  
Watch through to the  
end for the “how it was  
done” video.

Tap the image to watch  
on Vimeo.



Above: Lost in motions by Fernando Livschitz (<https://vimeo.com/438585692>)

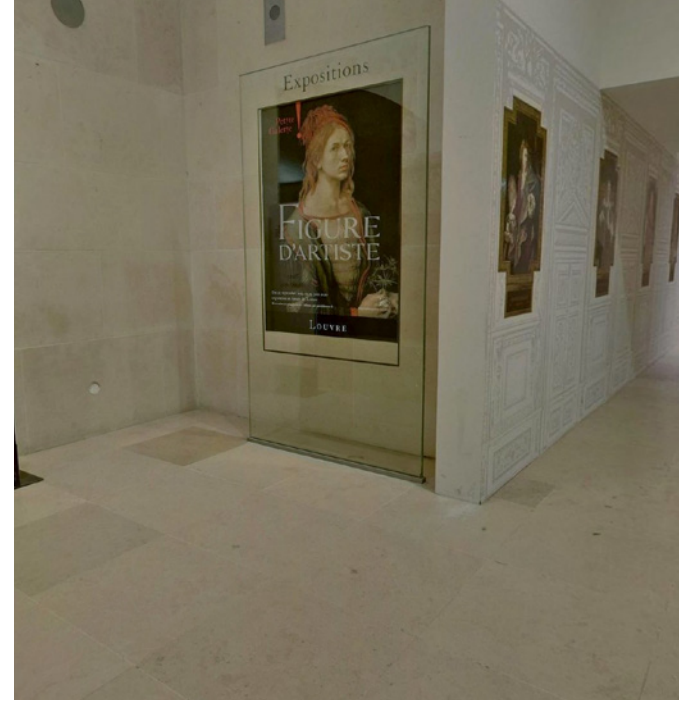


# EXPLORE

Museums and tourist attractions around the world are turning to VR and immersive technologies to 're-open' their doors.

'Virtual tourism', presents a very real future for hard-to-access spaces around the world; and its a future that designers will play a major role in, as the digital experience becomes more sophisticated.

Explore the ones we've highlighted here to see how technologies have already been deployed by sites and museums to allow a global audience to experience their great collections.



**Top:** Pharaoh Ramesses VI Tomb, in Egypt's Valley of the Kings... or on your laptop. Tap the image to connect to the digital experience.

**Above:** The Metropolitan Museum New York, 360° Project. Tap the image to connect to the room collections and use the navigation device in the top left hand corner to see the entire space.

**Far Left:** Read about the new VR experience, "Rebuilding Notre Dame" by tapping the image.

**Left:** Tap the image to visit the Paris Louvre's online tours.

# FOLLOW

Be inspired and seek out those that are collating and collecting the best work for us to observe and critique.



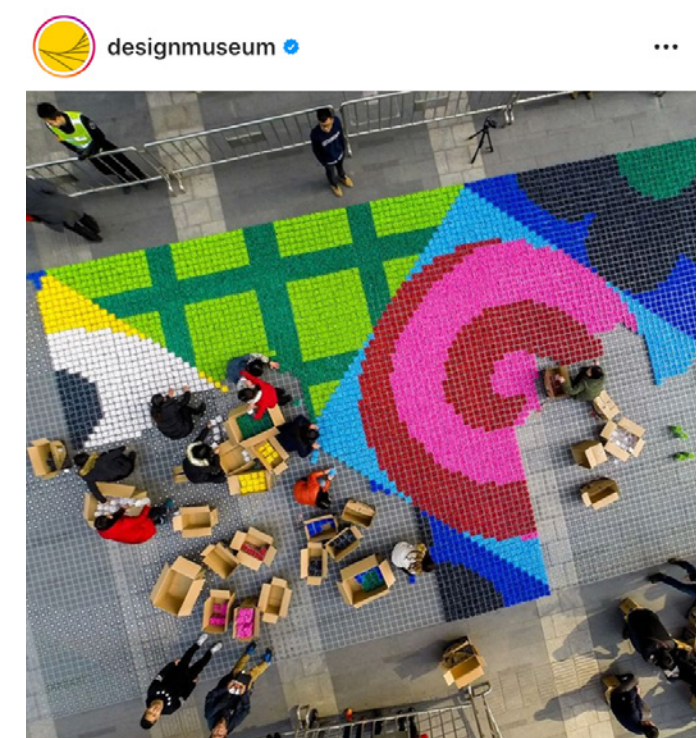
**Powerhouse Museum Sydney**

» Powerhouse site



**Design Museum Copenhagen**

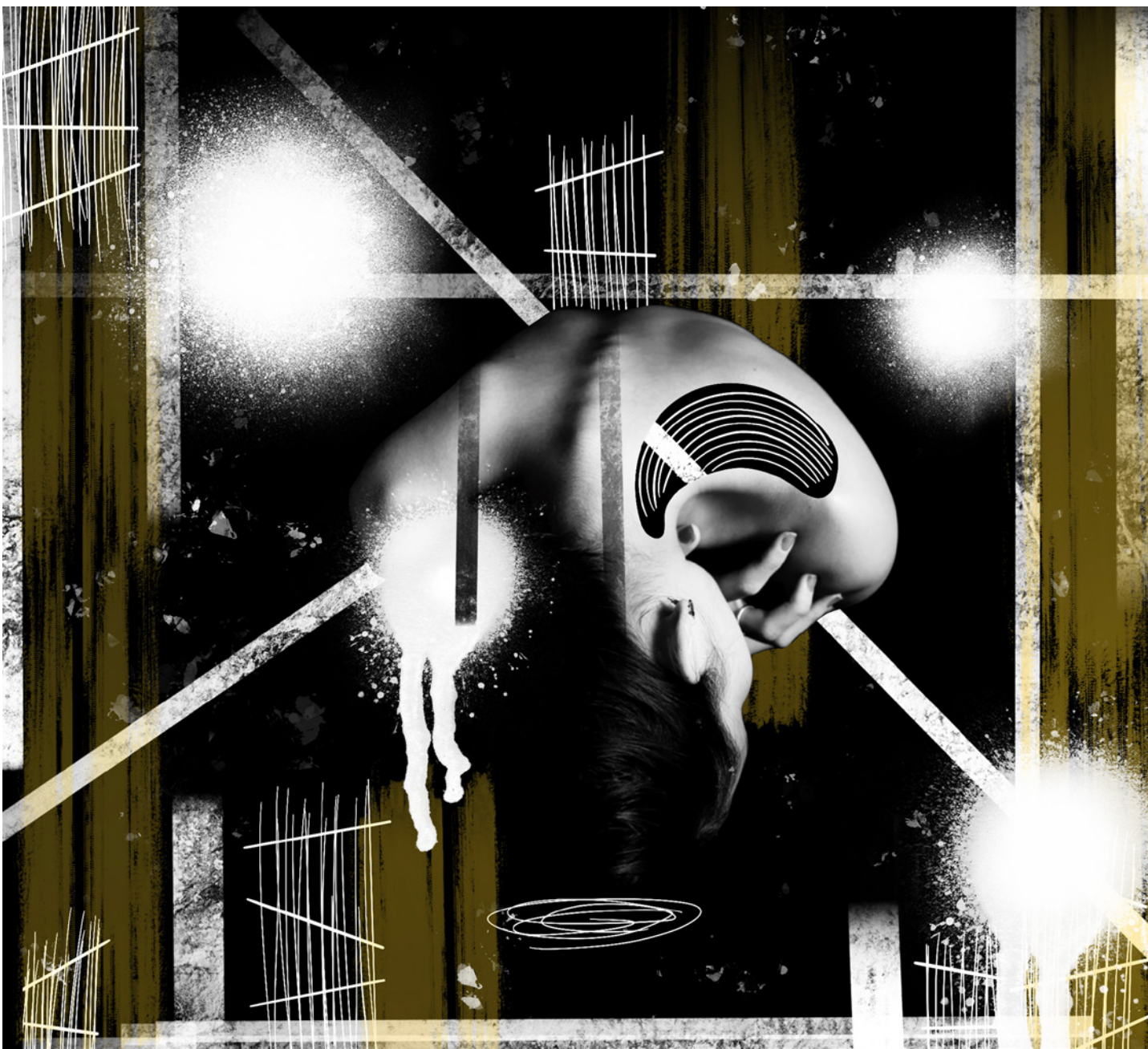
» DM Denmark site



**Design Museum London**

» D. Museum site

When posting remember #monashada #monashdesign #col1001 #monashspatial #monashindustrial #monashcommdes



## Contemporary Illustration

Lecturers:  
Ned Culic and  
Tracie Grimwood

**The Cutting edge project** asks students to re-imagine existing imagery through the expressive use of collage, be it hand-generated or digitally conceived. These images were the first project produced in Contemporary Illustration (VCO1203) in Semester 2 this year. We'll be revealing more incredible image making from this elective in the next issue of 'Squirrel'.



**Top:** Feng Haowen  
(Second Year  
Communication Design)  
**Middle:** Tran Linh  
(Second Year  
Communication Design)  
**Left:** Sienna  
Fernando (First Year  
Communication Design)



**Don't forget about our Designer Mask competition.** We're keen to see how you put your creativity to work, just as designers around the world have.

Whether its real and photographed or simply a rendering in Photoshop we want to see how you take something that was once an unfamiliar and uninspiring piece of attire to one that oozes personality and creativity.

Simply email an image with your name to [gene.bawden@monash.edu](mailto:gene.bawden@monash.edu) before September 4, and we'll publish them and pick the ultimate winner!

**Top:** Sustainable fashion and Corona Virus come together in French Designer Marine Serre's latest show in Paris. Tap the image to connect to her site, and in particular to her collection and short film titled "Radiation"

**Middle:** Engineer Mario Milanesio poses with a snorkelling mask that he added respiratory valve fittings to in Savigliano, Italy. He designed and produced them with a 3-D printer. (Marco Bertorello/AFP/Getty Images)

Tap the image to connect to CNN's world of creative face masks

**Right:** knitwear designer ýrúrarí jóhannsdóttir witty and surreal quarantine experiment. Tap the image to connect to designboom to see the rest.

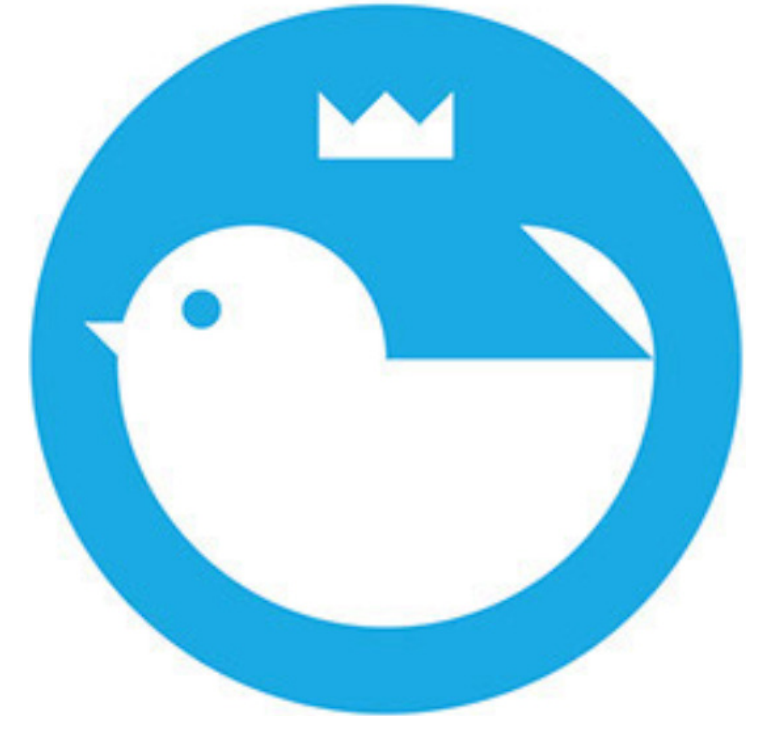




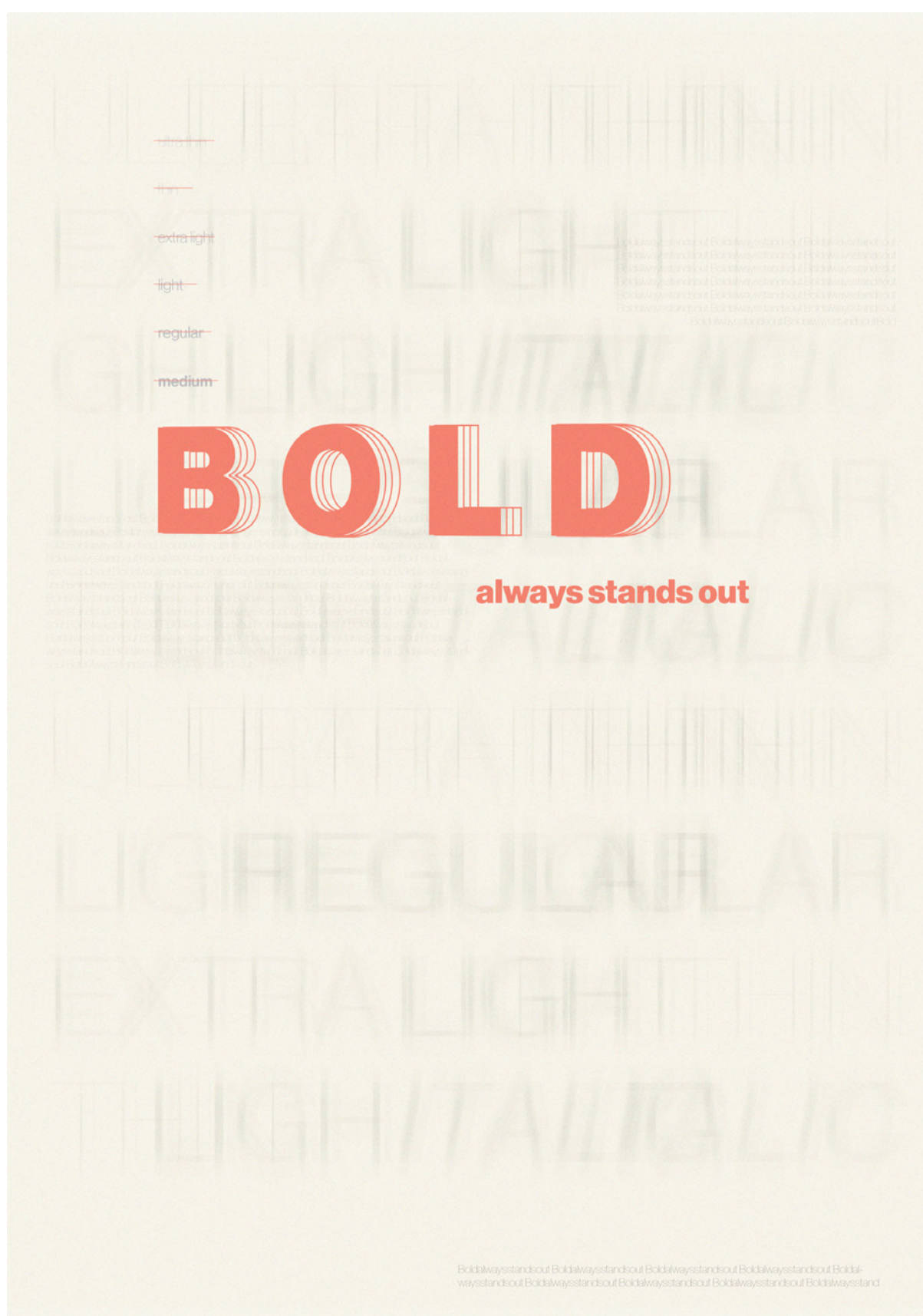
## The Design Files

Podcast: TDF Talks With Jeremy Wortsman from The Jacky Winter Group (55:46)

Jeremy Wortsman (right) is the founder of illustration agency The Jacky Winter Group, Lamington Drive Gallery and **JWGYTB podcast**. Tap the 'Talks' logo to connect to this and all the Design Files podcasts, and tap the Jackie Winter Group logo to connect to their site.



**Betty Gu**  
Design/IT  
Double Degree  
Communication Design Studio 2



Communication Design and IT Double Degree student Betty Gu recently shared one of her (CDS1002) Design Studio projects with us. This project required Betty to demonstrate the 'anatomy' and language of type through a series of typographic posters. In the featured designs Betty has explored the components of the lowercase 'g' (the 'ear' and the 'loop'), and demonstrated why **bold** type always stands out! If you have work you would like to share in 'Squirrel' please send it through to [gene.bawden@monash.edu](mailto:gene.bawden@monash.edu)



## From the State Library

### Above: Magic Man

Join magician and ' author Nicholas J Johnson to learn some magic tricks – as well as the science behind the magic! Just tap on the image of Nicholas above to connect to his videos on the State Library of Victoria website. After all magic tricks are another way to while away lock-down!



### Left: Future Founders Festival 2020 23-27 September

**Australia's first digital startup festival for international students, innovators and founders has arrived.** Access a free, multi-day event by business leaders from the international student community featuring workshops, expert panels, pitching and funding opportunities.

Pitch your own startup to an expert panel for the chance to win your share of \$3500 to help kickstart your business. Learn how to design, build and pitch a project, then put those skills into practice by joining a 48-hour Hackathon.

Don't miss this opportunity to start building your future startup career. **Register today and get ready to be inspired. Just tap here.**



With submissions now closed for the ReelOzInd! Australia Indonesia Short Film Competition 2020, the organisers are looking ahead to the excitement of sharing the best of them with you at their online Festival Premiere on Sunday 4 October 2020.

After an excellent response to the call for submissions the (star-studded!) Jury is now at work selecting the best short films from across the categories: documentary, fiction, animation and young filmmakers (13–18 years).

To keep up to date check their website regularly.

**Tap here to connect.**





**Hayley Sinnatt:**  
**Footscray**  
 Communication  
 Design Studio 4  
 'Observation'  
 Lecturers:  
 Kasia Ilczyszyn  
 and Dane Kerr



**Kasia and Dane asked students to investigate 'place' by documenting sensory stimulations and re-interpreting this into visual language. This is Hayley's response.**

"Upon spending some time exploring the area, I observed considerable contrasts between the industrial, residential and natural environments in this location. Each of these environments are in close proximity to each other, but hold unique visual and emotional characteristics that I attempted to capture through this series of work.

Walking down the main street and into the industrial area, I noticed boarded up windows, graffiti tagged front doors and faded posters decorating the shopping strips. Construction cranes hung overhead, and modern apartment buildings towered over converted factory infrastructure. The sounds of trains rolling past and heavy traffic on the highway faded away as I crossed into the residential area.

Here the air was peaceful and quiet, with native trees shadowing red bricked roofs, restored Victorian era buildings, and tangled power-lines. A few locals were busy tending to their well-kept veggie gardens and flower boxes to seek fresh air in isolation. A stray cat squeezed through a white picket fence, and blooming red gums lined the empty streets.

My last visit was to Footscray Park, and I felt transported out of the Northern suburbs almost entirely. Stone paths led through a thick wilderness of native flowers, pine trees and shrubby undergrowth, with the river stretching across grassland and open space.

I wanted to capture the contrasts between these three different environments through a series of hand drawn illustrations, which depict both the visual characteristics and emotional experiences of different Footscray locations"

— Hayley Sinnatt



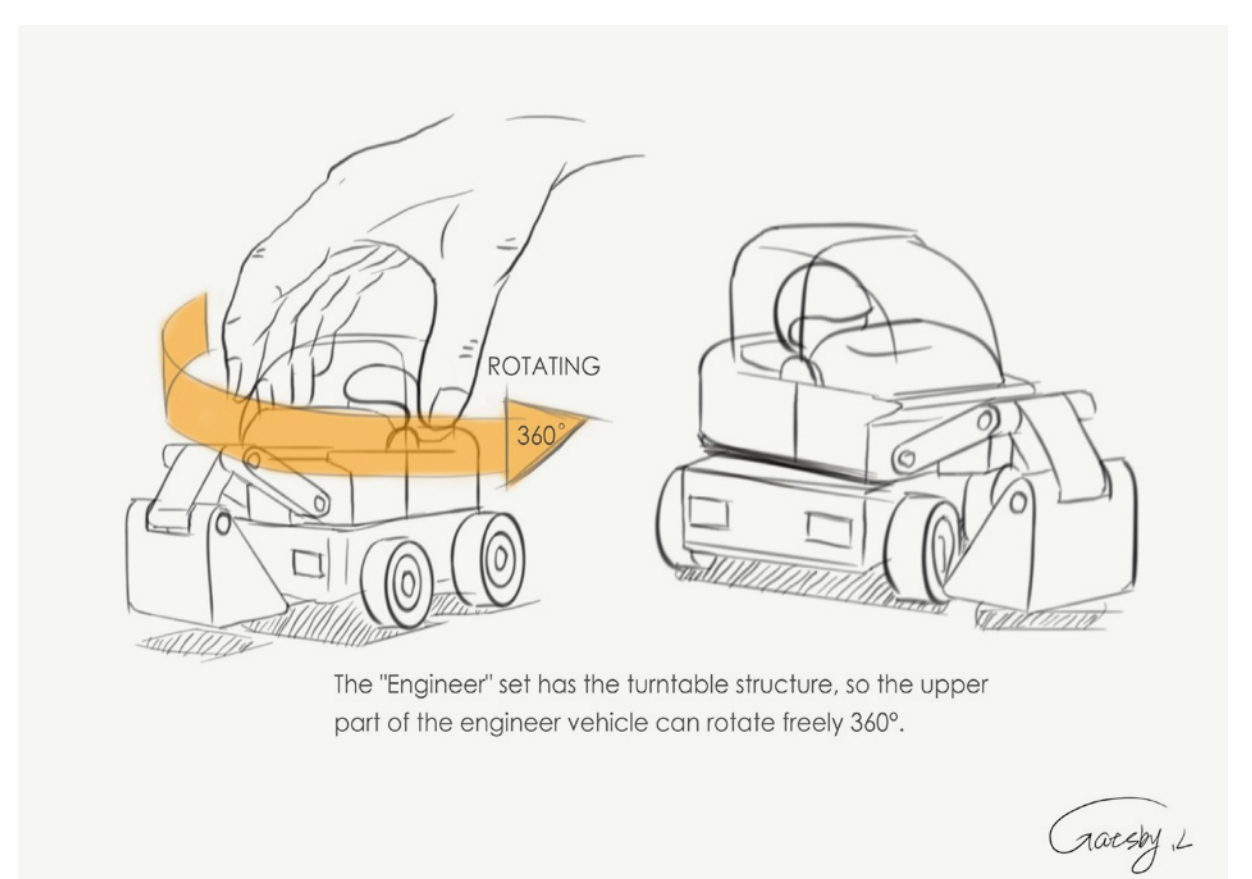
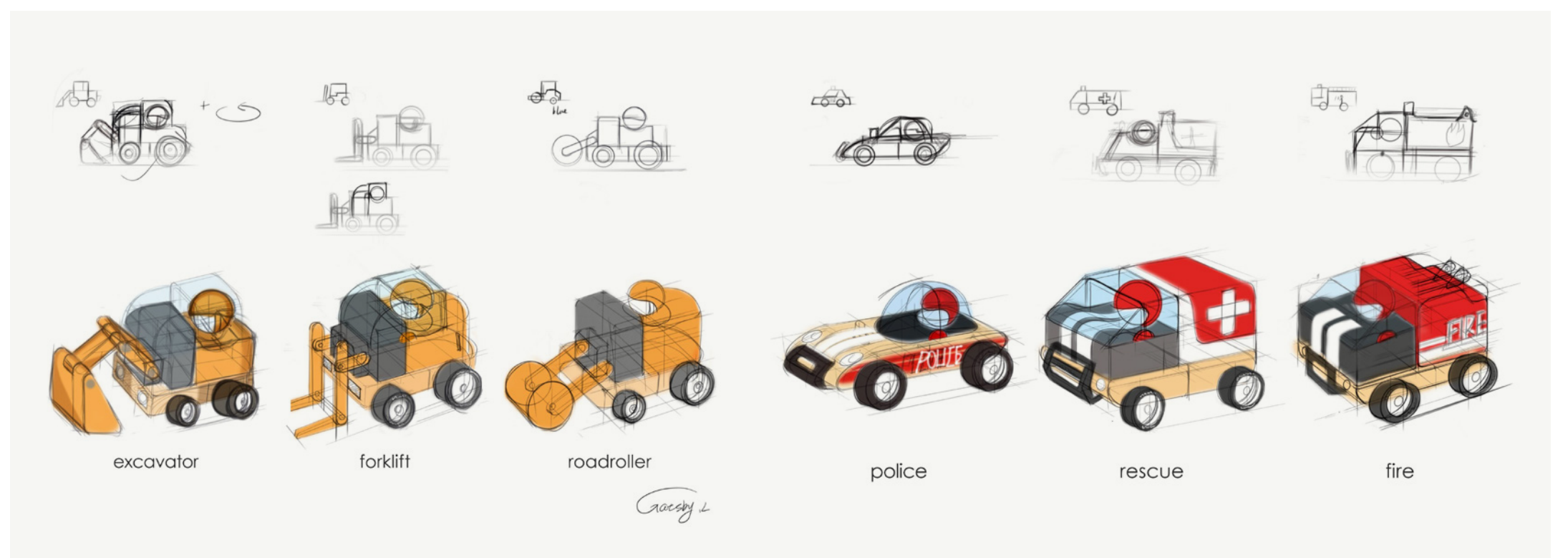
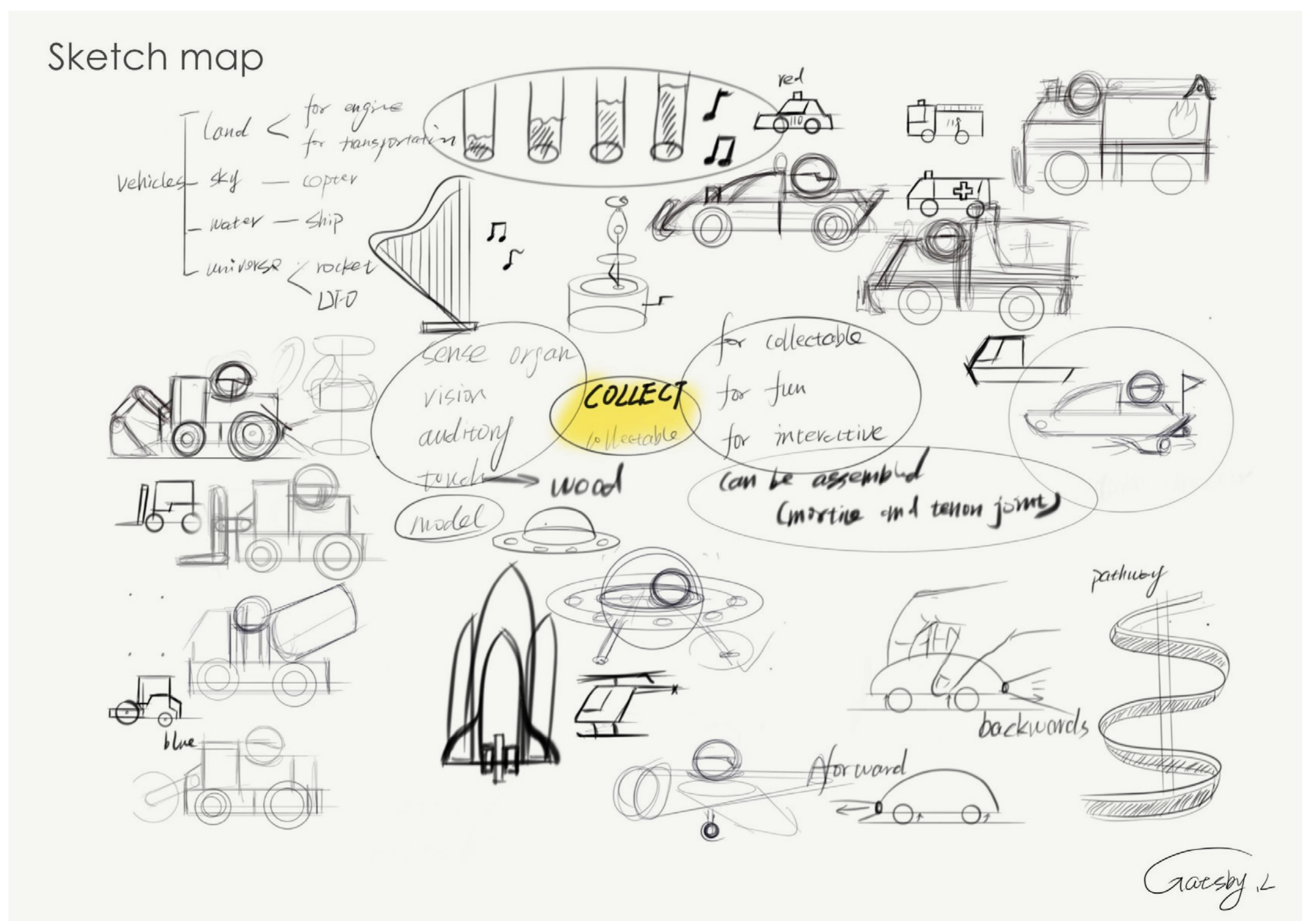


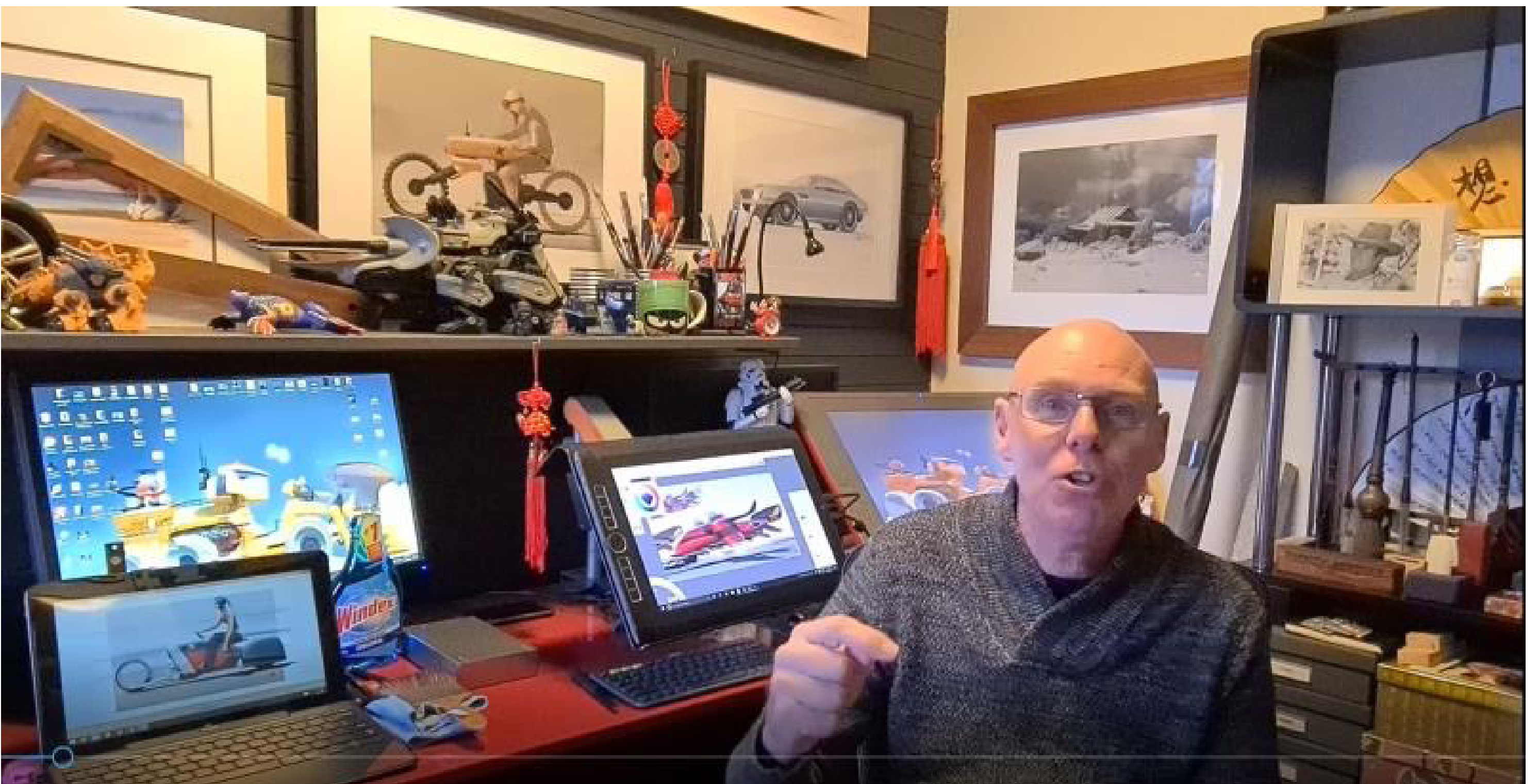
This week 'Squirrel' is showcasing another project (and its extensive development work) from our Master of Industrial Design Degree in Suzhou.

Thanks to Bernie and Ian who continue to deliver the program remotely from Australia with incredible results. Swipe to the next page to see Bernie in action delivering a remote Wacom tutorial in real time.

**Collectable Toy Vehicle designs by Gatsby**

These are safe ergonomic toys suitable for small children. The parts are modular allowing for children to interact with the pieces and reconfigure the vehicles to their own bespoke design. They also contain a small light that acts as a night light.

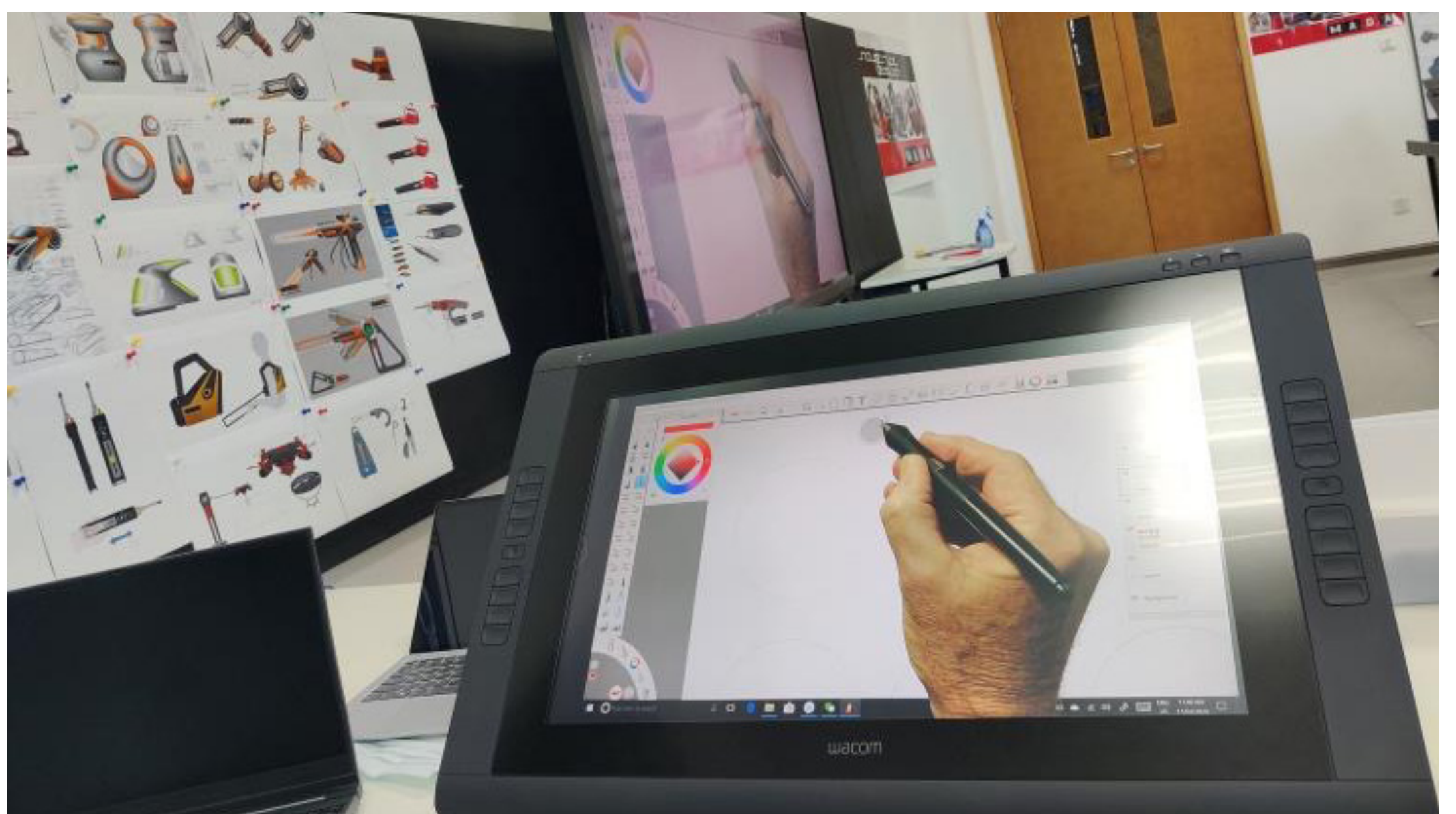
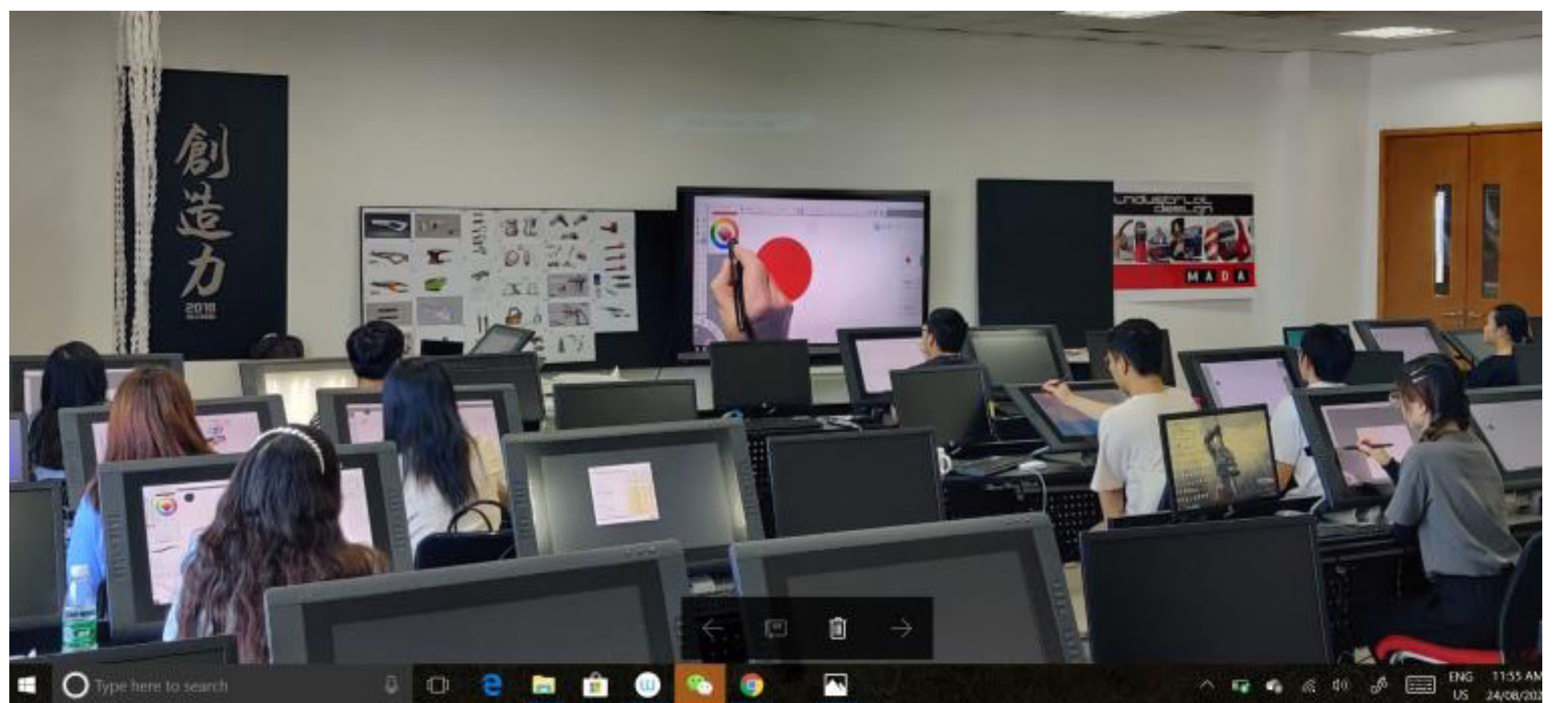




## MORE SUZHOU

The Suzhou campus has cautiously started welcoming back the Master of Industrial Design students to their campus. But, travel restrictions are still in place so the teaching staff continue to deliver digital content via video and WeChat. Here we see Wacom-Maestro Bernie Walsh demonstrating and explaining various techniques to a class in China from Australia.

**Remember, you can follow Bernie's work on Instagram. Tap here to follow.**



## Website of the week

# Class of 2020 (UK)

[www.creativeboom.com](http://www.creativeboom.com)

Isolation and lock-down has impacted on Art and Design education across the globe. But not to be beaten by remote engagement, the Northern Hemisphere Design schools who have already completed their degrees have uploaded their graduating exhibitions to digital platforms. Creative Boom has curated all the UK Design school shows into one location. At the end of the year we will host our own MADA Now 2020 exhibition as a digital experience, and we look forward to showing the world what we can do!

Tap the panel to connect to Creative Boom.

FORWARD —  
Graduate Show  
Birmingham

Birmingham City University online exhibition



## MADA TUBE

Show reels are a familiar way through which designers showcase and compile their motion design. Tap on the image above to watch Kea Tokley-Higg's 2019 show reel that was presented as part of **MADA Now 2019**. The Monash Art Design & Architecture YouTube channel has lots of videos to view. Tap the icon, right, to connect.

## BOOK REVIEW



### Designing Disability Symbols, Space, and Society By Elizabeth Guffey

“Designing Disability traces the emergence of an idea and an ideal – physical access for the disabled – through the evolution of the iconic International Symbol of Access (ISA). The book draws on design history, material culture and recent critical disability studies to examine not only the development of a design icon, but also the cultural history surrounding it...

Yet despite the social progress which is inextricably linked to the ISA, a growing debate has unfurled around the symbol and its meanings. The most vigorous critiques today have involved guerrilla art, graffiti and studio practice, reflecting new challenges to the relationship between design and disability in the twenty-first century” — [www.bloomsbury.com](http://www.bloomsbury.com)

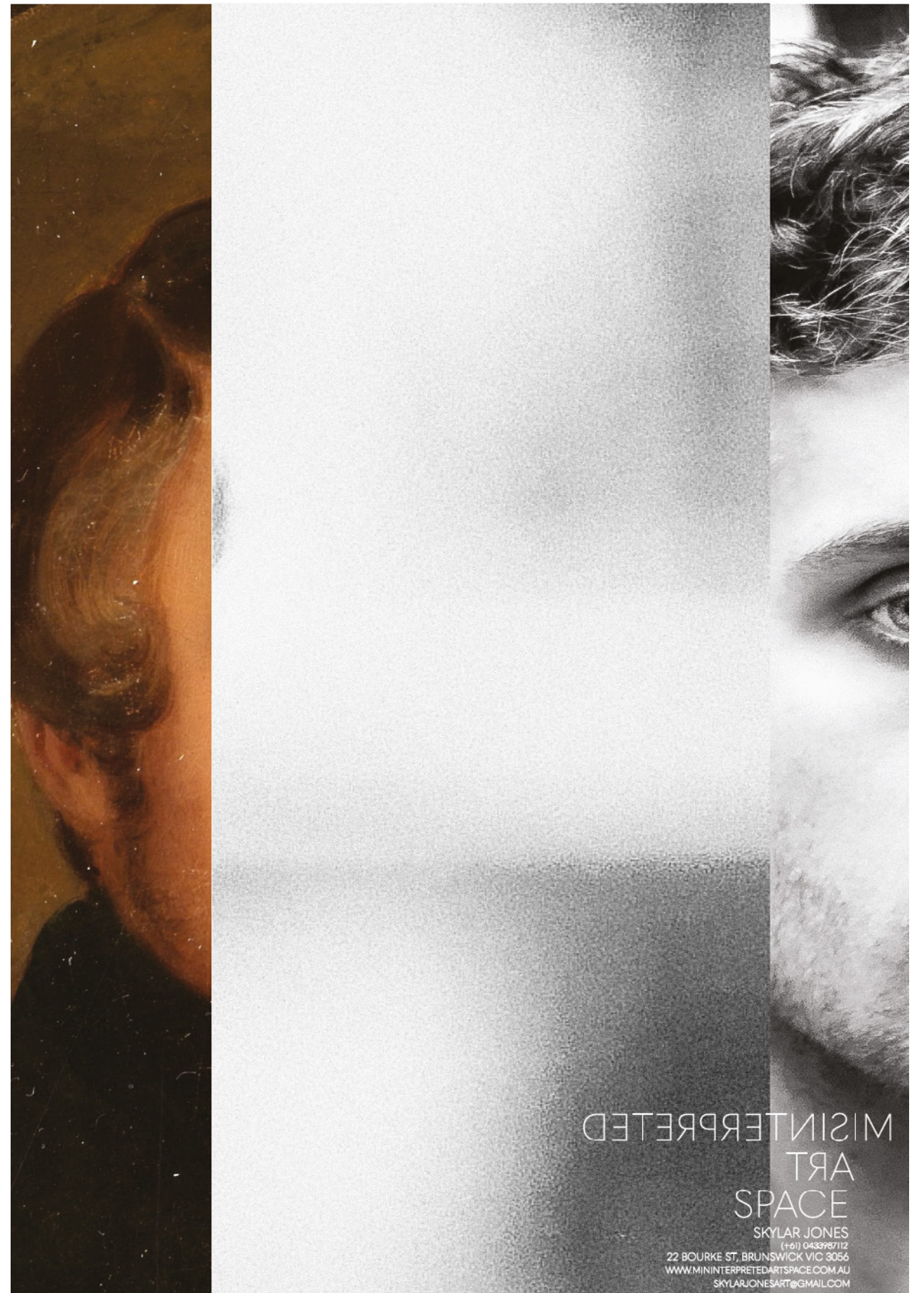
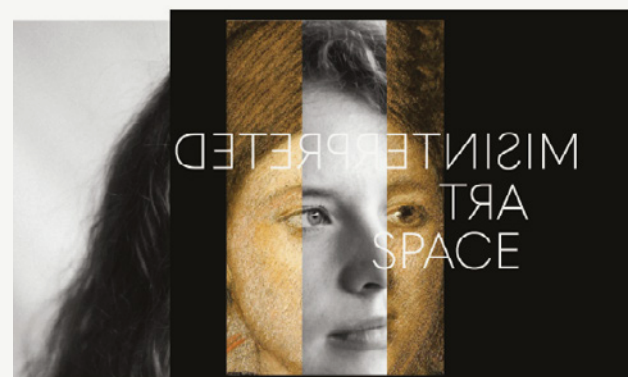
**Designing Disability is available through the Monash Library as both a physical and online publication.**



**Communication Design Studio 3**  
**Museum Identity**  
 Lecturer:  
 Janet Mills



This project required students to rethink what makes a contemporary brand strategy. No longer can organisations just rely on a well-designed logo, but equally what emotional connection can be made with their audience through image, motion and interactivity, both digital and analogue. The project also challenges the 'museum' archetype, shifting it from a dusty graveyard for old stuff, to ones with connections to shared personal experiences.



**Top:** Madeleine Barette: 'Misinterpreted Art Space'. **Above:** Annabel Isom: 'Museum of Unfinished Objects'...perhaps we all have some contributions to make to that collection.

# DESIGN STAFF WHO'S NEW



**Dr Xavier Ho**  
Interaction Design

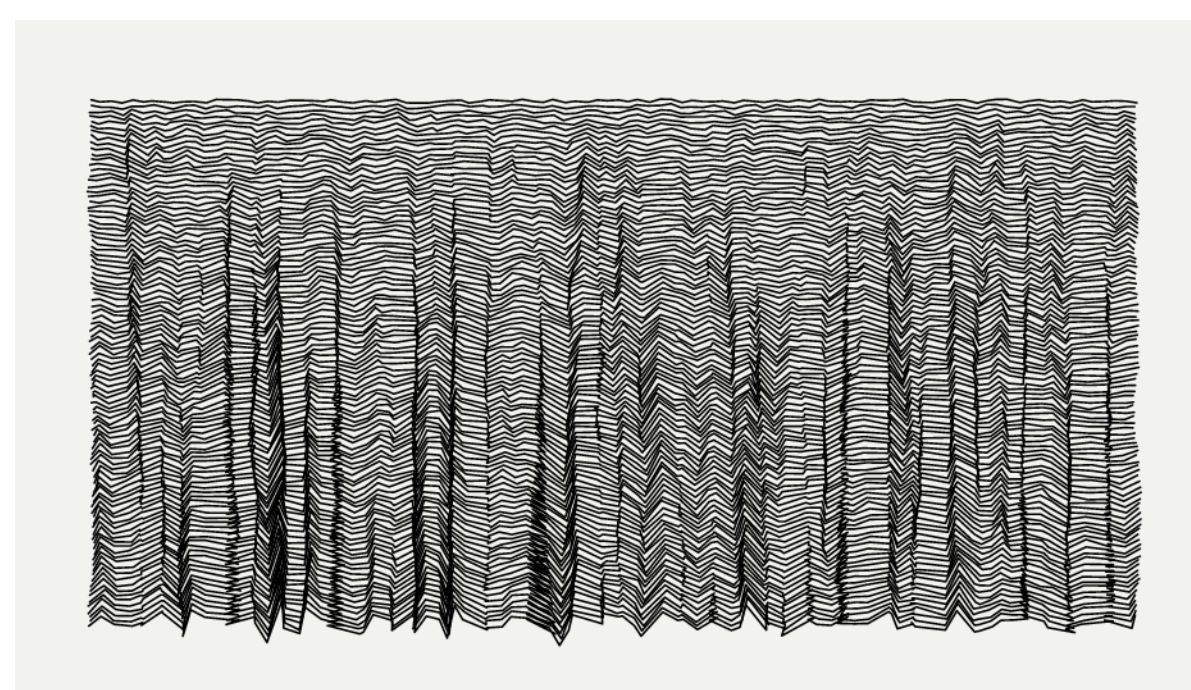
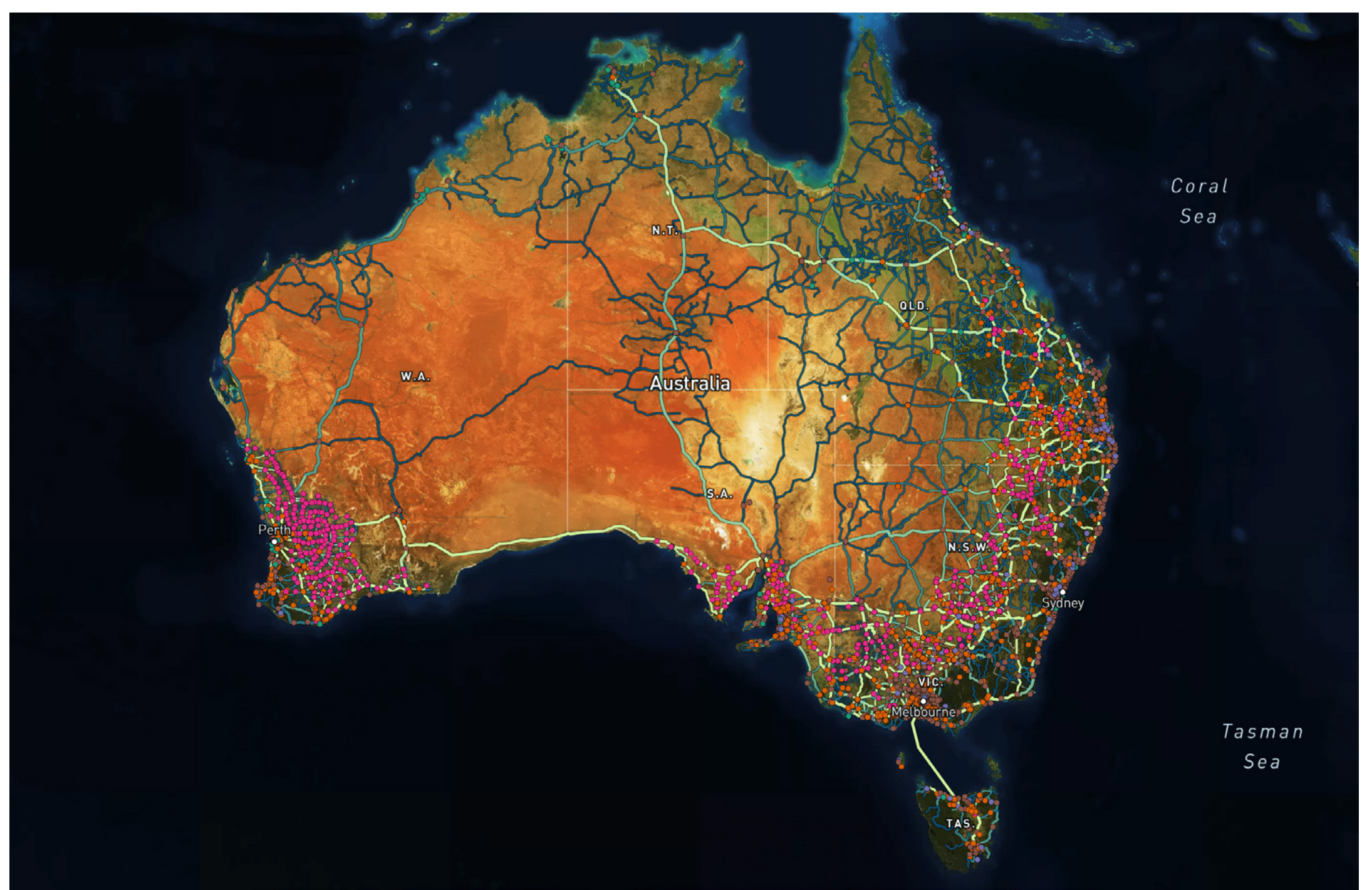
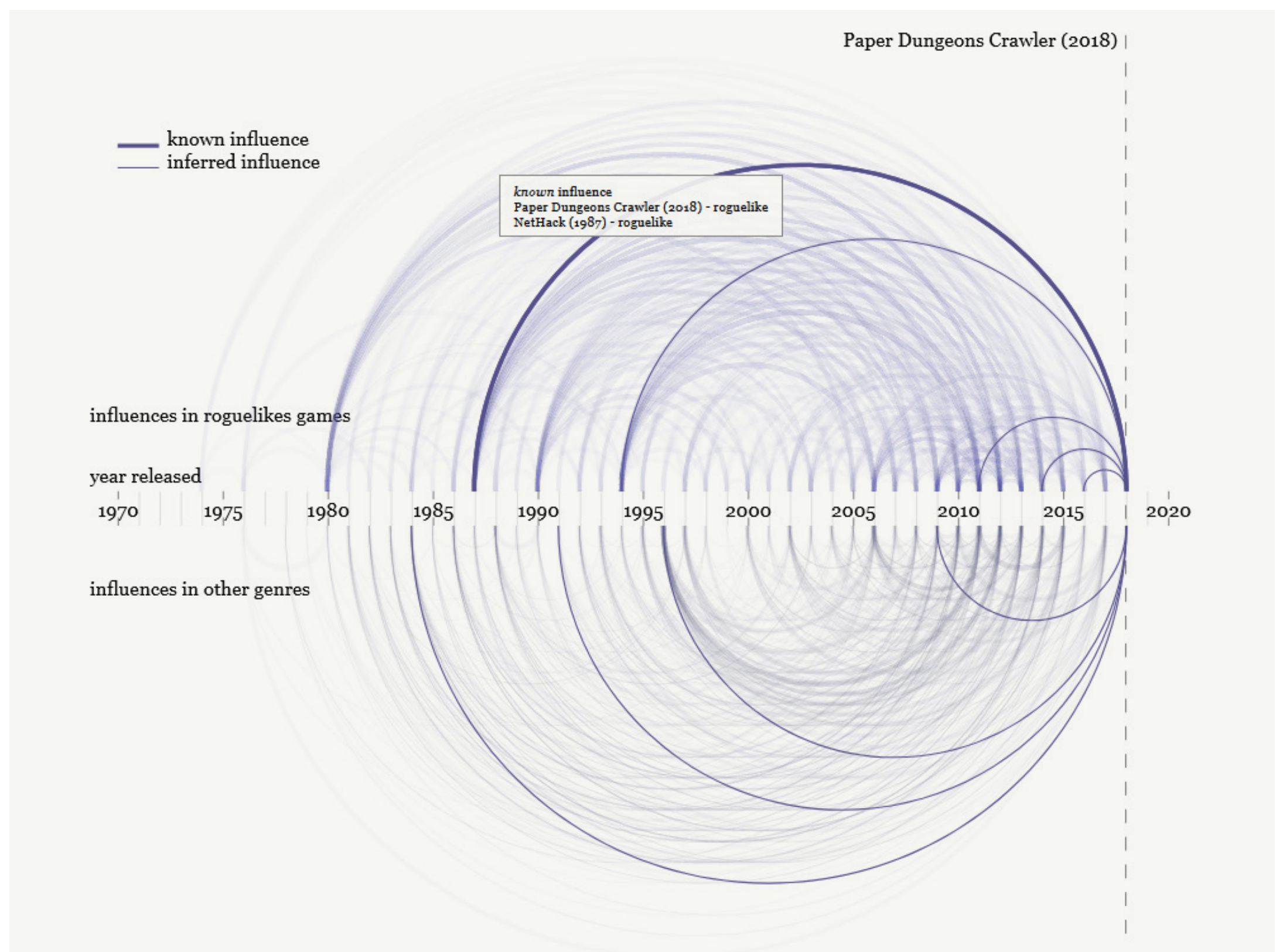
Xavier Ho joined the Design department a month ago. He is the creator of Roguelike Universe, Smoke and Fire, and other interactive data visualisations. He is a hybrid design and software practitioner-researcher.

Prior to joining the Monash family, Xavier led the Graph Visualisation Engineering team at CSIRO designing visualisations for machine learning on networked data. He also served as an individual contributor for UX design and scientific visualisation. His most notable contribution was for trailblazing the web version of Transport Network Strategic Investment Tool (TraNSIT), which was then recommended by the Office of Northern Australia, and won the Australian Government's Agricultural Competitiveness White Paper.

Xavier has over seven years of industry experience in co-designing interactive data visualisation tools for research, government, businesses, and the everyday citizen. He was the lead front-end engineer on CSIRO's early algal bloom detection tool, and CSIRO Data61's Graincast, a grains yield forecasting platform. He is a frequent conference contributor, and he also contributes to various open source software projects.

Xavier possesses a multidisciplinary mindset in both practice and academic inquiry. His research interests include data visualisation, design research, game studies, and interactive computer graphics.

Xavier served as a major working committee member of Pride@CSIRO, whose work was recognised by the inaugural CSIRO Diversity and Inclusion Medal by raising awareness and making institutional changes for LGBT+ equality at CSIRO.



**Top: RoguelikeUnivers.** Data visualisation of videogame influence in the roguelike genre.  
**Middle: TraNSIT.** Map visualisation for Australia's transport network and enterprises with CSIRO TraNSIT.  
**Above: HoloLens.** Xavier's colleague using the Microsoft HoloLens to view a bushfire smoke simulation, with Smoke and Fire in the background at the Monash MASSIVE Visualisation Lab.  
**Left: Curtain.** Generative creative art written with Elm, designed for penplotters.

To find out more about each project click on the links in pink above or head to Xavier's [website](#). You can also follow him on [Twitter](#)

**Online Monash Open Day is  
this weekend. Tap here to register**

Saturday 29 August: 10:00am—2:00pm

Sunday 30 August: 10:00am—2:00pm

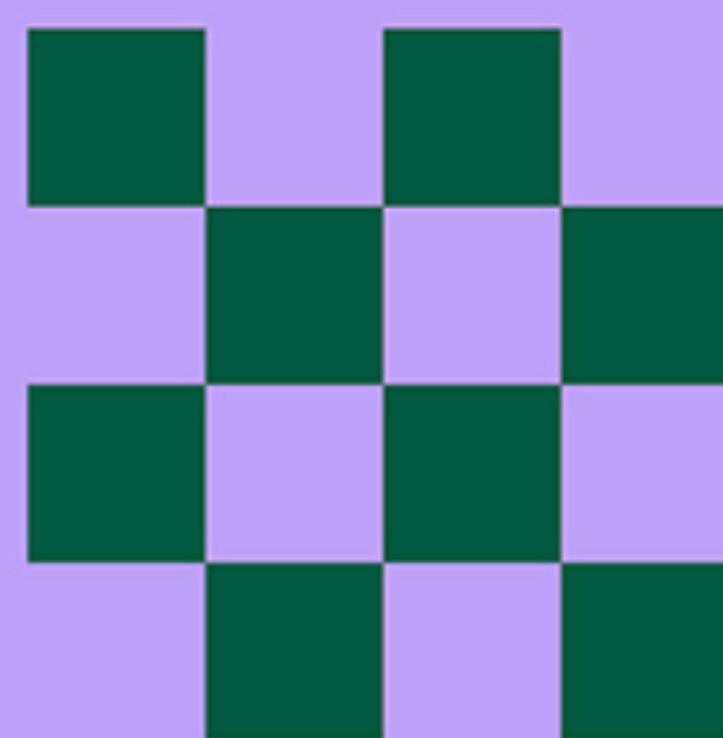
Monday 31 August: 4:00—7:00pm



## *EVENTS*

# AGDAVic Folio Review

**AGDA**



**EVENTS**

**If you are in the final year of your Communication Design degree sign up for the AGDA folio review, and secure some industry feedback on your work, and the direction of that all-important final folio.**

Registrations open today (Friday August 28), **so tap here to connect to the site.**

The cost is free if you're an AGDA member and only \$5 if you're not. Considering signing up? **Tap here to learn more about the benefits of AGDA membership.**