

Squirrel*

* to move in an inquisitive and restless manner

FROM THE HOD



Gene Bawden
Head of Department, Design

Welcome back—or welcome to—Monash Design for 2021. We're excited to share the new year's adventures with you through 'Squirrel' and look forward to seeing your work populate its pages over the coming months. This year 'Squirrel' is being student-led, and I'd like to thank Kimia Kayani, Second Year Communication Design, for her role as Assistant Art Director, and Ned Culic for overseeing content and keeping production on track. On reflection 2020 presented us with challenges we had never faced before, but by the year's end we had learned just how effectively we could engage with design and design education to embrace, rather than dread, online and remote processes. As 2021 is the Chinese Year of the Ox—a symbol of determination and hard work—its seems appropriate that we can draw on what we learned last year to face the continued challenges of 2021, knowing that the strength that got us through that year, will get us through this one too. Enjoy your journey with us, and we look forward to seeing you, in person on campus, or online in Zoom.

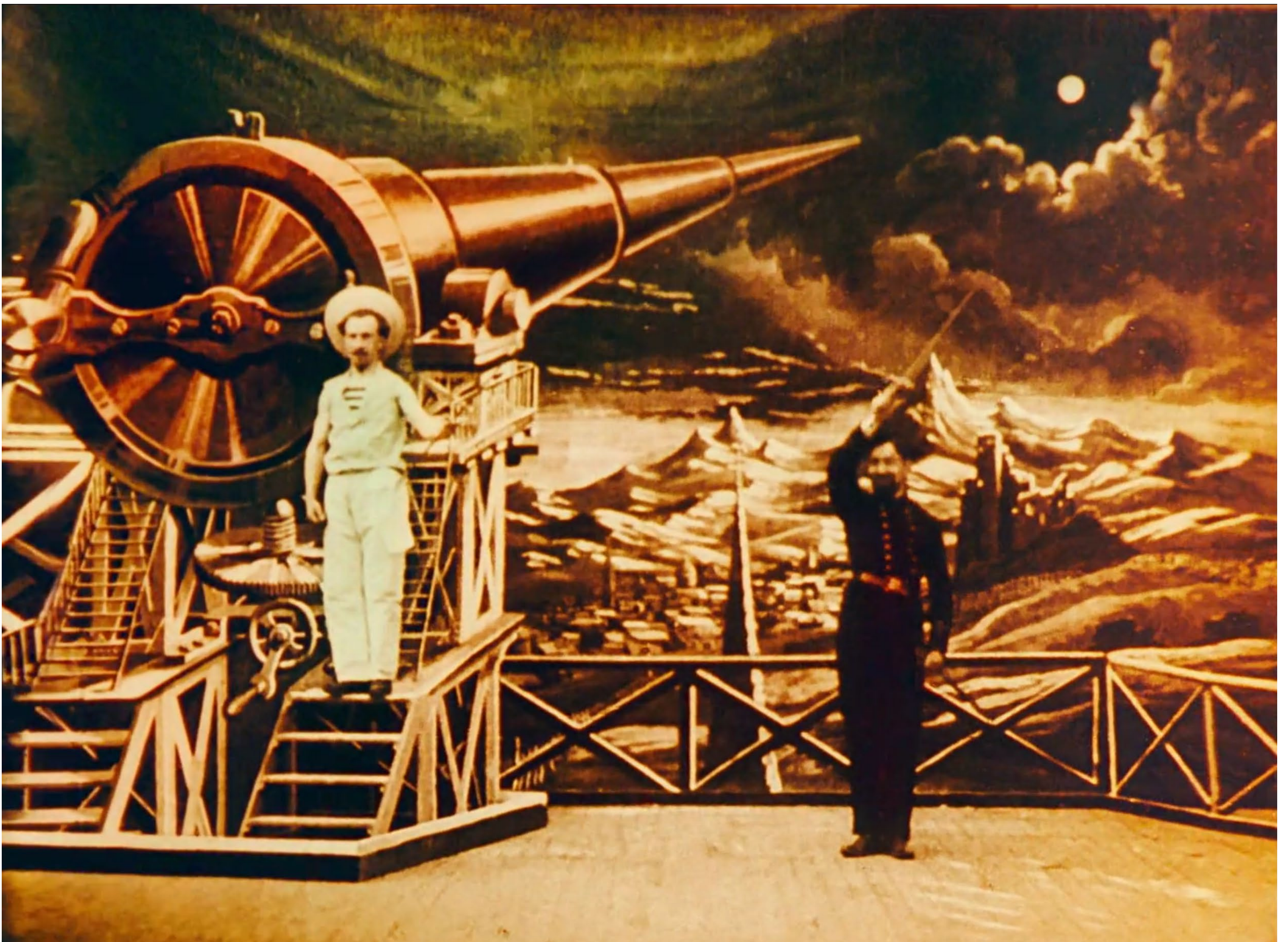
Year of the Ox

The years of the Ox in the Chinese Horoscope are: 1913, 1925, 1937, 1949, 1961, 1973, 1985, 1997, 2009, and 2021. This year is going to be lucky and also perfect to focus on relationships, whether we are talking about friendships or love. In the Chinese Zodiac, the Ox is very hard working and methodical. 2021 is going to be a year when work will get rewarded, and those zodiac signs who are lucky in terms of money this year will be the ones that will make a considerable effort. The Yin energy, specific to the Chinese zodiac sign of Ox, will be quite poignant. This is going to be a year when we will fully feel the weight of our responsibilities, a year when it is necessary to double our efforts to accomplish anything at all.
— thechinesezodiac.org



WOTTA WATCH

The material for “A Trip to the Moon” is sourced from a restored colour version that had been considered lost for several decades and is presented with an original soundtrack by the French band, AIR. In 2010, three experts in worldwide film restoration launched the most complex and ambitious restoration in the history of cinema, over 12 years, using advanced digital technologies to reassemble and restore the fragments of the 13,375 frames. The restoration print premiered at the Cannes Film Festival in 2011. Now, one of the most technically sophisticated and expensive restorations in film history, “A Trip to the Moon” can thrill home video audiences in its original 1902 colours. — www.kanopy.com
Tap the image below to watch



NED'S SHORT PICK

Face à l'inceste
by Vincent Gibaud

This animation in a simple and yet powerful language seeks to draw attention to the legislation in France about children sexual abuse. In France, a child who reports sexual abuse by a family member must testify in court that they did not give their consent. This film calls upon French citizens to help change the law by signing a petition.



Above: Face à l'inceste. Directed by Vincent Gibaud Produced by Jungler for Publicis Conseil. Tap the image to connect



Caulfield Library has collections strengths in Art, Design and Architecture, Business and Economics, Information Technology, Health Sciences, Psychology and Social work. But, did you know it also gives you access to music collections from different time periods and the sheet music if you play? To find out more, click on the images, above right.

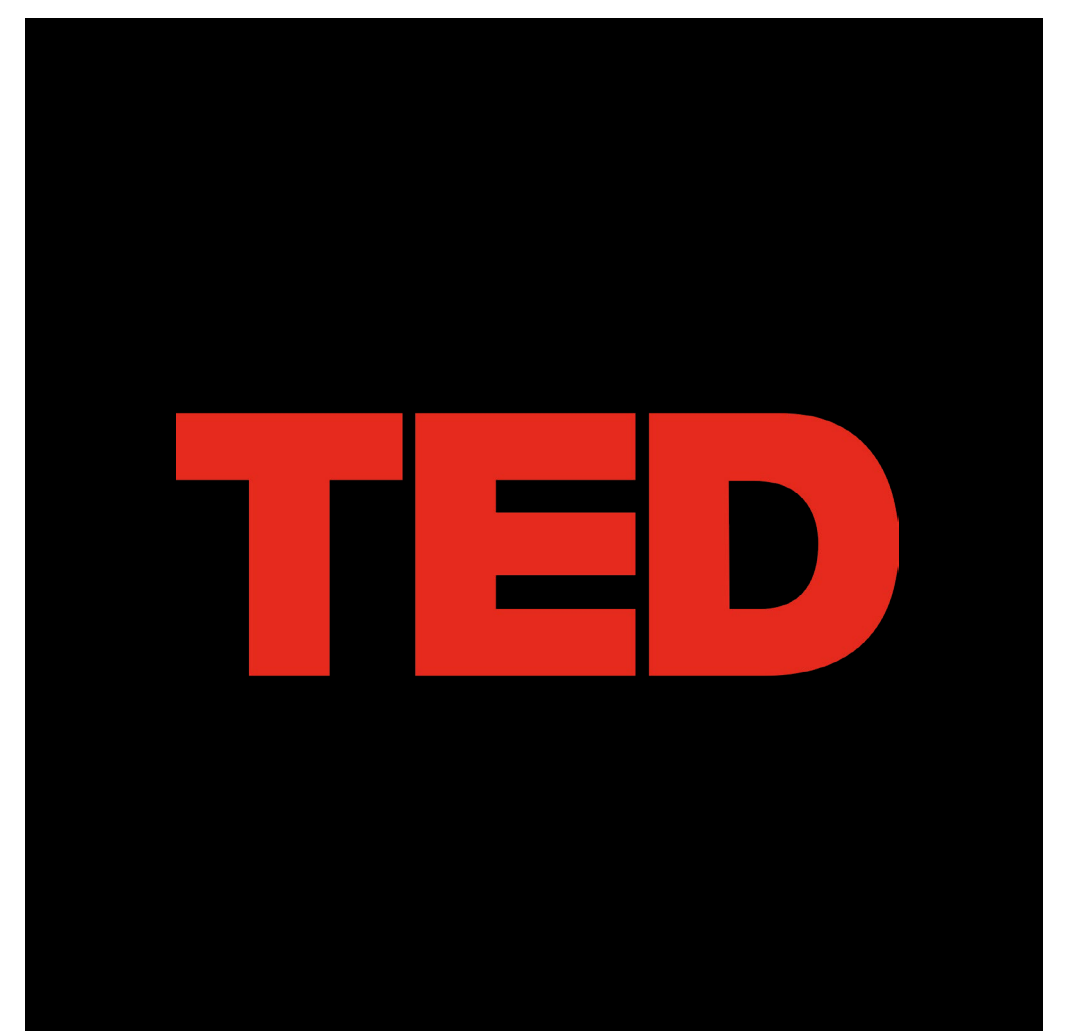
Through the Library your Authcate password gets you access to many resources, including LinkedIn Learning. Tap the logo on the right and sign in with your Monash email. You can also get access to the best talks and performances from past TED (Technology, Entertainment, Design) conferences. Again, just tap on the TED right.



Alexander Street



Australian Jazz Real Book



**International Women's Day
Monday March 8**

International Women's Day is a global day celebrating the social, economic, cultural and political achievements of women. The day also marks a call to action for accelerating gender parity. Across the globe groups are coming together to celebrate women's achievements and rally for women's equality. As designers we have an obligation to consider gender in everything we do; to ensure what we design and put in the world enables and celebrates equality and respect.

To read more about International Women's Day, tap the image, left.



Magazines continue to be a rich source of inspiration in design. Here are some of the many that are worth following. Click on each image to view their instagram account.

Graphicdesignblg
work of the best designers around the world.

Designspective
Tools and tips about social media and design.

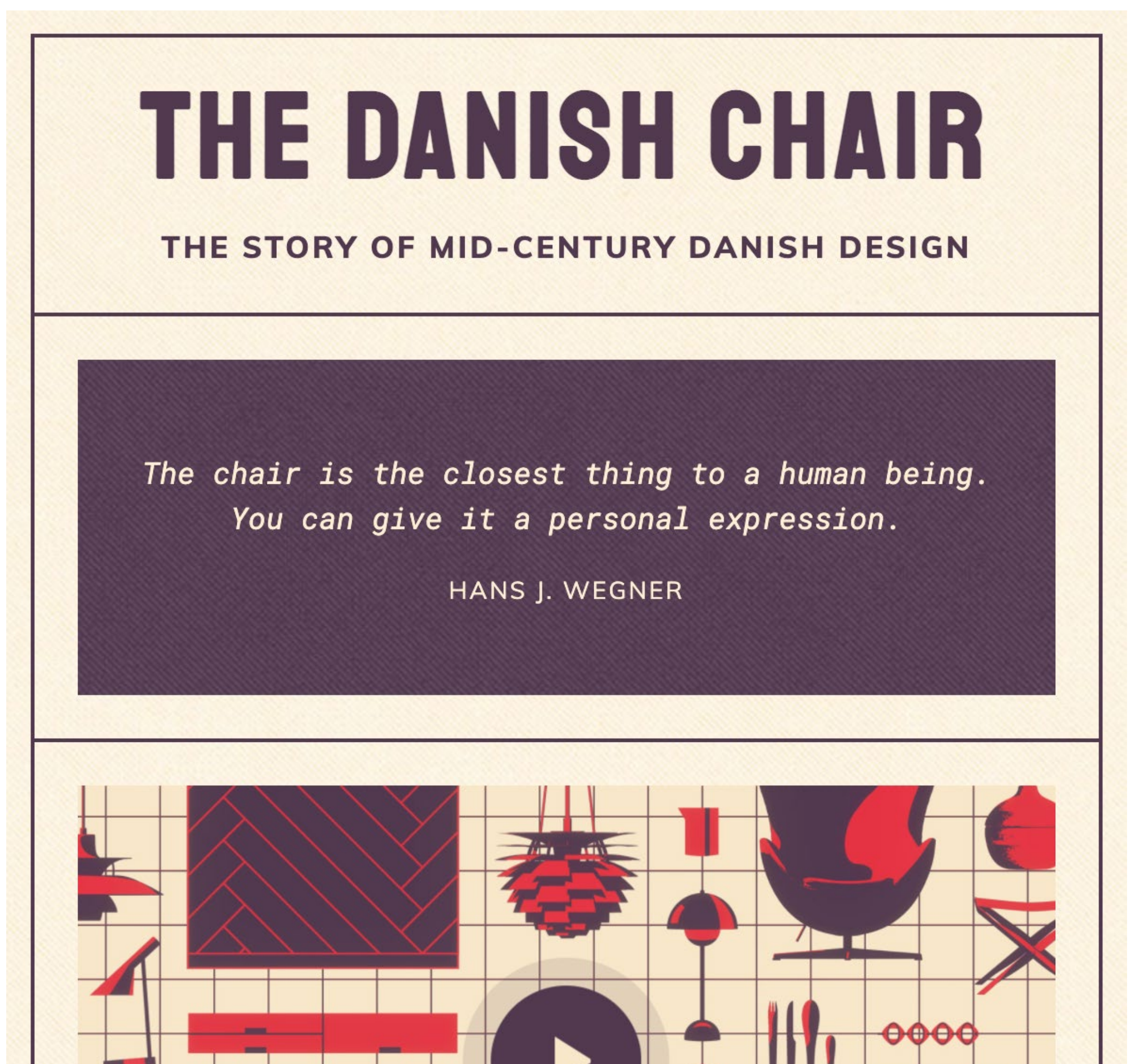
Design.insiders
design. products. art.



For devotees of mid-century modern, and those who have a healthy obsession with designer chairs, this is the site for you.

Directed, designed and animated by UK-based motion designer **Marius Vaitkevicius** the site and animations provide a potted history of mid-century Danish domestic design.

Tap the image to connect to the site.





Above: Nici Cumpston, Great-grandmother Barka 2020, Adelaide, Kaurna Country, pigment inkjet print, 80 x 80 cm.
Courtesy of the artist and Michael Reid Gallery



Tree Story: 6 February – 10 April 2021

Tree Story brings together creative practices from around the world to create a ‘forest’ of ideas relating to critical environmental and sustainability issues. At its foundation—or roots—are Indigenous ways of knowing and a recognition of trees as our ancestors and family. An exhibition, publication and podcast series, Tree Story takes inspiration from the underground networks, information sharing and mutual support understood to exist within tree communities, and poses the question: what can we learn from trees and the importance of Country?

Tap the MUMA icon to discover more



‘Sing’ is a new immersive installation at Bayside Gallery by Design Lecturer Dr Debbie Symons

‘Sing’ comprises 100 handwoven pendant nests containing mini speakers playing pre-recorded tropical bird species songs. It evokes the delicate and intricate natural connections found in remaining ‘wild’ environments. Sing is supported by the Copyright Agency’s Cultural Fund and is an outcome of Debbie’s residency at the international Labverde residence in Manaus, State of Amazonia, Brazil.

Exhibition details:

13 March to 9 May 2021
Bayside Gallery,
Corner Wilson and
Carpenter St, Brighton

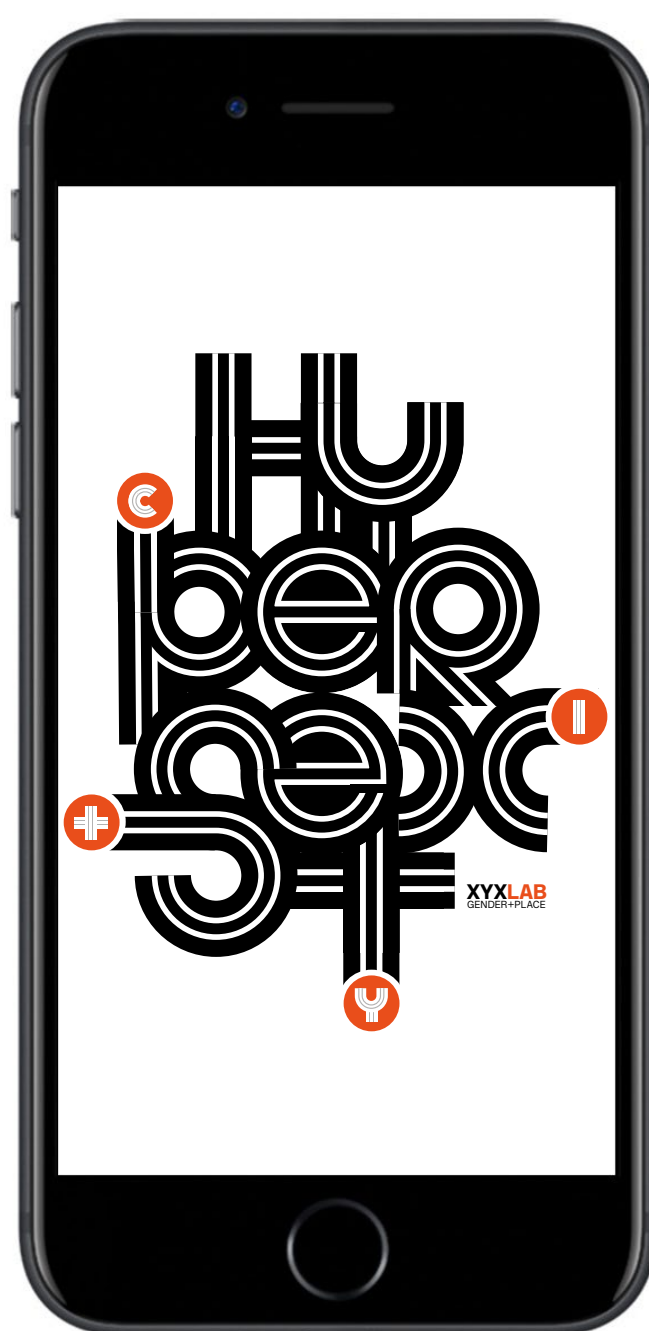




Above: HyperSext City HyperGraphic data walls, Tin Sheds Gallery, The University of Sydney



This week **XYX Lab** launched its latest exhibition at **Tin Sheds Gallery** at the **University of Sydney**. They also launched the interactive website that accompanies it. Tap the image, right, to connect to the site.



This new exhibition from Australia's own world-first research lab on space, gender and communication is designed to elicit the audiences unique experiences of the city and build understanding of excluded voices. Based on evidence-based research and lived experiences, this brand new work by Monash University's XYX Lab is making its debut at the University of Sydney's Tin Sheds Gallery from 4 March to 9 April. HyperSext City draws attention to the experiences of women, girls and the LGBTQI+ communities by representing data and intersectional narratives of gender that affect how urban spaces are accessed and occupied.

Exploring equity in public space, the exhibition invites the audience to contribute their own suggestions and solutions to overcome exclusion and lack of access. The exhibition employs data from all over the world and here in Sydney to spectacular effect. Works in the show include videos, workshops and a bespoke interactive website built for and launched at the exhibition — The HyperSext Repository interactively collates, documents and references data and research on gendered experiences of cities.

Exhibition dates: Thursday 4 March — Friday 9 April 2021
Tin Sheds Gallery, University of Sydney

Live, Drive, Ride like a local

Improving road sharing in the Alpine Shire through human stories with **Mobility Design Lab**.

This project discovered dozens of insights into road sharing in the Alpine Shire, examining the attitudes and values of locals and visitors using all types of vehicles.

Key outcomes from the research translated directly into the safety campaign. For example, hand gestures especially waving a greeting reinforce the community spirit of the Alpine Shire and are a great behaviour to encourage sharing the road.

Learn more at the campaign website by tapping on the image, right, and more about the project [here](#).



NGV

NGV Triennial Until April 18 (and it's free)

The NGV Triennial brings contemporary art, design and architecture into dialogue, offering a visually arresting and thought-provoking view of the world at this time. Featuring major new commissions and recent works that span geography, perspective and genre, the exhibition celebrates the work of some of the world's most accomplished artists and designers, while also giving voice to emerging practitioners.

Tap on the NGV icon above to connect to the website to book tickets and discover more including their online virtual content such as the Lara Schnitger installation seen below.



Top: Installation view of Adam Nathaniel Furman and [Sibling Architecture](#) (Melbourne) *Boudoir Babylon* 2020. Monash Architecture, and XYX Lab member, Timothy Moore, as a director of Sibling, played a major role in realising this project.

Centre left: *Natural History* 2020, by David Allen Burns and Austin Young of [Fallen Fruit](#) created an immersive installation artwork that utilises photographs of Australian flora and selected artworks from the NGV permanent collection to respond to history and the environment.

Centre right: *Plastocene - Marine Mutants from a disposable world* by Porky Hefer. Hefer's creatures remind us of plastic bags, straws, coffee cups, trash, and the discarded detritus of hyper-consumerism, convenience and environmental neglect. He speculates that in a distant future some species might transmutate, adapting to the endless abundance of plastics and pollutants flooded into nature.

Below: *House of heroines* by Lara Schnitger. Quilted sequined fabric panels will wrap around the walls of the gallery space in the manner of an ancient Grecian frieze, with Schnitger's drawings and text etched into the two-tone fabric. This work will extend the themes of feminist representation that underpin Schnitger's practice. The artist often uses materials traditionally associated with female labour to explore the boundaries of socially accepted femininity and the aspects of this regarded as obscene or taboo. Drawing on the representation of women in ancient architecture, this new work reflects contemporary expressions of women's voice, sexuality and agency.

Tap the image to visit the virtual tour.



MELBOURNE DESIGN WEEK

MORE
NGV

Melbourne Design Week returns to the NGV in 2021 with its largest program to date hosting 11-days of national and international designers in 300+ series of talks, tours, films, workshops, exhibitions and launches.

In 2021, designers—including many from Monash— come together at Melbourne Design Week to explore the theme: 'design the world you want' through the lenses of care, community and climate. Participants will explore how the design community can work together to create a better, healthier future for the planet and its inhabitants.

Join us and the rest of Australia's design community from the 26 March to 5 April across Melbourne and Victoria's ateliers, showrooms, galleries, gardens, waterways and rooftops or online with its expanded digital presence with exhibition tours, talks and reportage. **Tap the image above for more information.**

Monash Design at Melbourne Design Week **reFrame: the evolving practice of design**

The urgent, complex social challenges we face call for design to do more than increase profit margins and solve problems. Design must draw on its transformative potential to imagine anew the places where we live, work, learn and play. Over four days the design research labs of Monash University will reframe how we think about futures; mobility, climate, education and healthcare and reframe how we act creatively; through Indigenous knowing, co-designing and augmented realities. Through a series of workshops and discussions researchers, practitioners and the public will together explore ways we can productively amplify the social impact of design.

Look for us on the Design Week website and book through [eventbrite](#)

Mon. 29 March

12:00—2:00: Interaction Design

"How does good food, I mean, really good food, make you feel? There is a universal, sensational experience that turns flavour into laughter, spices into smiles. From the tingling feeling at the tip of the tongue, to the slow-cooked broth that coats the mouth, the joy of food can always be found. During the two weeks leading up to Melbourne Design Week, we invited students and staff on campus to spotlight their most memorable delicious moments. We not only wanted to elevate and celebrate the human emotion through culinary memories, but also to uncover the undiscovered secret eats of Melbourne food experience.

5:30—7:30: Book Launch / Panel Discussion

Join with Monash University Department of Design to celebrate the recent publications of its staff. Across the multiple—and porous—fields of design they have produced a range of publications that help reframe design scholarship to locate new engagements with cities, gender, transport, histories and futures. Gene Bawden, Author of "Comfort and Judgement", will be in conversation with architect, Charity Edwards to decipher the permanency of design's impact dating from Australia's fraught colonial projects.

Tues. 30 March

12:00—2:00: Melbourne's future mobility

The Mobility Design Lab hosts an interactive session considering what the future of Melbourne, or any city, might be like post-private car. We'll be looking positively at the opportunities such a future may present, as well as developing ways of meeting the challenges it presents.

This workshop and panel discussion poses a hypothetical situation asking participants to consider how mobility needs would be served without the private car. What does a city without carparks look like? What happens when we gain back some of the 30% of our city's surface area which is given over to private surface transport? Using a desktop prototype city, we will investigate these ideas to discover the possibilities.

PM: The Seven Grandfathers Teachings as an Indigenous design process

In this workshop the Seven Grandfathers Teachings, will be presented as an Indigenous design process participants can apply to and reflect on for their own projects. The Seven Grandfathers Teachings as a design process are iterative and non-linear, they have relationality between each other even though the holistic process can take designers from step one to step seven.

Wed. 31 March

12:00—2:00: Doctors and Designers: Re- Envisioning Healthcare

Delivering patient centred care is complex and challenging. In this session, designers and healthcare practitioners will reflect on the challenges and opportunities of engaging with co-design practice and design thinking techniques to re-envision new and innovative approaches to challenges in hospitals in Brisbane and Melbourne. Monash Design Health Collab and Queensland University of Technology Design Lab will lead this interactive discussion between designers, practitioners and the audience.

PM: Weaving Indigenous Perspectives in Design (Australia, NZ and Mexico)

If you think of design as a relational practice, how might Indigenous knowing shape how we are in relation to country, to time, to community, to materials? This panel discussion begins with a short overview of the designers' experiences engaging with Indigenous ways of knowing and being, weaving different perspectives from across design education, research and professional practice. This online panel discussion will explore how an Indigenous lens can productively reframe colonial or modernist perspectives on design research, education and professional practice.

Thurs. 1 April

12:00—2:00: CoDesign materials for climate action

This design workshop creates a space to sit with, make with, and understand our emotional responses to the climate emergency so that we can cultivate the agency required to face such complex challenges. Our current times of crises demand change from the processes, structures and systems around us. Yet, we may feel powerless to do it. This design workshop uses materials and metaphors to introduce the theory of emotional granularity, in order to support participants as they articulate, reflect and engage with their emotions surrounding the climate emergency.

PM: Making Space for Co- design and Architectural Affordances in the Design of Innovative Learning Environments

This discussion explores teacher agency, pedagogical beliefs and spatial literacy through the frame of co-design and architectural affordances and teacher practice. The architect, designer and school principal from a research project come together to reflect on how design workshops might support teachers through the transition into new learning environments. This panel is an online discussion of a design-led study that explores teacher agency, epistemic beliefs and spatial literacy.

**Iconic
Melbourne
Design** with
the Robin Boyd
Foundation and
Ian Wong

Join us at the Walsh Street headquarters of the Robin Boyd Foundation for a presentation of the I-Conic Melbourne Design series of films produced by Design's Ian Wong and the Robin Boyd Foundation. Each one hour session will feature the screening of two short films (see those listed right) commissioned by Design Tasmania. This will be followed by a panel discussion hosted by MADA's Ian Wong.

Film dates:

March 31: Mary Featherston
and Celina Clarke

April 7: Mary Featherston
and Phillip Zmood

April 14: Su San Cohn and
Phillip Slattery

MADA NOW

FINE ART DESIGN ARCHITECTURE DEAN'S MESSAGE



MADA NOW is the annual student exhibition and for the first time in 2020 it was celebrated entirely online. This also means that the exhibition exists way past its usual 2 week span, meaning we can revisit the show multiple time this year.

If you want to see what your peers achieved last year then visit the site by tapping on the MADA NOW image above.

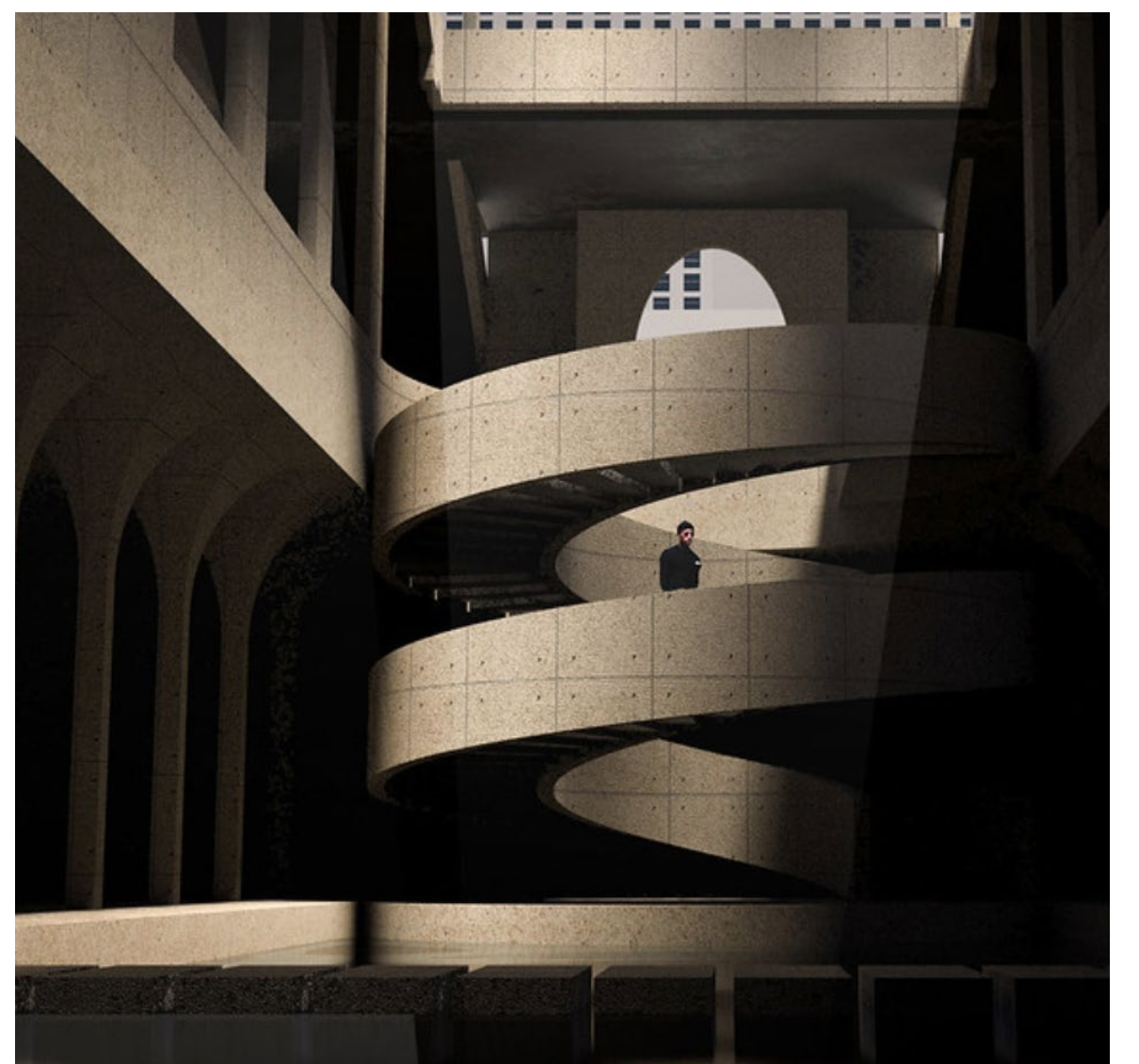
Above left:
Douglas Maxted
(Fine Art)
Untitled. acrylic paint and photocopy on fabric.

Above right:
Pengcheng Yang
(Architecture)
Vertical burials

Centre:
Jessie Liu
(Communication Design)
The Manifesto Workshop

Below left:
Ben Fraser
(Industrial Design)
The Filtr mask

Below right:
Yudi Tan
(Master of Design)
Beijing Opera Face Mask





MOTION

Motion graphics continue to play a key role in our communication environment. Whether they help us understand complex data or entice us to experience drama and theatre, motion graphics are an important part of a communication designer's repertoire. Tap the image above to watch Tao He's (Master of Design) extraordinary '20,000 Leagues Under the Sea' title sequence.

MUSIC

BLAKTIVISM

3 April Myer Music Bowl

"In 2020, the Black Lives Matter movement leapt out of the United States and proliferated around the globe; Australia was no exception, but our movement has its own unique history and identity. **BLAKTIVISM** brings together living legends and rising voices of First Nations musical activism in this corner of the globe. At the heart of **BLAKTIVISM** is a collaborative set featuring musicians that have redefined the voice of activism music across decades and to the present day, performing together as the galvanised chorus of an unstoppable movement."

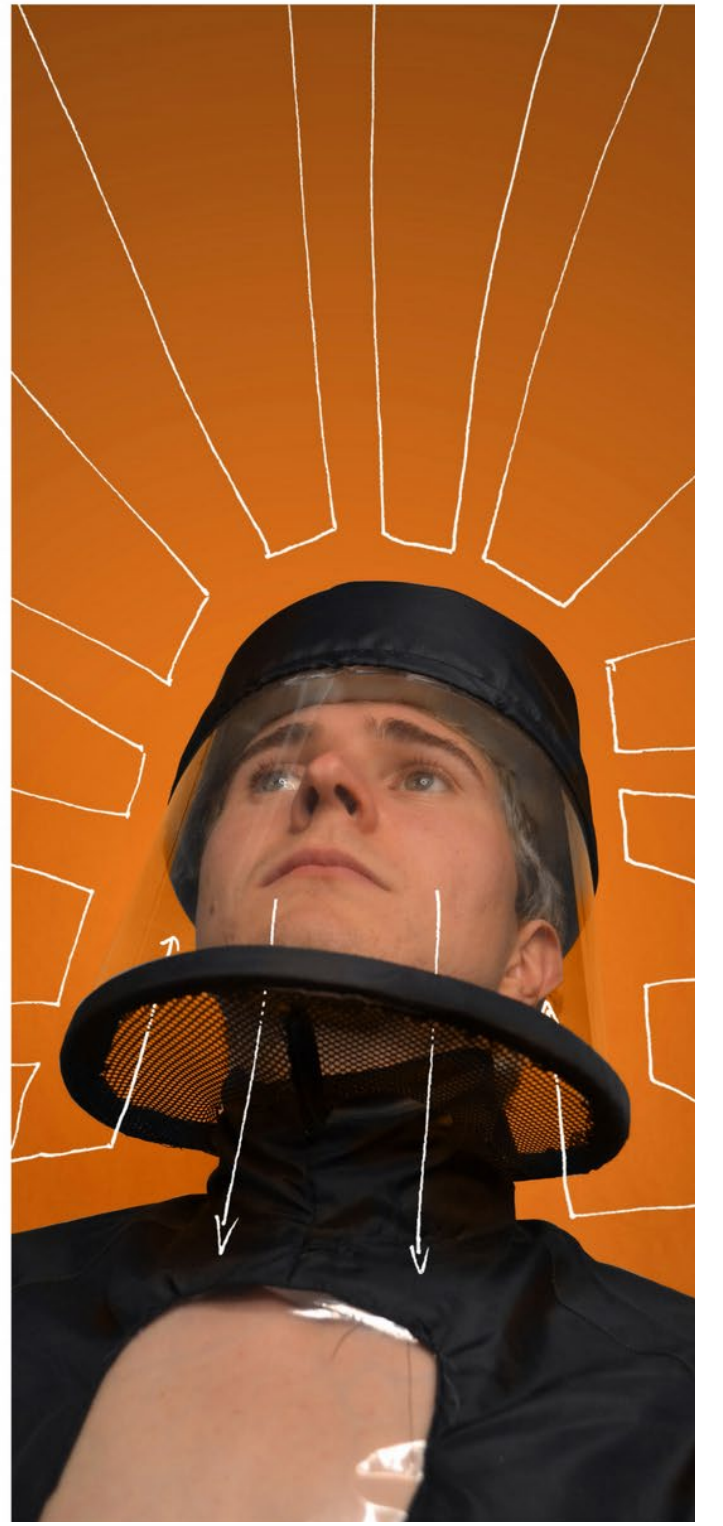
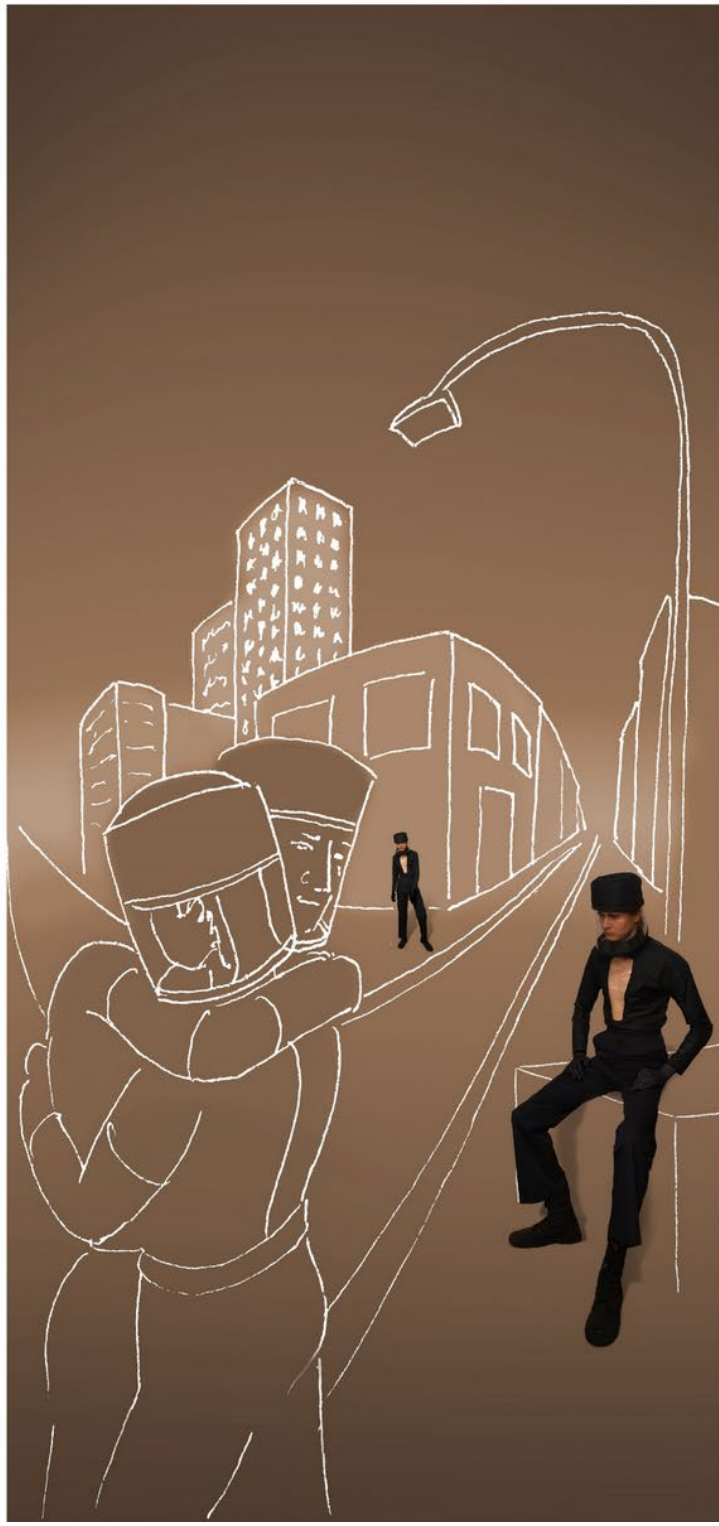
Tap the image for more information





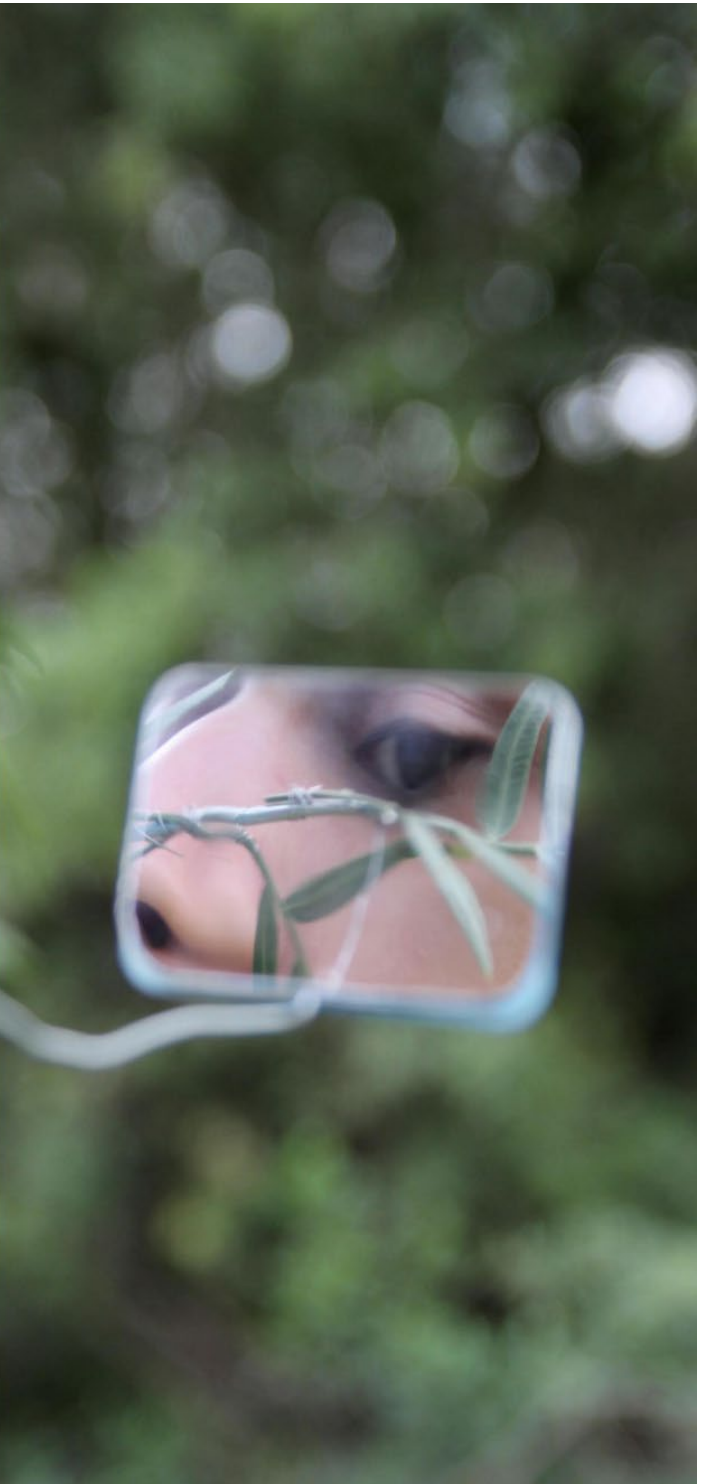
STUDIO

Collaborative Design (COL1001) helps students to apply design thinking and processes from across the spectrum of design disciplines. Most importantly the unit reinforces the essential need to apply design methodologies and processes in ethical and culturally sensitive ways.



Collaborative Design, Semester 2, 2020, People and Climate Studio Triptych project.

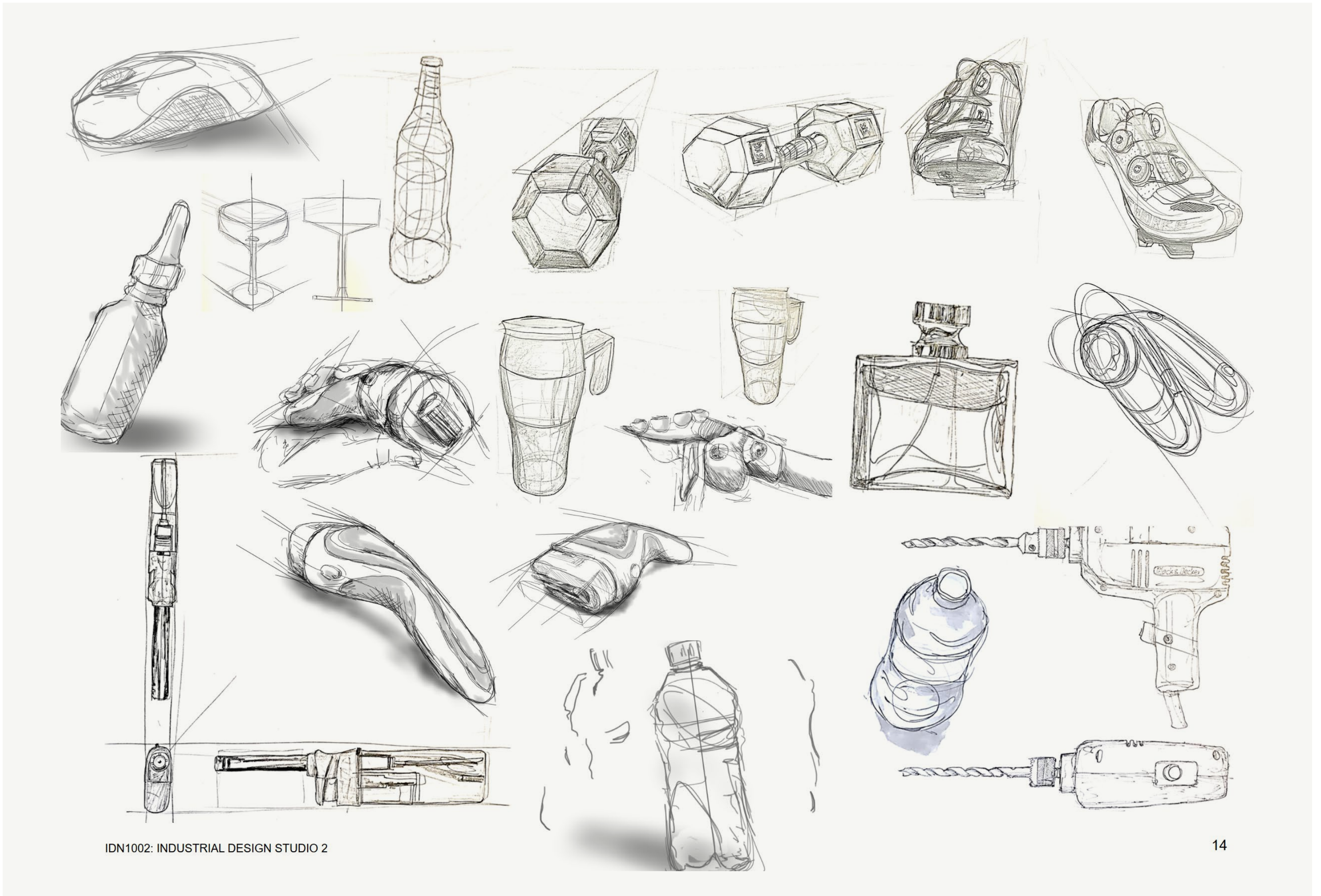
Follow the unit on instagram: #col1001
Above: Sowah Sayed
Middle: Niklas Otting
Below: Jhaeven-Leigh Nancy Strafonda



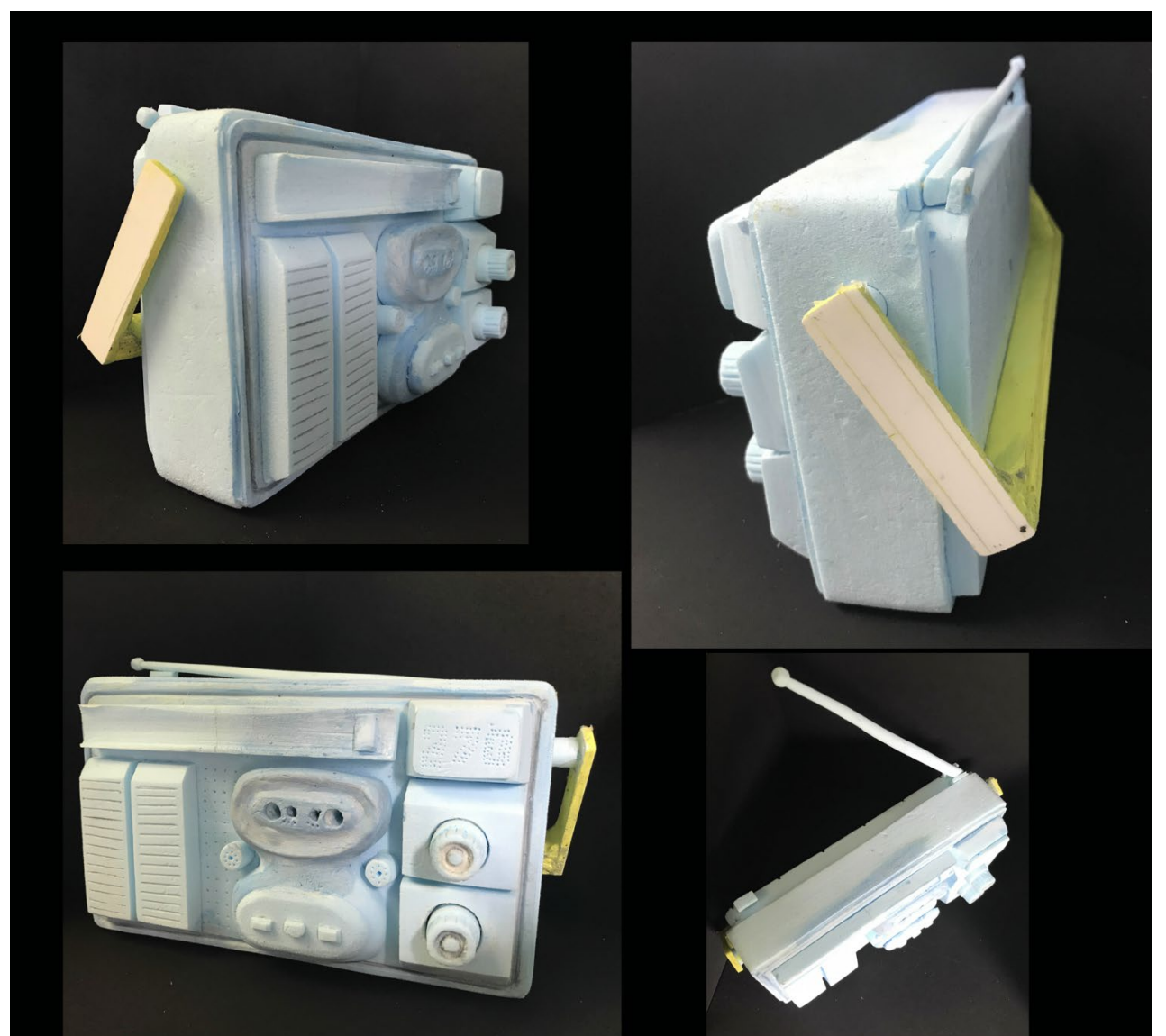
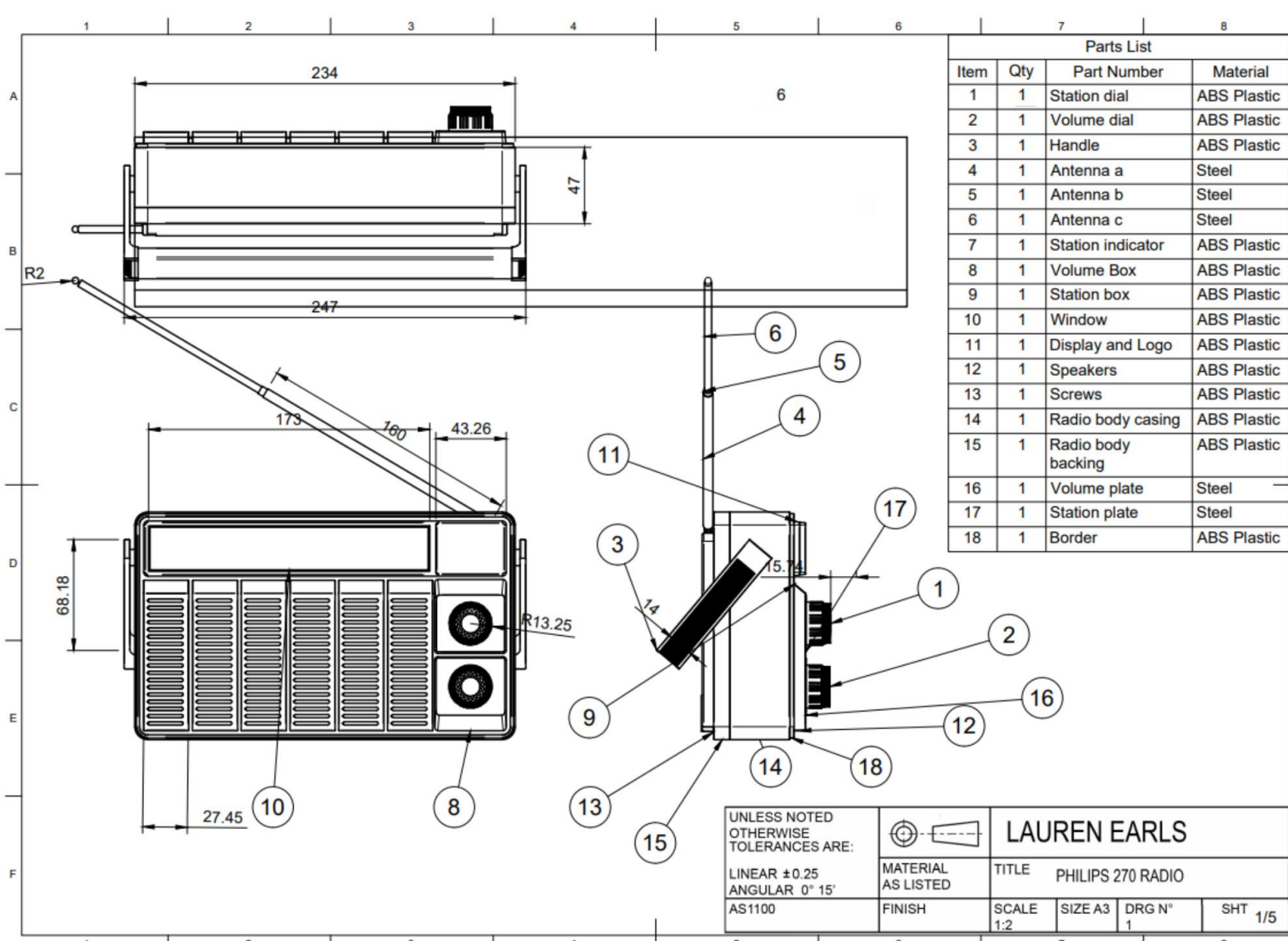
STUDIO

Industrial Design Studio 2 (IDN1002)

is the first unit to begin the sequence of ID studios at Monash. It is divided into 4 modules: studio, CAD, drawing and making. Here we see a fraction of the work completed by Lauren Earls, whose work demonstrates the breadth of research, making and thinking that must go into each design.



IDN1002: INDUSTRIAL DESIGN STUDIO 2





Pandemic Graphic Archive

Designer Charlotte Walker has established an archive of the world's Covid-19 graphics: the good, the bad and especially the ugly.

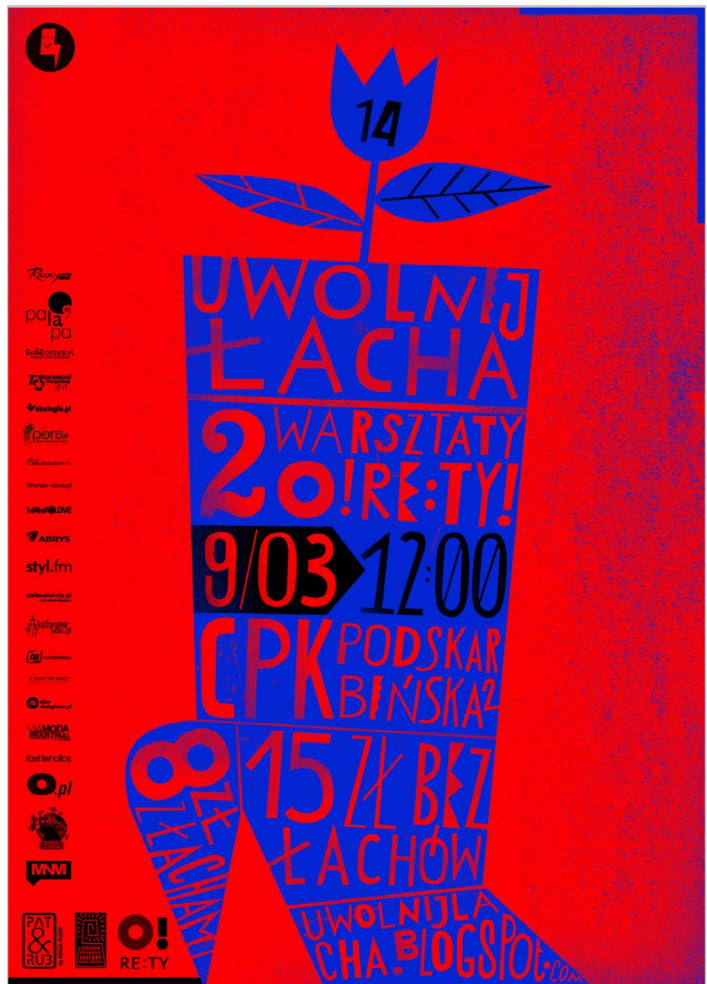
The archive is an ongoing project that is inviting a global audience to submit and archive covid_19 signage. If you would like to get involved in this ongoing project and submit images to the archive, please send attached images with your initials and approximate location of the signs to:

Ello@challot.co.uk

[Tap here to connect to the complete archive](#)



INSPO TYPE



Need some typographic inspiration?

Head to 'typo/graphic posters' and search through an endless archive of phenomenal works from around the world.

Top: acapulco studio

Above: Studio Mut

Right: studio philippe apeloig

Un opéra américain de Kurt Weill

Livret
Elmer Rice

Lyrics
Langston Hughes & Elmer Rice

En anglais, surtitré

Direction musicale
Tim Murray

Mise en scène
John Fulljames

Orchestre
Pasdeloup

Chœur
du Châtelet

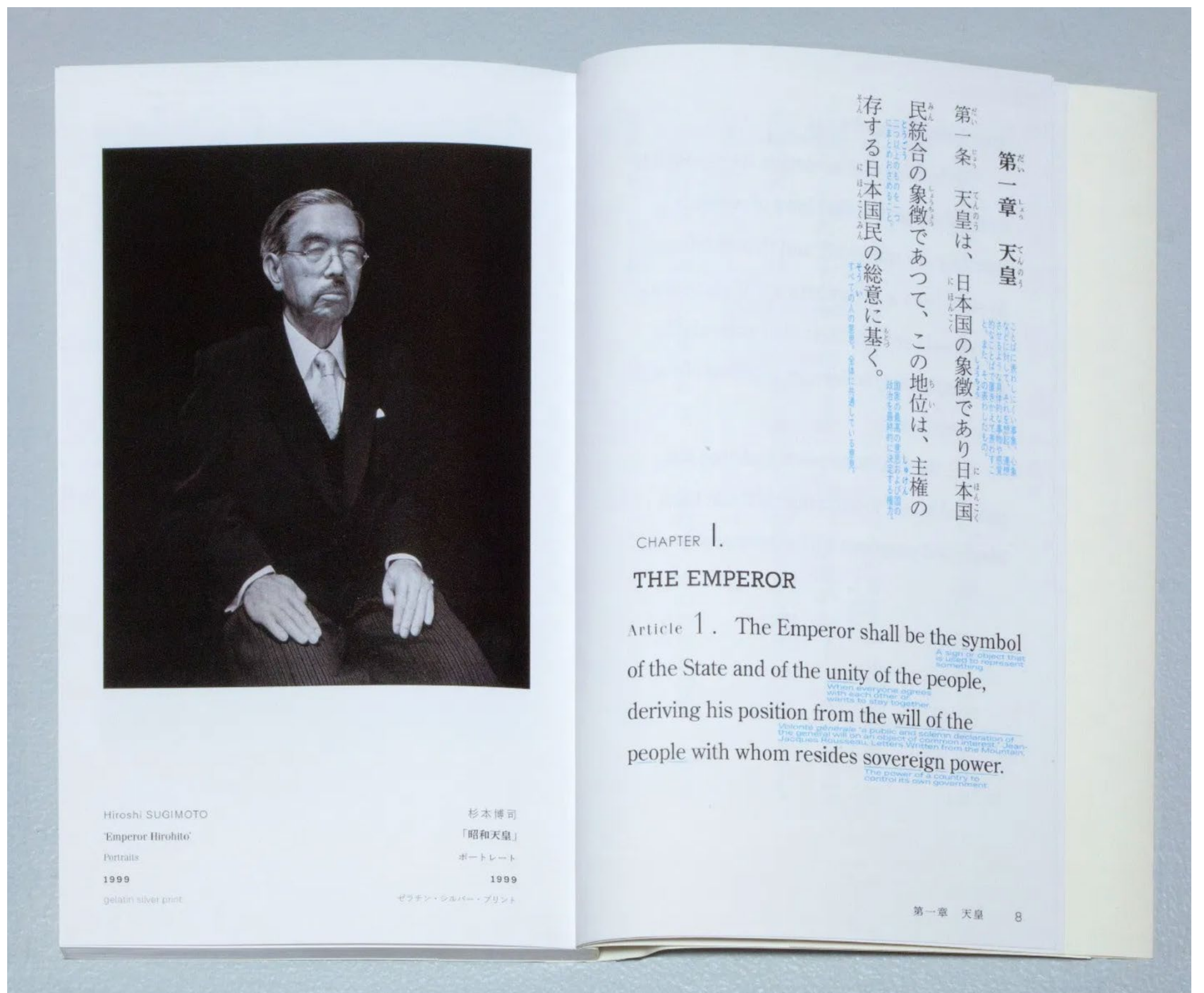
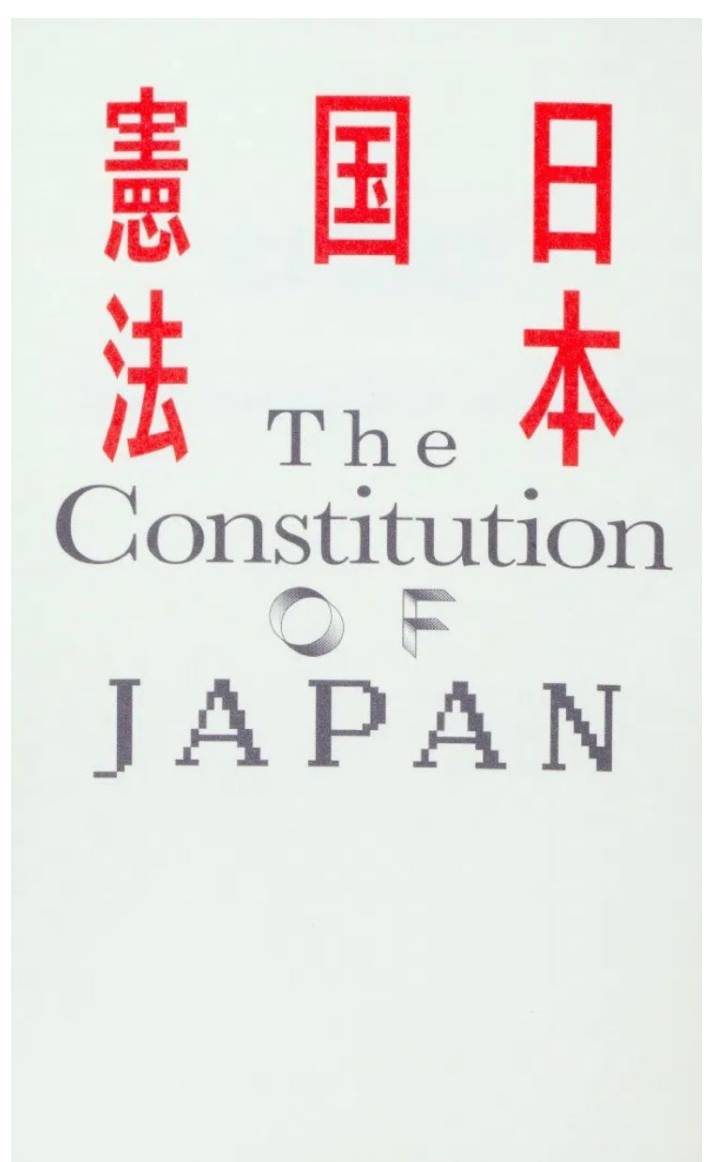
25 – 31 janvier
2013

chatelet-theatre.com
01 40 28 28 40

Co-Production The Opera Group / Young Vic Theatre, coproduit originellement avec le Watford Palace Theatre. Présenté en accord avec The European American Music Corporation, agent pour The Kurt Weill Foundation for Music, Inc., The Rice Estate and The Hughes Estate

châ
THÉÂTRE
-te-
MUSICAL
let
DE PARIS

TOKYO TYPE



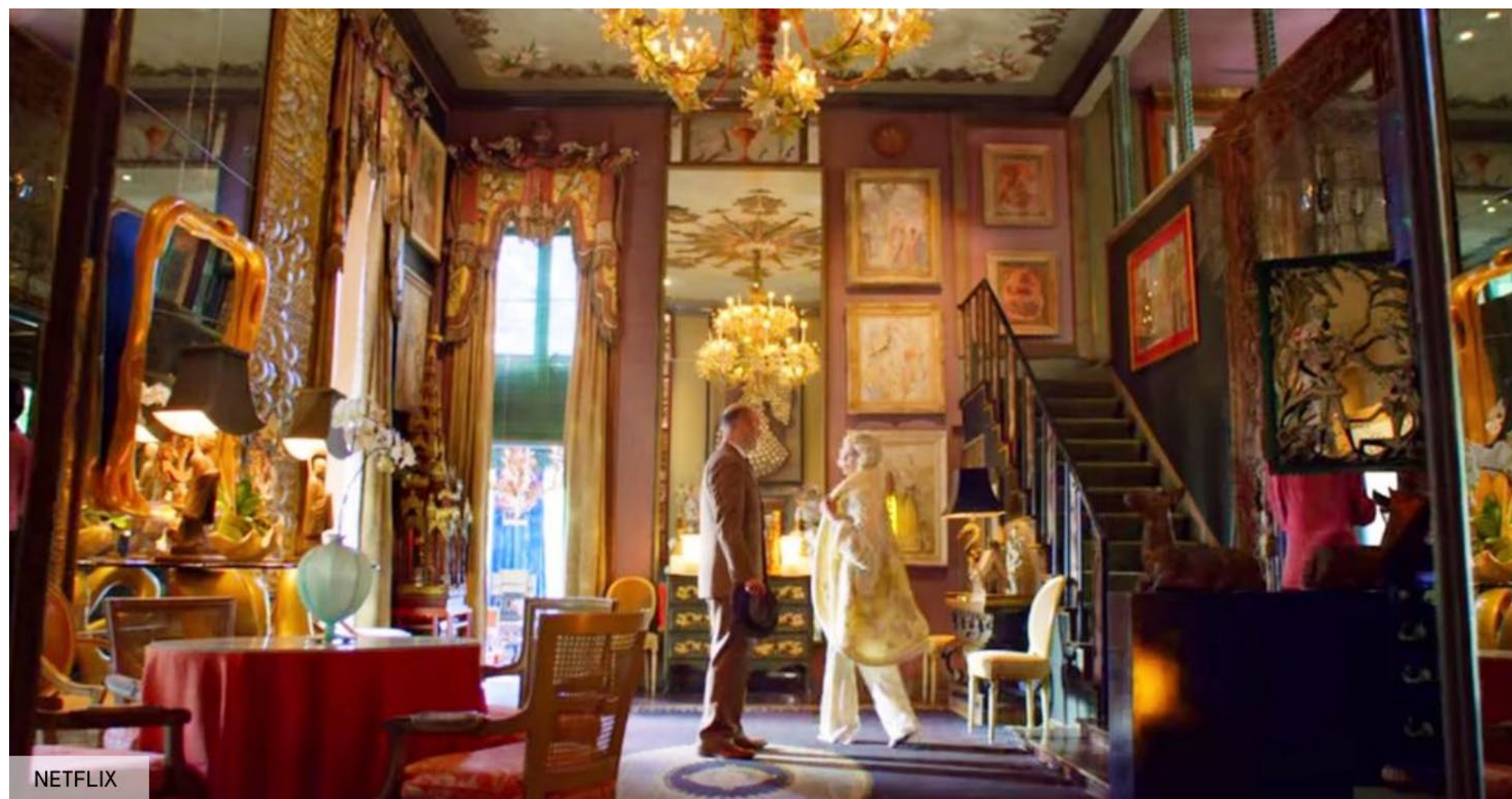
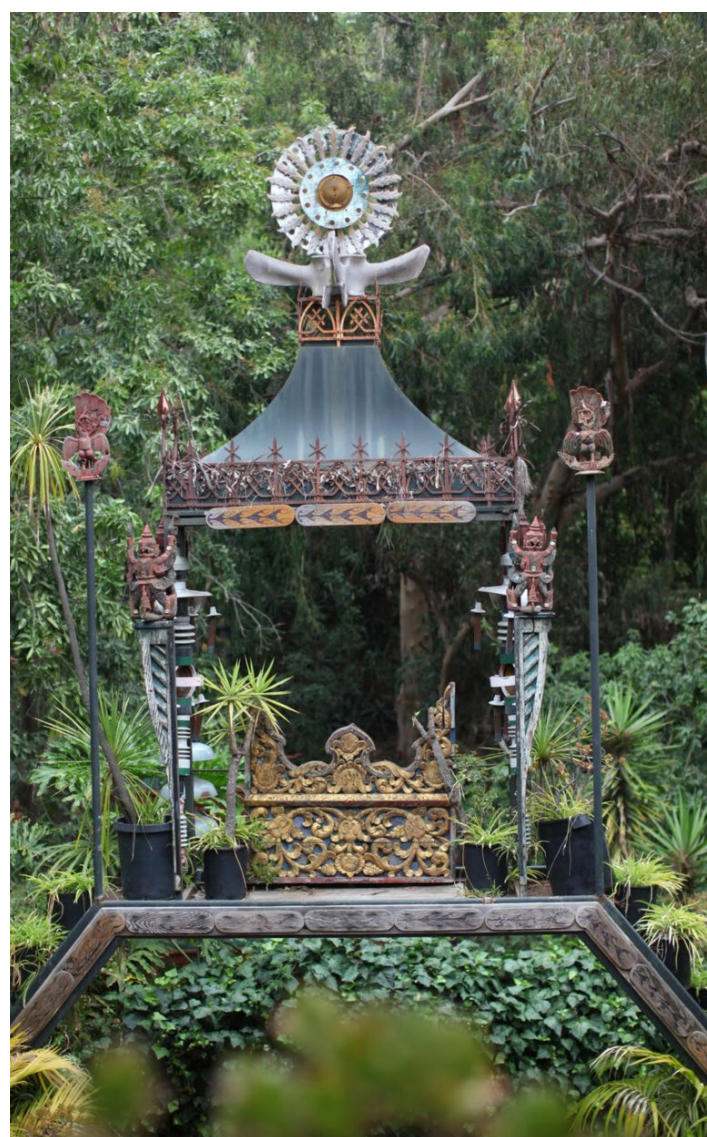
The Tokyo Type Directors Club Awards are among the most prestigious Typography awards in the world. Tap the Tokyo Type icon to connect to the recently announced 2020 award winners, including the Grand Prize by Gento Matsumoto (above).

INSPO SPACE

For those of you who ogled in awe at the home of Sharon Stone's character Lenore Osgood in the Netflix thriller 'Ratched', and wondered if it was real or a set... well its real, very real. The house is "Dawnridge", built in 1949 in Los Angeles for legendary Hollywood designer Tony Duquette and his wife Elizabeth.

Dawnridge is not open to the public, but it is occasionally used for photo shoots (like Tom Hiddleston's Gucci ad campaign), as well as film, television, and music video shoots (Florence + The Machine's "**Hunger**" music video was shot at Dawnridge).

To see more images of Dawnridge tap the inspo icon above, and to read more about the other incredible spaces used in the filming of 'Ratched' check out the story in [Architectural Digest](#) from September 2020.



MADA CARES

The [RE]solution Challenge invites all MADA students to share their favourite environmental sustainability hacks. MADA is a materials-based faculty. We make things. But how can we ensure that things we make are more sustainable and minimise our impact on the world's finite resources? Small steps taken collectively add up to big changes. So, we want you to share your small steps, your micro-hacks, the little choices you make, to make a difference.

Why do we care about being more sustainable?

Chaoqiong Ren, says that they care because, "In today's society, the behaviour of wasting resources is everywhere. I am very worried about our future lives. So, I really want to change my life and the lives of my family and friends. If everyone can change a little, I think the earth will make great progress."

Zenet Juninho, shares that view, stating, "...we are part of this earth so earth's needs are also our needs. There's no need to jump in and try to change the whole world right away; I want to show people to start little. Start by being aware and conscious. Start small. Hence my hack is to reuse items that normally I'd trash without second thought."

What about you - do you share their concerns?

The [RE]solution Challenge will be (re)launched in at the end of Semester 1 2021 and we will invite you to post your hacks on Instagram over a 4-week period. Those who register for the Challenge will receive an email each Monday morning, for 4 weeks, giving them a challenge to respond to each week.

To register for the Challenge, please complete this form by tapping here.



Top: Chaoqiong Ren: 'Change our behaviours' **Below:** Zenet Juninho: 'Make art from waste'



For those of you who are new to Monash Art Design and Architecture and need some extra help orientating yourself to our creative community, the degree and services, then don't forget to take a look at the 2021 Orientation Issue of 'Squirrel'. **Just tap on the '21' to be redirected.**






If, throughout your time with us, you need to reach out for assistance Monash has put in place systems to make that process easier for you.

You can now seek academic skills support through the Student Academic Success Team— you can book a slot directly via [calendly](#) or find further information [here](#).

Tap on the 'Student Resource Guide' to access the entire PDF, and be sure to reach out when you need to.

FACULTY OF ART, DESIGN AND ARCHITECTURE STUDENT RESOURCE GUIDE

Early intervention is key to achieving the best outcomes - this guide outlines key resources to assist you in navigating yourself through challenging situations.

	ACADEMIC		SOCIAL/ EMOTIONAL		CONCERNING BEHAVIOUR
Students have access to a wide range of support within the Faculty, Monash Library, Learning Skills and more. You may feel overwhelmed and unable to reach out as deadlines loom. Reach out to options for support early and often.	<p>Research & Learning Online: resources to support skills and strategies for study and research.</p> <p>Drop -In Sessions: students can get expert advice from a learning skills adviser or librarian.</p> <p>Academic Integrity: this tutorial covers information to ensure students are aware of academic responsibilities such as citing and referencing.</p> <p>English Connect: resources to develop academic writing, reading, presentation skills and more for those students who are from a Non English-Speaking Background</p>	University students are a 'high risk' population for mental health difficulties given that the prevalence of mental disorders is highest in the 16-24 year old age group. (APS, 2014; Stallman, 2010)	<p>Counselling Services (ph: 9905 3020) provides FREE 24/7 support to all students struggling to cope with personal or study.</p> <p>Course Advice: Find time to speak with a Monash Connect staff member if you have questions relating to your course or unit enrolment. Call to have your query sorted on +61-3-9902 6011</p> <p>Anita Blom: Manager, Student Experience + Inclusion</p> <p>Book a time to meet with Anita +61- 419 665 676 (M – F) G2.17</p> <p>Queries about international student visa requirements can be referred to Monash Connect's International Student Support team.</p>	All staff and students have the right to feel safe at Monash. If you see or experience behaviour of concern, take a moment to consider the most appropriate course of action – do not attempt to 'work things out' if there is an issue of safety – take action immediately. This section will supply you with tools and information to seek expert support as appropriate.	<p>The Safer Community Unit (ph 99051599) is focused on identifying and reducing risks to the safety and wellbeing of our students, staff and wider community at Monash. They provide advice and support as well as key information to help you in difficult or risky situations. If you're feeling threatened or unsafe, please contact the Safer Community Unit. Students can make an anonymous report online if they have witnessed or experienced threatening behaviour.</p> <p>Emergency Contacts On Campus: 9905 3333 (Security 24 hours) Off Campus: 000 (police, fire or ambulance)</p> <p>Security escort: 9902 7777 (24 hours)</p> <p>Sexual Assault Students can seek support for themselves or for someone that they know who may have experienced sexual assault. The sexual assault reporting booklet will guide students through reporting options and provide information and support</p>
MonTrack: advice and information on the services, facilities and opportunities at Monash so that you can make the most of your time at uni.	Can't submit on time? Apply for Special Consideration - for students impacted by poor health or extreme circumstances.				