

BACHELOR OF MEDICAL SCIENCE AND DOCTOR OF MEDICINE (MD)

ADMISSIONS INFORMATION FOR
INTERNATIONAL APPLICANTS
2027



MEDICINE AT MONASH

RANKED
#47
FOR MEDICINE

QS World University Ranking by Subject (2025)

If you aspire to be a doctor, Monash provides you with the opportunity to reach those goals.

- Begin your medical studies from day one of your degree
- Graduate with a Doctor of Medicine

The Monash School of Medicine is internationally recognised for providing world-class education, with a comprehensive and interdisciplinary approach to medical training.

Our medical program has been designed in close consultation with doctors, health care professionals, and leaders in the health and research sectors to give you the scientific background and clinical expertise to ensure you are prepared for your future as a doctor.

TAKE YOUR MEDICAL DEGREE TO THE NEXT LEVEL

If you're looking to further challenge your learning experience, the Bachelor of Medical Science (Honours) allows you to work on a research topic with Australian and internationally recognised researchers.

This 12-month program, offered to our MD students and graduates, can be essential to developing a commitment to be at the forefront of medical research. During this time, you will be immersed in a setting that will introduce you to research practice, where you'll learn skills related to data analysis and the communication of scientific ideas.

Learn more at monash.edu/medicine/bmedsc-hons

INTERNATIONAL STUDENTS

The program is offered to international applicants on a full fee paying basis.¹

Additionally, other expenses students would expect to incur include accommodation, transport and living expenses, plus textbooks and stationery.

CAN I PRACTISE IN MY HOME COUNTRY?

Many students return to their home countries at the conclusion of their programs to undertake local internships and fulfil licensure requirements. It is recommended that applicants check the requirements in their country to ensure professional accreditation circumstances are considered.

INTERNSHIP

Any offer of a place in a Monash University medical course is made on the understanding that Monash in no way guarantees any period of internship in an Australian hospital at the completion of their medical degree. Internship places are not allocated by Monash University.







1. Please note: If your residency status changes once you have commenced the course, you will be converted to a full-fee paying domestic place.

For more information see: studyassist.gov.au/help-loans/fee-help



OUR MD PROGRAM

Our main focus is on improving outcomes for patients by making sure that medical students are strongly connected with our academic experts and clinicians.

 <p>VARIETY OF LEARNING STYLES</p> <p>Our innovative teaching sessions provide you with a range of learning modes. Lectures, seminars, workshops, tutorials and simulation sessions are designed to suit the content being covered. These sessions are delivered by content experts within the university as well as clinicians and researchers.</p>	 <p>EARLY CLINICAL – HOSPITAL OR GP OBSERVATION</p> <p>You'll have the opportunity to interact with health care professionals through a variety of medical contact visits to hospitals or community clinics. This aspect of the course allows you to experience an introduction to medical interviewing with real patients, taking a family history, as well as exploring the ethical aspects of clinical work.</p>
 <p>INTEGRATED CASE LEARNING AND CLINICAL SKILLS PRACTICE</p> <p>Integrated Case Learning (ICL) sessions are small group tutorials that are structured around a clinical scenario.</p> <p>In the early years, your ICL tutorials in groups of 12–15 students will incorporate curriculum content from biomedical sciences, sociology of science, clinical skills and professional requirements of clinical practice (e.g., ethics and law).</p>	 <p>CLINICAL SKILLS</p> <p>Clinical skills sessions are active, hands on learning led by clinicians. It's about developing fundamental skills for taking a patient history, and covers basic examination techniques and simple procedural skills. In years 3B, 4C and 5D, we provide opportunities for you to develop and enhance these skills during clinical placement, by engaging with real patients during bedside tutorials and clinical settings, under the guidance of medical practitioners. Clinical placements may be in metropolitan or rural areas, where travel may be required. Acceptance of the offer of a place in the Monash medical course indicates acceptance of the subsequent clinical placement allocation.</p>
 <p>RESEARCH COMPONENT</p> <p>Basic research skills are introduced in the early years and further developed in Year 3B. In the final year of the course you'll undertake a scholarly intensive placement under the supervision of a researcher or clinician. You'll have the opportunity to explore an aspect of research or professional practice using the research skills you develop earlier in the course.</p>	 <p>SIMULATION – PATIENT SAFETY</p> <p>The Patient Safety program is delivered in final year and is designed to equip you with the knowledge, skills and attitudes necessary to be a safe practitioner. Simulations and clinical skills workshops are designed to provide practical hands on simulation experiences of authentic scenarios from clinical practice. This program is invaluable in preparing you for your role as an intern.</p>
 <p>PROFESSIONAL DEVELOPMENT</p> <p>Professional behaviour, and its importance in health service delivery, is nurtured along with the development of other high level skills. You'll be expected to be aware of and demonstrate the professional values and qualities of doctors such as: respect for others, confidentiality, trustworthiness and dependability.</p>	 <p>FINAL YEAR TRAINING – CLINICAL</p> <p>The final year of the course is based upon a trainee internship model. Your clinical placements during the year include acute care, medicine, surgery, and chronic care. There is also a placement in a medical specialty of which you can select from an extensive range of options.</p>

TIMELINE TO BECOME A DOCTOR IN AUSTRALIA



For more detailed information see pmcv.com.au

PROVISIONAL REGISTRATION

Upon completion of your degree you will receive provisional registration with the Australian Health Practitioner Regulation Agency and the Medical Board of Australia. After the completion of a compulsory internship in an approved hospital, graduates become eligible for full registration.

WHY MONASH?

You'll undertake clinical experience in some of the country's most highly regarded centres of medical care and expertise.

In the MD, you'll be learning from staff across Medicine, Nursing and Health Sciences who are leaders in their field. You'll also benefit from our links with the largest health care provider network in Australia, which includes the Monash Medical Centre and The Alfred Hospital (Melbourne's major casualty hospital), Eastern Health, and health services in rural and regional Victoria and outer metropolitan Melbourne. Our course has a very strong focus on patient safety, evidence-based practice, clinical role modelling, and professionalism.

1961

MONASH MEDICAL SCHOOL FOUNDED

Over the years the Faculty has grown and we are now at the forefront of research and education in the medical field.

MONASH CLINICAL PARTNERS

ALFRED HEALTH offers a range of specialist medical and surgical services across three sites in Victoria. The Alfred Hospital is Victoria's top trauma centre and largest intensive care unit.

MONASH HEALTH is Victoria's largest public health service, providing healthcare to one quarter of Melbourne's population. Hospitals include Monash Medical Centre Clayton, Dandenong Hospital, Casey Hospital and the new Monash Children's Hospital, one of only two paediatric hospitals in Victoria.

BENDIGO HEALTH services the Loddon Mallee region, an area nearly the quarter of the size of Victoria. The new Bendigo Hospital opened in late 2017, incorporating the latest design and technology solutions, in a tranquil and caring environment.

PENINSULA HEALTH is a major health care provider serving the metropolitan and regional areas on Victoria's Mornington Peninsula. Frankston and Rosebud Hospitals are teaching hospitals with over 900 beds, providing a wide range of services from obstetrics to aged care, rehabilitation, emergency and intensive care, oncology, psychiatric services and Hospital in the Home (HITH). Frankston Hospital will soon house a new \$15 million teaching and research hub, with state-of-the-art facilities to train the next generation of doctors.

CLINICAL PLACEMENTS

You'll undertake clinical placements in years three, four and five in metropolitan and rural clinical schools and their related sites.

YEAR THREE



Medicine



Surgery

YEAR FOUR



Children's Health



General Practice



Aged Care



Emergency/ Acute care



Psychiatry



Obstetrics, Gynaecology



Patient Safety



Medicine



Surgery



Scholarly Intensive Placement (SIP)



Metropolitan Melbourne



Rural Victoria

Eastern Health Clinical School

School of Translational Medicine

School of Clinical Sciences at Monash Health

Monash Rural Health

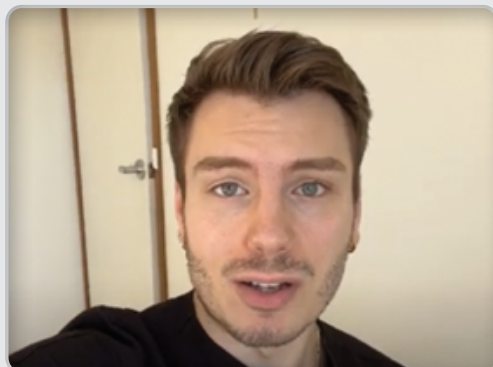
INTEGRATING RESEARCH AND CARE FOR BETTER OUTCOMES

Australia's first specialist heart hospital, located on Monash University's Clayton campus. The Victorian Heart Hospital represents a new era of integrated heart research and clinical expertise in Australia, enabling patients to access world-leading cardiac care under one roof, supported by groundbreaking research led by the Monash Victorian Heart Institute.



WATCH A DAY IN MY LIFE: MEDICINE IN LEONGATHA WITH BEN

What is it like to study medicine at Monash University and complete a rural placement in Leongatha, Gippsland? Follow fourth-year student Ben on his general practice rotation in South Gippsland. Explore placement at a local GP clinic, tour Ben's accommodation and check out some of his favourite places to eat and study.



Learn more

ONE PROGRAM TWO ENTRY POINTS

We offer approximately 90 places in our direct entry program for international students and approximately 30 places in our graduate entry program, giving international students more opportunities to study at one of Australia's most respected and prestigious medical schools.

DIRECT ENTRY REQUIREMENTS (5 years)

90
PLACES
Approximately

YEAR 12 OR EQUIVALENT 33.3%

The direct entry program is only available to current Grade 12 (or equivalent) or applicants who have completed Grade 12 no more than two years prior and have not commenced any form of other tertiary studies during that time.¹

Overseas-based applicants

All overseas-based applicants must submit certified copies of their FINAL results to your agent, or, for direct applicants, directly to Monash. Offers will not be made on interim or predicted results.

Australian-based applicants

International students studying the Year 12 in Australia must apply through VTAC, visit: vtac.edu.au

1. Applicants who are required to complete National Military Service in their home country are exempt from the two-year rule and should apply during the final year of their service.

ISAT 33.3%

The Faculty of Medicine, Nursing and Health Sciences will determine those applicants who are to be offered an interview. Selection for interview will be based on overall performance in the ISAT but applicants must achieve an overall total score of 170 or above, with a minimum of 165 in both sections – Critical Reasoning and Quantitative Reasoning.

Students must nominate Monash University as a preference when they register for the ISAT. It is also essential that the email address that you register for the ISAT with matches the email address that you supply on application to Monash.

For further information visit: isat.acer.org

INTERVIEW 33.3%

At Monash, we use the Multiple Mini Interview (MMI). This allows us to better understand who you are and whether you demonstrate the personal qualities necessary to succeed in both this program and in the health care profession. You'll only be able to undertake the MMI once.



IMPORTANT NOTE

Applicants who have commenced tertiary study (Certificate IV and above) are ineligible for the direct entry program.

GRADUATE ENTRY REQUIREMENTS (4 years)

30
PLACES
Approximately

International students interested in Graduate Entry Medicine at Monash must have completed or be in the final year of completing a bachelor's degree from an internationally recognised university. The degree must consist of significant and broad biomedical science content (for example Pharmacology, Physiology, Immunology, Biochemistry, Microbiology or Genetics) to be eligible for consideration.

Applicants must achieve a minimum GPA of 6.0 out of 7.0. International applicants are NOT required to undertake the MCAT or GAMSAT to be considered for the Graduate Entry program at Monash.

ACADEMIC RECORD 40%

Completed or in the final year of completing a bachelor's degree with a significant and broad component of biomedical science content with a minimum Grade Point Average (GPA) of 6.0 out of 7.0.

INTERVIEW 60%

Applicants will be invited to attend an interview (MMI format) based on their academic results.



DIRECT AND GRADUATE ENTRY ENROLMENT REQUIREMENTS

Upon enrolment you will be asked to comply with the mandatory immunisation requirements in readiness for clinical or fieldwork placements. You will be required to obtain a Police Check annually and a Working with Children Check. It's highly recommended that you hold or attain, by the end of first semester of the course, a current registered Level 2. Provide First Aid or Senior First Aid Certificate. You'll receive further instructions about the requirements prior to or on course commencement. For further information visit: monash.edu/medicine/study/student-services/mandatory-compliance



Offers for a place in Medicine will only be made for non-VTAC applicants once they have provided official, certified, final academic transcripts. If you are completing your Year 12 equivalent studies at the end of the year and can only provide final, certified documentation in December or January, you should consider applying for the next intake as places for Medicine at Monash may be filled by the time we can fully assess your application for an offer.



MULTIPLE MINI INTERVIEW DATES

It's vital you are aware of the interview dates and make yourself available during these times. Only those who attend an interview will remain eligible for a place in the MD program. We don't run interviews outside of the allocated times.

WHAT IS A MULTIPLE MINI INTERVIEW (MMI)?

At Monash we use a four station Multiple Mini Interview (MMI). Each circuit comprises a series of scenarios and associated questions focusing on applicants' personal qualities. At each station, applicants are given two minutes of reading time followed by eight minutes to answer a series of questions relevant to the scenario. The MMI format allows the faculty to determine which applicants possess the personal qualities required to succeed in the MD program, as well as the qualities that we are looking for in health care professionals, including:



Collaboration and advocacy



Critical thinking



Motivation and resilience



Empathy and ethical reasoning



IMPORTANT DATES

International applicants completing an Australian Year 12 program who wish to be considered for Medicine at Monash in 2026 MUST apply through VTAC (vtac.edu.au) by the close of timely applications on 30 September 2026 (TBC). If you remove Medicine from your preferences after 30 September 2026 (TBC), you cannot reinstate it in your preferences and you will no longer be eligible to be considered.

ENTRY REQUIREMENTS FOR MEDICINE

YEAR 12 OR EQUIVALENT RESULTS REQUIRED FOR DIRECT ENTRY

Studies in Chemistry and English are prerequisite requirements for entry.

	CHEMISTRY	ENGLISH	YEAR 12 EQUIVALENT SCORE
VCE	≥30	≥30 any Year 12 English or ≥ 35 in EAL	97.50
MUFY	≥75%	English "A" and "B" ≥ 75%	Minimum score of 92%
GCE A LEVELS	D	<ul style="list-style-type: none"> B in O level English; OR B in AS level General Paper; OR D in A level General Paper. 	15#
SINGAPORE A LEVELS	D in Chemistry (H2); or, Merit in Chemistry (H3)	<ul style="list-style-type: none"> B in 'GCE O Level English'; OR B in 'Literature in English (H1 level)' or 'General Paper (H1 level)'; OR D in 'Knowledge and Inquiry (H2 Level)' or 'Literature in English (H2 Level)' or 'English Language and Linguistics (H2 Level)'; OR Merit in 'Literature in English (H3 Level)'. 	15*
IB – INTERNATIONAL BACCALAUREATE DIPLOMA PROGRAM	5 in Standard or 4 in Higher Level	<ul style="list-style-type: none"> At least 5 in one of the following SL subjects: English A: Literature, or English A: Language and Literature, or Literature and Performance, OR At least 4 in one of the following HL subjects: English A: Literature, or English A: Language and Literature, OR At least 6 in one of the following SL subjects: English AB, or English B, OR At least 5 in the following HL subject: English B. 	Minimum of 39
ALBERTA (High School Diploma)	60% or above in Grade 12 Chemistry	60% or above in English Language Arts 30-1, English Language Arts 30-2 (provincially examined)	90% Overall average of all Grade 12 subjects. Must achieve minimum of 100 credits.
BRITISH COLUMBIA (Certificate of Graduation)	Chemistry	60% or above in Grade 12 English (provincially examined)	90% Overall average of all Grade 12 subjects. Must achieve minimum of 80 credits.
ONTARIO (Secondary School Diploma)		60% or above in Grade 12 English	92.50% Average of best six Grade 12 results in academic subjects. Must achieve minimum of 30 credits.
NOVA SCOTIA (High School Graduation Diploma)	60% or above in Grade 12 Chemistry	70% or above in Grade 12 English	90% Average of best five Grade 12 results in academic subjects.

Applicants from Manitoba, Quebec, Newfoundland, and Labrador will be assessed on an individual basis. *Score calculated from either: Best 3 H2 subjects in one sitting (A=5, B=4, C=3, D=2, E=1). Maximum of 1 bonus point for any H3 Distinction; or, Best 2 H2 subjects within two years (A=5, B=4, C=3, D=2, E=1), plus best 2 H1 subjects (A=2.5, B=2, C=1.5, D=1, E=0.5). Maximum of 1 bonus point for any H3 Distinction. H1 Level subjects must not be in the same subject area as the H2 Level subjects included in the calculation. #Score calculated from best 3 A-Level subjects within 2 years (A*=5, A=5, B=4, C=3, D=2, E=1). Maximum of 1 bonus point for any A* grade.

ENTRY REQUIREMENTS FROM OTHER COUNTRIES¹

All India Senior School Certificate	90%
Indian School Certificate Examination	85%
Advanced Placement, America	10
SAT, America (Total score out of 1600)	1420
High School Diploma, Vietnam	9
Hong Kong Diploma of Secondary Education	25
SMA3, Indonesia – 100% scale (60% pass)	9.5 or 95%
Republic of Korea – College Scholastic Ability Test	380
Republic of Korea – High School Diploma	95%
STPM, Malaysia	11
UEC, Malaysia	1
UNSW Foundation Studies	9.5
University of Melbourne, Trinity College Foundation Studies	95%

1. There are limited places available in this course. The entry score is only indicative. This course has additional selection requirements.

SUBJECT PREREQUISITES

All applicants must satisfy the following prerequisites or their equivalents.

AUSTRALIAN VCE SUBJECTS

English	Maths	Sciences/Other
Units 3 and 4: a study score of at least 35 in English (EAL) or 30 in English other than EAL	N/A	Units 3 and 4: a study score of at least 30 in Chemistry

ENGLISH LANGUAGE REQUIREMENTS

International applicants can meet English language requirements by gaining the required result in one of the following tests:

Level C

- A minimum overall IELTS score of 7.0 with no individual band score less than 6.5.
- An overall score of at least 65 with no individual band score less than 58 in Pearson Test of English (Academic).
- An overall score of at least 94 with at least 24 in writing, 19 in reading and no less than 20 in listening and speaking in the internet based TOEFL.

LIFE AT MONASH



Monash University was high on my list based on its reputation and the structure of the degree. I was particularly drawn to the idea of spending the first year in a fully rural setting and being part of a smaller postgraduate cohort. As both a rural and international student, I felt this environment would help me integrate more easily and make friends. Since I was coming to Australia, I also wanted to experience more of its rural culture and great outdoors.

During my first year, I lived in on-campus housing in one of the halls of residence, which was ideal. Everyone was eager to get to know each other, make friends, and build a sense of community.

In my third year, while on general surgery, I had the opportunity to scrub in for several surgeries, practice suturing in the operating theatre, and spend significant time with consultants, which was an incredible experience.

In fourth year, I had an 18-week GP placement where I managed many of my own patients. It was rewarding to follow up with them multiple times and take on a larger role in their care – something that wouldn't be as common in a metropolitan setting.

I've thoroughly enjoyed the breadth of rotations I've experienced throughout my medical school journey. After finishing my recent oncology rotation, I'm inspired to pursue this field and to help expand oncology services to regional areas.

Whether you're in Australia permanently or just for four years before returning home, it's worth embracing the full experience – not just the medical school aspect, but also the unique aspects of Australian life. That mindset has truly enriched my time here and helped me settle in while making lasting friendships.

PAIGE ALLEN

Bachelor of Medical Science and
Doctor of Medicine (2024)

HEAR FROM OUR CANADIAN STUDENTS STUDYING MEDICINE AT MONASH



Learn more



ACCOMMODATION

Start with a short stroll to class. Swim a few laps before lunch. Study on the lawns in the afternoon. Gyms, sports fields and pools, grocery stores, banks and even restaurants – they're all on your doorstep if you live on campus.

ON-CAMPUS ACCOMMODATION

On-campus accommodation is supported by live-in staff and student leaders, making campus life a breeze. There's also 24-hour security on campus, and a thriving events and activities program to help you settle into your new community.

You can choose from traditional halls of residence, self-contained studio apartments or shared apartments.¹

Applications for on-campus accommodation usually open on 1 September. There are no application fees.

studyaustralia.gov.au/en/life-in-australia/living-and-education-costs

With students from more than 70 countries and a wide range of facilities on your doorstep, discover why on-campus accommodation is much more than just your room.

OFF-CAMPUS ACCOMMODATION

You can also live off-campus in private rental accommodation by yourself or with others. We can provide information about the options available.

LIVING EXPENSES

There are additional living expenses beyond accommodation costs. You'll also need to budget for groceries, utilities, public transport or a car, and there's also entertainment to consider as well.

The website below provides a calculator where you can calculate your estimated costs to give you a sense of what your expenses may be.



Scan the QR code for more information.

monash.edu/accommodation



¹ The fees for living on campus at Monash University vary depending on the type of accommodation. On-campus accommodation cost includes gas, water, electricity, internet, residential parking permit and laundry. Visit: monash.edu/accommodation/pricing-and-policy. Shared accommodation varies on a weekly basis depending on the accommodation location and the number of occupants.

WHY STUDY IN MELBOURNE?

Melbourne is a vibrant multicultural city brimming with life, offering an abundance of festivals and international sporting events – including the Australian Open and the Australian F1 Grand Prix.

There's something for everyone with an eclectic mix of music, arts and nature – from amusement parks, galleries zoos, parks and gardens to vibrant night life of theatres, bars, nightclubs, restaurants and concerts.



Great Ocean Road



Koalas at Melbourne Zoo



Australian Football League (AFL)



Royal Botanic Gardens Victoria



Kangaroos



Brighton Beach




HOW DO I APPLY?

DIRECT ENTRY

COURSE CODE M6011 CRICOS CODE 088889D

Direct Entry Medicine – Clayton Campus

Overseas-based and Foundation year applicants must contact Student Recruitment and Admissions:

 monash.edu/study/international/apply

International (onshore or offshore) Year 12 applicants who are studying an Australian high school curriculum must apply through  vtac.edu.au using **VTAC Course Code 2800311233** by **30 September 2026 (TBC)**.

All other international applications close on 30 June 2026.

FOR AGENTS IN YOUR AREA

 monash.edu/study/international/apply/through-an-agent

TO APPLY DIRECTLY

 monash.edu/study/how-to-apply/international-student-applications

WHEN TO APPLY

 monash.edu/medicine/som/direct-entry/international/applications-fees

Applicants who expect to obtain permanent residency by the commencement of the course are advised to contact the Faculty Admissions Unit for further information. Entry requirements for local applicants can be found on course finder.



GRADUATE ENTRY

INTERNATIONAL APPLICATIONS CLOSE ON 30 JUNE.

COURSE CODE M6018 CRICOS CODE 0101541

Graduate Entry Medicine – Churchill Campus



GRADUATE ENTRY APPLICATIONS

Applications will be direct to Monash University.

 monash.edu/admissions/apply/online



2026 GRADUATE ENTRY CALENDAR

 monash.edu/medicine/som/graduate-entry/international/applications-fees

MONASH UNIVERSITY recognises that its Australian campuses are located on the unceded lands of the people of the Kulin Nations, and pays its respects to their Elders, past and present.

Monash University reserves the right to alter information, procedures, fees and regulations contained in this document. Please check the Monash University website for updates (monash.edu). All information reflects prescriptions, policy and practice in force at time of publication. CRICOS Code: 00008C. Published February 2026.

MONASH MEDICINE, NURSING AND HEALTH SCIENCES

FACEBOOK

@MonashMNHS

INSTAGRAM

@monash_mnhs

X

@Monash_FMNSH

YOUTUBE

@MonashUniFMNSH

LINKEDIN

@monash-medicine-nursing-and-health-sciences

WECHAT ID

MonashUniAus

MONASH UNIVERSITY

monash.edu

FIND A COURSE

monash.edu/study

FUTURE STUDENT ENQUIRIES

Australian citizens, permanent residents and New Zealand citizens

monash.edu/students/support/connect/contact-us?chatbot=open

WEIBO

weibo.com/monashuniversityaust/

Monash China

monashuniversity.cn



MUMUS is the student society that represents the 2000 med students enrolled at Monash Clayton (undergraduate) and Monash Churchill (graduate). You're automatically a member just by being a Monash Meddie.

Throughout your degree, MUMUS is your voice to the Faculty of Medicine, Nursing and Health Sciences and to AMSA (Australian Medical Students Association) as well as your source of social events, academic support and wellbeing endeavours.

For more information, follow MUMUS on Facebook!

RESOURCES FOR APPLICANTS

BECOMING A DOCTOR

 ama.com.au/careers/becoming-a-doctor



SPECIALISATIONS



WHAT IT TAKES TO BE A DOCTOR